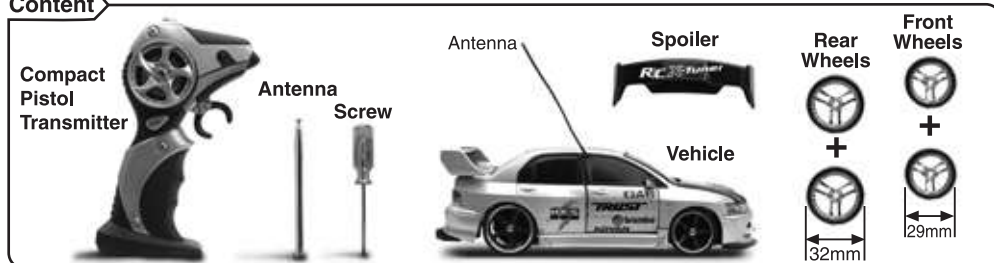


Instruction Manual

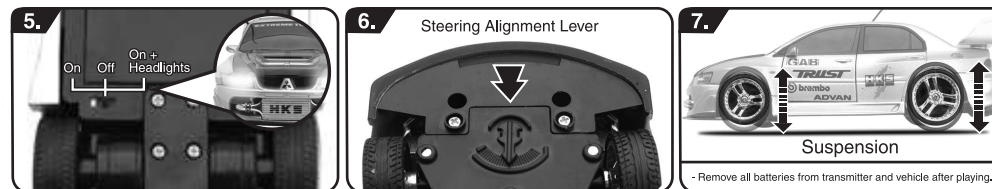
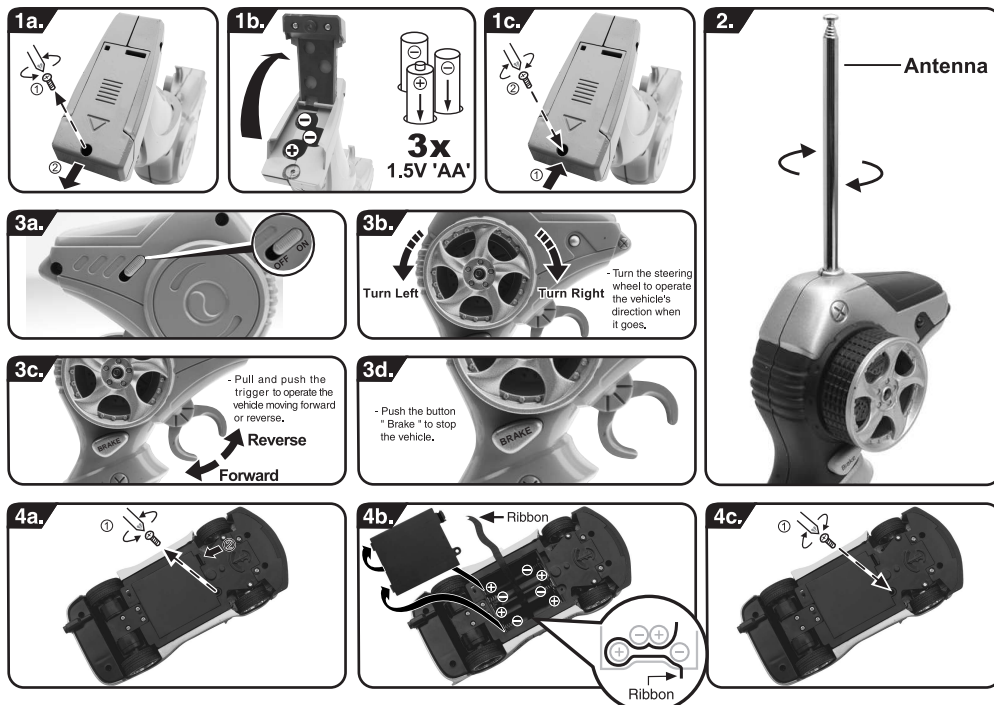
Caution

- Do not combine the use of new and old batteries.
- Do not combine the use of different types of batteries.
- Make sure the batteries are installed with the correct polarity in the battery compartment.
- Operate the vehicle on smooth surface. Do not operate through puddles of water, on sand, thick carpet or dusty environment that will damage the vehicle and electronic parts.
- Do not operate the vehicle with the same frequency of other player in the same area that will interfere the frequency and make the vehicle out of control.
- Do not store the transmitter and vehicle in a location of high temperature or high humidity. Do not store the product under direct sunlight.
- Do not attempt to disassemble or solder the transmitter and vehicle.
- Non-rechargeable batteries are not to be recharged.
- Rechargeable batteries are only to be charged under adult supervision.
- Rechargeable batteries are to be removed from the toy before being charged.

Content

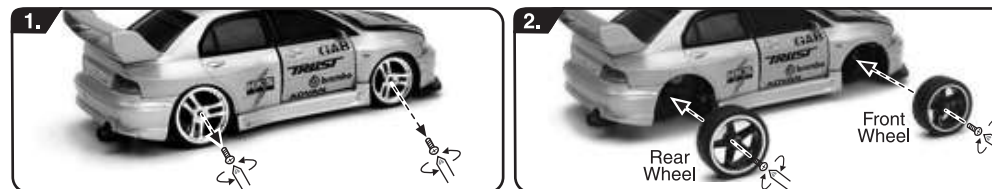


Operation

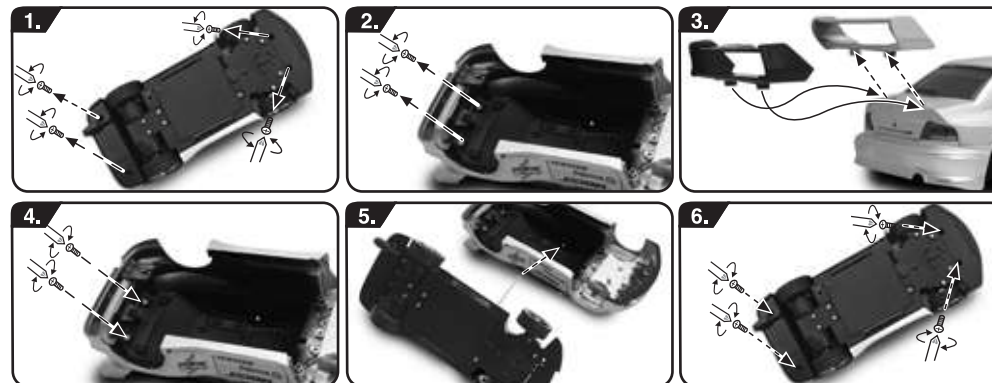


Wheels Exchange

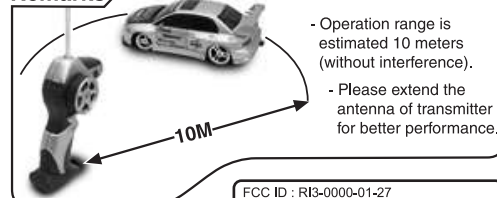
- Turn the power switch of vehicle to OFF position.



Spoiler Exchange



Remarks



- Operation range is estimated 10 meters (without interference).
- Please extend the antenna of transmitter for better performance.

FCC ID : R3-0000-01-27
MADE IN CHINA
This device complies with part 15 of the FCC Rules. Operation is subject to the following two conditions:
(1) this device may not cause harmful interference, and
(2) this device must accept any interference received, including interference that may cause undesired operation.

1880-99



Tested To Comply
With FCC Standards
FOR HOME OR OFFICE USE

FCC ID : R3-0000-01-49
MADE IN CHINA
This device complies with part 15 of the FCC Rules. Operation is subject to the following two conditions:
(1) this device may not cause harmful interference, and
(2) this device must accept any interference received, including interference that may cause undesired operation.

FCC Statement

NOTE : This equipment has been tested and found to comply with the limits for a Class B digital device, pursuant to Part 15 of the FCC Rules. These limits are designed to provide reasonable protection against harmful interference in a residential installation. This equipment generates, uses and can radiate radio frequency energy and, if not installed and used in accordance with the instructions, may cause harmful interference to radio communications. However, there is no guarantee that interference will not occur in a particular installation. If this equipment does cause harmful interference to radio or television reception, which can be determined by turning the equipment off and on, the user is encouraged to try to correct the interference by one or more of the following measures :

- Reorient or relocate the receiving antenna.
- Increase the separation between the equipment and receiver.
- Connect the equipment into an outlet on a circuit different from that to which the receiver is connected.
- Consult the dealer or an experienced radio/TV technician for help.

Warning : Changes or modifications to this unit not expressly approved by the party responsible for compliance could void the user's authority to operate equipment.

CE0197

**1880-99 (RX)
0000-01 (TX)**

- Hereby, Kentoys Ltd., declares that this 1:24 R/C Drift Machines is in compliance with the essential requirements and other relevant provisions of Directive 1999/5/EC.
- Three frequencies (27MHz, 40MHz or 49MHz) are available for this product.
- Please refer the frequency stated on the product or box for actual frequency.

Warning

- The supply terminals are not to be short-circuited.
- Avoid water damage to transmitter and vehicle. If they get wet, stop operating immediately and wait until they completely dry.
- Do not dispose batteries in fire that may cause explosion.
- If liquid leaking from the batteries stick to your skin or clothes, wash off immediately. If liquid get into your eyes, wash your eyes with distilled water and consult a physician immediately.
- This toys contains functional sharp points which may cause skin puncture hazard.

Countries Intended For Use

- Austria
- Belgium
- Denmark
- Finland
- France
- Cyprus
- Slovenia
- Germany
- Ireland
- Italy
- Luxembourg
- Portugal
- Estonia
- Hungary
- Latvia
- Lithuania
- Malta
- Poland
- Slovakia
- Spain
- Sweden
- The Netherlands
- United Kingdom
- Greece
- The Czech Republic