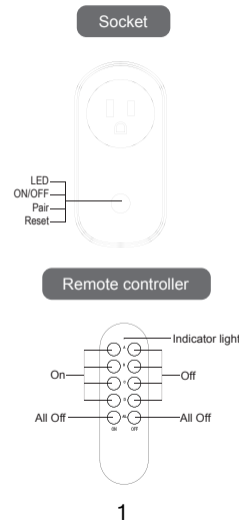
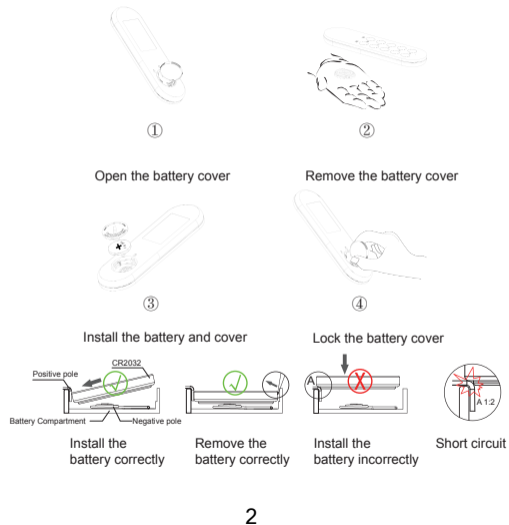


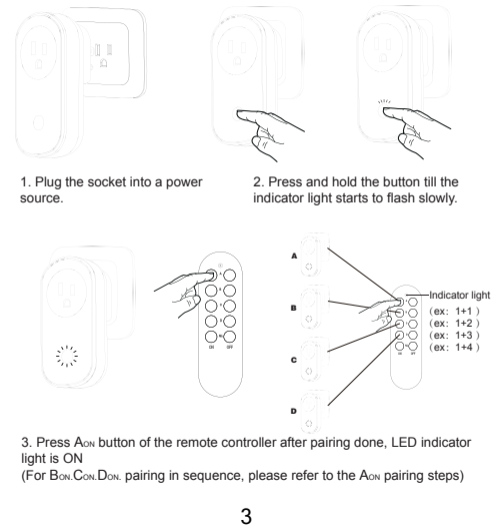
PRODUCT STRUCTURE



BATTERY INSTALLATION



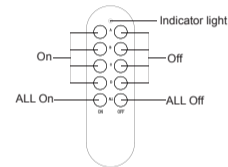
PAIRING SETTING



INSTRUCTIONS

1. Remote control operation method

Example: Press the A_{ON} button to turn on the device, and press the A_{OFF} button to turn off the device.
Example: Press the ALL_{ON} button to turn on all devices. Press the ALL_{OFF} button to turn off all devices.



2. If the remote controller is not available, the socket could be ON/OFF by pressing the button in the socket.



CLEAR RECEIVER MEMORY



Press and hold the button around 20 seconds and release it after the indicator light turns off.

PRODUCT SPECIFICATIONS



Model: 51196USA

Working voltage: 120V~ 60Hz 15A

Max power rating: 1800W

Operating range: Max 130 ft(outdoor open area)

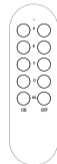
Frequency: 433.92MHz

LED flash: Red

Working temperature: 0°C~35°C

Use scene: Indoor

Standby power consumption: < 0. 5W



Model: 50183USA

Frequency: 433.92MHz

Working temperature: 0°C

~35°C Working voltage: 1x3V

CR2032 Standby current: < 5µA

Transmit power: < 2dBm

PRECAUTIONS

1. Use Information

The following equipment must not be connected to the remote control plug:

- Equipment exceeding the technical value of the remote control plug (-> technical data).
- Equipment with motor capacitors (such as refrigerators, etc.).
- Opening the device unattended can cause fire or other damage (such as irons, etc.).
- Cathode-ray tube television.
- Do not use remote control plug outdoors, near dripping water, and in damp rooms (bathrooms, etc.).
- In an emergency, you must have quick access to the remote control plugs so that they can be removed from the grounded contact plugs in the event of a hazard.

2. Safety Information

- Do not plug multiple devices into each other.
- There is no voltage when the plug is disconnected.
- Only suitable for dry rooms.
- The remote control plug can only be connected to a properly installed grounded contact socket (120V~60Hz).
- The remote control plug must not be plugged into an extension cord and must not be overloaded (maximum 1800W).
- Do not open the device. Improper assembly may cause electric shock, short circuit or fire.
- The range of the remote control plug is severely affected by structural conditions (such as reinforced concrete) or sources of electrical / electromagnetic interference (fluorescent lights, cordless phones or earphones, TV/monitors, cables, etc.). If necessary, remove disturbance sources or keep a proper distance.
- Keep the equipment installation at a distance of more than 80CM from the ground.
- Avoid humidity, extreme temperature, vibration and shock.
- Clean with a soft, slightly damp cloth. Do not use detergents or solvents. Do not immerse in water.
- Do not plug pins or other metal objects into power outlets.

PRECAUTIONS

- Do not expose the battery to extreme temperatures such as direct sunlight or fire. Do not place the device on the heater. Leaking battery acid can cause damage.
- Always install batteries with the correct polarity (+ and -), as shown in the battery compartment.
- Notice! If the battery is incorrectly installed, there is a danger of explosion.
- When replacing the battery, only use the same type of battery.
- If the battery leaks, remove it from the battery compartment with a cloth, dispose the battery properly. If battery acid leaks, avoid contact with skin, eyes, and mucous membranes. If you come into contact with acid, immediately rinse the affected skin thoroughly with water and consult a doctor.
- Store the battery in a well-ventilated and dry place.
- If you do not use the device for a long time, remove the battery.
- Risk of explosion! Do not use other reagents to charge or reactivate the battery, and do not disassemble, throw into fire or short-circuit the battery.
- Remove the used battery from the device and dispose it immediately.

Warning :

1. This product contains button batteries. If you swallow a button battery, it will cause severe internal hurt within 2 hours and may result in death.
2. Keep new and used batteries away from children.
3. If the battery compartment cannot be closed tightly, please stop using the product and keep it away from children.
4. If you think the battery may be swallowed or entered any part of the body, please seek medical advice immediately.

Caution:

This device complies with Part 15 of the FCC Rules / Industry Canada licence-exempt RSS standard(s). Operation is subject to the following two conditions: (1) this device may not cause harmful interference, and (2) this device must accept any interference received, including interference that may cause undesired operation.

Le présent appareil est conforme aux CNR d'Industrie Canada applicables aux appareils radio exempts de licence. L'exploitation est autorisée aux deux conditions suivantes : (1) l'appareil ne doit pas produire de brouillage, et (2) l'utilisateur de l'appareil doit accepter tout brouillage radioélectrique subi, même si le brouillage est susceptible d'en compromettre le fonctionnement.

Changes or modifications not expressly approved by the party responsible for compliance could void the user's authority to operate the equipment.

This equipment has been tested and found to comply with the limits for a Class B digital device, pursuant to part 15 of the FCC Rules. These limits are designed to provide reasonable protection against harmful interference in a residential installation. This equipment generates uses and can radiate radio frequency energy and, if not installed and used in accordance with the instructions, may cause harmful interference to radio communications. However, there is no guarantee that interference will not occur in a particular installation. If this equipment does cause harmful interference to radio or television reception, which can be determined by turning the equipment off and on, the user is encouraged to try to correct the interference by one or more of the following measures:
—Reorient or relocate the receiving antenna.
—Increase the separation between the equipment and receiver.
—Connect the equipment into an outlet on a circuit different from that to which the receiver is connected.
—Consult the dealer or an experienced radio/TV technician for help.

Wireless Remote Control Socket

User Guide 型号: 51196USA+50183USA

