

Kangtai® Manual for Outdoor Radio-Controlled Socket 51267USA+50123USA

Model No.: 50123USA,20020USA,SN20012USA,SN20016USA

Brief Function: Transmitter

A Product Installation/Uninstallation

A1. Battery Loading/Unloading

Remove the battery cover and insert the battery into the battery cabinet with the negative polarity downward, and then screw up the battery cover. Briefly press any one button of the remote control, the LED indicator will be on, then it means that the battery has been loaded successfully.

B Function Detail

B Function Detail

B1. Pairing

Keep the button pressed for more than 3 seconds (but less than 6 seconds) and then release, when the LED indicator starts blinking, it means that the receiver has entered into pairing mode; go on to press the ON button of any row of the remote control, and then the LED indicator turns constantly on, it means that the pairing process has been successfully made.

B2.. Function of Remote Control

The remote totally has 5 rows of buttons, with first 4 rows to be ON/OFF buttons and the last row to be "All ON/OFF". When the receiver is being under pairing mode, press any one "ON" button of the first 4 rows of the remote to pair. After successfully pairing, this row is able to control ON/OFF of the receiver.

B3. Remove the Memory

Keep the "learn" button pressed for more than 3 seconds and then release, the receiver will enter into the pairing mode with the LED indicator flashing slowly; Press the OFF button of any row of the remote, the indicator will be flashing quickly and then turn off, it means that the pairing memory of the row has been removed successfully.

Keep the "learn" button pressed for more than 6 seconds, all the pairing memories with the receiver will be removed.

C Technical Data

Working Frequency: 433.92Mhz;
 Power Supply Battery: 3V CR2032;
 Battery Life Time: about 12 months;
 Working Range: $\geq 100\text{m}$ in open area;
 Range: 40m (open air);
 25m (wood);
 15m (Brick);
 0-7m (Metal)

Working Temperature: 0°C---35°C

Transport and Storage Temperature: 0°C---35°C

D Caution:

Caution:

This product contains a coin / button cell battery.

If the coin / button cell battery is swallowed,

it can cause severe internal burns in just 2 hours and can lead to death. Keep new and used batteries away from children.

If the battery compartment does not close securely, stop using the product and keep it away from children.

If you think batteries might have been swallowed or placed inside any part of the body, seek immediate medical attention.

Mise en garde:

Ce produit contient une pile bouton / bouton.

Si la pile bouton / bouton est avalée,

il peut provoquer de graves brûlures internes en seulement 2 heures et entraîner la mort. Gardez les piles neuves et usagées hors de portée des enfants.

Si le compartiment à piles ne se ferme pas correctement, cessez d'utiliser le produit et gardez-le hors de portée des enfants.

Si vous pensez que les piles ont été avalées ou placées

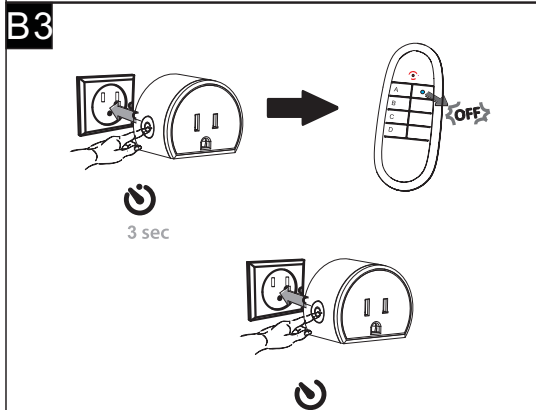
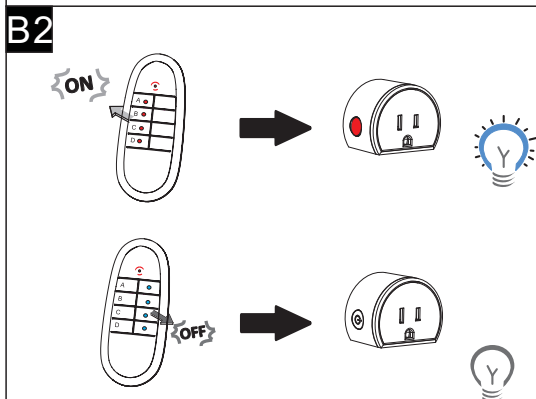
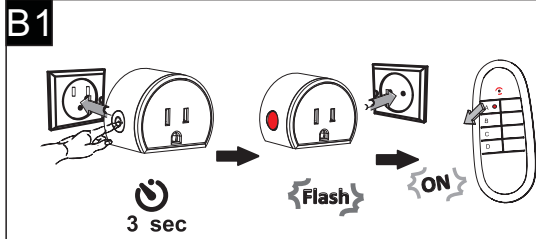
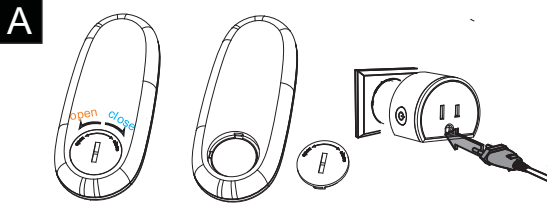
à l'intérieur de n'importe quelle partie du corps, consultez immédiatement un médecin.



Kangtai Electric CO.,LTD

No.5,Kangtai Rd,Huanghua Industrial District,

Yueqing,Zhejiang,P.R.China



Caution:

This device complies with Part 15 of the FCC Rules / Industry Canada licence-exempt RSS standard(s). Operation is subject to the following two conditions: (1) this device may not cause harmful interference, and (2) this device must accept any interference received, including interference that may cause undesired operation.

Le présent appareil est conforme aux CNR d'Industrie Canada applicables aux appareils radio exempts de licence. L'exploitation est autorisée aux deux conditions suivantes : (1) l'appareil ne doit pas produire de brouillage, et (2) l'utilisateur de l'appareil doit accepter tout brouillage radioélectrique subi, même si le brouillage est susceptible d'en compromettre le fonctionnement.

Changes or modifications not expressly approved by the party responsible for compliance could void the user's authority to operate the equipment.

This equipment has been tested and found to comply with the limits for a Class B digital device, pursuant to part 15 of the FCC Rules. These limits are designed to provide reasonable protection against harmful interference in a residential installation. This equipment generates uses and can radiate radio frequency energy and, if not installed and used in accordance with the instructions, may cause harmful interference to radio communications. However, there is no guarantee that interference will not occur in a particular installation. If this equipment does cause harmful interference to radio or television reception, which can be determined by turning the equipment off and on, the user is encouraged to try to correct the interference by one or more of the following measures:

- Reorient or relocate the receiving antenna.
- Increase the separation between the equipment and receiver.
- Connect the equipment into an outlet on a circuit different from that to which the receiver is connected.
- Consult the dealer or an experienced radio/TV technician for help.