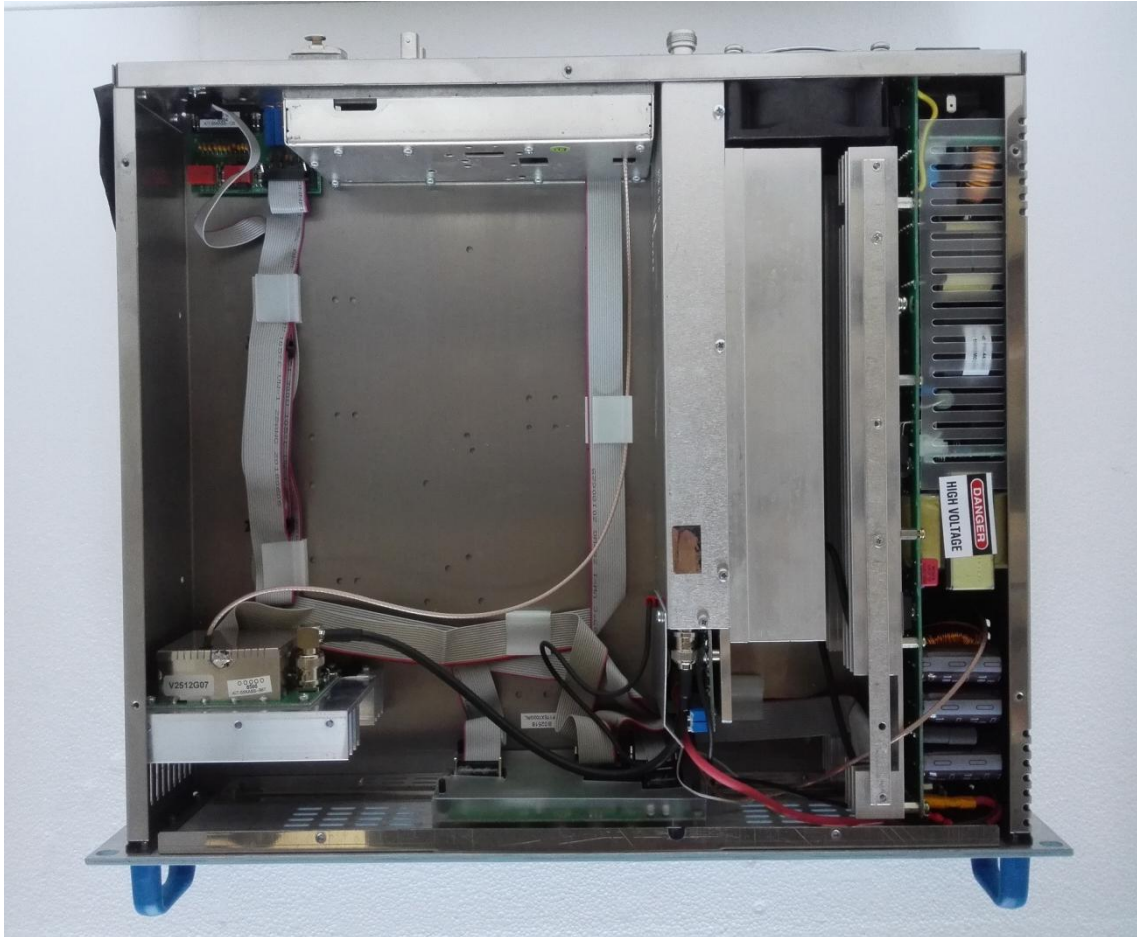
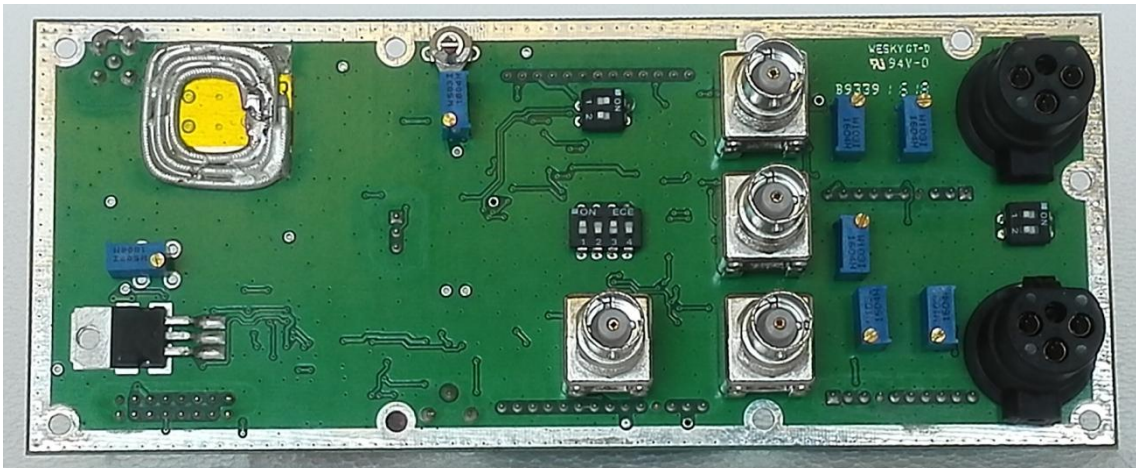
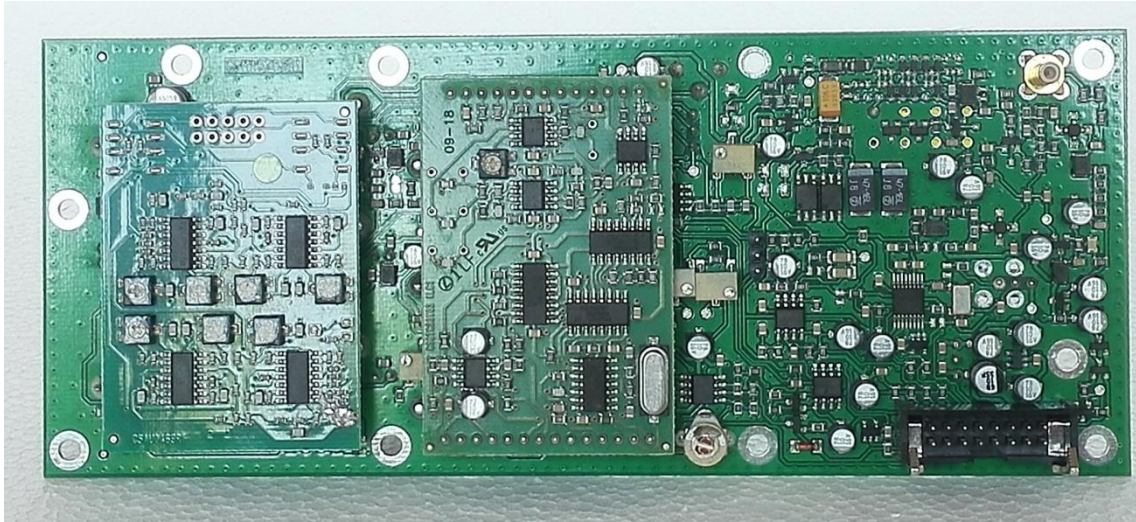


# TEX502LCD

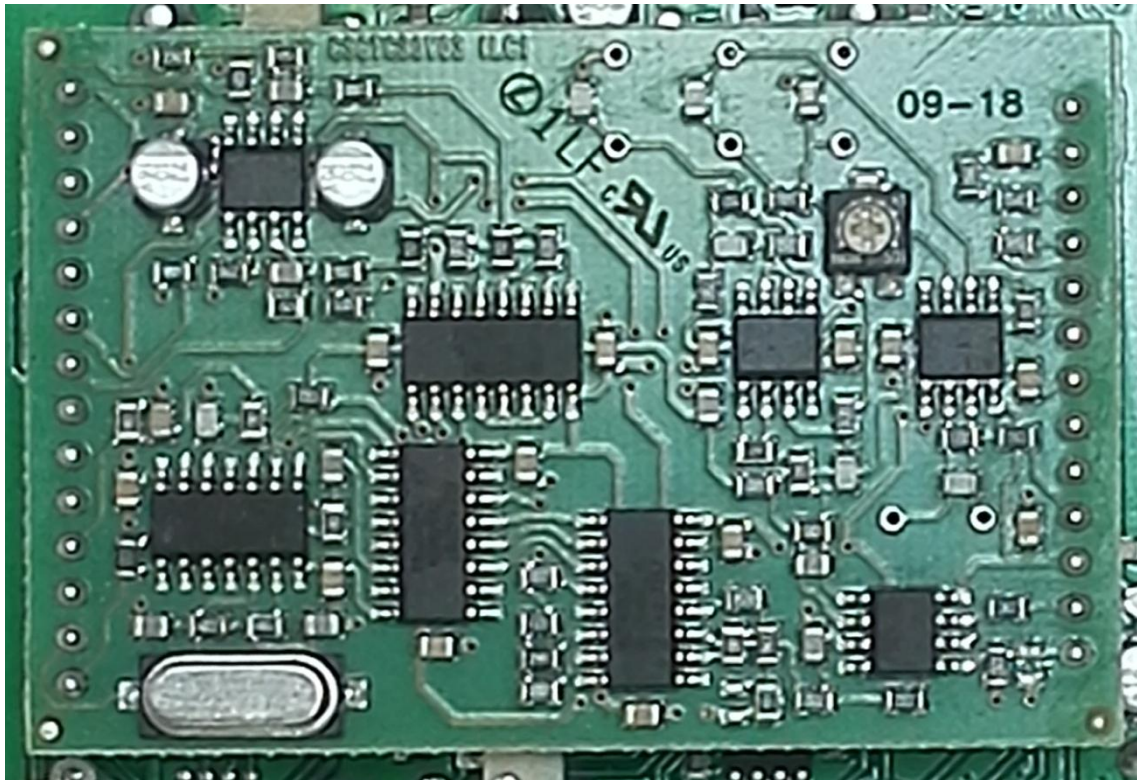
## 1. Inner View



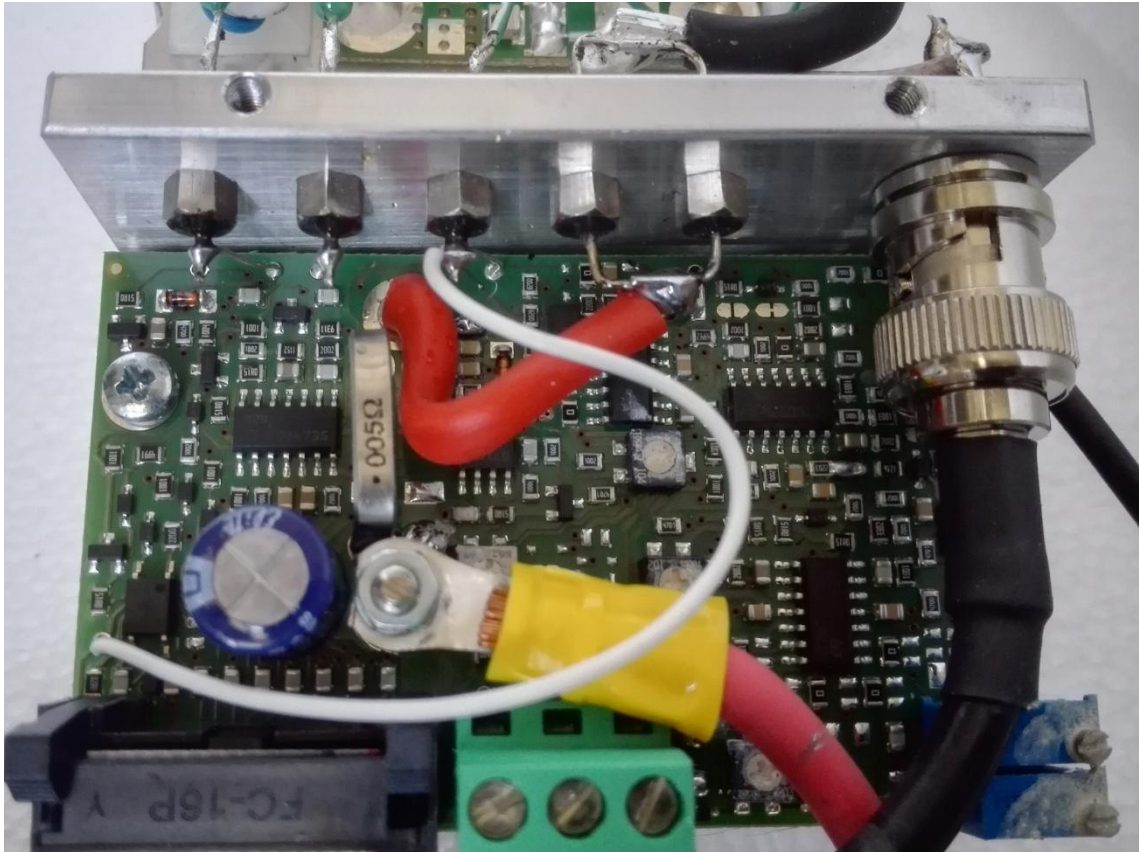
## 2. Main Board - SLMA0383R01V01



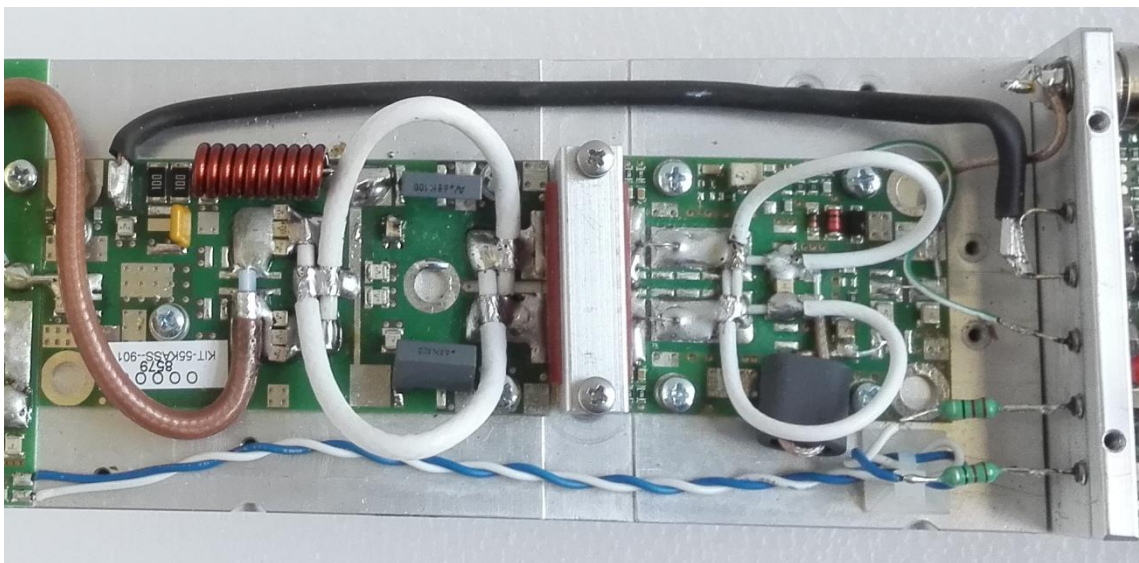
### 3. Stereo Coder Card - SLCTC30V03



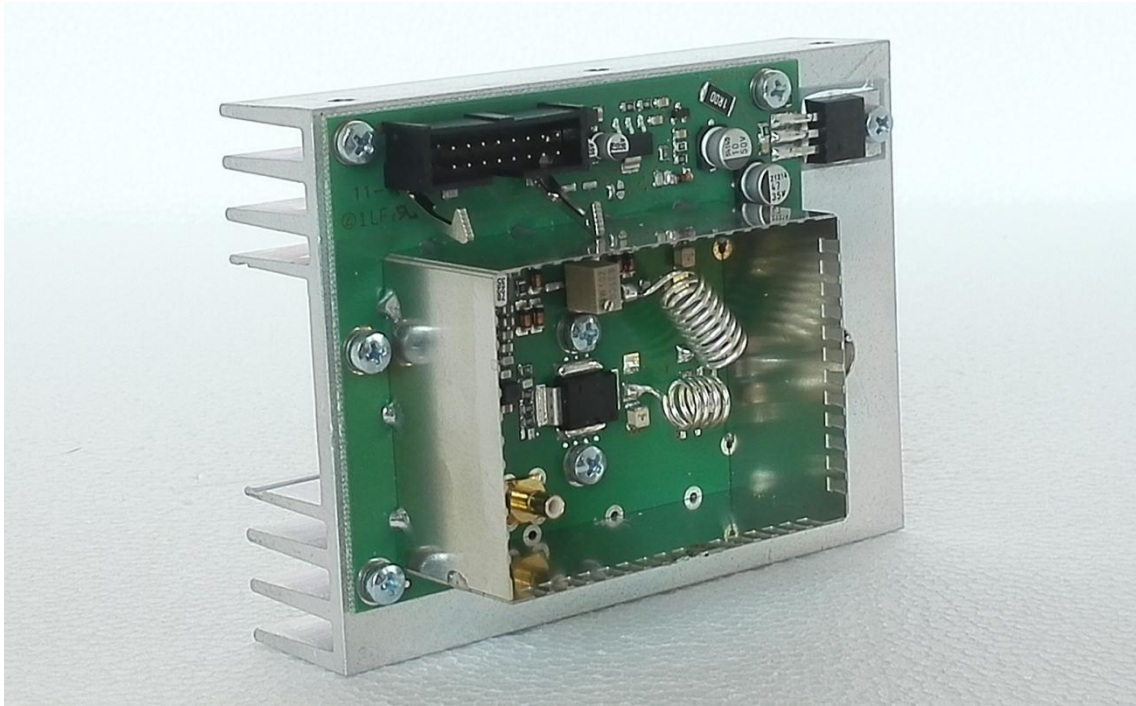
#### 4. Control Card - SLCNTMOS07.700



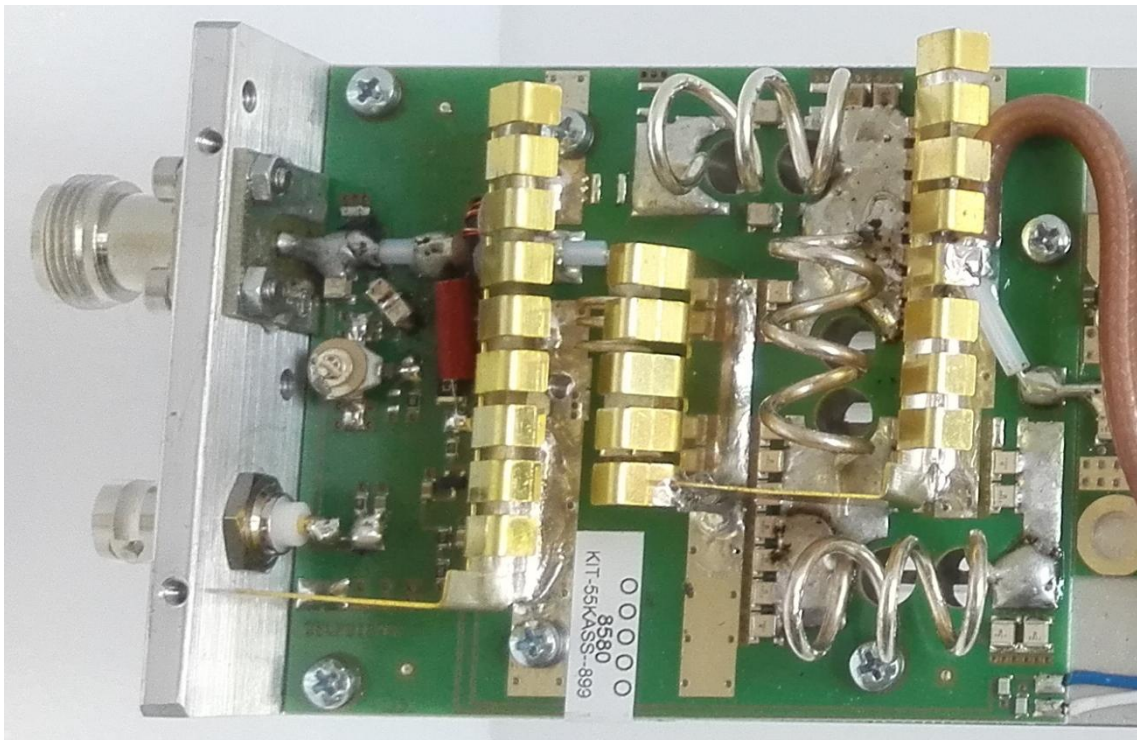
#### 5. Power Amplifier - SL237RF1001



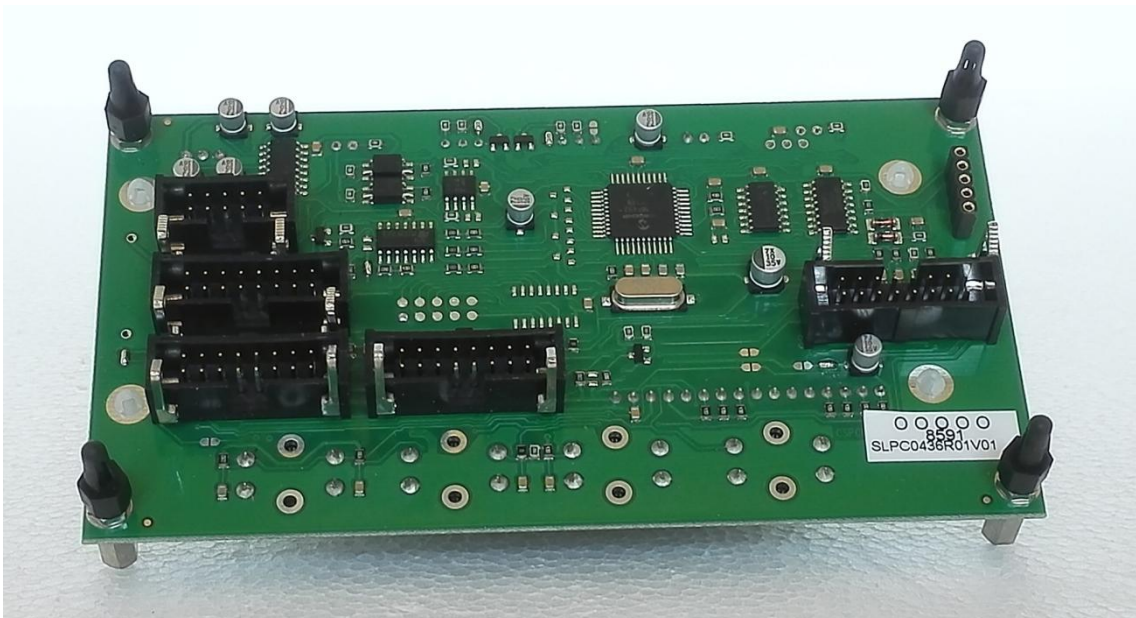
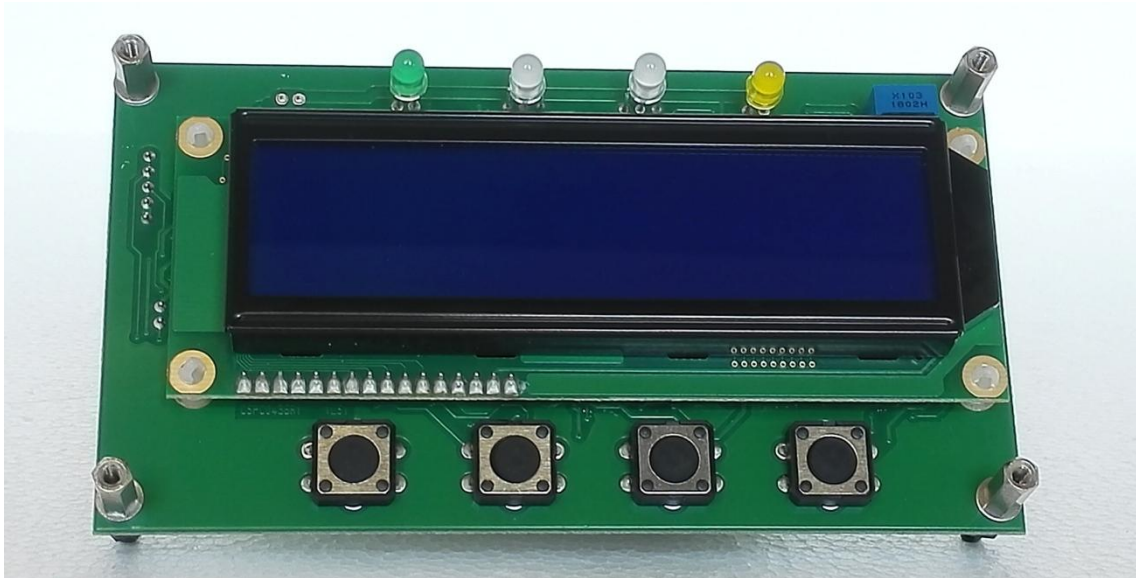
## 6. Driver Card - SLDR0271R03V02



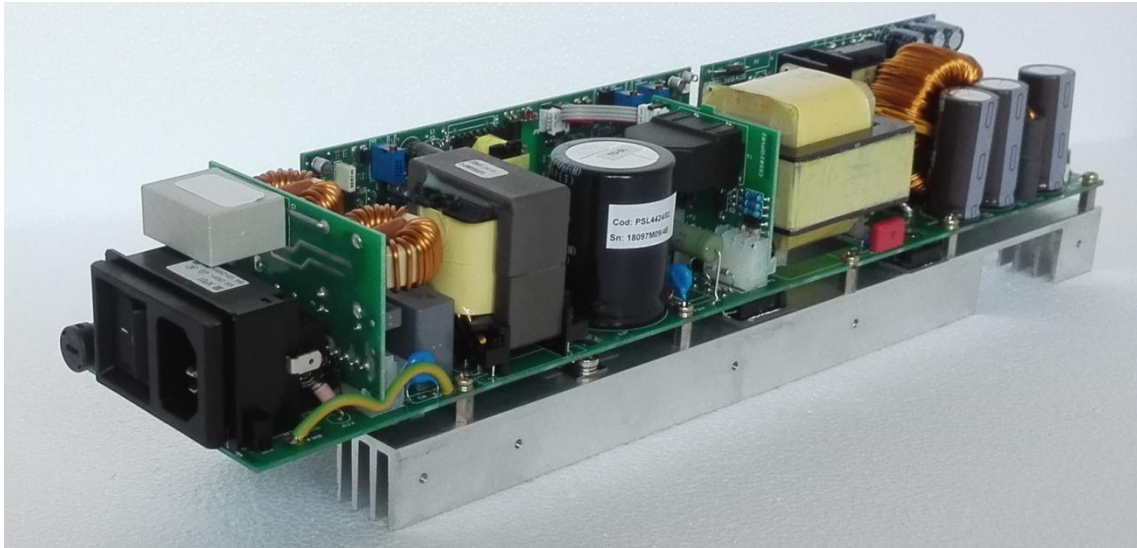
## 7. Low Pass Filter Card - SL175LP2001



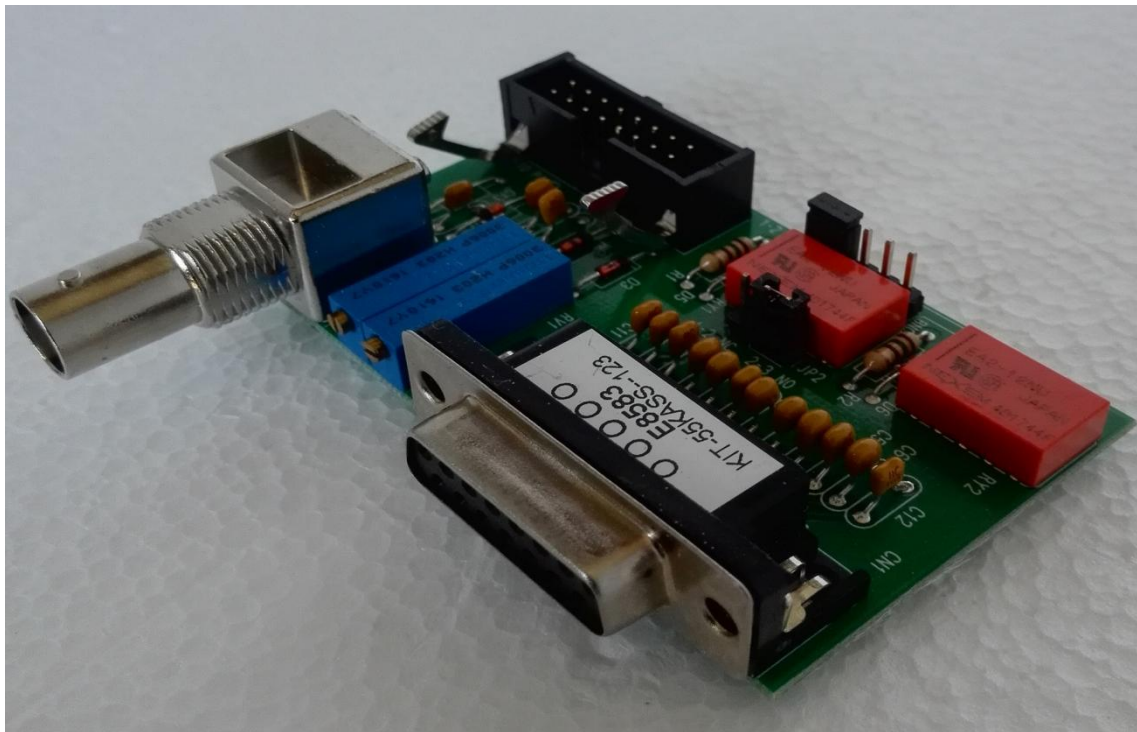
## 8. Panel Card - SLPC0436R01V01



## 9. Power Supply - KPSL4424



## 10. Telemetry Card - SLTLMTXLCD03



**R.V.R. Elettronica s.r.l.**  
Via del Fonditore, 2/2c - 40138 Bologna-Italy  
P.lva - Val.no. IT 02124450376  
Tel. +39 051 6010506 - Fax +39 051 6011104  
Certified - UNI EN ISO 9001  
Valentino Biavati  
CEO / President