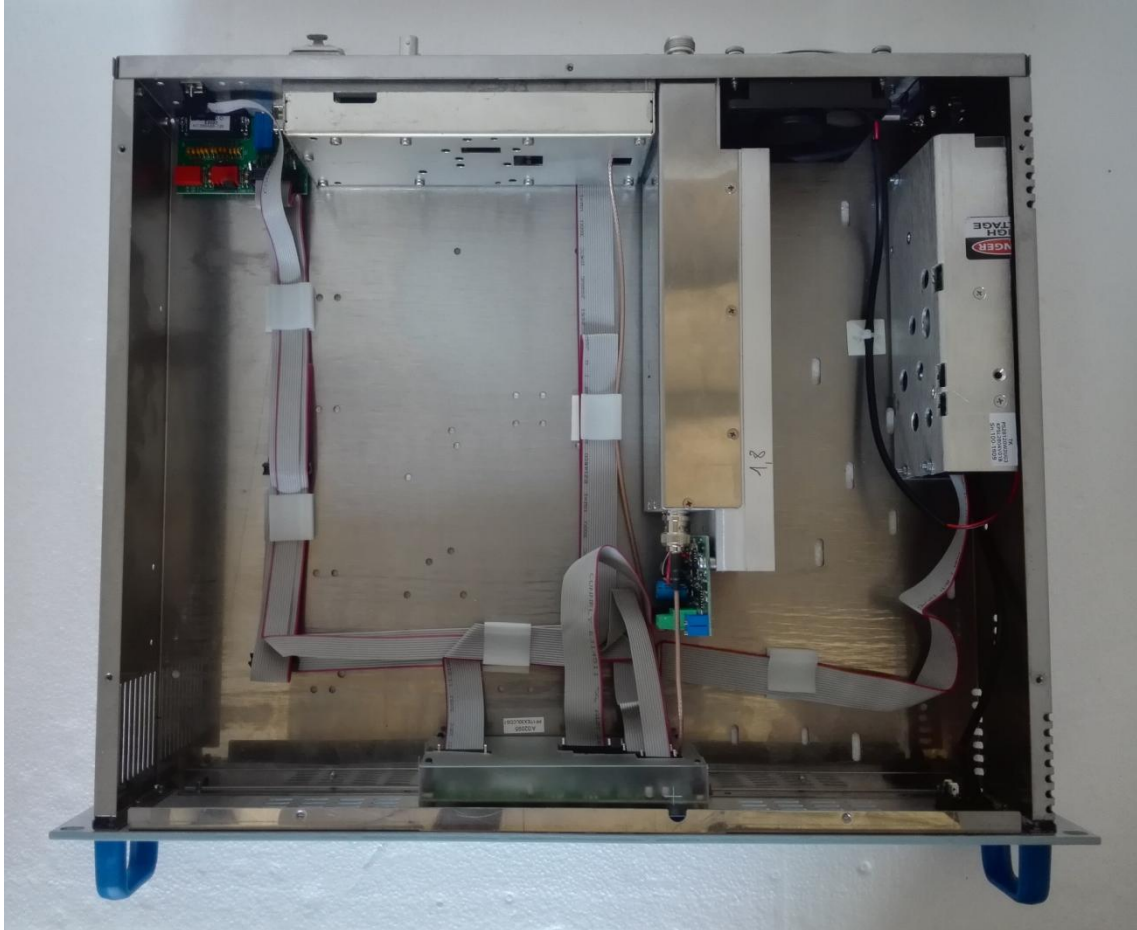
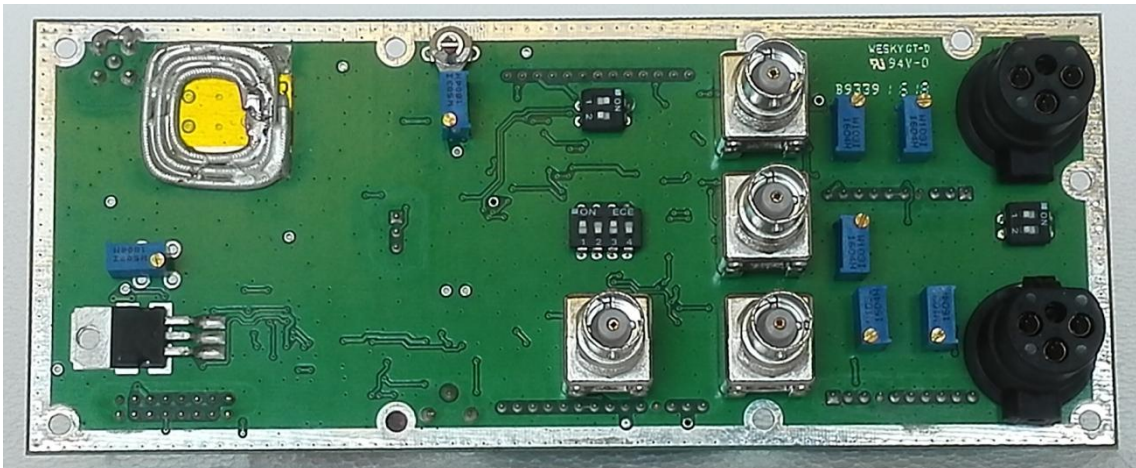
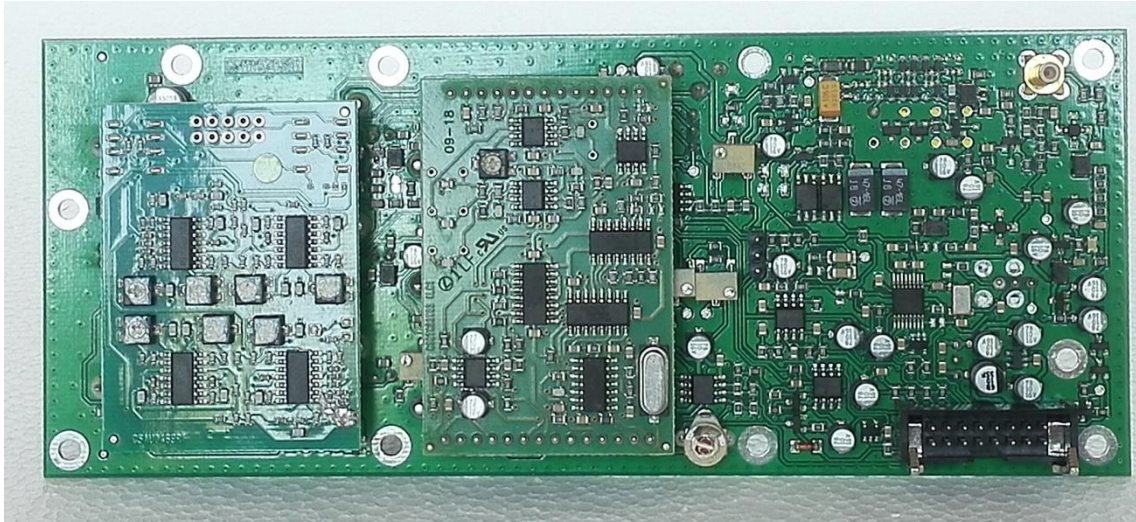


# TEX30LCD/S

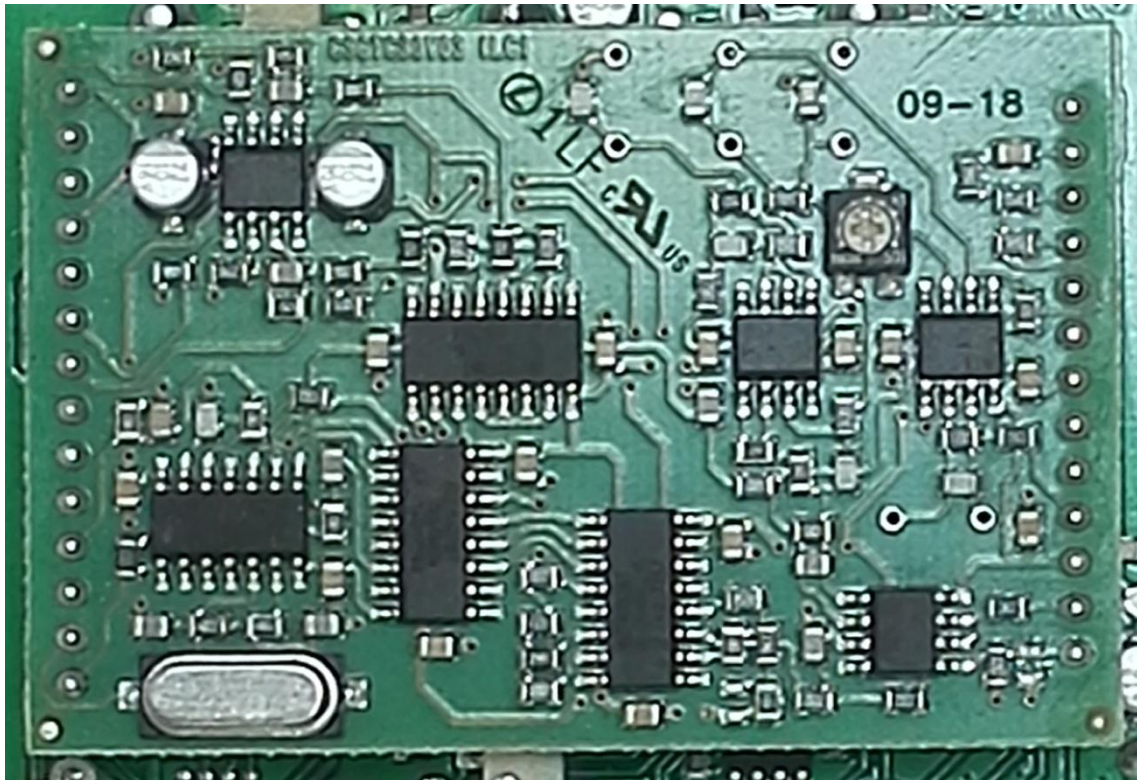
## 1. Inner View



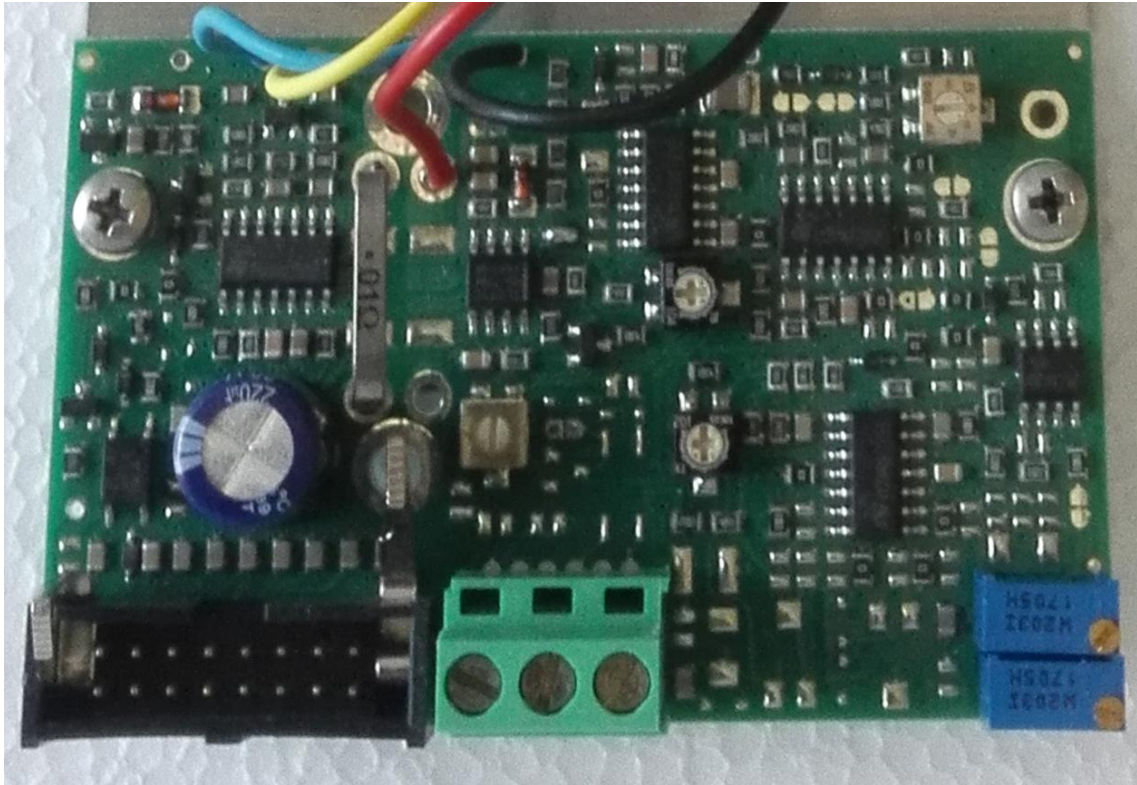
## 2. Main Board - SLMA0383R01V01



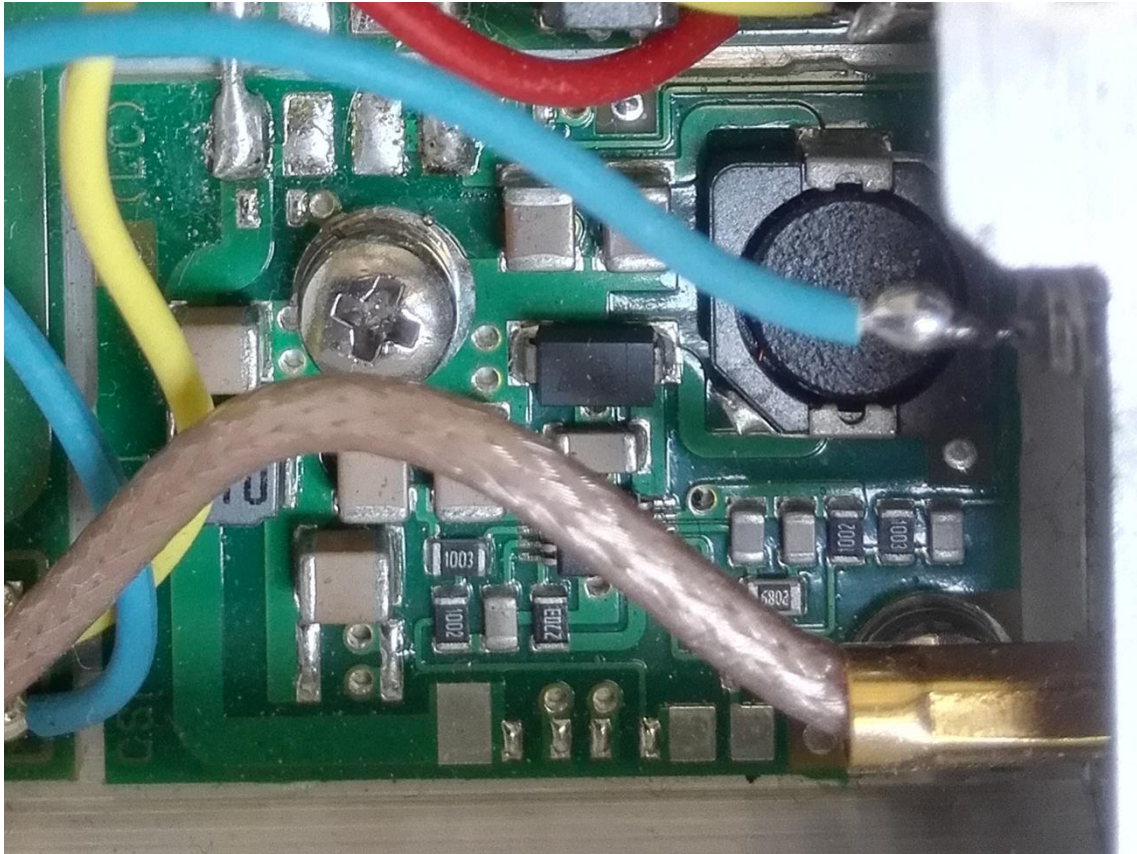
### 3. Stereo Coder Card - SLCTC30V03



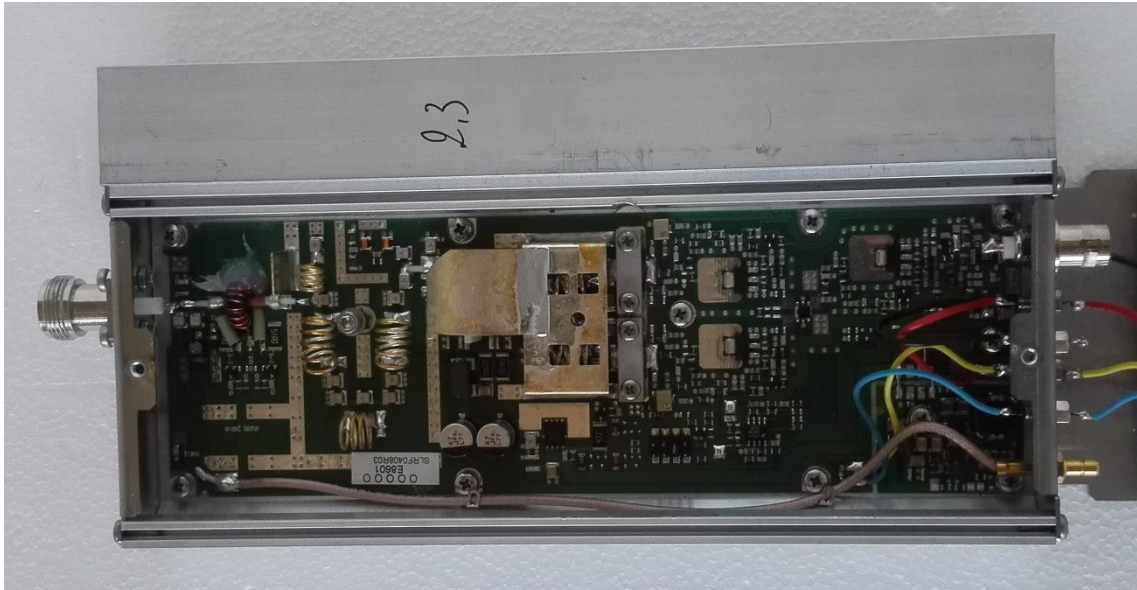
#### 4. Control Card - SLCNTMOS07.50



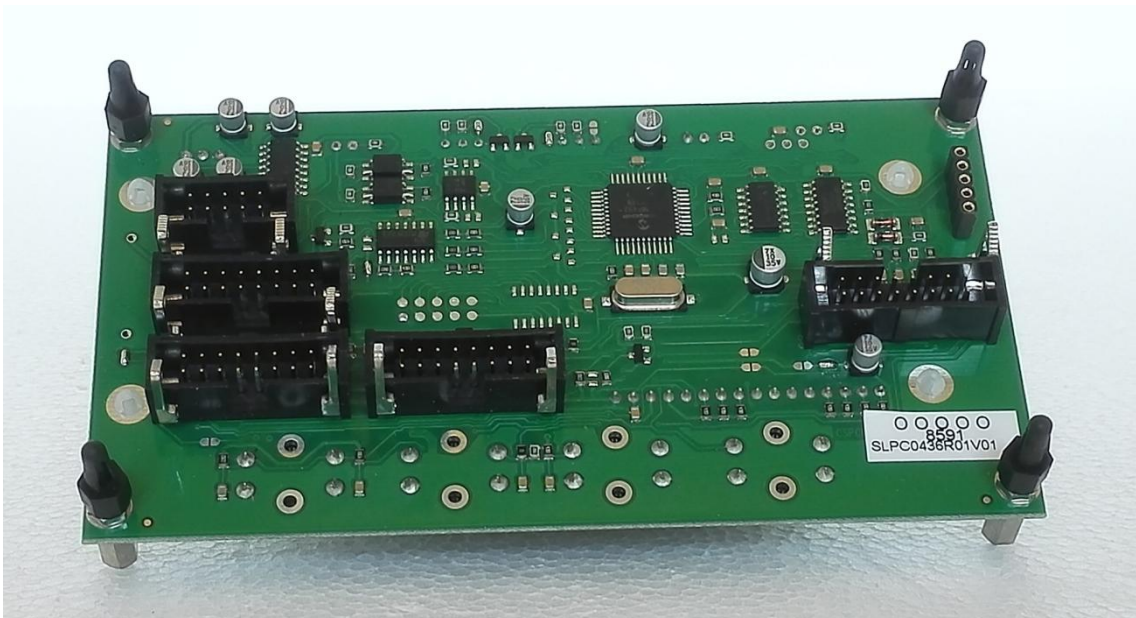
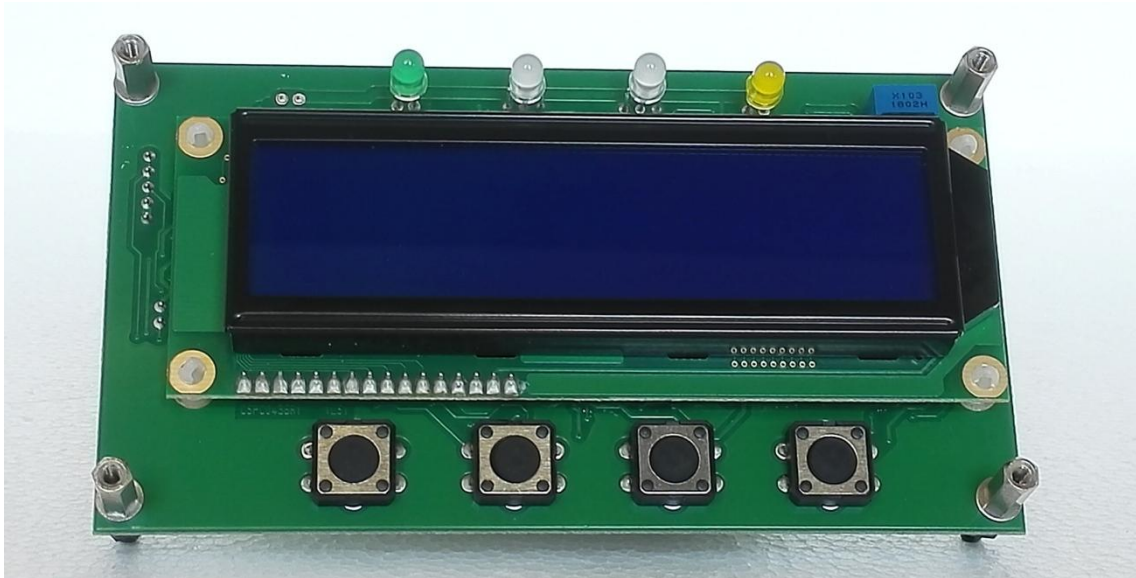
## 5. PA RF Power Supply - SLPS0468R01V01



## 6. Power Amplifier - SLRF0408R03V01



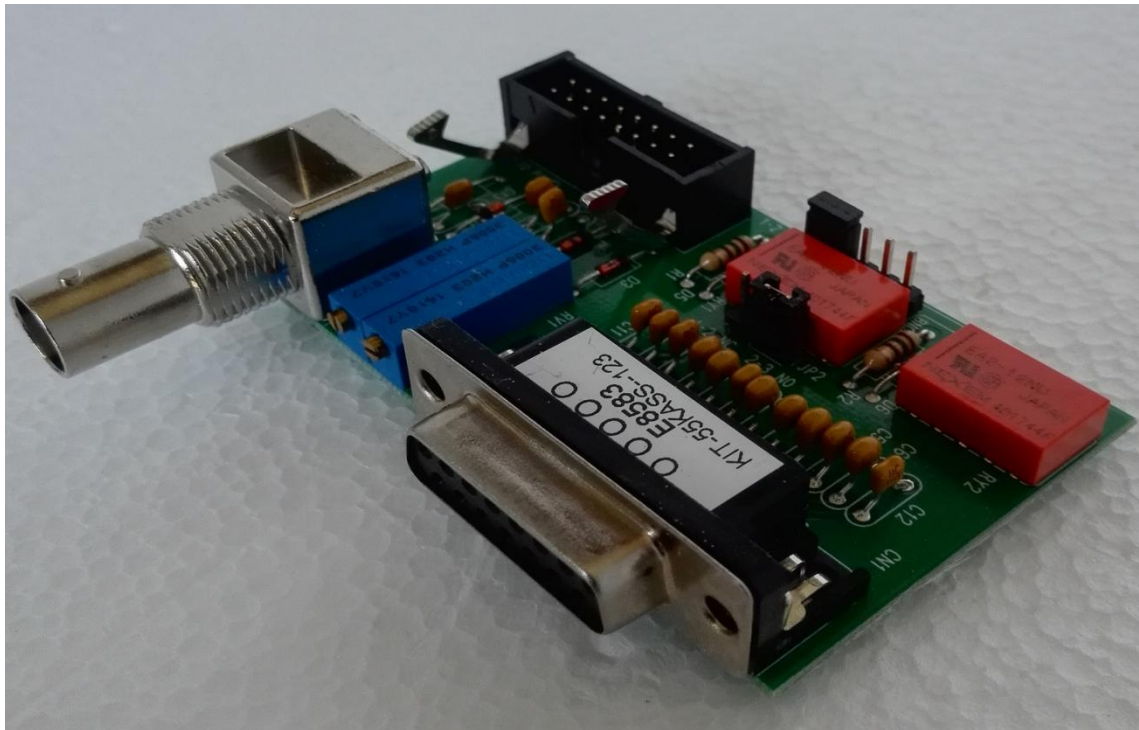
## 7. Panel Card - SLPC0436R01V01



## 8. Power Supply - KPSL2804V01B



## 9. Telemetry Card - SLTLMTXLCD03



R.V.R. Elettronica s.r.l.  
Via del Fonditore, 2/2c - 40138 Bologna-Italy  
P.Iva - Vat. no. IT 02124450376  
Tel. +39 051 6010506 - Fax +39 051 6011104  
Certified - UNI EN ISO 9001  
Valentino Biavati  
CEO / President