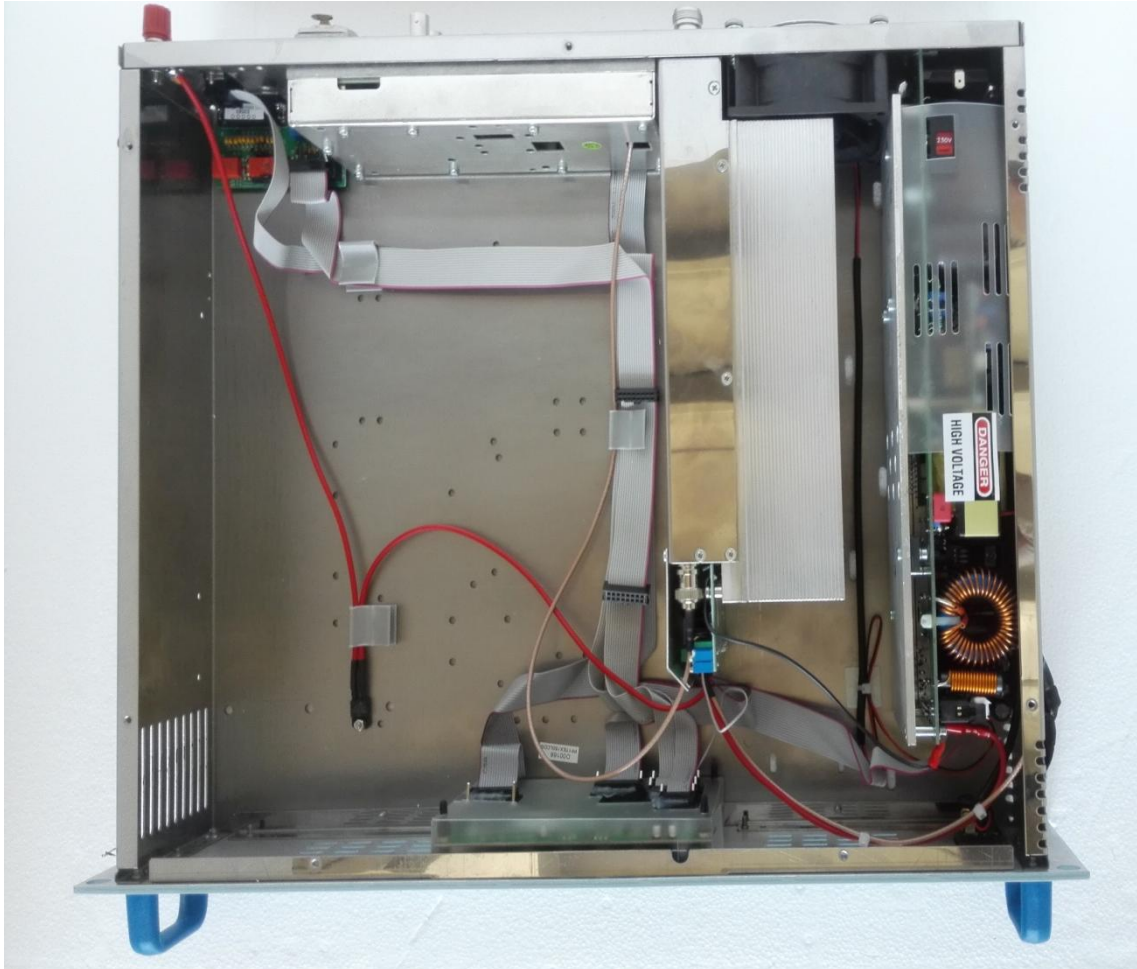
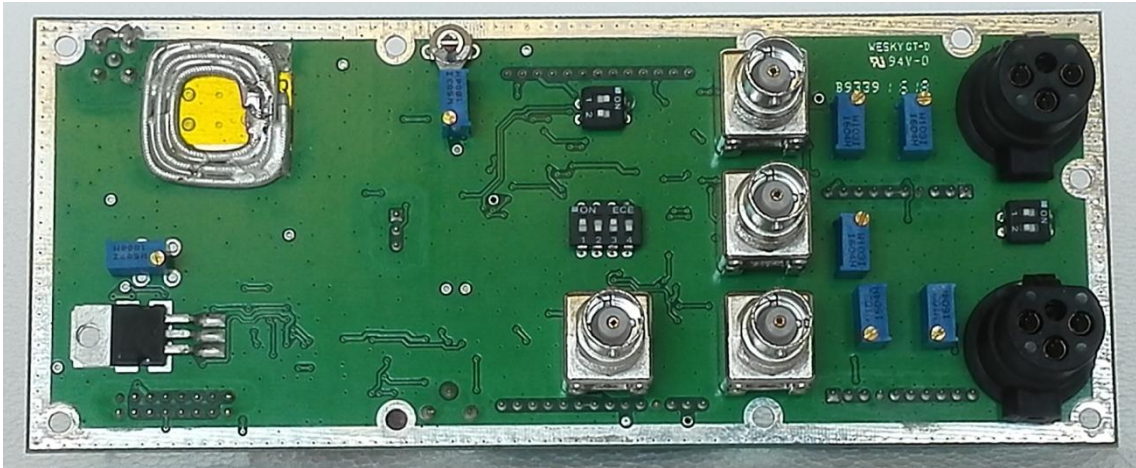
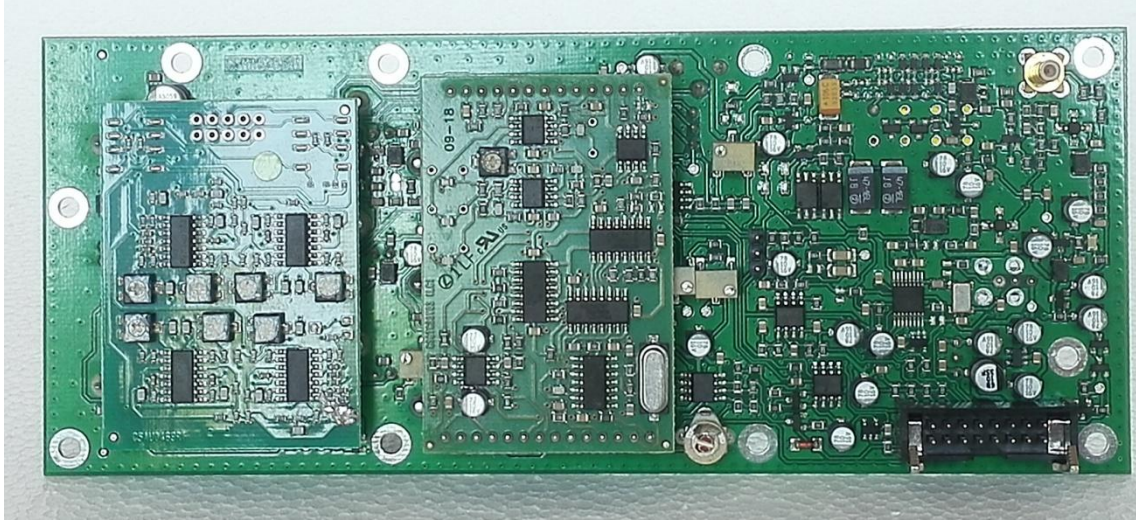


TEX100LCD/S

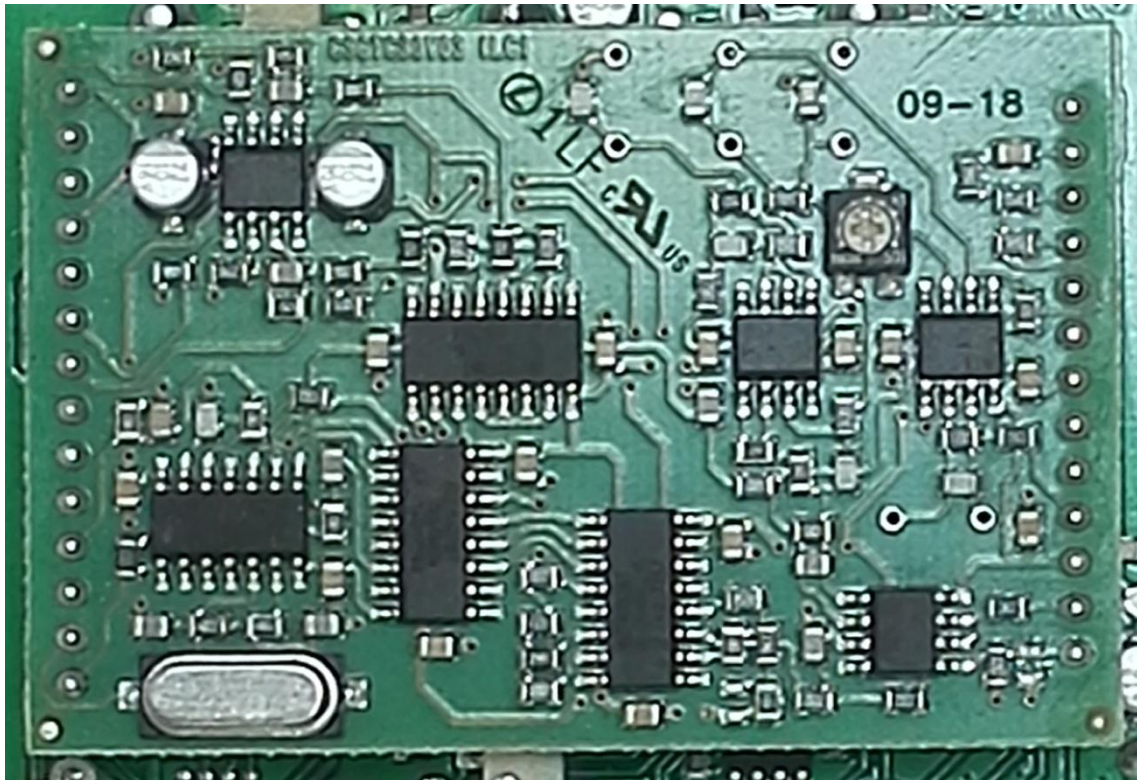
1. Inner View



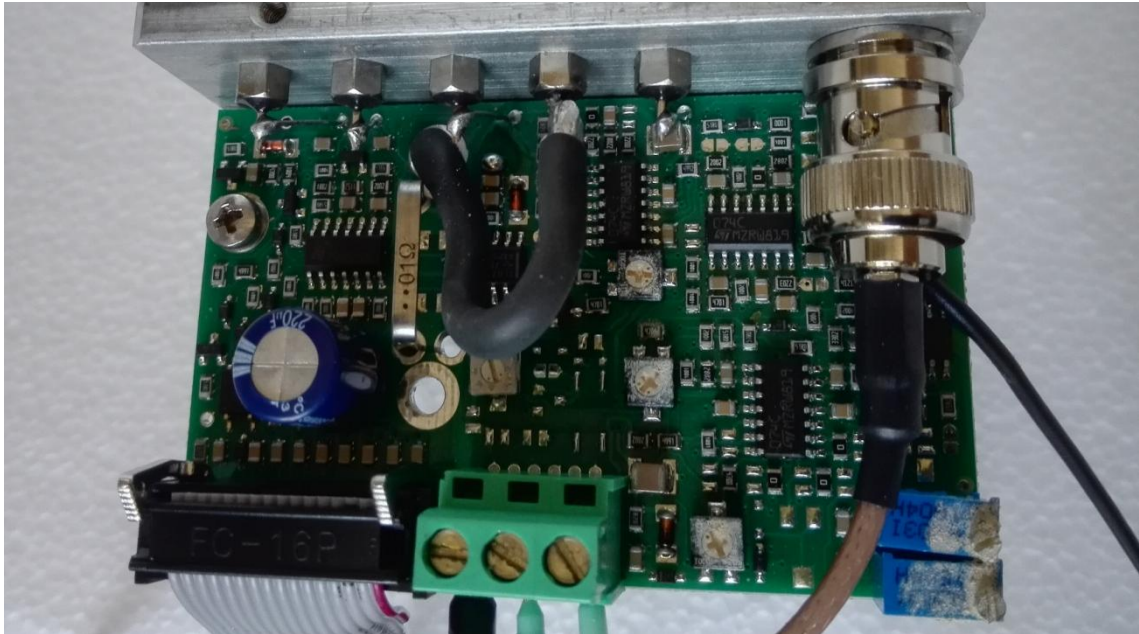
2. Main Board - SLMA0383R01V01



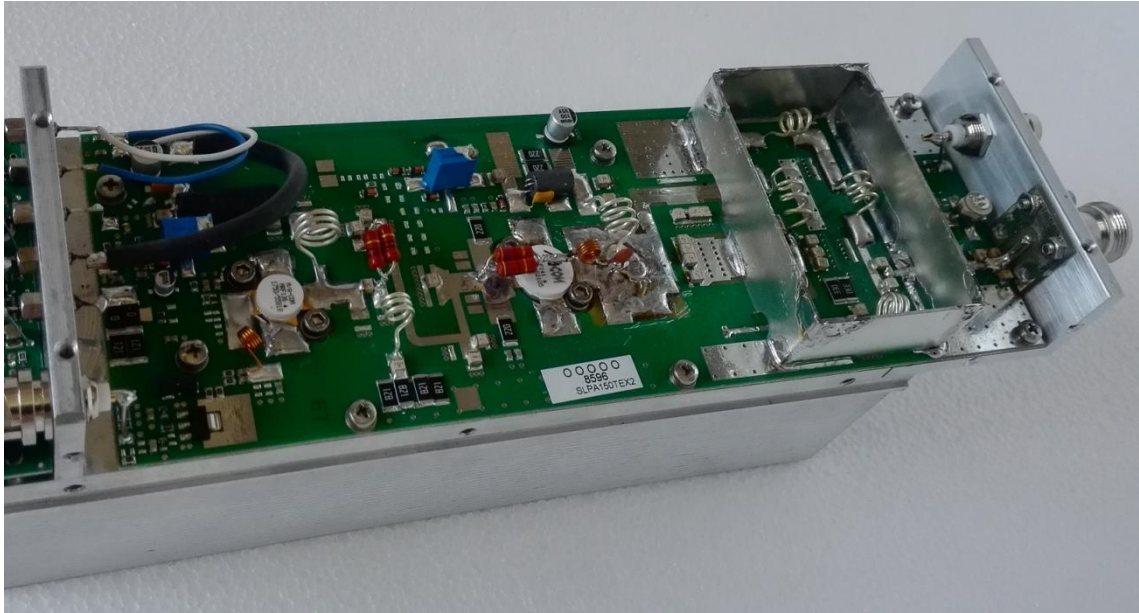
3. Stereo Coder Card - SLCTC30V03



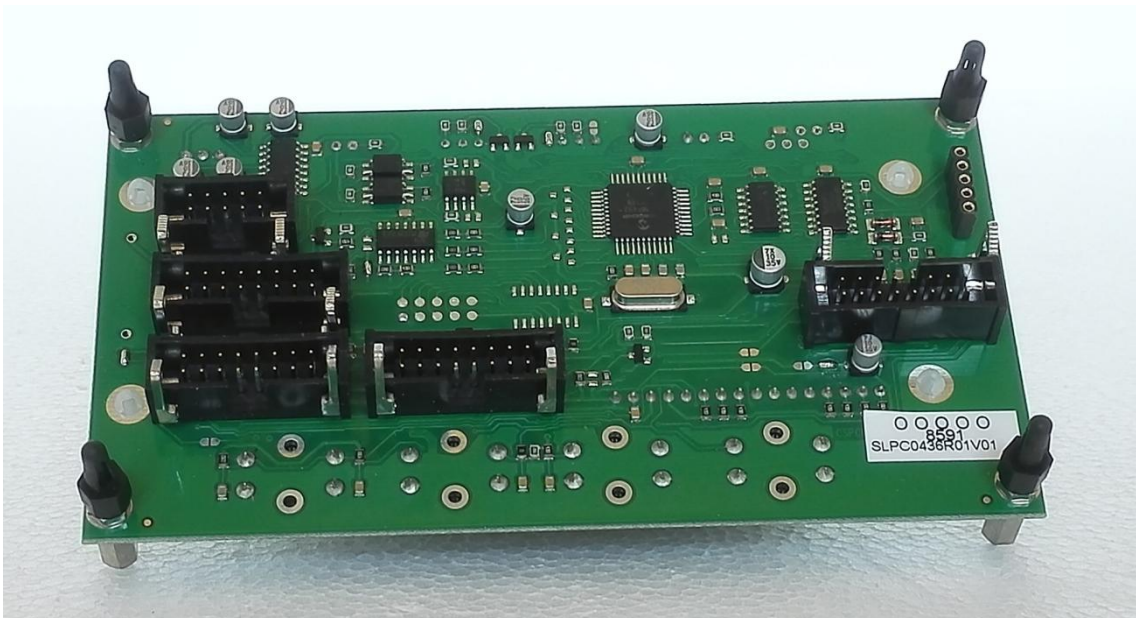
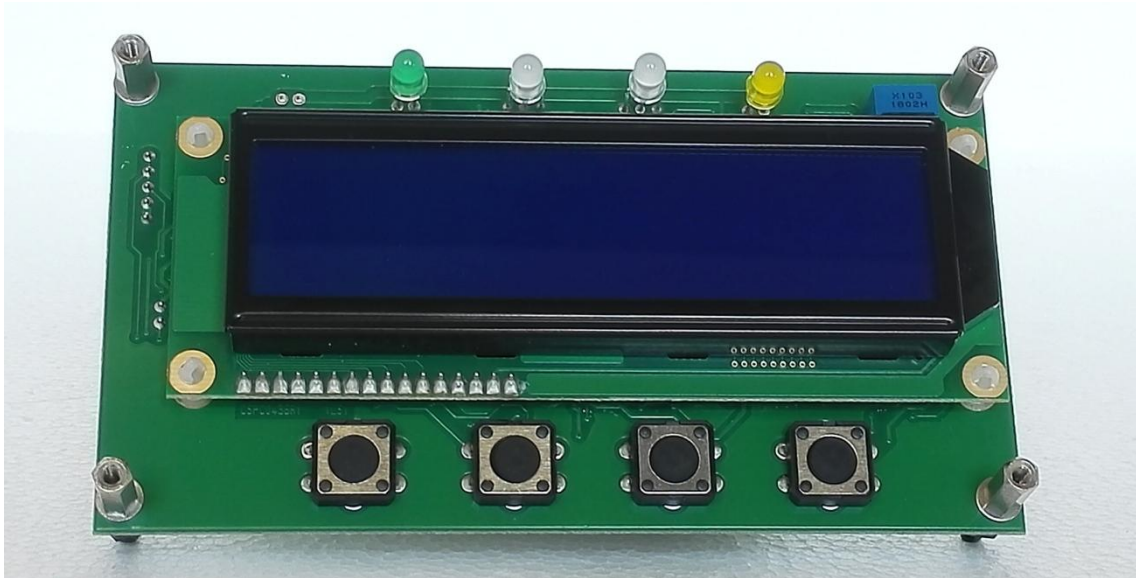
4. Control Card - SLCNTMOS07.150



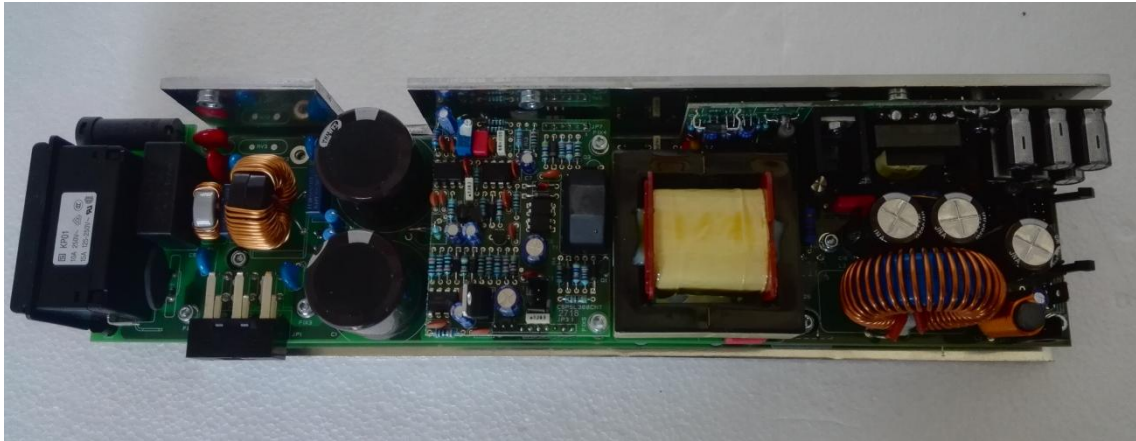
5. Power Amplifier - SLPA150TEXR2



6. Panel Card - SLPC0436R01V01



7. Power Supply - KPSL3010R01A



8. Telemetry Card - SLTLMTXLCD03



R.V.R. Elettronica s.r.l.
Via del Fonditore, 2/2c - 40138 Bologna-Italy
P.lva - Val.no. IT 02124450376
Tel. +39 051 6010506 - Fax +39 051 6011104
Certified - UNI EN ISO 9001
Valentino Biavati
CEO / President