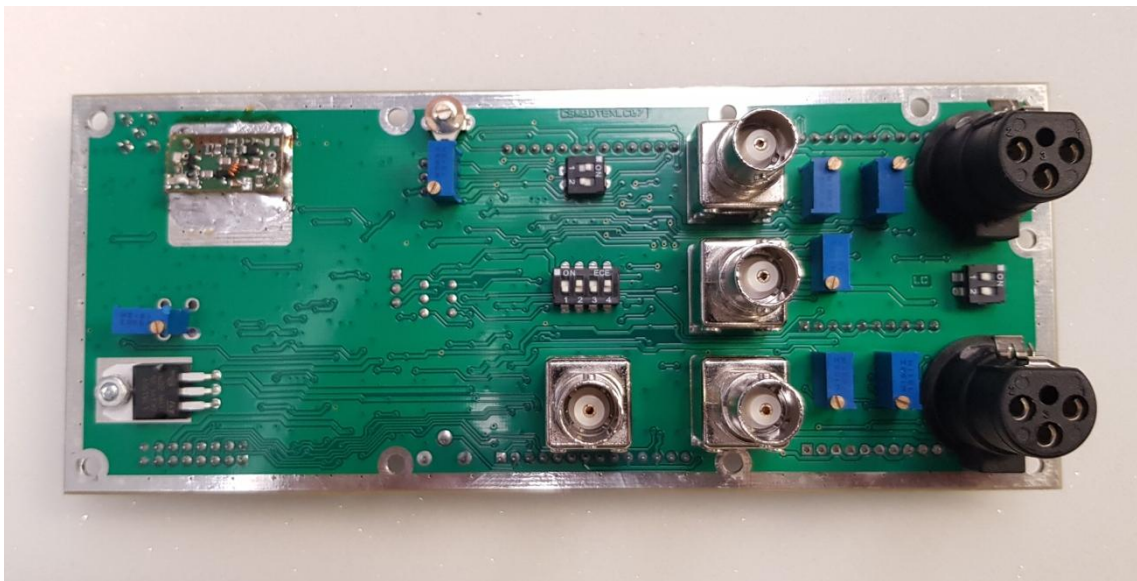
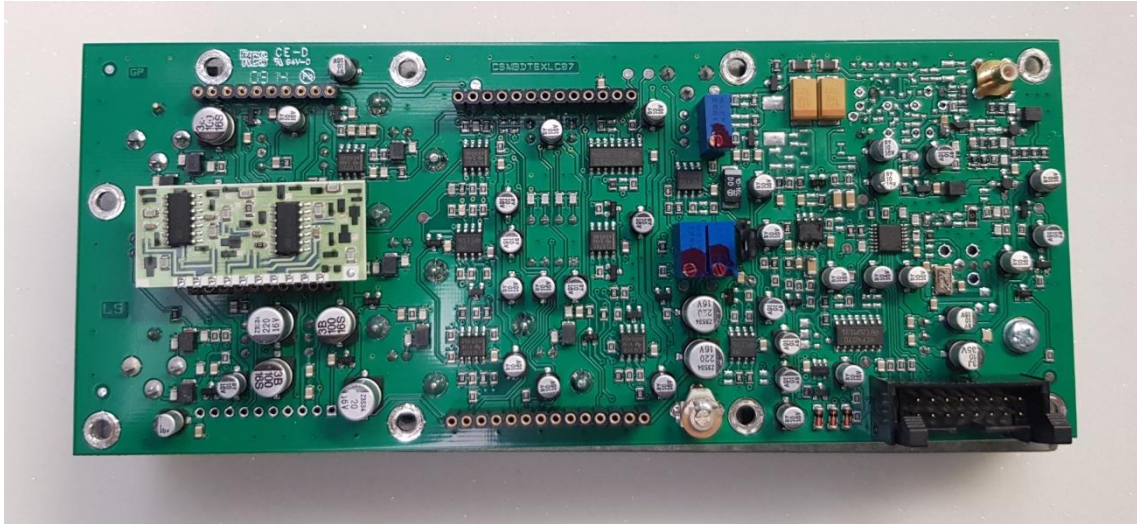


PTRL-LCD

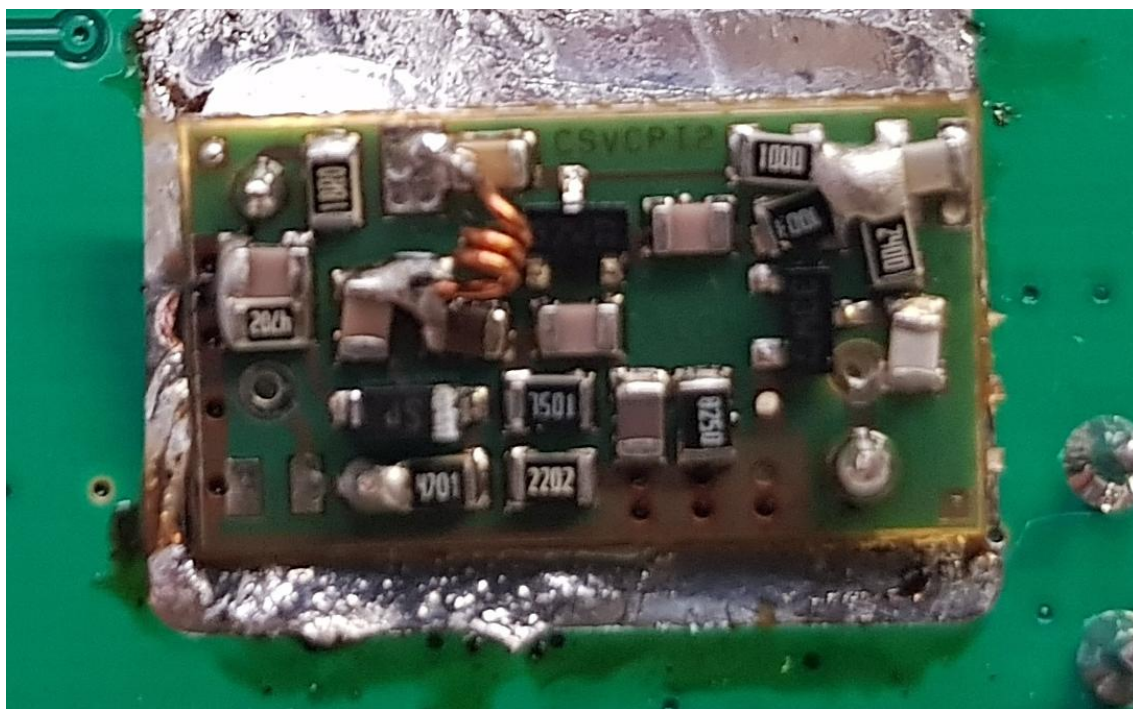
1. Inner View



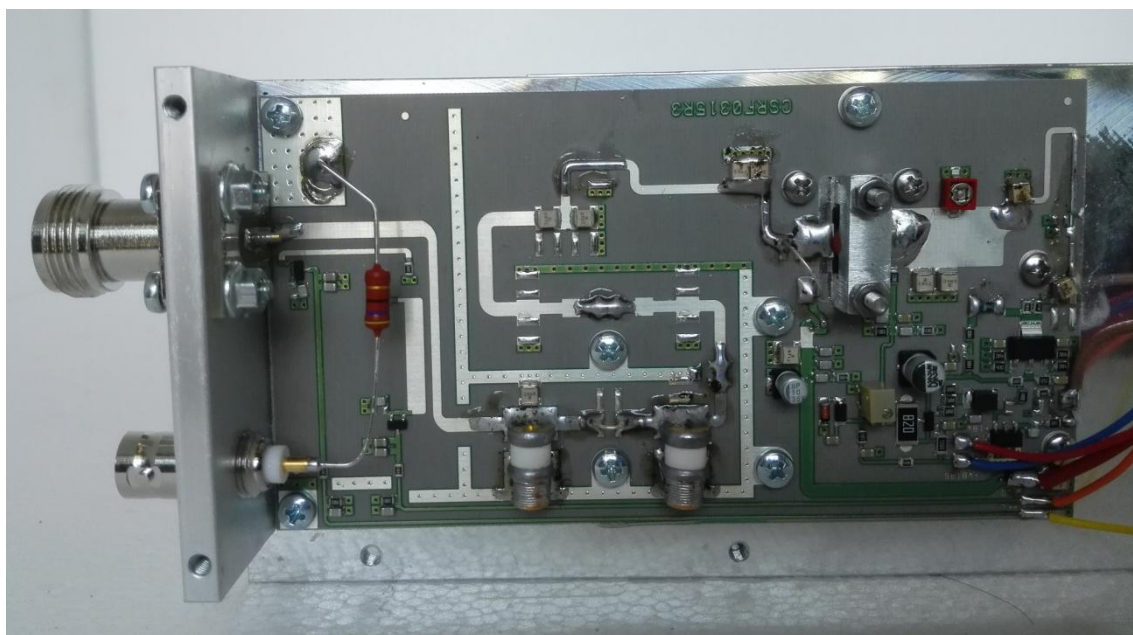
1. Main Board - SLMA0383R01V02



2. VCO Card (RIS800MHz) Band 780-980 MHz - SL007VC1303



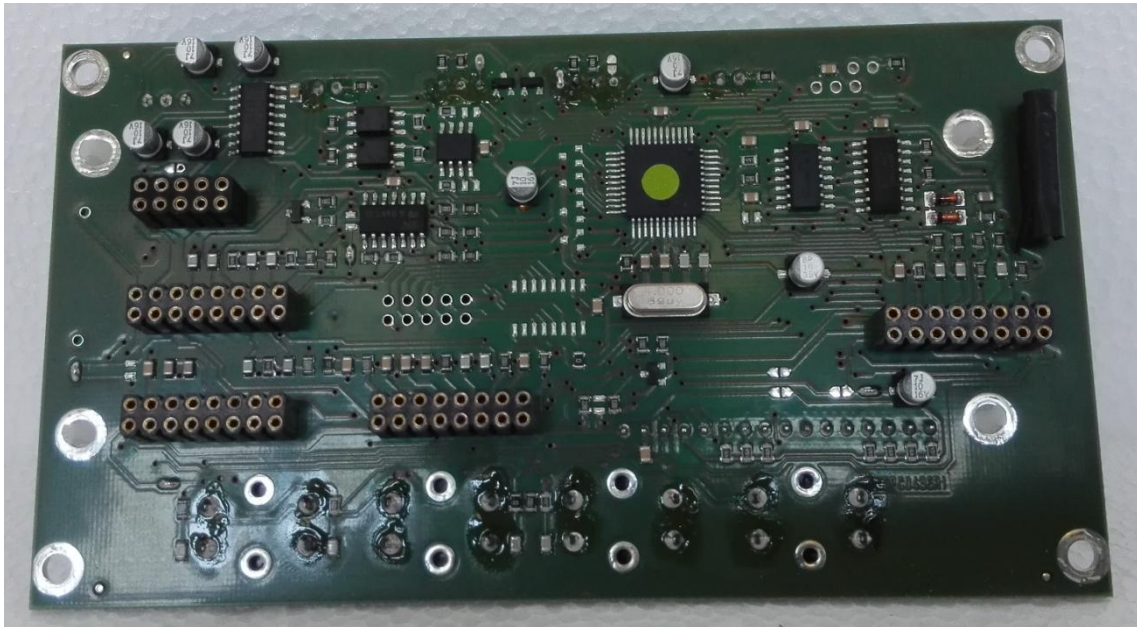
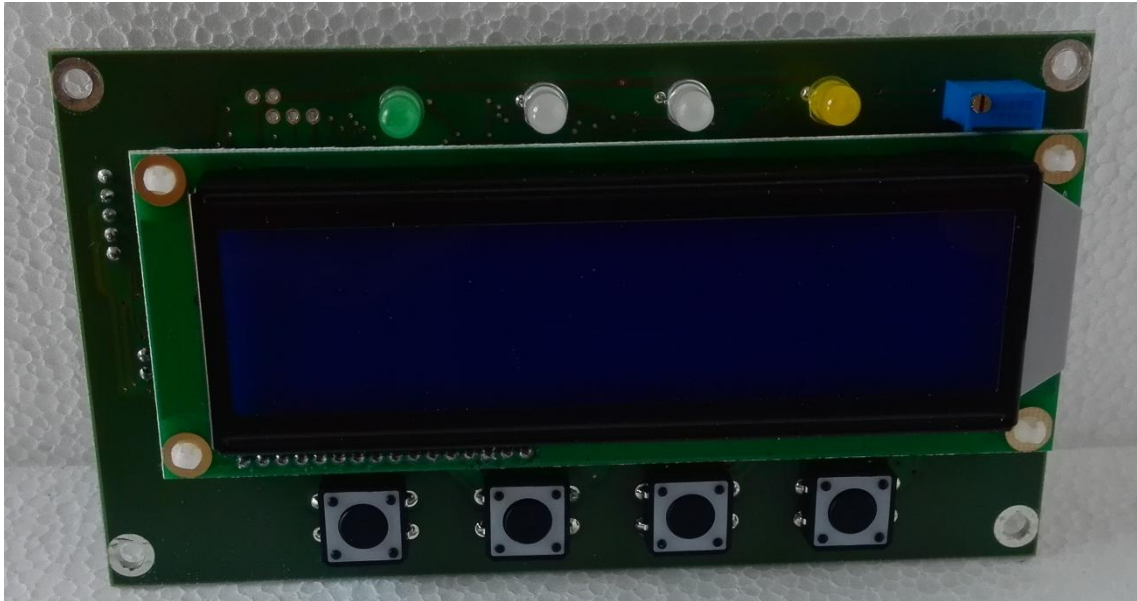
3. Power Amplifier Band 780-980 MHz - SLRF0315R03V06



4. RF Control Card - SLCNTMOS07.LNK



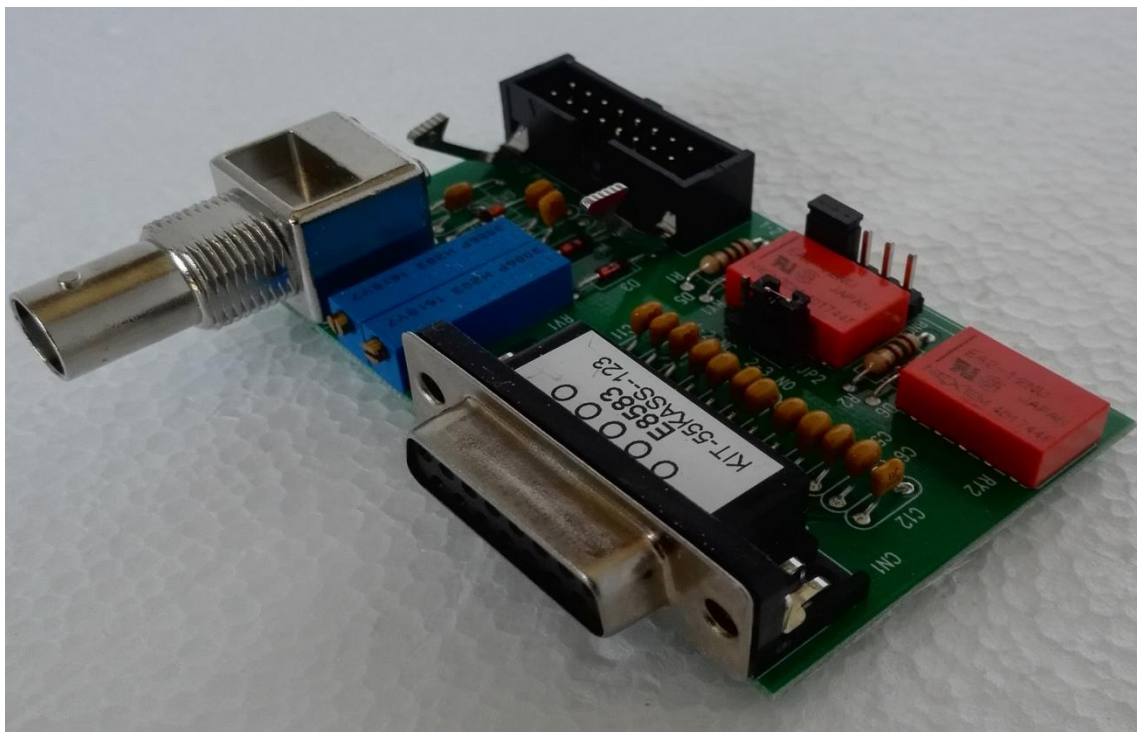
5. Panel Card - SLPC0436R01V01



6. Power Supply - KPSL2804V01B



7. Telemetry Card - SLTLMTXLCD03



R.V.R. Elettronica s.r.l.
Via del Fonditore, 2/2c - 40138 Bologna-Italy
P.Iva - Vat.no. IT 02124450376
Tel. +39 051 6010506 - Fax +39 051 6011104
Certified - UNI EN ISO 9001
Valentino Biavati
CEO / President