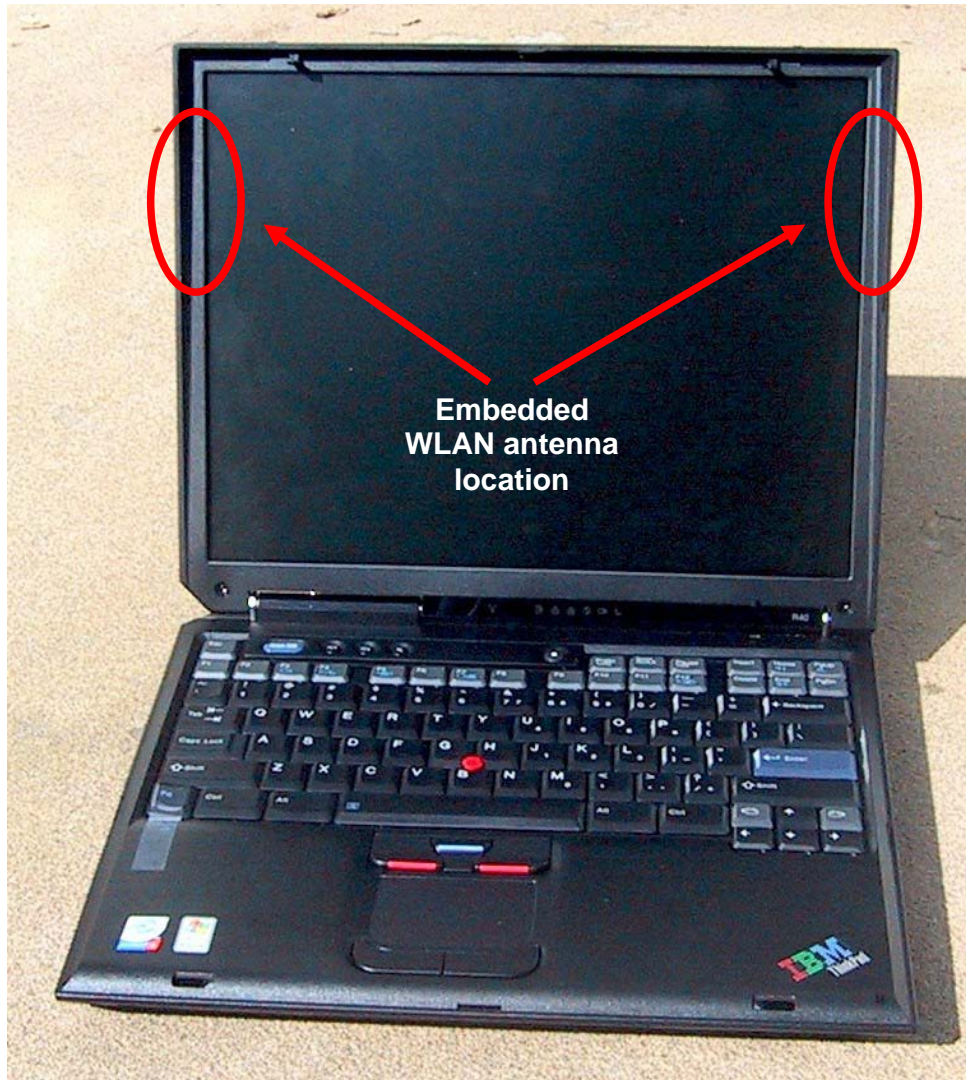


**Photographs of  
2.4 GHz / 5 GHz dual band Hitachi WLAN antenna assembly  
of ISL39200M miniPCI WLAN card assembled in IBM R40 Notebook Host.**

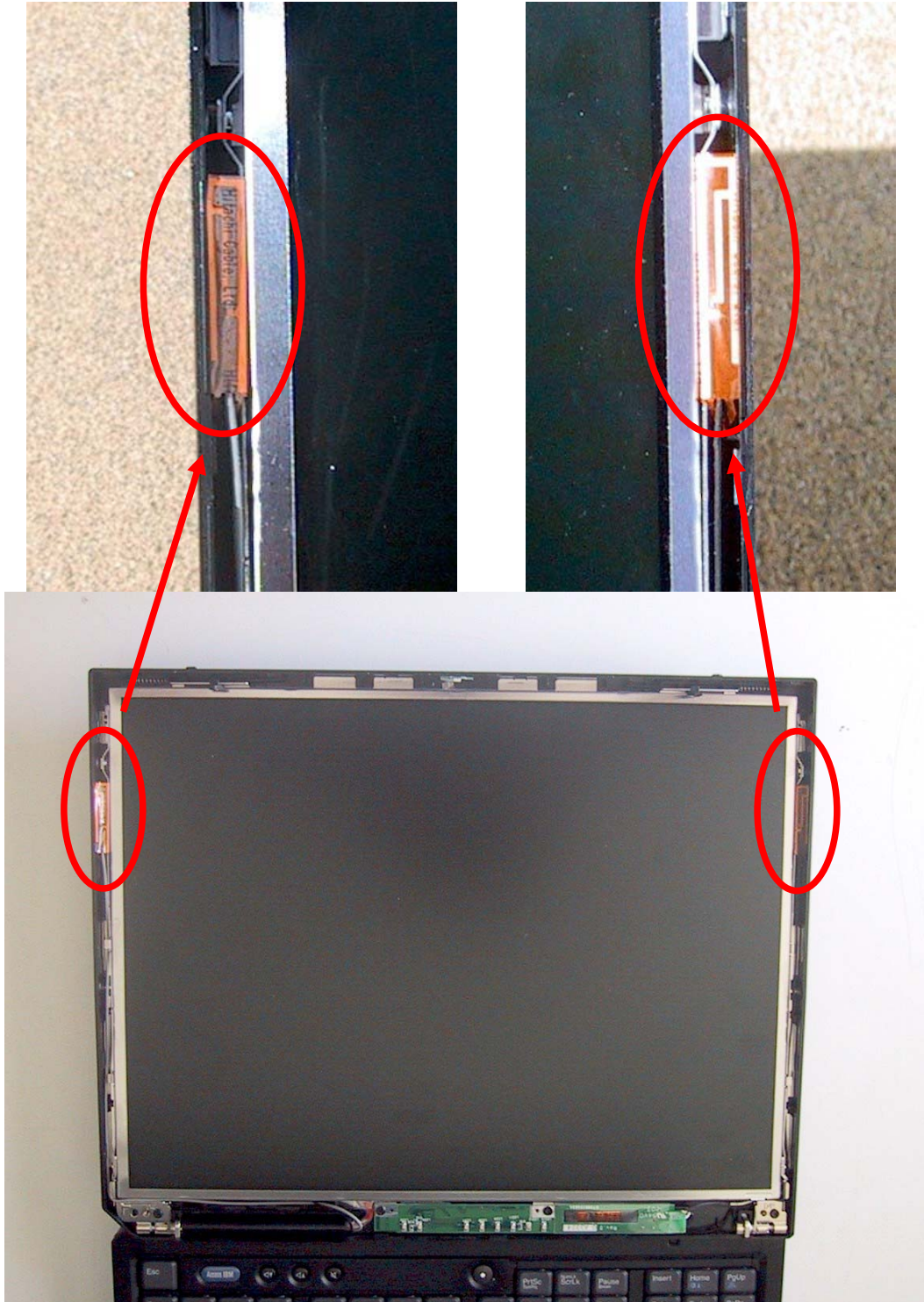
**WLAN miniPCI Card details:**

**Description: dual band 2.4 GHz / 5 GHz WLAN MiniPCI Card  
FCC ID: RGS39200M1  
Brand name: GlobespanVirata  
Model number: ISL39200M**

**Overview of IBM R40 Host Notebook PC  
with embedded Hitachi WLAN antenna location**



**2.4 GHz / 5 GHz Hitachi WLAN antennas mounted on left and right sides of TFT display of IBM R40 Notebook Host**



**Left side main antenna assembly**



Main antenna: Hitachi 2.4 GHz / 5 GHz dual band inverted F type antenna  
Rated gain in 2.4 GHz / 5 GHz band (incl. 530 mm ant. cable loss): 3.0 dBi

**Right side aux antenna assembly**



Aux. antenna: Hitachi 2.4 GHz / 5 GHz dual band inverted F type antenna  
Rated gain in 2.4 GHz / 5 GHz band (incl. 640 mm ant. cable loss): 2.0 dBi

**ISL39200M miniPCI WLAN card  
assembly in IBM R40 Notebook Host**

