

## Appendix B: Test Results of FCC 15B & ICES-003

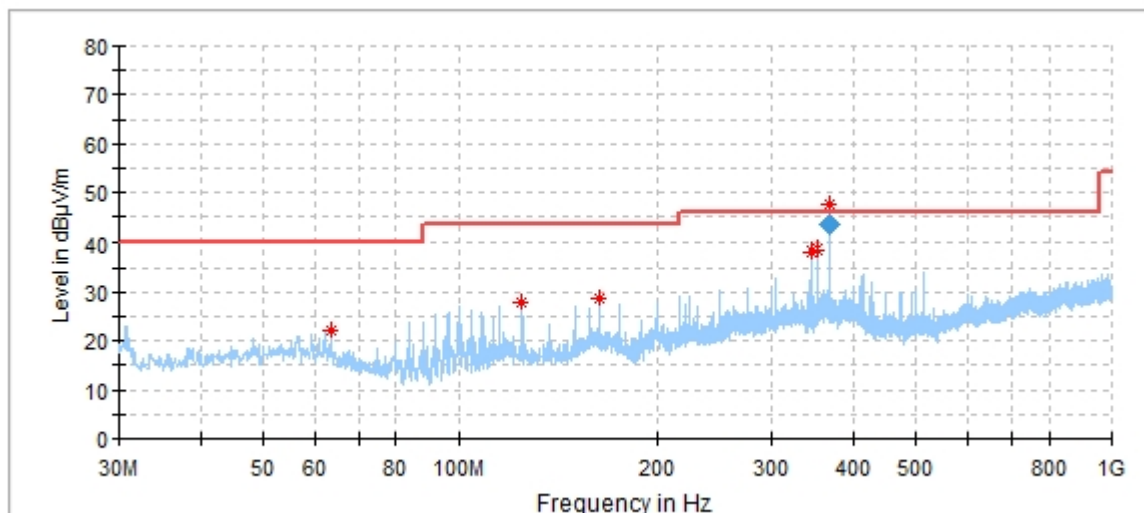
<b>APPENDIX B: TEST RESULTS OF FCC 15B &amp; ICES-003 .....</b>	<b>1</b>
<b>APPENDIX B.1: TEST PLOTS OF RADIATED EMISSION, BELOW 1GHZ .....</b>	<b>2</b>
<i>Print by USB +Print by RJ45 + NFC mode .....</i>	<i>2</i>
<b>APPENDIX B.2: TEST PLOTS OF RADIATED EMISSION, ABOVE 1GHZ.....</b>	<b>4</b>
<i>Print by USB +Print by RJ45 + NFC mode .....</i>	<i>4</i>
<b>APPENDIX B.3: TEST PLOTS OF CONDUCTED EMISSIONS ON AC MAINS .....</b>	<b>6</b>

## Appendix B.1: Test Plots of Radiated Emission, Below 1GHz

Print by USB +Print by RJ45 + NFC mode

### EUT Information

EUT Name:	Label maker
Model:	LabelWriter 550 Turbo
Order No:	168292739 Item
Test Mode:	ON
Test Voltage:	AC 120V/60Hz
Test By:	Ouyang Wang
Review By:	Gary Chen
Remark:	3m Chamber



### Critical\_Freqs

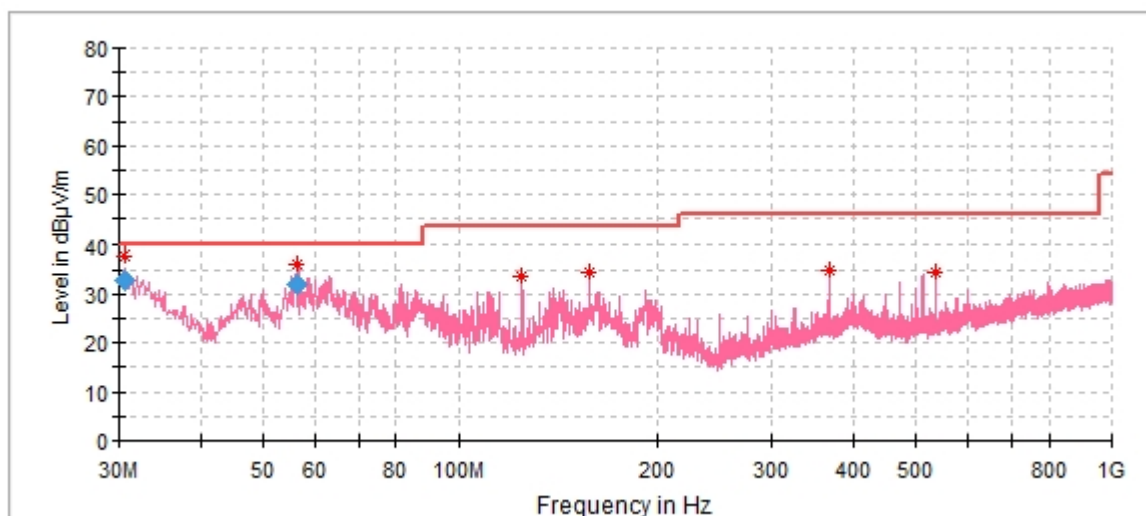
Frequency (MHz)	MaxPeak (dBµV/m)	Limit (dBµV/m)	Margin (dB)	Height (cm)	Pol	Azimuth (deg)	Corr. (dB/m)
63.465000	22.08	40.00	17.92	100.0	H	135.0	20
124.963000	28.04	43.50	15.46	100.0	H	194.0	19
162.696000	28.54	43.50	14.96	100.0	H	348.0	21
346.511000	38.06	46.00	7.94	100.0	H	143.0	22
353.980000	38.48	46.00	7.52	100.0	H	119.0	22
367.523000	47.65	46.00	-1.65	100.0	H	120.0	23

### Final\_Result

Frequency (MHz)	QuasiPeak (dBµV/m)	Limit (dBµV/m)	Margin (dB)	Meas. Time (ms)	Bandwidth (kHz)	Height (cm)	Pol	Azimuth (deg)	Corr. (dB/m)
367.523000	43.66	46.00	2.34	1000.0	120.000	100.0	H	120.0	23

## EUT Information

EUT Name:	Label maker
Model:	LabelWriter 550 Turbo
Order No:	168292739 Item
Test Mode:	ON
Test Voltage:	AC 120V/60Hz
Test By:	Ouyang Wang
Review By:	Gary Chen
Remark:	3m Chamber



## Critical Freqs

Frequency (MHz)	MaxPeak (dBµV/m)	Limit (dBµV/m)	Margin (dB)	Height (cm)	Pol	Azimuth (deg)	Corr. (dB/m)
30.642000	37.94	40.00	2.06	100.0	V	347.0	18
56.501000	36.20	40.00	3.80	137.0	V	40.0	21
124.963000	33.59	43.50	9.91	100.0	V	358.0	19
157.458000	34.58	43.50	8.92	100.0	V	337.0	22
367.560000	34.82	46.00	11.18	100.0	V	40.0	23
535.467000	34.58	46.00	11.42	100.0	V	36.0	25

## Final Result

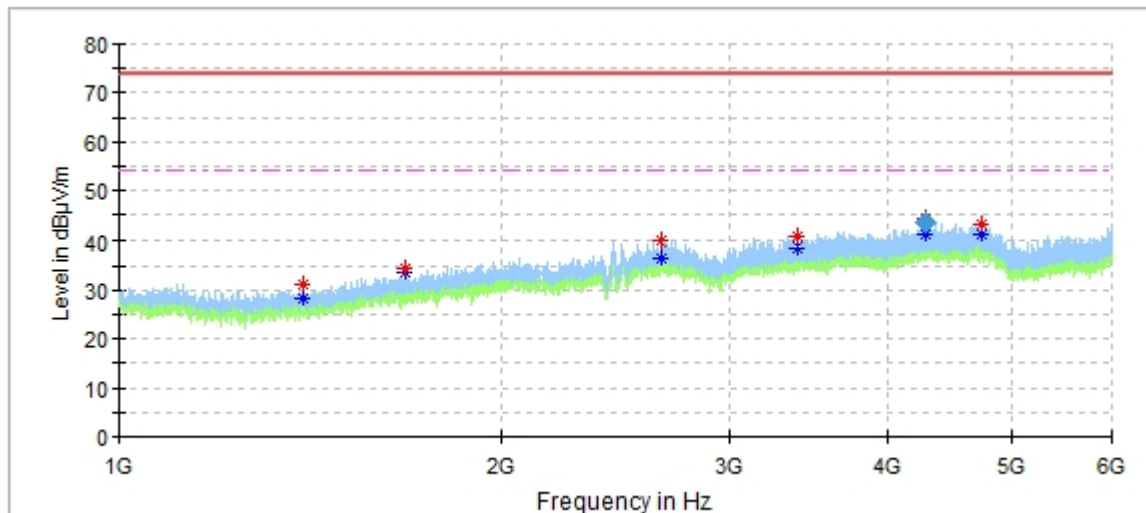
Frequency (MHz)	QuasiPeak (dBµV/m)	Limit (dBµV/m)	Margin (dB)	Meas. Time (ms)	Bandwidth (kHz)	Height (cm)	Pol	Azimuth (deg)	Corr. (dB/m)
30.642000	32.66	40.00	7.34	1000.0	120.000	100.0	V	347.0	18
56.501000	32.18	40.00	7.82	1000.0	120.000	137.0	V	40.0	21

## Appendix B.2: Test Plots of Radiated Emission, Above 1GHz

Print by USB +Print by RJ45 + NFC mode

### EUT Information

EUT Name:	Label maker
Model:	LabelWriter 550 Turbo
Order No:	168292739 Item
Test Mode:	ON
Test Voltage:	AC 120V/60Hz
Test By:	Ouyang Wang
Review By:	Gary Chen
Remark:	3m Chamber



### Critical\_Freqs

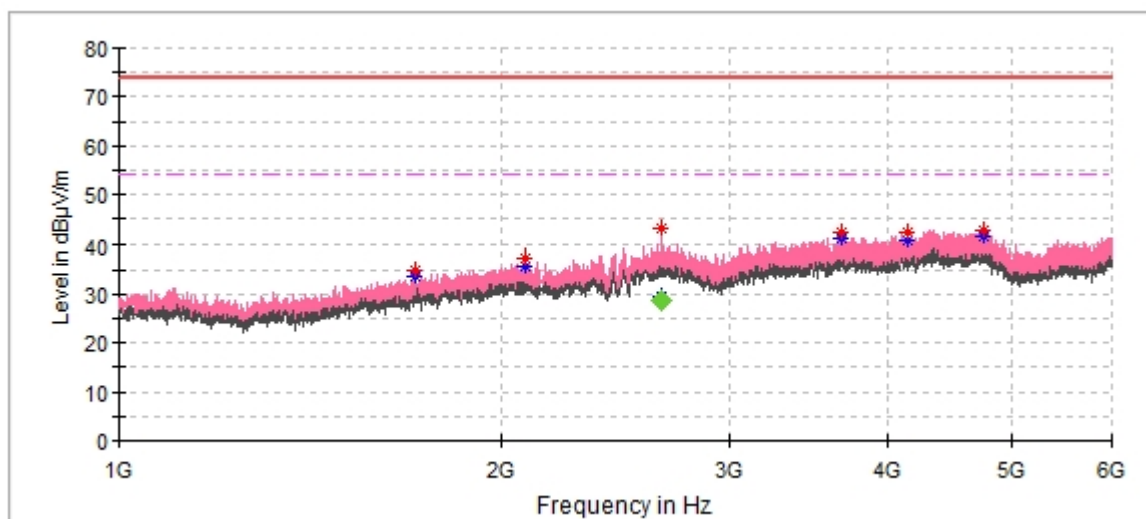
Frequency (MHz)	MaxPeak (dBµV/m)	Average (dBµV/m)	Limit (dBµV/m)	Margin (dB)	Height (cm)	Pol	Azimuth (deg)	Corr. (dB/m)
1396.500000	---	28.43	54.00	25.57	100.0	H	316.0	-13
1396.500000	31.02	---	74.00	42.98	100.0	H	316.0	-13
1678.000000	34.47	---	74.00	39.53	100.0	H	16.0	-10
1678.000000	---	33.68	54.00	20.32	100.0	H	16.0	-10
2654.000000	---	36.60	54.00	17.40	100.0	H	188.0	-3
2655.000000	39.76	---	74.00	34.24	100.0	H	268.0	-3
3403.500000	40.69	---	74.00	33.31	100.0	H	94.0	-2
3403.500000	---	38.48	54.00	15.52	100.0	H	94.0	-2
4281.000000	---	41.15	54.00	12.85	100.0	H	169.0	2
4287.400000	44.39	---	74.00	29.61	100.0	H	154.0	2
4745.000000	---	41.03	54.00	12.97	100.0	H	44.0	3
4745.000000	43.14	---	74.00	30.86	100.0	H	44.0	3

### Final\_Result

Frequency (MHz)	MaxPeak (dBµV/m)	Average (dBµV/m)	Limit (dBµV/m)	Margin (dB)	Height (cm)	Pol	Azimuth (deg)	Corr. (dB/m)
4287.400000	43.38	---	74.00	30.62	100.0	H	154.0	2

## EUT Information

EUT Name:	Label maker
Model:	LabelWriter 550 Turbo
Order No:	168292739 Item
Test Mode:	ON
Test Voltage:	AC 120V/60Hz
Test By:	Ouyang Wang
Review By:	Gary Chen
Remark:	3m Chamber



## Critical Freqs

Frequency (MHz)	MaxPeak (dBµV/m)	Average (dBµV/m)	Limit (dBµV/m)	Margin (dB)	Height (cm)	Pol	Azimuth (deg)	Corr. (dB/m)
1709.500000	---	33.53	54.00	20.47	100.0	V	172.0	-10
1709.500000	34.82	---	74.00	39.18	100.0	V	172.0	-10
2083.500000	37.25	---	74.00	36.75	100.0	V	83.0	-7
2083.500000	---	35.66	54.00	18.34	100.0	V	83.0	-7
2659.500000	43.17	---	74.00	30.83	100.0	V	230.0	-3
2660.300000	---	29.37	54.00	24.63	100.0	V	170.0	-3
3683.000000	---	40.97	54.00	13.03	100.0	V	187.0	0
3683.000000	42.16	---	74.00	31.84	100.0	V	187.0	0
4147.500000	42.27	---	74.00	31.73	100.0	V	115.0	1
4147.500000	---	40.67	54.00	13.33	100.0	V	115.0	1
4765.000000	---	41.39	54.00	12.61	100.0	V	230.0	3
4765.000000	42.61	---	74.00	31.39	100.0	V	230.0	3

## Final Result

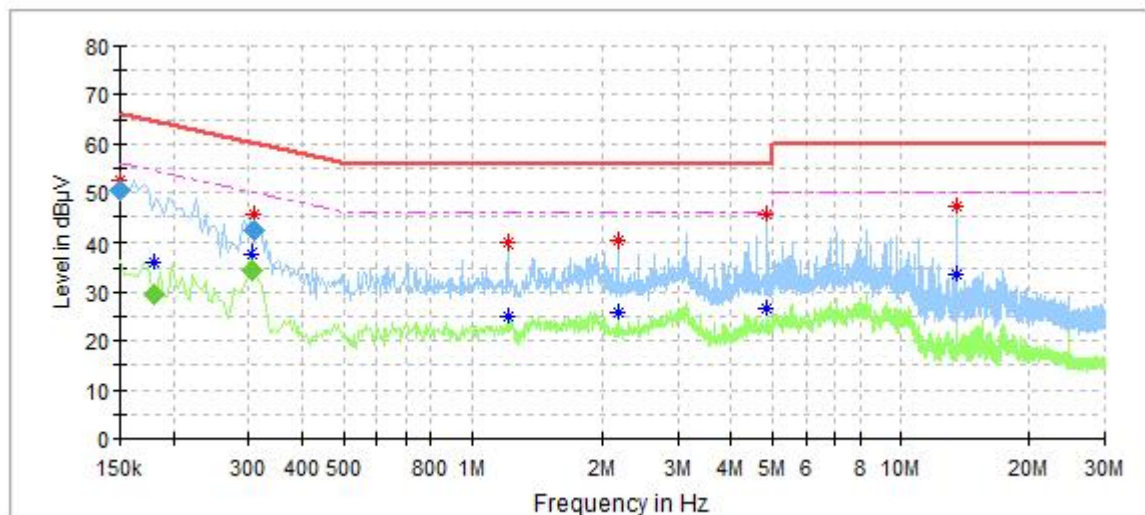
Frequency (MHz)	MaxPeak (dBµV/m)	Average (dBµV/m)	Limit (dBµV/m)	Margin (dB)	Height (cm)	Pol	Azimuth (deg)	Corr. (dB/m)
2660.300000	---	28.89	54.00	25.11	100.0	V	170.0	-3

## Appendix B.3: Test Plots of Conducted Emissions on AC Mains

Print by RJ45 + NFC mode

### EUT Information

EUT Name:	Label maker
Order No.:	168292739 Item
Model:	LabelWriter 550 Turbo
Test Mode:	ON
Test Voltage:	AC 110V/60Hz
Test By:	Ouyang Wang
Review By:	Gary Chen
Remark:	SR1



### Critical Freqs

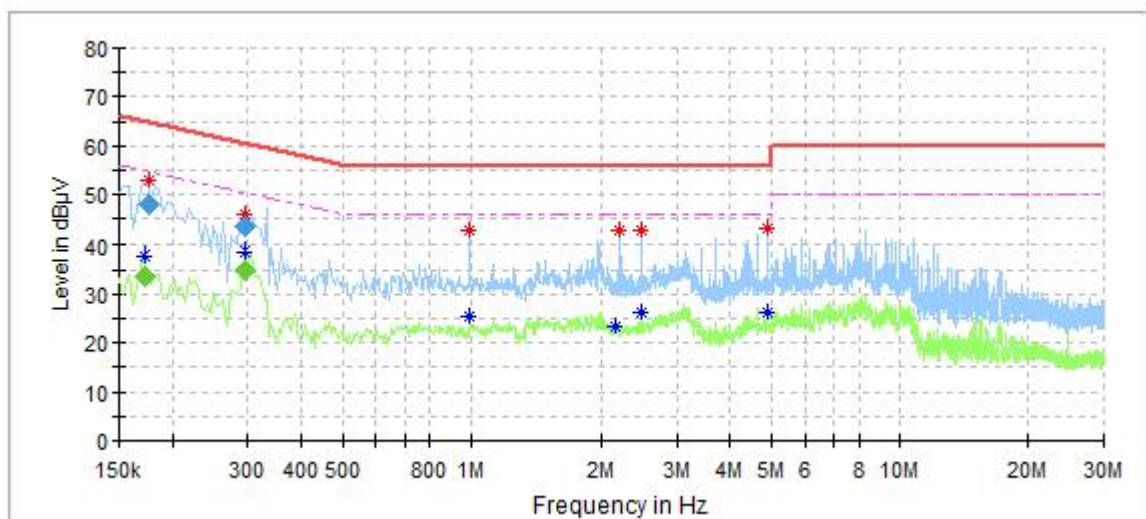
Frequency (MHz)	MaxPeak (dBµV)	Average (dBµV)	Limit (dBµV)	Margin (dB)	Line	Corr. (dB)
0.150000	52.52	---	65.36	12.84	L1	9.6
0.180500	---	36.18	54.96	18.78	L1	9.6
0.304500	---	37.70	50.19	12.49	L1	9.6
0.308500	45.40	---	60.19	14.79	L1	9.6
1.212000	---	24.90	46.00	21.10	L1	9.7
1.212000	39.98	---	56.00	16.02	L1	9.7
2.168000	---	25.68	46.00	20.32	L1	9.7
2.168000	40.31	---	56.00	15.69	L1	9.7
4.868000	---	26.47	46.00	19.53	L1	9.9
4.868000	45.62	---	56.00	10.38	L1	9.9
13.532000	---	33.58	50.00	16.42	L1	10.2
13.532000	47.03	---	60.00	12.97	L1	10.2

### Final Result

Frequency (MHz)	QuasiPeak (dBµV)	Average (dBµV)	Limit (dBµV)	Margin (dB)	Meas. Time (ms)	Bandwidth (kHz)	Line	Corr. (dB)
0.150000	50.50	---	66.00	15.50	200.0	9.000	L1	9.6
0.180500	---	29.45	54.46	25.01	200.0	9.000	L1	9.6
0.304500	---	34.64	50.12	15.48	200.0	9.000	L1	9.6
0.308500	42.38	---	60.01	17.63	200.0	9.000	L1	9.6

## EUT Information

EUT Name:	Label maker
Order No.:	168292739 Item
Model:	LabelWriter 550 Turbo
Test Mode:	ON
Test Voltage:	AC 110V/60Hz
Test By:	Ouyang Wang
Review By:	Gary Chen
Remark:	SR1



## Critical Freqs

Frequency (MHz)	MaxPeak (dBµV)	Average (dBµV)	Limit (dBµV)	Margin (dB)	Line	Corr. (dB)
0.172500	---	37.94	54.96	17.02	N	9.6
0.176500	52.78	---	64.96	12.18	N	9.6
0.296500	---	38.39	50.08	11.69	N	9.6
0.296500	45.77	---	60.08	14.31	N	9.6
0.992000	---	25.62	46.00	20.38	N	9.7
0.992000	42.82	---	56.00	13.18	N	9.7
2.164000	---	23.25	46.00	22.75	N	9.7
2.212000	42.63	---	56.00	13.37	N	9.7
2.480000	42.82	---	56.00	13.18	N	9.8
2.480000	---	26.37	46.00	19.63	N	9.8
4.912000	43.22	---	56.00	12.78	N	9.9
4.916000	---	26.41	46.00	19.59	N	9.9

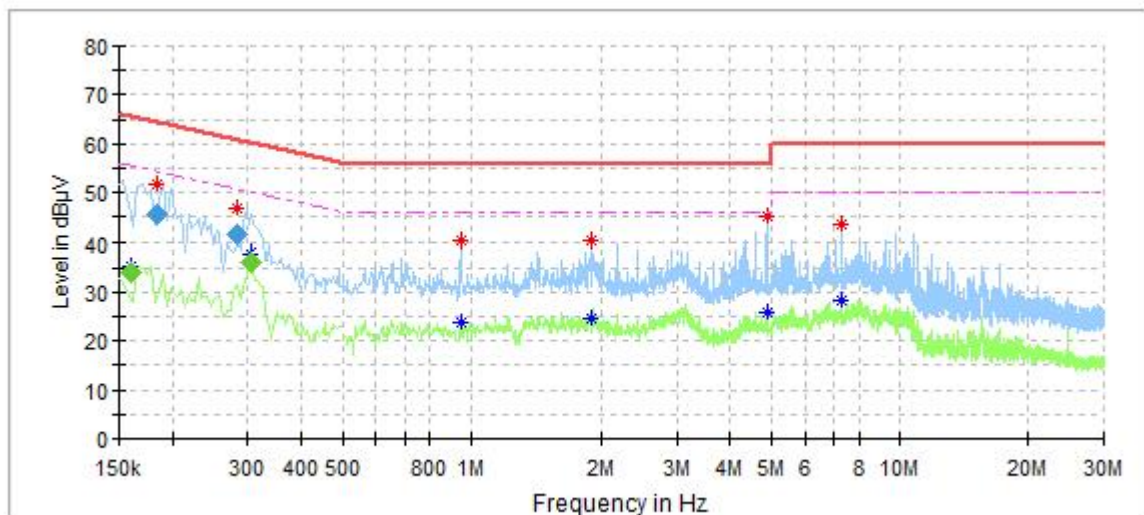
## Final Result

Frequency (MHz)	QuasiPeak (dBµV)	Average (dBµV)	Limit (dBµV)	Margin (dB)	Meas. Time (ms)	Bandwidth (kHz)	Line	Corr. (dB)
0.172500	---	33.49	54.84	21.35	200.0	9.000	N	9.6
0.176500	48.04	---	64.65	16.60	200.0	9.000	N	9.6
0.296500	---	34.76	50.34	15.58	200.0	9.000	N	9.6
0.296500	43.66	---	60.34	16.68	200.0	9.000	N	9.6

Print by USB + NFC mode

## EUT Information

EUT Name:	Label maker
Order No.:	168292739 Item
Model:	LabelWriter 550 Turbo
Test Mode:	ON
Test Voltage:	AC 120V/60Hz
Test By:	Ouyang Wang
Review By:	Gary Chen
Remark:	SR1



## Critical Freqs

Frequency (MHz)	MaxPeak (dBµV)	Average (dBµV)	Limit (dBµV)	Margin (dB)	Line	Corr. (dB)
0.160500	---	35.45	55.16	19.71	L1	9.6
0.183500	51.85	---	64.96	13.11	L1	9.6
0.284500	46.95	---	60.30	13.35	L1	9.6
0.304500	---	37.81	50.08	12.27	L1	9.6
0.948000	---	23.77	46.00	22.23	L1	9.7
0.948000	40.18	---	56.00	15.82	L1	9.7
1.892000	---	24.66	46.00	21.34	L1	9.7
1.892000	40.40	---	56.00	15.60	L1	9.7
4.872000	---	25.80	46.00	20.20	L1	9.9
4.872000	45.15	---	56.00	10.85	L1	9.9
7.308000	---	28.23	50.00	21.77	L1	10.0
7.308000	43.38	---	60.00	16.62	L1	10.0

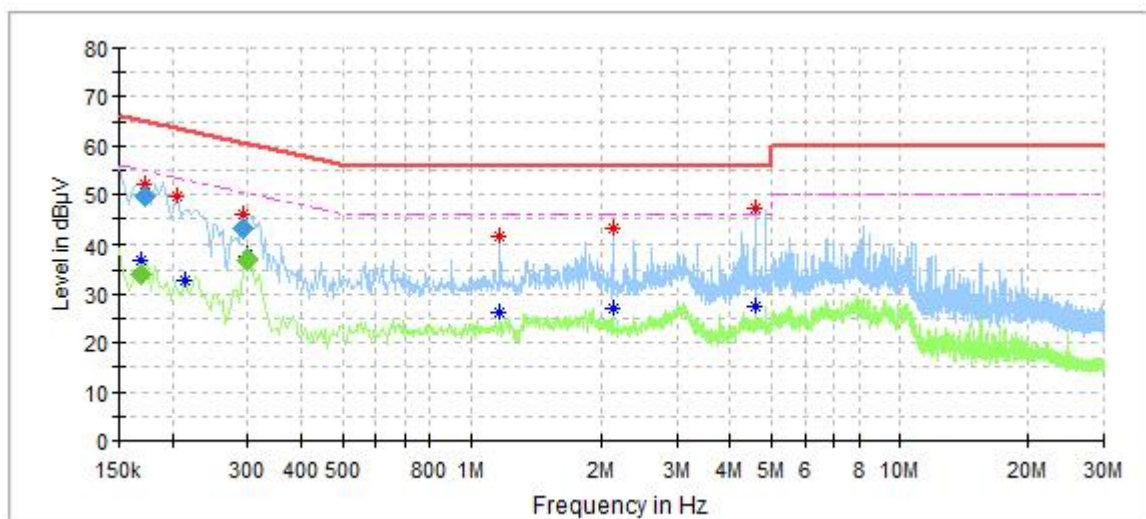
## Final Result

Frequency (MHz)	QuasiPeak (dBµV)	Average (dBµV)	Limit (dBµV)	Margin (dB)	Meas. Time (ms)	Bandwidth (kHz)	Line	Corr. (dB)
0.160500	---	34.01	55.44	21.43	200.0	9.000	L1	9.6
0.183500	45.73	---	64.33	18.60	200.0	9.000	L1	9.6
0.284500	41.38	---	60.68	19.30	200.0	9.000	L1	9.6
0.304500	---	36.05	50.12	14.07	200.0	9.000	L1	9.6



## EUT Information

EUT Name:	Label maker
Order No.:	168292739 Item
Model:	LabelWriter 550 Turbo
Test Mode:	ON
Test Voltage:	AC 120V/60Hz
Test By:	Ouyang Wang
Review By:	Gary Chen
Remark:	SR1



## Critical\_Freqs

Frequency (MHz)	MaxPeak (dBµV)	Average (dBµV)	Limit (dBµV)	Margin (dB)	Line	Corr. (dB)
0.168500	---	36.92	54.77	17.85	N	9.6
0.172500	52.21	---	64.39	12.19	N	9.6
0.206000	49.45	---	63.37	13.92	N	9.6
0.214000	---	32.92	53.05	20.13	N	9.6
0.292500	46.15	---	60.19	14.04	N	9.6
0.300500	---	37.85	50.19	12.34	N	9.6
1.168000	41.39	---	56.00	14.61	N	9.7
1.168000	---	26.18	46.00	19.82	N	9.7
2.124000	---	27.02	46.00	18.98	N	9.7
2.124000	42.95	---	56.00	13.05	N	9.7
4.564000	---	27.42	46.00	18.58	N	9.9
4.564000	47.10	---	56.00	8.90	N	9.9

## Final\_Result

Frequency (MHz)	QuasiPeak (dBµV)	Average (dBµV)	Limit (dBµV)	Margin (dB)	Meas. Time (ms)	Bandwidth (kHz)	Line	Corr. (dB)
0.168500	---	33.99	55.03	21.05	200.0	9.000	N	9.6
0.172500	49.58	---	64.84	15.26	200.0	9.000	N	9.6
0.292500	43.11	---	60.45	17.35	200.0	9.000	N	9.6
0.300500	---	37.05	50.23	13.18	200.0	9.000	N	9.6