

A circular black speaker with a white and blue cable connected to its center, resting on a light-colored wooden surface. The speaker has a black frame with four copper-colored mounting points. The central hub is black and features a small label with text: "C2001", "100W", "4Ω", "100Hz", "100V", "100W". The cable is connected to a white plastic connector on the hub.



Photo for the EUT





Photo for the EUT

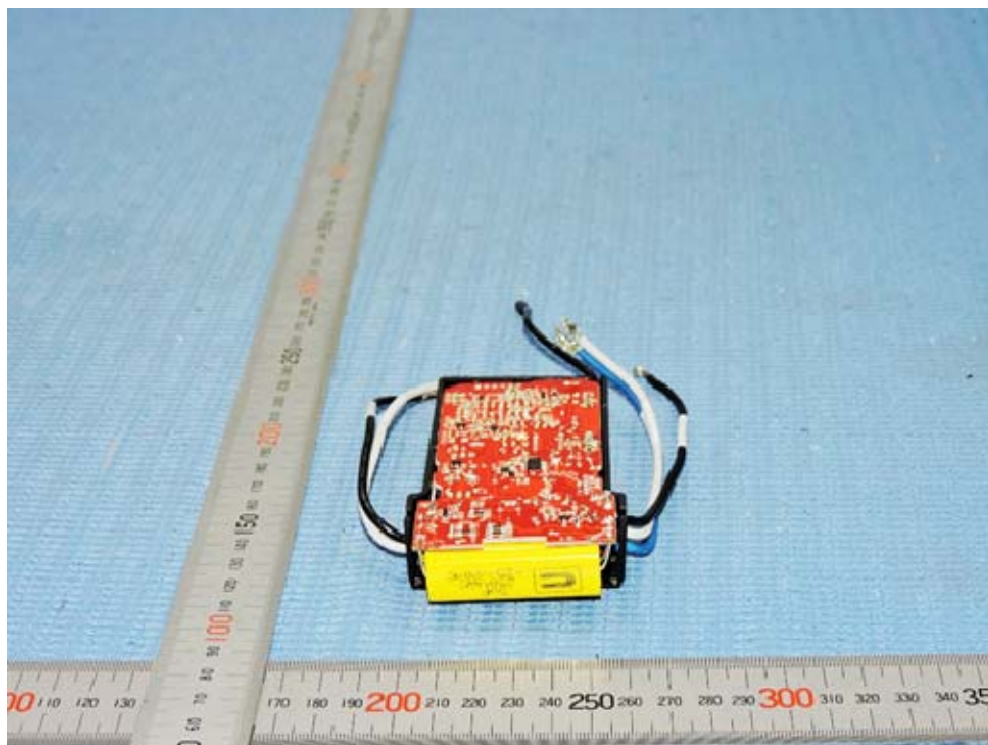
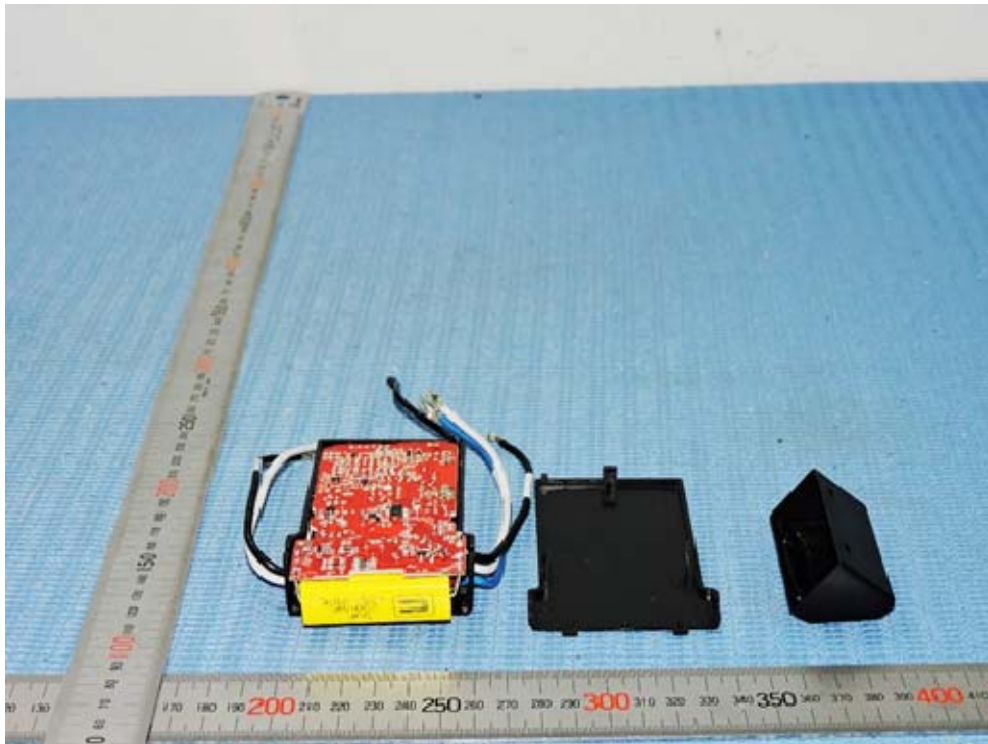


Photo for the EUT

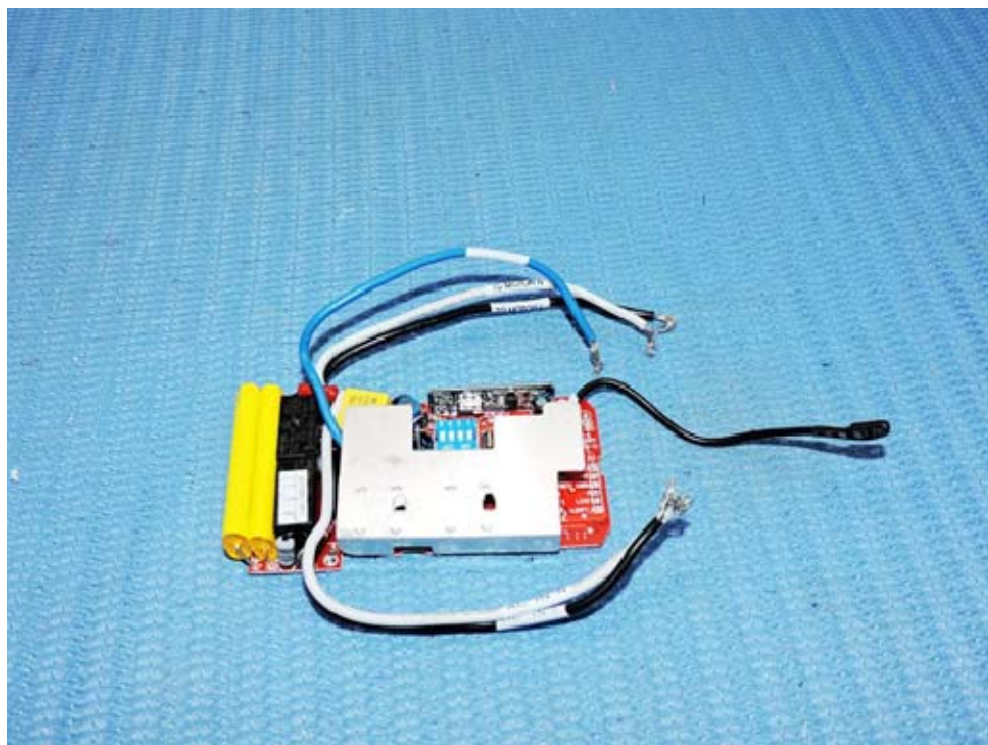
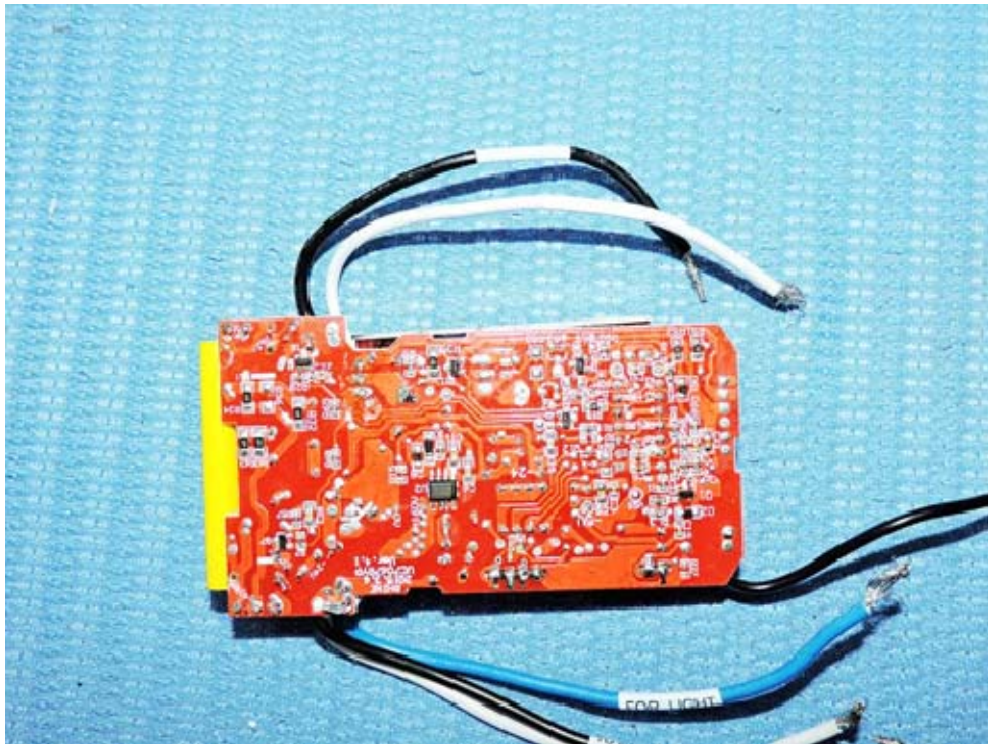




Photo for the EUT

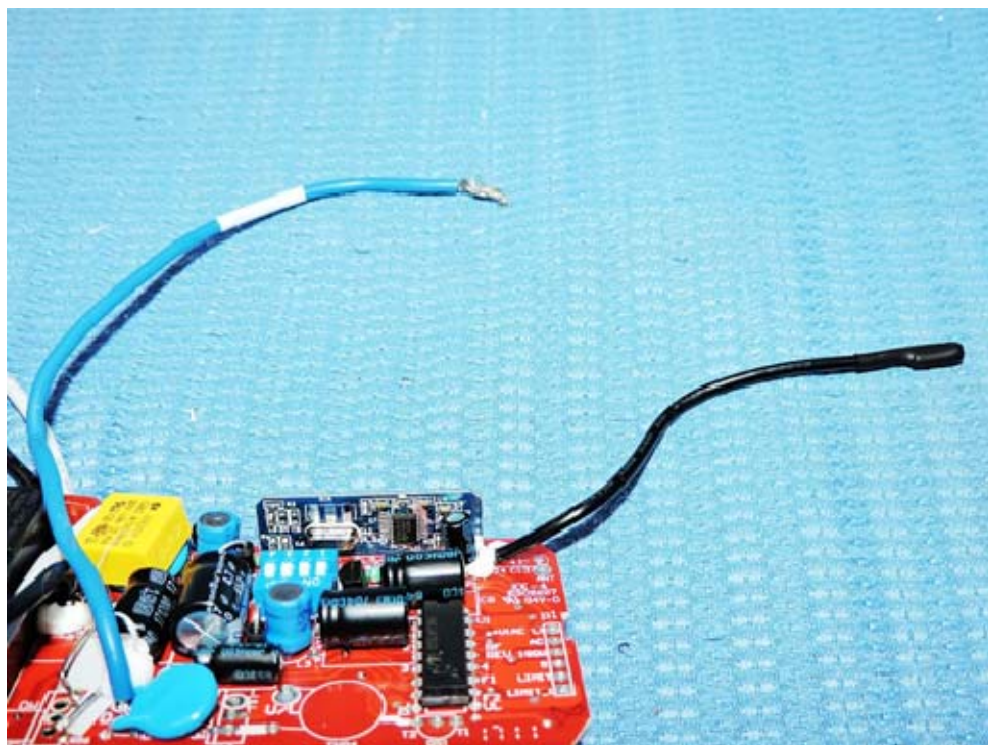
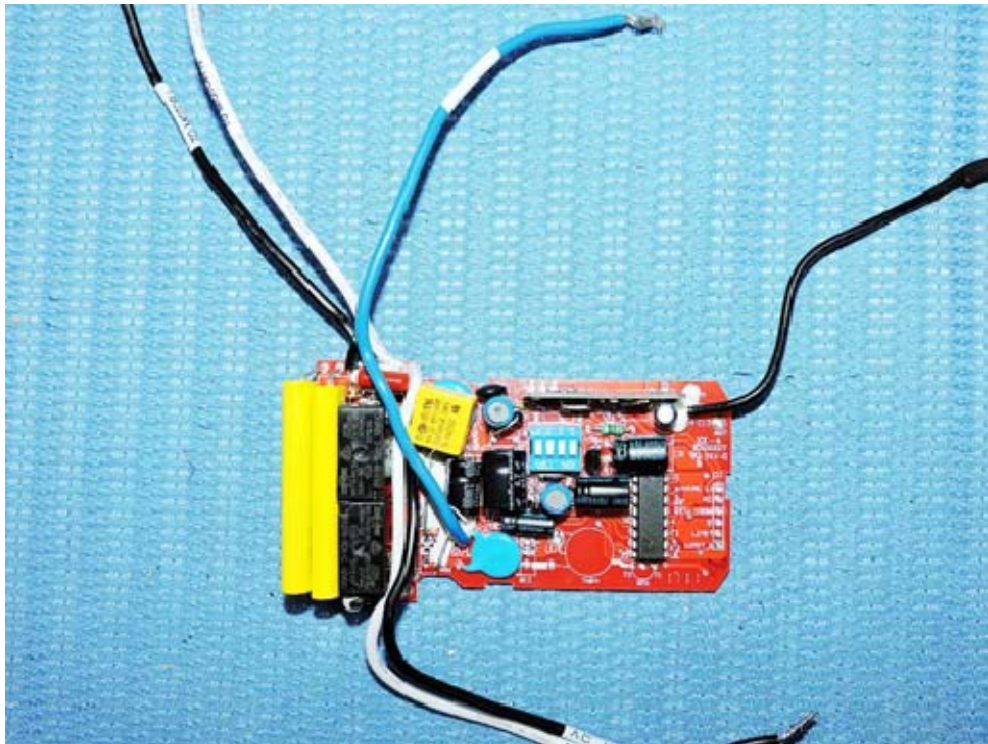


Photo for the EUT

