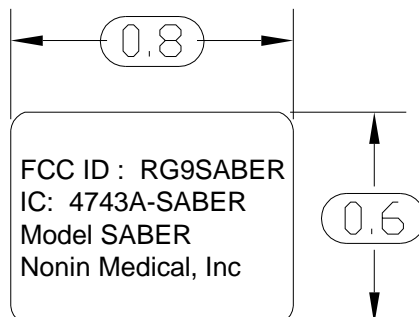
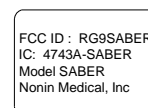


REVISION HISTORY				
REV	ECO	DESCRIPTION	DATE	ECO ORIGINATOR
01	-	FIRST DRAFT	04/17/08	RAR






SCALE: 2/1



SCALE: 1/1

NOTES:

- 1) MATERIAL: 3.4 MIL WHITE POLYOLEFIN
- 2) ADHESIVE: 3M 468MP
- 3) LABELS TO BE SUPPLIED ON ROLLS
- 4) TEXT COLOR: BLACK
- 5) GRAPHICS PER NONIN ARTWORK 6509-000-01
- 6)  INDICATES KEY INSPECTION DIMENSION.
- 7) FOR EACH SHIPMENT, VENDOR TO SUPPLY THE FOLLOWING:
CERTIFICATE OF CONFORMANCE TO THIS SPECIFICATION.
CERTIFICATE OF CONFORMANCE FOR MATERIALS USED.

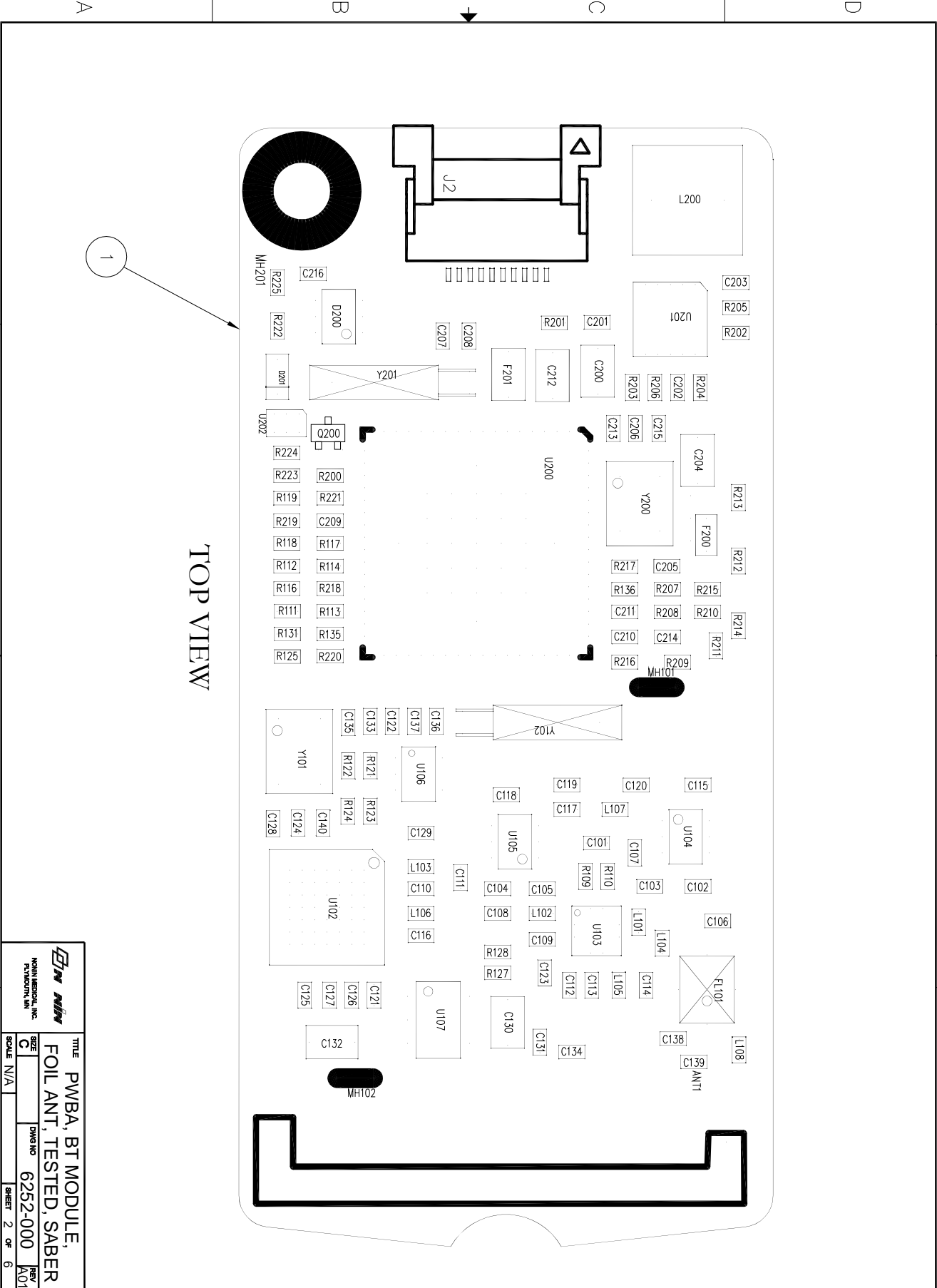
UNLESS OTHERWISE SPECIFIED DIMENSIONS ARE IN INCHES TOLERANCES ON: .X ± .030 .XX ± .010 .XXX ± .005 ANGLES ± 1°	DRAWN BY	DATE	 NONIN MEDICAL, INC. PLYMOUTH, MN CONFIDENTIAL <small>The information disclosed herein is confidential and is proprietary to Nonin Medical, Inc. Nonin reserves all patent, proprietary and reproduction rights therein. This information is not to be used or disclosed to any persons without the express written authorization of a representative of Nonin Medical, Inc.</small>		
	AJC	04/17/08			
	CHECKED BY	DATE	TITLE <h2 style="text-align: center;">LABEL, SABER</h2>		
	ELECTRONIC FILE NAME				
6509-000 REV 01.dwg					
THIRD ANGLE PROJECTION	DRAWING CONFORMS TO ANSI Y 14.5M-1994		SIZE A	DWG NO 6509-000	REV 01
	DO NOT SCALE DRAWING		SCALE 2/1	SHEET 1 OF 1	

REVISION HISTORY				
REV	ECO	DESCRIPTION	DATE	ECO ORIGINATOR
A	4958	INITIAL RELEASE	02/19/08	DJS
A01	—	ADD SABER LABEL & NOTE 10	04/17/08	RAR

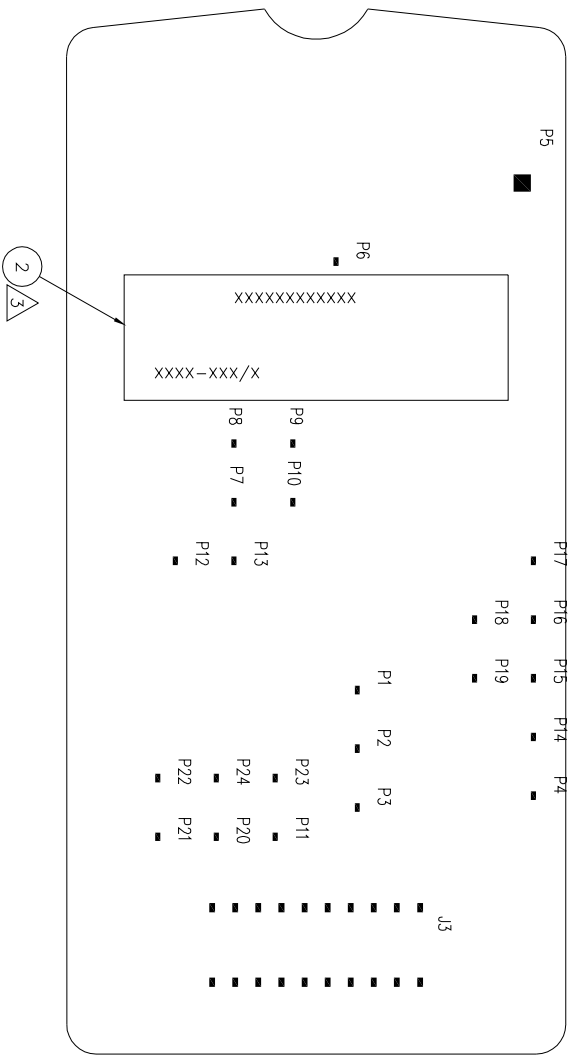
NOTES:

- 1) COMPONENTS C108, C119, C134, C139, C216, J3, R128, R210, R211, R212, R213, R214 AND R215 ARE NOT POPULATED.
- 2) ALL MATERIALS SHALL BE RoHS COMPLIANT.
- 3) PWBA SHALL BE PERMANENTLY MARKED (APPROXIMATELY WHERE SHOWN) WITH A NON-CONDUCTIVE INK AND OR MEDIA WITH ID ② CONTAINING BT ADDRESS, NONIN PART NUMBER AND REVISION.
- 4) MANUFACTURE TO CURRENT REVISION OF IPC A610 CLASS II STANDARD.
- 5) PWBA MUST MEET CLEANLINESS REQUIREMENTS FOR CURRENT REVISION OF J-STD-001 FOR C-20.
- 6) FOR EACH SHIPMENT, VENDOR TO SUPPLY A CERTIFICATE OF CONFORMANCE TO THIS SPECIFICATION. THE C OF C MUST CONTAIN, AT MINIMUM, NONIN PART NUMBER AND REVISION.
- 7) INDIVIDUAL PWBA SHALL BE PACKAGED PER CURRENT REVISION OF EIA-541.
- 8) ALL PWBA's MUST PASS CURRENT REVISION OF NONIN TEST PROCEDURE PART NUMBER 6245-000.
- 9) LOT CONTROL:
 - A) SHIPMENTS MUST HAVE THE FOLLOWING INFORMATION CLEARLY MARKED ON THE OUTSIDE OF EACH CARTON AND/OR PACKING SLIP: (1) NONIN PART NUMBER, (2) MANUFACTURER'S LOT NUMBER, AND (3) LOT QUANTITIES.
 - B) SHIPMENTS CONTAINING PRODUCT MANUFACTURED UNDER MULTIPLE LOT NUMBERS MUST BE SEGREGATED AND LABELED WITH EACH RESPECTIVE MANUFACTURER'S LOT NUMBER.
- 10) PWBA SHALL BE PERMANENTLY MARKED (APPROXIMATELY WHERE SHOWN) WITH ITEM ③ AFTER PWBA PASSES THE TEST IN NOTE 8.

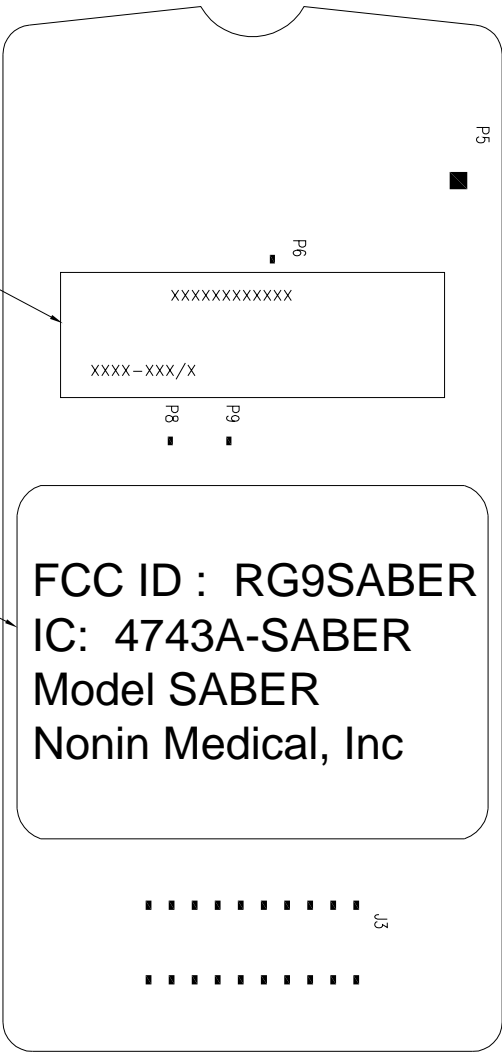
UNLESS OTHERWISE SPECIFIED DIMENSIONS ARE IN INCHES TOLERANCES ON: .X ± .030 .XX ± .010 .XXX ± .005 ANGLES ± 1°	DRAWN BY	DATE	NONIN MEDICAL, INC. PLYMOUTH, MN CONFIDENTIAL <small>The information disclosed herein is confidential and is proprietary to Nonin Medical, Inc. Nonin reserves all patent, proprietary and reproduction rights therein. This information is not to be used or disclosed to any persons without the express written authorization of a representative of Nonin Medical, Inc.</small>	
	AJC	04/17/08		
	CHECKED BY	DATE	TITLE PWBA, BT MODULE, FOIL ANT, TESTED, SABER	
	ELECTRONIC FILE NAME			
THIRD ANGLE PROJECTION 	6252-000 REV A01		SIZE A DWG NO 6252-000 REV A01	
	DRAWING CONFORMS TO ANSI Y 14.5M-1994			
	DO NOT SCALE DRAWING		SCALE N/A	SHEET 1 OF 6




		TITLE PWBA, BT MODULE, FOIL ANT, TESTED, SABER	
SIZE C	DWG NO 6252-000	REV A01	SHEET 2 OF 6
SCALE N/A			

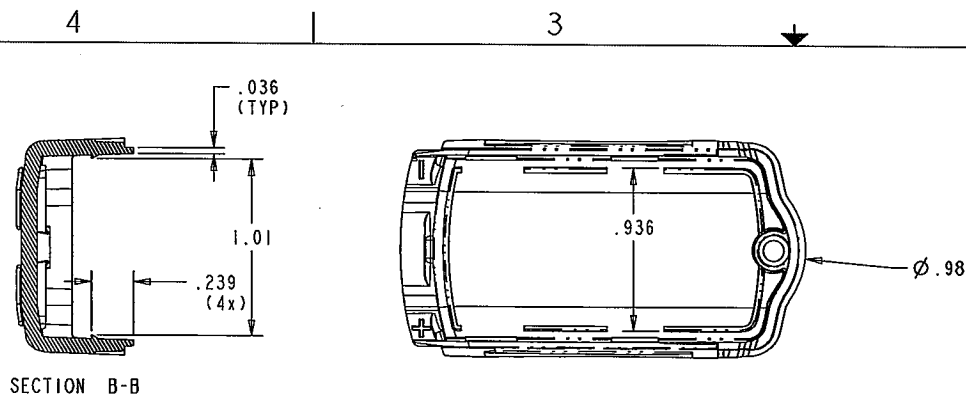


BOTTOM VIEW

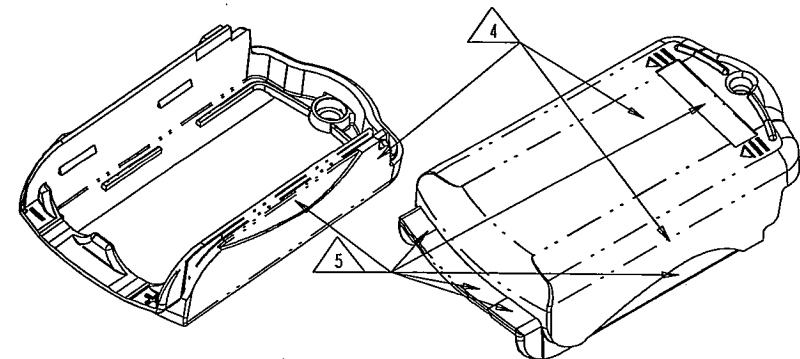
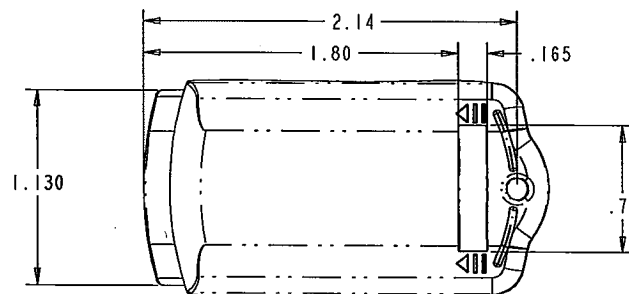
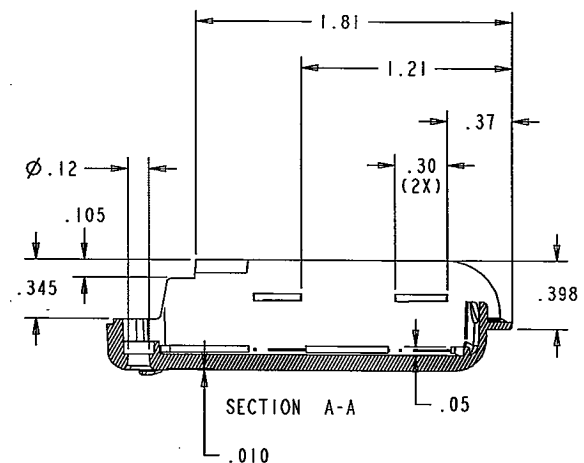
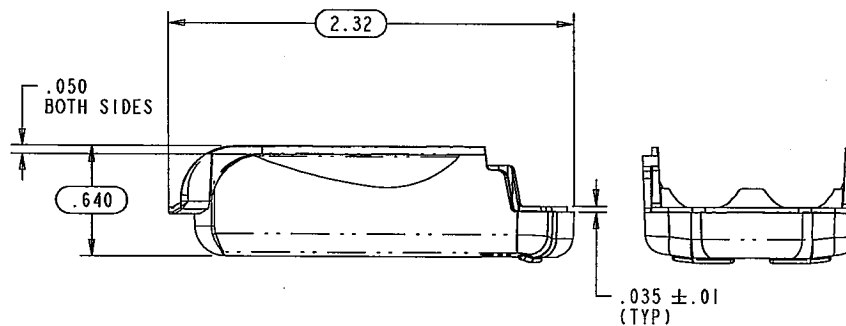
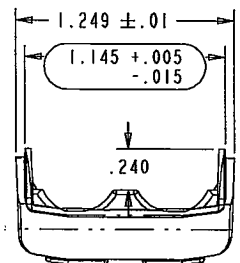


BOTTOM VIEW
SHOWING SABER LABEL PLACEMENT

		TITLE PWBA, BT MODULE, FOIL ANT, TESTED, SABER	
NONIN MEDICAL, INC. PAIN MANAGEMENT, INC.	SIZE C	DWG NO 6252-000	REV A01
SCALE N/A	SHEET 3 OF 6		



REVISION HISTORY				
REV	ECO	DESCRIPTION	DATE	ECO ORIGINATOR
A	4979	INITIAL RELEASE	02/22/08	DRW



- NOTES:
- 1) GEOMETRY AND DIMENSIONS PER PRO/E FILES 6037-MST.PRT, 6087-000.PRT
 - 2) MATERIAL: SABIC FXC810FE-BL1A223M
 - 3) COLOR: BLACK FERRITE

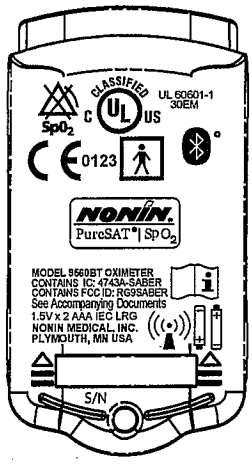
4 SURFACE FINISH: MT 1055-2 AS NOTED

5 SURFACE FINISH: SPI B-2 AS NOTED

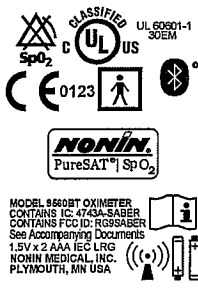
- 6) FLASH: .01 MAX
- 7) ALL KNOCKOUT MARKS TO BE FLUSH TO +.010 AND POSITION APPROVED BY NONIN.
- 8) NOMINAL WALL THICKNESS .09
- 9) PARTS TO BE FREE OF FOREIGN MATTER, MOLD RELEASE, OILS OR CONTAMINANTS.
- 10) MATERIAL CERTIFICATION REQUIRED WITH EACH SHIPMENT.
- 11) INDICATES KEY INSPECTION DIMENSIONS
- 12) PAGE 2 ARTWORK PER ELECTRONIC FILES 6087-001-04 ai.

UNLESS OTHERWISE SPECIFIED		DRAWN BY	DATE	Batt Door, 9560BT	
DIMENSIONS ARE IN INCHES		AJC	02/25/08	ENCLOSURE, BATT DOOR, 9560BT	
TOLERANCES ON:		CHECKED BY	DATE	REV A	
.1 ± 0.1		TVA	2/27/08	SIZE C	
.1X ± 0.01		ELECTRONIC FILE NAME		DWG NO 6087-XXX	
.2X ± 0.007		6087-000.PRT		SHEET 1 OF 2	
ANGLES ± 1.0		DRAWING CONFORMS TO		SCALE N/A	
THIRD ANGLE PROJECTION		ANSI Y 14.5M-1994		DO NOT SCALE DRAWING	

6087-001-04



VIEW FOR POSITIONING ARTWORK




S/N

SCALE 1/1

PAD PRINT NOTES:

- 1, ARTWORK COLOR: WHITE
- 2. PAD PRINTNG OVER THE WHITE PAD PRINTING WITH A CLEAR MATTE FINISH
HARD COATING

 NONIN MEDICAL, INC. PLYMOUTH, MN	TITLE ENCLOSURE, BATT DOOR, 9560BT		
	SIZE A	DWG NO 6087-XXX	REV A
	SCALE 1/1		SHEET 2 OF 2