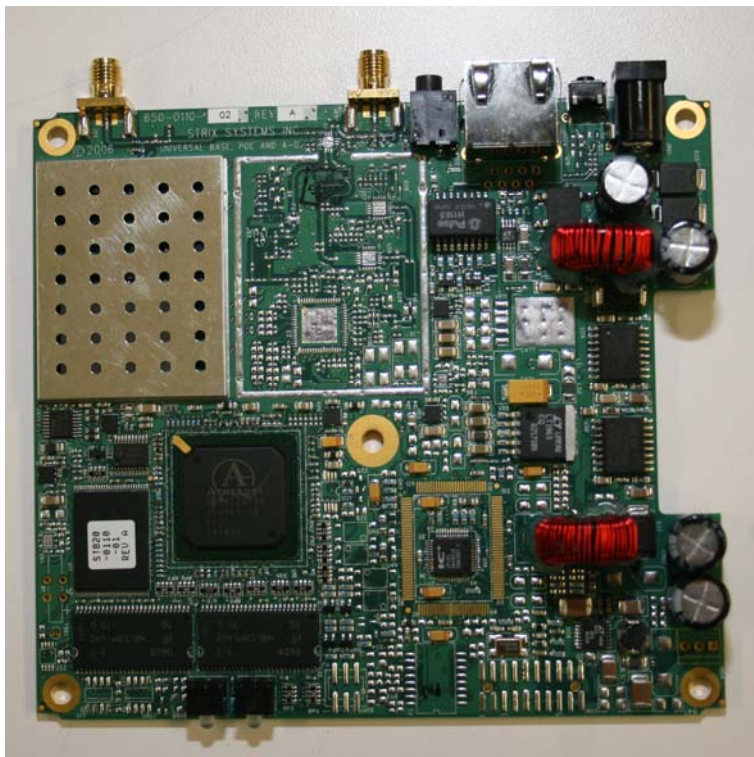
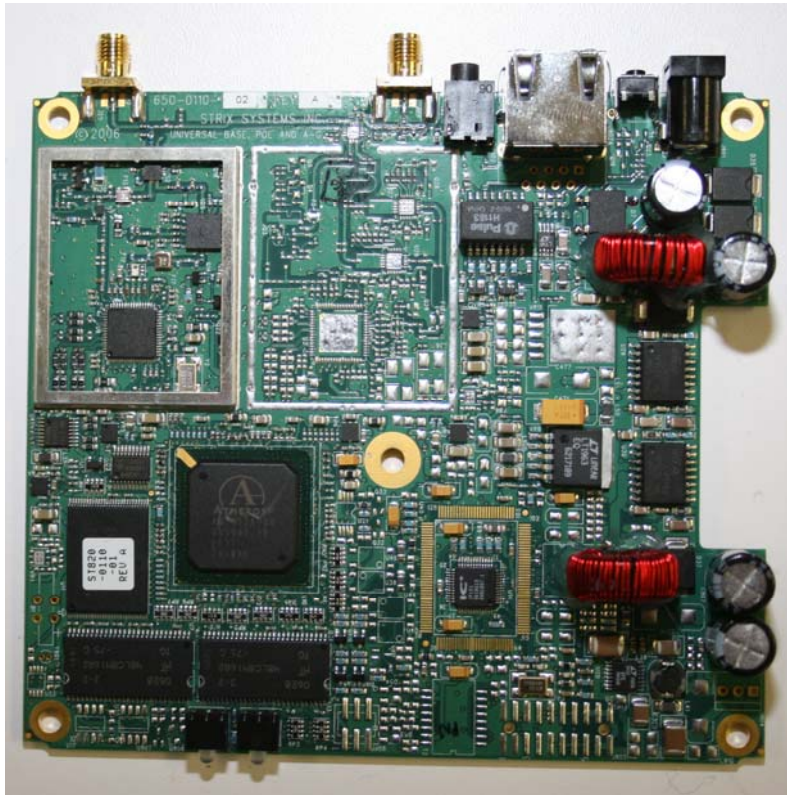


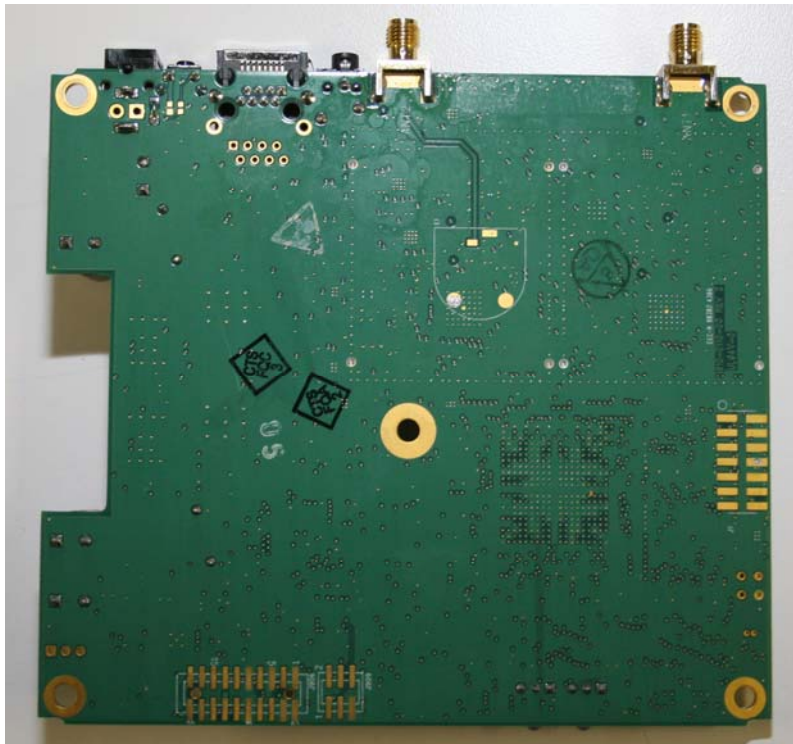
EWS150GNA Top Removed



EWS150GNA PCB (Top)




EWS150GNA PCB (Top - with shield removed)



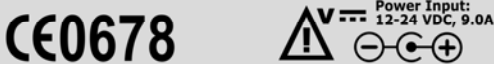
EWS150GNA PCB (Bottom)

Access/One™ Network EWS150G-NA
Strix Systems, Inc.



FC This device complies with Part 15 of the FCC Rules. Operation is subject to the following two conditions: 1. This device may not cause harmful interference. 2. This device must accept any interference received, including interference that may cause undesired operation.

FCC ID: RFM-EWS150GNA



CE0678 Power Input: 12-24 VDC, 9.0A

EWS150GNA Label