
	Model	UVB-Nx2x	Title	UVB-Nx2x Spec. & Quick Manual
	Version	0.3		

UVB-Nx2x

Spec. & Quick Manual

	Model	UVB-Nx2x	Title	UVB-Nx2x Spec. & Quick Manual
	Version	0.3		

History

Revision	Date	Author	Description
0.1	2007-05-08	HAES	
0.2	2007-05-15	HAES	Spec Added.
0.3	2007-08-30	EKPARK	Spec Revision.



	Model	UVB-Nx2x	Title	UVB-Nx2x Spec. & Quick Manual
	Version	0.3		

Table of Contents

1. Product Overview	4
1.1. Model specification	4
1.2. Functional Features.....	5
1.3. Product's combination of 3-Components.	6
1.3.1. Dongle component.....	6
1.3.2. UBManager component	6
1.3.3. Dialer component.....	7
2. Quick Start Manual	8
2.1. PC PLUG-IN	9
2.2. MRU SELECT	9
2.3. SEARCH.....	9
2.4. CONNECT	11
2.5. ENJOY	14
2.6. DISCONNECT.....	14
2.7. Setting.....	15
2.8. PC PLUG-OUT	16

	Model	UVB-Nx2x	Title	UVB-Nx2x Spec. & Quick Manual
	Version	0.3		

1. Product Overview


1.1. Model specification

Model Name	Ear jack	Bluetooth	NAND Flash	USB
UVB-N52S	X	2.0	512MB	2.0
UVB-N52D	O	2.0	512MB	2.0
UVB-N62S	X	2.0	1024MB	2.0
UVB-N62D	O	2.0	1024MB	2.0
UVB-N72S	X	2.0	2048MB	2.0
UVB-N72D	O	2.0	2048MB	2.0
UVB-N82S	X	2.0	4096MB	2.0
UVB-N82D	O	2.0	4096MB	2.0




① USB H/W Spec.

PC Interface	USB 2.0 Plug and play (Easy installation)
Power Consumption	< 1000 mW
Voltage	5.0 V \pm 10 % VDC (USB Bus POWERD)
Operating Temp	-10 $^{\circ}$ C ~ 60 $^{\circ}$ C

	Model	UVB-Nx2x	Title	UVB-Nx2x Spec. & Quick Manual
	Version	0.3		

Functional Features

- ② Plug and Play: No need Driver and Installation
- ③ Bluetooth USB Dongle
 - Chipset : CSR Bluecore 4-ROM (Bluetooth 2.0)
 - Class II : range 10[meter]
 - Frequency : 2.2 ~ 2.4835 GHZ ISM Band
 - Bluetooth Stack : A2DP, HFP, HSP, AVRCP supported, (Bluetooth 2.0)
- ④ USB 2.0, NAND Flash Memory : can be used as a flash storage
- ⑤ VoIP : Skype Software Autorun support
- ⑥ Wired Ear-jack(Stereo) interface for Skype (UBV-Nx2D only)
- ⑦ Mono & Stereo Switching (High Quality Bluetooth headset only)
 - VoIP Call : Mono sound
 - Music Play : Stereo sound
- ⑧ Windows XP(preferred), 2000, Vista(later) supported

	Model	UVB-Nx2x	Title	UVB-Nx2x Spec. & Quick Manual
	Version	0.3		

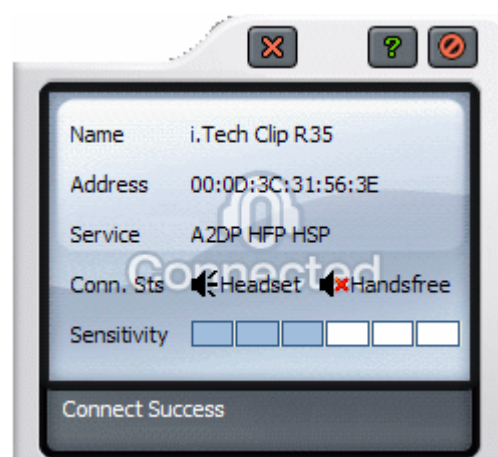
1.2. Product's combination of 3-Components.


1.2.1. Dongle component

- ① Definition
 - Hardware component with USB 2.0 interface.
- ② Function
 - Removable Disk
 - Bluetooth 1.2
 - ◆ Audio source for A2DP profile supported
 - ◆ Audio gateway for HFP & HSP profile supported
 - ◆ AVRCP profile supported.
 - Wired Stereo Ear-jack interface(UVB-N52D only)

1.2.2. UBManager component

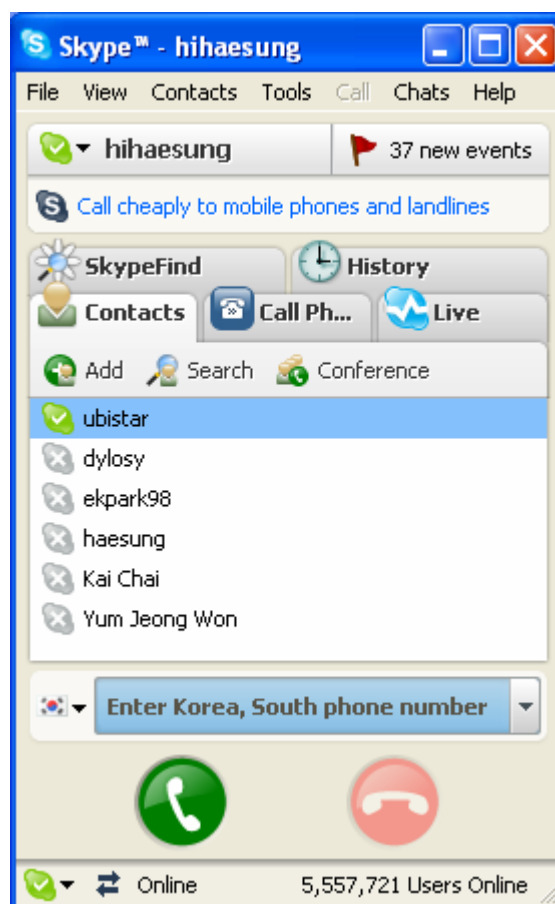
- ① Definition
 - Software component for windows
 - When plug-in PC, it will be automatically executed
 - When plug-out PC, it will be automatically terminated
- ② Function
 - It will control the Interface between UBDongle and Skype
 - It will provide the Bluetooth-related functions such as searching, connecting, and disconnecting of Bluetooth Headset.




	Model	UVB-Nx2x	Title	UVB-Nx2x Spec. & Quick Manual
	Version	0.3		

1.2.3. Dialer component

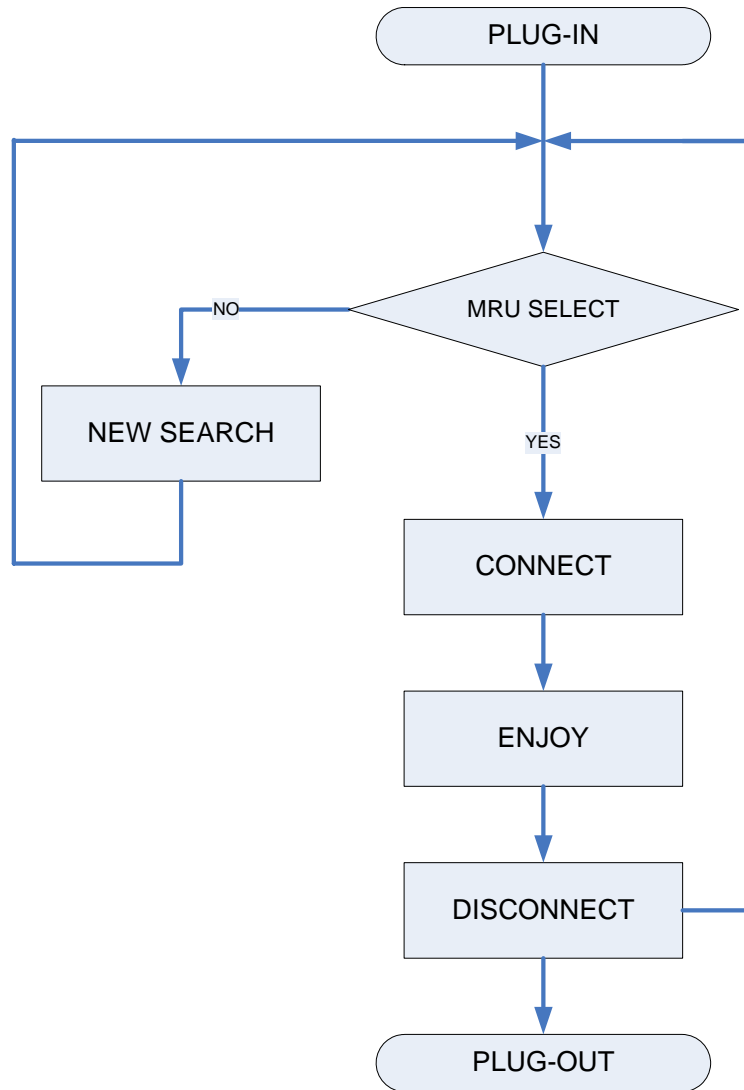
- ① Definition
 - Software component for PC
 - Skype is used for Dialer
 - It will be automatically executed
 - When plug-out PC, it will be automatically terminated
- ② Function
 - It will provide VoIP function.




	Model	UVB-Nx2x	Title	UVB-Nx2x Spec. & Quick Manual
	Version	0.3		

2. Quick Start Manual

Operation flow diagram is below.



	Model	UVB-Nx2x	Title	UVB-Nx2x Spec. & Quick Manual
	Version	0.3		

2.1. PC PLUG-IN

- ① Plug UBDongle in PC via USB
- ② UBManager will be executed automatically
- ③ UBManager executes Skype Dialer when connecting Bluetooth headset
- ④ UBManager supports a tray menu




2.2. MRU SELECT

- ① **MRU** means the abbreviation of "**Most Recently Used**"
- ② Icon list means Bluetooth headsets which have been used previously.
- ③ User will choice whether try to connect new device or not.
 - ◆ New device connection goes to "**Search**"
 - ◆ Previously used device connection goes to "**Connect**"



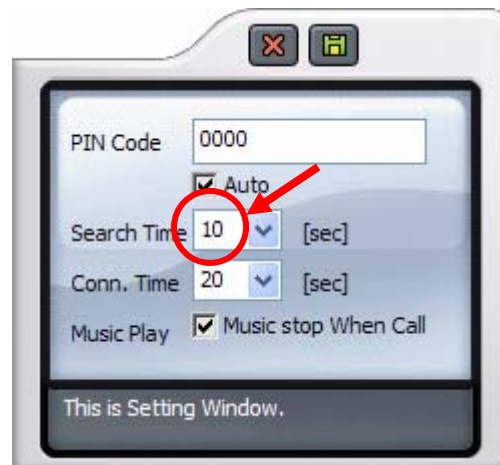
2.3. SEARCH

- ① Bluetooth headset must be in paring mode for this procedure.
- ② Click "**Search**" button.

	Model	UVB-Nx2x	Title	UVB-Nx2x Spec. & Quick Manual
	Version	0.3		




- ③ User can set the max Search Time in **setting** menu. (default : 10 sec).



- ④ After searching new Bluetooth devices and then found device is added into the list

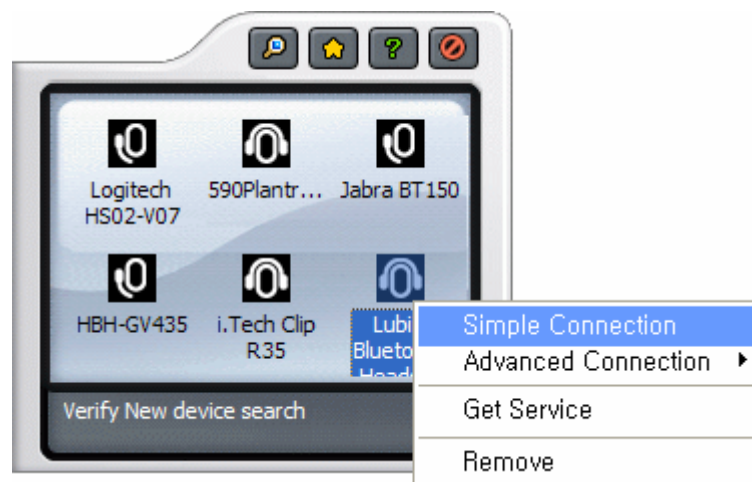


- ⑤ Go to "CONNECT"

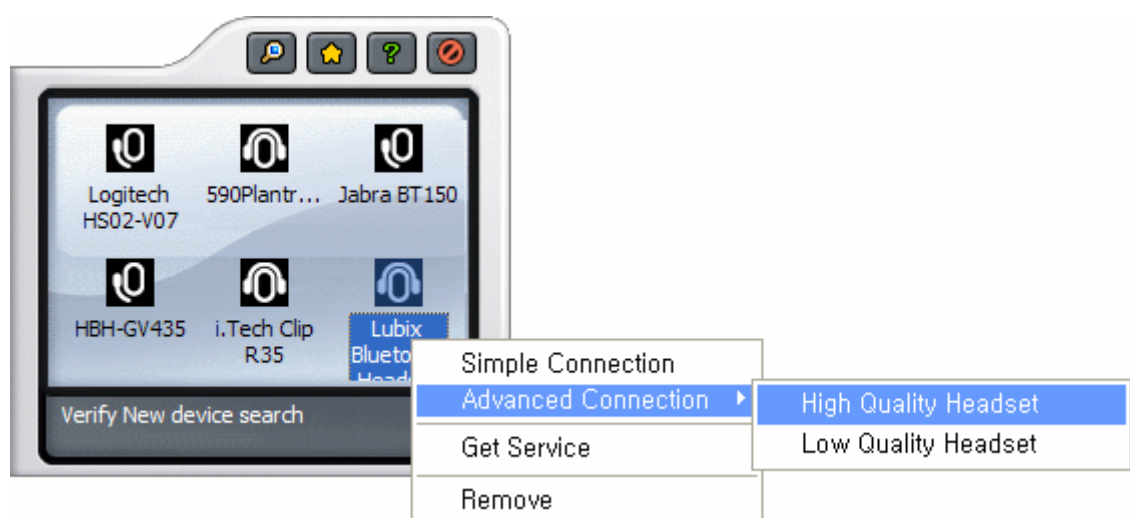
	Model	UVB-Nx2x	Title	UVB-Nx2x Spec. & Quick Manual
	Version	0.3		


2.4. CONNECT

- ① Usually, user selects icon and double click it with mouse.
Mouse double click method is recommended.
- ② The other methods are **"Simple Connection"** and **"Advanced Connection"**.
If user selects icon and clicks right mouse button, then user can choice **"Simple Connection"** or **"Advanced Connection"** in pop-up menu item.
 - **"Simple Connection"**: It will be connected with the profile priority (A2DP>HFP)

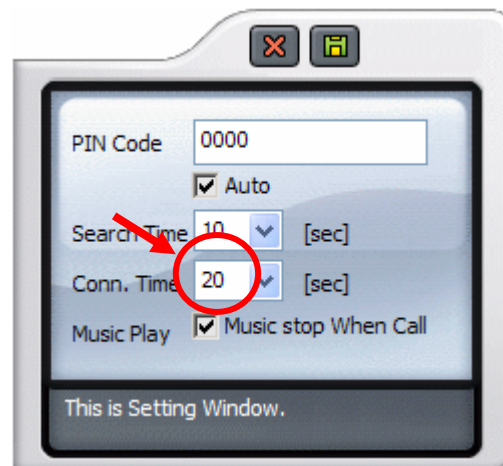


- **"Advanced Connection"**: It will be connected with user-choose profiles.

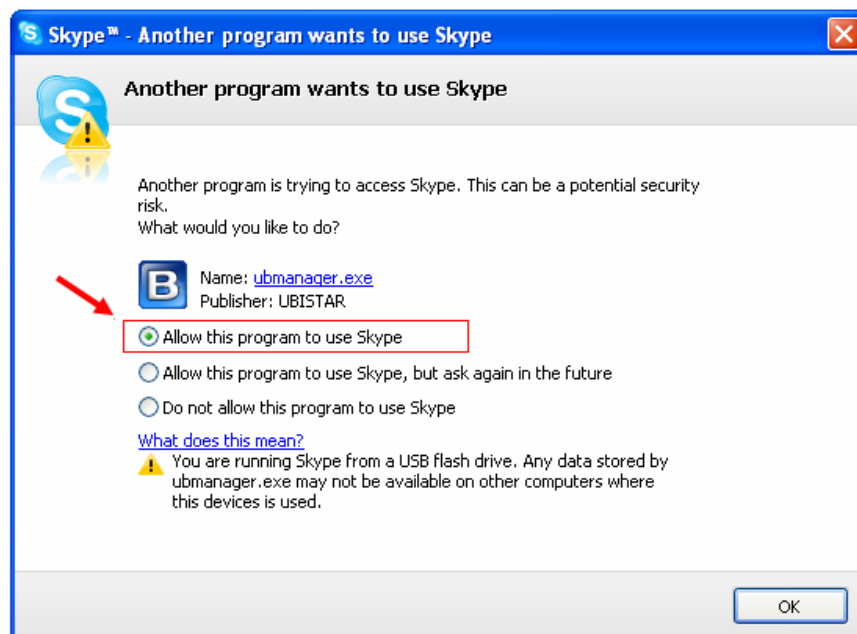



	Model	UVB-Nx2x	Title	UVB-Nx2x Spec. & Quick Manual
	Version	0.3		

- ③ “Get Service” is reserved.
- ④ If user select “Remove” in the pop up menu, then this icon will be removed from list.
- ⑤ User can set the max connecting time in preference menu. (default: 20 sec)

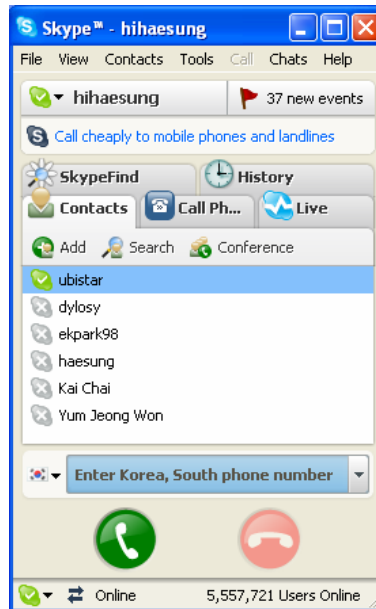


- ⑥ If below window is popped up, then select and click “OK” button like below picture please.



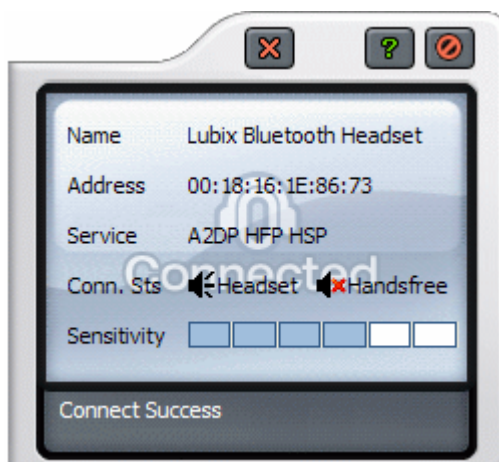
	Model	UVB-Nx2x	Title	UVB-Nx2x Spec. & Quick Manual
	Version	0.3		

- ⑦ Skype will be popped up like below picture.

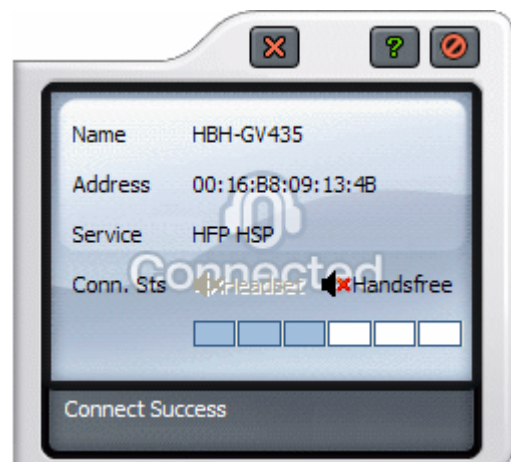


- ⑧ If connection is done correctly, UBManager displays information of connection.


- ◆ Device name
- ◆ Bluetooth headset address
- ◆ Supported service profile
- ◆ Connection status
- ◆ Sensitivity (RSSI : Received Signal Strength Indicator)



< Stereo Headset >



< Mono Handsfree >

	Model	UVB-Nx2x	Title	UVB-Nx2x Spec. & Quick Manual
	Version	0.3		

- ⑨ In mono handsfree headset, if mute mark exists then user can't hear music. To remove this mute mark, user can click this icon or click Bluetooth headset button. After clicking, user should wait about a few seconds until icon is changed.




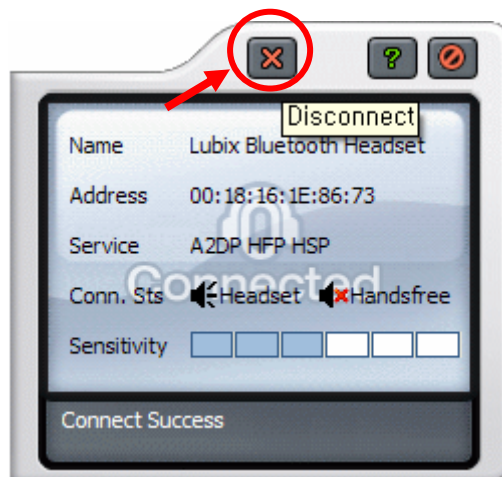
2.5. ENJOY

- ① After connection, user can enjoy music and use Skype VoIP services.

2.6. DISCONNECT

- ① When user want to use other device, the device that currently connected must be disconnected and then user can connect other device.
- ② Click "**Disconnect**" button


	Model	UVB-Nx2x	Title	UVB-Nx2x Spec. & Quick Manual
	Version	0.3		



2.7. Setting

- ① Click "Setting" button



	Model	UVB-Nx2x	Title	UVB-Nx2x Spec. & Quick Manual
	Version	0.3		


② UBManager support following settings.

- ◆ Pin Code
- ◆ Set On/Off to use default pin code
- ◆ Max discovering time
- ◆ Max connecting time
- ◆ Set On/Off to stop music while calling

③ User can save or cancel the preference

2.8. PC PLUG-OUT

① Plug UBDongle out of PC and then UBManager & Skype will be terminated automatically.

	Model	UVB-Nx2x	Title	UVB-Nx2x Spec. & Quick Manual
	Version	0.3		

Caution

Modifications not expressly approved by the party responsible for compliance could void the user's authority to operate the equipment.

FCC Compliance Information

This device complies with Part 15 of FCC Rules. Operation is subject to the following two conditions: (1) This device may not cause harmful interference, and (2) This device must accept any interference received. Including interference that may cause undesired operation.

Information to User

This equipment has been tested and found to comply with the limits for a Class B digital device, pursuant to part 15 of the FCC Rules. These limits are designed to provide reasonable protection against harmful interference in a residential installation. This equipment generates, uses and can radiate radio frequency energy and, if not installed and used in accordance with the instructions, may cause harmful interference to radio communications. However, there is no guarantee that interference will not occur in a particular installation. If this equipment does cause harmful interference to radio or television reception, which can be determined by turning the equipment off and on, the user is encouraged to try to correct the interference by one or more of the following measures:

- Reorient or relocate the receiving antenna.
- Increase the separation between the equipment and receiver.
- Connect the equipment into an outlet on a circuit different from that to which the receiver is connected.

Consult the dealer or an experienced radio/ tv technician for help.