

## #01\_WLAN2.4GHz\_802.11b 1Mbps\_Edge 4\_0mm\_Ch1

Communication System: 802.11b ; Frequency: 2412 MHz;Duty Cycle: 1:1

Medium: MSL\_2450\_171021 Medium parameters used:  $f = 2412$  MHz;  $\sigma = 1.962$  S/m;  $\epsilon_r = 54.933$ ;  $\rho = 1000$  kg/m<sup>3</sup>

Ambient Temperature : 23.3 °C ; Liquid Temperature : 22.3 °C

### DASY5 Configuration

- Probe: EX3DV4 - SN3931; ConvF(7.69, 7.69, 7.69); Calibrated: 2017/9/29;
- Sensor-Surface: 1.4mm (Mechanical Surface Detection)
- Electronics: DAE3 Sn577; Calibrated: 2017/9/25
- Phantom: ELI v5.0; Type: QDOVA002AA; Serial: TP:1227
- Measurement SW: DASY52, Version 52.8 (8); SEMCAD X Version 14.6.10 (7373)

**Area Scan (61x101x1):** Interpolated grid: dx=1.200 mm, dy=1.200 mm

Maximum value of SAR (interpolated) = 0.559 W/kg

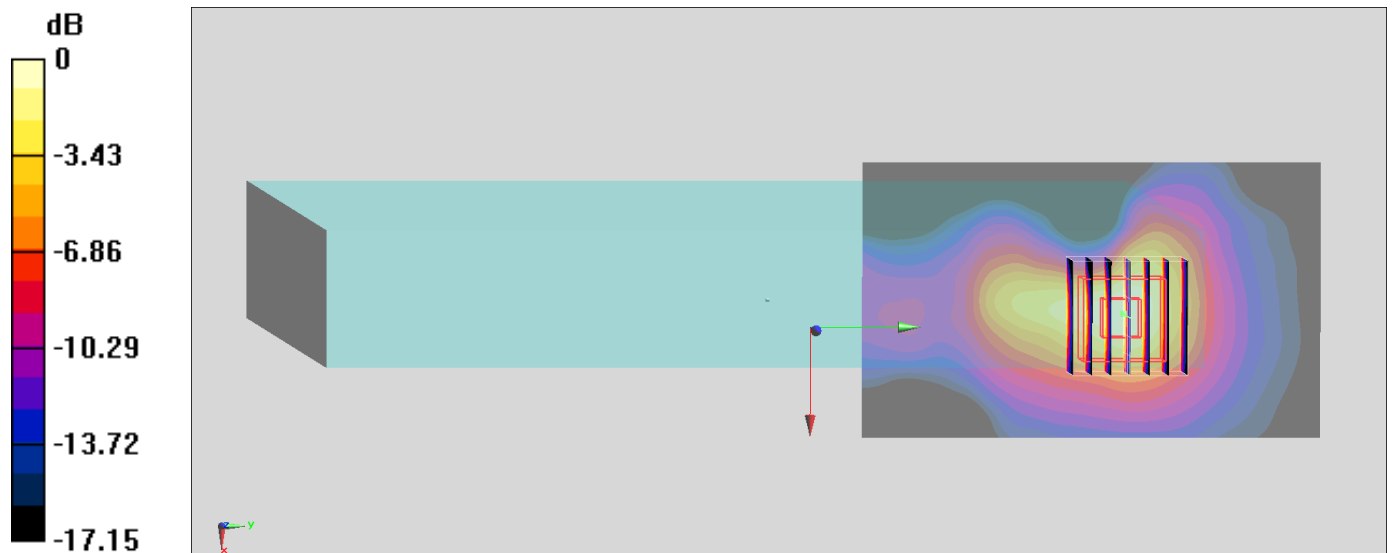
**Zoom Scan (7x7x7)/Cube 0:** Measurement grid: dx=5mm, dy=5mm, dz=5mm

Reference Value = 12.58 V/m; Power Drift = 0.14 dB

Peak SAR (extrapolated) = 0.655 W/kg

**SAR(1 g) = 0.334 W/kg; SAR(10 g) = 0.157 W/kg**

Maximum value of SAR (measured) = 0.532 W/kg



0 dB = 0.532 W/kg = -2.74 dBW/kg

## #02\_WLAN5GHz\_802.11a 6Mbps\_Edge 1\_0mm\_Ch48

Communication System: 802.11a; Frequency: 5240 MHz; Duty Cycle: 1:1

Medium: MSL\_5G\_171020 Medium parameters used:  $f = 5240$  MHz;  $\sigma = 5.149$  S/m;  $\epsilon_r = 46.921$ ;  $\rho = 1000$  kg/m<sup>3</sup>

Ambient Temperature : 23.7 °C ; Liquid Temperature : 22.7 °C

### DASY5 Configuration

- Probe: EX3DV4 - SN3801; ConvF(4.44, 4.44, 4.44); Calibrated: 2017/7/13;
- Sensor-Surface: 1.4mm (Mechanical Surface Detection)
- Electronics: DAE4 Sn916; Calibrated: 2016/12/15
- Phantom: ELI v4.0; Type: QDOVA001BB; Serial: 1026
- Measurement SW: DASY52, Version 52.8 (8); SEMCAD X Version 14.6.10 (7373)

**Area Scan (51x151x1):** Interpolated grid: dx=1.000 mm, dy=1.000 mm

Maximum value of SAR (interpolated) = 0.219 W/kg

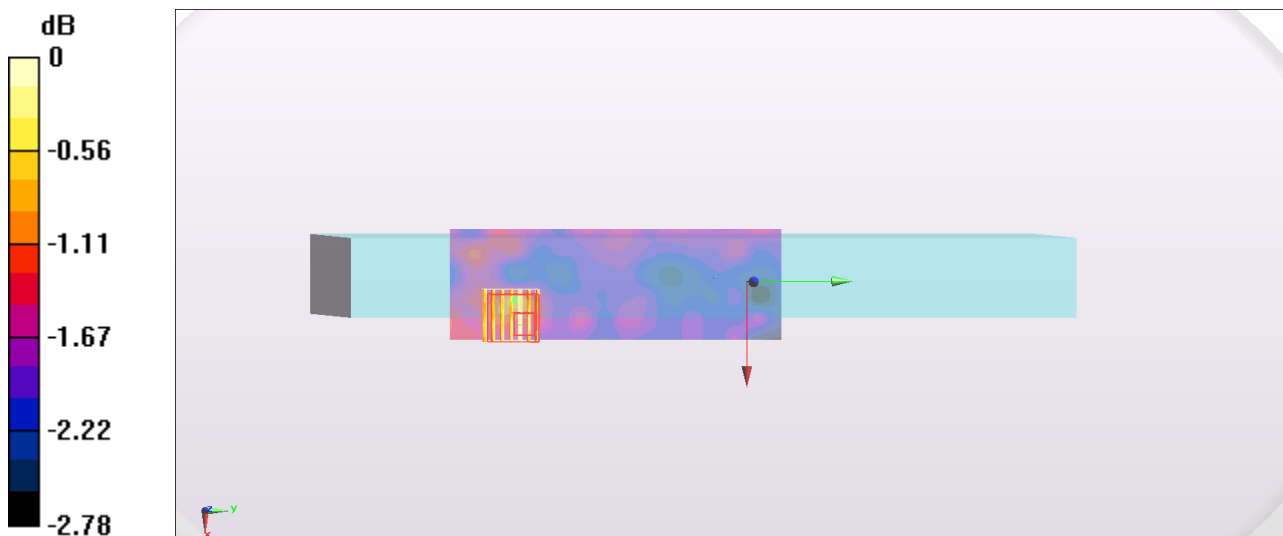
**Zoom Scan (7x7x7)/Cube 0:** Measurement grid: dx=4mm, dy=4mm, dz=1.4mm

Reference Value = 5.865 V/m; Power Drift = 0.17 dB

Peak SAR (extrapolated) = 0.260 W/kg

**SAR(1 g) = 0.242 W/kg; SAR(10 g) = 0.229 W/kg**

Maximum value of SAR (measured) = 0.260 W/kg



0 dB = 0.260 W/kg = -5.85 dBW/kg

### #03\_WLAN5GHz\_802.11a 6Mbps\_Edge 1\_0mm\_Ch100

Communication System: 802.11a ; Frequency: 5500 MHz;Duty Cycle: 1:1

Medium: MSL\_5G\_171020 Medium parameters used:  $f = 5500$  MHz;  $\sigma = 5.466$  S/m;  $\epsilon_r = 46.519$ ;  $\rho = 1000$  kg/m<sup>3</sup>

Ambient Temperature : 23.7 °C ; Liquid Temperature : 22.7 °C

#### DASY5 Configuration

- Probe: EX3DV4 - SN3801; ConvF(4.05, 4.05, 4.05); Calibrated: 2017/7/13;
- Sensor-Surface: 1.4mm (Mechanical Surface Detection)
- Electronics: DAE4 Sn916; Calibrated: 2016/12/15
- Phantom: ELI v4.0; Type: QDOVA001BB; Serial: 1026
- Measurement SW: DASY52, Version 52.8 (8); SEMCAD X Version 14.6.10 (7373)

**Area Scan (51x81x1):** Interpolated grid: dx=1.000 mm, dy=1.000 mm

Maximum value of SAR (interpolated) = 0.327 W/kg

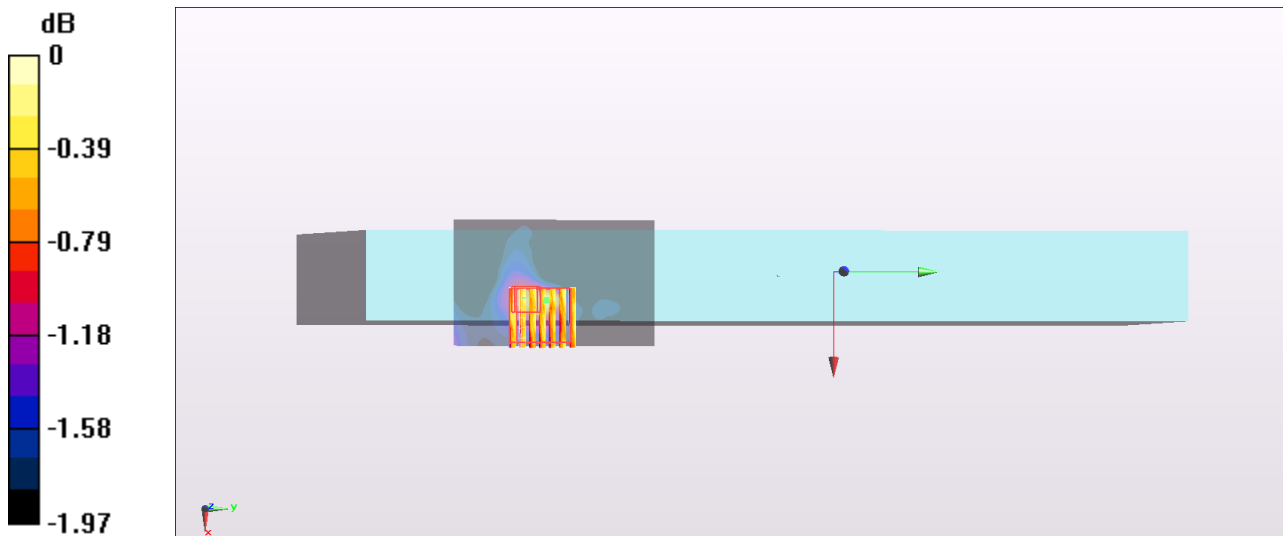
**Zoom Scan (7x7x7)/Cube 0:** Measurement grid: dx=4mm, dy=4mm, dz=1.4mm

Reference Value = 6.335 V/m; Power Drift = 0.17 dB

Peak SAR (extrapolated) = 0.336 W/kg

**SAR(1 g) = 0.311 W/kg; SAR(10 g) = 0.296 W/kg**

Maximum value of SAR (measured) = 0.334 W/kg



0 dB = 0.334 W/kg = -4.76 dBW/kg

## #04\_WLAN5GHz\_802.11a 6Mbps\_Edge 1\_0mm\_Ch165

Communication System: 802.11a ; Frequency: 5825 MHz;Duty Cycle: 1:1

Medium: MSL\_5G\_171020 Medium parameters used:  $f = 5825$  MHz;  $\sigma = 5.892$  S/m;  $\epsilon_r = 46.035$ ;  $\rho = 1000$  kg/m<sup>3</sup>

Ambient Temperature : 23.7 °C ; Liquid Temperature : 22.7 °C

### DASY5 Configuration

- Probe: EX3DV4 - SN3801; ConvF(3.96, 3.96, 3.96); Calibrated: 2017/7/13;
- Sensor-Surface: 1.4mm (Mechanical Surface Detection)
- Electronics: DAE4 Sn916; Calibrated: 2016/12/15
- Phantom: ELI v4.0; Type: QDOVA001BB; Serial: 1026
- Measurement SW: DASY52, Version 52.8 (8); SEMCAD X Version 14.6.10 (7373)

**Area Scan (51x61x1):** Interpolated grid: dx=1.000 mm, dy=1.000 mm

Maximum value of SAR (interpolated) = 0.339 W/kg

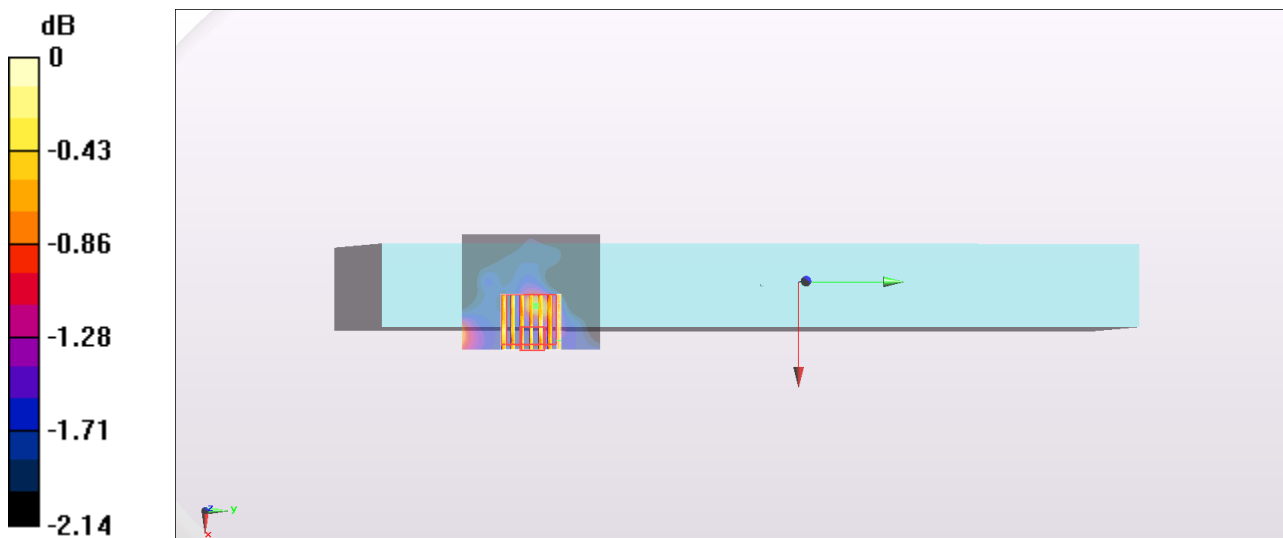
**Zoom Scan (7x7x7)/Cube 0:** Measurement grid: dx=4mm, dy=4mm, dz=1.4mm

Reference Value = 6.519 V/m; Power Drift = 0.13 dB

Peak SAR (extrapolated) = 0.375 W/kg

**SAR(1 g) = 0.348 W/kg; SAR(10 g) = 0.329 W/kg**

Maximum value of SAR (measured) = 0.375 W/kg



0 dB = 0.375 W/kg = -4.26 dBW/kg