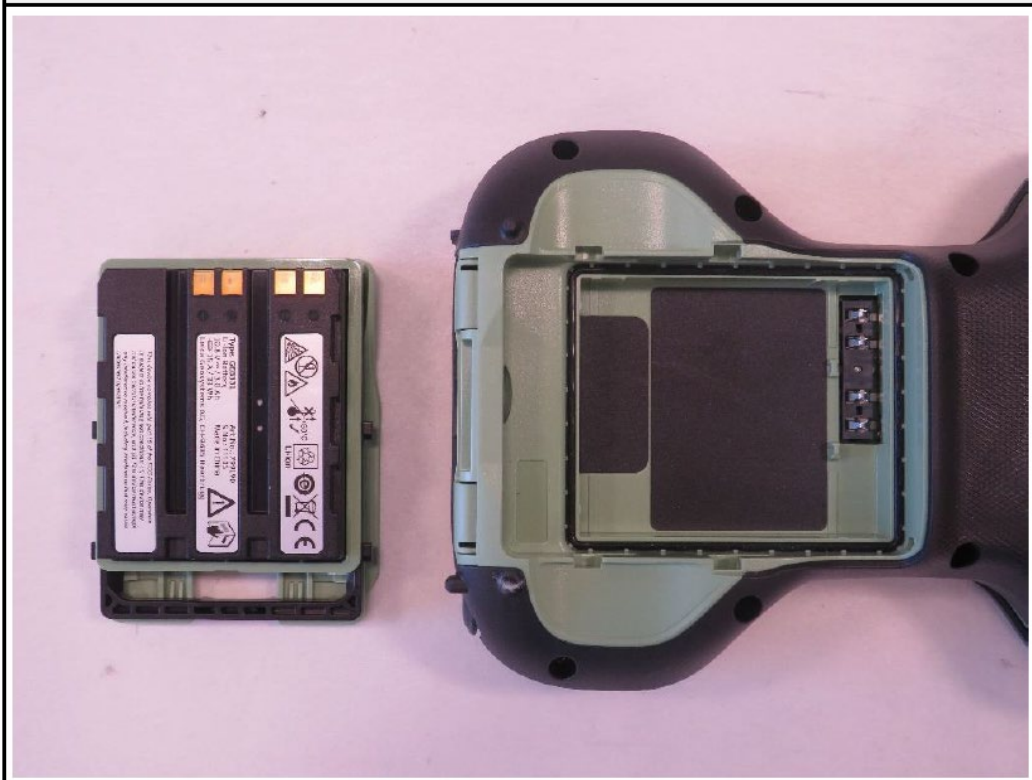
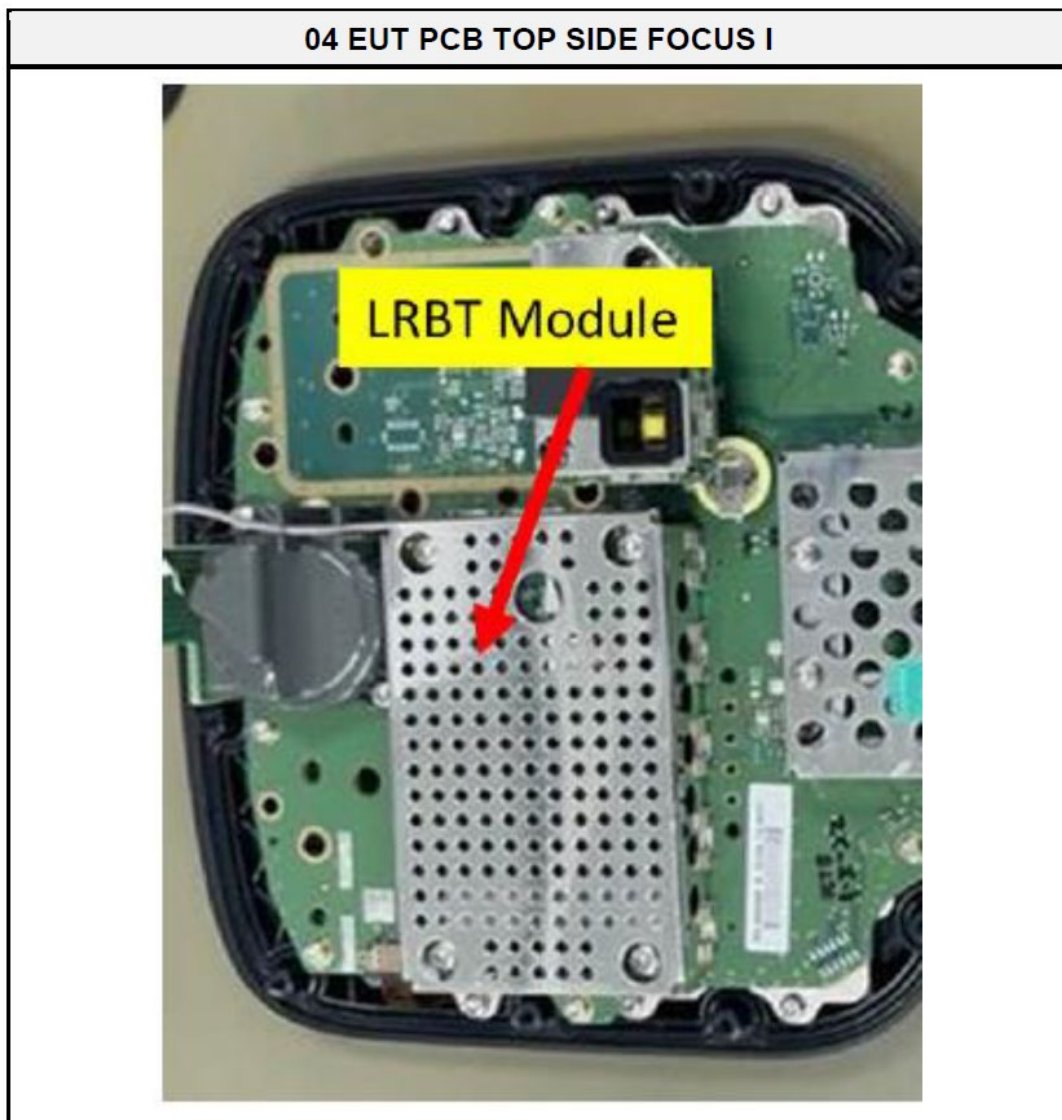
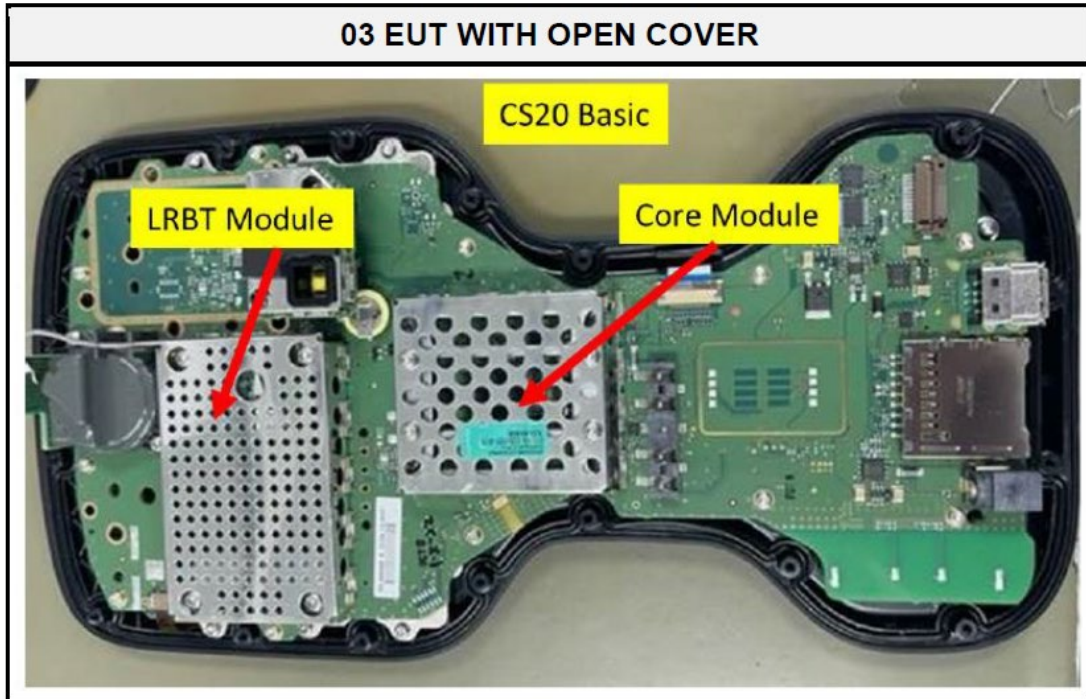


**01 EUT WITH OPEN CONNECTOR PORTS**

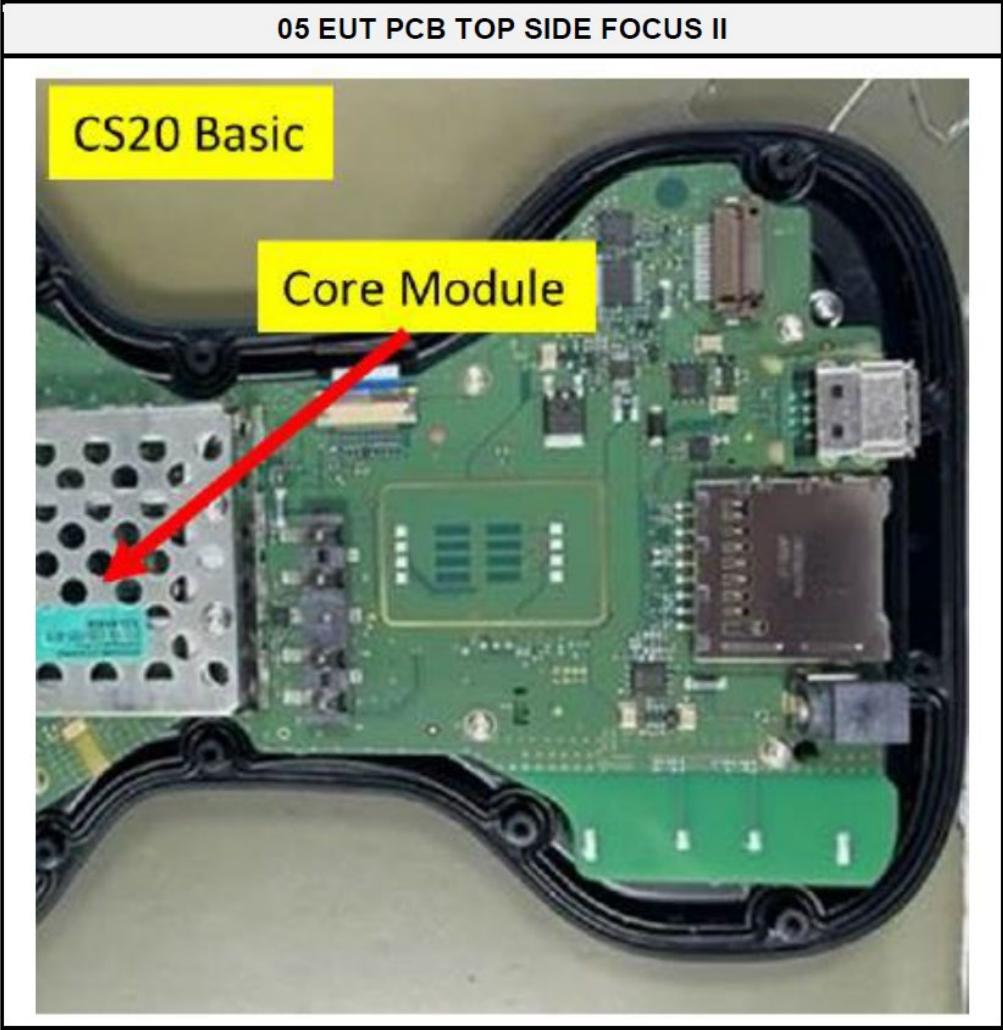


**02 EUT WITH OPEN BATTERY SLOT**









LRBT Module after casing removed



Core Module after casing removed

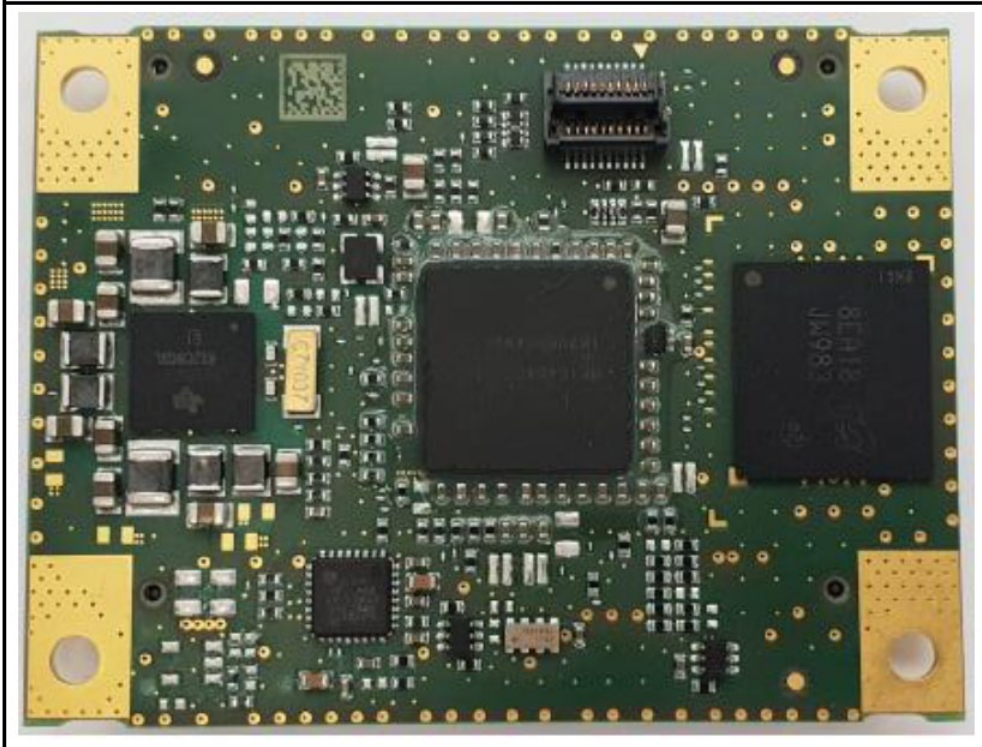


Core Module after casing removed

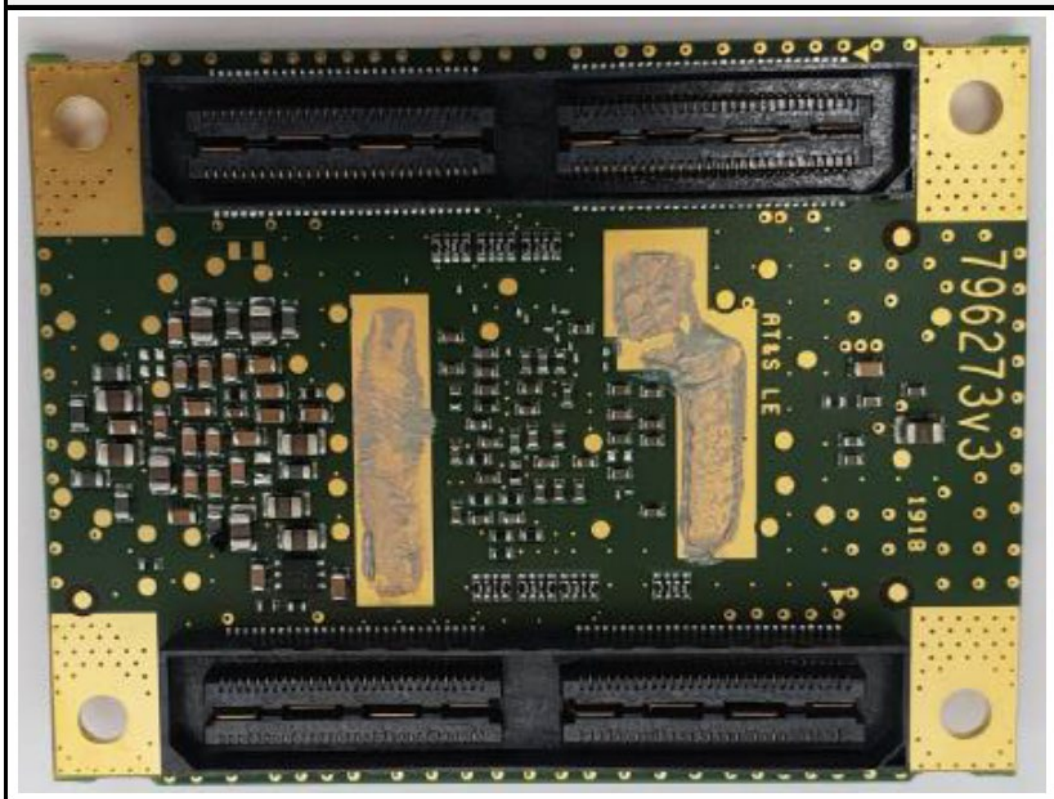


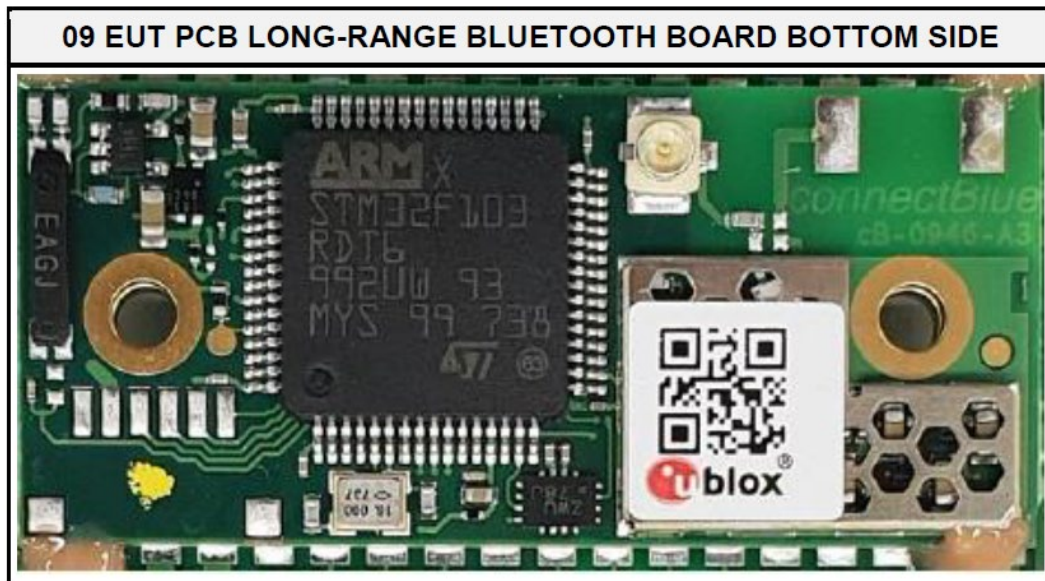
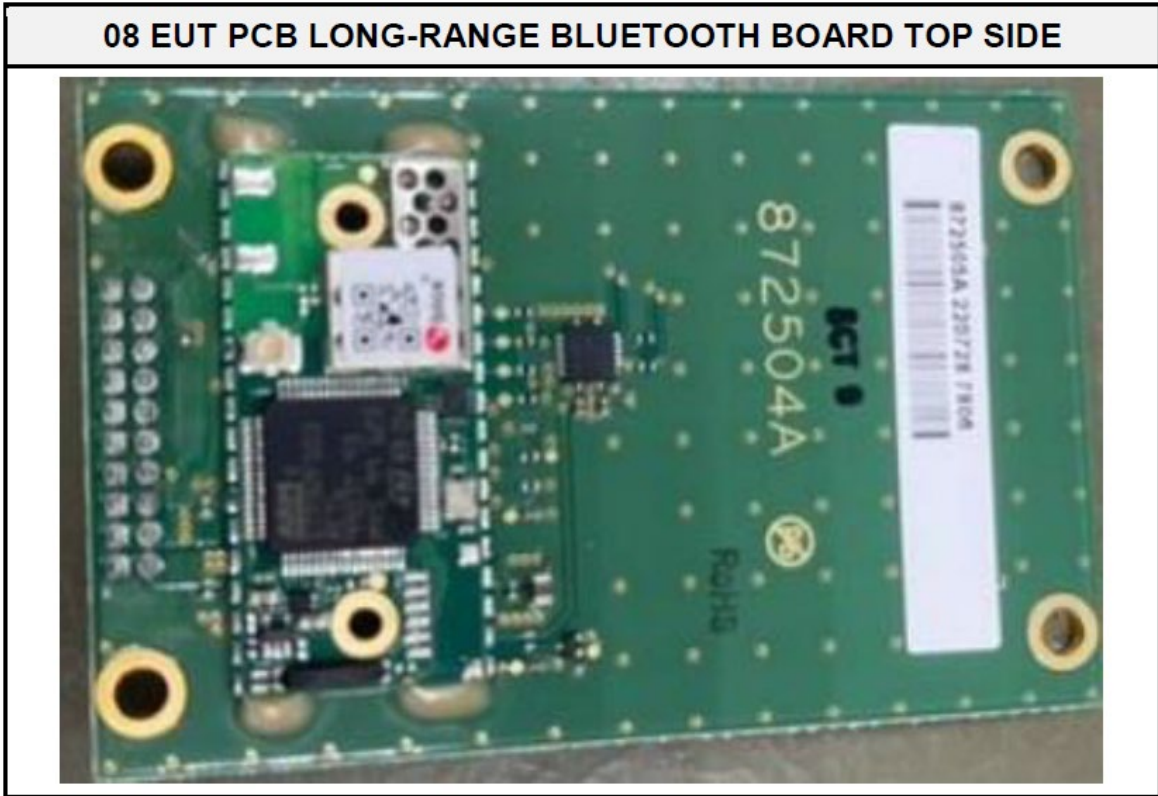


06 EUT PCB CORE MODULE BOARD TOP SIDE



07 EUT PCB CORE MODULE BOARD BOTTOM SIDE





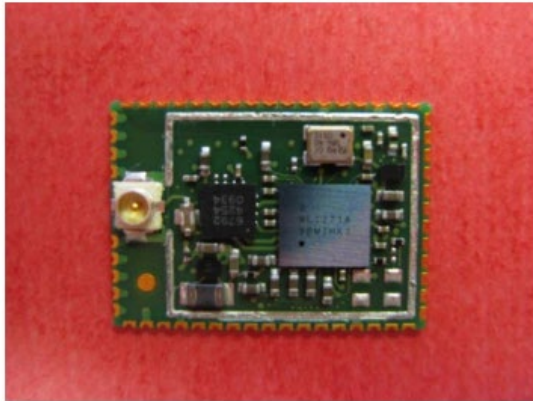
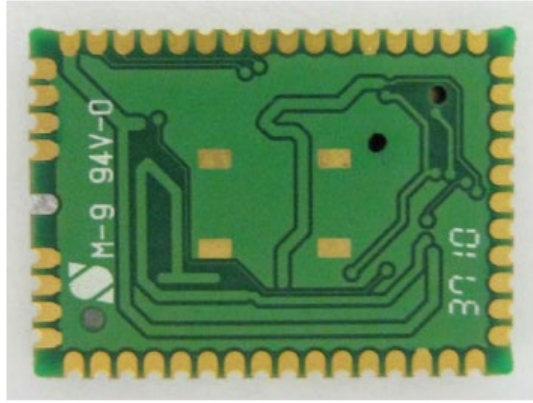
Test Report No.: G0M-2209-1656-TFC247BTLR-V02

Radio Module	Model	TIWI-BLE
	Manufacturer	Laird Technologies (LSR)
	HW Version	Unspecified
	SW Version	Unspecified
	FCC-ID	RFD-BTWCO
	IC	3177A-BTWCO

Internal photos module (BT Long Range + W-LAN):



FCC ID: RFD-CSNGP  
IC: 3177A-CSNGP  
CS20 Basic



(taken from module listing)

---

Test Report No.: G0M-2209-1656-TFC247BTBR-V02

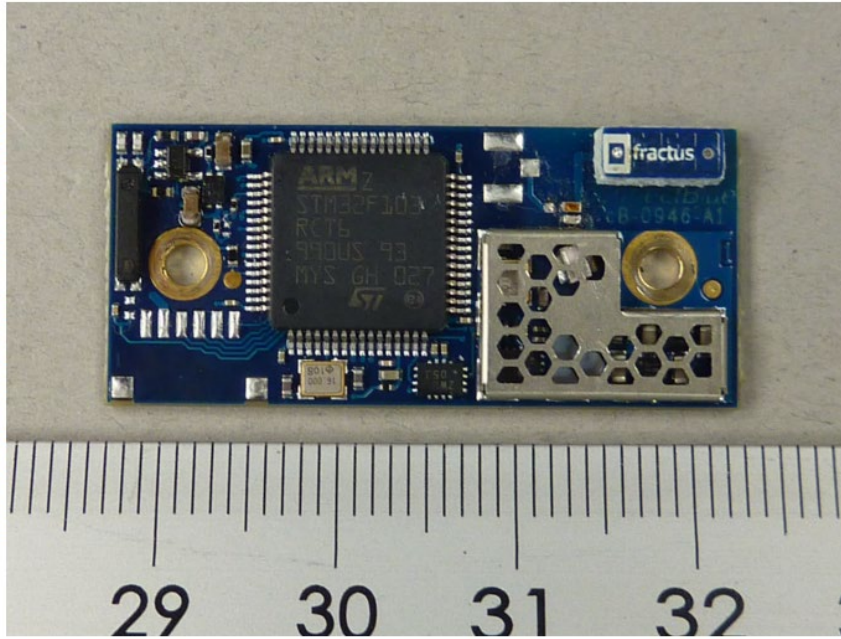
---

Radio Module	Type	Bluetooth BR-EDR module
	Model	cB-OBS421-c1
	Manufacturer	connectBlue/U-box
	HW Version	B
	SW Version	5.2.0
	FCC-ID	PVH0946
	IC	5235A-0946

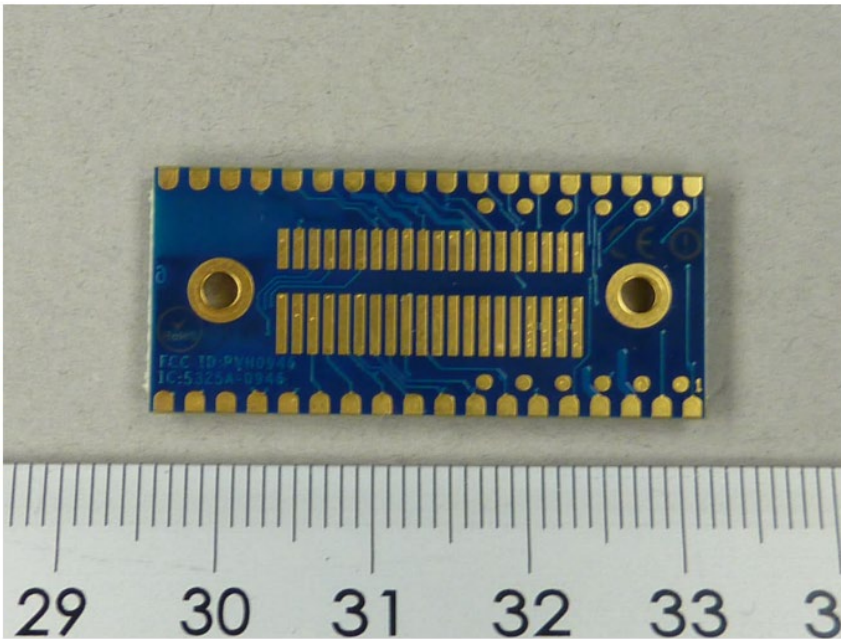
Internal photos BT BR module:

FCC ID: RFD-CSNGP  
IC: 3177A-CSNGP  
CS20 Basic

111592\_1.JPG: 08-0946 with internal antenna, PCB, top view



111592\_1.JPG: 08-0946, PCB, bottom view



taken from module listing

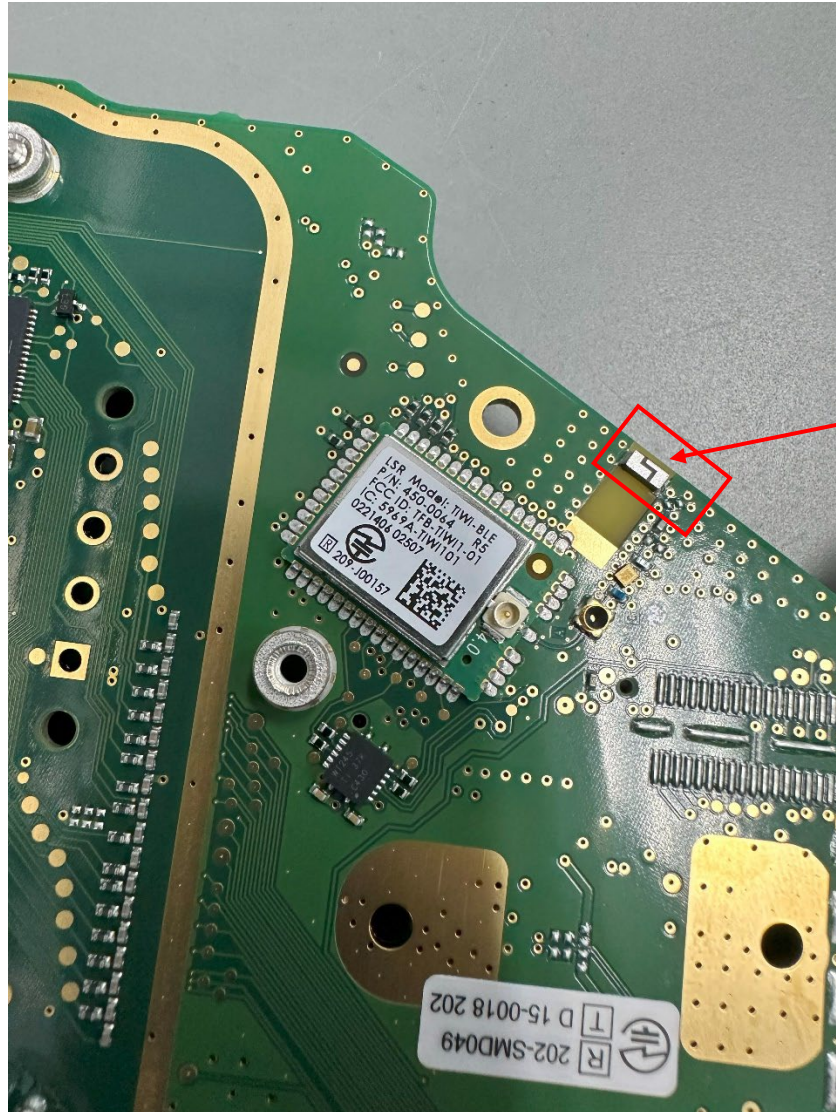


FCC ID: RFD-CSNGP  
IC: 3177A-CSNGP  
CS20 Basic



OBS421 module – Antenna (1000146 AVX)

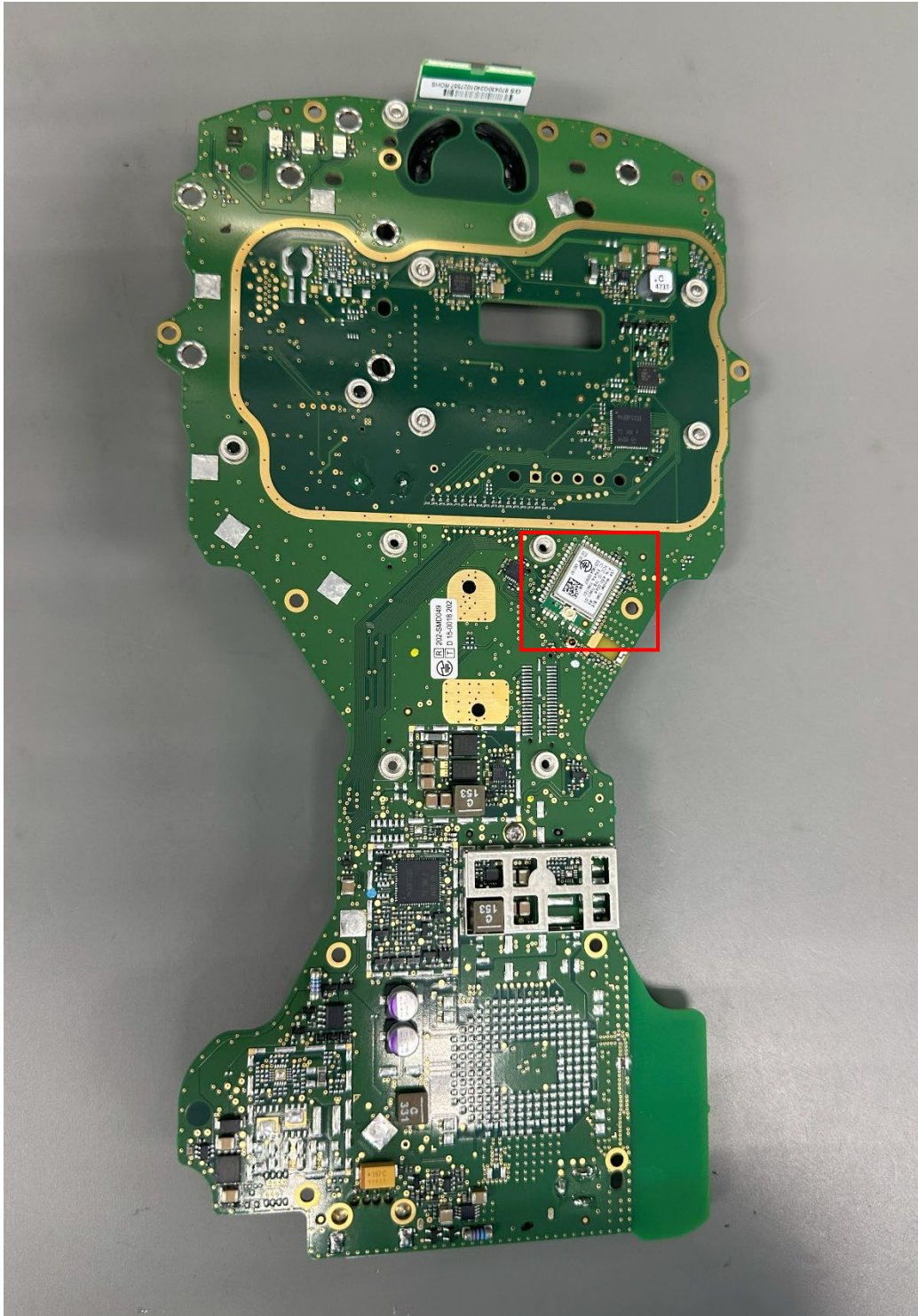
FCC ID: RFD-CSNGP  
IC: 3177A-CSNGP  
CS20 Basic



TIWI-BLE module – Antenna (W3008C)



FCC ID: RFD-CSNGP  
IC: 3177A-CSNGP  
CS20 Basic



TIWI-BLE module location

FCC ID: RFD-CSNGP  
IC: 3177A-CSNGP  
CS20 Basic



OBS421 module location