

TEST REPORT

Reference No..... : WTS15S1138081E
FCC ID : REY-MC3000
Applicant..... : SKYRC Technology Co.,Ltd
Address..... : 4/F, Building No. 6, MeiTai Industry Park, GuanGuang South Road,
Guihua, Guanlan, BaoAn District, Shenzhen, China
Manufacturer : The same as above
Address..... : The same as above
Product Name..... : Universal Battery Charger Analyzer
Model No..... : MC3000
Standards..... : FCC CFR47 Part 15 Section 15.247:2015
Date of Receipt sample : Nov.24, 2015
Date of Test : Nov.25, 2015 – Dec.26, 2015
Date of Issue..... : Dec.28 ,2015
Test Result..... : Pass

Remarks:

The results shown in this test report refer only to the sample(s) tested, this test report cannot be reproduced, except in full, without prior written permission of the company. The report would be invalid without specific stamp of test institute and the signatures of compiler and approver.

Prepared By:

Waltek Services (Shenzhen) Co., Ltd.

Address: 1/F., Fukangtai Building, West Baima Road, Songgang Street, Baoan District, Shenzhen,
Guangdong, China

Tel :+86-755-83551033

Fax:+86-755-83552400

Compiled by:



Lake Xie / Test Engineer

Approved by:



Philo Zhong / Manager

2 Test Summary

Test Items	Test Requirement	Result
Radiated Emissions	15.205(a) 15.209(a)	PASS
Conducted Emissions	15.207(a)	PASS
6dB Bandwidth	15.247(a)(2)	PASS
Maximum Peak Output Power	15.247(b)(3),(4)	PASS
Power Spectral Density	15.247(e)	PASS
Band Edge	15.247(d)	PASS
Antenna Requirement	15.203	PASS
Maximum Permissible Exposure (Exposure of Humans to RF Fields)	1.1307(b)(1)	PASS

3 Contents

	Page
1 COVER PAGE	1
2 TEST SUMMARY	2
3 CONTENTS	3
4 GENERAL INFORMATION	5
4.1 GENERAL DESCRIPTION OF E.U.T.	5
4.2 DETAILS OF E.U.T.	5
4.3 CHANNEL LIST	5
4.4 TEST MODE	5
4.5 TEST FACILITY	6
5 EQUIPMENT USED DURING TEST	7
5.1 EQUIPMENTS LIST	7
5.2 MEASUREMENT UNCERTAINTY	8
5.3 TEST EQUIPMENT CALIBRATION	8
6 CONDUCTED EMISSION	9
6.1 E.U.T. OPERATION	9
6.2 EUT SETUP	9
6.3 MEASUREMENT DESCRIPTION	9
6.4 CONDUCTED EMISSION TEST RESULT	10
7 RADIATED EMISSIONS	12
7.1 EUT OPERATION.....	12
7.2 TEST SETUP	13
7.3 SPECTRUM ANALYZER SETUP	14
7.4 TEST PROCEDURE	15
7.5 SUMMARY OF TEST RESULTS	16
8 BAND EDGE MEASUREMENT	19
8.1 TEST PROCEDURE.....	19
8.2 TEST RESULT	20
9 6 DB BANDWIDTH MEASUREMENT	21
9.1 TEST PROCEDURE	21
9.2 TEST RESULT	21
10 MAXIMUM PEAK OUTPUT POWER	23
10.1 TEST PROCEDURE.....	23
10.2 TEST RESULT	23
11 POWER SPECTRAL DENSITY	25
11.1 TEST PROCEDURE.....	25
11.2 TEST RESULT	25
12 ANTENNA REQUIREMENT	27
13 RF EXPOSURE	28
13.1 REQUIREMENTS.....	28
13.2 THE PROCEDURES / LIMIT	28
13.3 MPE CALCULATION METHOD	29
14 PHOTOGRAPHS –MODEL MC3000 TEST SETUP	30
14.1 RADIATED EMISSION	30
14.2 PHOTOGRAPH – CONDUCTED EMISSION TEST SETUP AT TEST SITE 1#	31
15 PHOTOGRAPHS - CONSTRUCTIONAL DETAILS	32

15.1	MODEL MC3000 - EXTERNAL PHOTOS	32
15.2	MODEL MC3000 - INTERNAL PHOTOS	37

4 General Information

4.1 General Description of E.U.T.

Product Name:	:Universal Battery Charger Analyzer
Model No.:	:MC3000
Model Difference:	:N/A
Operation Frequency:	:2402MHz ~ 2480MHz, 40 channels in total
The lowest oscillator:	:32.768kHz
Type of modulation:	:GFSK(BLE only)

4.2 Details of E.U.T.

Technical Data	: Input: 100-240V~50/60Hz 1.5A Output: 15V 4A
----------------	--

4.3 Channel List

Channel No.	Frequency (MHz)	Channel No.	Frequency (MHz)	Channel No.	Frequency (MHz)	Channel No.	Frequency (MHz)
0	2402	1	2404	2	2406	3	2408
4	2410	5	2412	6	2414	7	2416
8	2418	9	2420	10	2422	11	2424
12	2426	13	2428	14	2430	15	2432
16	2434	17	2436	18	2438	19	2440
20	2442	21	2444	22	2446	23	2448
24	2450	25	2452	26	2454	27	2456
28	2458	29	2460	30	2462	31	2464
32	2466	33	2468	34	2470	35	2472
36	2474	37	2476	38	2478	39	2480

4.4 Test Mode

All test mode(s) and condition(s) mentioned were considered and evaluated respectively by performing full tests, the worst data were recorded and reported.

Table 1 Tests Carried Out Under FCC part 15.247

Test mode	Low channel	Middle channel	High channel
Transmitting	2402MHz	2440MHz	2480MHz

Table 2 Tests Carried Out Under FCC part 15.209

Test Item	Test Mode
Radiated Emissions	Communication

4.5 Test Facility

The test facility has a test site registered with the following organizations:

- **IC – Registration No.: 7760A**

Waltek Services(Shenzhen) Co., Ltd. Has been registered and fully described in a report filed with the Industry Canada. The acceptance letter from the Industry Canada is maintained in our files.

Registration number 7760A, October 15, 2015

- **FCC Test Site 1#– Registration No.: 880581**

Waltek Services(Shenzhen) Co., Ltd. EMC Laboratory `has been registered and fully described in a report filed with the (FCC) Federal Communications Commission. The acceptance letter from the FCC is maintained in our files. Registration 880581, April 29, 2014.

- **FCC Test Site 2#– Registration No.: 328995**

Waltek Services(Shenzhen) Co., Ltd. EMC Laboratory `has been registered and fully described in a report filed with the (FCC) Federal Communications Commission. The acceptance letter from the FCC is maintained in our files. Registration 328995, December 3, 2014.

5 Equipment Used during Test

5.1 Equipments List

Conducted Emissions Test Site 1#						
Item	Equipment	Manufacturer	Model No.	Serial No.	Last Calibration Date	Calibration Due Date
1.	EMI Test Receiver	R&S	ESCI	100947	Sep.15,2015	Sep.14,2016
2.	LISN	R&S	ENV216	101215	Sep.15,2015	Sep.14,2016
3.	Cable	Top	TYPE16(3.5M)	-	Sep.15,2015	Sep.14,2016
Conducted Emissions Test Site 2#						
Item	Equipment	Manufacturer	Model No.	Serial No.	Last Calibration Date	Calibration Due Date
1.	EMI Test Receiver	R&S	ESCI	101155	Sep.15,2015	Sep.14,2016
2.	LISN	SCHWARZBECK	NSLK 8128	8128-289	Sep.15,2015	Sep.14,2016
3.	Limiter	York	MTS-IMP-136	261115-001-0024	Sep.15,2015	Sep.14,2016
4.	Cable	LARGE	RF300	-	Sep.15,2015	Sep.14,2016
3m Semi-anechoic Chamber for Radiation Emissions Test site 1#(30MHz-25GHz)						
Item	Equipment	Manufacturer	Model No.	Serial No.	Last Calibration Date	Calibration Due Date
1	EMC Analyzer	Agilent	E7405A	MY45114943	Sep.15,2015	Sep.14,2016
2	Active Loop Antenna	Beijing Dazhi	ZN30900A	-	Sep.15,2015	Sep.14,2016
3	Trilog Broadband Antenna	SCHWARZBECK	VULB9163	336	Apr.19,2015	Apr.18,2016
4	Coaxial Cable (below 1GHz)	Top	TYPE16(13M)	-	Sep.15,2015	Sep.14,2016
5	Broad-band Horn Antenna	SCHWARZBECK	BBHA 9120 D	667	Apr.19,2015	Apr.18,2016
6	Broad-band Horn Antenna	SCHWARZBECK	BBHA 9170	335	Apr.19,2015	Apr.18,2016
7	Broadband Preamplifier	COMPLIANCE DIRECTION	PAP-1G18	2004	Mar.17,2015	Mar.16,2016
8	Coaxial Cable (above 1GHz)	Top	1GHz-25GHz	EW02014-7	Apr.10,2015	Apr.09,2016
3m Semi-anechoic Chamber for Radiation Emissions Test site 2#(9KHz-30MHz)						
Item	Equipment	Manufacturer	Model No.	Serial No	Last Calibration Date	Calibration Due Date
1	Test Receiver	R&S	ESCI	101296	Sep.15,2015	Sep.14,2016
2	Trilog Broadband Antenna	SCHWARZBECK	VULB9160	9160-3325	Sep.15,2015	Sep.14,2016
3	Amplifier	Compliance pirection systems inc	PAP-0203	22024	Sep.15,2015	Sep.14,2016
4	Cable	HUBER+SUHNER	CBL2	525178	Sep.15,2015	Sep.14,2016

RF Conducted Testing						
Item	Equipment	Manufacturer	Model No.	Serial No.	Last Calibration Date	Calibration Due Date
1.	EMC Analyzer (9k~26.5GHz)	Agilent	E7405A	MY45114943	Sep.15,2015	Sep.14,2016
2.	Spectrum Analyzer (9k-6GHz)	R&S	FSL6	100959	Sep.15,2015	Sep.14,2016
3.	Signal Analyzer (9k~26.5GHz)	Agilent	N9010A	MY50520207	Sep.15,2015	Sep.14,2016

5.2 Measurement Uncertainty

Parameter	Uncertainty
Radio Frequency	$\pm 1 \times 10^{-6}$
RF Power	± 1.0 dB
RF Power Density	± 2.2 dB
Radiated Spurious Emissions test	± 5.03 dB (Bilog antenna 30M~1000MHz)
	± 4.74 dB (Horn antenna 1000M~25000MHz)
Conducted Spurious Emissions test	± 3.64 dB (AC mains 150KHz~30MHz)

5.3 Test Equipment Calibration

All the test equipments used are valid and calibrated by CEPREI Certification Body that address is No.110 Dongguan Zhuang RD. Guangzhou, P.R.China.

6 Conducted Emission

Test Requirement:	FCC CFR 47 Part 15 Section 15.207
Test Method:	ANSI C63.4:2003
Test Result:	PASS
Frequency Range:	150kHz to 30MHz
Class/Severity:	Class B
Limit:	66-56 dB μ V between 0.15MHz & 0.5MHz 56 dB μ V between 0.5MHz & 5MHz 60 dB μ V between 5MHz & 30MHz
Detector:	Peak for pre-scan (9kHz Resolution Bandwidth)

6.1 E.U.T. Operation

Operating Environment :

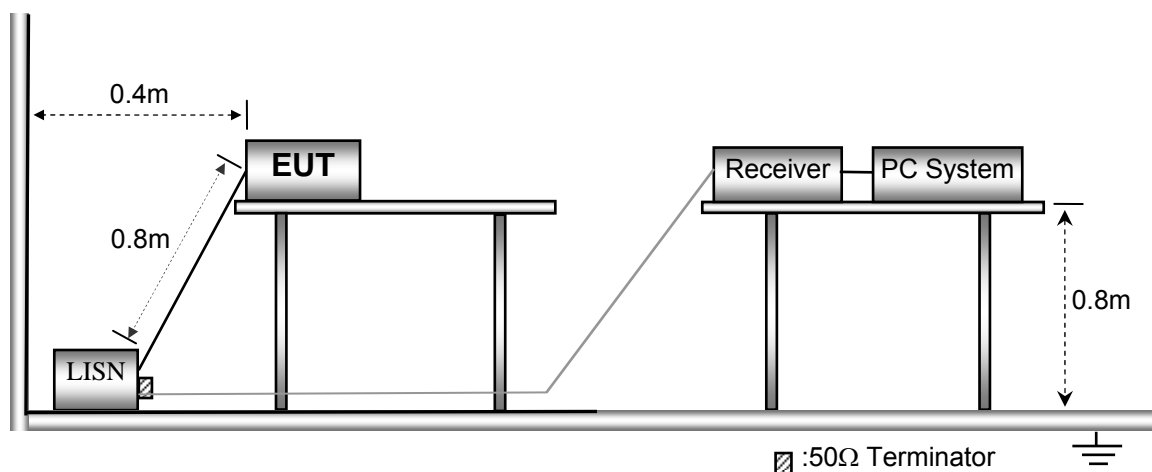
Temperature:	25.5 °C
Humidity:	51 % RH
Atmospheric Pressure:	101.2kPa

EUT Operation :

The test was performed in Transmitting mode, the test data were shown in the report.

6.2 EUT Setup

The conducted emission tests were performed using the setup accordance with the ANSI C63.4:2003.

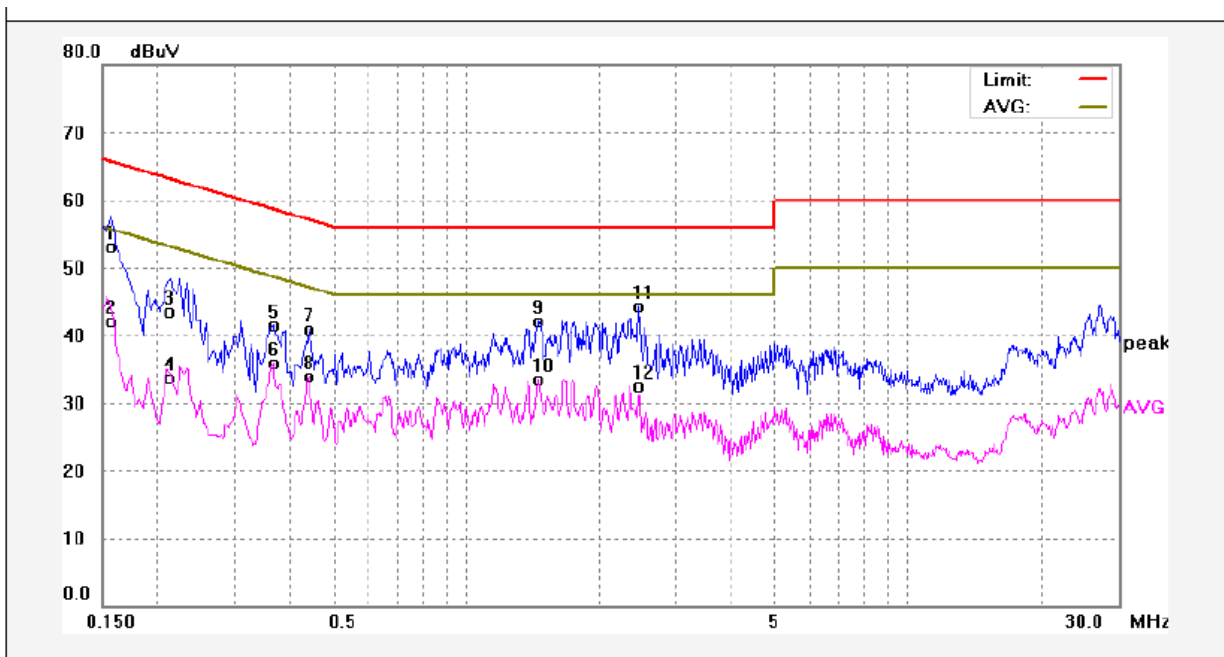


6.3 Measurement Description

The maximised peak emissions from the EUT was scanned and measured for both the Live and Neutral Lines. Quasi-peak & average measurements were performed if peak emissions were within 6dB of the average limit line.

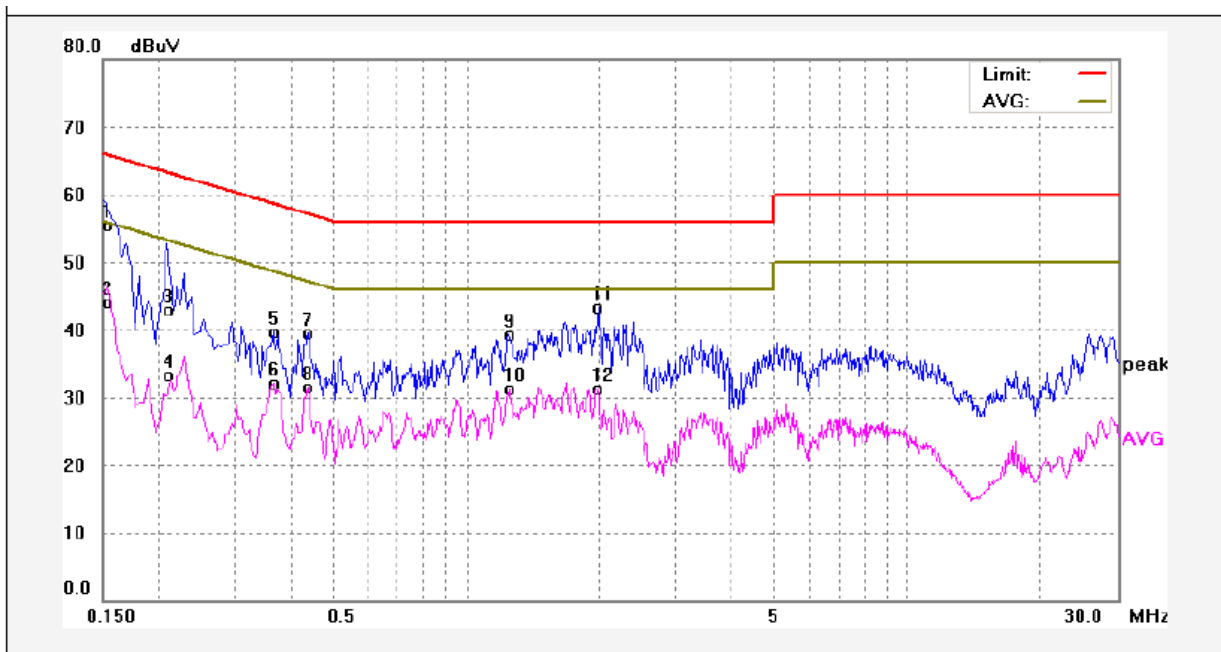
6.4 Conducted Emission Test Result

Live line:



No.	Freq. (MHz)	Reading (dBuV)	Factor (dB)	Result (dBuV)	Limit dBuV	Margin (dB)	Detector	Remark
1	0.1580	43.01	10.13	53.14	65.56	-12.42	QP	
2	0.1580	31.89	10.13	42.02	55.56	-13.54	AVG	
3	0.2140	33.38	10.15	43.53	63.04	-19.51	QP	
4	0.2140	23.61	10.15	33.76	53.04	-19.28	AVG	
5	0.3653	31.26	10.17	41.43	58.61	-17.18	QP	
6	0.3653	25.81	10.17	35.98	48.61	-12.63	AVG	
7	0.4397	30.69	10.18	40.87	57.07	-16.20	QP	
8	0.4397	23.74	10.18	33.92	47.07	-13.15	AVG	
9	1.4562	31.96	10.23	42.19	56.00	-13.81	QP	
10	1.4562	23.35	10.23	33.58	46.00	-12.42	AVG	
11	2.4476	34.02	10.26	44.28	56.00	-11.72	QP	
12	2.4476	22.18	10.26	32.44	46.00	-13.56	AVG	

Neutral line:



No.	Freq. (MHz)	Reading (dBuV)	Factor (dB)	Result (dBuV)	Limit dBuV	Margin (dB)	Detector	Remark
1	0.1500	45.46	10.13	55.59	65.99	-10.40	QP	
2	0.1500	34.05	10.13	44.18	55.99	-11.81	AVG	
3	0.2100	32.67	10.15	42.82	63.20	-20.38	QP	
4	0.2100	23.07	10.15	33.22	53.20	-19.98	AVG	
5	0.3653	29.61	10.17	39.78	58.61	-18.83	QP	
6	0.3653	22.03	10.17	32.20	48.61	-16.41	AVG	
7	0.4374	29.38	10.18	39.56	57.11	-17.55	QP	
8	0.4374	21.25	10.18	31.43	47.11	-15.68	AVG	
9	1.2422	29.05	10.23	39.28	56.00	-16.72	QP	
10	1.2422	21.13	10.23	31.36	46.00	-14.64	AVG	
11	1.9906	33.10	10.25	43.35	56.00	-12.65	QP	
12	1.9906	21.01	10.25	31.26	46.00	-14.74	AVG	

7 Radiated Emissions

Test Requirement: FCC CFR47 Part 15 Section 15.209 & 15.247

Test Method: ANSI C63.4:2003

Test Result: PASS

Measurement Distance: 3m

Limit:

Frequency (MHz)	Field Strength		Field Strength Limit at 3m Measurement Dist	
	uV/m	Distance (m)	uV/m	dBuV/m
0.009 ~ 0.490	2400/F(kHz)	300	10000 * 2400/F(kHz)	$20\log^{(2400/F(kHz))} + 80$
0.490 ~ 1.705	24000/F(kHz)	30	100 * 24000/F(kHz)	$20\log^{(24000/F(kHz))} + 40$
1.705 ~ 30	30	30	100 * 30	$20\log^{(30)} + 40$
30 ~ 88	100	3	100	$20\log^{(100)}$
88 ~ 216	150	3	150	$20\log^{(150)}$
216 ~ 960	200	3	200	$20\log^{(200)}$
Above 960	500	3	500	$20\log^{(500)}$

7.1 EUT Operation

Operating Environment:

Temperature: 25.5 °C

Humidity: 51 % RH

Atmospheric Pressure: 1016 mbar

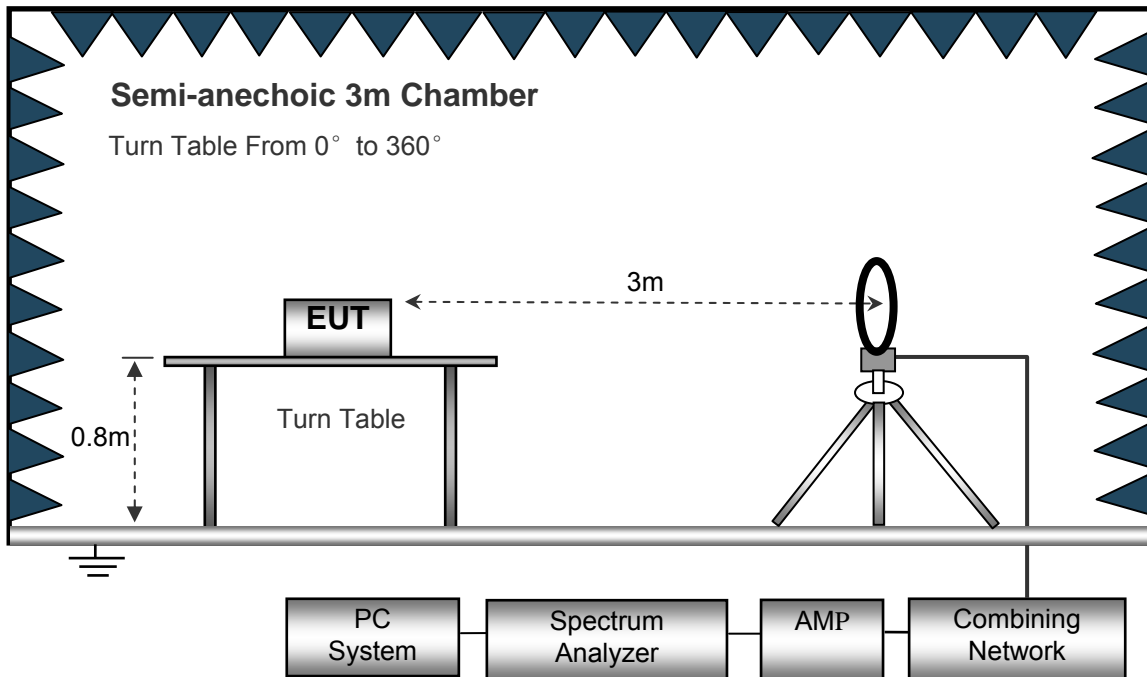
EUT Operation:

The test was performed in transmitting mode, the test data were shown in the report.

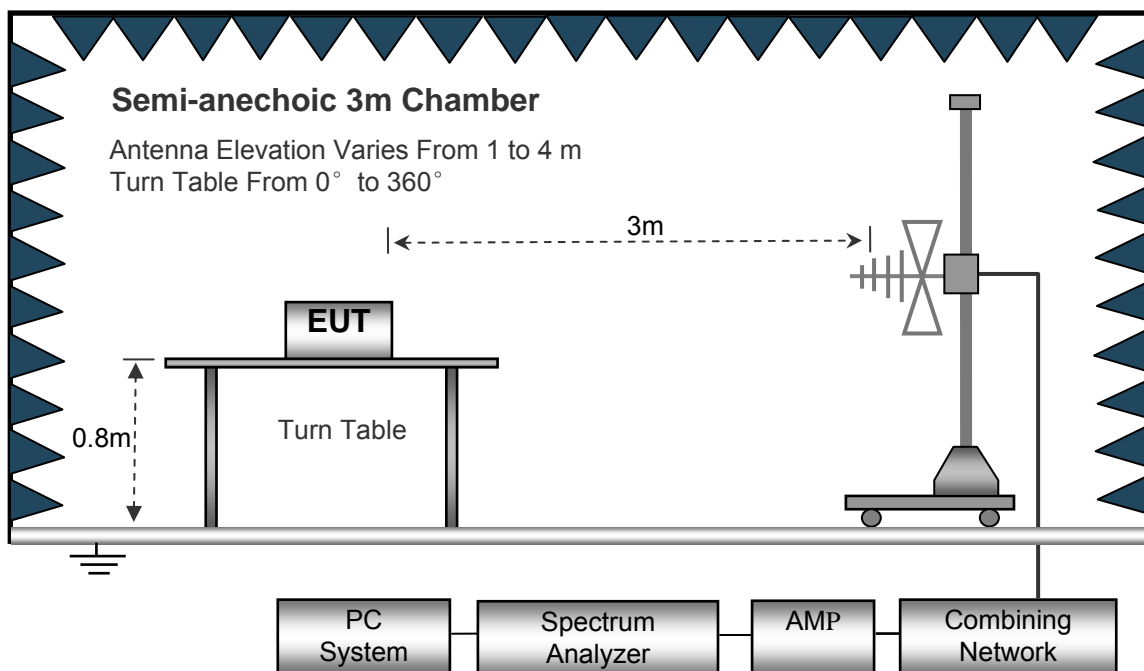
7.2 Test Setup

The radiated emission tests were performed in the 3m Semi- Anechoic Chamber test site, using the setup accordance with the ANSI C63.4: 2003.

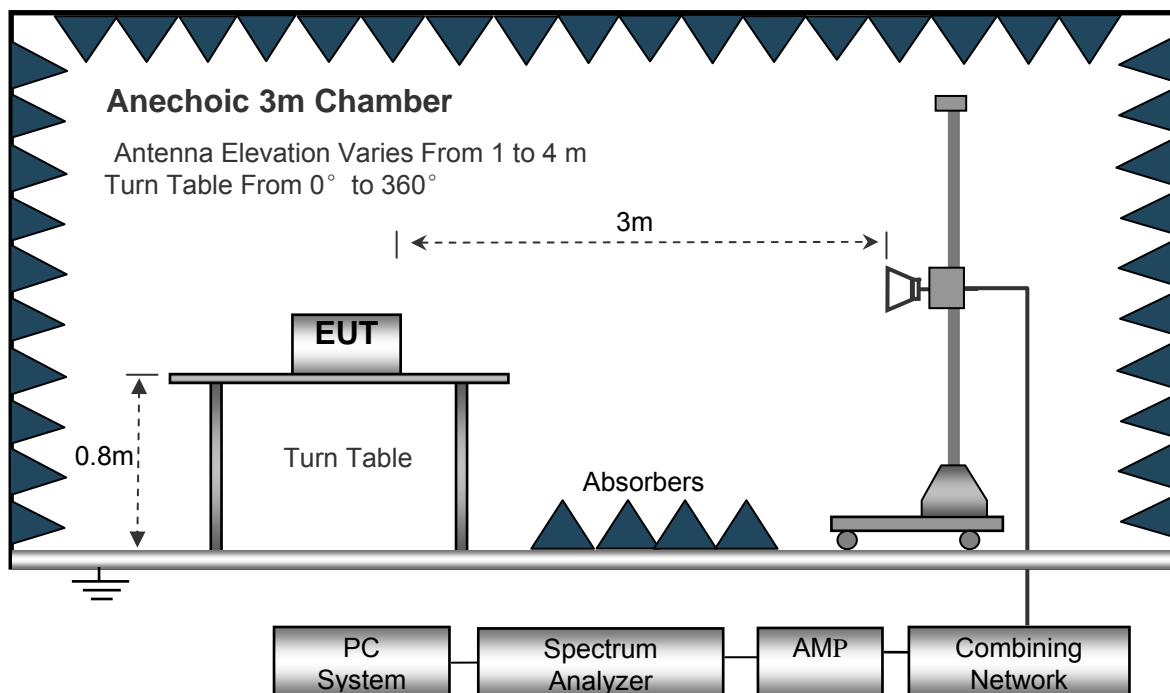
The test setup for emission measurement below 30MHz.



The test setup for emission measurement from 30 MHz to 1 GHz.



The test setup for emission measurement above 1 GHz.



7.3 Spectrum Analyzer Setup

Below 30MHz

Sweep Speed Auto
 IF Bandwidth..... 10kHz
 Video Bandwidth..... 10kHz
 Resolution Bandwidth..... 10kHz

30MHz ~ 1GHz

Sweep Speed Auto
 Detector PK
 Resolution Bandwidth..... 100kHz
 Video Bandwidth..... 300kHz

Above 1GHz

Sweep Speed Auto
 Detector PK
 Resolution Bandwidth..... 1MHz
 Video Bandwidth..... 3MHz
 Detector Ave.
 Resolution Bandwidth..... 1MHz
 Video Bandwidth..... 10Hz

7.4 Test Procedure

1. The EUT is placed on a turntable, which is 0.8m above ground plane.
2. The turntable shall be rotated for 360 degrees to determine the position of maximum emission level.
3. EUT is set 3m away from the receiving antenna, which is moved from 1m to 4m to find out the maximum emissions.
4. Maximum procedure was performed on the six highest emissions to ensure EUT compliance.
5. And also, each emission was to be maximized by changing the polarization of receiving antenna both horizontal and vertical.
6. Repeat above procedures until the measurements for all frequencies are complete.
7. The radiation measurements are performed in X,Y and Z axis positioning(X denotes lying on the table, Y denotes side stand and Z denotes vertical stand),the worst condition was tested putting the eut in X axis,so the worst data were shown as follow.

7.5 Summary of Test Results

Test Frequency: 32.768kHz~30MHz

The measurements were more than 20 dB below the limit and not reported.

Test Frequency: 30MHz ~ 18GHz

Frequency	Receiver Reading	Detector	Turn table Angle	RX Antenna		Corrected Factor	Corrected Amplitude	Limit	Margin
				Height	Polar				
(MHz)	(dB μ V)	(PK/QP/Ave)	Degree	(m)	(H/V)	(dB)	(dB μ V/m)	(dB μ V/m)	(dB)
GFSK Low Channel									
268.35	36.87	QP	19	1.3	H	-13.35	23.52	46.00	-22.48
268.35	41.36	QP	180	1.7	V	-13.35	28.01	46.00	-17.99
4804.00	46.18	PK	228	1.5	V	-1.06	45.12	74.00	-28.88
4804.00	43.55	Ave	228	1.5	V	-1.06	42.49	54.00	-11.51
7206.00	40.69	PK	144	1.6	H	1.33	42.02	74.00	-31.98
7206.00	35.37	Ave	144	1.6	H	1.33	36.70	54.00	-17.30
2331.12	45.18	PK	128	1.5	V	-13.19	31.99	74.00	-42.01
2331.12	39.84	Ave	128	1.5	V	-13.19	26.65	54.00	-27.35
2358.43	44.59	PK	97	1.7	H	-13.14	31.45	74.00	-42.55
2358.43	38.55	Ave	97	1.7	H	-13.14	25.41	54.00	-28.59
2492.72	43.06	PK	239	1.6	V	-13.08	29.98	74.00	-44.02
2492.72	36.94	Ave	239	1.6	V	-13.08	23.86	54.00	-30.14

Frequency	Receiver Reading	Detector	Turn table Angle	RX Antenna		Corrected Factor	Corrected Amplitude	Limit	Margin
				Height	Polar				
(MHz)	(dB μ V)	(PK/QP/Ave)	Degree	(m)	(H/V)	(dB)	(dB μ V/m)	(dB μ V/m)	(dB)
GFSK Middle Channel									
268.35	37.04	QP	129	1.2	H	-13.35	23.69	46.00	-22.31
268.35	41.76	QP	42	1.8	V	-13.35	28.41	46.00	-17.59
4882.00	46.30	PK	292	1.7	V	-0.62	45.68	74.00	-28.32
4882.00	42.16	Ave	292	1.7	V	-0.62	41.54	54.00	-12.46
7323.00	40.11	PK	188	1.2	H	2.21	42.32	74.00	-31.68
7323.00	35.77	Ave	188	1.2	H	2.21	37.98	54.00	-16.02
2328.22	46.03	PK	245	1.9	V	-13.19	32.84	74.00	-41.16
2328.22	38.65	Ave	245	1.9	V	-13.19	25.46	54.00	-28.54
2383.27	42.48	PK	336	1.2	H	-13.14	29.34	74.00	-44.66
2383.27	37.33	Ave	336	1.2	H	-13.14	24.19	54.00	-29.81
2486.91	44.47	PK	247	1.5	V	-13.08	31.39	74.00	-42.61
2486.91	38.20	Ave	247	1.5	V	-13.08	25.12	54.00	-28.88

Frequency	Receiver Reading	Detector	Turn table Angle	RX Antenna		Corrected Factor	Corrected Amplitude	Limit	Margin
				Height	Polar				
(MHz)	(dB μ V)	(PK/QP/Ave)	Degree	(m)	(H/V)	(dB)	(dB μ V/m)	(dB μ V/m)	(dB)
GFSK High Channel									
268.35	38.38	QP	177	1.1	H	-13.35	25.03	46.00	-20.97
268.35	40.96	QP	86	1.5	V	-13.35	27.61	46.00	-18.39
4960.00	46.84	PK	192	1.7	V	-0.24	46.60	74.00	-27.40
4960.00	42.36	Ave	192	1.7	V	-0.24	42.12	54.00	-11.88
7440.00	41.45	PK	340	1.1	H	2.84	44.29	74.00	-29.71
7440.00	35.30	Ave	340	1.1	H	2.84	38.14	54.00	-15.86
2315.28	45.66	PK	126	1.9	V	-13.19	32.47	74.00	-41.53
2315.28	37.52	Ave	126	1.9	V	-13.19	24.33	54.00	-29.67
2360.97	44.72	PK	45	1.4	H	-13.14	31.58	74.00	-42.42
2360.97	36.89	Ave	45	1.4	H	-13.14	23.75	54.00	-30.25
2495.25	43.83	PK	88	1.9	V	-13.08	30.75	74.00	-43.25
2495.25	37.70	Ave	88	1.9	V	-13.08	24.62	54.00	-29.38

Test Frequency: 18GHz~25GHz

The measurements were more than 20 dB below the limit and not reported

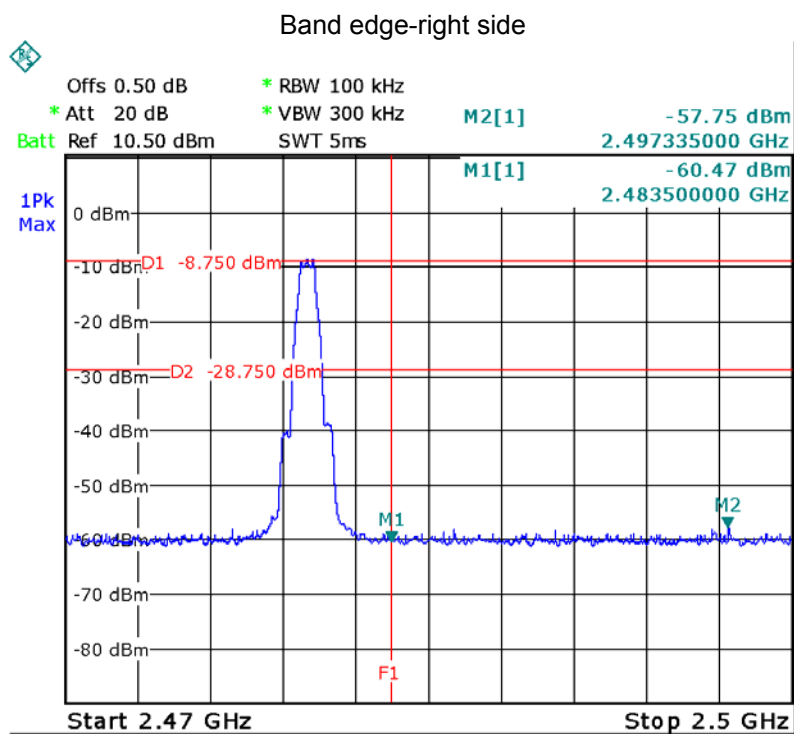
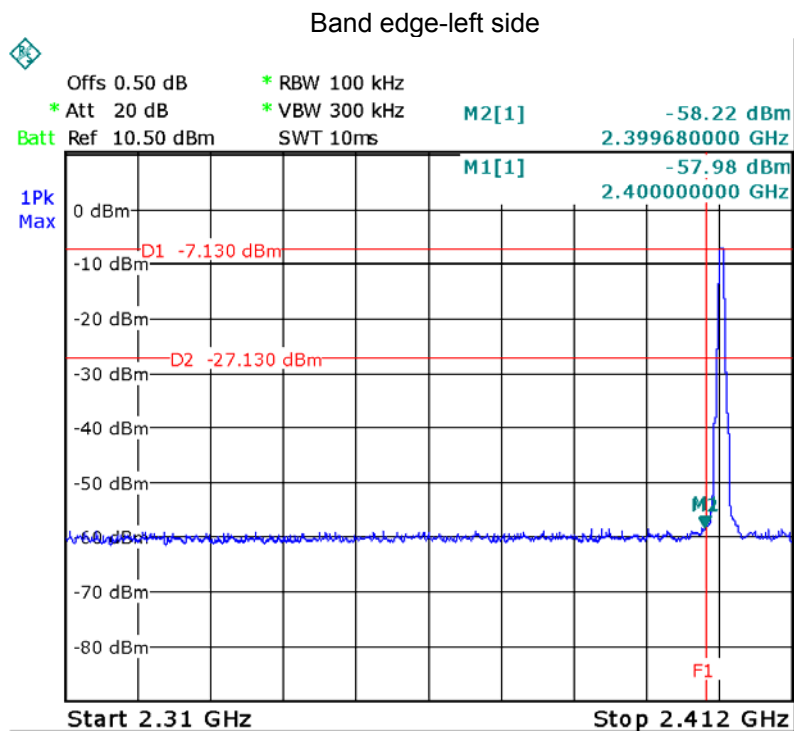
8 Band Edge Measurement

Test Requirement:	Section 15.247(d) In addition, radiated emissions which fall in the restricted bands. as defined in Section 15.205(a), must also comply with the radiated emission limits specified in Section 15.209(a) and 15.205(c).
Test Method:	KDB558074 D01 DTS Meas Guidance v03r03
Test Mode:	Transmitting

8.1 Test Produce

1. Check the calibration of the measuring instrument using either an internal calibrator or a known signal from an external generator.
2. Position the EUT without connection to measurement instrument. Turn on the EUT and connect its antenna terminal to measurement instrument via a low loss cable. Then set it to any one measured frequency within its operating range, and make sure the instrument is operated in its linear range.
3. Set the spectrum analyzer: RBW = 100kHz, VBW = 300kHz, Sweep = auto
Detector function = peak, Trace = max hold
4. Measure the highest amplitude appearing on spectral display and set it as a reference level. Plot the graph with marking the highest point and edge frequency.
5. Repeat above procedures until all measured frequencies were complete.

8.2 Test Result



9 6 dB Bandwidth Measurement

Test Requirement: FCC CFR47 Part 15 Section 15.247
 Test Method: KDB558074 D01 DTS Meas Guidance v03r03

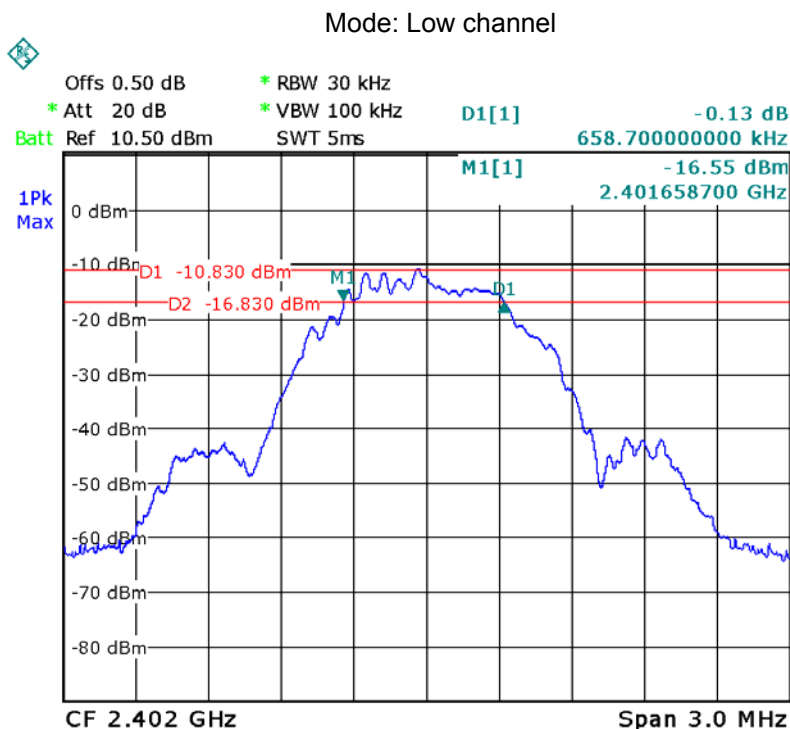
9.1 Test Procedure

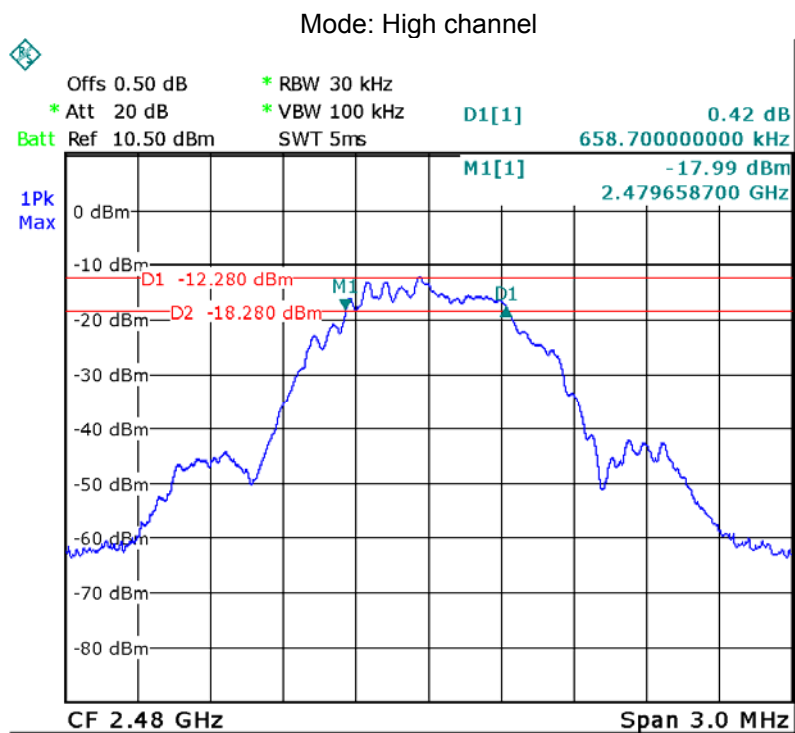
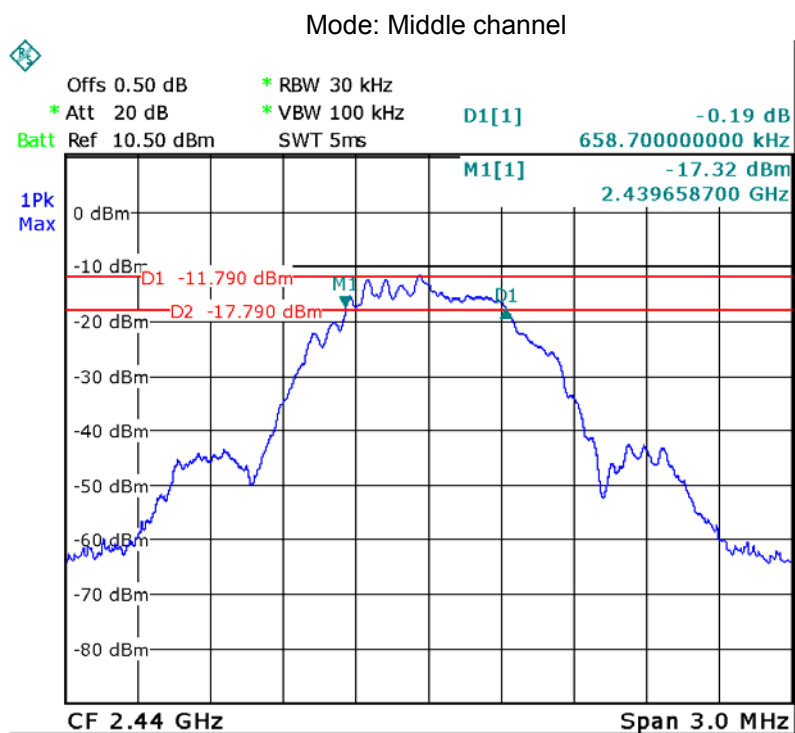
1. Remove the antenna from the EUT and then connect a low RF cable from the antenna port to the spectrum;
2. Set the spectrum analyzer: RBW = 30kHz, VBW = 100kHz

9.2 Test Result

Operation mode	Bandwidth (MHz)
Low channel	0.659
Middle channel	0.659
High channel	0.659

Test result plot as follows:





10 Maximum Peak Output Power

Test Requirement:

FCC CFR47 Part 15 Section 15.247

Test Method:

KDB558074 D01 DTS Meas Guidance v03r03

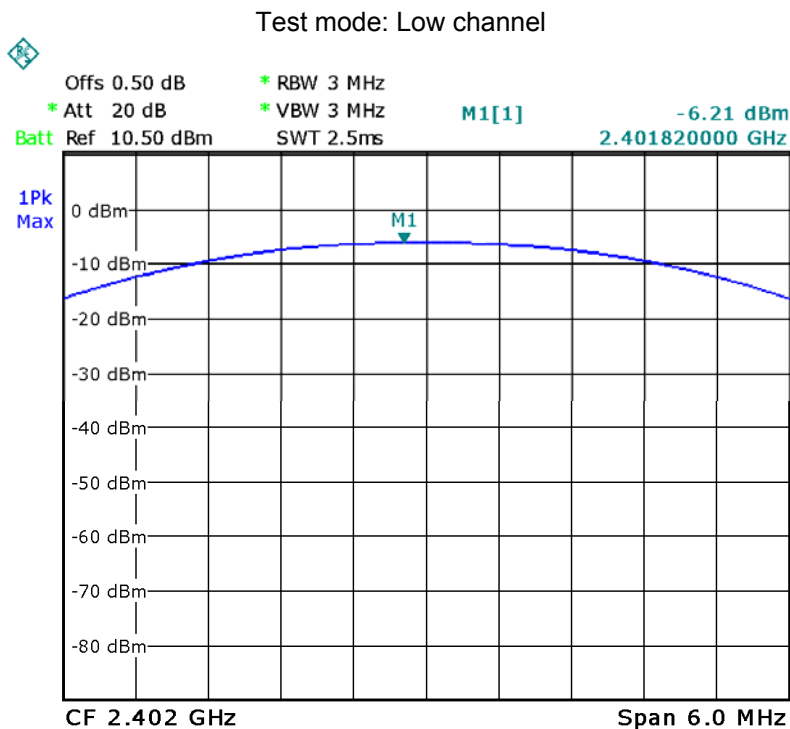
10.1 Test Procedure

KDB558074 D01 DTS Meas Guidance v03r03 section 8.1.2 Option 2

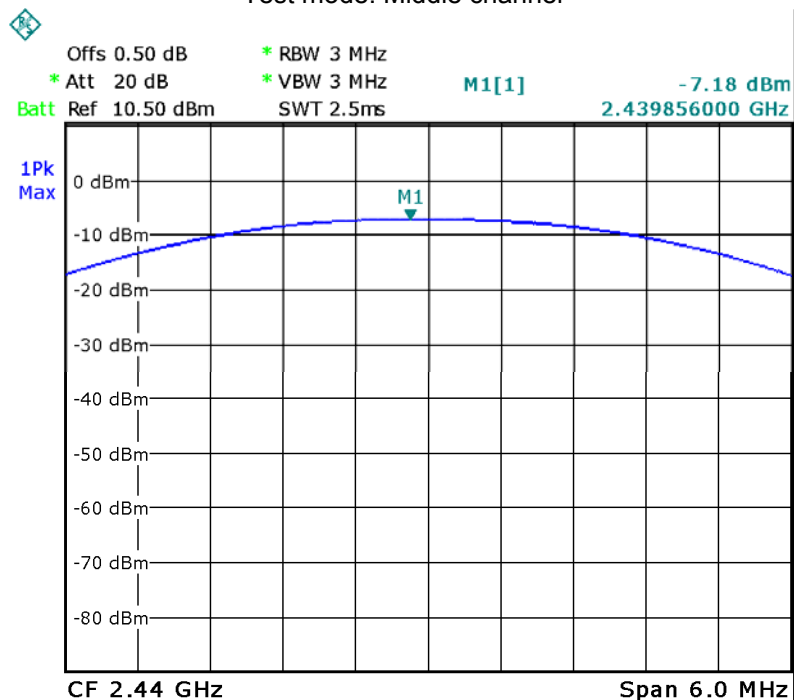
1. Remove the antenna from the EUT and then connect a low RF cable from the antenna port to the spectrum.
2. Set the spectrum analyzer: RBW = 3MHz. VBW = 3MHz. Sweep = auto; Detector Function = Peak, Set the span to fully encompass the DTS bandwidth.
3. Keep the EUT in transmitting at lowest, medium and highest channel individually. Record the max value.

10.2 Test Result

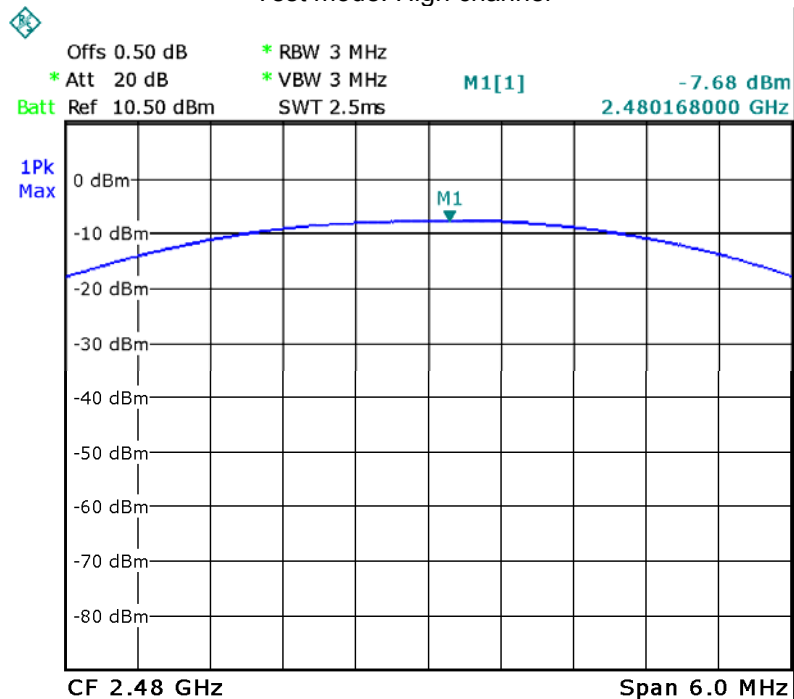
Maximum Peak Output Power (dBm)		
Low channel	Middle channel	High channel
-6.21	-7.18	-7.68
Limit		
1W/30dBm		



Test mode: Middle channel



Test mode: High channel



11 Power Spectral density

Test Requirement: FCC CFR47 Part 15 Section 15.247

Test Method: KDB558074 D01 DTS Meas Guidance v03r03

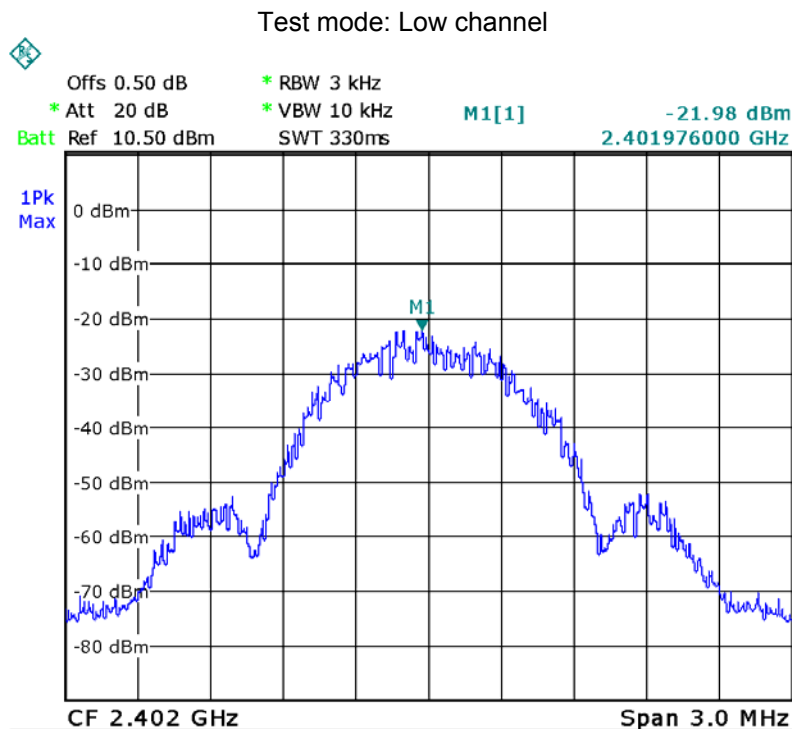
11.1 Test Procedure

KDB558074 D01 DTS Meas Guidance v03r03 section 9.1 Option 1

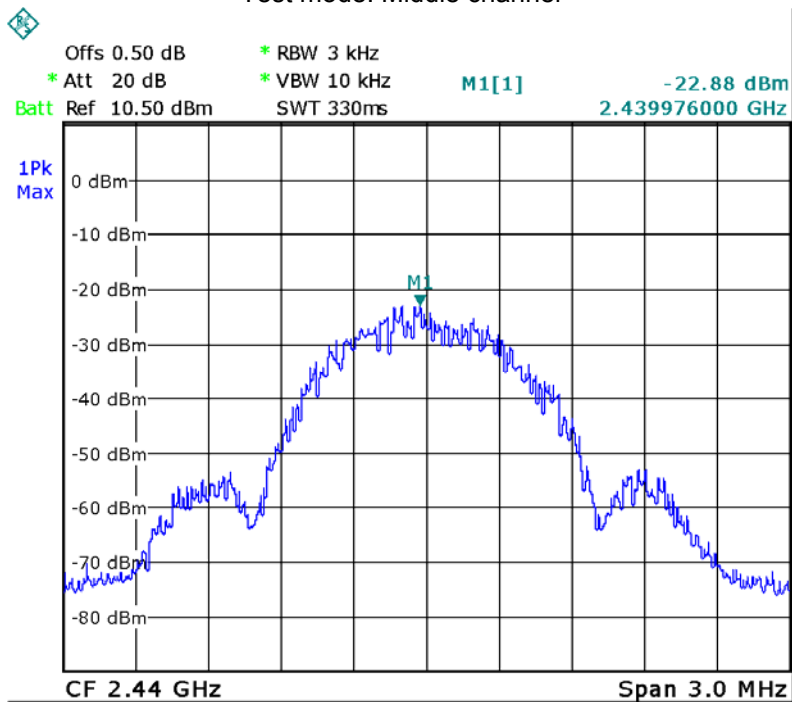
1. Remove the antenna from the EUT and then connect a low RF cable from the antenna port to the spectrum.
2. Set the spectrum analyzer: RBW = 3kHz. VBW = 10kHz , Span = 1.5 times the DTS channel bandwidth(6 dB bandwidth). Sweep = auto; Detector Function = Peak. Trace = Max hold.
3. Allow the trace to stabilize. Use the marker-delta function to determine the separation between the peaks of the adjacent channels. The limit is specified in one of the subparagraphs of this Section
Submit this plot.

11.2 Test Result

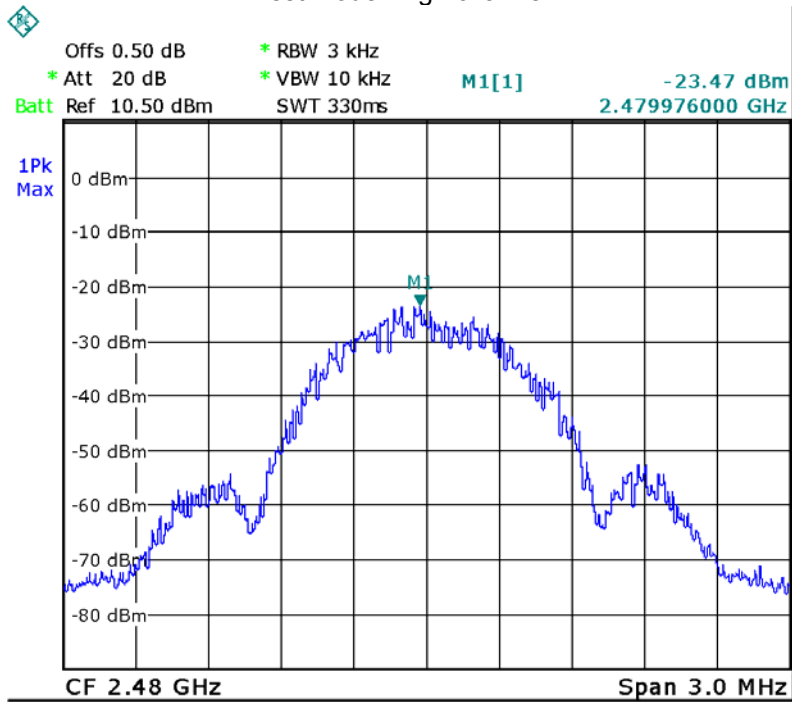
Power Spectral Density		
Low channel	Middle channel	High channel
-21.98	-22.88	-23.47
Limit		
8dBm per 3kHz		



Test mode: Middle channel



Test mode: High channel



12 Antenna Requirement

According to the FCC Part 15 Paragraph 15.203, an intentional radiator shall be designed to ensure that no antenna other than that furnished by the responsible party shall be used with the device. This product has a PCB printed antenna, fulfill the requirement of this section.

13 RF Exposure

Test Requirement: FCC Part 1.1307

Test Mode: The KDB 447498 D01 General RF Exposure Guidance v05r02.

13.1 Requirements

Systems operating under the provisions of this section shall be operated in a manner that ensures that the public is not exposed to radio frequency energy levels in excess limit for maximum permissible exposure. In accordance with 47 CFR FCC Part 2 Subpart J, section 2.1091 this device has been defined as a mobile device whereby a distance of 0.2 m normally can be maintained between the user and the device.

13.2 The procedures / limit

(A) Limits for Occupational / Controlled Exposure

Frequency Range (MHz)	Electric Field Strength (E) (V/m)	Magnetic Field Strength (H) (A/m)	Power Density (S) (mW/ cm ²)	Averaging Time E ² , H ² or S (minutes)
0.3-3.0	614	1.63	(100)*	6
3.0-30	1842 / f	4.89 / f	(900 / f)*	6
30-300	61.4	0.163	1.0	6
300-1500			F/300	6
1500-100,000			5	6

(B) Limits for General Population / Uncontrolled Exposure

Frequency Range (MHz)	Electric Field Strength (E) (V/m)	Magnetic Field Strength (H) (A/m)	Power Density (S) (mW/ cm ²)	Averaging Time E ² , H ² or S (minutes)
0.3-1.34	614	1.63	(100)*	30
1.34-30	824/f	2.19/f	(180/f)*	30
30-300	27.5	0.073	0.2	30
300-1500			F/1500	30
1500-100,000			1.0	30

Note: f = frequency in MHz ; *Plane-wave equivalent power density

13.3 MPE Calculation Method

$$E \text{ (V/m)} = \frac{\sqrt{30 \times P \times G}}{d} \qquad \text{Power Density: } Pd \text{ (W/m}^2\text{)} = \frac{E^2}{377}$$

E = Electric field (V/m)

P = Peak RF output power (W)

G = EUT Antenna numeric gain (numeric)

d = Separation distance between radiator and human body (m)

The formula can be changed to

$$Pd = \frac{30 \times P \times G}{377 \times d^2}$$

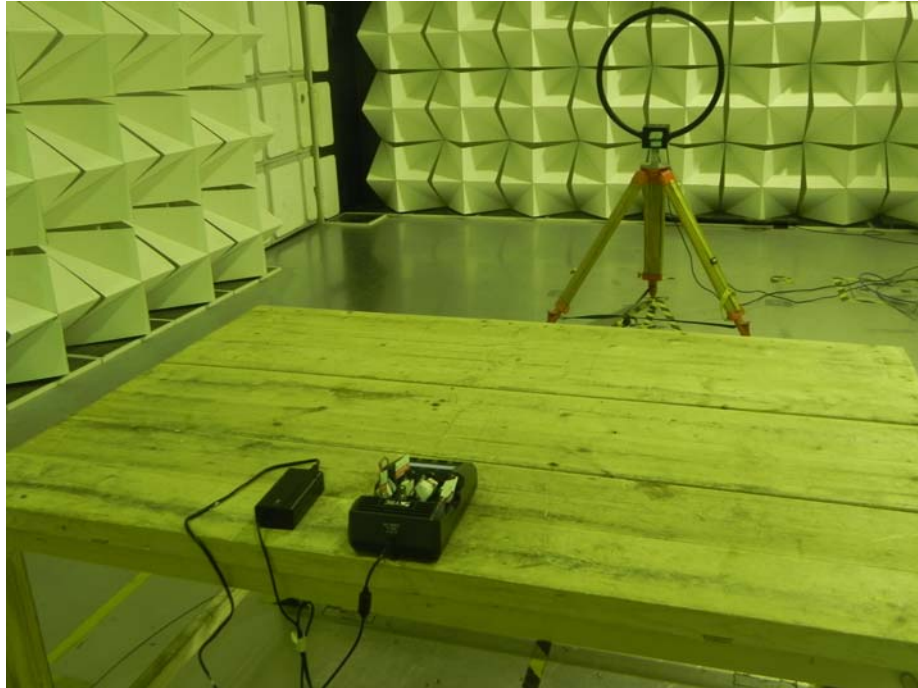
From the peak EUT RF output power, the minimum mobile separation distance, d=0.2m, as well as the gain of the used antenna, the RF power density can be obtained

Antenna Gain (numeric)	Max.Peak Output Power (dBm)	Peak Output Power (mW)	Power Density (mW/cm ²)	Limit of Power Density (mW/cm ²)
1.0	-6.21	0.24	0.000048	1

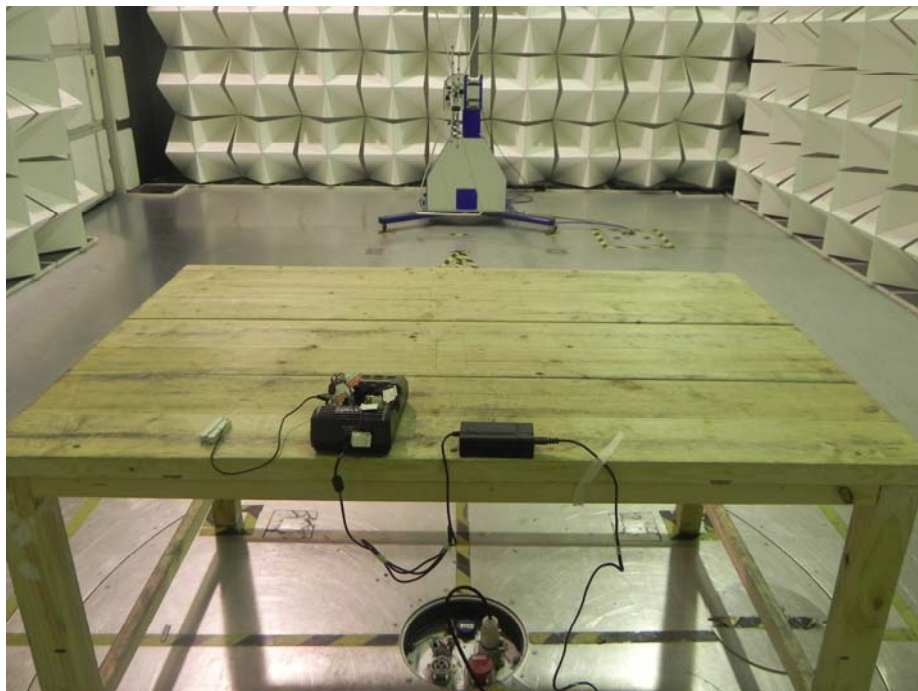
14 Photographs –Model MC3000 Test Setup

14.1 Radiated Emission

Test frequency below 30MHz Test Site 2#



Test frequency from 30MHz to 1GHz Test Site 2#



Test frequency above 1GHz Test Site 1#



14.2 Photograph – Conducted Emission Test Setup at Test Site 1#

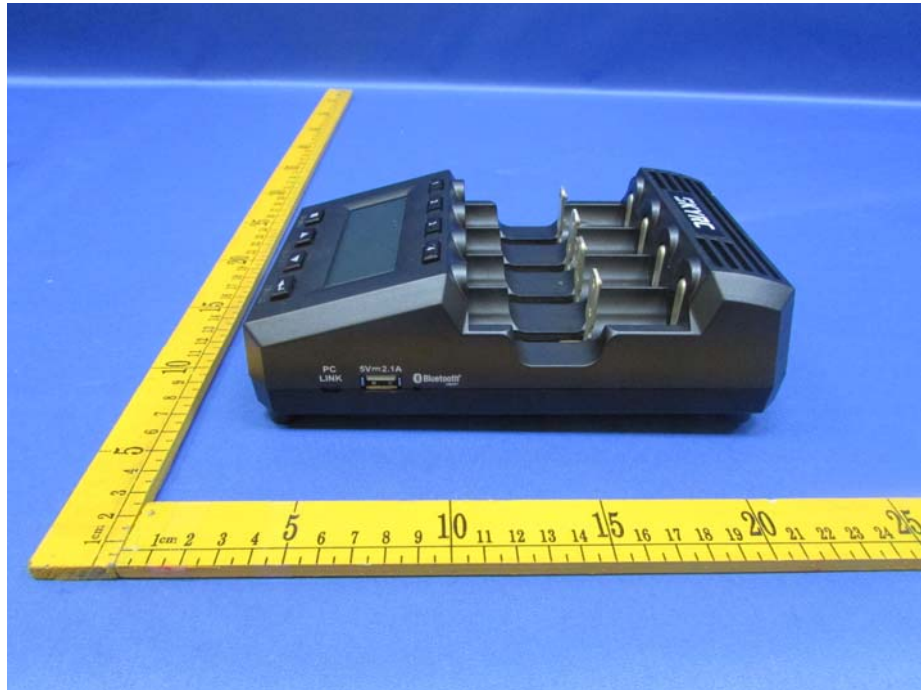


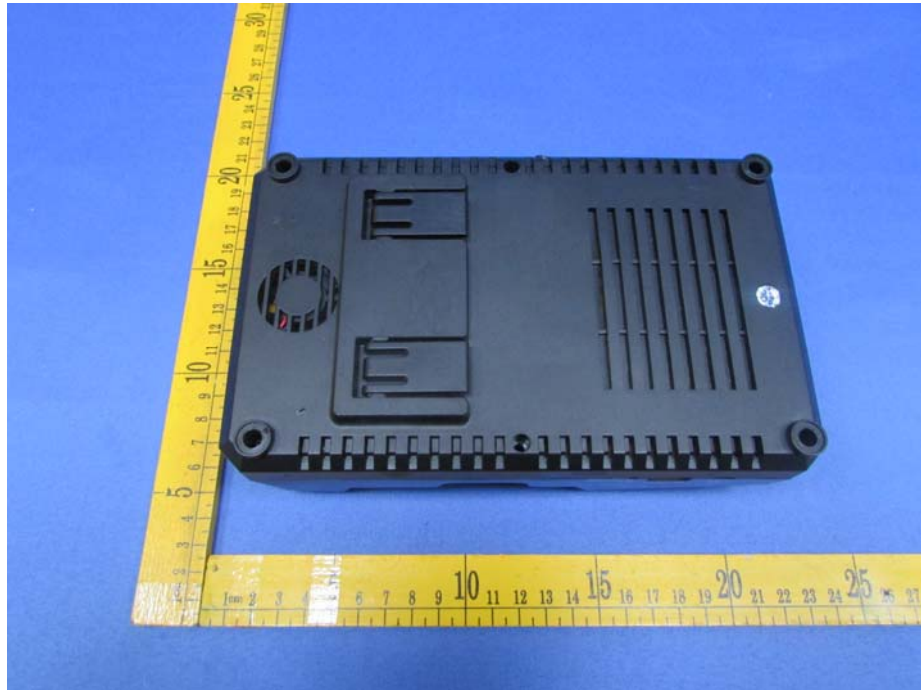
15 Photographs - Constructional Details

15.1 Model MC3000 - External Photos



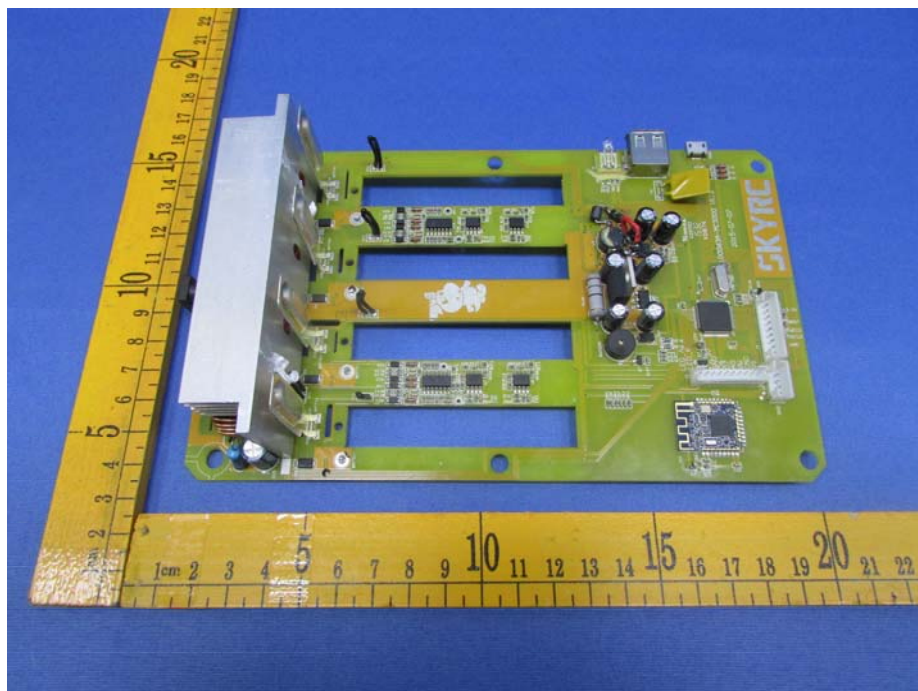


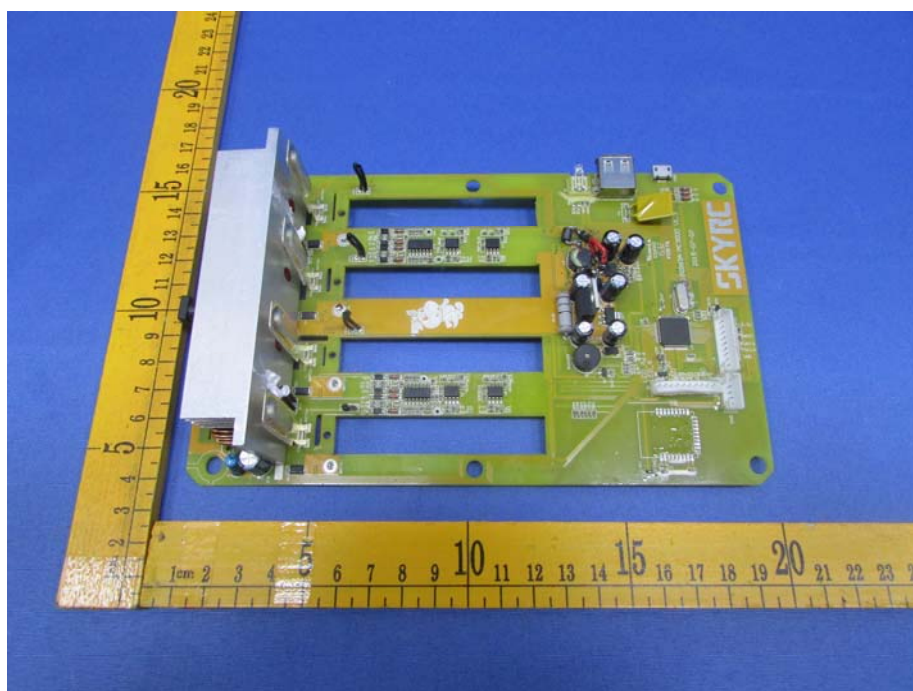
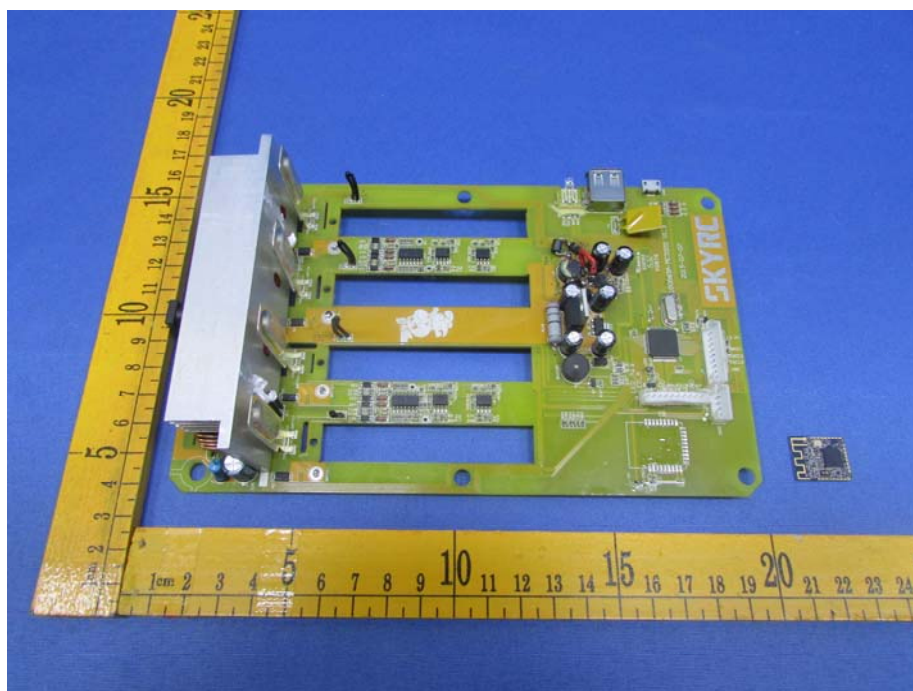


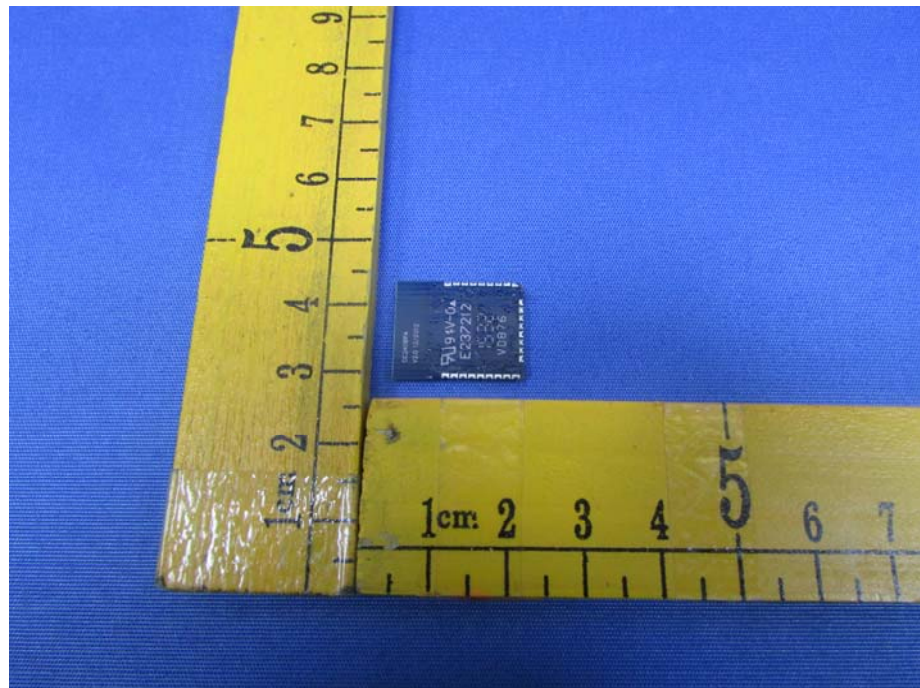
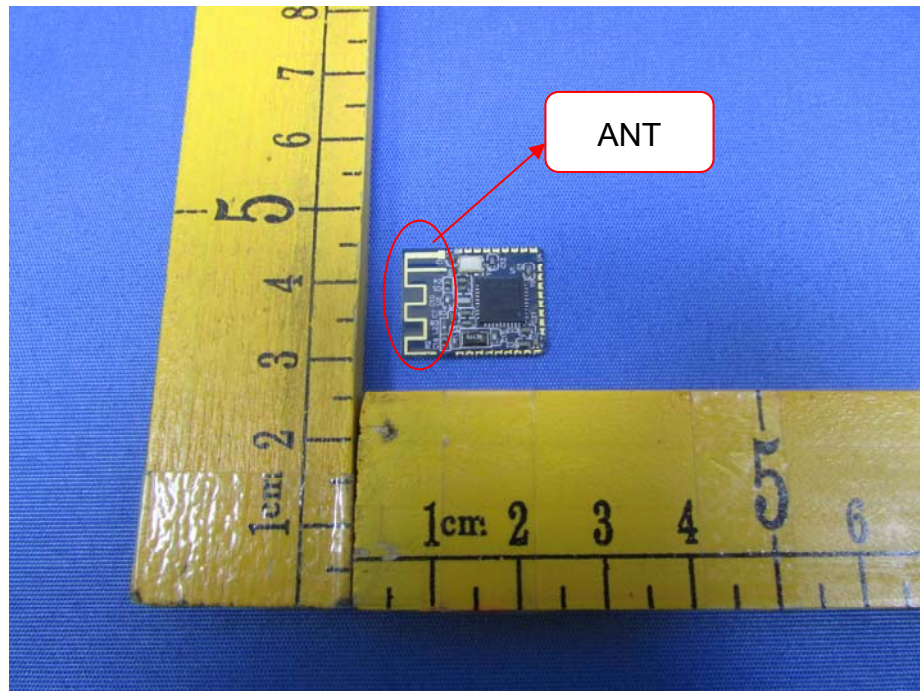


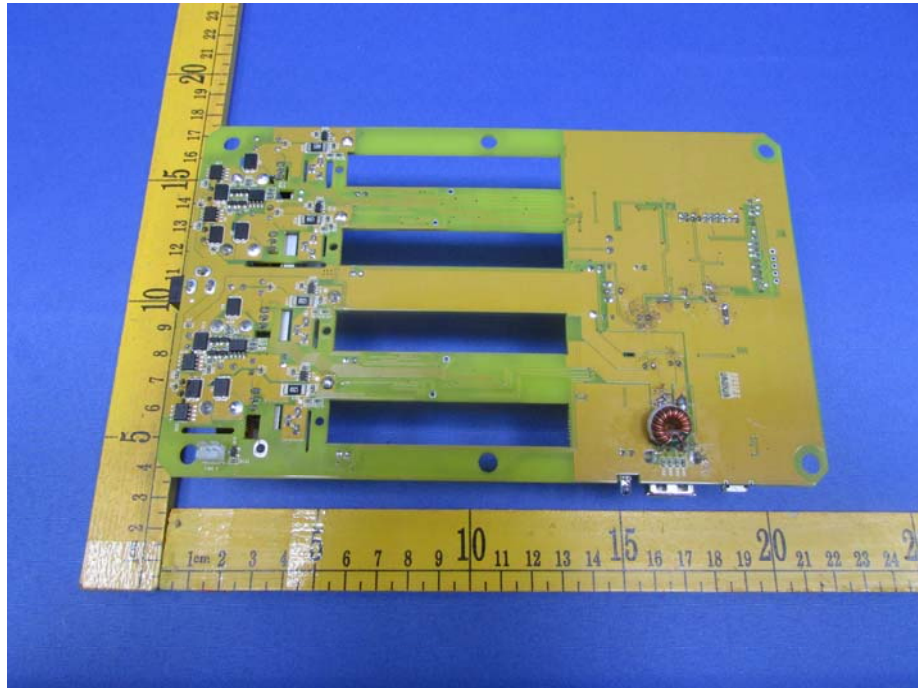


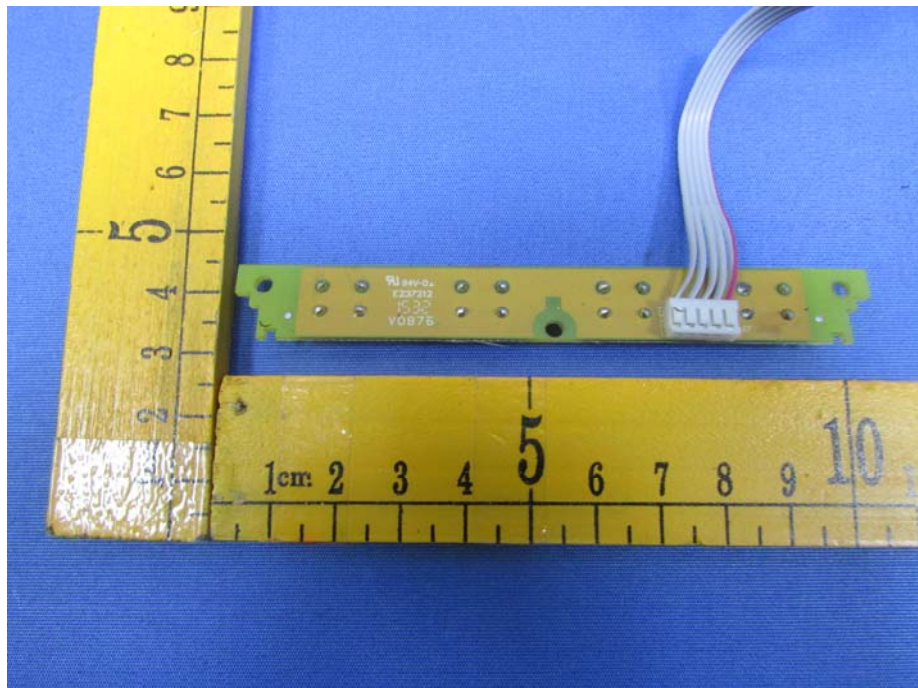
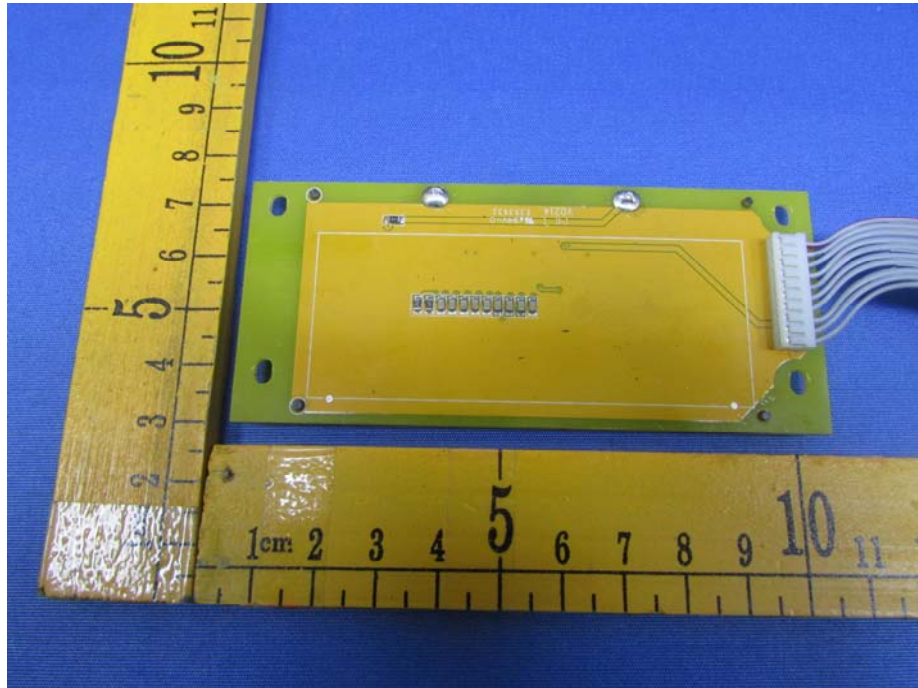
15.2 Model MC3000 - Internal Photos

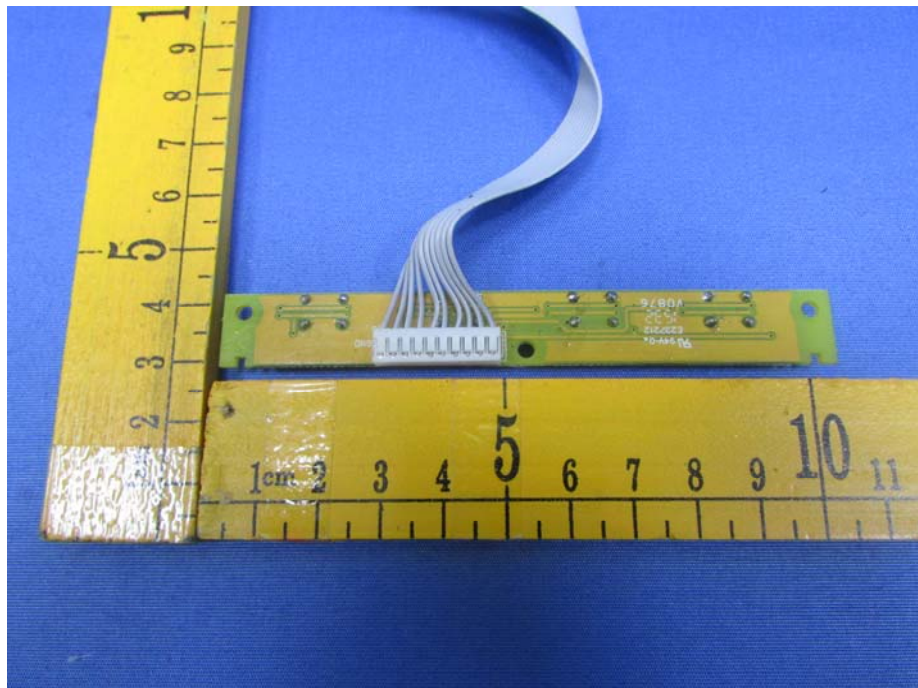
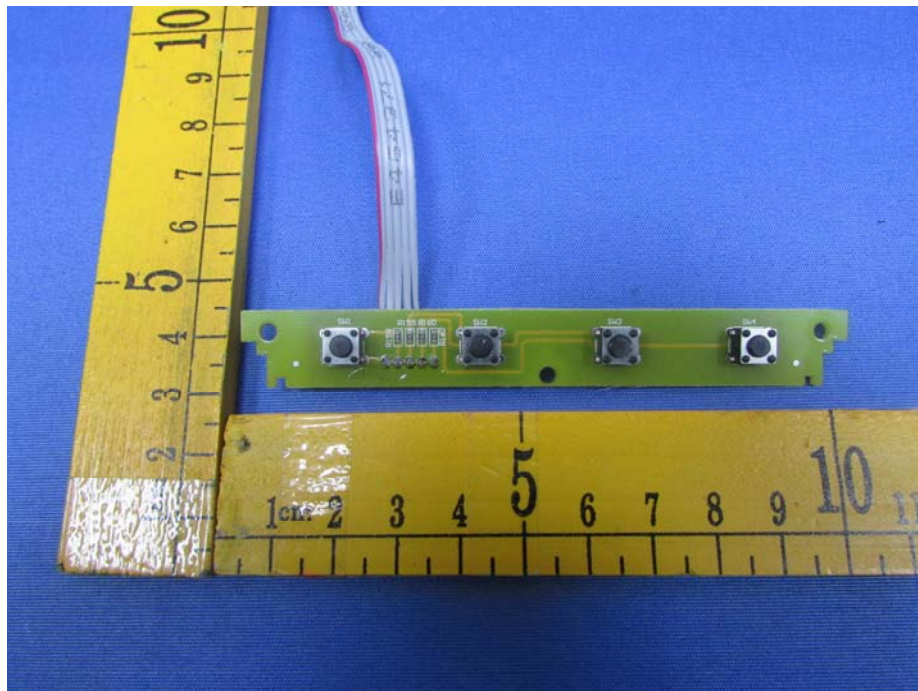


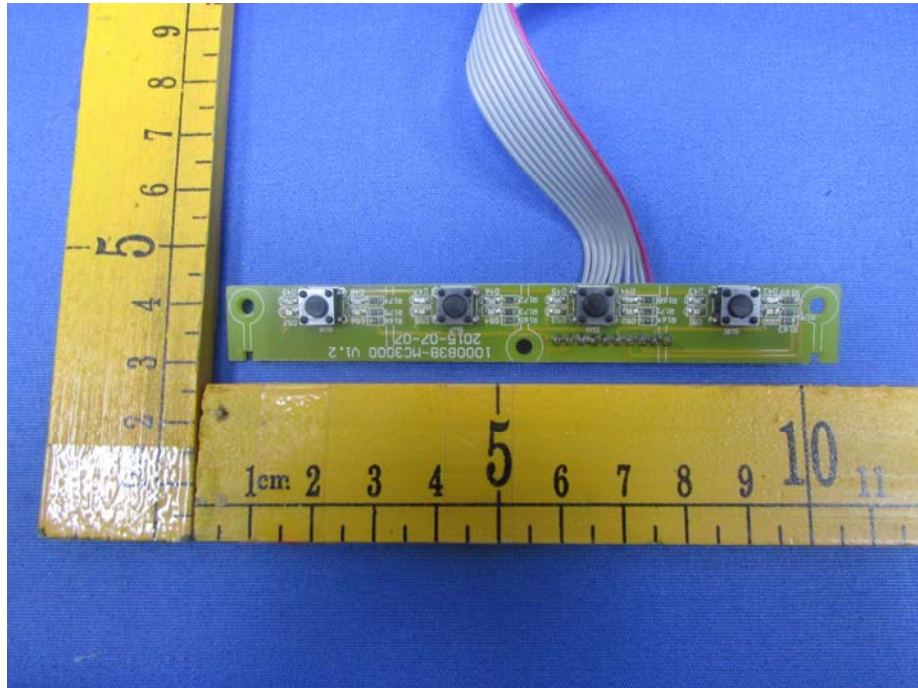












====End of Report====