

06 / Certifications

FCC Instructions:

This product has been tested and found to comply with the limits for a Class B digital device, pursuant to Part 15 of the FCC Rules. These limits are designed to provide reasonable protection against harmful interference in a residential installation. This product generates, uses and can radiate radio frequency energy and, if not installed and used in accordance with the instructions, may cause harmful interference to radio communications. However, there is no guarantee that interference will not occur in a particular installation. If the product does cause harmful interference to radio or television reception, which can be determined by turning the equipment off and on, the user is encouraged to try to correct the interference by one or more of the following measures:

- Reorient or relocate the receiving antenna.
- Increase the separation between the product and receiver.
- Connect the product into an outlet on a circuit different from that to which the receiver is connected.
- Consult the dealer or an experienced radio/TV technician for help.

This device complies with Part 15 of the FCC Rules. Operation is subject to the following two conditions:

- (1) this device may not cause harmful interference, and
- (2) this device must accept any interference received, including interference that may cause undesired operation.

Warning: Changes or modifications not expressly approved by the party responsible for compliance could void the user's authority to operate the product.

FCC Radiation Exposure Statement:

The equipment complies with FCC Radiation exposure limits set forth for uncontrolled environment. This equipment should be installed and operated with minimum distance 20cm between the radiator and your body.

Environmental Conditions

Operating Temperature: 14 °F to 131 °F, (-10 °C to 55 °C) (indoor only)

SkyRC Technology Co., Ltd. declares that this Nutri(FDW020), is in compliance with the essential requirements and other relevant provisions of the Radio Equipment Directive (2014/53/EU).

Environment friendly disposal

You can help protect the environment!

Please remember to respect your local regulations: dispose of nonfunctional electrical equipment with an appropriate waste disposal center.



Manufacturer: SkyRC Technology Co., Ltd.

4, 5, 8 Floor, Building 4, Meitai Science Park, Guanguang Road, Guanlan, Longhua District, Shenzhen, China.

Read all the instructions

When using electrical appliances, basic safety precautions should always be followed, including the following:

- 1.Do not touch hot surfaces. Use handles.
- 2.To protect against electric shock do not immerse cord, plug into water or other liquid.
- 3.Close supervision is necessary when any appliance is used by or near children.
- 4.Unplug from outlet when not in use and before cleaning. Allow to cool before putting on or taking off parts, and before cleaning the appliance.

5.Do not operate any appliance with a damaged cord or plug, should the appliance malfunction, or if it has been damaged in any manner. Return appliance to the nearest authorized service facility for examination, repair or adjustment.

6.The use of the accessory attachments is not recommended by the appliance manufacturer as it may cause injuries.

7.Do not use outdoors.

8.Do not let the cord hang over edge of table or counter, or touch hot surfaces.

9.Do not place on or near a hot gas or electric burner, or in a heated oven.

10.Always attach plug to appliance first, then plug cord in the wall outlet.

11.Do not use the appliance for other than intended use.

12.WARNING: Never leave the appliance unattended whilst in use.

13.Warning: keep the supply cord away from heating tip and metal enclosure while using.

14.This appliance is not intended for use by persons (including children) with reduced physical, sensory or mental capabilities, or lack of experience and knowledge, unless they have been given supervision or instructions concerning use of the appliance by a person responsible for their safety.

15.Children should be supervised to ensure that they do not play with the appliance.

16.If the SUPPLY CORD is damaged, it must be replaced by the manufacturer, its service agent or similarly qualified persons in order to avoid a hazard.

17.WARNING: This tool must be placed on its stand when not in use.

SAVE THESE INSTRUCTIONS.

For the purposes of supply by Adapter, only use the detachable supply unit provided with this appliance:

Manufacturer: SHENZHEN XINSPower TECHNOLOGY CO., LTD.

Input: 100-240V, 50/60Hz, 0.4A

Output: DC 5V 2A

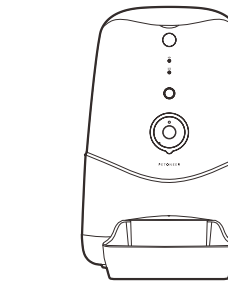
07 / Warranty Terms

Within the period of warranty, if the product fails with no fault of user operations, it will be repaired at Petoneer's expense. The warranty will not cover product failure in examples below:

- 1). Intentional damage to the product by the user or third party
- 2). Failure to operate or maintain the product following the (QIG) Quick Installation Guide Instructions.
- 3). Failure by natural wear and tear including but not limited to scratching, corrosion, oxidation and rusting.
- 4). Failure by non-authorized repair of the product including but not limited to user's own or third-party repairing attempts or modifications.

www.petoneer.com

All Pictures shown in the manual are for illustration purpose only.
Actual product may vary due to product enhancement.

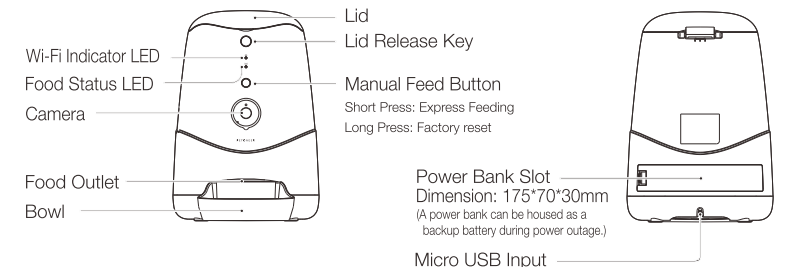


Nutri Vision
Smart Pet Feeder with Camera
User Manual

Model: FDW020

Please read this manual carefully before using.
Keep the manual in a safe place for future reference.

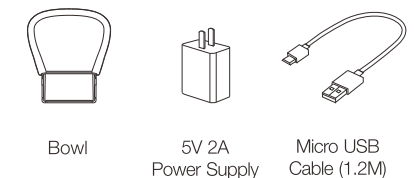
01 / Meet your smart feeder



Food hopper can be lifted for cleaning.

The bowl can be removed for cleaning.

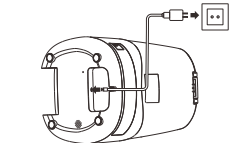
Inside the box



02 / Operations

① Power on the feeder

Unbox and connect the Micro USB cable to the power input port at the bottom of the feeder, then connect A/C adapter to a wall outlet.



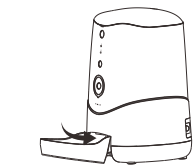
④ Fill hopper with food

Pour food into the hopper and fill it.



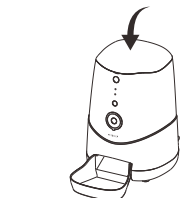
② Bowl mounting

Slide the bowl into the feeder's outlet.



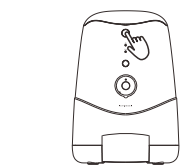
⑤ Close the lid

Press down to close the lid



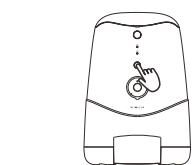
③ Lid releasing

Press the release key to lift up the lid.



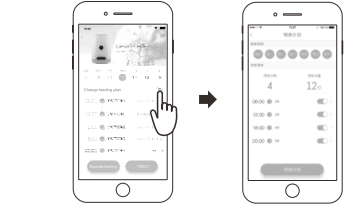
⑥ Manual feeding

Short press the manual feeding button to feed instantly. (Default quantity is one portion, customizable through App.)



⑦ Connect feeder with your phone and schedule your feeding

Download the Petoneer App and connect the feeder to your Wi-Fi to schedule your feeding.



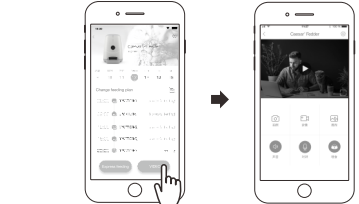
03 / Quick Setup

1. Scan the QR code on the right and download the Petoneer App which is available on App Store and Google Play. Click Sign up to get walked through to create your Petoneer account.

2. Power on and ensure the Wi-Fi Indicator LED is blinking fast reflecting the device is ready for joining the Wi-Fi. Open the Petoneer App and click the '+' button and get walked through the SET-UP steps.

Notice: 1. The feeder doesn't support the 5GHz Wi-Fi, please make sure your Wi-Fi is 2.4G.
2. If the Wi-Fi indicator is not blinking fast after power-on, please long press and hold the manual feed button until the indicator blinks quickly.

⑧ Click the VIDEO button for the camera interface. The FEED button on the interface is for express feeding!



04 / LED Status

LED Status	Specification
Off	The food is more than 20%
Fast blinking red	The food is less than 20%
Steady red	Out of food

Model: FDW020
Power Input: 5V 2A
Capacity: 3.7 L (1.5 Kg)
Size: 9.05x9.68x13.86 inches
 230x246x352 mm
Communication: Wi-Fi (2.4 GHz)
Resolution: 720P
Range: 98.5 feet (30 m)
Net Weight: 2.2 KG
Warranty: 1 Year

Manufacturer: SkyRC Technology Co., Ltd.

Address: 4,5,8/F, Building No.4, Meitai Science Park, Guangang South Road, Guihua, Guanlan, Longhua New District, Shenzhen 518110, China

05 / Precautions

- Please use it in the indoor environment;
- Do not drop anything other than dry food into the food hopper. Otherwise, there is a risk of dysfunction or mistaken feeding;
- To prevent feeder from being hit by pets, it is recommended to place the feeder at the corner or against the wall;
- Please shield or organize the power cord well to prevent the pet from biting the cable and causing dangerous situations such as electric shock;
- Do not disassemble or modify the device yourself;
- This product is only suitable for DRT FOOD, and WET FOOD is prohibited.
- This feeder is suitable for cats or small and medium-size dogs;
- The pet food's shape and density will cause some deviations from the food hopper's capacity and the feeding unit's quantity.
- After each fill-up of the hopper, there may be deviation of two portions at the initial feeding time. It is recommended to calibrate manually! (Click the manual feeding button until food is fed!)