

# TEST REPORT

**Reference No.**..... : WTS16S1269542E  
**FCC ID** ..... : REY-D100V2  
**Applicant**..... : SKYRC Technology Co., Ltd  
**Address**..... : 4,5,8/F, Building No. 6, MeiTai Industry Park, GuanGuang South Road, Guihua, Guanlan, BaoAn District, Shenzhen, China  
**Manufacturer** ..... : The same as above  
**Address**..... : The same as above  
**Product Name**..... : AC/DC Dual Balance Charger/Discharger/Power Supply  
**Model No.**..... : D100 V2  
**Standards**..... : FCC CFR47 Part 15 Section 15.247: 2016  
**Date of Receipt sample** .... : Jan. 03, 2017  
**Date of Test** ..... : Jan. 04 – 21, 2017  
**Date of Issue**..... : Jan. 21, 2017  
**Test Result**..... : **Pass**

Remarks:

The results shown in this test report refer only to the sample(s) tested, this test report cannot be reproduced, except in full, without prior written permission of the company. The report would be invalid without specific stamp of test institute and the signatures of compiler and approver.

**Prepared By:**

**Waltek Services (Shenzhen) Co., Ltd.**

Address: 1/F., Fukangtai Building, West Baima Road, Songgang Street, Baoan District, Shenzhen, Guangdong, China

Tel :+86-755-83551033

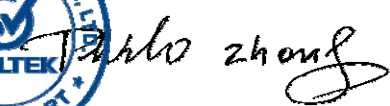
Fax:+86-755-83552400

Compiled by:



Zero Zhou / Test Engineer

Approved by:



Philo Zhong / Manager

## 2 Contents

	<b>Page</b>
<b>1 COVER PAGE</b> .....	<b>1</b>
<b>2 CONTENTS</b> .....	<b>2</b>
<b>3 REVISION HISTORY</b> .....	<b>4</b>
<b>4 GENERAL INFORMATION</b> .....	<b>5</b>
4.1 GENERAL DESCRIPTION OF E.U.T. ....	5
4.2 DETAILS OF E.U.T. ....	5
4.3 CHANNEL LIST.....	5
4.4 TEST MODE.....	5
4.5 TEST FACILITY.....	6
<b>5 EQUIPMENT USED DURING TEST</b> .....	<b>7</b>
5.1 EQUIPMENTS LIST .....	7
5.2 MEASUREMENT UNCERTAINTY .....	8
5.3 TEST EQUIPMENT CALIBRATION .....	8
<b>6 TEST SUMMARY</b> .....	<b>9</b>
<b>7 CONDUCTED EMISSION</b> .....	<b>10</b>
7.1 E.U.T. OPERATION .....	10
7.2 EUT SETUP.....	10
7.3 MEASUREMENT DESCRIPTION .....	10
7.4 CONDUCTED EMISSION TEST RESULT .....	11
<b>8 RADIATED EMISSIONS</b> .....	<b>13</b>
8.1 EUT OPERATION.....	13
8.2 TEST SETUP .....	14
8.3 SPECTRUM ANALYZER SETUP .....	15
8.4 TEST PROCEDURE .....	16
8.5 SUMMARY OF TEST RESULTS .....	17
<b>9 BAND EDGE MEASUREMENT</b> .....	<b>20</b>
9.1 TEST PROCEDURE.....	20
9.2 TEST RESULT .....	21
<b>10 6 DB BANDWIDTH MEASUREMENT</b> .....	<b>22</b>
10.1 TEST PROCEDURE.....	22
10.2 TEST RESULT:.....	22
<b>11 MAXIMUM PEAK OUTPUT POWER</b> .....	<b>24</b>
11.1 TEST PROCEDURE.....	24
11.2 TEST RESULT .....	24
<b>12 POWER SPECTRAL DENSITY</b> .....	<b>26</b>
12.1 TEST PROCEDURE.....	26
12.2 TEST RESULT .....	26
<b>13 ANTENNA REQUIREMENT</b> .....	<b>28</b>
<b>14 RF EXPOSURE</b> .....	<b>29</b>
2.1 REQUIREMENTS.....	29
2.2 THE PROCEDURES / LIMIT.....	29
<b>15 PHOTOGRAPHS – TEST SETUP PHOTOS</b> .....	<b>30</b>
15.1 PHOTOGRAPH – CONDUCTED EMISSION TEST SETUP AT TEST SITE 2# .....	30
15.2 PHOTOGRAPH – RADIATED EMISSION .....	30
<b>16 PHOTOGRAPHS - CONSTRUCTIONAL DETAILS</b> .....	<b>33</b>

16.1	EXTERNAL PHOTOS.....	33
16.2	INTERNAL PHOTOS.....	36

### 3 Revision History

Test report No.	Date of Receipt sample	Date of Test	Date of Issue	Purpose	Comment	Approved
WTS16S1269542E	Jan. 03, 2017	Jan. 03 – 21, 2017	Jan.21, 2017	original	-	Valid

## 4 General Information

### 4.1 General Description of E.U.T.

Product Name:	AC/DC Dual Balance Charger/Discharger/Power Supply
Model No.:	D100 V2
Model Difference:	N/A
Bluetooth Version:	V4.0
Operation Frequency:	2402-2480MHz, 40(BLE) Channels in total
Type of Modulation:	GFSK
The lowest oscillator:	32.768KHz
Antenna Gain:	0 dBi
Antenna installation:	PCB printed Antenna

### 4.2 Details of E.U.T.

Technical Data:	AC Input: 100-240V~ 50/60Hz 150W Max
	DC Input: 11-18V 250W Max
	DC Output: 0.8-26.1V 200W Max
	DC Power Supply Output: 13.8V 100W 10A Max
	Output Current: 0.1-10A ×2
	USB Output: 5V 2.1A

### 4.3 Channel List

BLE mode

Channel No.	Frequency (MHz)	Channel No.	Frequency (MHz)	Channel No.	Frequency (MHz)	Channel No.	Frequency (MHz)
0	2402	1	2404	2	2406	3	2408
4	2410	5	2412	6	2414	7	2416
8	2418	9	2420	10	2422	11	2424
12	2426	13	2428	14	2430	15	2432
16	2434	17	2436	18	2438	19	2440
20	2442	21	2444	22	2446	23	2448
24	2450	25	2452	26	2454	27	2456
28	2458	29	2460	30	2462	31	2464
32	2466	33	2468	34	2470	35	2472
36	2474	37	2476	38	2478	39	2480

### 4.4 Test Mode

All test mode(s) and condition(s) mentioned were considered and evaluated respectively by performing full tests, the worst data were recorded and reported.

Table 1 Tests Carried Out Under FCC part 15.247

Test mode	Low channel	Middle channel	High channel
Transmitting	2402MHz	2440MHz	2480MHz

#### 4.5 Test Facility

The test facility has a test site registered with the following organizations:

- **IC – Registration No.: 7760A**

Waltek Services(Shenzhen) Co., Ltd. Has been registered and fully described in a report filed with the Industry Canada. The acceptance letter from the Industry Canada is maintained in our files. Registration number 7760A, October 15, 2015.

- **FCC Test Site 1#– Registration No.: 880581**

Waltek Services(Shenzhen) Co., Ltd. EMC Laboratory `has been registered and fully described in a report filed with the (FCC) Federal Communications Commission. The acceptance letter from the FCC is maintained in our files. Registration 880581, April 29, 2014.

- **FCC Test Site 2#– Registration No.: 328995**

Waltek Services(Shenzhen) Co., Ltd. EMC Laboratory `has been registered and fully described in a report filed with the (FCC) Federal Communications Commission. The acceptance letter from the FCC is maintained in our files. Registration 328995, December 3, 2014.

## 5 Equipment Used during Test

### 5.1 Equipments List

<b>Conducted Emissions Test Site 1#</b>						
<b>Item</b>	<b>Equipment</b>	<b>Manufacturer</b>	<b>Model No.</b>	<b>Serial No.</b>	<b>Last Calibration Date</b>	<b>Calibration Due Date</b>
1	EMI Test Receiver	R&S	ESCI	100947	Sep.13, 2016	Sep.12, 2017
2	LISN	R&S	ENV216	100115	Sep.13, 2016	Sep.12, 2017
3	Cable	Top	TYPE16(3.5M)	-	Sep.13, 2016	Sep.12, 2017
<b>Conducted Emissions Test Site 2#</b>						
<b>Item</b>	<b>Equipment</b>	<b>Manufacturer</b>	<b>Model No.</b>	<b>Serial No.</b>	<b>Last Calibration Date</b>	<b>Calibration Due Date</b>
1	EMI Test Receiver	R&S	ESCI	101155	Sep.13, 2016	Sep.12, 2017
2	LISN	SCHWARZBECK	NSLK 8128	8128-289	Sep.13, 2016	Sep.12, 2017
3	Limiter	York	MTS-IMP-136	261115-001-0024	Sep.13, 2016	Sep.12, 2017
4	Cable	Laplace	RF300	-	Sep.13, 2016	Sep.12, 2017
<b>3m Semi-anechoic Chamber for Radiation Emissions Test site 1#</b>						
<b>Item</b>	<b>Equipment</b>	<b>Manufacturer</b>	<b>Model No.</b>	<b>Serial No.</b>	<b>Last Calibration Date</b>	<b>Calibration Due Date</b>
1	EMC Analyzer	Agilent	E7405A	MY45114943	Sep.13, 2016	Sep.12, 2017
2	Active Loop Antenna	Beijing Dazhi	ZN30900A	-	Sep.13, 2016	Sep.12, 2017
3	Trilog Broadband Antenna	SCHWARZBECK	VULB9163	336	Apr.19,2016	Apr.18,2017
4	Coaxial Cable (below 1GHz)	Top	TYPE16(13M)	-	Sep.13, 2016	Sep.12, 2017
5	Broad-band Horn Antenna	SCHWARZBECK	BBHA 9120 D	667	Apr.19,2016	Apr.18,2017
6	Broad-band Horn Antenna	SCHWARZBECK	BBHA 9170	335	Apr.19,2016	Apr.18,2017
7	Broadband Preamplifier	COMPLIANCE DIRECTION	PAP-1G18	2004	Mar.17,2016	Mar.16,2017
8	Coaxial Cable (above 1GHz)	Top	1GHz-25GHz	EW02014-7	Apr.10,2016	Apr.09,2017
<b>3m Semi-anechoic Chamber for Radiation Emissions Test site 2#</b>						
<b>Item</b>	<b>Equipment</b>	<b>Manufacturer</b>	<b>Model No.</b>	<b>Serial No</b>	<b>Last Calibration Date</b>	<b>Calibration Due Date</b>
1	Test Receiver	R&S	ESCI	101296	Sep.13, 2016	Sep.12, 2017
2	Trilog Broadband Antenna	SCHWARZBECK	VULB9160	9160-3325	Sep.13, 2016	Sep.12, 2017
3	Amplifier	Compliance pirection systems inc	PAP-0203	22024	Sep.13, 2016	Sep.12, 2017
4	Cable	HUBER+SUHNER	CBL2	525178	Sep.13, 2016	Sep.12, 2017

RF Conducted Testing						
Item	Equipment	Manufacturer	Model No.	Serial No.	Last Calibration Date	Calibration Due Date
1.	EMC Analyzer (9k~26.5GHz)	Agilent	E7405A	MY45114943	Sep.13, 2016	Sep.12, 2017
2.	Spectrum Analyzer (9k-6GHz)	R&S	FSL6	100959	Sep.13, 2016	Sep.12, 2017
3.	Signal Analyzer (9k~26.5GHz)	Agilent	N9010A	MY50520207	Sep.13, 2016	Sep.12, 2017

## 5.2 Measurement Uncertainty

Parameter	Uncertainty
Radio Frequency	$\pm 1 \times 10^{-6}$
RF Power	$\pm 1.0$ dB
RF Power Density	$\pm 2.2$ dB
Radiated Spurious Emissions test	$\pm 5.03$ dB (Bilog antenna 30M~1000MHz)
	$\pm 4.74$ dB (Horn antenna 1000M~25000MHz)
Conducted Spurious Emissions test	$\pm 3.64$ dB (AC mains 150KHz~30MHz)

## 5.3 Test Equipment Calibration

All the test equipments used are valid and calibrated by CEPREI Certification Body that address is No.110 Dongguan Zhuang RD. Guangzhou, P.R.China.



## 6 Test Summary

Test Items	Test Requirement	Result
Radiated Emissions	15.205(a) 15.209(a)	C
Conducted Emissions	15.207(a)	C
Bandwidth	15.247(a)(2)	C
Maximum Peak Output Power	15.247(b)(3),(4)	C
Power Spectral Density	15.247(e)	C
Band Edge	15.247(d)	C
Antenna Requirement	15.203	C
Maximum Permissible Exposure (Exposure of Humans to RF Fields)	1.1307(b)(1)	C

Note: C=Compliance; NC=Not Compliance; NT=Not Tested; N/A=Not Applicable.

## 7 Conducted Emission

Test Requirement:	FCC CFR 47 Part 15 Section 15.207
Test Method:	ANSI C63.10:2013&ANSI C63.4:2014
Test Result:	PASS
Frequency Range:	150kHz to 30MHz
Class/Severity:	Class B
Limit:	66-56 dB $\mu$ V between 0.15MHz & 0.5MHz 56 dB $\mu$ V between 0.5MHz & 5MHz 60 dB $\mu$ V between 5MHz & 30MHz
Detector:	Peak for pre-scan (9kHz Resolution Bandwidth)

### 7.1 E.U.T. Operation

Operating Environment :

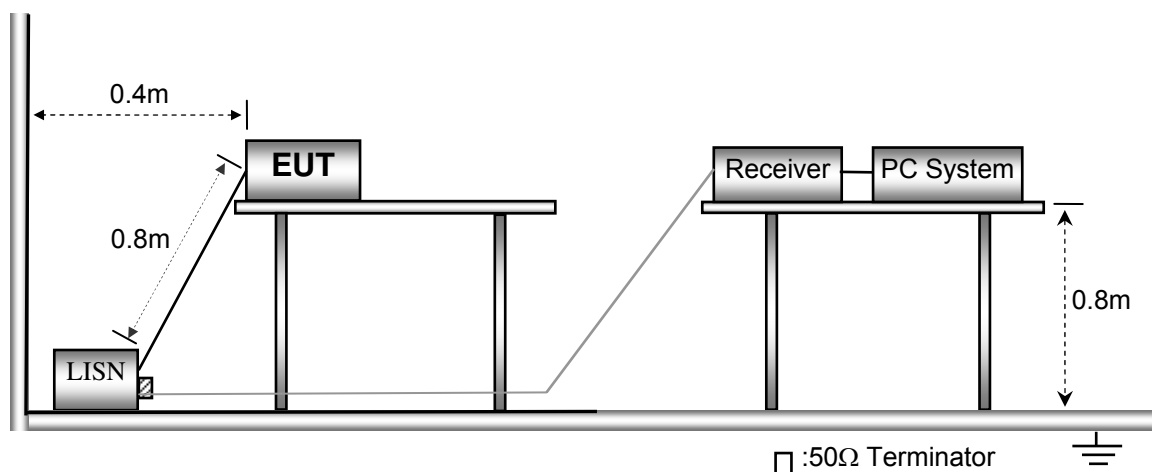
Temperature:	25.5 °C
Humidity:	51 % RH
Atmospheric Pressure:	101.2kPa

EUT Operation :

The test was performed in transmitting mode, the test data were shown in the report.

### 7.2 EUT Setup

The conducted emission tests were performed using the setup accordance with the ANSI C63.10:2013.

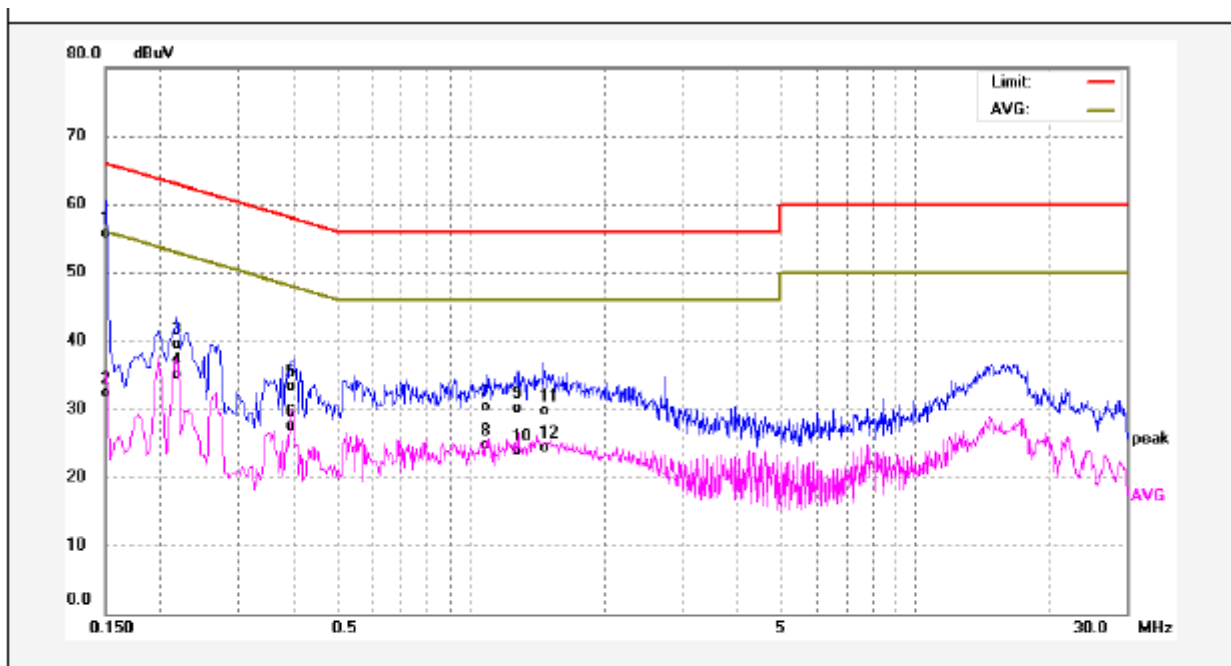


### 7.3 Measurement Description

The maximised peak emissions from the EUT was scanned and measured for both the Live and Neutral Lines. Quasi-peak & average measurements were performed if peak emissions were within 6dB of the average limit line.

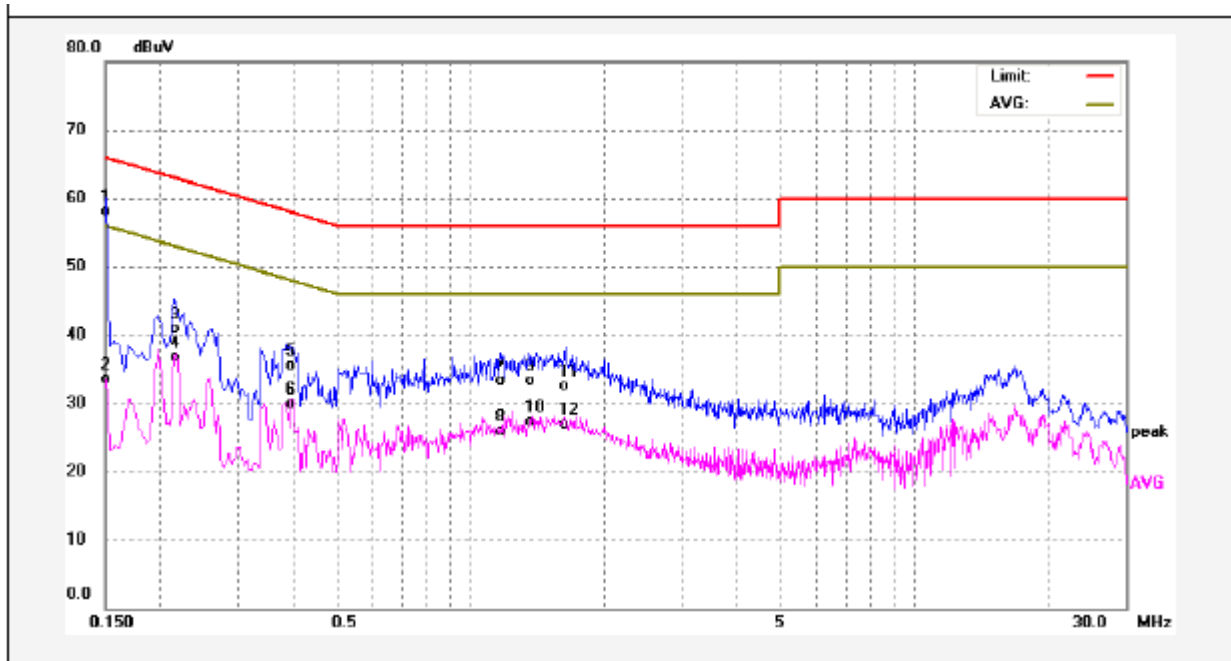
### 7.4 Conducted Emission Test Result

Live line:



No.	Freq. (MHz)	Reading (dBuV)	Factor (dB)	Result (dBuV)	Limit dBuV	Margin (dB)	Detector	Remark
1	0.1500	45.74	10.06	55.80	65.99	-10.19	QP	
2	0.1500	22.18	10.06	32.24	55.99	-23.75	AVG	
3	0.2180	29.50	9.92	39.42	62.89	-23.47	QP	
4	0.2180	25.17	9.92	35.09	52.89	-17.80	AVG	
5	0.3980	23.21	10.03	33.24	57.89	-24.65	QP	
6	0.3980	17.56	10.03	27.59	47.89	-20.30	AVG	
7	1.0820	20.13	10.08	30.21	56.00	-25.79	QP	
8	1.0820	14.61	10.08	24.69	46.00	-21.31	AVG	
9	1.2860	20.03	10.07	30.10	56.00	-25.90	QP	
10	1.2860	13.75	10.07	23.82	46.00	-22.18	AVG	
11	1.4620	19.61	10.14	29.75	56.00	-26.25	QP	
12	1.4620	14.21	10.14	24.35	46.00	-21.65	AVG	

Neutral line:



No.	Freq. (MHz)	Reading (dBuV)	Factor (dB)	Result (dBuV)	Limit dBuV	Margin (dB)	Detector	Remark
1	0.1500	48.08	10.06	58.14	65.99	-7.85	QP	
2	0.1500	23.44	10.06	33.50	55.99	-22.49	AVG	
3	0.2140	30.90	9.91	40.81	63.04	-22.23	QP	
4	0.2140	26.81	9.91	36.72	53.04	-16.32	AVG	
5	0.3940	25.51	10.03	35.54	57.98	-22.44	QP	
6	0.3940	19.85	10.03	29.88	47.98	-18.10	AVG	
7	1.1660	23.17	10.05	33.22	56.00	-22.78	QP	
8	1.1660	15.87	10.05	25.92	46.00	-20.08	AVG	
9	1.3580	23.21	10.10	33.31	56.00	-22.69	QP	
10	1.3580	17.20	10.10	27.30	46.00	-18.70	AVG	
11	1.6420	22.36	10.16	32.52	56.00	-23.48	QP	
12	1.6420	16.81	10.16	26.97	46.00	-19.03	AVG	

## 8 Radiated Emissions

Test Requirement: FCC CFR47 Part 15 Section 15.209 & 15.247

Test Method: 558074 D01 DTS Meas Guidance v03r05 & ANSI C63.10:2013

Test Result: PASS

Measurement Distance: 3m

Limit:

Frequency (MHz)	Field Strength		Field Strength Limit at 3m Measurement Dist	
	uV/m	Distance (m)	uV/m	dBuV/m
0.009 ~ 0.490	2400/F(kHz)	300	10000 * 2400/F(kHz)	$20\log^{(2400/F(kHz))} + 80$
0.490 ~ 1.705	24000/F(kHz)	30	100 * 24000/F(kHz)	$20\log^{(24000/F(kHz))} + 40$
1.705 ~ 30	30	30	100 * 30	$20\log^{(30)} + 40$
30 ~ 88	100	3	100	$20\log^{(100)}$
88 ~ 216	150	3	150	$20\log^{(150)}$
216 ~ 960	200	3	200	$20\log^{(200)}$
Above 960	500	3	500	$20\log^{(500)}$

### 8.1 EUT Operation

Operating Environment:

Temperature: 25.5 °C

Humidity: 51 % RH

Atmospheric Pressure: 1016 mbar

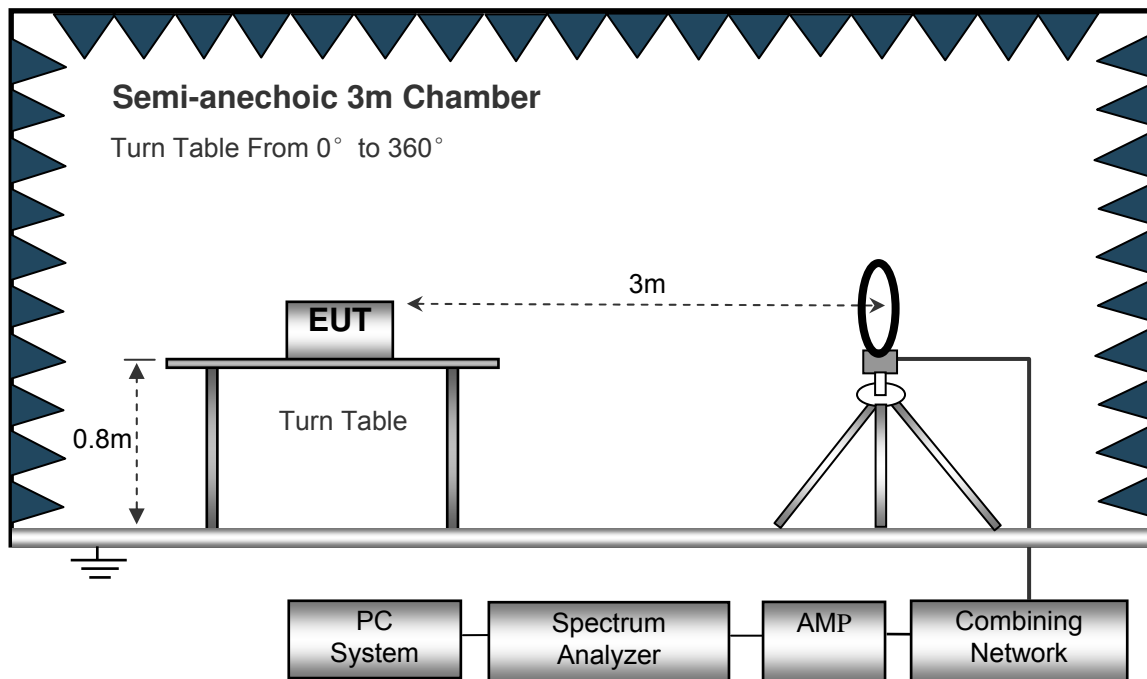
EUT Operation:

The test was performed in transmitting mode, the test data were shown in the report.

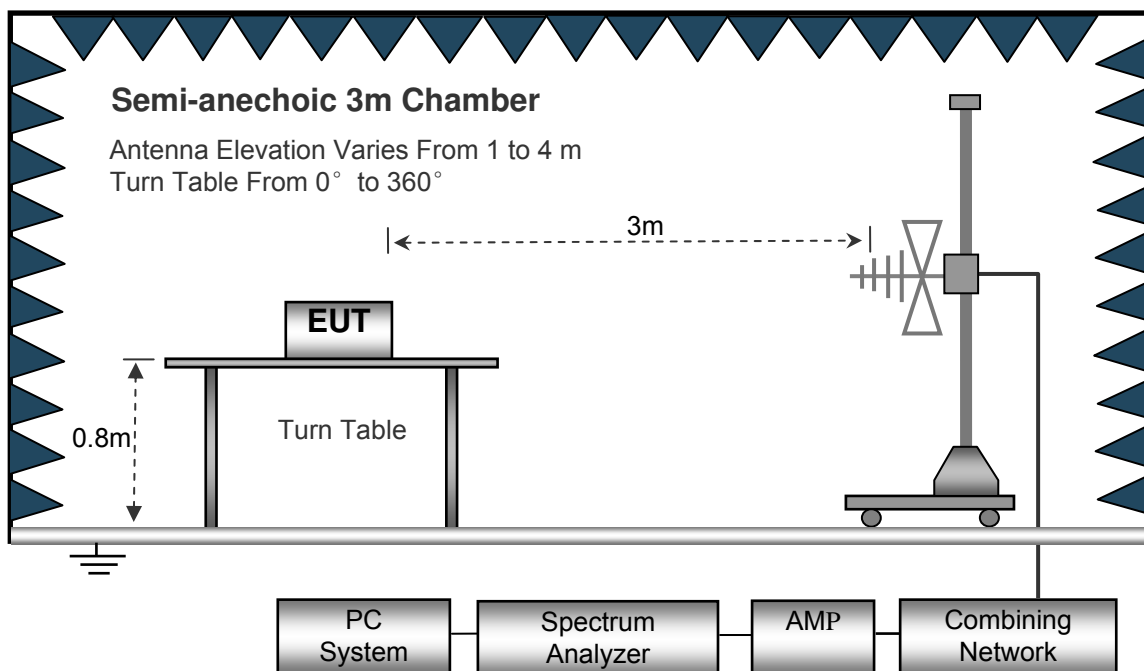
### 8.2 Test Setup

The radiated emission tests were performed in the 3m Semi- Anechoic Chamber test site, using the setup accordance with the ANSI C63.10: 2013.

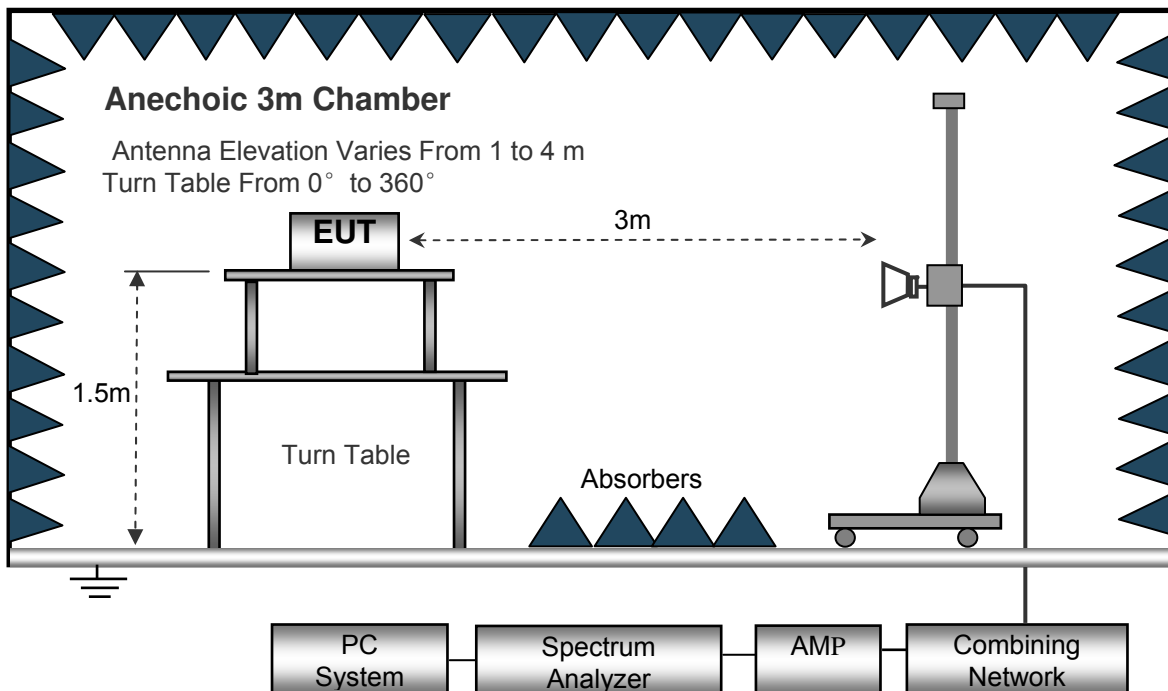
The test setup for emission measurement below 30MHz.



The test setup for emission measurement from 30 MHz to 1 GHz.



The test setup for emission measurement above 1 GHz.



### 8.3 Spectrum Analyzer Setup

Below 30MHz

- Sweep Speed ..... Auto
- IF Bandwidth..... 10kHz
- Video Bandwidth..... 10kHz
- Resolution Bandwidth..... 10kHz

30MHz ~ 1GHz

- Sweep Speed ..... Auto
- Detector ..... PK
- Resolution Bandwidth..... 100kHz
- Video Bandwidth..... 300kHz

Above 1GHz

- Sweep Speed ..... Auto
- Detector ..... PK
- Resolution Bandwidth..... 1MHz
- Video Bandwidth..... 3MHz
- Detector ..... Ave.
- Resolution Bandwidth..... 1MHz
- Video Bandwidth..... 10Hz

## 8.4 Test Procedure

1. The EUT is placed on a turntable. For below 1GHz, the EUT is 0.8m above ground plane; For above 1GHz, the EUT is 1.5m above ground plane.
2. The turntable shall be rotated for 360 degrees to determine the position of maximum emission level.
3. EUT is set 3m away from the receiving antenna, which is moved from 1m to 4m to find out the maximum emissions. The spectrum was investigated from the lowest radio frequency signal generated in the device, without going below 9 kHz, up to the tenth harmonic of the highest fundamental frequency or to 40 GHz, whichever is lower.
4. Maximum procedure was performed on the six highest emissions to ensure EUT compliance.
5. And also, each emission was to be maximized by changing the polarization of receiving antenna both horizontal and vertical.
6. Repeat above procedures until the measurements for all frequencies are complete.
7. The radiation measurements are tested under 3-axes(X,Y,Z) position(X denotes lying on the table, Y denotes side stand and Z denotes vertical stand), After pre-test, It was found that the worse radiation emission was get at the X position. So the data shown was the X position only.



## 8.5 Summary of Test Results

### Test Frequency: 32.768KHz~ 30MHz

The measurements were more than 20 dB below the limit and not reported

### Test Frequency: 30MHz ~ 18GHz

Frequency	Receiver Reading	Detector	Turn table Angle	RX Antenna		Corrected Factor	Corrected Amplitude	Limit	Margin
				Height	Polar				
(MHz)	(dB $\mu$ V)	(PK/QP/Ave)	Degree	(m)	(H/V)	(dB)	(dB $\mu$ V/m)	(dB $\mu$ V/m)	(dB)
GFSK (BLE) Low Channel									
255.38	14.92	QP	215	1.7	H	10.59	25.51	43.53	-18.02
255.38	15.09	QP	332	1.4	V	10.59	25.68	43.53	-17.85
4804.00	47.87	PK	310	1.1	V	-1.08	46.79	74.00	-27.21
4804.00	44.27	Ave	310	1.1	V	-1.08	43.19	54.00	-10.81
7206.00	50.57	PK	11	1.6	H	1.34	51.91	74.00	-22.09
7206.00	43.21	Ave	11	1.6	H	1.34	44.55	54.00	-9.45
2315.93	47.44	PK	57	1.4	V	-13.20	34.24	74.00	-39.76
2315.93	39.90	Ave	57	1.4	V	-13.20	26.70	54.00	-27.30
2381.52	49.58	PK	140	1.9	H	-13.12	36.46	74.00	-37.54
2381.52	36.85	Ave	140	1.9	H	-13.12	23.73	54.00	-30.27
2485.86	49.30	PK	89	1.1	V	-13.02	36.28	74.00	-37.72
2485.86	37.52	Ave	89	1.1	V	-13.02	24.50	54.00	-29.50

Frequency	Receiver Reading	Detector	Turn table Angle	RX Antenna		Corrected Factor	Corrected Amplitude	Limit	Margin
				Height	Polar				
(MHz)	(dB $\mu$ V)	(PK/QP/Ave)	Degree	(m)	(H/V)	(dB)	(dB $\mu$ V/m)	(dB $\mu$ V/m)	(dB)
GFSK (BLE) Middle Channel									
255.38	15.01	QP	193	1.7	H	10.59	25.60	43.53	-17.93
255.38	16.12	QP	196	1.3	V	10.59	26.71	43.53	-16.82
4882.00	44.97	PK	209	1.3	V	-0.62	44.35	74.00	-29.65
4882.00	42.33	Ave	209	1.3	V	-0.62	41.71	54.00	-12.29
7323.00	50.39	PK	58	1.1	H	2.21	52.60	74.00	-21.40
7323.00	41.87	Ave	58	1.1	H	2.21	44.08	54.00	-9.92
2341.89	45.13	PK	149	1.4	V	-13.19	31.94	74.00	-42.06
2341.89	37.48	Ave	149	1.4	V	-13.19	24.29	54.00	-29.71
2367.37	47.62	PK	35	1.6	H	-13.14	34.48	74.00	-39.52
2367.37	38.99	Ave	35	1.6	H	-13.14	25.85	54.00	-28.15
2486.94	47.45	PK	69	1.8	V	-13.08	34.37	74.00	-39.63
2486.94	38.28	Ave	69	1.8	V	-13.08	25.20	54.00	-28.80

Frequency	Receiver Reading	Detector	Turn table Angle	RX Antenna		Corrected Factor	Corrected Amplitude	Limit	Margin
				Height	Polar				
(MHz)	(dB $\mu$ V)	(PK/QP/Ave)	Degree	(m)	(H/V)	(dB)	(dB $\mu$ V/m)	(dB $\mu$ V/m)	(dB)
GFSK (BLE) High Channel									
255.38	22.56	QP	265	1.6	H	10.59	33.15	43.53	-10.38
255.38	19.48	QP	268	1.6	V	10.59	30.07	43.53	-13.46
4960.00	50.79	PK	70	1.7	V	-0.24	50.55	74.00	-23.45
4960.00	42.35	Ave	70	1.7	V	-0.24	42.11	54.00	-11.89
7440.00	51.41	PK	291	1.6	H	2.84	54.25	74.00	-19.75
7440.00	41.22	Ave	291	1.6	H	2.84	44.06	54.00	-9.94
2320.66	45.66	PK	166	1.9	V	-13.19	32.47	74.00	-41.53
2320.66	39.11	Ave	166	1.9	V	-13.19	25.92	54.00	-28.08
2387.88	44.21	PK	120	1.3	H	-13.14	31.07	74.00	-42.93
2387.88	37.34	Ave	120	1.3	H	-13.14	24.20	54.00	-29.80
2485.97	44.54	PK	271	1.6	V	-13.08	31.46	74.00	-42.54
2485.97	36.24	Ave	271	1.6	V	-13.08	23.16	54.00	-30.84

**Test Frequency: 18GHz~25GHz**

The measurements were more than 20 dB below the limit and not reported.

## 9 Band Edge Measurement

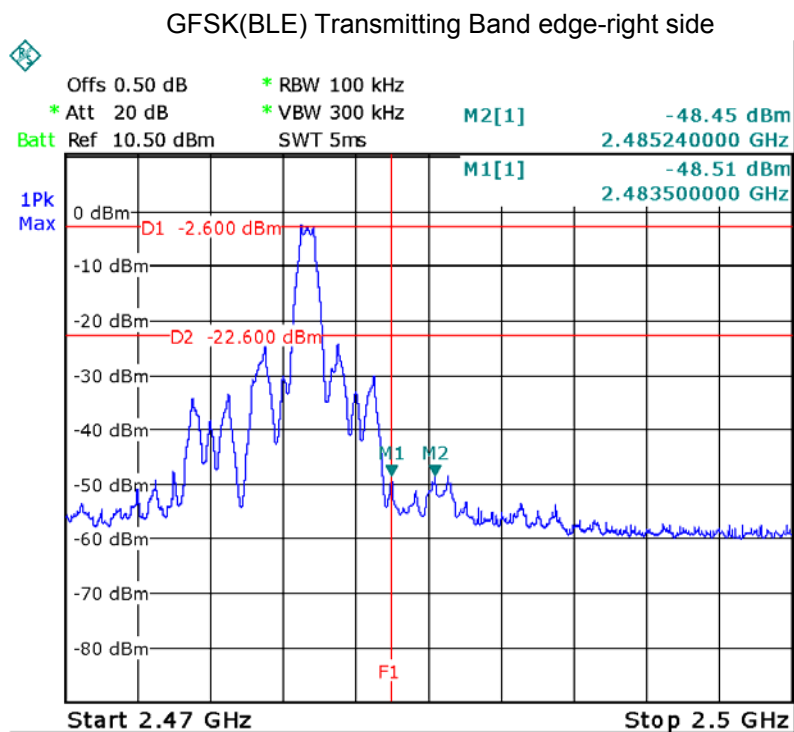
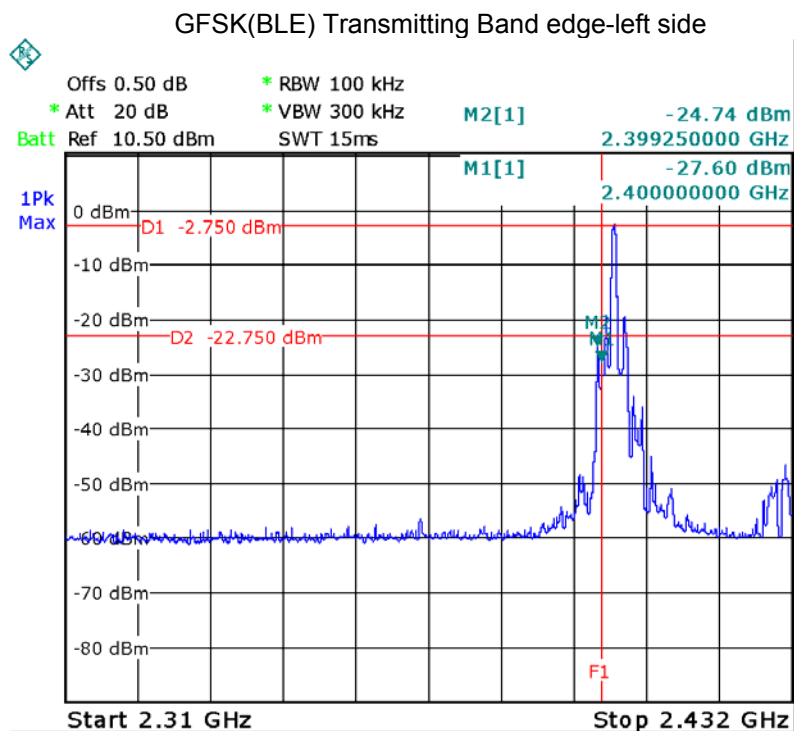
Test Requirement:	Section 15.247(d) In addition, radiated emissions which fall in the restricted bands. as defined in Section 15.205(a), must also comply with the radiated emission limits specified in Section 15.209(a) and 15.205(c).
Test Method:	558074 D01 DTS Meas Guidance v03r05
Test Mode:	Transmitting

### 9.1 Test Produce

1. Check the calibration of the measuring instrument using either an internal calibrator or a known signal from an external generator.
2. Position the EUT without connection to measurement instrument. Turn on the EUT and connect its antenna terminal to measurement instrument via a low loss cable. Then set it to any one measured frequency within its operating range, and make sure the instrument is operated in its linear range.
3. Set the spectrum analyzer: RBW = 100kHz, VBW = 300kHz, Sweep = auto  
Detector function = peak, Trace = max hold
4. Measure the highest amplitude appearing on spectral display and set it as a reference level. Plot the graph with marking the highest point and edge frequency.
5. Repeat above procedures until all measured frequencies were complete.

### 9.2 Test Result

#### Test plots



### 10 6 DB Bandwidth Measurement

Test Requirement: FCC CFR47 Part 15 Section 15.247

Test Method: 558074 D01 DTS Meas Guidance v03r05

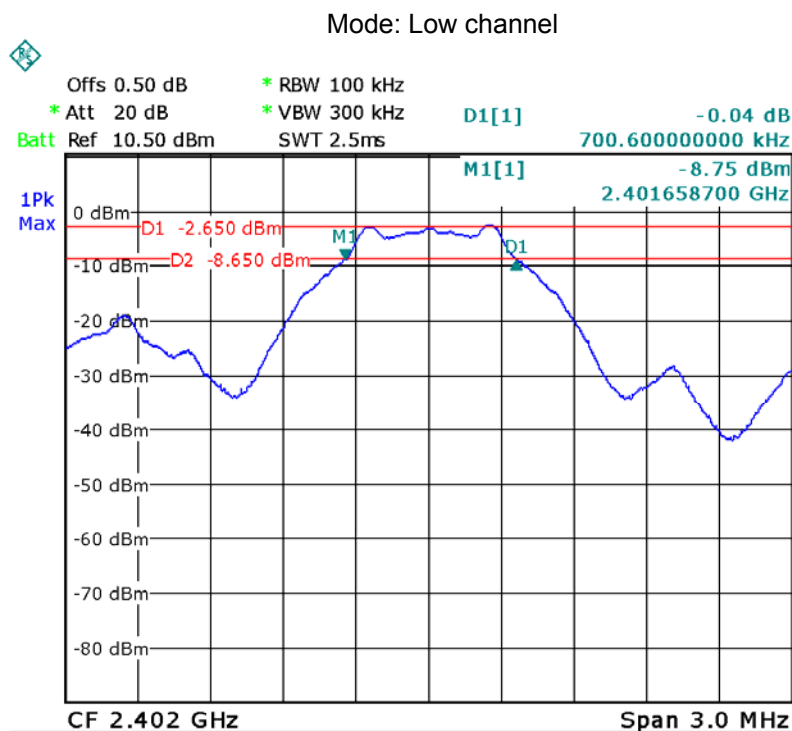
#### 10.1 Test Procedure

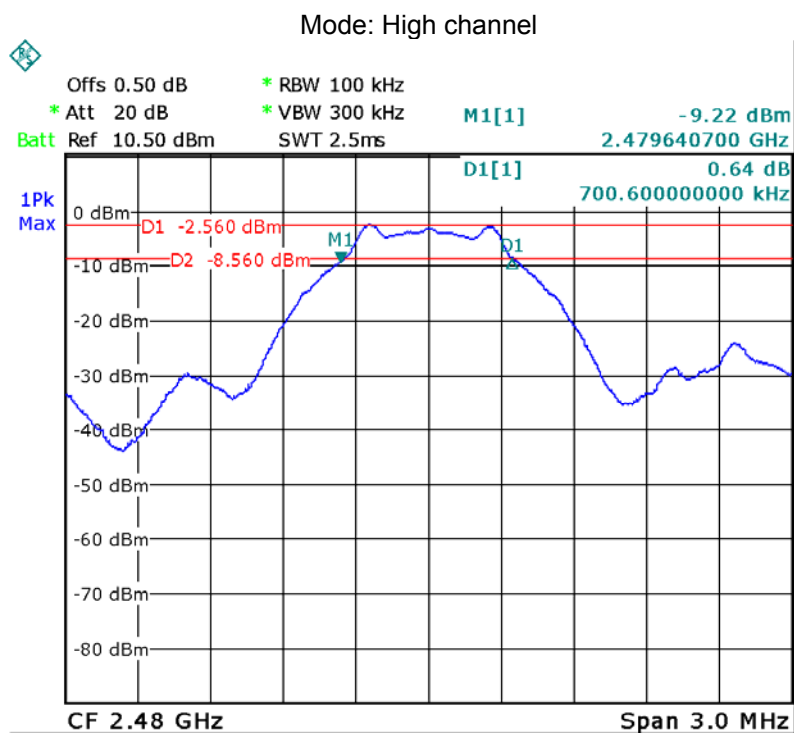
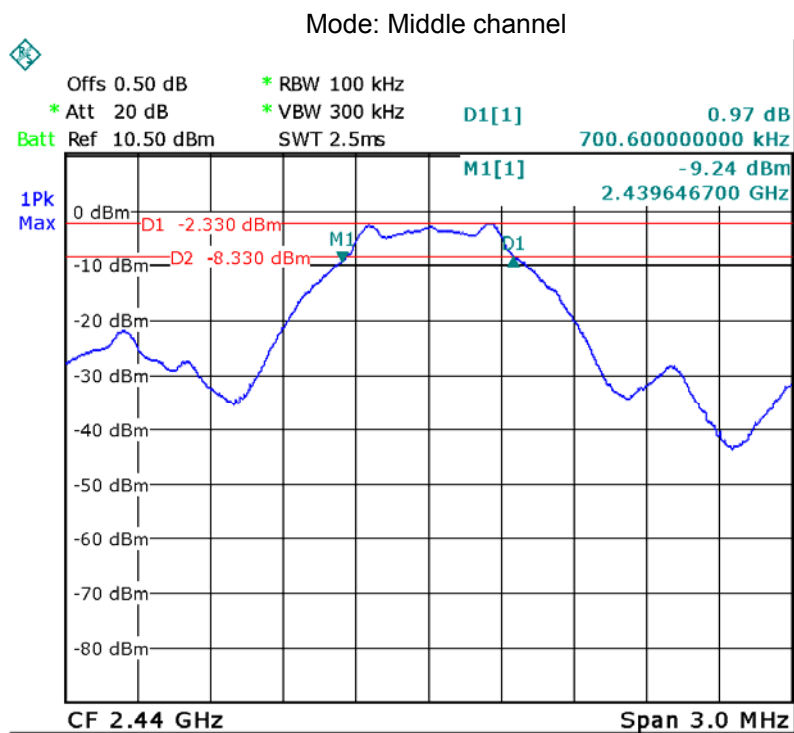
1. Remove the antenna from the EUT and then connect a low RF cable from the antenna port to the spectrum;
2. Set the spectrum analyzer: RBW = 100kHz, VBW = 300kHz

#### 10.2 Test Result:

Operation mode	6dB Bandwidth (KHz)
Low channel	700.600
Middle channel	700.600
High channel	700.600

Test result plot as follows:





## 11 Maximum Peak Output Power

Test Requirement: FCC CFR47 Part 15 Section 15.247

Test Method: 558074 D01 DTS Meas Guidance v03r05

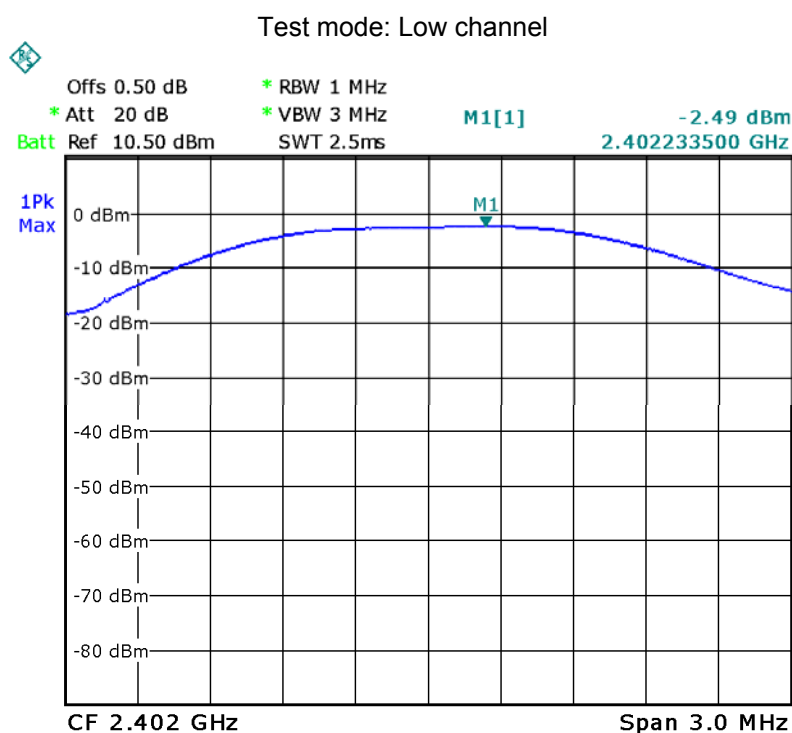
### 11.1 Test Procedure

558074 D01 DTS Meas Guidance v03r05 section 9.1.1

1. Remove the antenna from the EUT and then connect a low RF cable from the antenna port to the spectrum.
2. Set the spectrum analyzer: RBW = 1MHz. VBW = 3MHz. Sweep = auto; Detector Function = Peak, Set the span to fully encompass the DTS bandwidth.
3. Keep the EUT in transmitting at lowest, medium and highest channel individually. Record the max value.

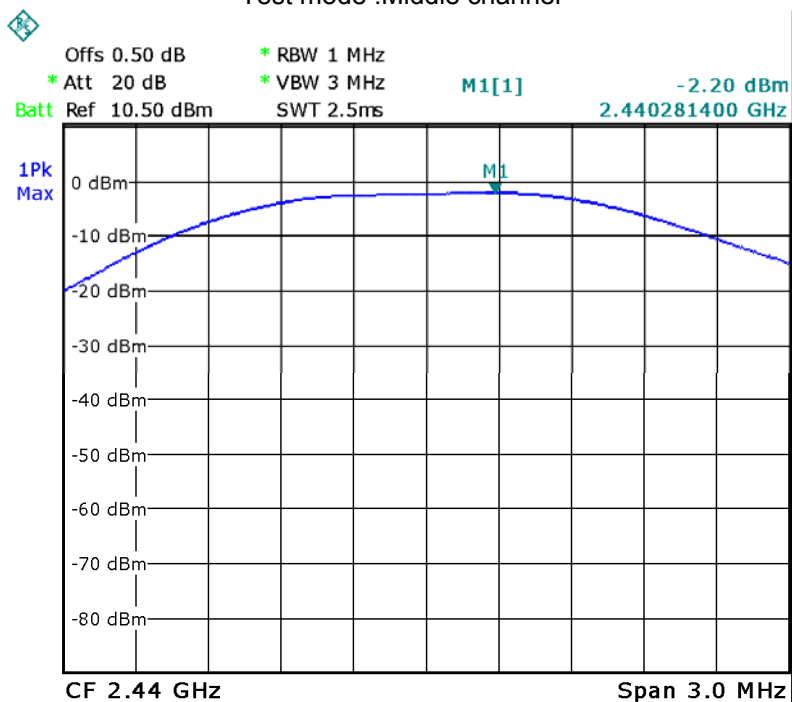
### 11.2 Test Result

Maximum Peak Output Power (dBm)		
Low channel	Middle channel	High channel
-2.49	-2.20	-2.44
Limit : 1W/30dBm		

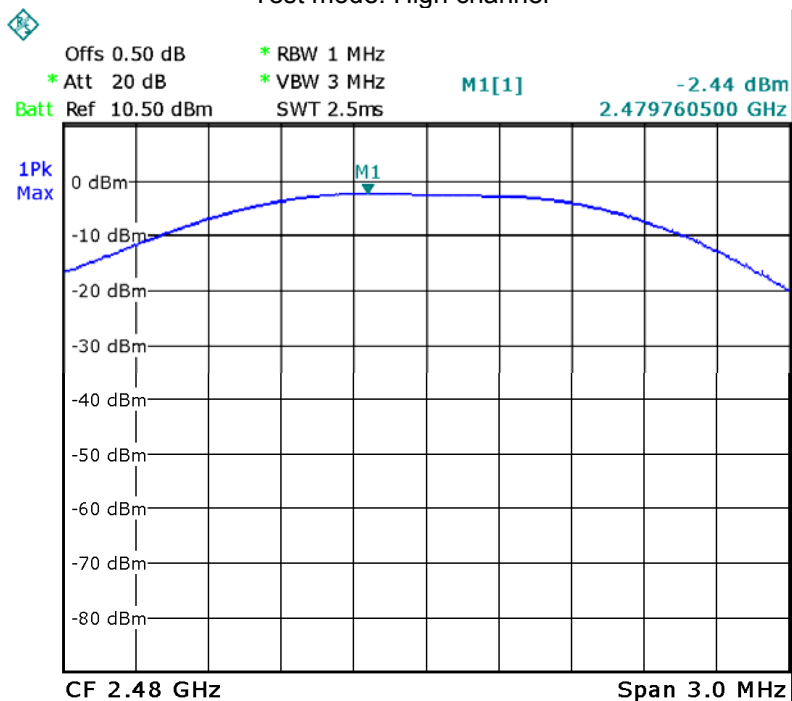




Test mode :Middle channel



Test mode: High channel



## 12 Power Spectral density

Test Requirement: FCC CFR47 Part 15 Section 15.247

Test Method: 558074 D01 DTS Meas Guidance v03r05

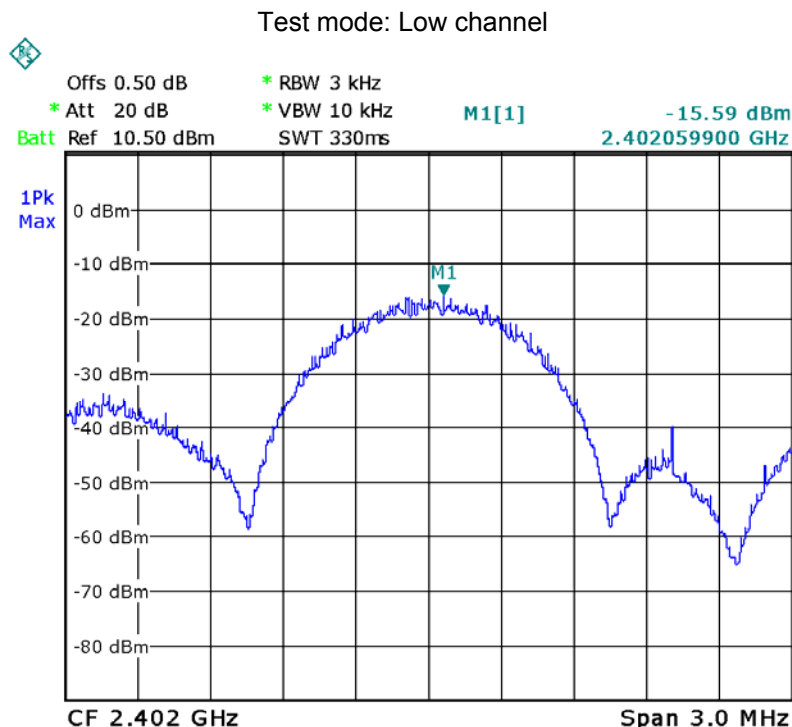
### 12.1 Test Procedure

558074 D01 DTS Meas Guidance v03r05 section 10.2

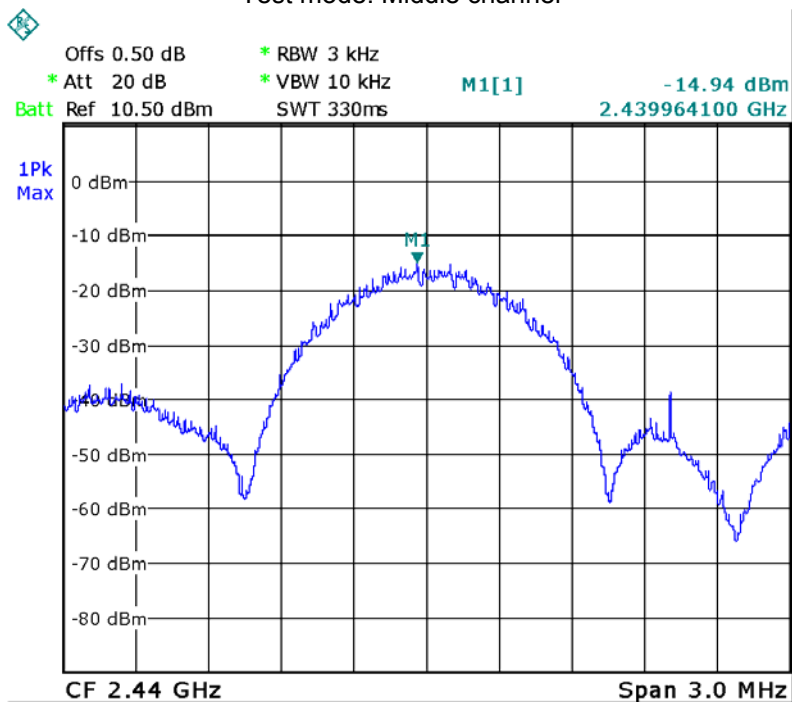
1. Remove the antenna from the EUT and then connect a low RF cable from the antenna port to the spectrum.
2. Set the spectrum analyzer: RBW = 3kHz. VBW = 10kHz , Span = 1.5 times the DTS channel bandwidth(6 dB bandwidth). Sweep = auto; Detector Function = Peak. Trace = Max hold.
3. Allow the trace to stabilize. Use the marker-delta function to determine the separation between the peaks of the adjacent channels. The limit is specified in one of the subparagraphs of this Section Submit this plot.

### 12.2 Test Result

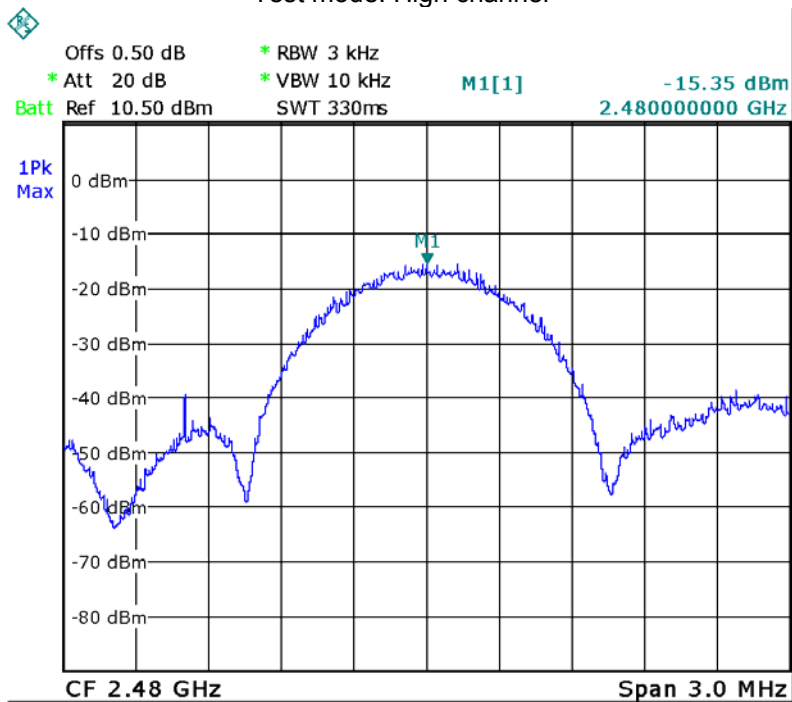
Power Spectral Density		
Low channel	Middle channel	High channel
-15.59	-14.94	-15.35
Limit : 8dBm per 3kHz		



Test mode: Middle channel



Test mode: High channel



### 13 Antenna Requirement

An intentional radiator shall be designed to ensure that no antenna other than that furnished by the responsible party shall be used with the device. The use of a permanently attached antenna or of an antenna that uses a unique coupling to the intentional radiator shall be considered sufficient to comply with the provisions of this section. The manufacturer may design the unit so that a broken antenna can be replaced by the user, but the use of a standard antenna jack or electrical connector is prohibited. This requirement does not apply to carrier current devices or to devices operated under the provisions of §15.211, §15.213, §15.217, §15.219, or §15.221. Further, this requirement does not apply to intentional radiators that must be professionally installed, such as perimeter protection systems and some field disturbance sensors, or to other intentional radiators which, in accordance with §15.31(d), must be measured at the installation site. However, the installer shall be responsible for ensuring that the proper antenna is employed so that the limits in this part are not exceeded.

For intentional device, according to FCC 47 CFR Section 15.203, an intentional radiator shall be designed to ensure that no antenna other than that furnished by the responsible party shall be used with the device.

Result:

The EUT has one PCB printed antenna, the gain is 0dBi. meets the requirements of FCC 15.203.

## 14 RF Exposure

Test Requirement: FCC Part 1.1307

Evaluation Method FCC Part2.1093 & KDB 447498 D01 General RF Exposure Guidance v06

### 2.1 Requirements

1) The 1-g and 10-g SAR test exclusion thresholds for 100 MHz to 6 GHz at test separation distances  $\leq 50$  mm are determined by:

$[(\text{max. power of channel, including tune-up tolerance, mW})/(\text{min. test separation distance, mm})] \cdot [\sqrt{f(\text{GHz})}] \leq 3.0$  for 1-g SAR and  $\leq 7.5$  for 10-g extremity SAR where

1.  $f(\text{GHz})$  is the RF channel transmit frequency in GHz
2. Power and distance are rounded to the nearest mW and mm before calculation
3. The result is rounded to one decimal place for comparison

The test exclusions are applicable only when the minimum test separation distance is  $\leq 50$  mm and for transmission frequencies between 100 MHz and 6 GHz. When the minimum test separation distance is  $< 5$  mm, a distance of 5 mm is applied to determine SAR test exclusion.

### 2.2 The procedures / limit

Conducted Peak power(dBm)	Conducted Peak power(mW)	Source-based time-averaged maximum conducted output power(mW)	Minimum test separation distance required for the exposure conditions (mm)	SAR Test Exclusion Thresholds(mW)	Result
-2.20	0.6026	0.6026	200	10	Compliance

Remark: Max. duty factor is 100%

Calculation formula: Source-based time-averaged maximum conducted output power(mW) =Conducted peak power(mW)\*Duty factor

For frequency in 2.402GHz: SAR Test Exclusion Thresholds $\leq 3.0 / [\sqrt{f(\text{GHz})}]$  \*(min. test separation distance, mm)= $3.0/(\sqrt{2.402}) *5=9.679$  mW $\approx 10$ mW

For frequency in 2.480GHz: SAR Test Exclusion Thresholds $\leq 3.0 / [\sqrt{f(\text{GHz})}]$  \*(min. test separation distance, mm)= $3.0/(\sqrt{2.480}) *5=9.525$  mW $\approx 10$ mW

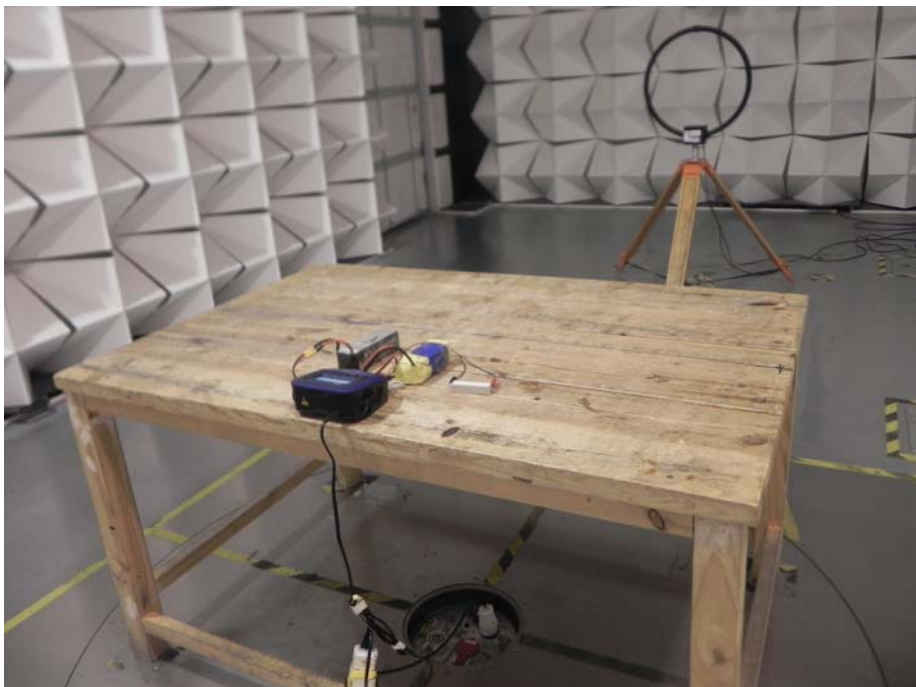
## 15 Photographs – Test Setup Photos

### 15.1 Photograph – Conducted Emission Test Setup at Test Site 2#

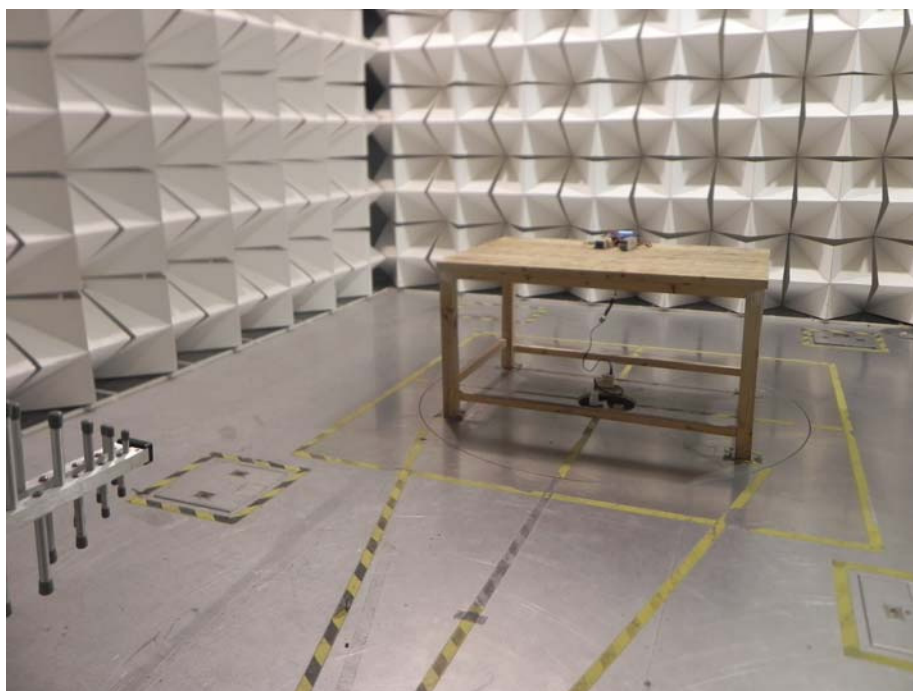
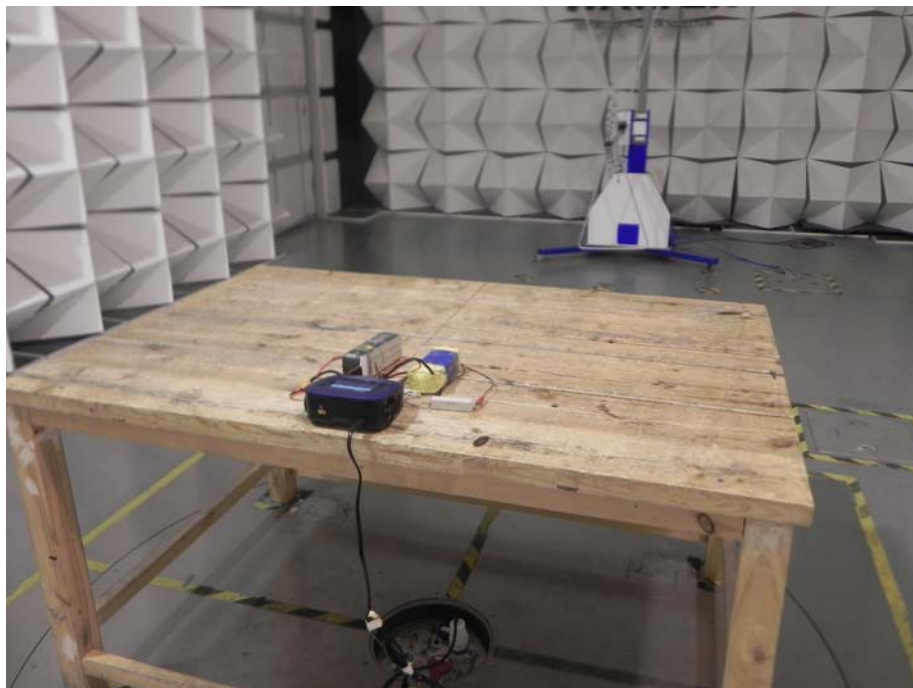


### 15.2 Photograph – Radiated Emission

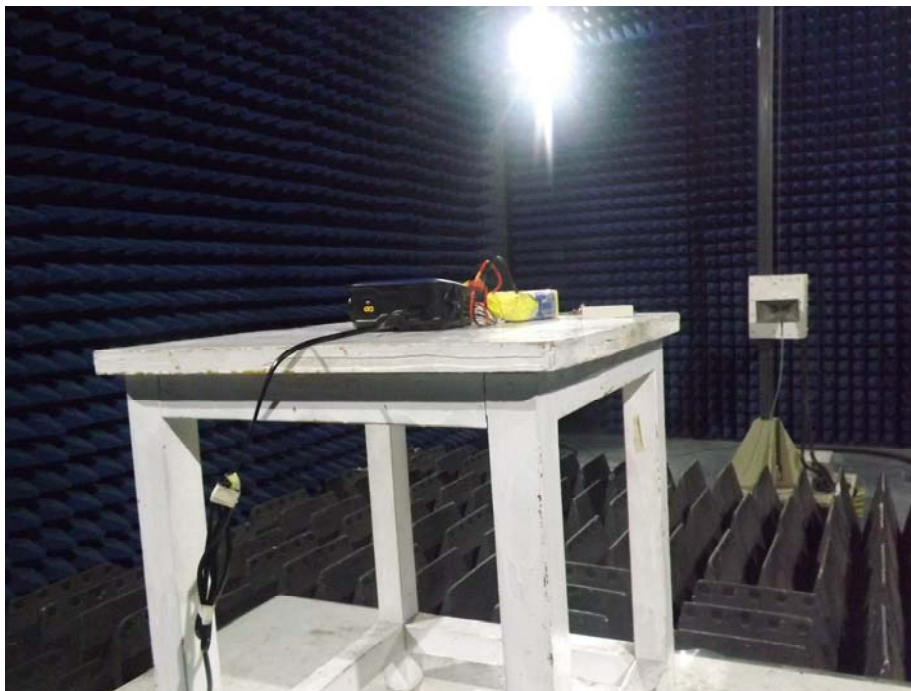
Test frequency 32.768KHz to 30MHz Test Site 2#



Test frequency from 30MHz to 1GHz Test Site 2#



Test frequency above 1GHz Test Site 1#





## 16 Photographs - Constructional Details

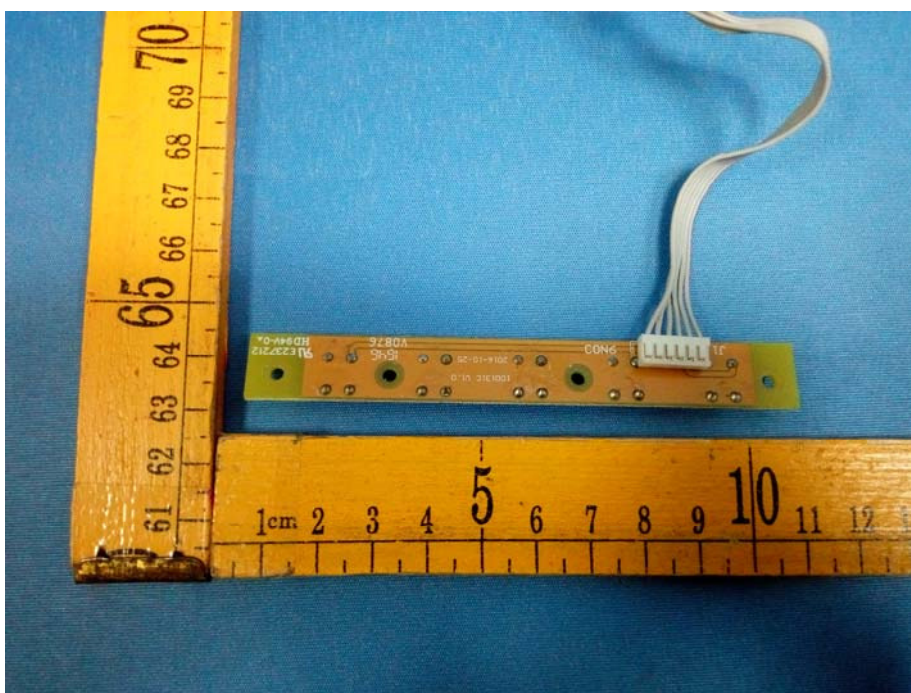
### 16.1 External Photos

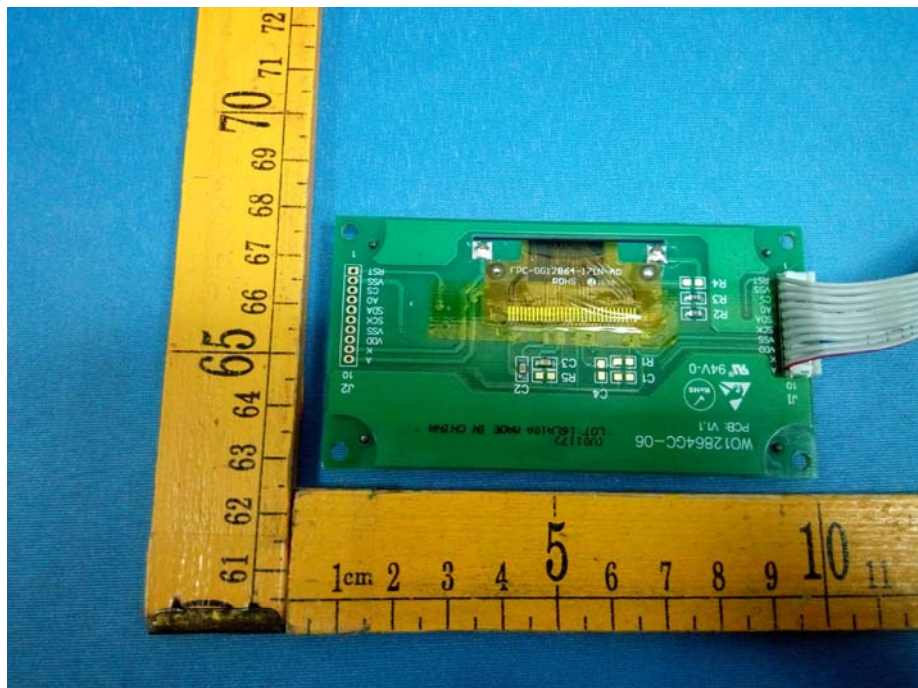
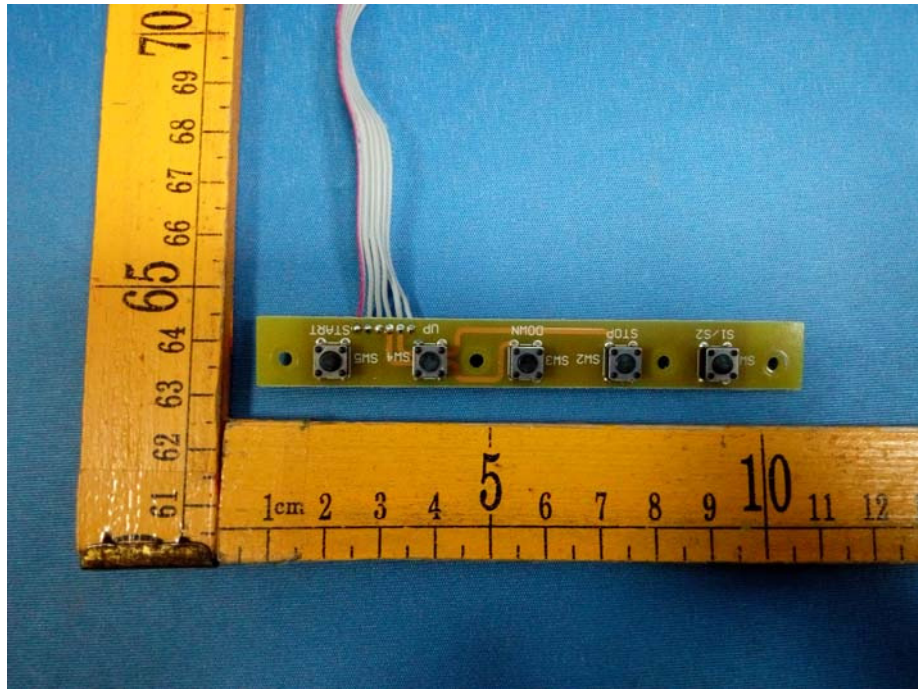


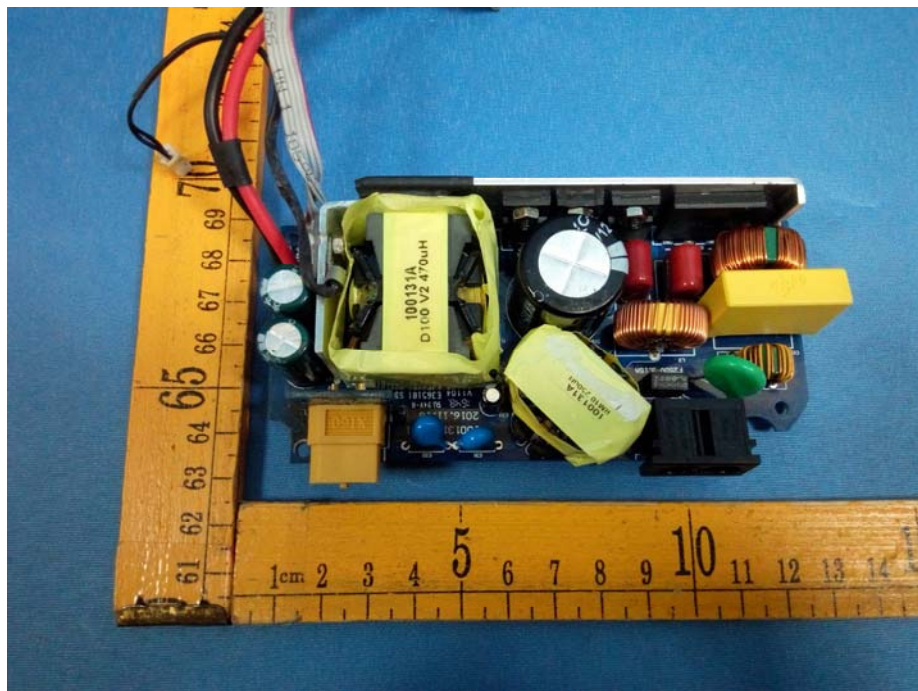
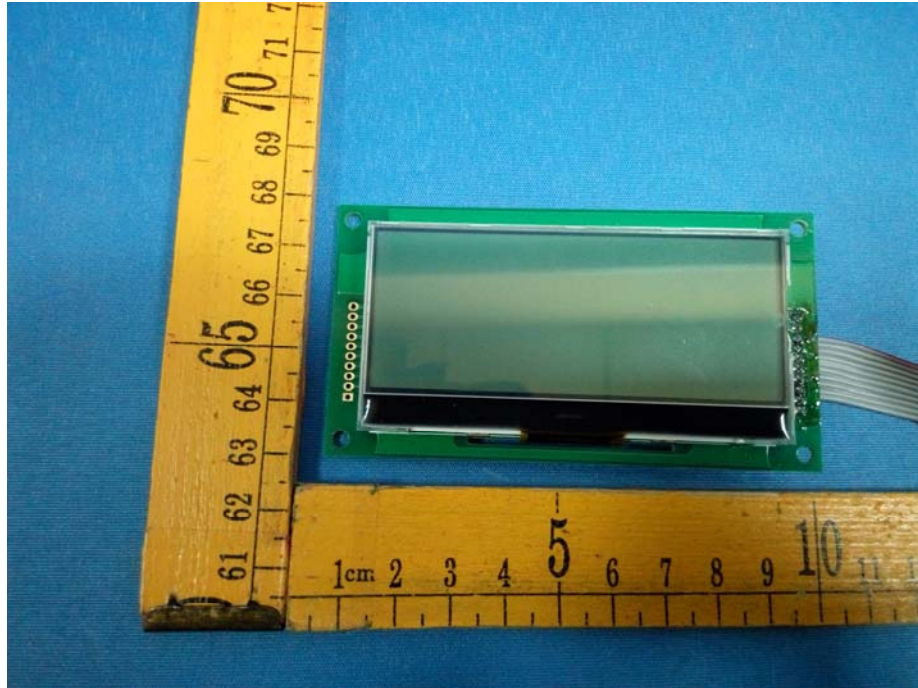


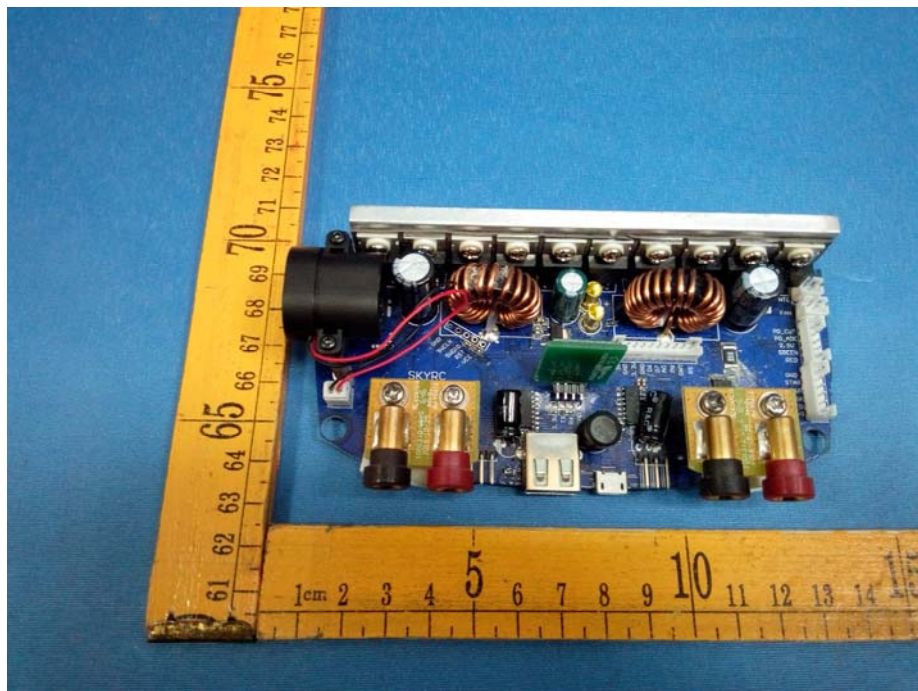
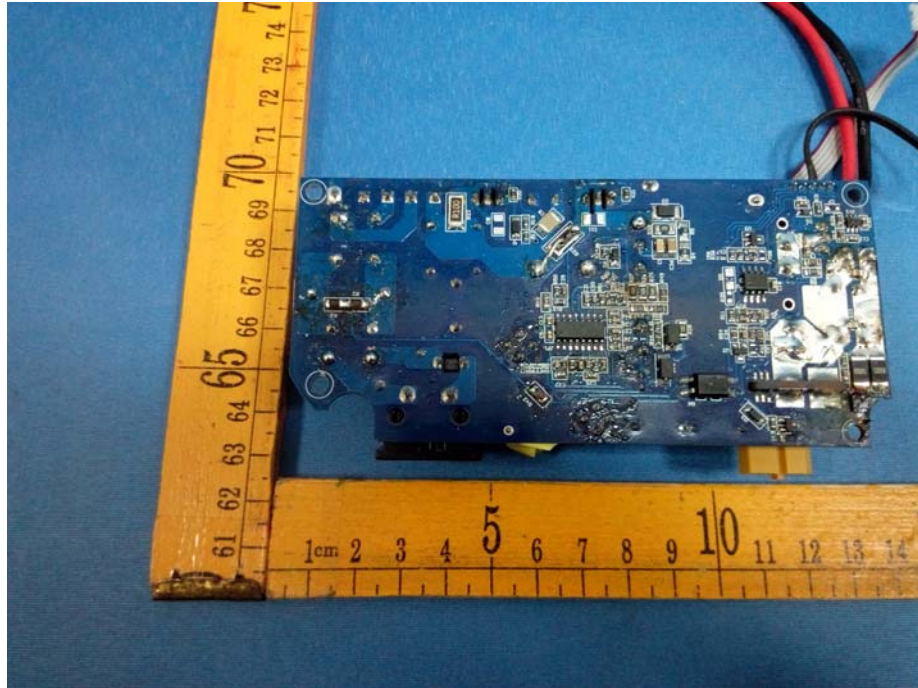


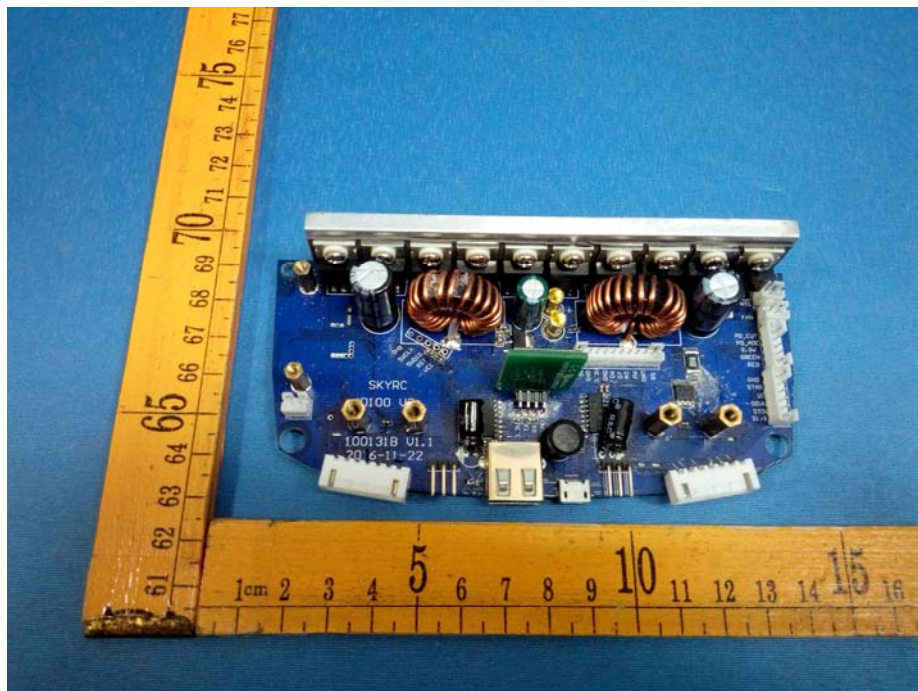
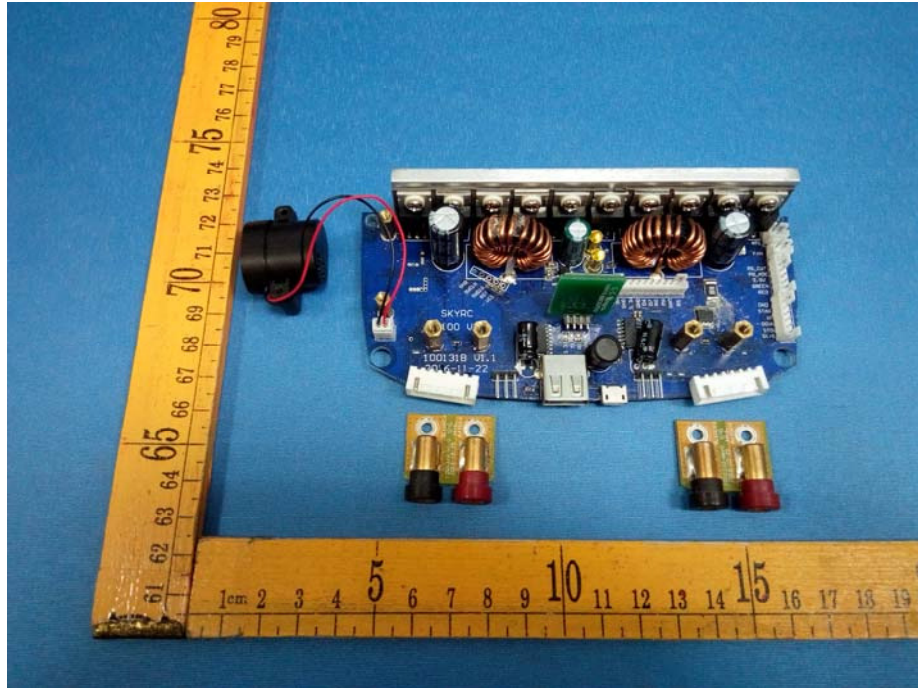
### 16.2 Internal Photos



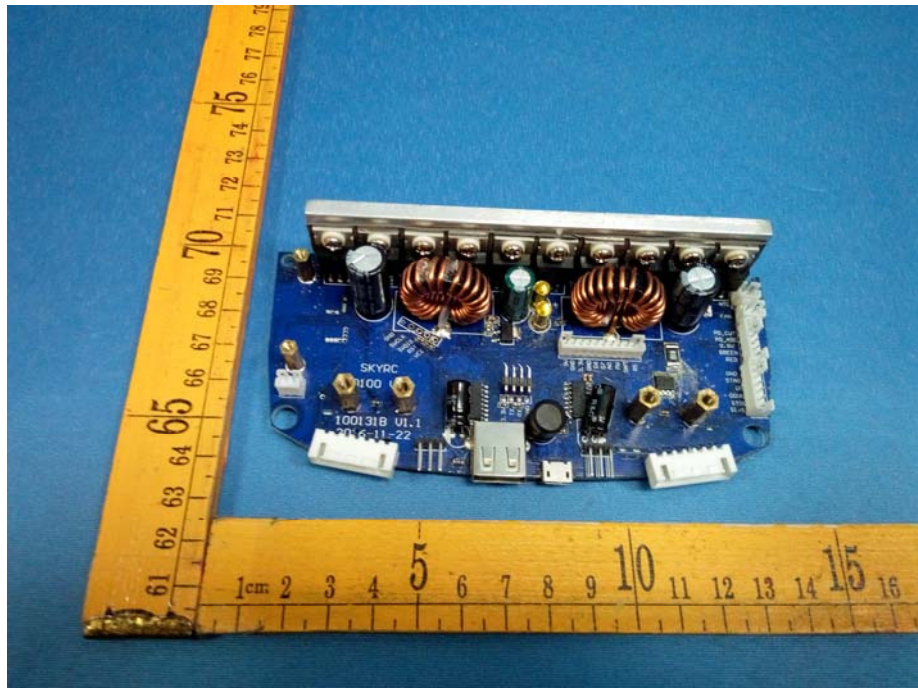
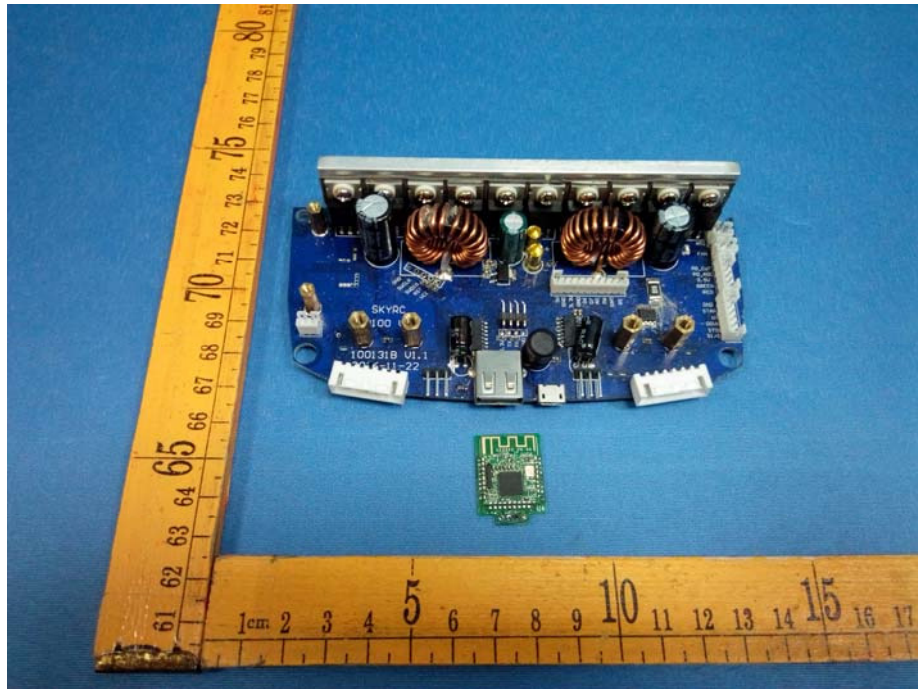


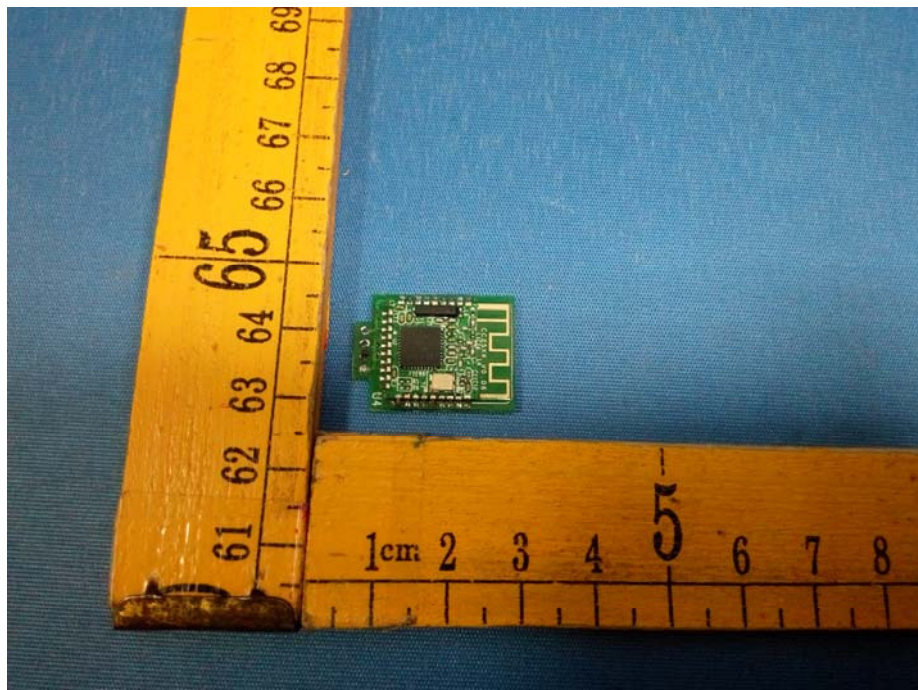
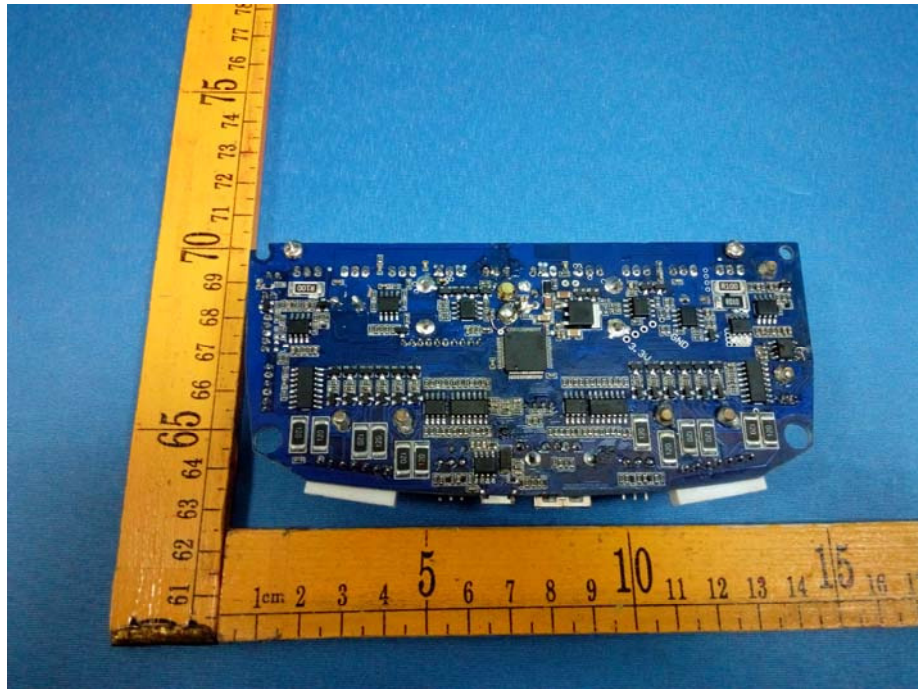


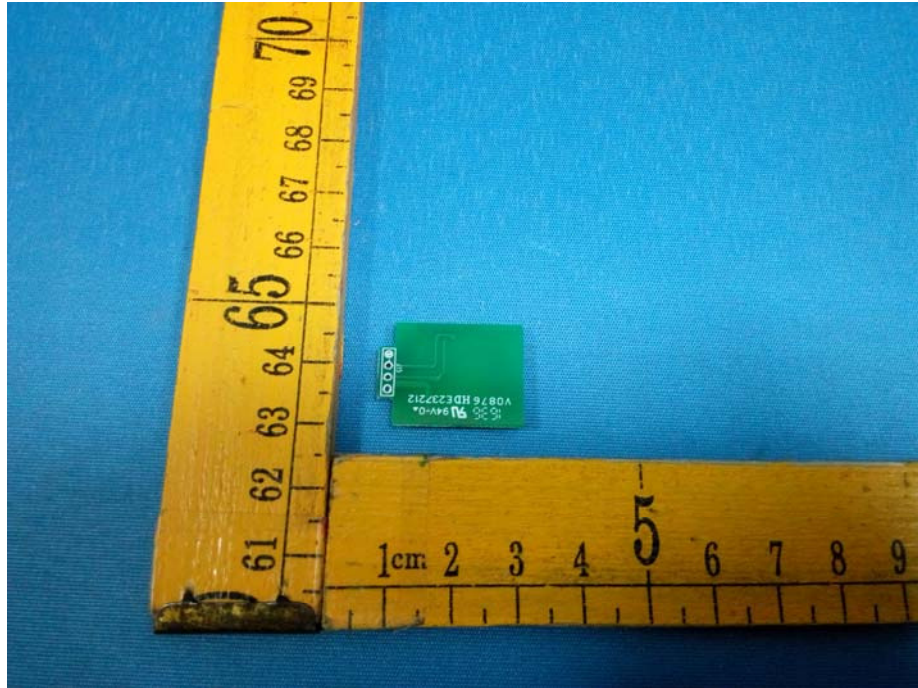














====End of Report====