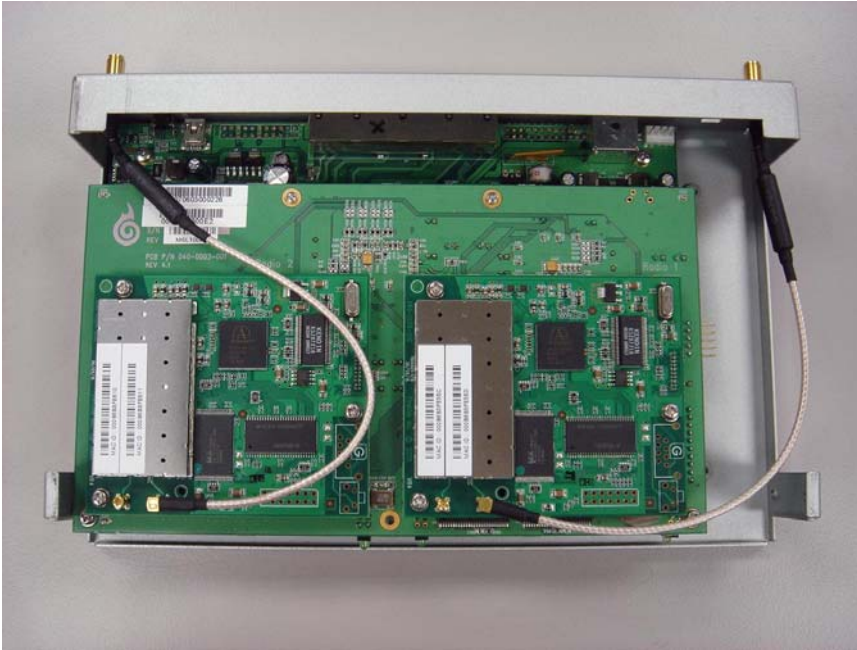
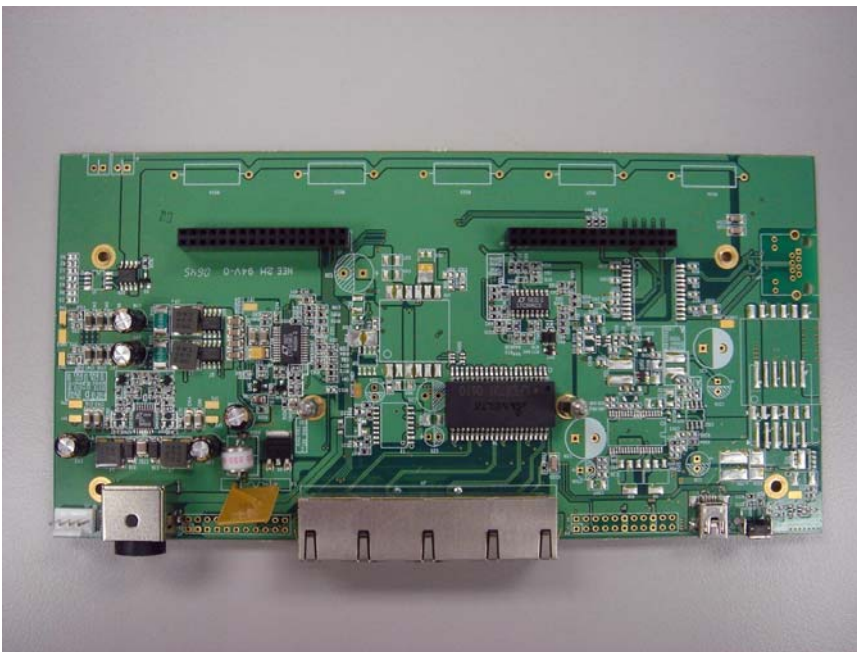


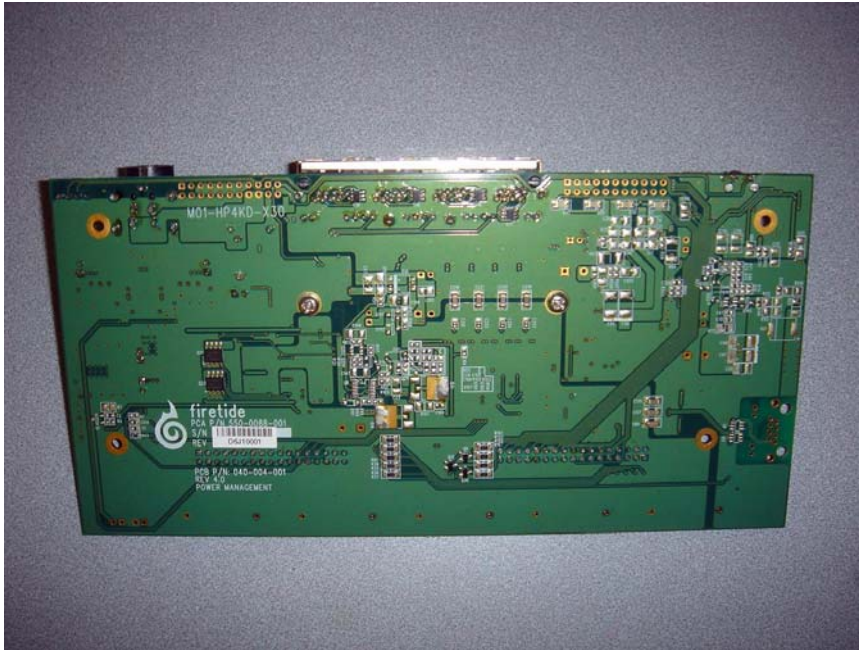
610x Mesh Node Internal Photos



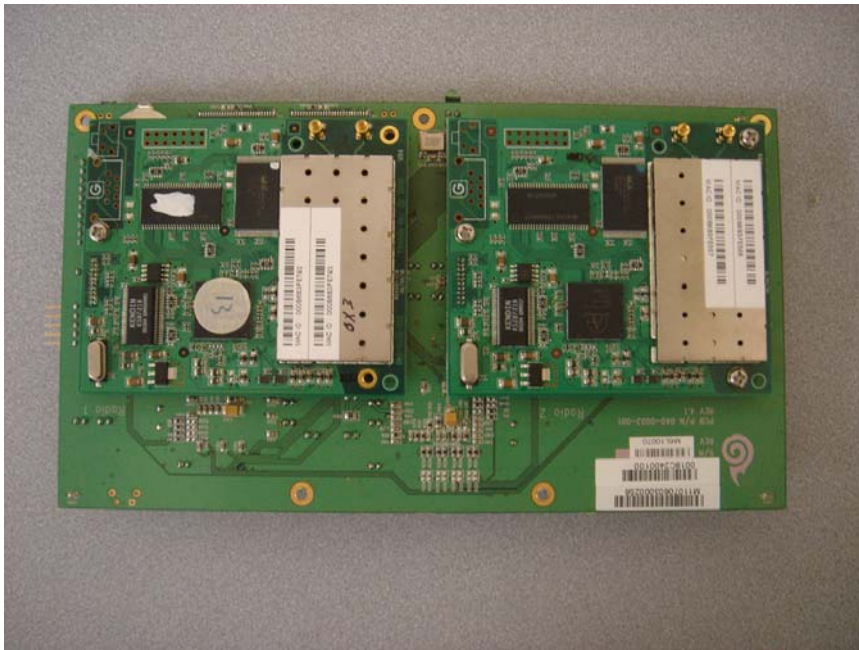
Cover Removed



Component Side of Daughter Card



Solder Side of Daughter Card



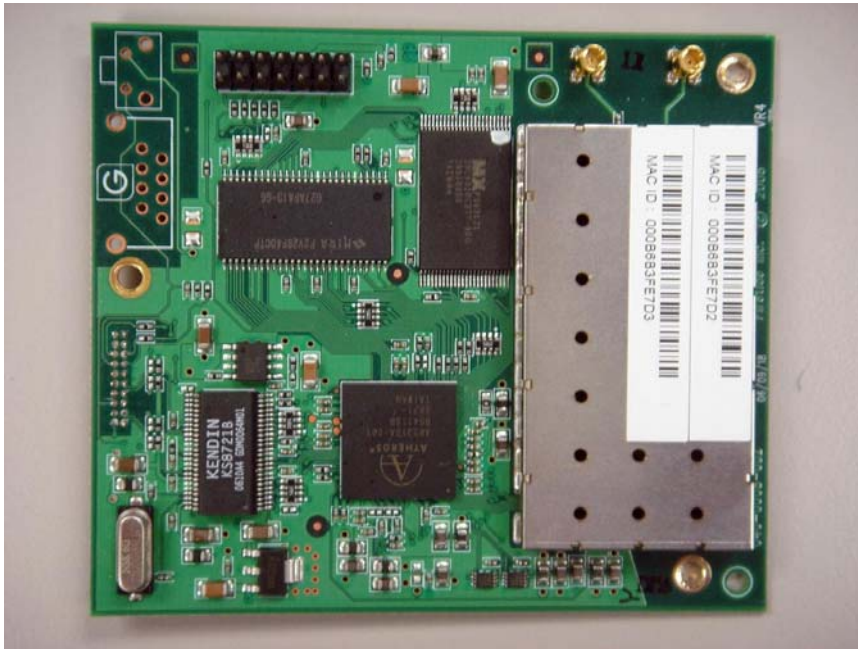
Two Radio Cards mated to Motherboard



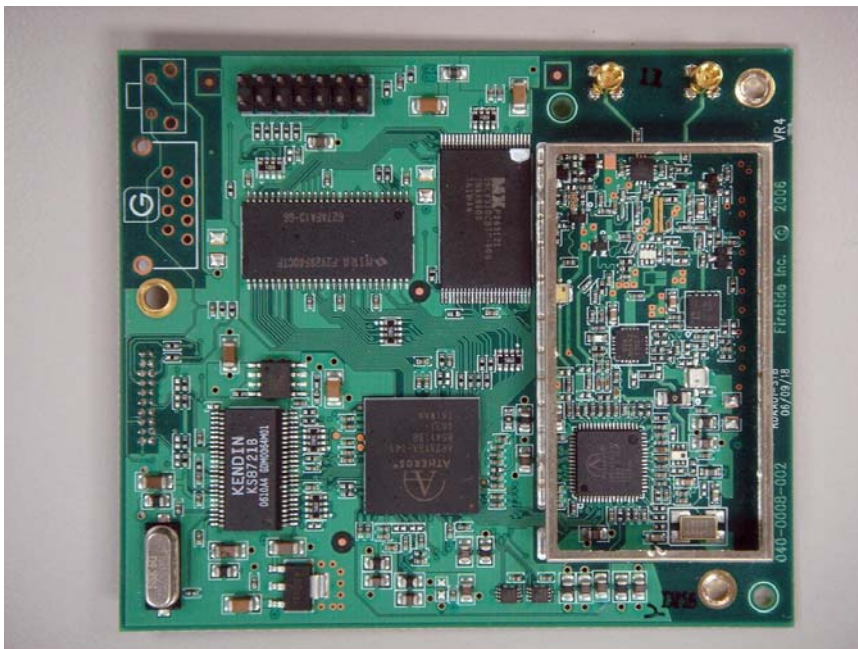
Component side of Motherboard



Solder side of Motherboard



Component side of Radio Card w/shield installed



Component side of Radio Card w/shield cover removed



Solder side of Radio Card