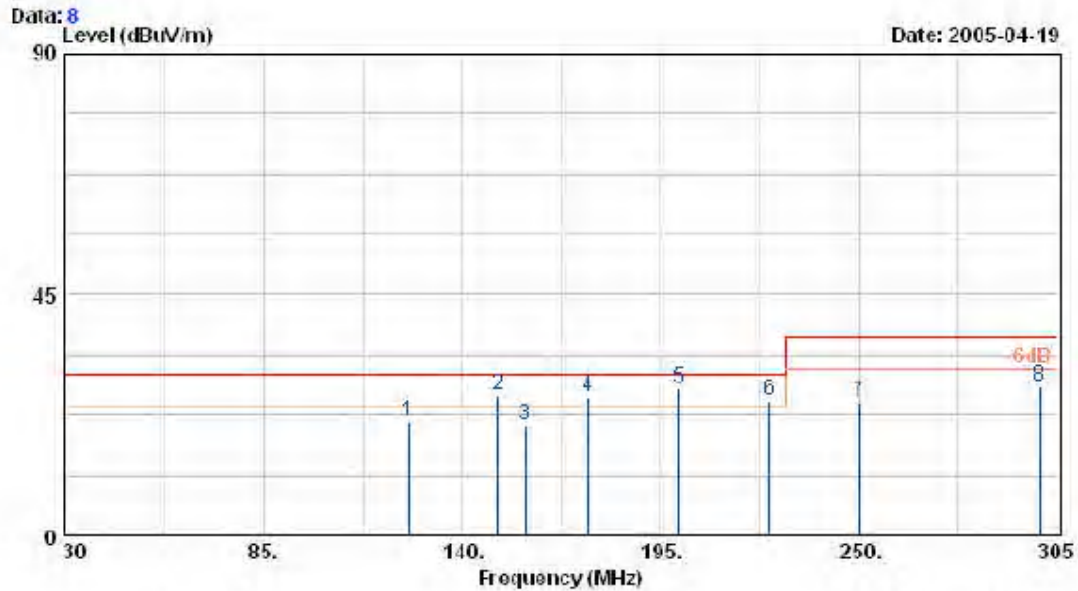


Test mode 3

EUT : RAZOR
 Power : AC 110V
 Test Mode : LINK
 Memo : 5.8G(8dBi)

Pol/Phase : HORIZONTAL
 Temperature : 27 °C
 Humidity : 68 %

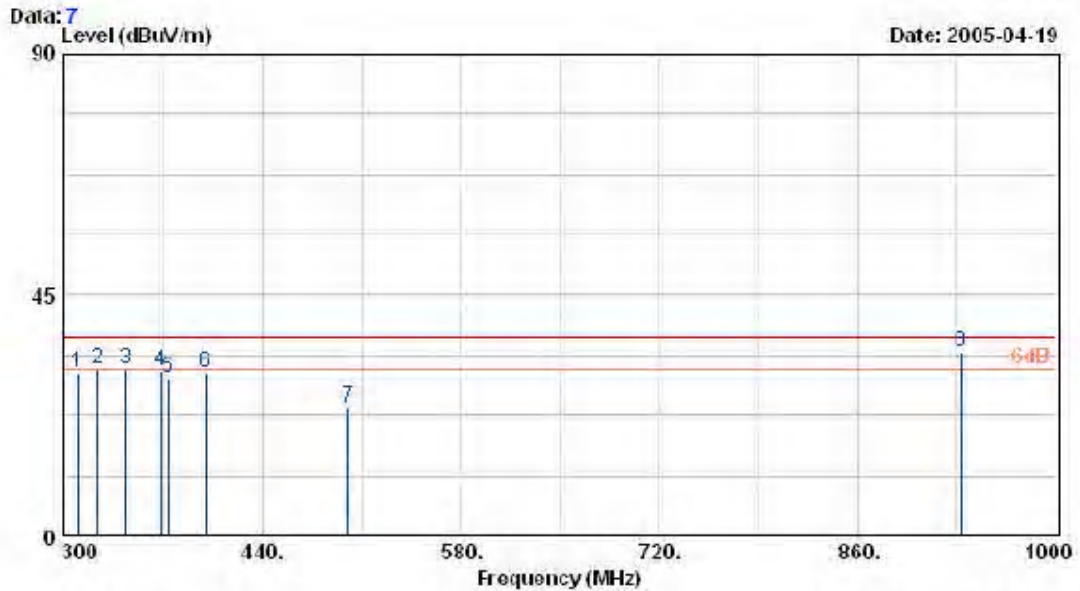


Freq	Read Level	Factor	Level	Limit	Over Limit	Remark	Ant Pos	Tab Pos
MHz	dBuV	dBuV/m	dBuV/m	dB	dB			
124.99	37.17	-15.89	21.29	30.00	-8.71	Peak	400	0
149.99	42.28	-16.20	26.08	30.00	-3.92	QP	400	0
157.50	37.27	-16.59	20.68	30.00	-9.33	Peak	400	0
174.99	43.70	-17.68	26.02	30.00	-3.98	QP	400	0
199.99	45.06	-17.41	27.65	30.00	-2.35	QP	400	0
224.99	42.13	-17.08	25.04	30.00	-4.96	QP	400	0
250.01	38.42	-13.69	24.73	37.00	-12.27	Peak	400	0
299.99	39.16	-11.42	27.74	37.00	-9.26	Peak	400	0

Remarks: 1. Level = Read Level + factor
 2. Factor = Antenna factor + Cable loss - Amplifier factor

EUT : RAZOR
 Power : AC 110V
 Test Mode : LINK
 Memo : 5.8G(8dB)

Pol/Phase : HORIZONTAL
 Temperature : 27 °C
 Humidity : 68 %

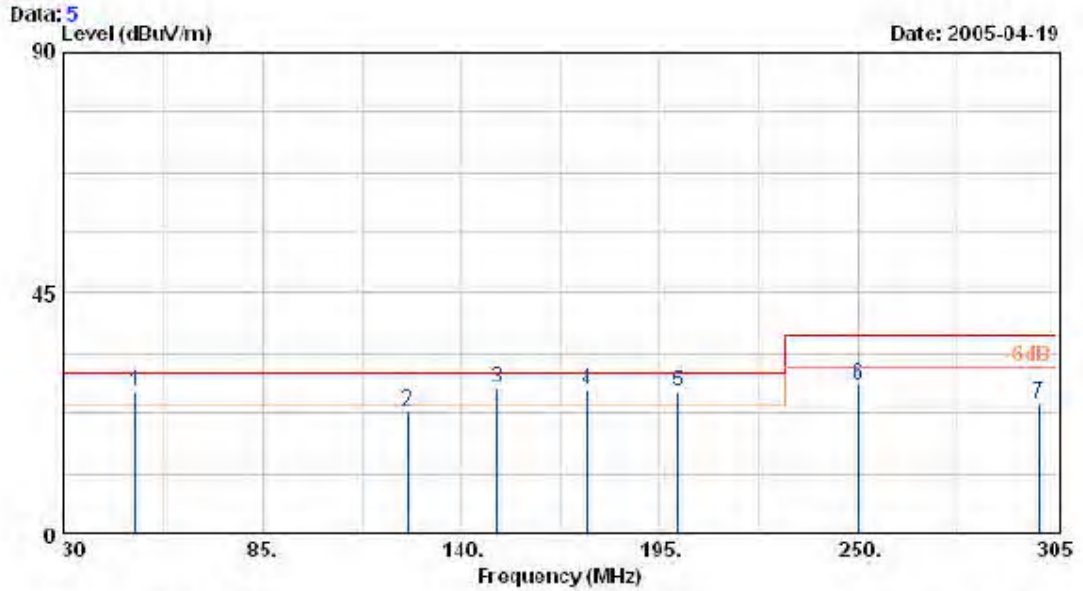


Freq	Read Level	Factor	Level	Limit	Over Limit	Remark	Ant Pos	Tab Pos
MHz	dBuV	dBuV/m	dBuV/n	dB	dB			
310.50	41.82	-11.44	30.38	37.00	-6.62	Peak	100	0
325.13	42.10	-11.13	30.97	37.00	-6.03	Peak	100	0
344.50	41.97	-10.97	31.00	37.00	-6.00	Peak	100	0
368.88	41.18	-10.34	30.83	37.00	-6.17	Peak	100	0
375.13	39.82	-10.25	29.57	37.00	-7.43	Peak	100	0
400.00	39.86	-9.33	30.53	37.00	-6.47	QP	100	0
500.08	31.40	-7.50	23.90	37.00	-13.10	Peak	100	0
933.33	33.47	1.03	34.50	37.00	-2.50	QP	100	0

Remarks: 1. Level = Read Level + factor
 2. Factor = Antenna factor + Cable loss - Amplifier factor

EUT : RAZOR
 Power : AC 110V
 Test Mode : LINK
 Memo : 5.9G(8dBi)

Pol/Phase : VERTICAL
 Temperature : 27 °C
 Humidity : 68 %

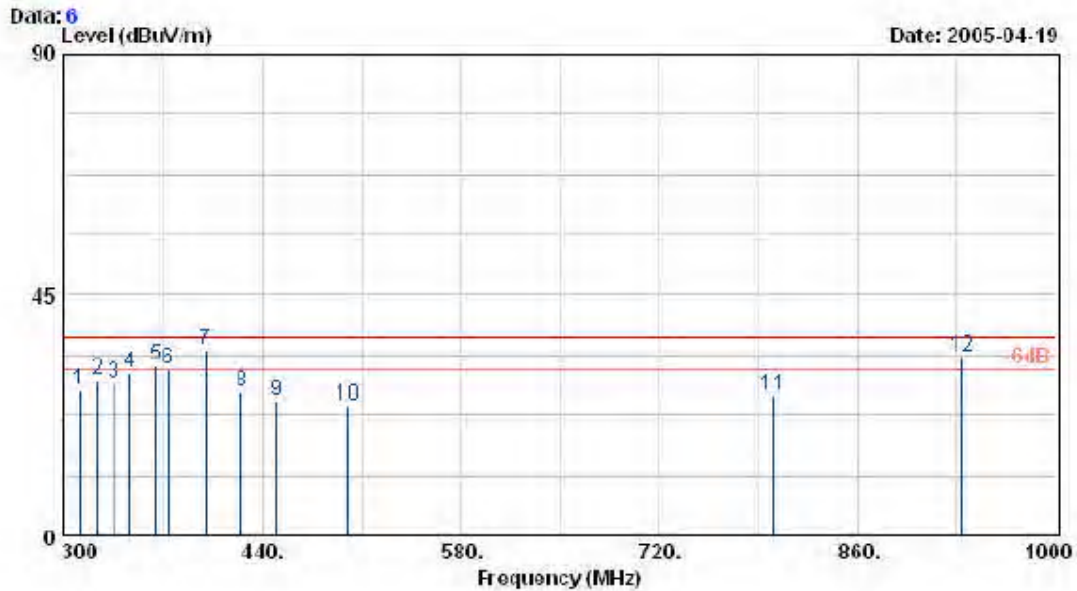


Freq	Read Level	Factor	Level	Limit	Over Limit	Remark	Ant Pos	Tab Pos
MHz	dBuV	dBuV/m	dBuV/m	dB	dB			
49.98	46.03	-19.54	26.49	30.00	-3.51	QP	100	360
124.99	38.69	-15.89	22.80	30.00	-7.20	Peak	100	360
149.99	43.34	-16.20	27.14	30.00	-2.86	QP	100	360
175.00	44.46	-17.69	26.78	30.00	-3.23	QP	100	360
199.99	43.93	-17.41	26.52	30.00	-3.48	QP	100	360
250.01	41.39	-13.69	27.70	37.00	-9.30	Peak	100	360
299.98	35.59	-11.42	24.17	37.00	-12.83	Peak	100	360

Remarks: 1. Level = Read Level + factor
 2. Factor = Antenna factor + Cable loss - Amplifier factor

EUT : RAZOR
 Power : AC 110V
 Test Mode : LINK
 Memo : 5.8G(8dB)

Pol/Phase : VERTICAL
 Temperature : 27 °C
 Humidity : 68 %



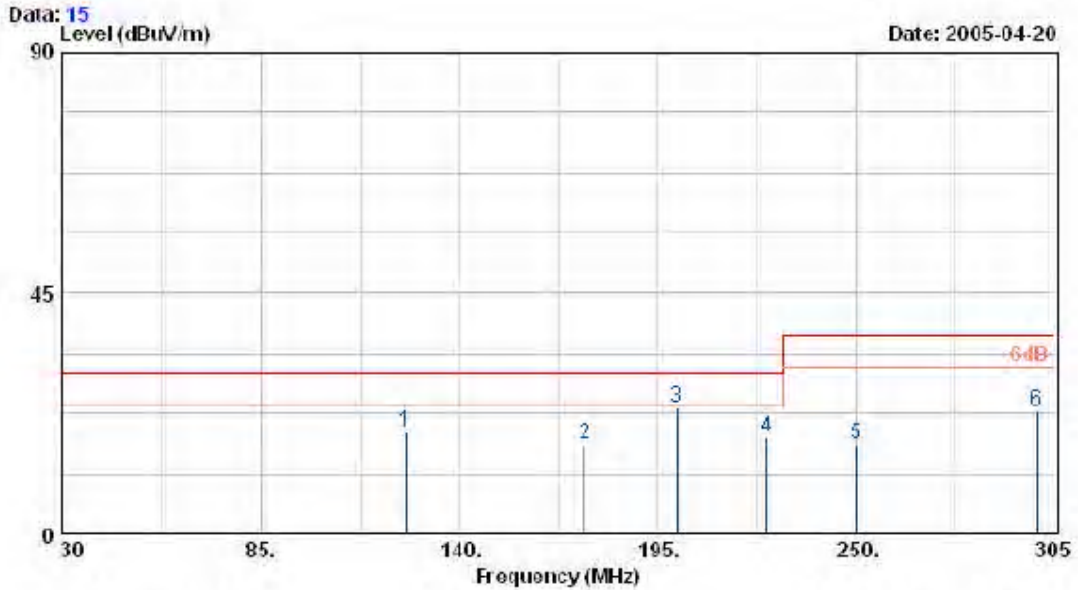
Freq	Read Level	Factor	Level	Limit	Over Limit	Remark	Ant Pos	Tab Pos
MHz	dBuV	dBuV/m	dBuV/m	dB	dB			
311.75	38.53	-11.41	27.12	37.00	-9.88	Peak	100	0
325.13	40.13	-11.13	29.00	37.00	-8.00	Peak	100	0
336.40	39.56	-11.08	28.48	37.00	-8.52	Peak	100	0
347.13	41.41	-10.90	30.51	37.00	-6.49	QP	100	0
365.75	42.08	-10.47	31.61	37.00	-5.39	QP	100	0
375.13	41.23	-10.25	30.98	37.00	-6.02	Peak	100	0
399.99	44.09	-9.33	34.76	37.00	-2.24	QP	100	0
424.99	35.85	-9.12	26.73	37.00	-10.27	Peak	100	0
449.97	34.08	-8.94	25.13	37.00	-11.87	Peak	100	0
500.02	31.88	-7.50	24.38	37.00	-12.62	Peak	100	0
800.02	28.42	-2.27	26.15	37.00	-10.85	Peak	100	0
933.32	32.24	1.03	33.27	37.00	-3.73	QP	100	0

Remarks: 1. Level = Read Level + factor
 2. Factor = Antenna factor + Cable loss - Amplifier factor

Test mode 4

EUT : RAZOR
 Power : AC 110V
 Test Mode : LINK
 Memo : 2.4G(\$dB)

Pol/Phase : HORIZONTAL
 Temperature : 27 °C
 Humidity : 68 %

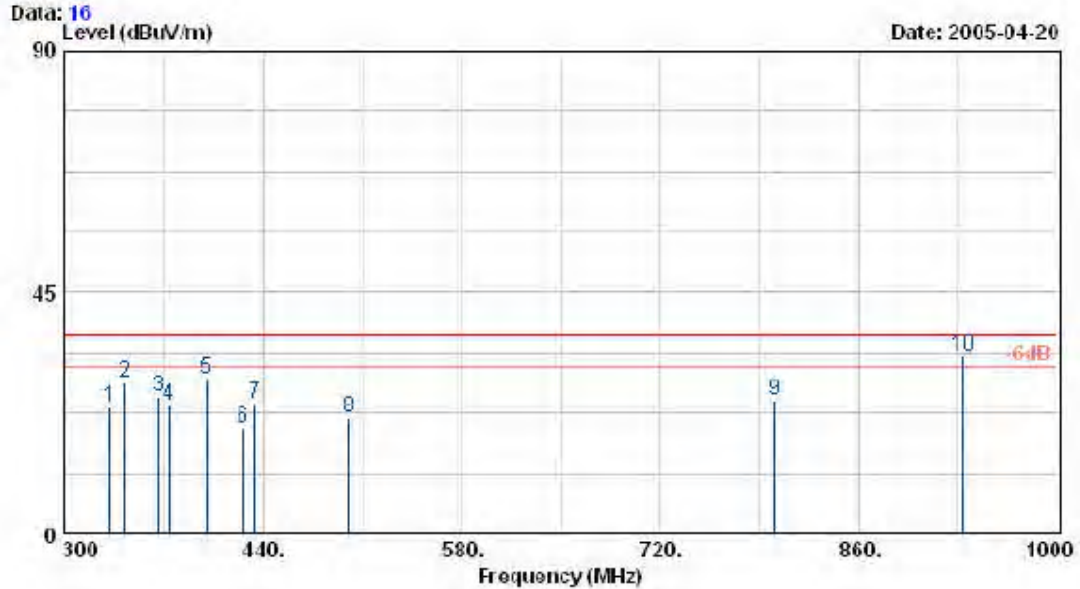


Freq	Read Level	Factor	Level	Limit	Over Limit	Remark	Ant Pos	Tab Pos
MHz	dBuV	dBuV/m	dBuV/n	dB	dB			
124.99	34.82	-15.89	18.94	30.00	-11.06	Peak	400	0
174.66	34.50	-17.67	16.83	30.00	-13.17	Peak	400	0
200.01	40.98	-17.41	23.57	30.00	-6.43	Peak	400	0
225.00	34.94	-17.08	17.85	30.00	-12.15	Peak	400	0
250.03	30.30	-13.69	16.61	37.00	-20.39	Peak	400	0
300.03	34.42	-11.42	23.00	37.00	-14.00	Peak	400	0

Remarks: 1. Level = Read Level + factor
 2. Factor = Antenna factor + Cable loss - Amplifier factor

EUT : RAZOR
 Power : AC 110V
 Test Mode : LINK
 Memo : 2.4G(@dBi)

Pol/Phase : HORIZONTAL
 Temperature : 27 °C
 Humidity : 68 %

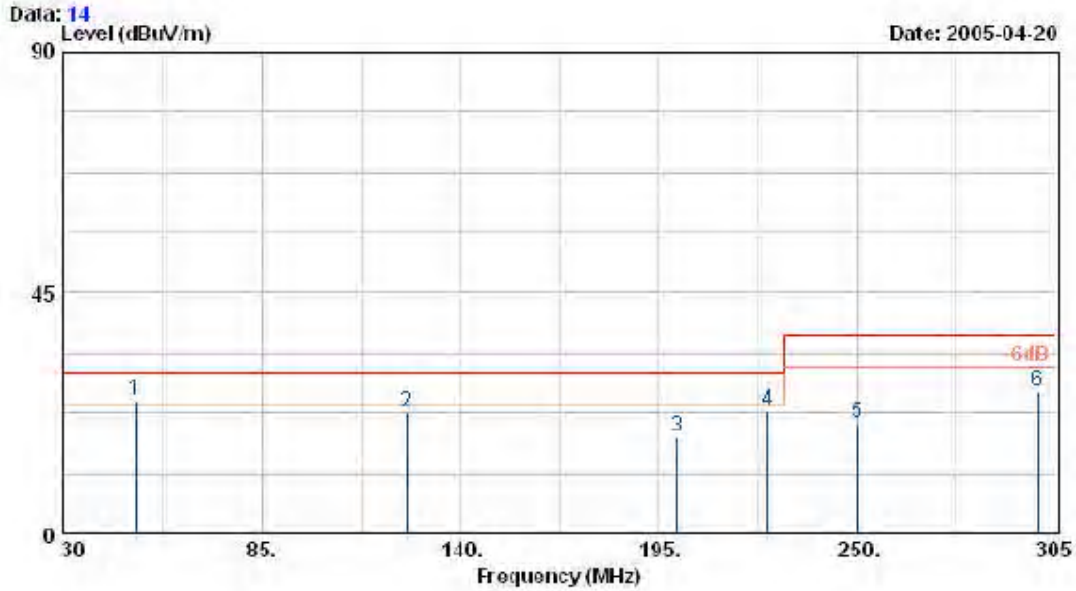


Freq	Read Level	Factor	Level	Limit	Over Limit	Remark	Ant Pos	Tab Pos
MHz	dBuV	dBuV/m	dBuV/m	dB	dB			
332.13	34.57	-11.07	23.50	37.00	-13.50	Peak	400	360
343.38	39.03	-11.00	28.03	37.00	-8.97	Peak	400	360
366.69	35.82	-10.43	25.39	37.00	-11.61	Peak	400	360
374.99	34.07	-10.25	23.82	37.00	-13.18	Peak	400	360
399.99	38.11	-9.33	28.78	37.00	-8.22	Peak	400	360
425.44	28.66	-9.14	19.52	37.00	-17.48	Peak	400	360
433.39	33.45	-9.23	24.21	37.00	-12.79	Peak	400	360
500.09	29.11	-7.49	21.62	37.00	-15.38	Peak	400	360
800.01	27.18	-2.27	24.91	37.00	-12.09	Peak	400	360
933.33	31.98	1.03	33.01	37.00	-3.99	QP	100	360

Remarks: 1. Level = Read Level + factor
 2. Factor = Antenna factor + Cable loss - Amplifier factor

EUT : RAZOR
 Power : AC 110V
 Test Mode : LINK
 Memo : 2.4G(8dBi)

Pol/Phase : VERTICAL
 Temperature : 27 °C
 Humidity : 68 %



Freq	Read Level	Factor	Level	Limit	Over Limit	Remark	Ant Pos	Tab Pos
MHz	dBuV	dBuV/m	dBuV/n	dB	dB			
50.20	44.52	-19.61	24.92	30.00	-5.08	QP	100	0
125.02	38.53	-15.88	22.65	30.00	-7.35	Peak	100	0
199.99	35.37	-17.41	17.96	30.00	-12.04	Peak	100	0
225.02	39.88	-17.08	22.80	30.00	-7.20	Peak	100	0
250.01	34.44	-13.69	20.75	37.00	-16.25	Peak	100	0
300.13	38.05	-11.42	26.63	37.00	-10.37	Peak	100	0

Remarks: 1. Level = Read Level + factor
 2. Factor = Antenna factor + Cable loss - Amplifier factor

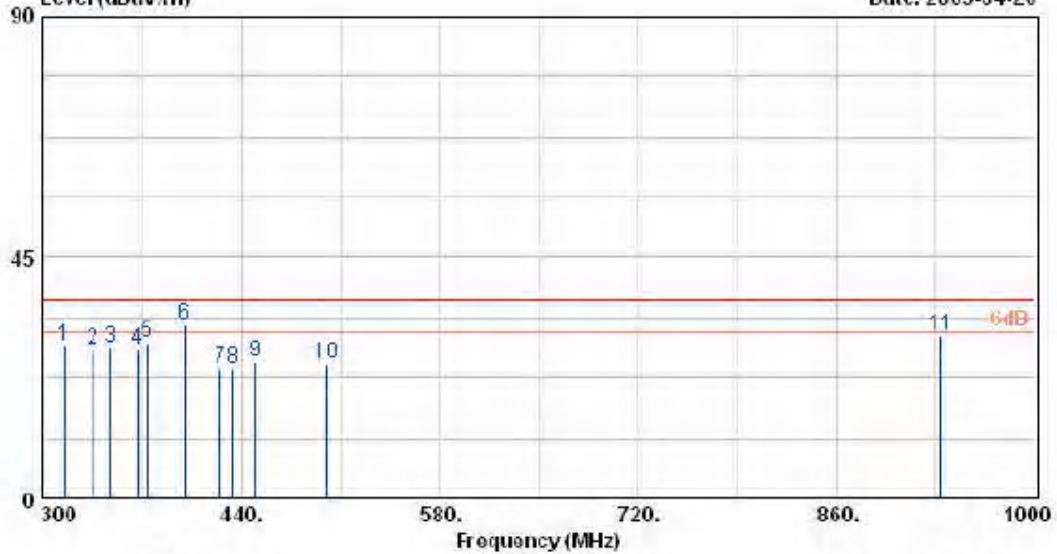
EUT : RAZOR
 Power : AC 110V
 Test Mode : LINK
 Memo : 2.4G(8dBi)

Pol/Phase : VERTICAL
 Temperature : 27 °C
 Humidity : 68 %

Data: 13

Level (dBuV/m)

Date: 2005-04-20



Freq MHz	Read Level dBuV	Factor dBuV/m	Level dBuV/m	Limit dB	Over Limit dB	Remark	Ant Pos	Tab Pos
315.80	39.70	-11.31	28.39	37.00	-8.61	Peak	100	360
336.05	38.94	-11.08	27.86	37.00	-9.14	Peak	100	360
348.30	38.92	-10.87	28.05	37.00	-8.95	Peak	100	360
367.90	38.33	-10.38	27.95	37.00	-9.05	Peak	100	360
375.04	39.43	-10.25	29.18	37.00	-7.82	Peak	100	360
399.96	41.61	-9.33	32.28	37.00	-4.72	QP	100	360
424.98	33.47	-9.12	24.35	37.00	-12.65	Peak	100	360
433.45	33.56	-9.23	24.33	37.00	-12.67	Peak	100	360
449.98	34.56	-8.94	25.61	37.00	-11.39	Peak	100	360
500.05	32.68	-7.50	25.18	37.00	-11.82	Peak	100	360
933.31	29.48	1.03	30.51	37.00	-6.49	Peak	100	360

Remarks: 1. Level = Read Level + factor
 2. Factor = Antenna factor + Cable loss - Amplifier factor

Test engineer :

Jason

3.5.1 Test Photographs

Test mode 1, 2

Front View



Rear View



Test mode 3, 4

Front View



Rear View



Appendix A. Photographs of EUT

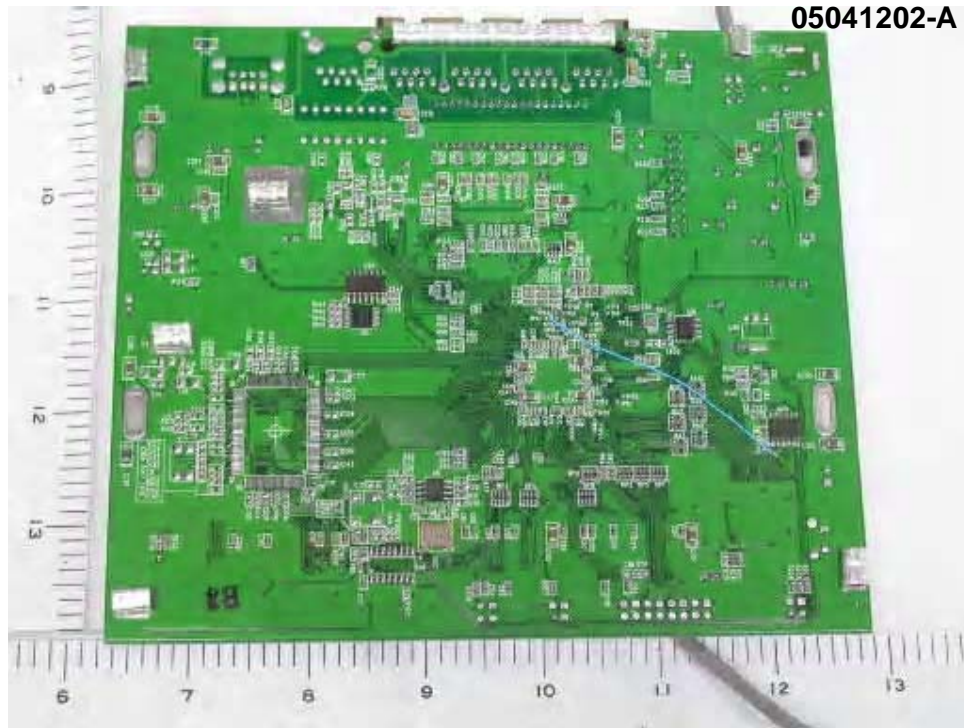




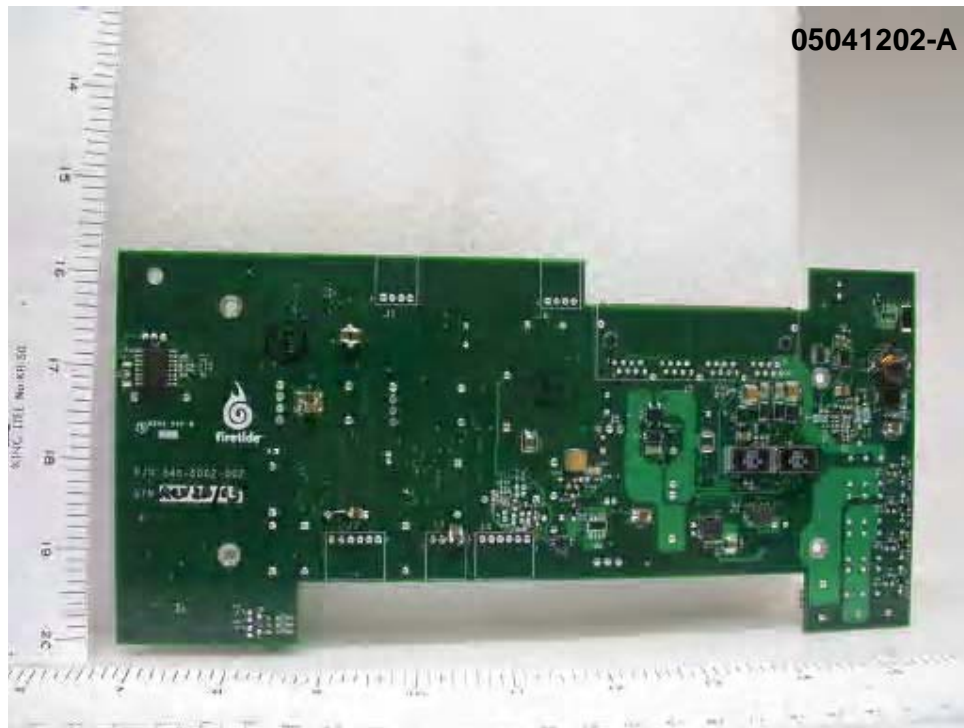
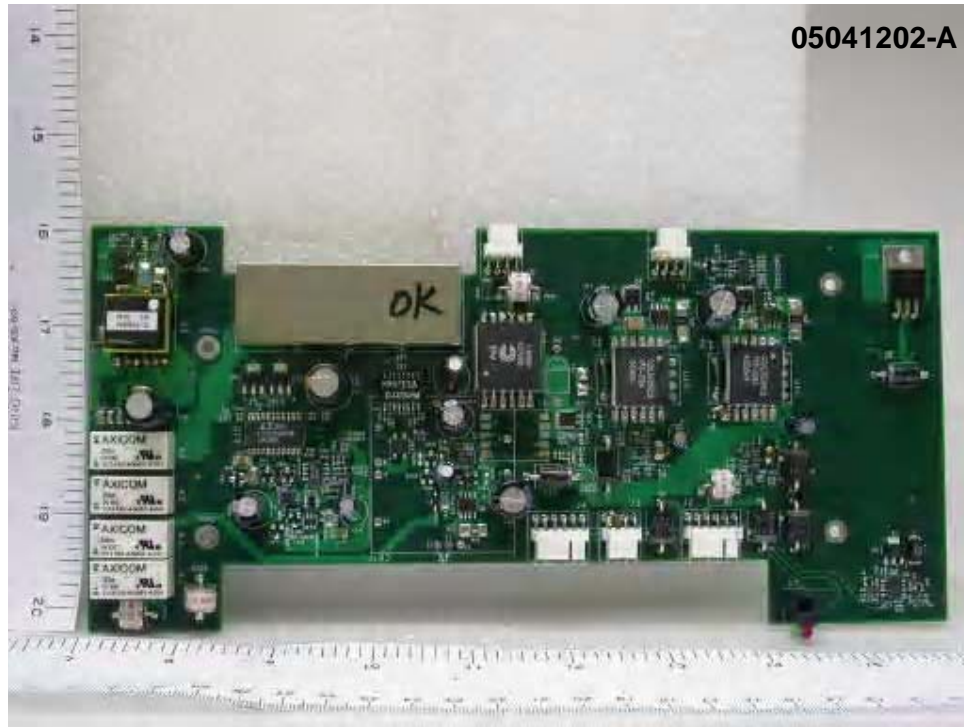


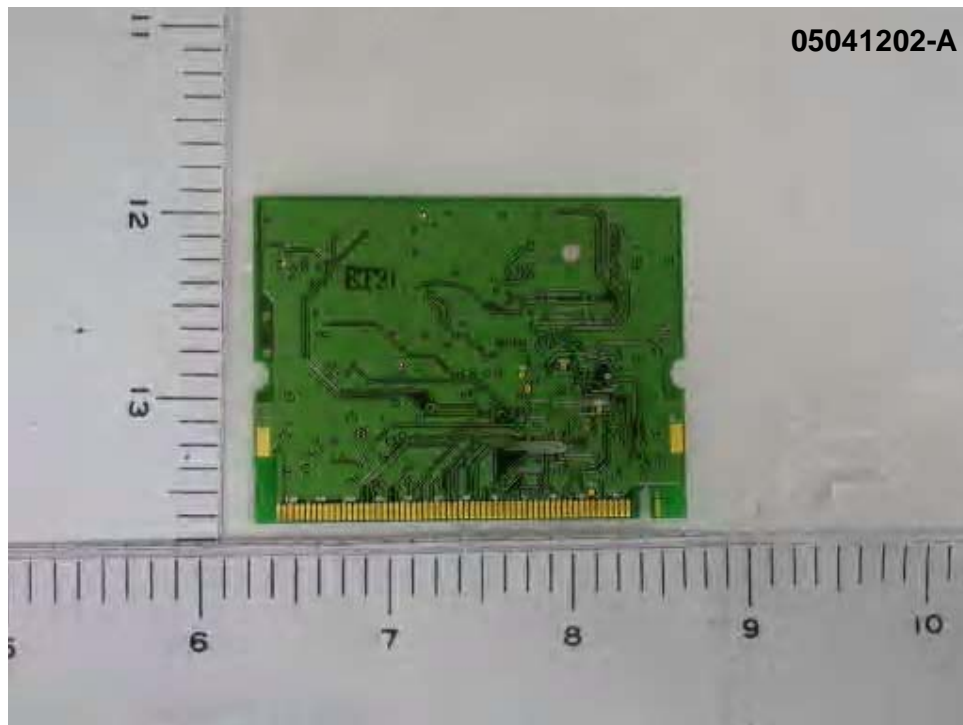
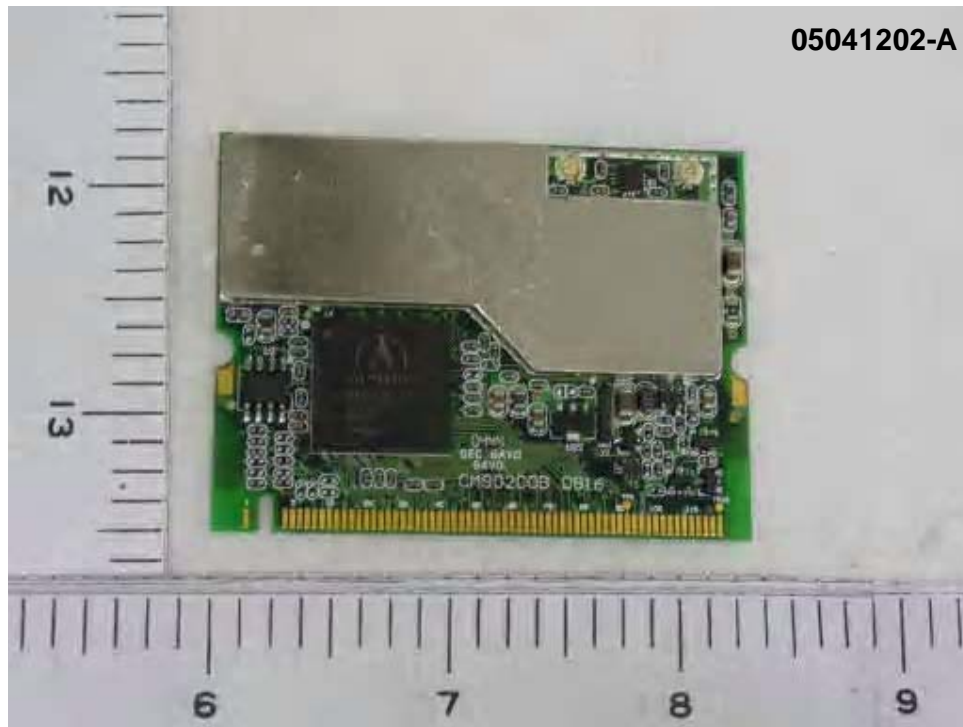


05041202-A



05041202-A





05041202-A



Dipole Antenna (gain : 2.4G@3dBi,5.8G@4dBi)



GP-Antenna (gain : 5.8G@8dBi)



GP-Antenna (gain : 2.4G@8dBi)





