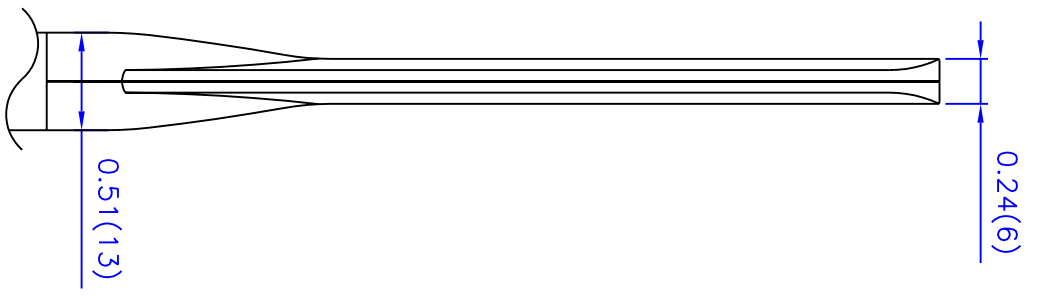
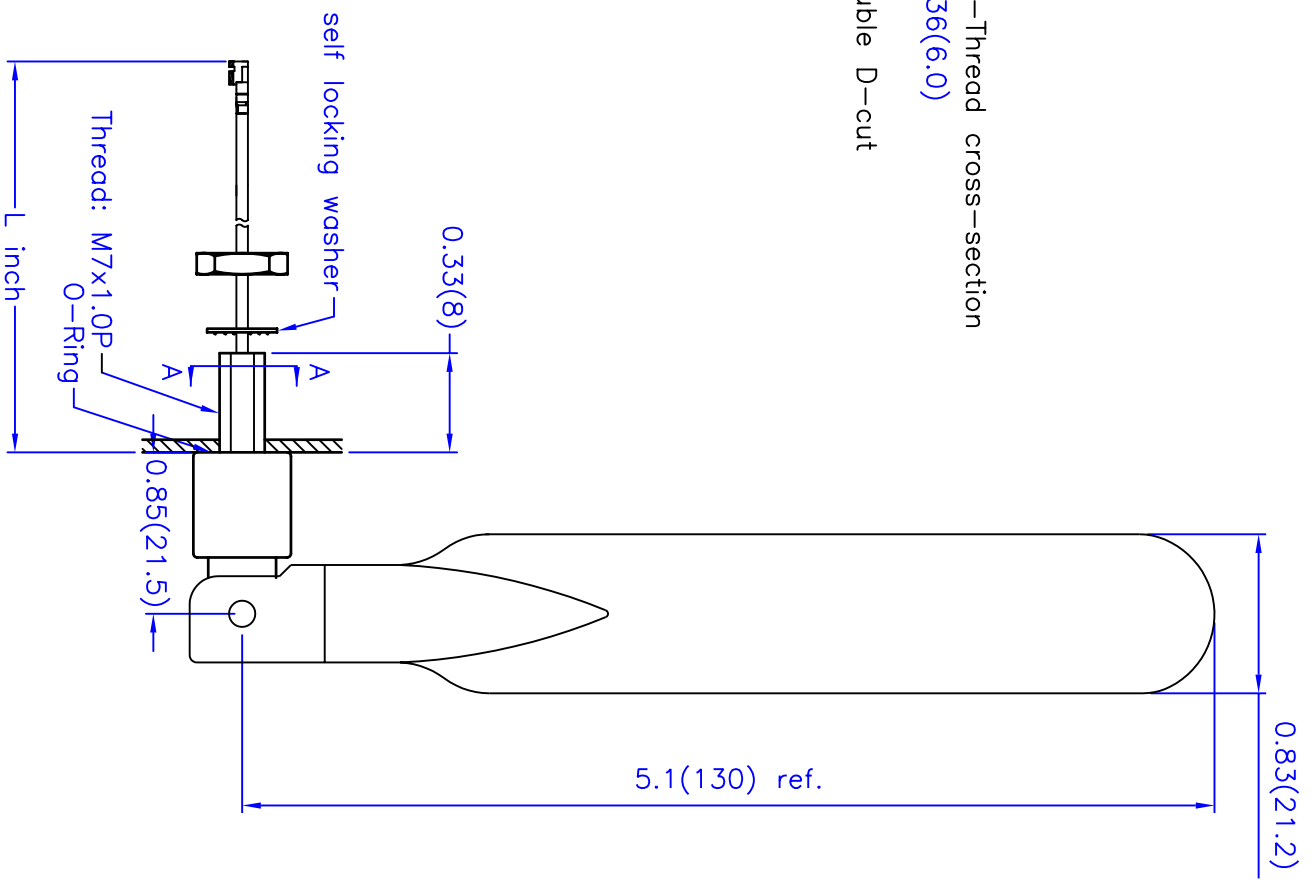


A-A view—Thread cross-section
 0.236(6.0)
 Double D-cut

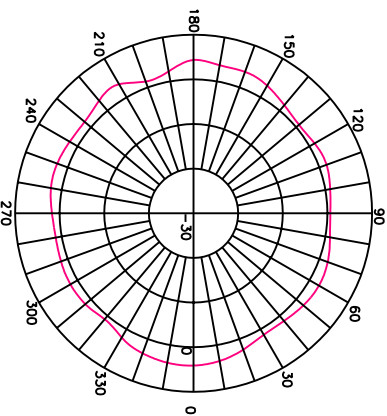
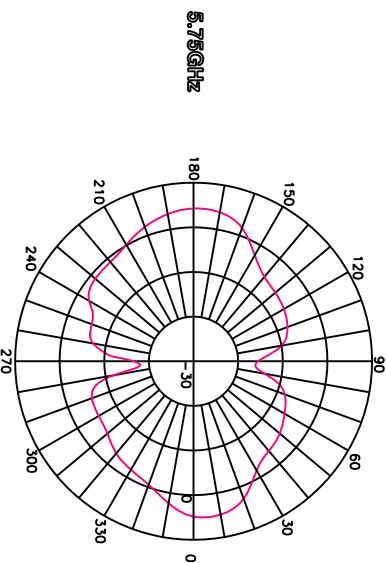
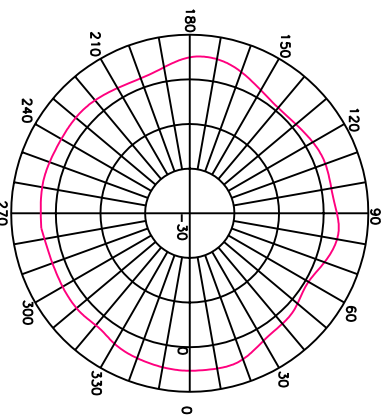
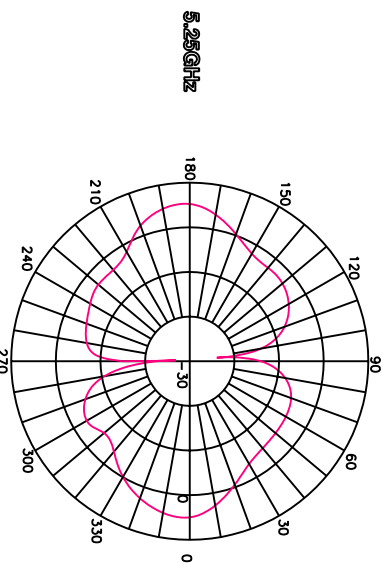
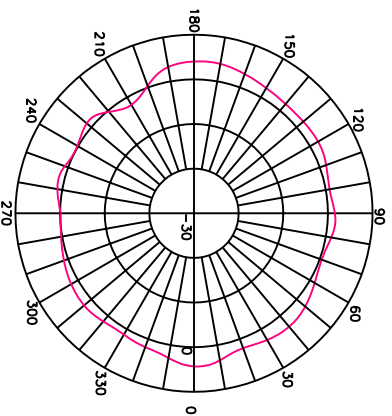
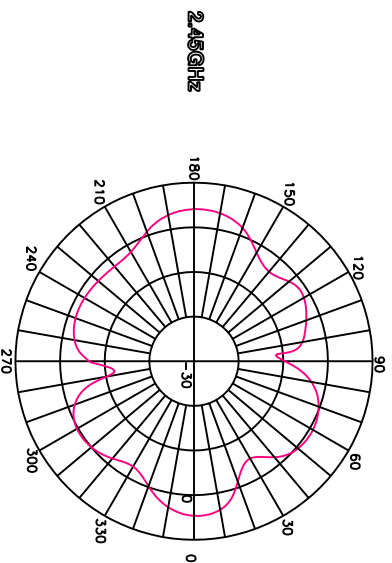


TITLE	2.4/5.2/5.8GHz Fixed Mount	DATE	SHEET
UNIT	Swivel Antenna-614 Model		1 of 2
DWG. NO.	T614FL-L(132)-PX-2.4/5.x-S		
in.(mm)			
SCALE			
None			

NEARSON

E-Plane Pattern

H-Plane Pattern



Electrical Properties:

- Frequency Range: 2.4~2.5 GHz
- 5.15~5.85 GHz
- Impedance: 50Ω nominal
- VSWR: <2.0:1
- Gain*: 2.45GHz 4.0 dBi
- 5.25GHz 5.0 dBi
- 5.75GHz 4.5 dBi
- Radiation: Omni
- Polarization: Vertical

*Gain is measured under no flying lead.

Mechanical Properties:

- Cable: 1.32 mm dia. Harbour Industries
- Cable Length: Standard length L=6 inches. or to be specified.
- Connector: IPX MHF micro coax connector Plug(female) 20278-1R-32 Fits for IPX: 20279-001E-01 Hirose: CL331-0471-0-10
- Material: Polyurethane(Black); BASF
- Overmold: Polyurethane(Black); BASF and Polycarbonate(Black); Bayer
- Swivel: Polycarbonate(Black); Bayer
- Operation Temp.: -20°C to +65°C
- Storage Temp.: -30°C to +75°C

TITLE	2.4/5.2/5.8GHz Fixed Mount		DATE	SHEET
UNIT	Swivel Antenna-614 Model			2 of 2
in.(mm)	DWG. NO.	T614FL-L(132)-PX-2.4/5.X-S		
SCALE				
None	NEARSON			