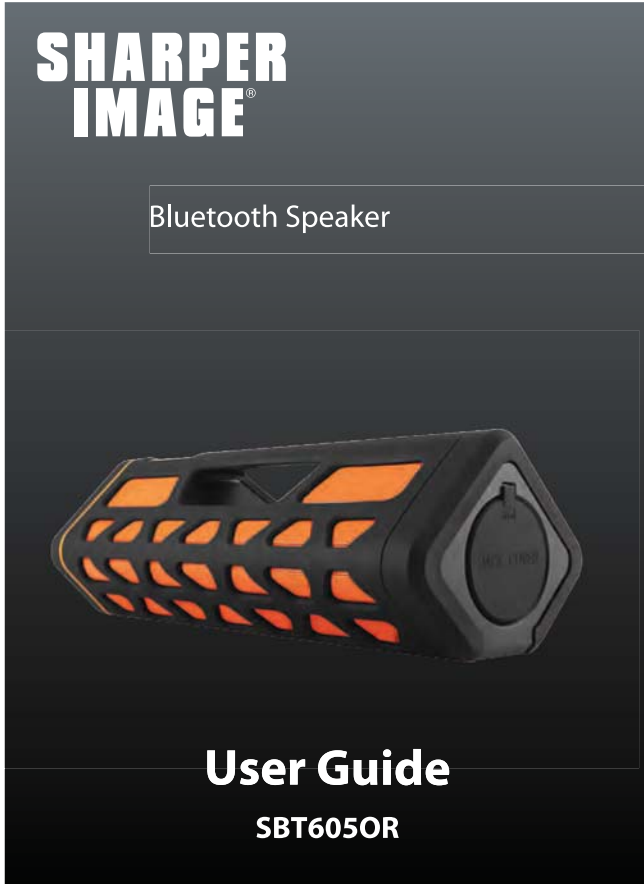


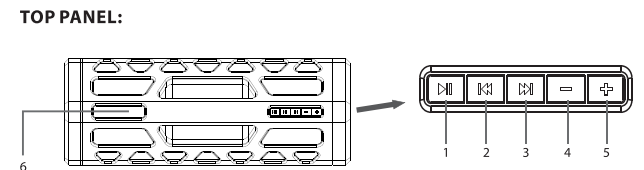
# SBT605OR User Manual



## In the box

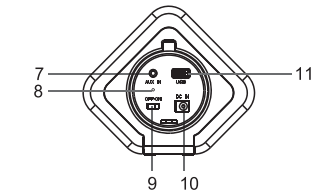


## Location of Controls



1. [▶||] button: Play/pause (quick press)
2. [◀◀] button: Previous track (quick press)
3. [▶▶] button: Next track (quick press)
4. [—] button: Volume down (hold)
5. [+] button: Volume up (hold)
6. LED Indicator Light

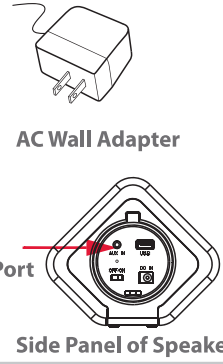
### SIDE PANEL:



7. [AUX IN] input jack
8. Charging indicator light
9. [Power on/off] switch
10. DC in (10V) charging port
11. USB charging jack - to charge external devices

## Charging the Bluetooth Speaker

1. Connect the small end of the AC Wall Adapter into the DC In charging port on the side panel of the speaker. (NOTE: It is better to switch off the speaker before charging.)
2. Connect the other end of the AC Wall Adapter to any standard electrical outlet.
3. The charging indicator light on the side panel of the speaker lights up ORANGE when charging.
4. The charging indicator light on the side panel of the speaker turns GREEN when finished charging.



**NOTE:** Make sure you charge the speaker for 8 hours before using it for the first time.

## Charging external devices

1. To enable the USB port to charge other devices, switch the [Power ON/OFF] switch to ON and attach your device via USB. After 10-15 minutes of charging the USB charging jack will go into standby mode.
2. Usually 10-15 minutes is enough to charge any device, but in case you'd like to charge your device longer press the [▶||] button on again after 10-15 minutes (after it has standby) to switch on the operation again.

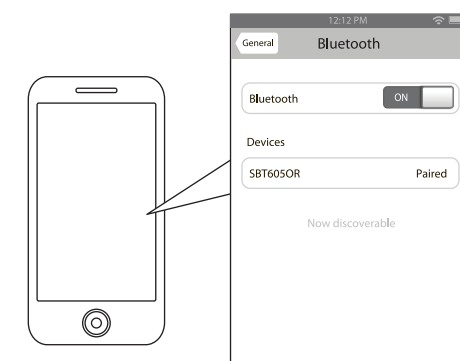
**NOTE:** The USB charging jack can only be used for charging external devices, not for data transfer.

## Pairing the speaker with a Bluetooth enabled device

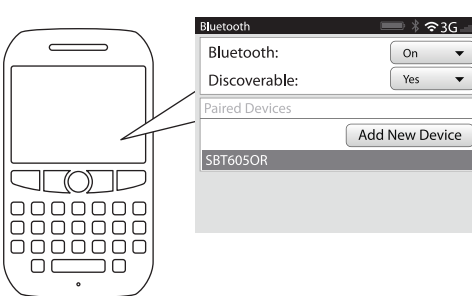
1. Turn the [Power ON/OFF] switch located on the side of the speaker to the ON position.
2. The speaker will automatically go into pairing mode (the LED indicator light will flash blue quickly when in pairing mode).
3. Keep the speaker and Bluetooth enabled device within 30 feet of each other during the pairing process.
4. Set your mobile phone or other Bluetooth enabled device to search for Bluetooth devices.
5. When the Bluetooth enabled device finds the speaker, select SBT605OR from the list of found devices.



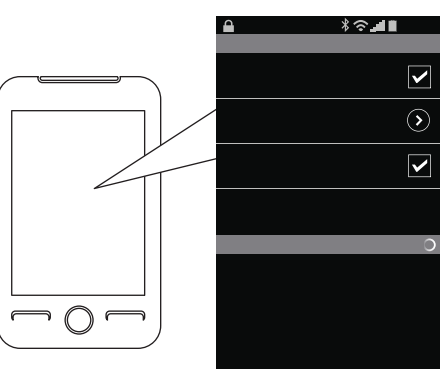
On an iPhone  
• Go to SETTINGS > GENERAL > BLUETOOTH  
(Make sure Bluetooth is turned ON)



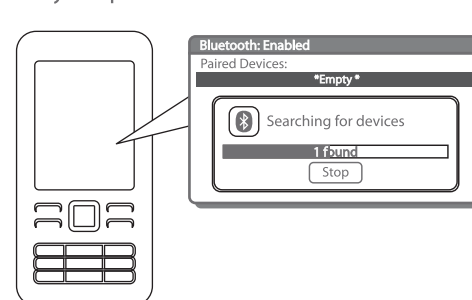
On a Blackberry  
• Go to SETTINGS/OPTIONS > BLUETOOTH  
• Enable BLUETOOTH



On an Android Phone  
• Go to SETTINGS > BLUETOOTH > MENU > Search



On other Cell Phones/Devices  
• Review the instruction manual that came with your phone/device.



6. If required, enter the password 0000. Select OK or Yes to pair the speaker to the device.
7. After a successful registration, the LED Indicator light will flash BLUE once every three seconds.
8. To disconnect the Bluetooth speaker from the device, press and hold [▶||] button for three seconds. The speaker will disconnect and go back into pairing mode (you will hear a beep and the blue indicator will start flashing).
9. You can also disconnect the bluetooth connection by manually switching off the bluetooth connection on your mobile device.

**NOTE:** The screenshots above are typical of many Bluetooth enabled devices in the market today, and are used to assist in the explanation of the pairing process. Your Bluetooth enabled device's interface and interaction with the Bluetooth Speaker may slightly differ from the illustrations above.

## Using your Bluetooth Speaker

**Powering ON/OFF**  
• To turn **ON**, switch the [Power ON/OFF] switch located on the speaker's side panel to the **ON** position.

• To turn **OFF**, switch the [Power ON/OFF] switch located on the speaker's side panel to the **OFF** position.

• If there is no connection with the speaker for 10-15 minutes, the speaker will automatically turn to standby mode and the red indicator light will appear. Press [▶||] to wake up the speaker.

**Adjusting the volume**  
• Press and hold the [+] button to increase the volume.  
• Press and hold the [-] button to decrease the volume.

**NOTE:** You may also adjust the volume from your mobile phone's volume control.

## Playing Music

To enjoy wireless music on your Bluetooth Speaker, make sure you are connected to a Bluetooth enabled device. Once connected you can press PLAY on your Bluetooth device or you can press the [▶||] button on the SBT605OR Bluetooth Speaker.

**NOTE:** Most media enabled smart phones will display "Connected to phone audio and media" when connecting to the Bluetooth Speaker. This means you can make phone calls and enjoy your music.

**Play / Pause**  
Press the [▶||] button to pause the music. To resume music playback, press the [▶||] button again.

**Adjusting the volume**  
• Press and hold the [+] button to increase the volume.  
• Press and hold the [-] button to decrease the volume.

**NOTE:** You may also adjust the volume from your mobile phone's volume control.

**Skipping Songs (With devices that have AVRCP Bluetooth profile)**

Quickpress the [▶▶] button to go to the next song  
Quickpress the [◀◀] button to go to the previous song.

## Using as a wired speaker

The SBT605OR can be used as a wired speaker by using the included 3.5mm Auxiliary Cord.

1. Plug one end of the Auxiliary Cord into the AUX IN jack located on the side of the speaker.
2. Plug the other end of the Auxiliary Cord into the headphone jack of any media device which has a 3.5 mm jack (this is standard headphone out jack).
3. Use your media device's music controls to control the music. When using the Auxiliary Cord the speaker buttons will not function.

## Troubleshooting Tips

**NOTE:** I can pair the Bluetooth Speaker with my Bluetooth device, but I cannot hear any music?

1. Make sure your Bluetooth device supports A2DP profile.
2. Turn up the volume on your Bluetooth device.
3. You may have to unpair the speaker, then re-pair to your device.

## Legal information

**FCC Part 15:**  
This equipment has been tested and found to comply with the requirements for a Class B digital device under Part 15 of the Federal Communications Commission (FCC) rules. These requirements are intended to provide reasonable protection against harmful interference in a residential installation. This equipment generates, uses and can radiate radio frequency energy and, if not installed and used in accordance with the instructions, may cause harmful interference to radio communications. However, there is no guarantee that interference will not occur in a particular installation. If this equipment does cause harmful interference to radio or television reception, which can be determined by turning the equipment off and on, the user is encouraged to try to correct the interference by one or more of the following measures:

- Re-orient or relocate the receiving antenna.
- Increase the separation between the equipment and receiver.
- Connect the equipment into an outlet on a circuit different from that to which the receiver is connected.
- Consult the dealer or an experienced radio/TV technician for help.

Do not attempt to repair or modify this equipment. Warning: Changes or modifications to this equipment not expressly approved by the party responsible for compliance could void the user's authority to operate the equipment. \*This device complies with Part 15 of the FCC Rules. Operation is subject to the following two conditions:

- (1) this device may not cause harmful interference, and
- (2) this device must accept any interference received, including interference that may cause undesired operation.\*

**FCC Radiation Exposure Statement**  
This equipment complies with FCC radiation exposure limits set forth for an uncontrolled environment. This equipment should be installed and operated with minimum distance 20cm between the radiator & your body

## Limited Warranty

**90 Days Limited Warranty**  
In the unlikely event that this product is defective, or does not perform properly, you may within ninety (90) days from your original date of purchase return it to the authorized service center for repair or exchange.

**TO OBTAIN WARRANTY SERVICE:**

- Provide proof of the date of purchase within the package (Dated bill of sale).
- Prepay all shipping costs to the authorized service center, and remember to insure your return.
- Include a return shipping address (no P.O. Boxes), a telephone contact number, and the defective unit within the package.
- Describe the defect or reason you are returning the product.

Your product will be repaired or replaced, at our option, for the same or similar model of equal value if examination by the service center determines this product is defective. Products received damaged as a result of shipping will require you to file a claim with the carrier.

The shipping address of the authorized service center is:  
**Southern Telecom, Inc.**  
**Attention: Customer Service (2nd Floor)**  
**14-C 53rd Street**  
**Brooklyn, NY 11232**

Warranty service not provided  
This warranty does not cover damage resulting from accident, misuse, abuse, improper installation or operation, lack of reasonable care, and unauthorized modification. This warranty is voided in the event any unauthorized person opens, alters or repairs this product. All products being returned to the authorized service center for repair must be suitably packaged.

**Limitation of Warranty:**  
• THE WARRANTY STATED ABOVE IS THE ONLY WARRANTY APPLICABLE TO THIS PRODUCT. ALL OTHER WARRANTIES, EXPRESS OR IMPLIED (INCLUDING ALL IMPLIED WARRANTIES OF MERCHANTABILITY OR FITNESS FOR A PARTICULAR PURPOSE) ARE HEREBY DISCLAIMED. NO VERBAL OR WRITTEN INFORMATION GIVEN BY AIT, INC. ITS AGENTS, OR EMPLOYEES SHALL CREATE A WARRANTY OR IN ANY WAY INCREASE THE SCOPE OF THIS WARRANTY.

Should you have any questions or problems concerning this product, please contact our customer service department at:

**Customer Support:**  
**1-877-768-8483 (Toll Free)**  
**cs@southern telecom.com**

Monday – Friday: 8AM – 10PM (EST)

www.southern telecom.com

**SHARPER IMAGE®**