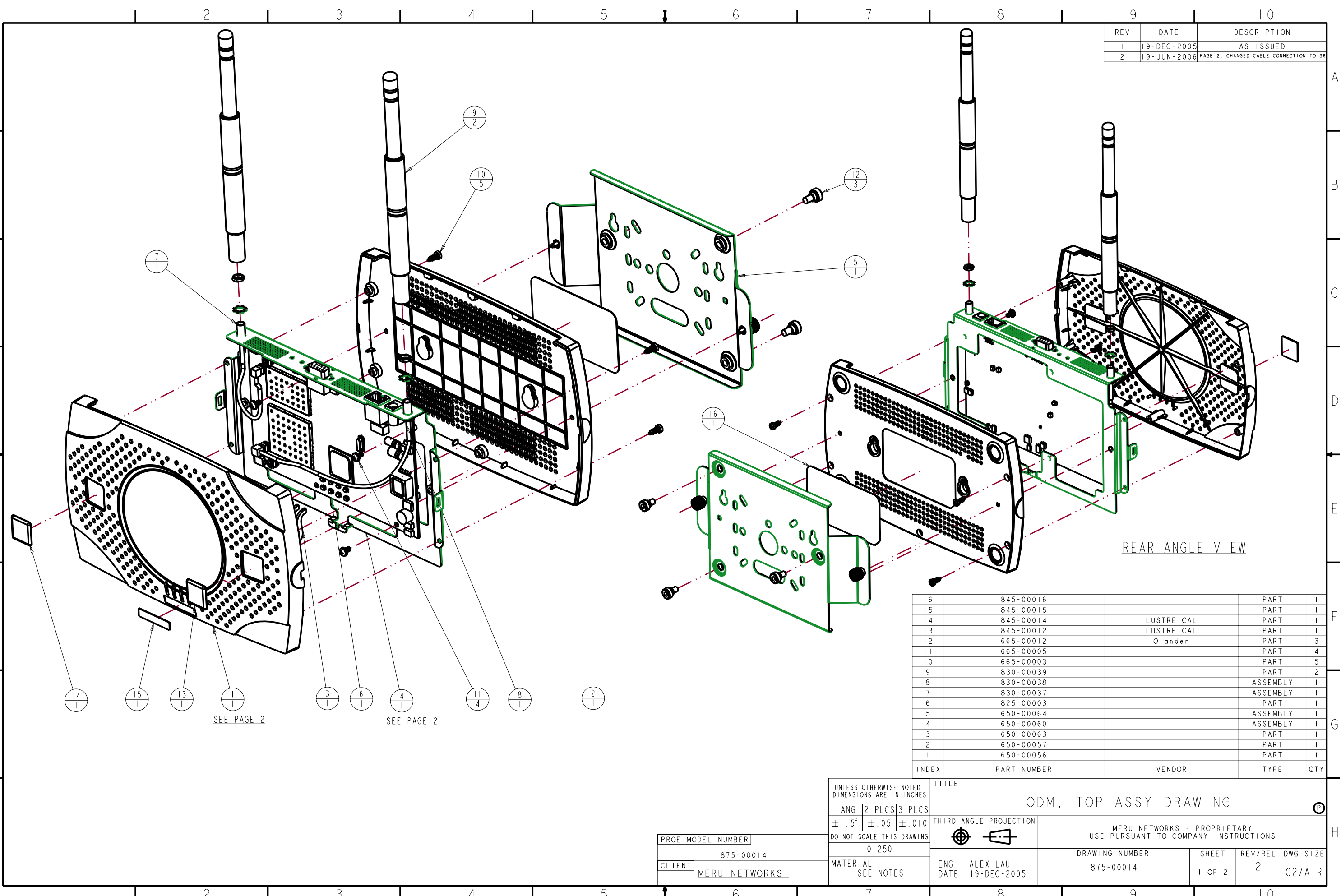


REV	DATE	DESCRIPTION
1	19-DEC-2005	AS ISSUED
2	19-JUN-2006	PAGE 2, CHANGED CABLE CONNECTION TO S6



REAR ANGLE VIEW

INDEX	PART NUMBER	VENDOR	TYPE	QTY
16	845-00016		PART	1
15	845-00015		PART	1
14	845-00014	LUSTRE CAL	PART	1
13	845-00012	LUSTRE CAL	PART	1
12	665-00012	Olander	PART	3
11	665-00005		PART	4
10	665-00003		PART	5
9	830-00039		PART	2
8	830-00038		ASSEMBLY	1
7	830-00037		ASSEMBLY	1
6	825-00003		PART	1
5	650-00064		ASSEMBLY	1
4	650-00060		ASSEMBLY	1
3	650-00063		PART	1
2	650-00057		PART	1
1	650-00056		PART	1

SEE PAGE 2

SEE PAGE 2

UNLESS OTHERWISE NOTED
DIMENSIONS ARE IN INCHES

ANG 2 PLCS 3 PLCS
±1.5° ±.05 ±.010

DO NOT SCALE THIS DRAWING
0.250

MATERIAL
SEE NOTES

TITLE
ODM, TOP ASSY DRAWING

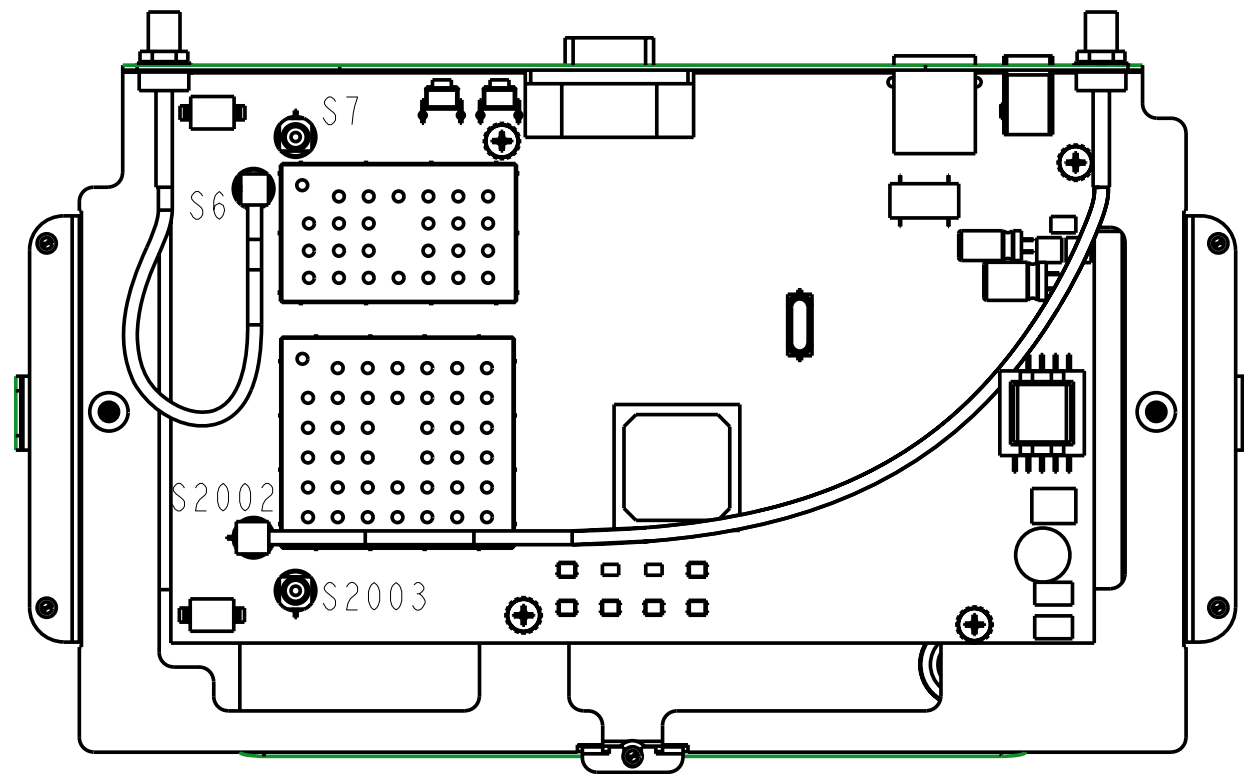
THIRD ANGLE PROJECTION

MERU NETWORKS - PROPRIETARY
USE PURSUANT TO COMPANY INSTRUCTIONS

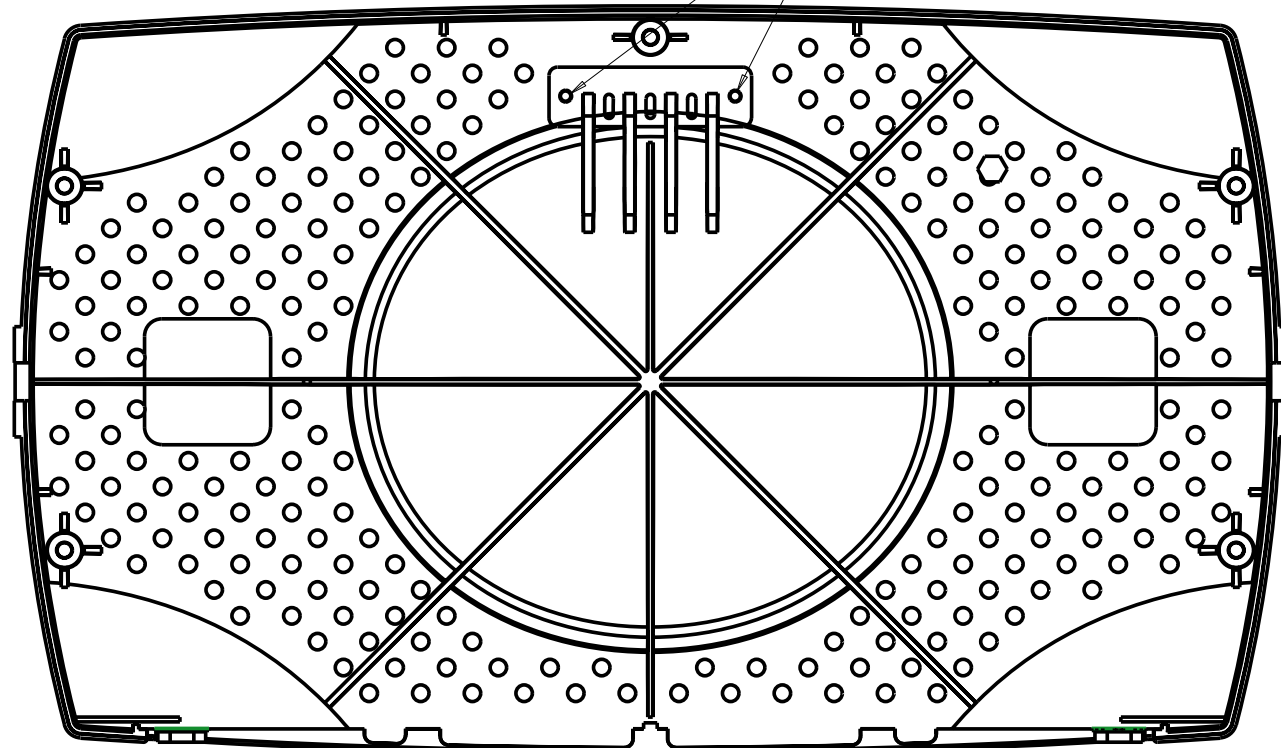
PROE MODEL NUMBER 875-00014	CLIENT MERU NETWORKS	ENG ALEX LAU	DATE 19-DEC-2005	DRAWING NUMBER 875-00014	SHEET 1 OF 2	REV/REL 2	DWG SIZE C2/AIR
--------------------------------	-------------------------	-----------------	---------------------	-----------------------------	-----------------	--------------	--------------------

PROE MODEL NUMBER	875-00014
CLIENT	MERU NETWORKS

CONNECT ITEMS 7 & 8 AS SHOWN



ASSEMBLE & JOIN ITEMS 1 & 3 BY HEAT STACKING THEM, BEFORE PROCEEDING WITH MAIN ASSEMBLY.



INSTALL ITEMS AS SHOWN

