

## **EXHIBIT C - EUT INTERNAL PHOTOGRAPHS**

---

**EUT Cover Off View**



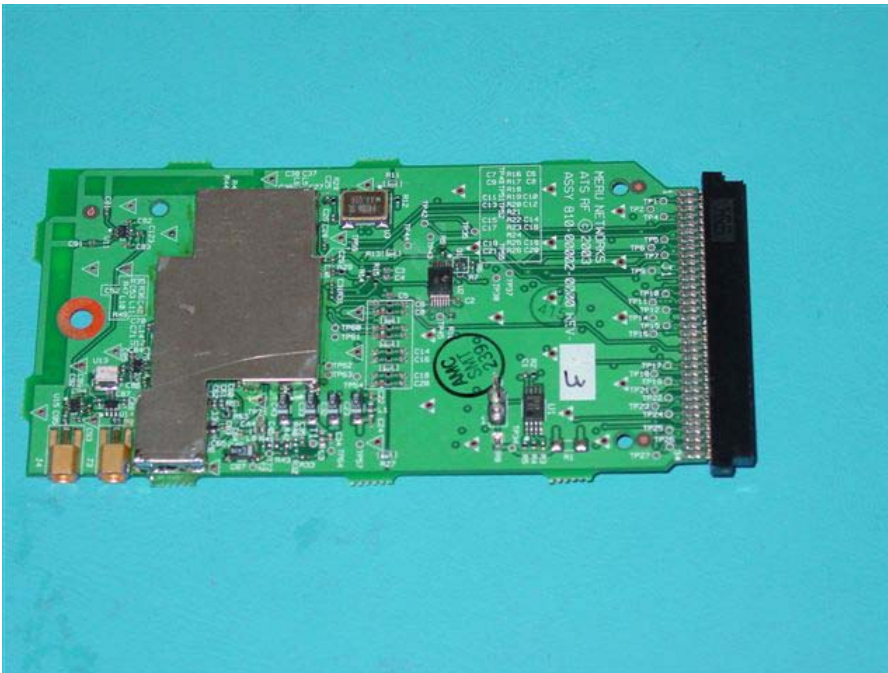
**Main Board Over All View**



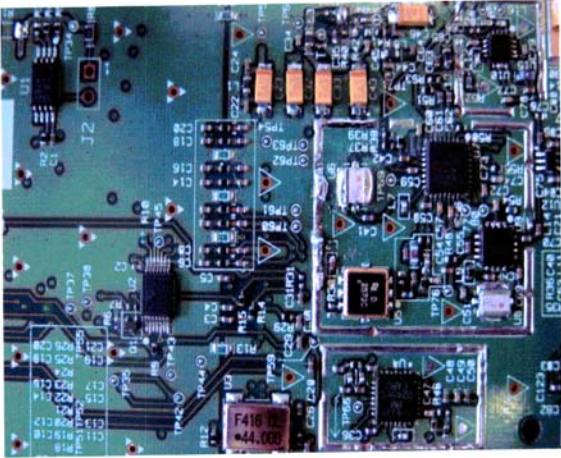
## Main Board Component View



## Transceiver Component View with Shielding

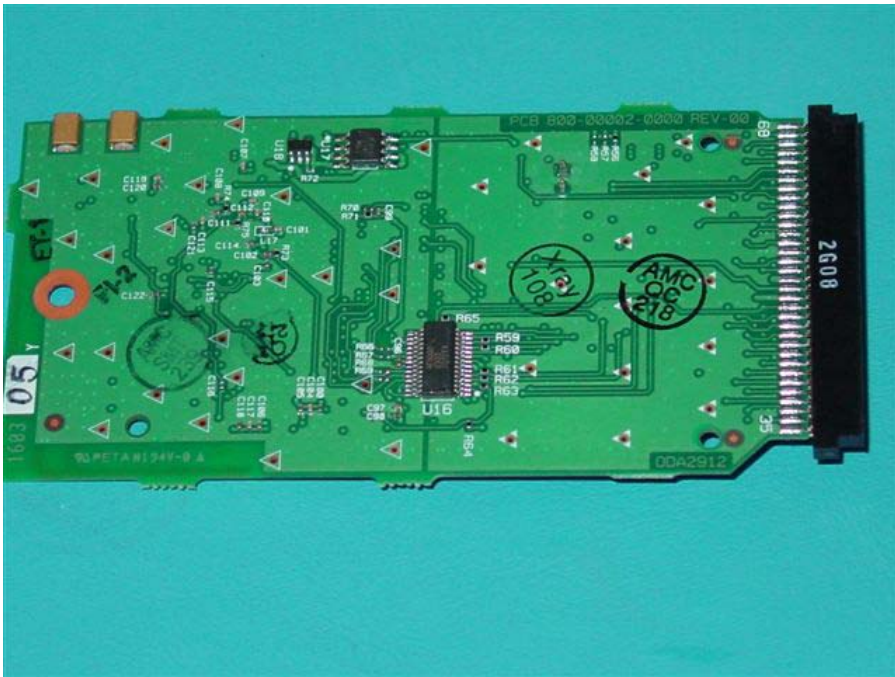


**Transceiver Component View without Shielding**

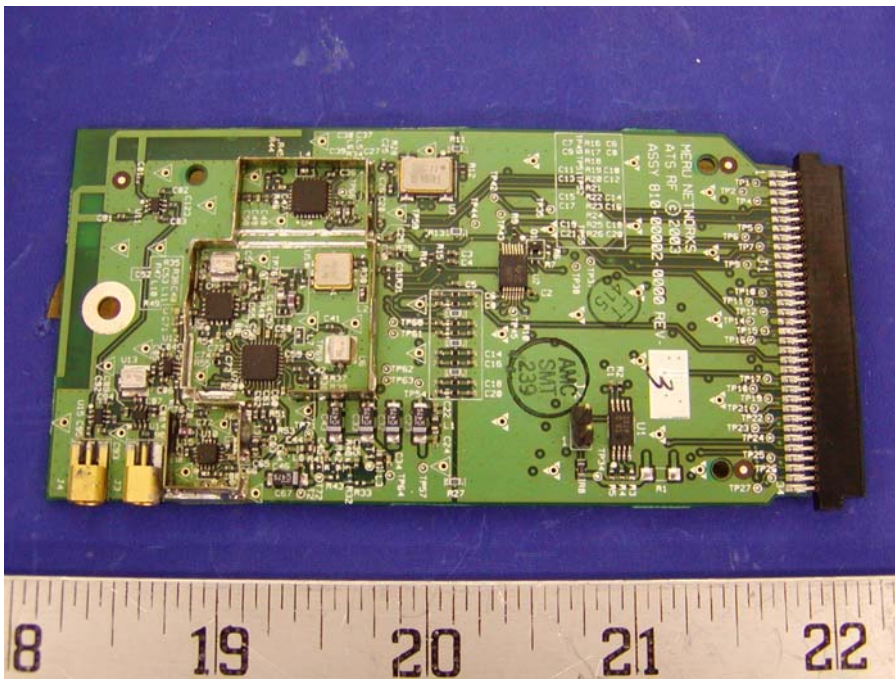




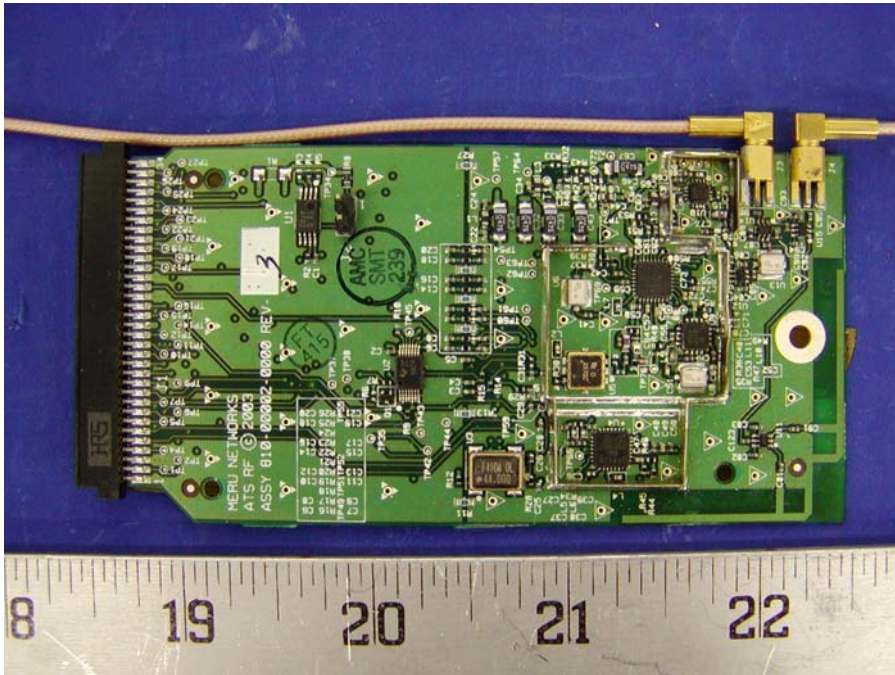
### Transceiver Solder View



### EUT Component View without Shielding



**EUT Component View without Shielding, with Antenna Cable**



**Antenna Connector View, Antenna Cable Inside (Reverse SMA)**

