

EUT – Cover Off View



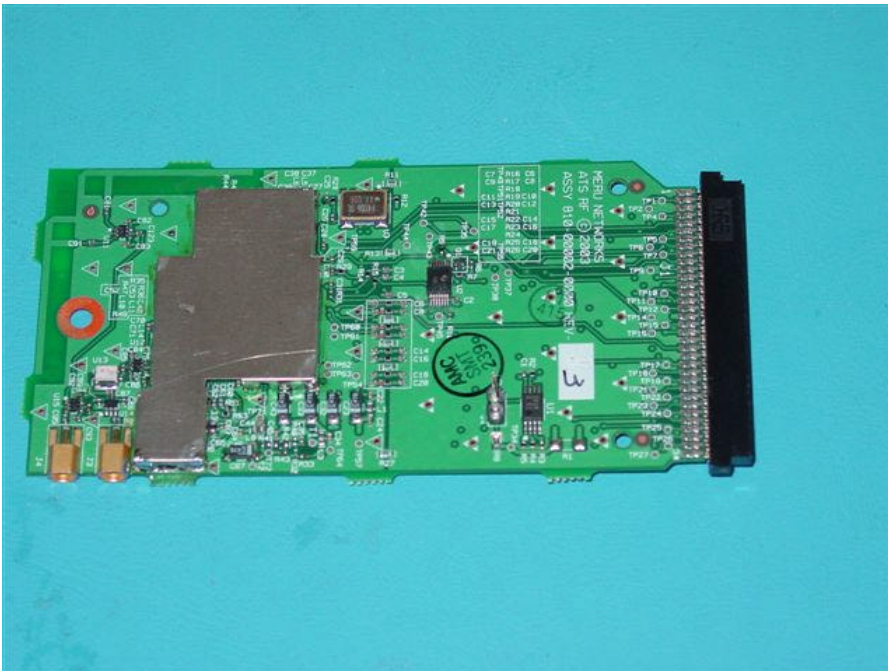
Main Board Over All View



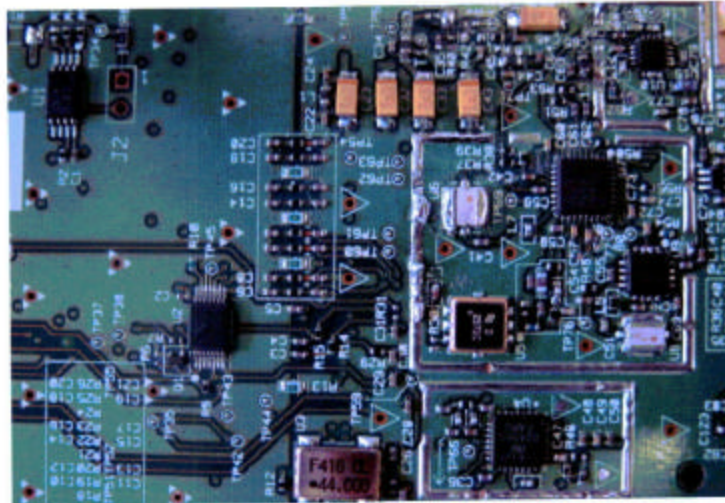
Main Board Component View



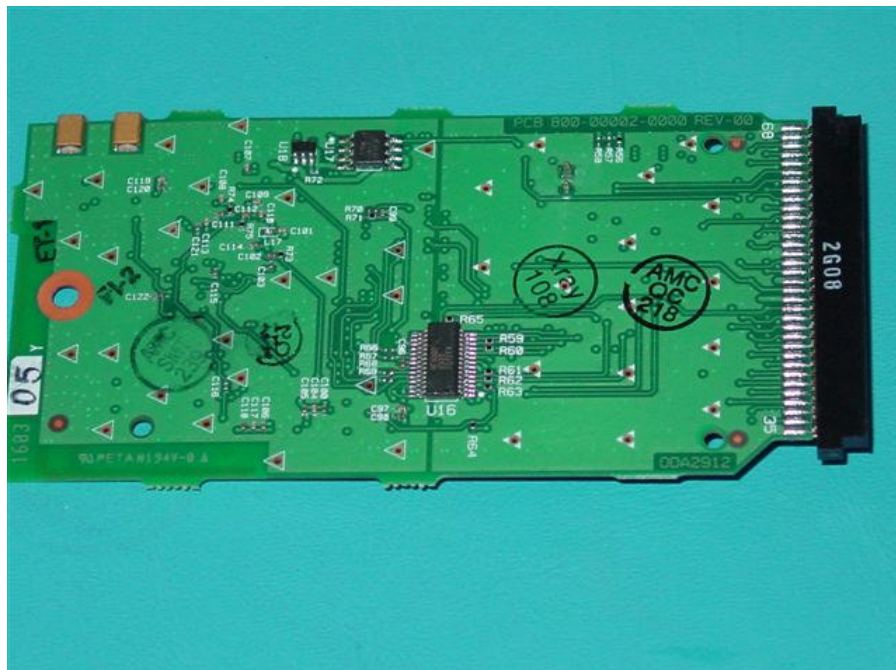
Transceiver Component View with Shielding



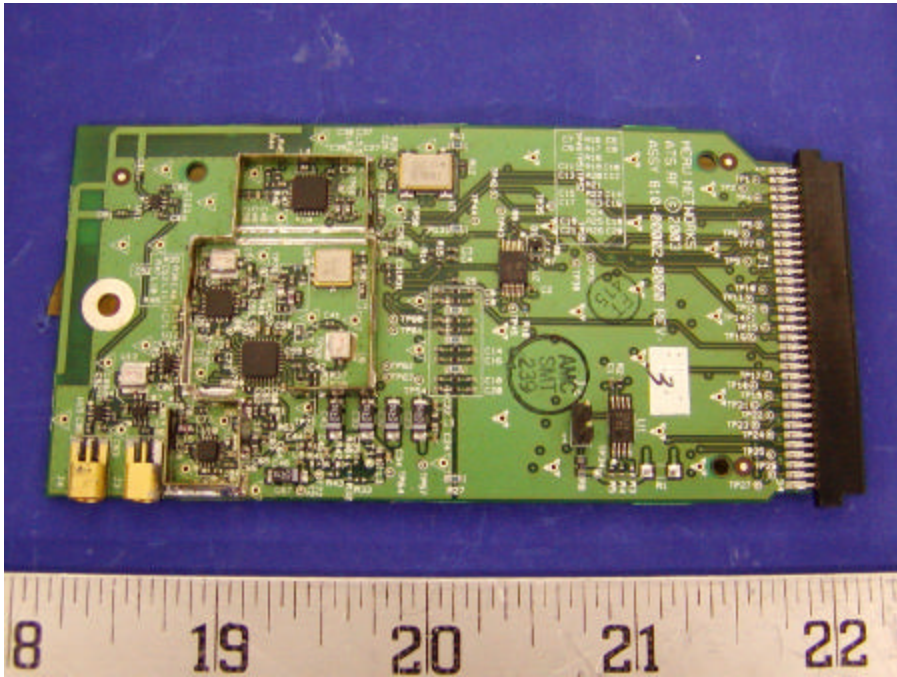
Transceiver Component View without Shielding



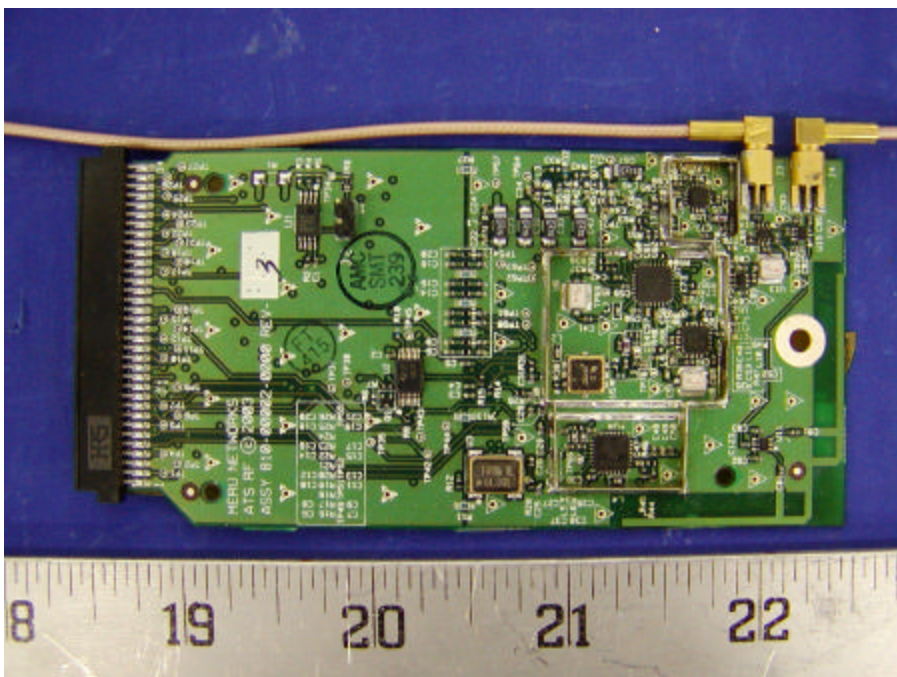
Transceiver Solder View



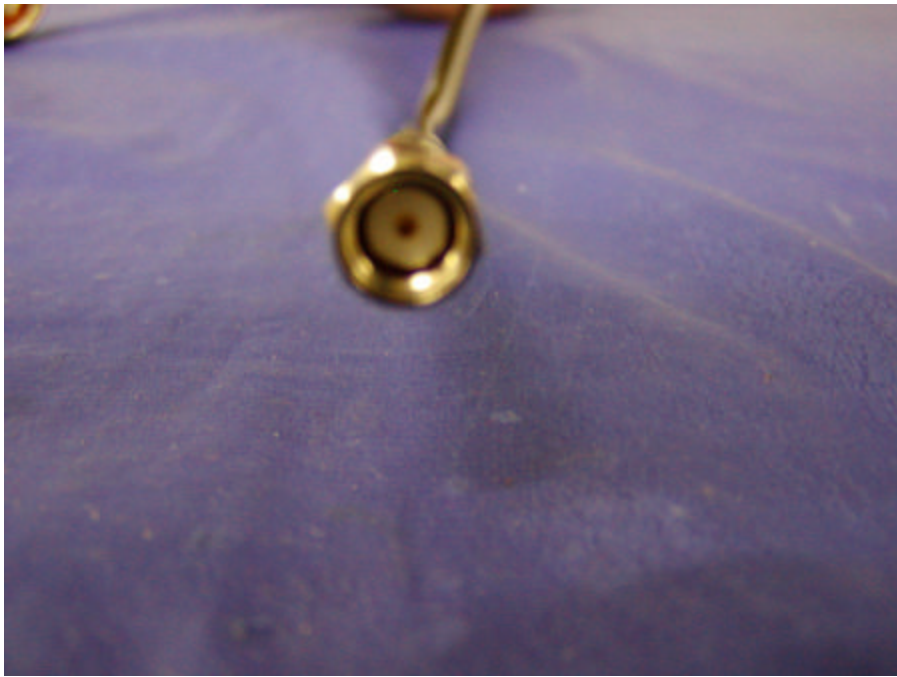
EUT Component View without Shielding



EUT Component View without Shielding, with Antenna Cable



Antenna Connector View, Antenna Cable Inside (Reverse SMA)



Antenna Connector View, EUT Side (Reverse SMA)

