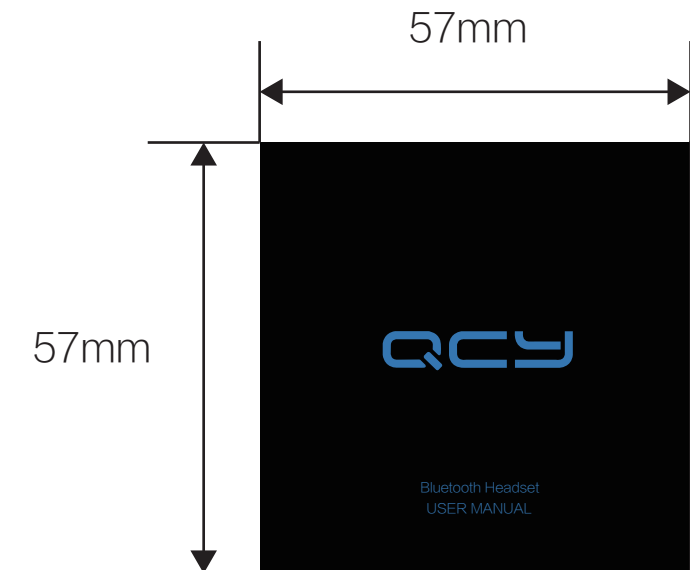
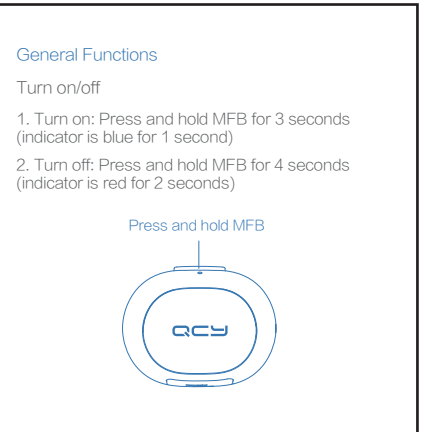
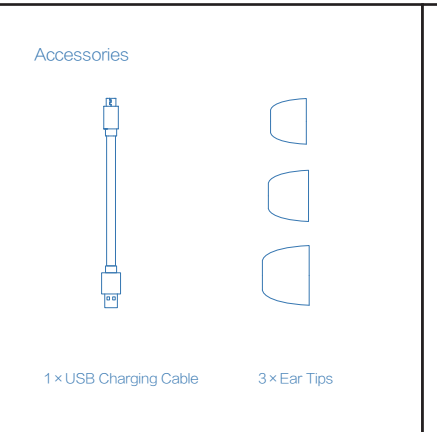
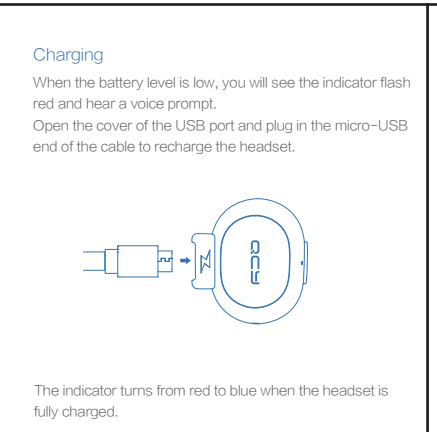
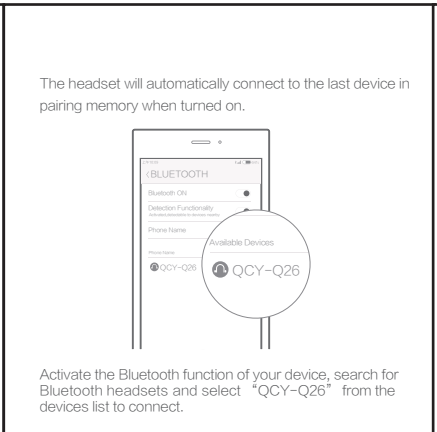
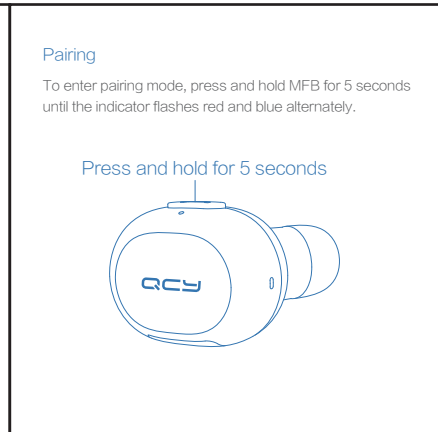
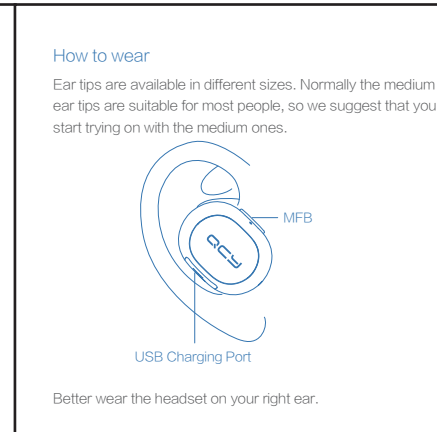
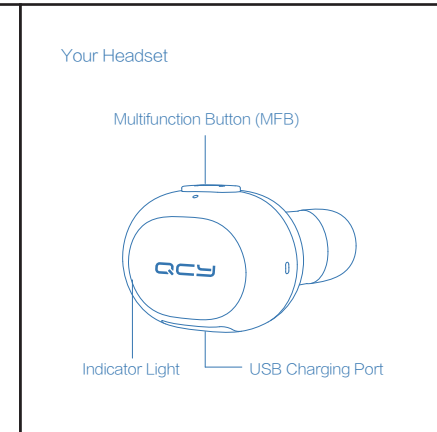


105g 哑粉



Introduction
Thank you for choosing Q26 Bluetooth headset. This manual will help you get the most out of the headset, but you'd better familiarize yourself with the Bluetooth function of your mobile phone or other devices before hand. Please read the manual carefully and keep it for future references.



Answer a call 📞
When there's an incoming call (indicator flashes blue), press MFB once.

End a call 📞
During a call, press MFB once.

Redial last number 📞
In standby mode, double press MFB.

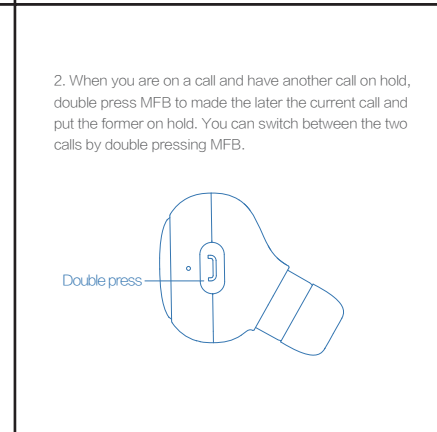
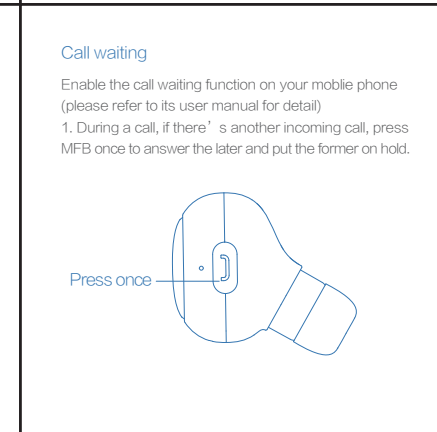
Reject a call 📞
When there's an incoming call (indicator flashes blue), press and hold MFB for 1 second.

Mute On/Off 📞 |
During a call, double press MFB.

Voice switching between headset and phone
During a call, press and hold MFB for 1 second.

Play music ▶
In standby mode, press MFB once.

Pause music ||
When playing music, press MFB once.



Charging Notes

1. Use a charger with DC5V output made by qualified manufacturer or any other USB power source to charge the headset.
2. The indicator light will turn red when charging, or blue when fully charged.
3. Repeated charging and discharging will degrade the battery performance. This is normal for all rechargeable batteries.

Basic Parameters

Bluetooth Version: V4.1 Standby Time: about 70 hours
 Battery Capacity: 45mAh Operating Range: 10m
 Talk Time: about 3 hours Weight: 4.9g
 Bluetooth Profile: HFP/A2DP/HSP/AVRCP

Safety Rules

1. Never disassemble or modify your headset for any reasons to avoid any damages and danger.
2. Keep the headset away from all kinds of liquid to avoid any damages.
3. Do not store the headset in extreme temperatures (under 0°C or over 45°C).
4. Do not use this headset during a thunderstorm to avoid irregular function and increased risk of electric shock.

After-Sales Service:
Should any manufacturing defects occur, please return the headset to us or our dealers for maintenance.

Warranty Card

Warranty period:
12 months from the date you purchase

Free service:
During the warranty period, if there is any breakdown caused by manufacturing defects, please contact us or our dealers to obtain free maintenance. You will always need this Warranty Card and your receipt or other proof of purchase to claim warranty.

Free maintenance won't be available under the following circumstances:

1. Without Warranty Card or intact maintenance label
2. Damage caused by improper disassembly or repair
3. Damage resulting from liquid or dropping, and other artificial mechanical defects
4. Damage caused by any force majeure

Customer service information:

Customer Name	
Customer Phone	
Customer Address	
Product Name	
Product Model Number	
Purchase Date	
Dealer	
Warranty Date	

Product standard: Q/HL 1-2016
 Manufacturer: Dongguan Hele Electronics Co., Ltd.
 Address: DalingYa Industrial Zone, Daojiao Town, Dongguan City, Guangdong, China
 Service Tel: 4008-306-708
 Zip Code: 523000

www.qcybluetooth.com

FCC Statement

This equipment has been tested and found to comply with the limits for a Class B digital device, pursuant to Part 15 of the FCC Rules. These limits are designed to provide reasonable protection against harmful interference in a residential installation. This equipment generates uses and can radiate radio frequency energy and, if not installed and used in accordance with the instructions, may cause harmful interference to radio communications. However, there is no guarantee that interference will not occur in a particular installation. If this equipment does cause harmful interference to radio or television reception, which can be determined by turning the equipment off and on, the user is encouraged to try to correct the interference by one or more of the following measures:

- Reorient or relocate the receiving antenna.
- Increase the separation between the equipment and receiver.
- Connect the equipment into an outlet on a circuit different from that to which the receiver is connected.
- Consult the dealer or an experienced radio/TV technician for help.

This device complies with part 15 of the FCC Rules. Operation is subject to the following two conditions:

(1) This device may not cause harmful interference, and (2) this device must accept any interference received, including interference that may cause undesired operation.

Changes or modifications not expressly approved by the party responsible for compliance could void the user's authority to operate the equipment.