

Three-way Calling and Switch Between Held Call and Active Call

1. Tap MFB to answer incoming call from cellphone1. Granting there is another incoming call from cellphone2, tap MFB to put the first call on hold while activate the second call.
2. Double tap MFB to switch between held call and active call.

Feature

- Chameleon paint makes the housing more brilliant and trendy.
- With new CSR Bluetooth v4.1 chip, you will get access to more wireless facilities.
- Three-way controller offers easy using experience.
- CVC smart noise isolation reveals crystal clear sound.

Parameter

Model: Q12
Bluetooth Version: V4.1
Operation Range: 10m
Standby Time: approx. 80hr
Weight: 5.26g
Size: 15 x 23 x 40 mm
Talk Time: approx. 3hr
Charging Time: approx. 1 or 2hr
Battery Type: Li-ion
Battery Capacity: 3.7V 40mAh
Bluetooth Profile: HFP/ HSP/A2DP/AVRCP
Input Parameter: 5V=35mA

After Service & Supports:

1. **Warranty Period**
1) Returning: 1 year after you purchase this item.
2) Repairing: 2 years after you purchase this item.
2. **Free Returning will Only be Accessed under All of Following Circumstances**
1) 1 year after you purchase this item.
2) Three completed guarantee receipts have to be provided to distributor (item model No., sales date and item serial No. shall be displayed on invoice and warranty card).
3) Required item has to be with full package and accessories.
4) Malfunction has to be caused by quality deficiencies.
Notes: Exchanged item will have the same model No. and spec. as your required one's.
3. **Free Repairing will Only be Accessed under All of Following Circumstances**
1) 2 years after you purchase this item.
2) Three completed guarantee receipts have to be provided to distributor (item model No., sales date and item serial

No. shall be displayed on invoice and warranty card).
3) Malfunction has to be caused by quality deficiencies.

Free repairing & returning will not be accessed under following circumstances

A: Item is out of warranty period or effective sales receipt and warranty card fail to be provided.
B: Breakdowns of housing, bags, gifts and accessories or any non-functional fault.
C: Unauthorized disassembly, breakdowns caused by improper operation or using in environment which is forbidden in user's manual.
D: Artificial damages (including but not limiting to leaking, damped, dropping off, squeezing, breaking, burning and distortion).
E: Faults caused by force majeure (such as earthquake, fire and flood).

Hazardous substances and their contents in the item

Part Name	(Pb)	(Hg)	(Cd)	(Cr(VI))	(PBB)	(PBDE)
Main body	X	O	O	O	O	O
Battery	O	O	O	O	O	O
Ear tips	O	O	O	O	O	O
Accessories	O	O	O	O	O	O
Charging cable	X	O	O	O	O	O

This form is made by SJ/T 11364 regulation.
O: means that hazardous substance content in the homogeneous materials of this part is within the limits of GB/T 26572 regulation.
X: means that hazardous substance content in, at least, one certain homogeneous material of this part is beyond the limits of GB/T 26572 regulation.

Lifespan:
As the booklet states, the eco-lifespan of the item is 5 years while using it in normal ways. During the period, no dangerous material will be leaked. The item must be recycled by the local law.
Notes: Please arrange using time properly as your hearing may be damaged by using the device for a long time.

Tips

1. Before using the headset, please read the manual carefully and keep it for future references.
2. The headset need to be fully charged prior to first-time use.
3. If the headset is left unused for over two weeks, please recharge it periodically.
4. Please use the chargers made by qualified manufacturer.
5. If the headset cannot be found by your phone, please check whether it is in pairing mode; if left unconnected for a long while, the headset will exit pairing mode, please re-enter the mode; if a procedure error of your phone occurs, reboot it; if a procedure error of the headset occurs, reboot or reset it.

Caution:
6. If the two units can not connect with each other automatically when switched on, please hold the MFB of both units until the white light is on then move them approaching each other and wait for the connection completed.

Caveats

1. Never disassemble or modify your headset for any reasons to avoid any damages and danger.
2. Do not store the headset in extreme temperatures (under 0°C or over 45°C).
3. Avoid using the indicator close to the eyes of children or animals.
4. Do not use this headset during a thunderstorm to avoid irregular function and increased risk of electric shock.
5. Do not use harsh chemicals or strong detergents to clean the headset.
6. Keep the headset dry.

FCC Statement

This equipment has been tested and found to comply with the limits for a Class B digital device, pursuant to Part 15 of the FCC Rules. These limits are designed to provide reasonable protection against harmful interference in a residential installation. This equipment generates uses and can radiate radio frequency energy and, if not installed and used in accordance with the instructions, may cause harmful interference to radio communications. However, there is no guarantee that interference will not occur in a particular installation. If this equipment does cause harmful interference to radio or television reception, which can be determined by turning the equipment off and on, the user is encouraged to try to correct the interference by one or more of the following measures:
- Reorient or relocate the receiving antenna.
- Increase the separation between the equipment and receiver.
- Connect the equipment into an outlet on a circuit different from that to which the receiver is connected.
- Consult the dealer or an experienced radio/TV technician for help.

This device complies with part 15 of the FCC Rules. Operation is subject to the following two conditions:

(1) This device may not cause harmful interference, and (2) this device must accept any interference received, including interference that may cause undesired operation.

Changes or modifications not expressly approved by the party responsible for compliance could void the user's authority to operate the equipment.

For any after service, please contact local distributor

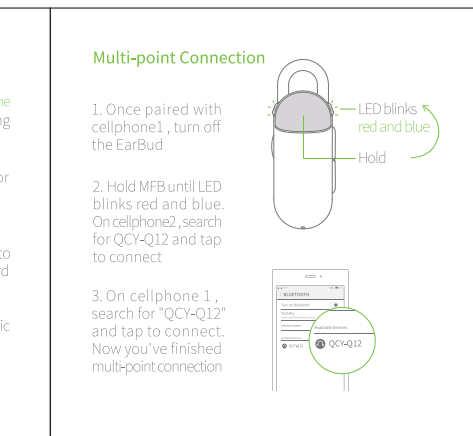
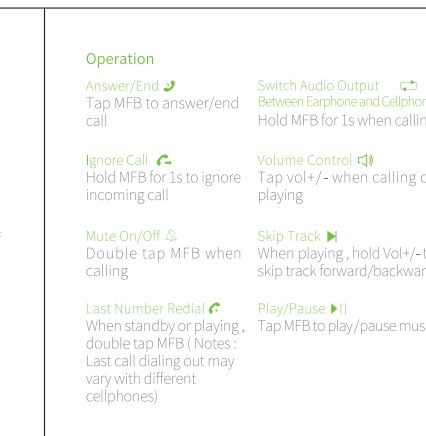
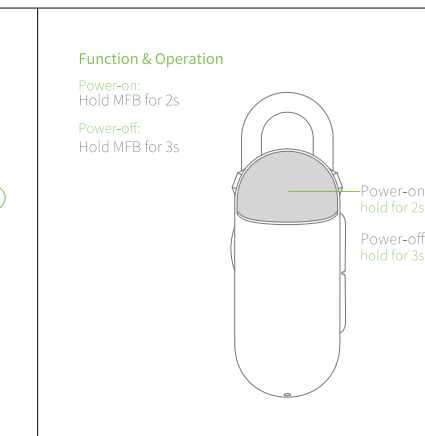
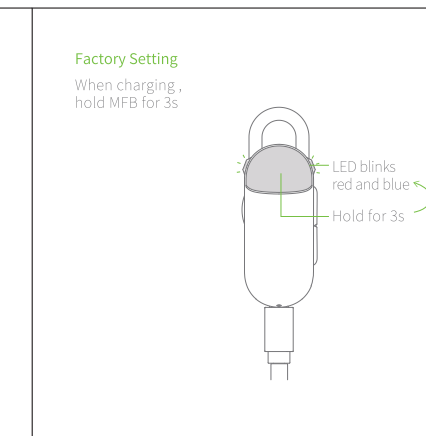
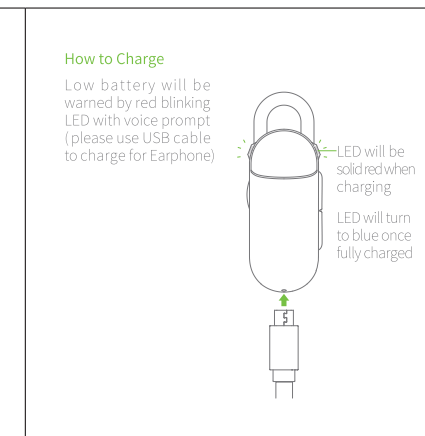
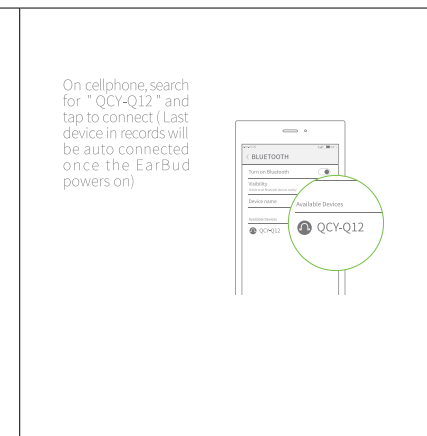
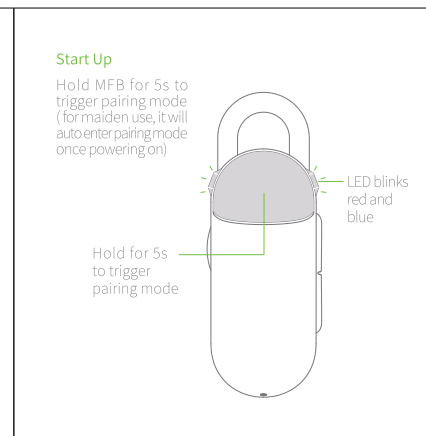
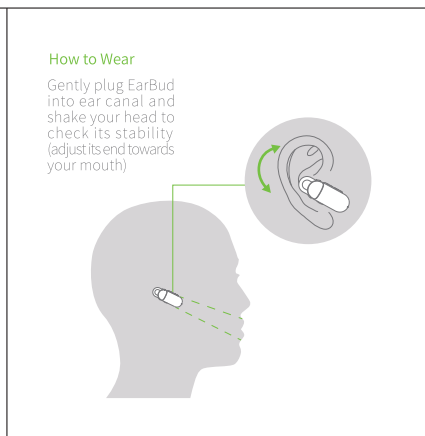
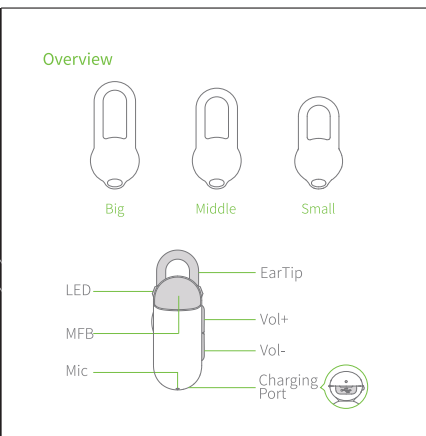
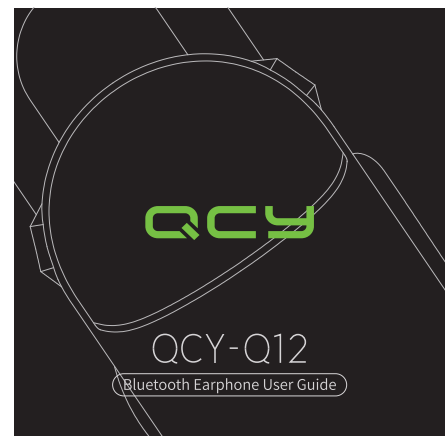
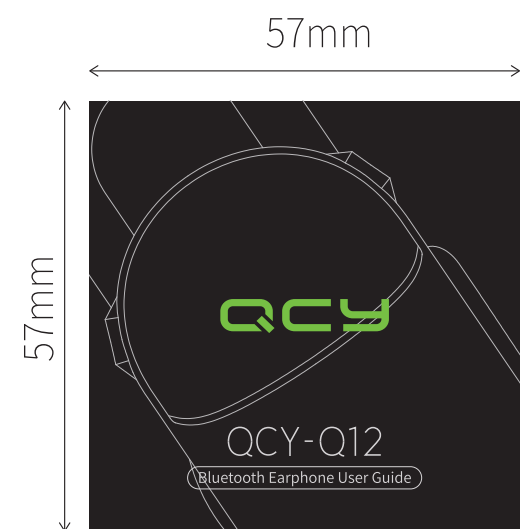
Perform standard: Q/HL 1-2016
Manufacturer: Dongguan Hele Electronics Co., Ltd.
Address: Daings Industrial Zone, Daojiao Town, Dongguan City, Guangdong Province | QCY Environmental Zone, Dayaling No.5, Yuehui Road

FCC ID: R09-Q12
RoHS CE



东莞市和乐电子有限公司

资料确认表	料号	30.001.000454	软件		法务	
	名称	Q12说明书	电子		品牌	
	材质	105g哑粉折叠页,	结构		包装	
	工艺	印QCY英文	声学			
	物料承认书编号		市场			



Three-way Calling and Switch Between Held Call and Active Call

1. Tap MFB to answer incoming call from cellphone1. Granting there is another incoming call from cellphone2, tap MFB to put the first call on hold while activate the second call.
2. Double tap MFB to switch between held call and active call.

Feature

- Chameleon paint makes the housing more brilliant and trendy.
- With new CSR Bluetooth v4.1 chip, you will get access to more wireless facilities.
- Three-way controller offers easy using experience.
- CVC smart noise isolation reveals crystal clear sound.

Parameter

Model: QCY-Q12
 Operation Range: 10m
 Weight: 5.26g
 Size: 15 x 23 x 40 mm
 Battery Type: Li-ion
 Bluetooth Profile: HFP/ HSP/A2DP/AVRCP

Bluetooth Version: V4.1
 Standby Time: approx. 80hr
 Talk Time: approx. 3hr
 Charging Time: approx. 1 or 2hr
 Battery Capacity: 3.7/40mAh
 Input Parameter: 5V/35mA

After Service & Supports:

1. **Warranty Period**
 1) Returning: 1 year after you purchase this item.
 2) Repairing: 2 years after you purchase this item.
2. **Free Returning will Only be Accessed under All of Following Circumstances**
 1) 1 year after you purchase this item.
 2) Three completed guarantee receipts have to be provided to distributor (item model No., sales date and item serial No. shall be displayed on invoice and warranty card).
 3) Required item has to be with full package and accessories.
 4) Malfunction has to be caused by quality deficiencies.
 Notes: Exchanged item will have the same model No. and spec. as your required one's.
3. **Free Repairing will Only be Accessed under All of Following Circumstances**
 1) 2 years after you purchase this item.
 2) Three completed guarantee receipts have to be provided to distributor (item model No., sales date and item serial

No. shall be displayed on invoice and warranty card).
 3) Malfunction has to be caused by quality deficiencies.

Free repairing & returning will not be accessed under following circumstances

A: Item is out of warranty period or effective sales receipt and warranty card fail to be provided.
 B: Breakdowns of housing, bags, gifts and accessories or any non-functional fault.
 C: Unauthorized disassembly, breakdowns caused by improper operation or using in environment which is forbidden in user's manual.
 D: Artificial damages (including but not limiting to leaking, damped, dropping off, squeezing, breaking, burning and distortion).
 E: Faults caused by force majeure (such as earthquake, fire and flood).

Hazardous substances and their contents in the item

Part Name	(Pb)	(Hg)	(Cd)	(Cr(VI))	(PBB)	(PBDE)
Main body	X	O	O	O	O	O
Battery	O	O	O	O	O	O
Ear tip	O	O	O	O	O	O
Accessories	O	O	O	O	O	O
Charging cable	X	O	O	O	O	O

This form is made by SJ/T 11364 regulation.
 O: means that hazardous substance content in the homogeneous materials of this part is within the limits of GB/T 26572 regulation.
 X: means that hazardous substance content in, at least, one certain homogeneous material of this part is beyond the limits of GB/T 26572 regulation.

Lifespan:
 As the booklet states, the eco-lifespan of the item is 5 years while using it in normal ways. During the period, no dangerous material will be leaked. The item must be recycled by the local law.
 Notes: Please arrange using time properly as your hearing may be damaged by using the device for a long time.

Tips

1. Before using the headset, please read the manual carefully and keep it for future references.
2. The headset need to be fully charged prior to first-time use.
3. If the headset is left unused for over two weeks, please recharge it periodically.
4. Please use the chargers made by qualified manufacturer.
5. If the headset cannot be found by your phone, please check whether it is in pairing mode; if left unconnected for a long while, the headset will exit pairing mode, please re-enter the mode; if a procedure error of your phone occurs, reboot it; if a procedure error of the headset occurs, reboot or reset it.

Caution:
 6. If the two units can not connect with each other automatically when switched on, please hold the MFB of both units until the white light is on then move them approaching each other and wait for the connection completed.

Caveats

1. Never disassemble or modify your headset for any reasons to avoid any damages and danger.
2. Do not store the headset in extreme temperatures (under 0°C or over 45°C).
3. Avoid using the indicator close to the eyes of children or animals.
4. Do not use this headset during a thunderstorm to avoid irregular function and increased risk of electric shock.
5. Do not use harsh chemicals or strong detergents to clean the headset.
6. Keep the headset dry.

FCC Statement

This equipment has been tested and found to comply with the limits for a Class B digital device, pursuant to Part 15 of the FCC Rules. These limits are designed to provide reasonable protection against harmful interference in a residential installation. This equipment generates uses and can radiate radio frequency energy and, if not installed and used in accordance with the instructions, may cause harmful interference to radio communications. However, there is no guarantee that interference will not occur in a particular installation. If this equipment does cause harmful interference to radio or television reception, which can be determined by turning the equipment off and on, the user is encouraged to try to correct the interference by one or more of the following measures:
 - Reorient or relocate the receiving antenna.
 - Increase the separation between the equipment and receiver.
 - Connect the equipment into an outlet on a circuit different from that to which the receiver is connected.
 - Consult the dealer or an experienced radio/TV technician for help.

This device complies with part 15 of the FCC Rules. Operation is subject to the following two conditions:

(1) This device may not cause harmful interference, and (2) this device must accept any interference received, including interference that may cause undesired operation.

Changes or modifications not expressly approved by the party responsible for compliance could void the user's authority to operate the equipment.

For any after service, please contact local distributor

Perform standard: Q/HL 1-2016
 Manufacturer: Dongguan Hele Electronics Co., Ltd.
 Address: Daizong Industrial Zone, Daojiao Town, Dongguan City, Guangdong Province | QCY Environmental Zone, Dayaling No.5, Yuehui Road

FCC ID: R09-Q15
 RoHS CE



东莞市和乐电子有限公司

资料确认表	料号	30.001.000454	软件		法务	
	名称	Q12说明书	电子		品牌	
	材质	105g哑粉折叠页,	结构		包装	
	工艺	印QCY英文	声学			
	物料承认书编号		市场			