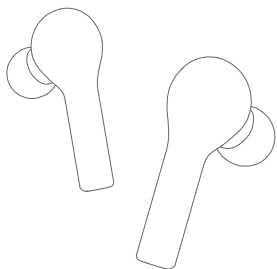


QCY

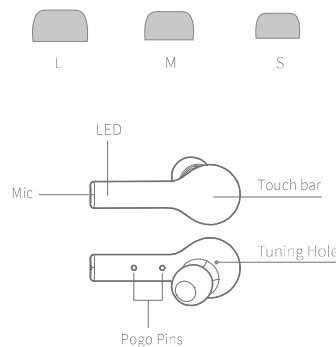
QCY-T5
True Wireless Earphones



For better using experience, please scan to download QCY app before start-up.

Overview

Choose Your Eartips



Please try medium eartips first as they fit most people.

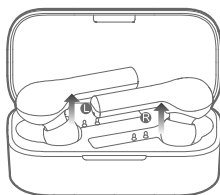
How to Connect

First Time Pairing:

1. Pick up both earbuds then re-insert them into the case. Once again, pick them up to activate them.
2. On cellphone, search for QCY-T5 Pro and tap to connect. *Once paired earbuds will auto power on upon picking up from the case. If earbuds fail to auto power on, please charge them and try again.

Switch Paired Device:

1. Turn off phoneA's Bluetooth faculty and earbuds will auto disconnect and enter into pairing mode.
2. On phoneB, search for QCY-T5 Pro and tap to connect. *Multi-point connection is not available. Earbuds will auto connect to phoneB upon powering up again.



Factory Setting

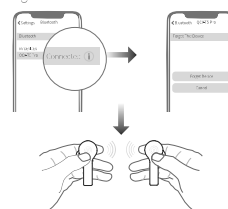
(Try the following steps to fix connectivity issue)

Set to factory:

1. On cellphone, search for QCY-T5 Pro, tap and choose ignore or cancel pairing.
2. Pick up two earbuds, keep touching both bars for 8s or until LEDs glow red for 2s to power off.
3. Keep touching both bars for 10s or until LEDs blink red and green 3 times then blink red to set earbuds to factory. *Please refer "First Time Pairing" to connect after factory setting.

Manual Pairing (please refer the following steps in case two earbuds lose connection)

Power off earbuds then keep touching panels for 5s or until LEDs blink red and green. After then, double touch panels and LEDs will blink red and green. Two earbuds will then auto pair with each other when LED on master earbud blinks red and green and the other one turns off.



How to Wear



1. Rotate earbud and pop it into your ear then shake head to check wearing stability.
2. Please adjust mic towards your mouth to gain better calling experience.

Three-way Calling & Switch

Double touch the bar to answer incoming call. If another call is coming in sync, double touch again to put the first call on hold while activating the second one or keep touching the bar for 2s to ignore the second call. Keep touching the bar for 2s to switch between active call and held call.

Mono Mode

1. Power off earbud then keep touching the bar for 5s to enter pairing mode (LED blinks red and green)
2. On cellphone, search for QCY-T5 Pro
3. Tap to connect

Charging Earbud

Push earbud into the case to charge. LED will glow solid red when charging and turn to green for 1 minute once top up.

Charging the Case

When the power is less than 30%, the two green lights of the charging box flash; when the power is between 30% and 90%, the left light is always on green, the right light is blinking; when the power is more than 90%, the two green lights on the charging case are always on.

※ T5 Pro is within a wireless charging case.

Functions

Functions	Current status	Operation	LED	Prompt
Power-on	Earbuds are not in the case	Keep touching the panel for 2s	LED blinks blue	TONE
	Earbuds are in the case with its lid closed (the case is within power)	Open the lid		
Power-off	Case is within power	Push earbuds into case and close the lid	LED glows solid red when charging	\
	/	Keep touching the panel for 5s	LED glows red for 2s	TONE
Answer/end call	Incoming call/ calling	Double touch the panel to answer/end the call	\	TONE
Ignore call	Incoming call	Keep touching the panel for 1.5s	\	TONE
Voice assistant	Connected	Triple touch left panel	\	TONE
Music pause/ resume playing	Playing	1. Double touch 2. Put off either earbud to pause and put it on in 15s to resume playing	\	\
Skip track forward	Playing	Keep touching either panel to skip track forward	\	\
Gaming mode	Connected	Triple touch right panel to turn on/off gaming mode	\	TONE

Warranty Card

Warranty Period
12 months after you purchase this item. (or you may inquire your local shopper for more details.)
Free Service:
Supposing any defects caused by quality issues occur within the warranty period, please take this warranty card and purchase receipts to your distributor for free exchange service.

Model Number:
Date of Purchasing:
User's Name:
User's Phone:
User's Address:
Shop's Name:
Shop's Address:
Comments:

Free exchange service will not be accessed under following circumstances:
1. Damages caused unauthorized disassembly.
2. Defects or physical damages caused by leaking or dropping off.
3. Damages by act of God. Supposing your item is within any damages or defects except the above circumstances, please return to us or your distributor for free repairing.

FCC Statement

This equipment has been tested and found to comply with the limits for a Class B digital device, pursuant to Part 15 of the FCC Rules. These limits are designed to provide reasonable protection against harmful interference in a residential installation. This equipment generates uses and can radiate radio frequency energy and, if not installed and used in accordance with the instructions, may cause harmful interference to radio communications. However, there is no guarantee that interference will not occur in a particular installation. If this equipment does cause harmful interference to radio or television reception, which can be determined by turning the equipment off and on, the user is encouraged to try to correct the interference by one or more of the following measures:

- Reorient or relocate the receiving antenna.
- Increase the separation between the equipment and receiver.
- Connect the equipment into an outlet on a circuit different from that to which the receiver is connected.
- Consult the dealer or an experienced radio/TV technician for help.

This device complies with part 15 of the FCC Rules. Operation is subject to the following two conditions:
(1) This device may not cause harmful interference, and (2) this device must accept any interference received, including interference that may cause undesired operation.

Changes or modifications not expressly approved by the party responsible for compliance could void the user's authority to operate the equipment.

FCC ID: RDR-IN2029

Hazardous substances and their contents in the item

Part Name	Hazardous Substances									
	Pb	Hg	Cd	Cr (VI)	PBB	PBDE	DEHP	DBP	BBP	BBP
Main body	X	O	O	O	O	O	O	O	O	O
Battery	O	O	O	O	O	O	O	O	O	O
Ear tips	O	O	O	O	O	O	O	O	O	O
Accessories	O	O	O	O	O	O	O	O	O	O
Charging cable	X	O	O	O	O	O	O	O	O	O

This form is made by SJ/T 11364 regulation.
O: means that hazardous substance content in the homogeneous materials of this part is within the limits of (EU) 2015/863 regulation.
X: means that hazardous substance content in ,at least, one certain homogeneous material of this part is beyond the limits of (EU) 2015/863 regulation, but there is no mature alternative in the industry at present, it still conforms to the EU ROHS Directive in the scope of exemption.

Notes: Please arrange using time properly as your hearing may be damaged by using the device for a long time.

Manufacturer: Dongguan Hele Electronics Co., Ltd.
Address: Daojiao Town, Dongguan City, Guangdong, China

Tips

1. Before using the headset, please read the manual carefully and keep it for future references.
2. The headset need to be fully charged prior to first-time use.
3. If the headset is left unused for over two weeks, please recharge it periodically.
4. Please use the chargers made by qualified manufacturer.
5. If the headset cannot be found by your phone, please check whether it is in pairing mode; if left unconnected for a long while, the headset will exit pairing mode, please re-enter the mode; if a procedure error of your phone occurs, reboot the mode; if a procedure error of the headset occurs, reboot or reset it.

Caveats

1. Never disassemble or modify your headset for any reasons to avoid any damages and danger.
2. Do not store the headset in extreme temperatures (under 0°C or over 45°C).
3. Avoid using the indicator close to the eyes of children or animals.
4. Do not use this headset during a thunderstorm to avoid irregular function and increased risk of electric shock.
5. Do not use harsh chemicals or strong detergents to clean the headset.
6. Keep the headset dry.

