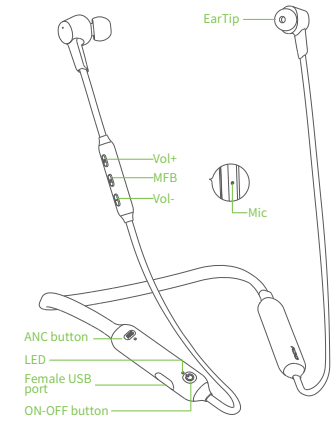
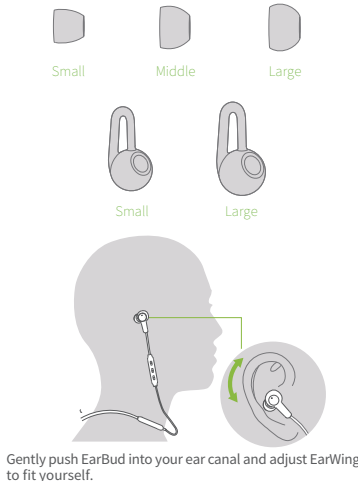


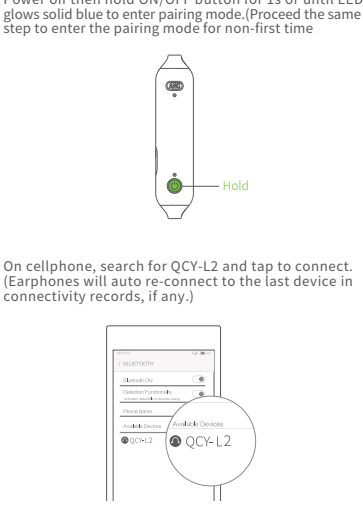
Start-up
Overview



Choose EarTips



How to Connect



ANC

ANC ON

Power on the earphones, press ANC button to switch on ANC (LED glows solid white).



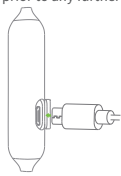
ANC OFF

Press ANC button again to switch off ANC (white LED turns off).



How to Charge

Low battery will be warned by red blinking LED. LED will glow solid red when charging and turn to blue once topped up. Warning: if any sweat or other liquid stays on the port, please dry it prior to any further charging.



Factory Setting

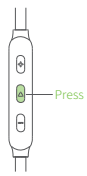
Hold ON/OFF button for 3s or until LED blinks red and blue when charging.



Functions

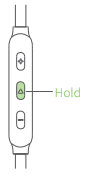
Answer Call

Press MFB to answer incoming call (LED blinks blue slowly).



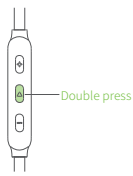
Ignore Call

Hold MFB for 1.5s to ignore incoming call(LED blinks blue slowly).



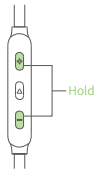
Mute on/off

When calling, double press MFB to switch mute on/off.



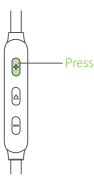
Skip Track

When playing, hold Vol+/- to skip track forward/backward.

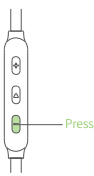


Volume Control

When calling or playing, press Vol+ to tune up.

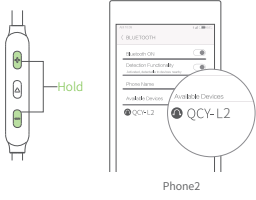


When calling or playing, press Vol- to tune down.



Multi-point Connection

Refer How to Connect to build connection with phone1, hold both Vol+ and Vol- for 3s or until LED blinks red and blue. On phone2, search for QCY-L2 and tap to connect.



Once finish the above step, tap QCY-L2 on phone1 to finish multi-point connection.



Three-way Calling

Press MFB to answer incoming call from phone1. If another call is coming in sync,press MFB to put the first call on hold while activate the second call. Double press MFB to switch between held call and active call.

Power-on

Hold ON/OFF button for 1s(LED will turn on blue for 1s).

Power-off

Hold ON/OFF button for 3s(LED will turn on red for 2s).

Playback/pause

When playing, press MFB to pause/resume playback.

Voice Assistant

When standby, double press MFB to activate voice assistant (like Siri).

Switch Audio Output

When calling, hold MFB for 1s to switch audio output between earphones and cellphone.

Features

ANC technology keeps you away from noise

With CSR v5.0 chipset, it features rich wireless functions

Independent ceramic antenna secures stable and clear talking

TEP cable is soft yet stretching & wear resistance

Basic Parameters (ANC ON/OFF)

Model:In1812
Bluetooth version: v5.0
Standby time: approx.63hr/350hr(ANC ON/OFF)
Talk time: approx. 10hr/13hr(ANC ON/OFF)
Playback time: approx. 8 - 10hr(ANC ON)/10 - 12hr(ANC OFF)
Battery capacity:3.7V 210mAh
Bluetooth profiles: A2DP v1.3.1/AVRCP v1.6/HFP v1.7/HSP v1.2
Battery type: li-ion
(All technical data shall be subject to practical performance.)

Basic Parameter

Bluetooth version:V5.0
Charging time: approx. 2hr
Standby time: approx. 200hr
Bluetooth profiles:HFP/A2DP/HSP/AVRCP
Battery type: li-ion
(All technical data shall be subject to practical performance)

Tips

- Before using the headset, please read the manual carefully and keep it for future references.
- The headset need to be fully charged prior to first-time use.
- If the headset is left unused for over two weeks, please recharge it periodically.
- Please use the chargers made by qualified manufacturer.
- If the headset cannot be found by your phone, please check whether it is in pairing mode; if left unconnected for a long while, the headset will exit pairing mode, please re-enter the mode; if a procedure error of your phone occurs, reboot it; if a procedure error of the headset occurs, reboot or reset it.

Caveats

- Never disassemble or modify your headset for any reasons to avoid any damages and danger.
- Do not store the headset in extreme temperatures (under 0°C or over 45°C).
- Avoid using the indicator close to the eyes of children or animals.
- Do not use this headset during a thunderstorm to avoid irregular function and increased risk of electric shock.
- Do not use harsh chemicals or strong detergents to clean the headset.
- Keep the headset dry.

Hazardous substances and their contents in the item

Part Name	Hazardous Substances					
	(Pb)	(Hg)	(Cd)	(Cr(VI))	(PBB)	(PBDE)
Main body	X	O	O	O	O	O
Battery	O	O	O	O	O	O
Ear tips	O	O	O	O	O	O
Accessories	O	O	O	O	O	O
Charging cable	X	O	O	O	O	O

This form is made by SJ/T 11364 regulation.
O: means that hazardous substance content in the homogeneous materials of this part is within the limits of GB/T 26572 regulation.
X: means that hazardous substance content in, at least, one certain homogeneous material of this part is beyond the limits of GB/T 26572 regulation.

Notes: Please arrange using time properly as your hearing may be damaged by using the device for a long time.

Perform standard: Q/HL 1-2016
Manufacturer: Dongguan Hele Electronics Co., Ltd.
Address: Daojiao Town, Dongguan City, Guangdong, China

Warranty Card

Warranty Period
12 months after you purchase this item.(or you may inquire your local shopper for more details.)

Free Service:
Supposing any defects caused by quality issues occur within the warranty period, please take this warranty card and purchase receipts to your distributor for free exchange service.

Model Number:
Date of Purchasing:
User's Name:
User's Phone:
User's Address:
Shop's Name:
Shop's Address:
Comments:

Free exchange service will not be accessed under following circumstances:
1. Damages caused unauthorized disassembly.
2. Defects or physical damages caused by leaking or dropping off.
3. Damages by act of God.Supposing your item is within any damages or defects except the above circumstances, please return to us or your distributor for free repairing.

FCC Statement

This equipment has been tested and found to comply with the limits for a Class B digital device, pursuant to Part 15 of the FCC Rules. These limits are designed to provide reasonable protection against harmful interference in a residential installation. This equipment generates uses and can radiate radio frequency energy and, if not installed and used in accordance with the instructions,may cause harmful interference to radio communications. However, there is no guarantee that interference will not occur in a particular installation. If this equipment does cause harmful interference to radio or television reception, which can be determined by turning the equipment off and on, the user is encouraged to try to correct the interference by one or more of the following measures:
— Reorient or relocate the receiving antenna.
— Increase the separation between the equipment and receiver.
— Connect the equipment into an outlet on a circuit different from that to which the receiver is connected.
— Consult the dealer or an experienced radio/TV technician for help.

This device complies with part 15 of the FCC Rules. Operation is subject to the following two conditions:
(1) This device may not cause harmful interference, and (2) this device must accept any interference received, including interference that may cause undesired operation.

Changes or modifications not expressly approved by the party responsible for compliance could void the user's authority to operate the equipment.

