



Shenzhen Yuhong Industrial Co., LTD

## Specification of parts

Customer name:	Dongguan Hele Electronics Co., LTD
Product Model:	HT10
Risuntek P/N:	
Version:	A1
Product Name:	FPC antenna
Description:	BT2400-FPCB Built-in Bluetooth Headset antenna (HT10)
Date:	2023/12/25

(Customer Signatures)

(PM)	(ME)	(QE)

(Our signature)

(QE)	(ME)	(RF)
lily	Cindy	James

Address: 1308, Block A, Zhantao Technology Building, intersection of Minzhi Avenue and Industrial West Road, Longhua New District, Shenzhen

telephone: 0755-21031946

<http://www.yuhong-co.com/>

# catalogue

一、 Prepare/revise the resume

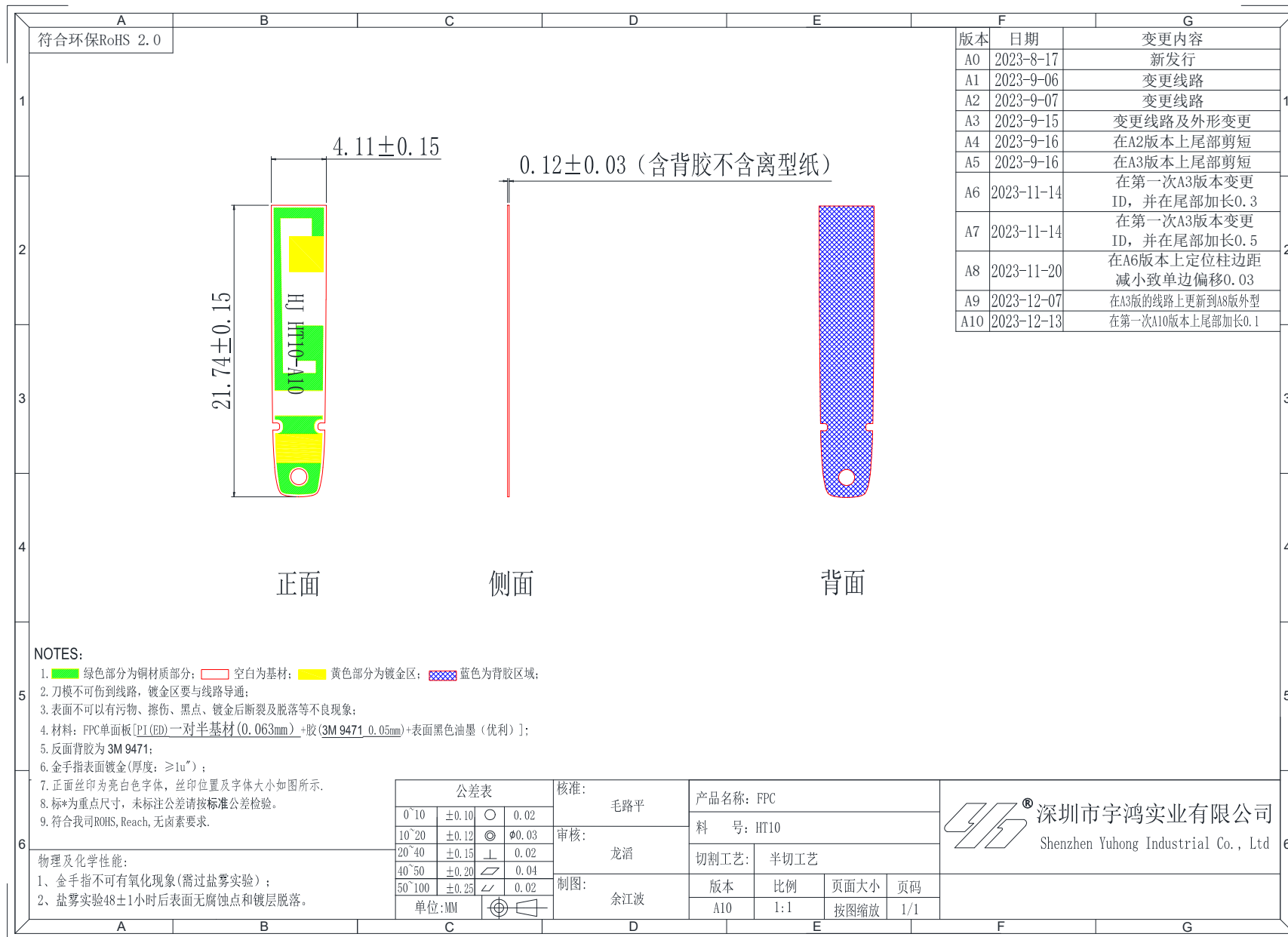
二、 Product drawing

三、 Electrical and mechanical properties

## 一、 Prepare/revise the resume

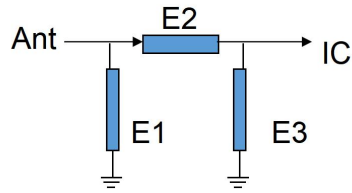
edition	Revision page	Change time	Alteration party	Reason and content of change	remark
A0	—	2023/12/6	Cindy	First version of the antenna form	
A1	4 - 4	2023/12/13	Cindy	Adjust the FPC circuit to optimize performance	
A2					
A3					
A4					
A5					
A6					
A7					
A8					
A9					

## 二、Product drawing



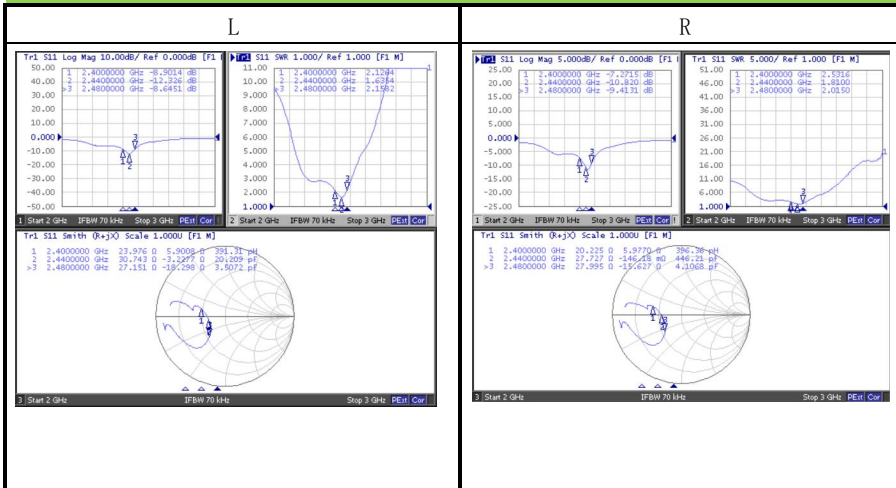
### 三、Electrical and mechanical properties

#### 1、Match the circuit diagram



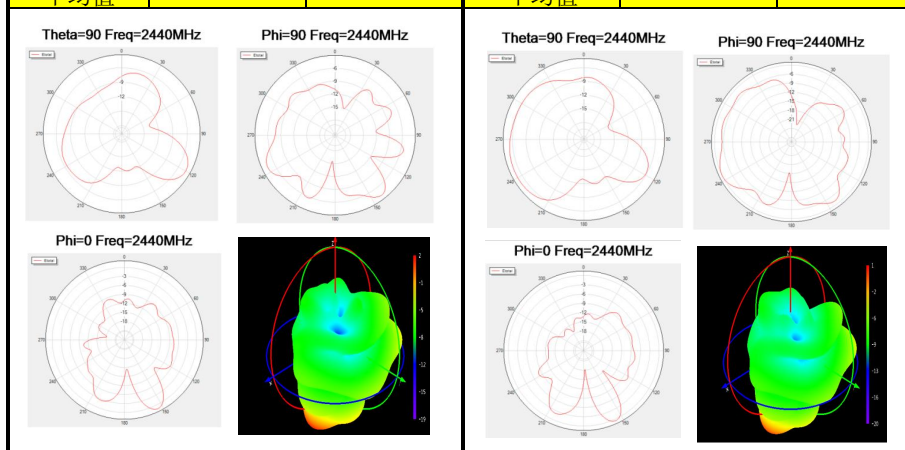
L/R	
Element	Value
E1	N/C
E2	0Ω
E3	2.7PF

#### 2、S11 Parameters



### 3、Passive efficiency

L			R		
MHz	Gain (dBi) Freedom	Efficiency (%) Freedom	MHz	Gain (dBi) Freedom	Efficiency (%) Freedom
2400	-1.32	23.96	2400	-1.44	24.04
2410	-1.47	24.52	2410	-1.27	25.19
2420	-1.24	25.11	2420	-1.06	25.55
2430	-1.16	26.38	2430	-1.08	26.74
2440	-1.13	25.07	2440	-1.16	26.34
2450	-1.3	25.07	2450	-1.2	25.04
2460	-1.23	24.15	2460	-1.25	24.18
2470	-0.91	24.88	2470	-1.27	24.7
2480	-0.88	24.16	2480	-1.28	23.69
2490	-1.1	24.78	2490	-1.3	22.47
2500	-1.24	23.25	2500	-1.25	22.05
平均值	-1.18	24.67	平均值	-1.23	24.54



### 4、Active OTA data

L	channel	TRP (dbm)	TRP (dBm)
Free space	0	1.23	-86.15
	39	1.57	-86.27
	78	1.89	-86.34
L	channel	TRP (dbm)	TIS (dbm)
Second generation head die	0	-3.54	-80.57
	39	-2.75	-80.24
	78	-2.89	-81.33
R	channel	TRP (dbm)	TRP (dBm)
Free space	0	1.16	-86.12
	39	1.35	-86.47
	78	1.96	-86.8
R	channel	TRP (dbm)	TIS (dbm)
Second generation head die	0	-3.12	-80.34
	39	-3.06	-81.41
	78	-2.57	-80.89