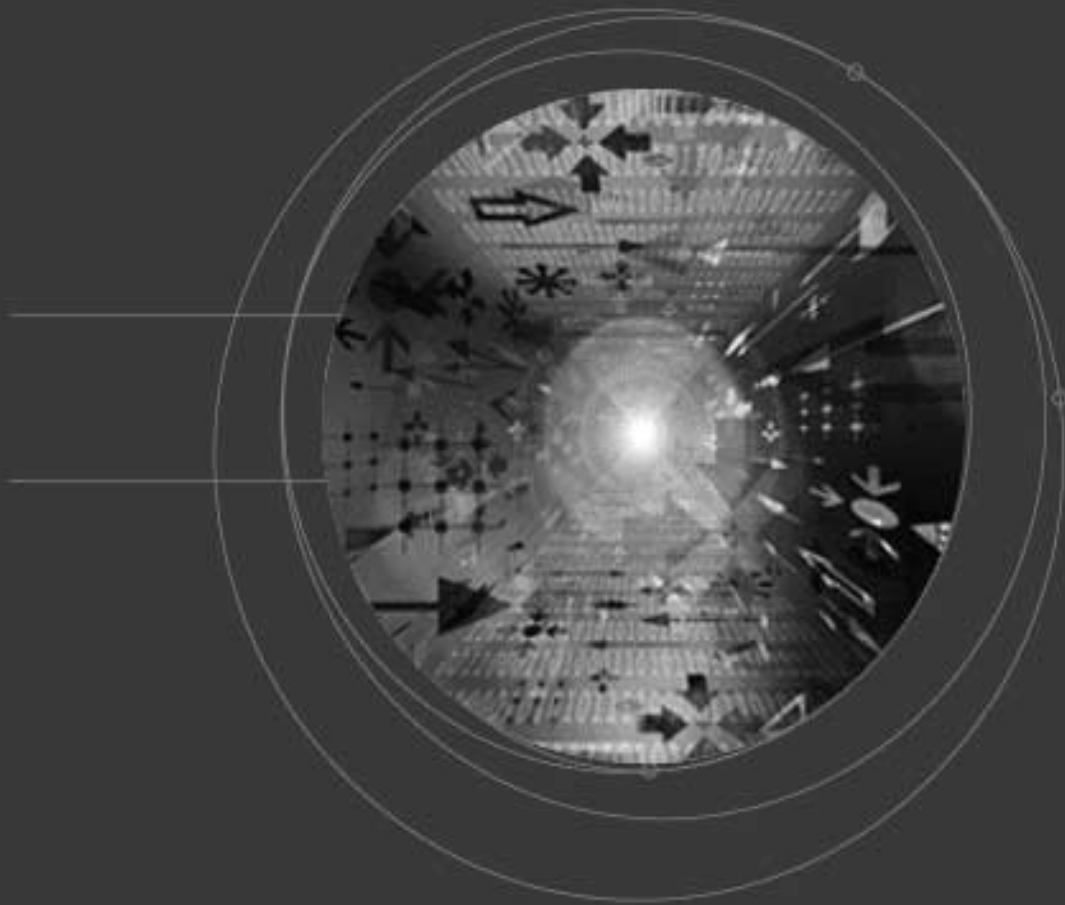

CDMA iCell Base Station Subsystem Hardware Overview



Revision 1.3
TC-HO-0558
March 2003

TELOS

Copyright © 2003 TELOS Technology
Printed in Canada.

The information presented in this document is the confidential property of TELOS Technology and cannot be copied or disclosed without prior written authorization from TELOS Technology. TELOS Technology reserves the right to change specifications without notice. TELOS Technology is not liable for any technical or editorial errors or omissions contained herein or for incidental or consequential damages resulting from the performance, furnishing, or use of this material.

Important Notice

Due to the nature of wireless communications, transmission and reception of voice and data can never be fully guaranteed. Data may be delayed, corrupted (i.e. have errors) or be totally lost. Although significant delays or losses of data are rare in TELOS Technology, Inc. networks, these networks should not be relied upon in situations where failure to transmit or receive voice and data could result in damage of any kind to the user or any other party, including but not limited to personal injury, death, or loss of property. TELOS Technology, Inc. accepts no responsibility for damages of any kind resulting from delays or errors in transmission or reception of voice or data.

Safety and Hazards

Do not operate these network products when blasting is scheduled for any areas under network coverage or while blasting equipment, devices, or material transits through any areas under network coverage. Do not operate medical equipment, life support equipment, or any equipment which may be susceptible to any form of radio interference. TELOS Technology, Inc. radio transmission networks could interfere with this equipment.

Regulatory

This device complies with Part 15 of the FCC Rules. Operation of this device is subject to the following two conditions: (1) this device may not cause harmful interference, and (2) this device must accept any interference received including interference that may cause undesired operation.

FCC ID: RCEiCell800-1

Where appropriate, the use of the equipment is subject to the following conditions:

CAUTION! Unauthorized modifications or changes not expressly approved by TELOS Technology, Inc. could void compliance with regulatory rules, and thereby your authority to use this equipment.

WARNING (EMI) - United States FCC Information - This equipment has been tested and found to comply with the limits pursuant to Part 15 of the FCC Rules. These limits are designed to provide reasonable protection against harmful interference in an appropriate installation. This equipment generates, uses, and can radiate radio frequency energy and, if not installed and used in accordance with the instructions, may cause harmful interference to radio communication. However, there is no guarantee that interference will not occur in a particular installation.

If this equipment does cause harmful interference to radio or television reception, which can be determined by turning the equipment off and on, the user is encouraged to try to correct the interference by one of the following measures:

- Reorient or relocate the receiving antenna
- Increase the separation between the equipment and receiver
- Connect the equipment into an outlet on a circuit different from that to which the receiver is connected
- Consult a dealer or an experienced radio/TV technician for help

Product names mentioned in this document are trademarks or registered trademarks of their respective companies and are hereby acknowledged.

Please report any errors or omissions in this document to:

TELOS Technology, Inc.
Technical Communications Group
4600 Jacombs Road
Richmond, B.C. V6V 3B1
Canada

E-mail: docs@telostech.com
Telephone: 604.276.0055
Facsimile: 604.276.0501

Web site: www.telotechnology.com