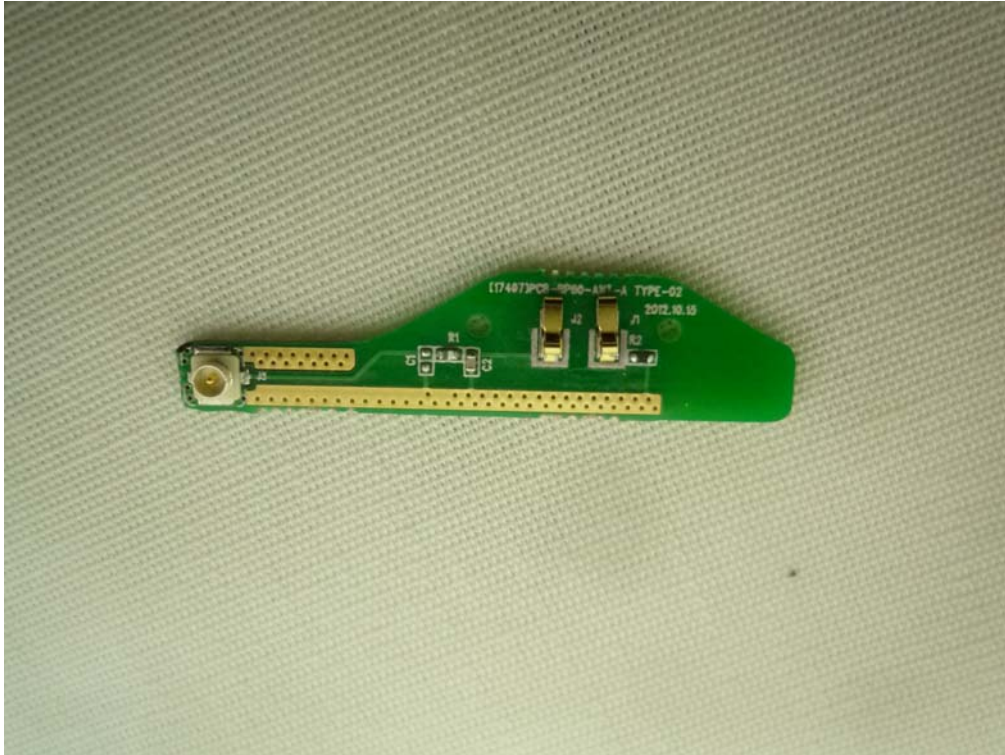
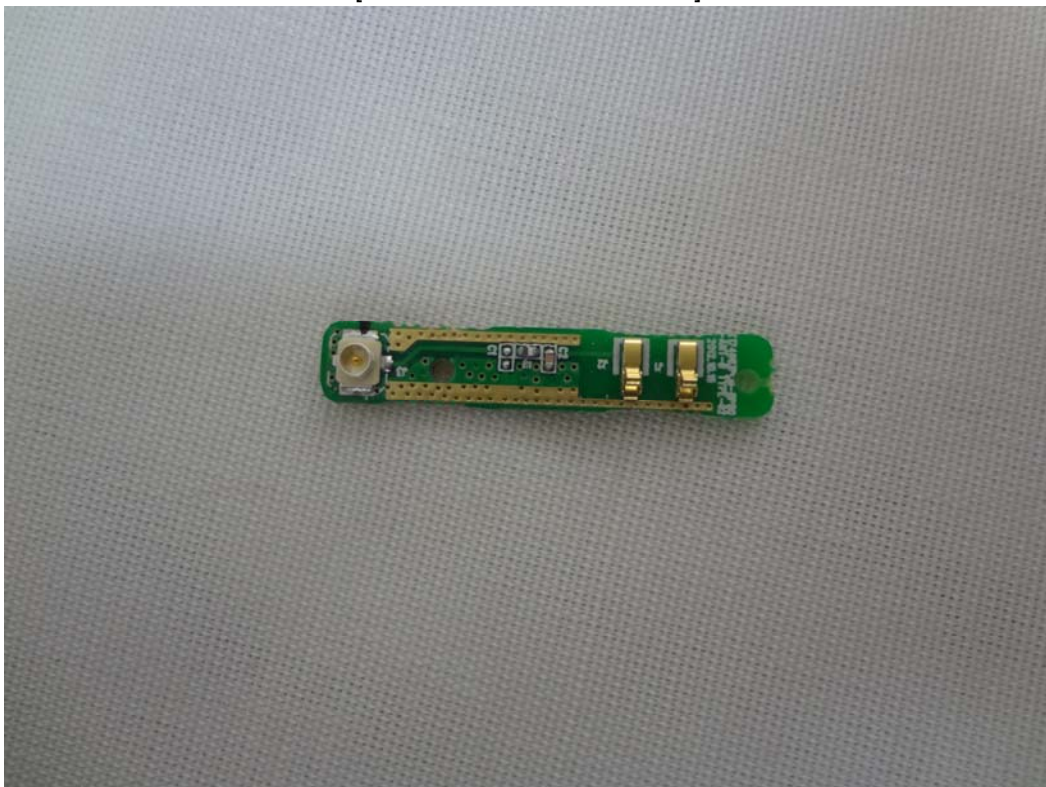


Appendix 3. Photographs of EUT [Internal View]

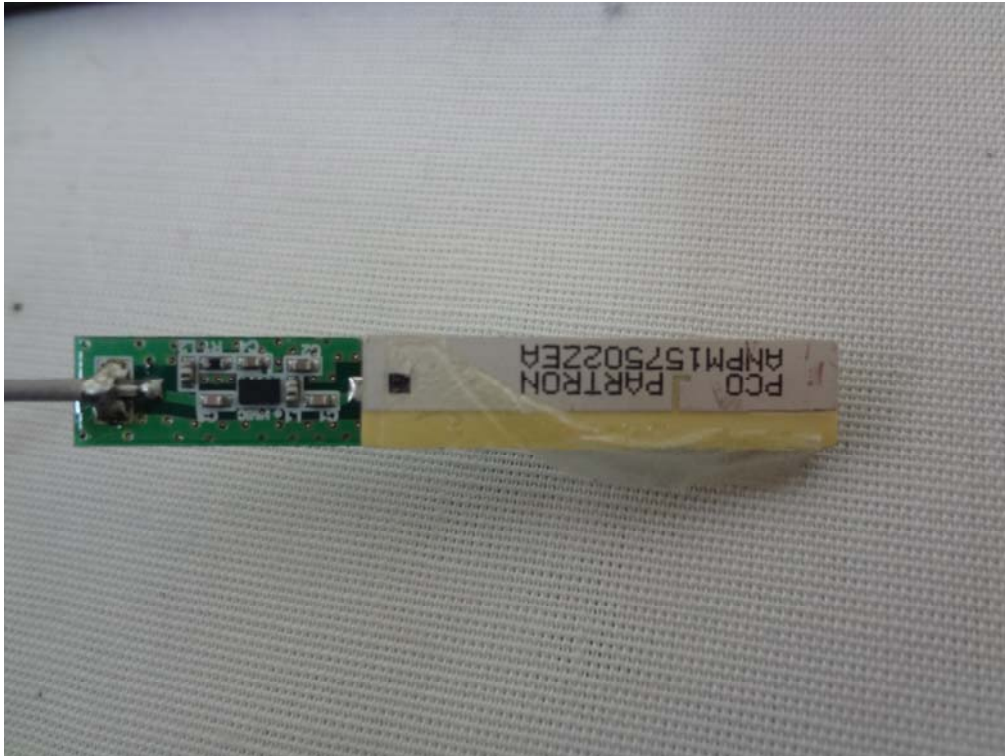
[GSM module antenna]



[WLAN/BT module antenna]



[GPS antenna]



[RFID antenna]



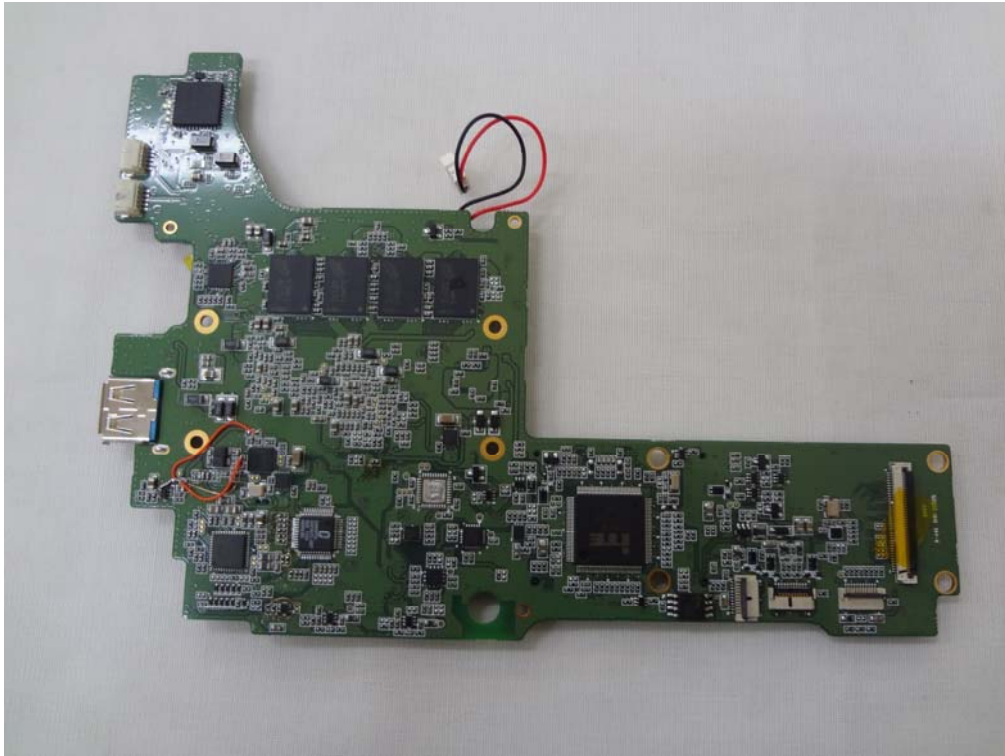
[Inside View]



[Main board Front]



[Main board Rear]



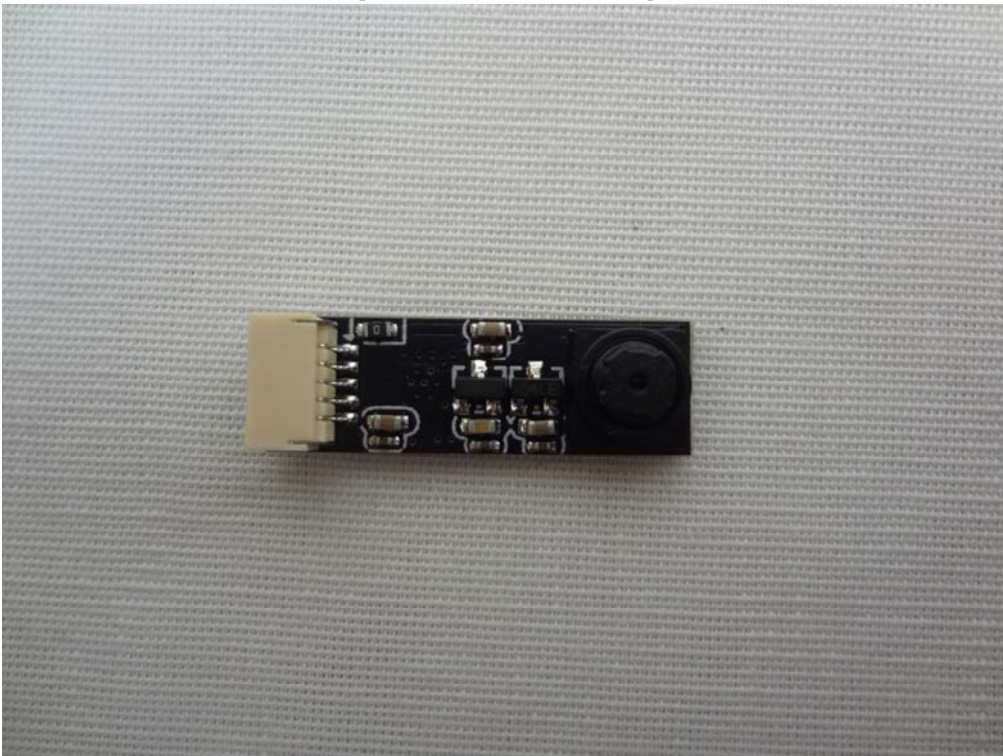
[Camera module 1 Front]



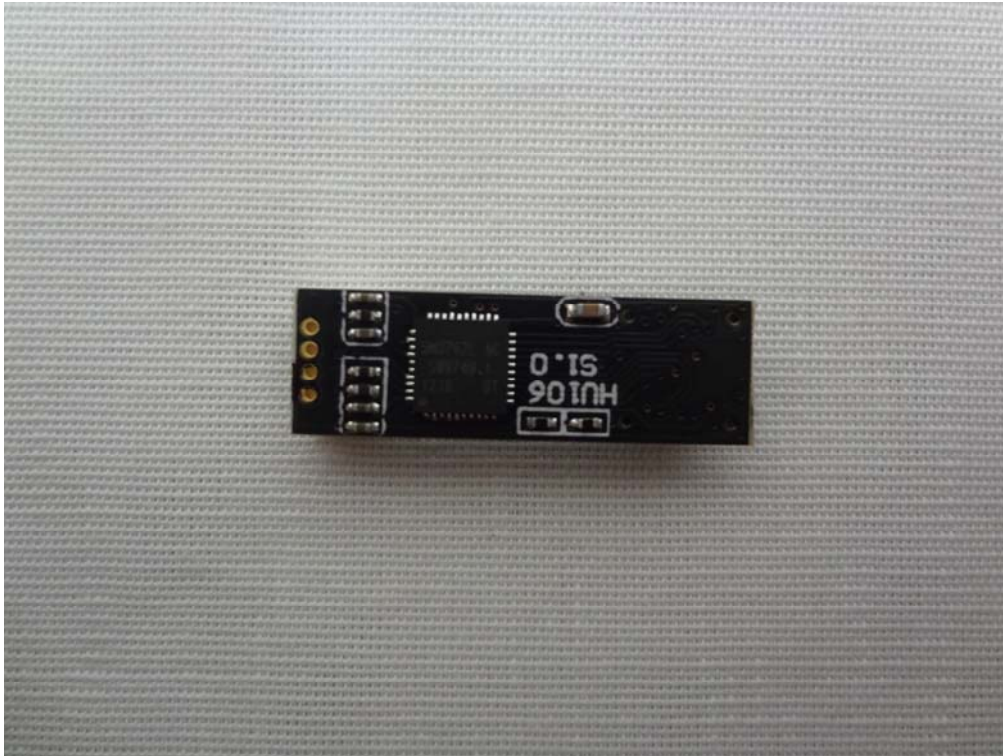
[Camera module 1 Rear]



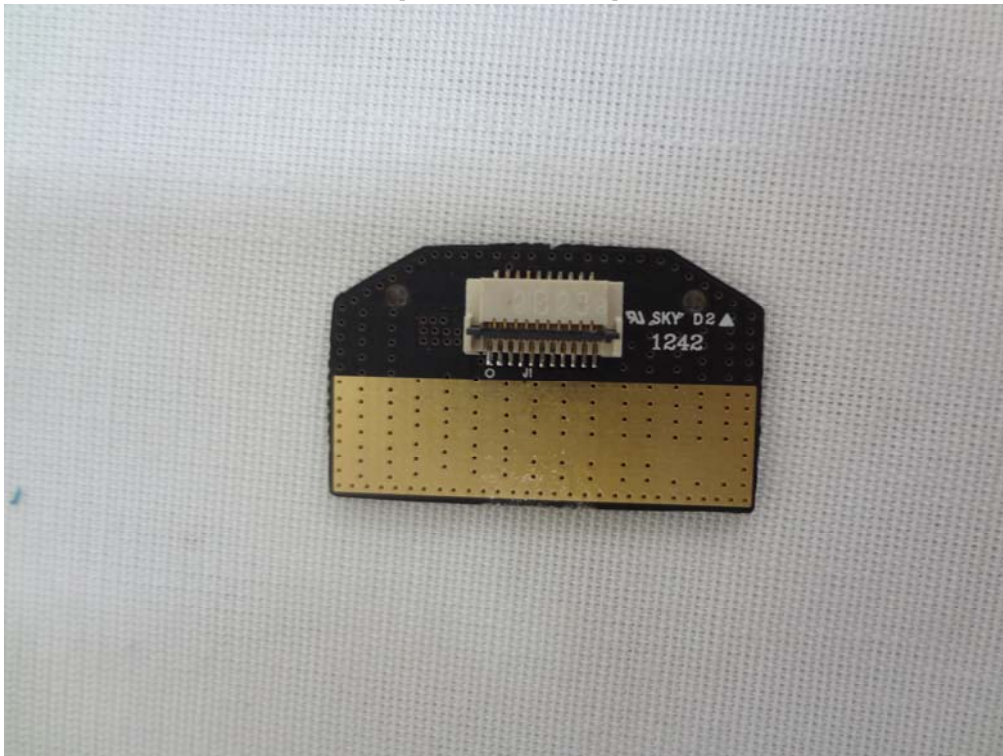
[Camera module 2 Front]



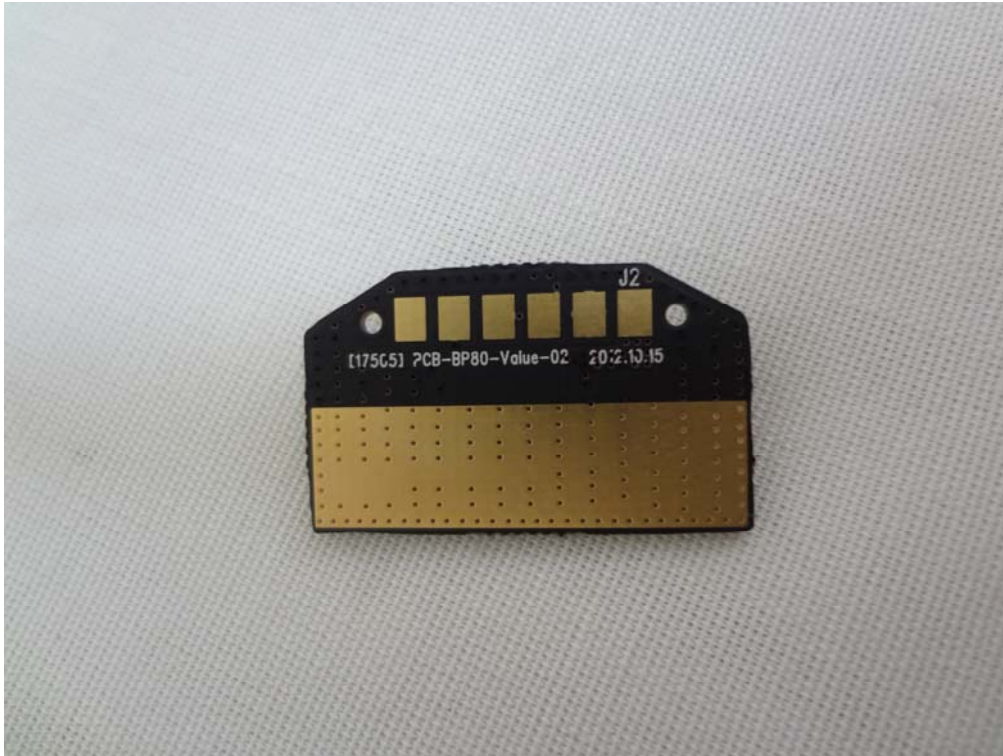
[Camera module 2 Rear]



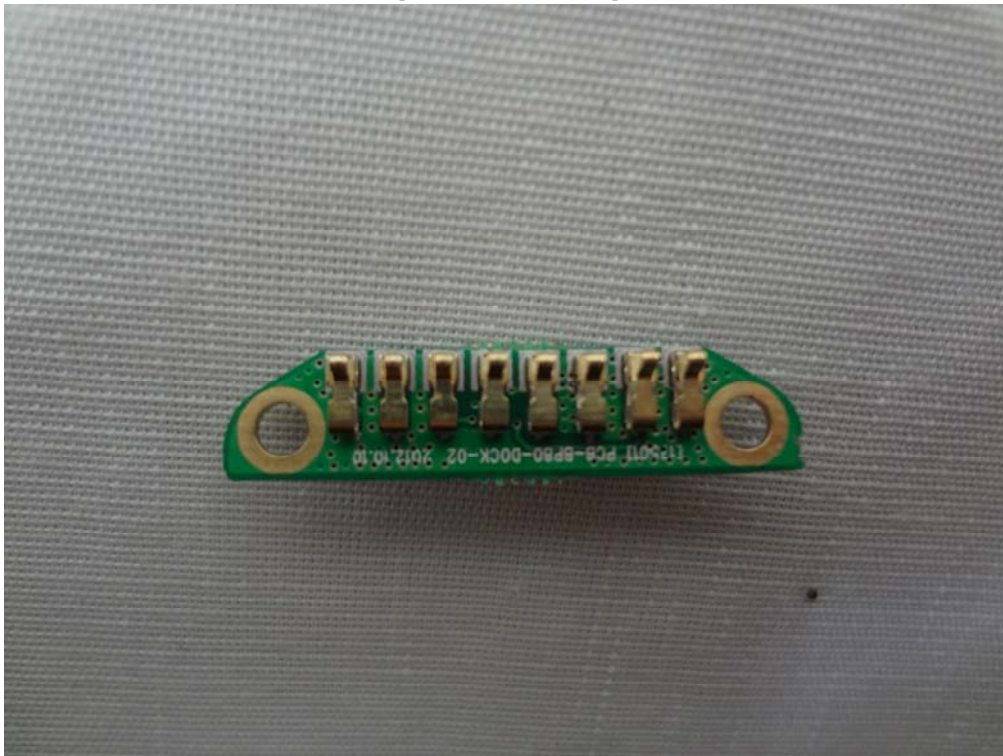
[Dock board Front]



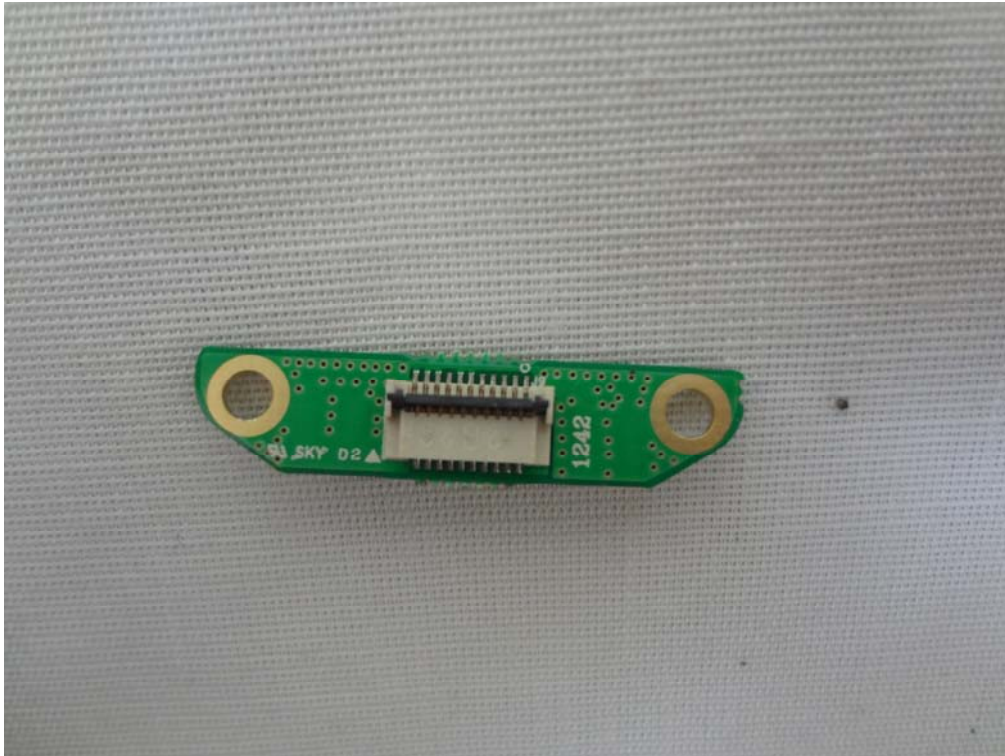
[Dock board Rear]



[Dock board Front]



[Dock board Rear]



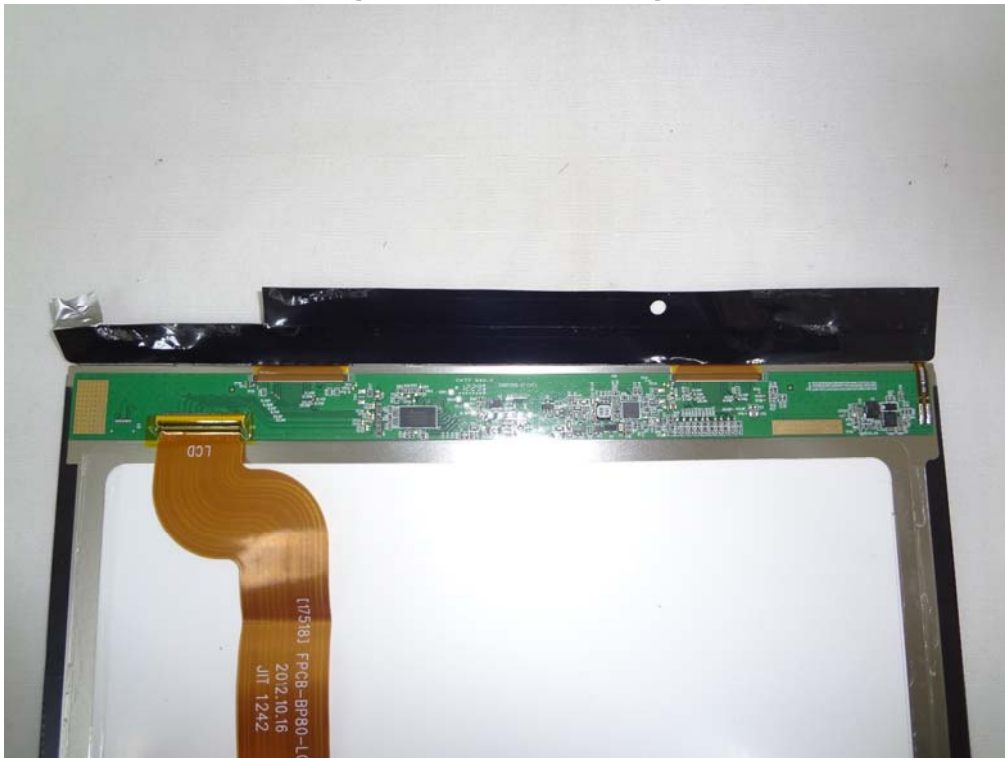
[GSM Module]



[WALN/BT module]



[LCD Control board Front]



[LCD Control board Rear]



[LCD Panel]



[MicroSD slot Front]



[MicroSD slot Rear]



[SSD Front]



[SSD Rear]



[Touch screen control board Front]



[Touch screen control board Rear]

