

packard bell



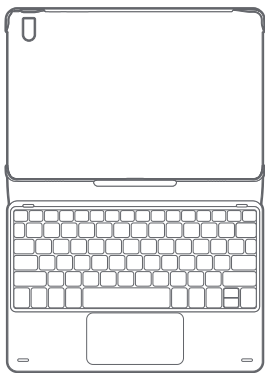
2-IN-1 10.1"
TABLET/LAPTOP
USER GUIDE
M10905-32



In the box



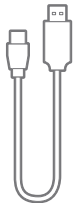
10.1" tablet



Smart keyboard



User guide



USB Type-C charging cable



Adapter

Care & safety precautions

- During charging, keep your device and adapter near room temperature for efficient battery charging.
- New batteries are not fully charged.
- New batteries or batteries stored for a long time may take more time to charge.
- The included adapter is intended for indoor use only.
- Service should only be provided by an authorized service provider.
- Never attempt to disassemble, repair or modify the tablet yourself.
- Do not use the tablet in rain or other wet locations.
- Avoid spilling any liquid on the tablet.
- In case the tablet gets wet, unplug all cables and turn off the tablet.
- Do not attempt to dry the tablet with an external heat source.
- Unplug all cables and turn off the tablet before cleaning.
- Use a soft, lint-free cloth to clean the tablet and display.
- Avoid getting moisture in open ports.
- Do not use household cleaners, solvents, alcohol, or abrasives to clean the tablet.
- Routinely check the tablet for proper and safe conditions. If there is any damage, or broken parts, remove the tablet from use.
- If for any reason the screen (display) is fractured or cracked, immediately remove this product from use and contact Customer Support.
- It is rare but possible for seizures to be triggered by light flashes or patterns such as those on computer or TV screens. To reduce exposure to this potential hazard, play/watch in a well-lit room, sit an appropriate distance from the screen and take 10- to 15-minute breaks every hour.
- Cords could be a strangulation hazard.
- Keep out of reach of children under 3 years of age.
- Children pulling on the cord could cause the computer monitor or other equipment to which the device is connected to fall with possibility of property damage, serious injury, or death. Adult supervision required during use.
- Long-term exposure to loud sounds, at high volume, may result in permanent hearing loss.
- When using headphones or earbuds, it is recommended that the product is listened to at lower volumes for shorter periods of time. Set the volume while in a quiet environment; turn the volume down if you cannot hear the people speaking near you.
- Limit the listening time to 90 minutes, followed by a quiet period. The louder the volume, the less time required before your hearing may be affected.
- If you experience ringing in your ears or hear muffled speech, stop listening and have your hearing checked.

WARNING: TO REDUCE THE RISK OF FIRE OR ELECTRICAL SHOCK, DO NOT EXPOSE THIS PRODUCT TO RAIN OR MOISTURE.



THE LIGHTNING FLASH WITH ARROWHEAD SYMBOL, WITHIN AN EQUILATERAL TRIANGLE, IS INTENDED TO ALERT THE USER TO THE PRESENCE OF UNINSULATED "DANGEROUS VOLTAGE" WITHIN THE PRODUCT'S ENCLOSURE THAT MAY BE OF SUFFICIENT MAGNITUDE TO CONSTITUTE A RISK OF ELECTRICAL SHOCK TO PERSONS.

WARNING

**RISK OF ELECTRIC SHOCK
DO NOT OPEN**

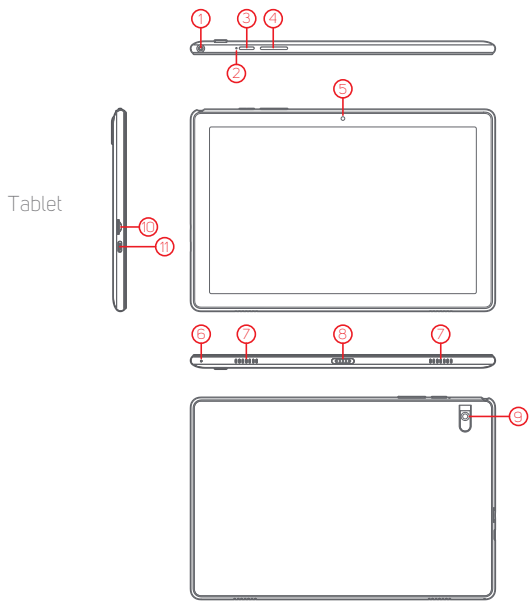
WARNING: TO REDUCE THE RISK OF ELECTRICAL SHOCK, DO NOT REMOVE COVER (OR BACK).

NO USER SERVICEABLE PARTS INSIDE.
REFER SERVICING TO QUALIFIED SERVICE PERSONNEL.



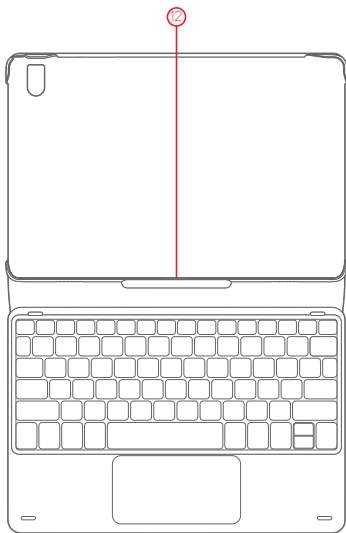
THE EXCLAMATION POINT WITHIN THE EQUILATERAL TRIANGLE IS INTENDED TO ALERT THE USER TO THE PRESENCE OF IMPORTANT OPERATING AND MAINTENANCE (SERVICING) INSTRUCTIONS IN THE LITERATURE ACCOMPANYING THE PRODUCT.

Buttons, ports & hardware



- | | | |
|------------------|-------------------|----------------------------|
| ① Headphone jack | ⑤ Front camera | ⑨ Rear camera |
| ② Reset button | ⑥ Microphone | ⑩ Micro SD card slot |
| ③ Power button | ⑦ Speakers | ⑪ USB Type-c charging port |
| ④ Volume button | ⑧ Quick connector | |

Smart keyboard



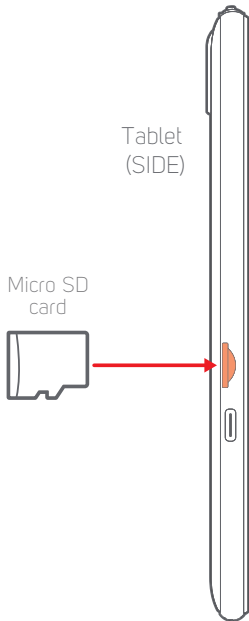
12 Quick connector pins

Expanding the storage

Inserting a Micro SD card

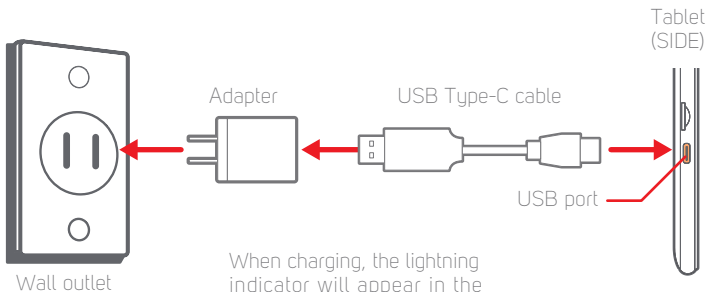
To install a Micro SD card into the tablet, carefully insert the card as shown below into the card slot until it clicks and locks into place.

To remove the Micro SD card, gently press it inward to eject.



Charging

Connect the tablet to a wall outlet using the included adapter as shown below.



When charging, the lightning indicator will appear in the battery icon.



Battery Tips:

- Turn off Wi-Fi when it's not in use.
- Lock the tablet (turning the display off) to shorten charging time.
- To optimize battery time and performance, adjust the "Brightness" and "Screen timeout" options in the Settings panel.
- It is recommended to keep the brightness level at 50% or under if the tablet is in use while charging.


Power ON / OFF & Reset

Turning on the tablet

Press & hold the  power button until the startup screen appears.

Power off the tablet

Press & hold the  power button until the "Power off" option appears.

Briefly press the  power button. (Lock the tablet to conserve the battery).

Unlock the tablet

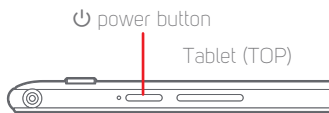
Briefly press the  power button, and slide the "Lock icon" up.

If the tablet malfunctions or freezes, you can use the reset button.

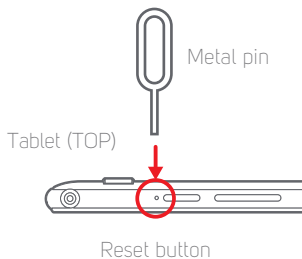
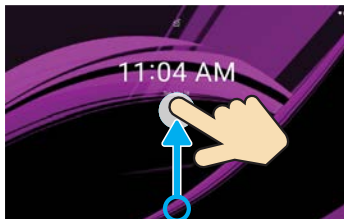
To reset the tablet, take a metal pin (such as the end of a paper clip) and gently push the recessed reset button on the side of the tablet as shown below.


The tablet will restart.

Press the  power button to start the tablet.



Lock screen

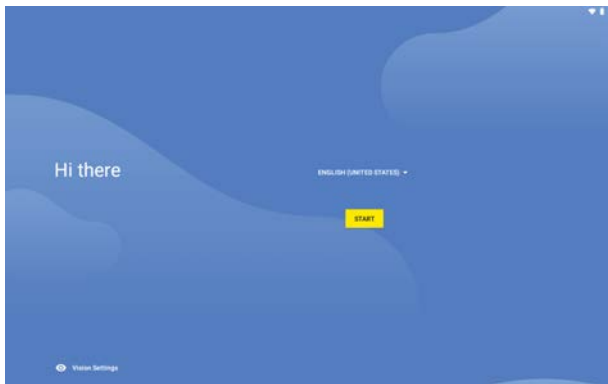


- 1 Press and hold the  Power button to get started.



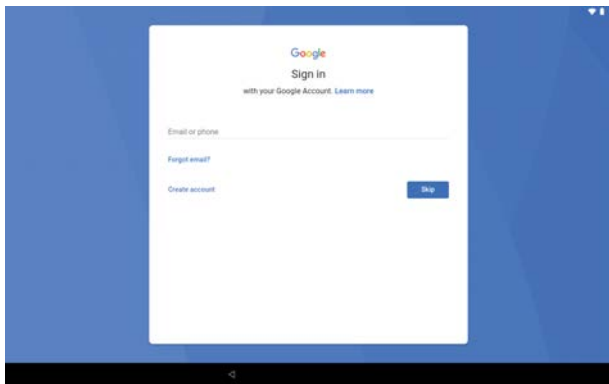
Startup screen

- 2 Follow the initial setup wizard prompts.



Setup wizard

- 3 To use the Google Play, sign into or create a Google Account.



Google Account



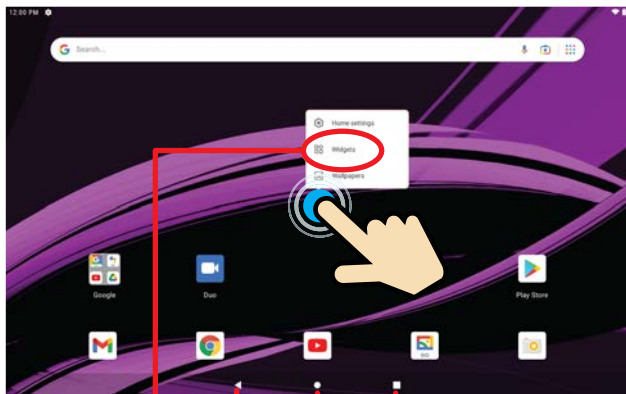
If you use Gmail, you already have a Google Account — if not, you can create an account now.



Google Play is your entertainment unbound. It brings together all of the entertainment you love and helps you explore it in new ways, anytime, anywhere. We've brought the magic of Google to movies, TV, books, apps and games, so you get more from your content every day.

Home Screen

Home Screen

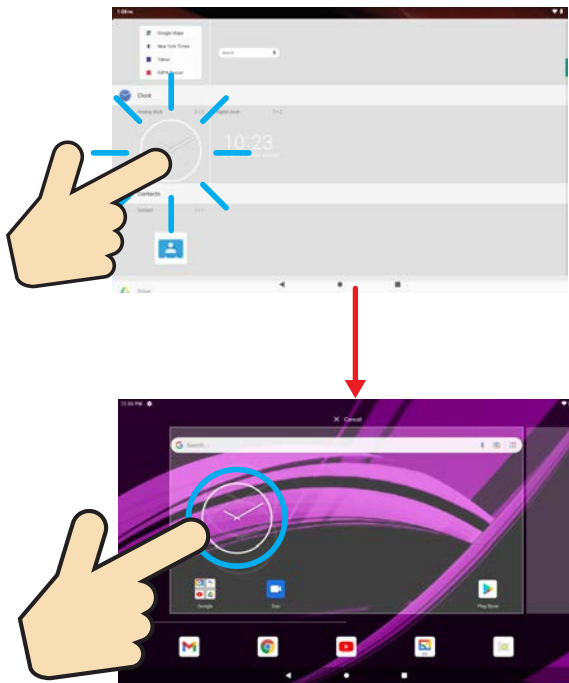


Previous Home Multitasking

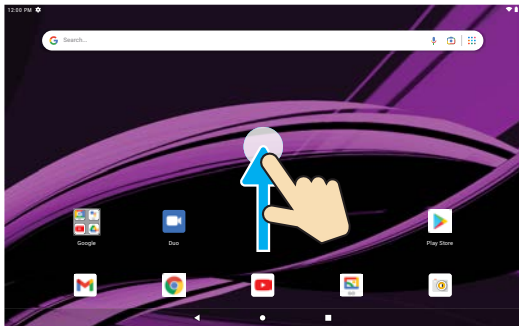
Widgets

To add a widget, press and hold anywhere on the home screen, and select the "Widgets" option.

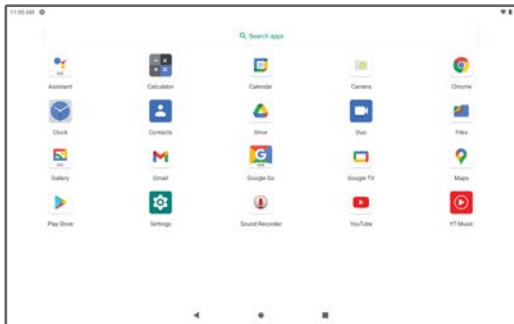
Press and hold a widget and place it on the home screen as shown below.



Swipe up the home screen to access the Apps Screen.



Home Screen



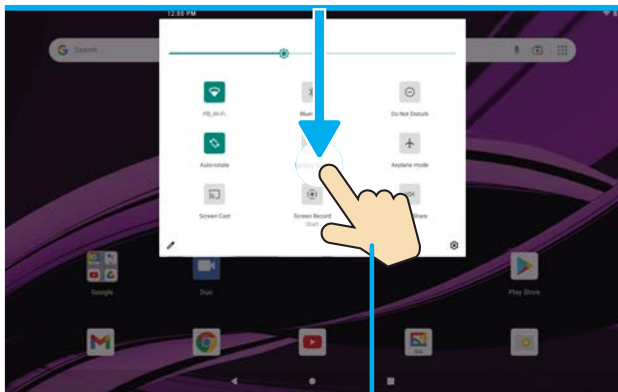
Apps Screen

Notifications and Quick Settings

Notifications panel

Swipe down from the top edge of the screen to display the Notifications panel where you can browse and reply to your emails, check software updates, reminders and more.

Home screen



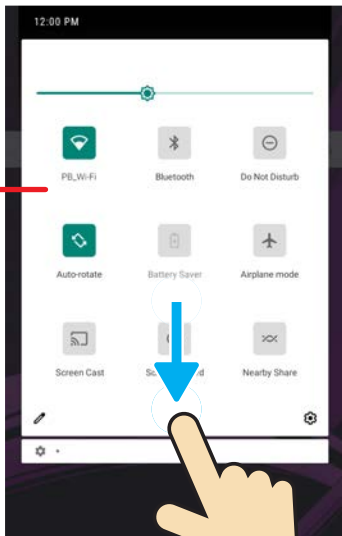
Swipe down once

Quick Settings panel

Swipe down twice from the top edge of the screen to expand and access the Quick Settings panel, where you can easily enable/disable Wi-Fi, Bluetooth, Airplane mode and other settings.

Quick Settings panel

Quick Settings panel



Swipe
down
twice

Connecting

Wi-Fi and Bluetooth®

To enable/disable Wi-Fi or Bluetooth®, simply tap the icons on the Quick Settings panel as shown below.

To access more settings options, select the  icon.

Quick Settings panel

