

Inside view



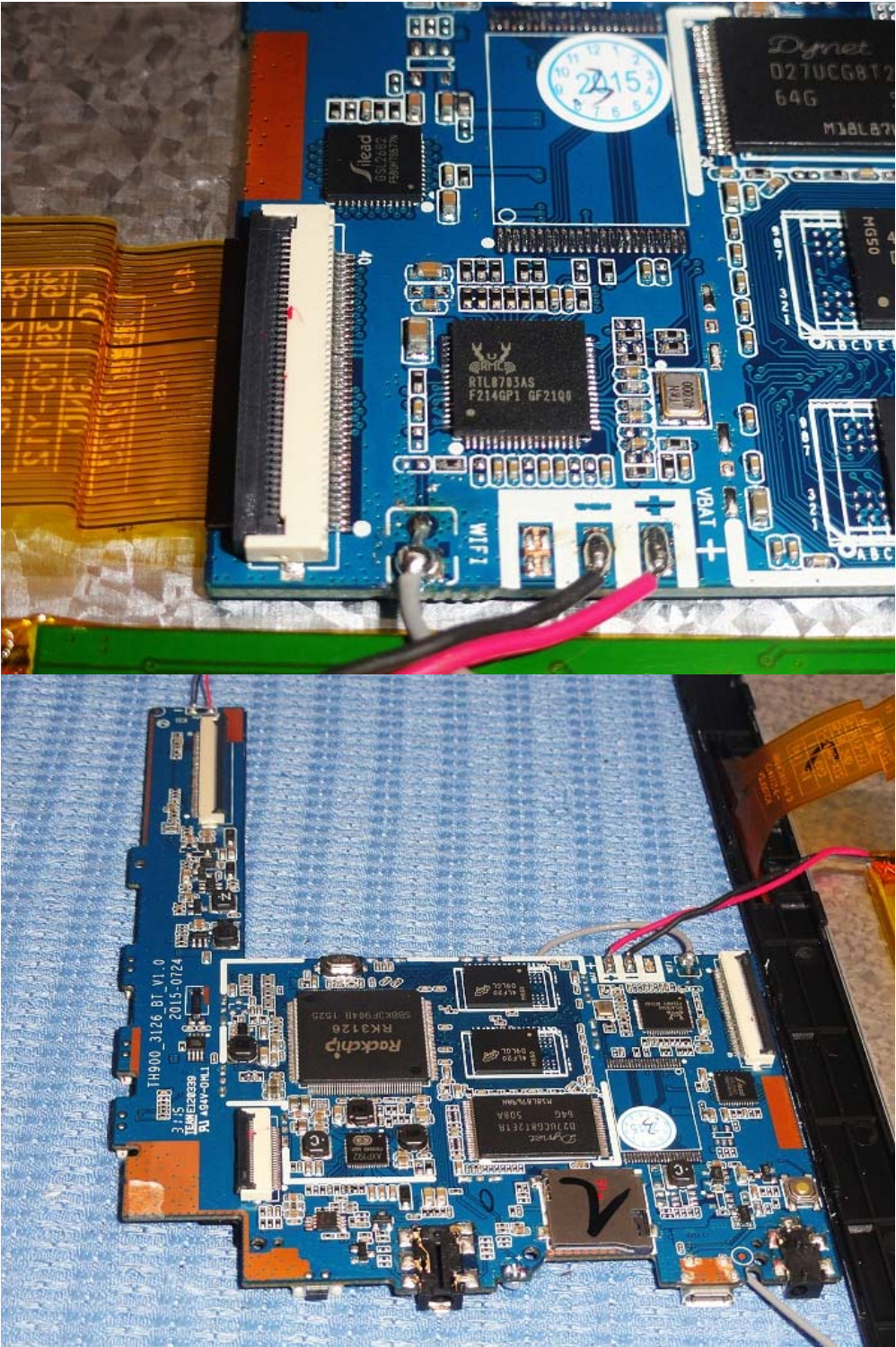
Inside view





The top photograph provides a detailed view of a custom blue PCB. Key components visible include a black integrated circuit labeled 'RTL8783AS F214GP1 6F21Q0' with a small '2015' clock sticker above it. To the right, a 'Dynnet D27UCG8T2 64G' memory module is mounted. A white ribbon cable is connected to a multi-pin header on the left. A pink wire is plugged into a 'VBA1+' port, and a grey wire is connected to a 'WIFI' port. Other components include a 'head' chip, a '10K 4000' resistor, and various surface-mount components.

The bottom photograph shows the entire custom PCB layout. The board features a 'Rockchip RK3126' processor, a 'Dynnet D27UCG8T2 64G' memory module, and a '3.3V' regulator. A white ribbon cable is connected to a header on the left. A pink wire is connected to a 'VBA1+' port, and a grey wire is connected to a 'WIFI' port. The board is populated with numerous other components, including capacitors, resistors, and smaller integrated circuits. A '2015' clock sticker is also present.





Inside view

