



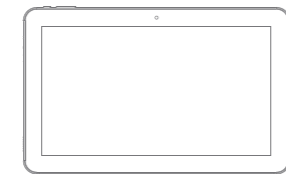
airBook™ 11.6"

TABLET/LAPTOP

USER GUIDE
M11550



In the box



11.6" tablet



Keyboard folio



User guide



Micro USB cable



Charger

Care & safety precautions

- During charging, keep your device and charger near room temperature for efficient battery charging.
- New batteries are not fully charged.
- New batteries or batteries stored for a long time may take more time to charge.
- The included charger is intended for indoor use only.
- Service should only be provided by an authorized service provider.
- Never attempt to disassemble, repair or modify the tablet yourself.
- Do not use the tablet in rain or other wet locations.
- Avoid spilling any liquid on the tablet.
- In case the tablet gets wet, unplug all cables and turn off the tablet.
- Do not attempt to dry the tablet with an external heat source.
- Unplug all cables and turn off the tablet before cleaning.
- Use a soft, lint-free cloth to clean the tablet and display.
- Avoid getting moisture in open ports.
- Do not use household cleaners, solvents, alcohol, or abrasives to clean the tablet.
- Routinely check the tablet for proper and safe conditions. If there is any damage, or broken parts, remove the tablet from use.
- If for any reason the screen (display) is fractured or cracked, immediately remove this product from use and contact Customer Support.
- It is rare but possible for seizures to be triggered by light flashes or patterns such as those on computer or TV screens. To reduce exposure to this potential hazard, play/watch in a well-lit room, sit an appropriate distance from the screen and take 10- to 15-minute breaks every hour.
- Cords could be a strangulation hazard.
- Keep out of reach of children under 3 years of age.
- Children pulling on the cord could cause the computer monitor or other equipment to which the device is connected to fall with possibility of property damage, serious injury, or death. Adult supervision required during use.
- Long-term exposure to loud sounds, at high volume, may result in permanent hearing loss.
- When using headphones or earbuds, it is recommended that the product is listened to at lower volumes for shorter periods of time. Set the volume while in a quiet environment; turn the volume down if you cannot hear the people speaking near you.
- Limit the listening time to 90 minutes, followed by a quiet period. The louder the volume, the less time required before your hearing may be affected.
- If you experience ringing in your ears or hear muffled speech, stop listening and have your hearing checked.

WARNING: TO REDUCE THE RISK OF FIRE OR ELECTRICAL SHOCK, DO NOT EXPOSE THIS PRODUCT TO RAIN OR MOISTURE.



THE LIGHTNING FLASH WITH ARROW-HEAD SYMBOL, WITHIN AN EQUILATERAL TRIANGLE, IS INTENDED TO ALERT THE USER TO THE PRESENCE OF UNINSULATED "DANGEROUS VOLTAGE" WITHIN THE PRODUCT'S ENCLOSURE THAT MAY BE OF SUFFICIENT MAGNITUDE TO CONSTITUTE A RISK OF ELECTRIC SHOCK TO PERSONS.

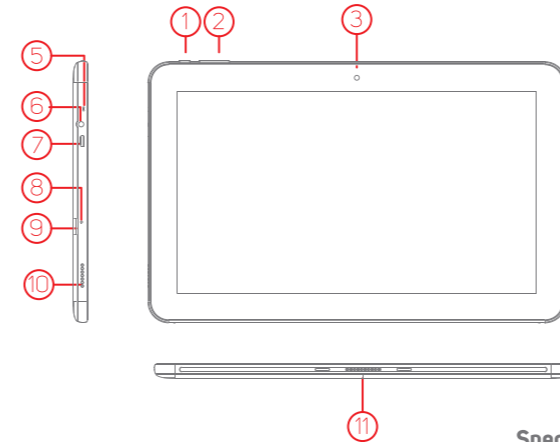
WARNING
RISK OF ELECTRIC SHOCK
DO NOT OPEN

NO USER SERVICEABLE PARTS INSIDE.
REFER SERVICING TO QUALIFIED SERVICE PERSONNEL.



THE EXCLAMATION POINT WITHIN THE EQUILATERAL TRIANGLE IS INTENDED TO ALERT THE USER TO THE PRESENCE OF IMPORTANT OPERATING AND MAINTENANCE (SERVICING) INSTRUCTIONS IN THE LITERATURE ACCOMPANYING THE PRODUCT.

Buttons, ports & hardware



- ① Power button
- ② Volume buttons
- ③ Front camera
- ④ Rear camera
- ⑤ Microphone
- ⑥ Headphone jack
- ⑦ Micro USB port
- ⑧ Reset button
- ⑨ Micro SD card slot
- ⑩ Speaker
- ⑪ Quick connector
- ⑫ Quick connector pins
- ⑬ Touchpad

Specifications:

- 11.6" IPS display (1920 x 1080)
- Android™ 8.1, Oreo™
- 64-bit, quad-core processor
- 2GB RAM
- 32GB internal storage* (expandable with optional Micro SD™ card)
- 6,300 mAh Li-ion battery
- Front + rear cameras
- Wi-Fi 802.11 ac/a/b/g/n
- Bluetooth 4.1

*Actual internal memory may vary depending on the operating system of the device and the preloaded apps.

Expanding the storage

Inserting a Micro SD card

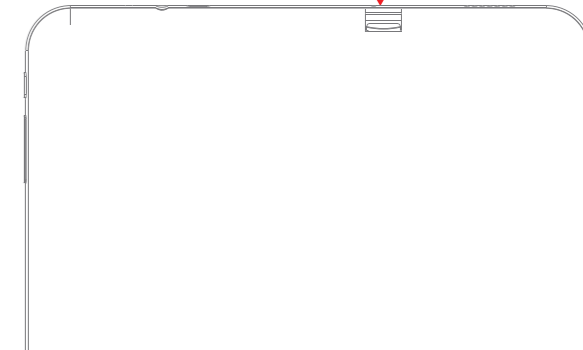
The tablet supports Micro SD cards up to 64GB (not included).

To install a Micro SD card into the tablet, carefully insert the card as shown below into the card slot until it clicks and locks into place.

To remove the Micro SD card, gently press it inward to eject.

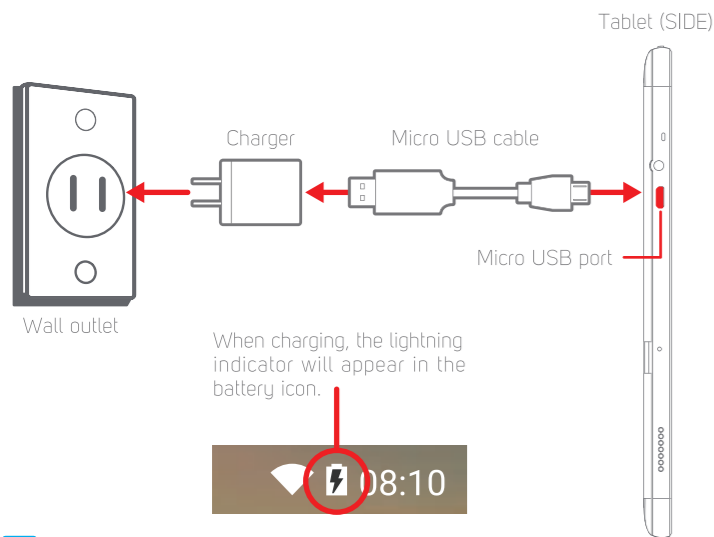


Micro SD card



Charging

Connect the tablet to a wall outlet using the included power adaptor as shown below.



When charging, the lightning indicator will appear in the battery icon.



Battery Tips:

- Turn off Wi-Fi when it's not in use.
- Lock the tablet (turning the display off) to shorten charging time.
- To optimize battery time and performance, adjust the "Brightness" and "Screen timeout" options in the Settings panel.
- It is recommended to keep the brightness level at 50% or under if the tablet is in use while charging.

Power ON / OFF & Reset

Turning on the tablet

Press & hold the  button until the startup screen appears.

Power off the tablet

Press & hold the  button until the "Power off" option appears.

Briefly press the  button. (Lock the tablet to conserve the battery).

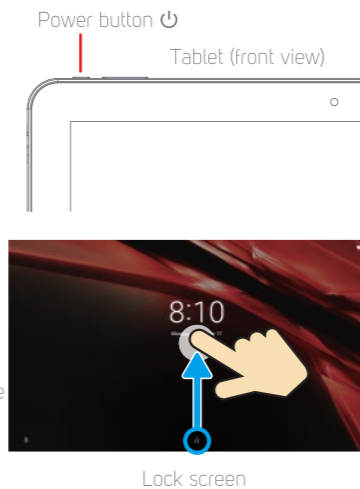
Unlock the tablet
Briefly press the  button, and slide the "Lock icon" up.

Resetting the tablet

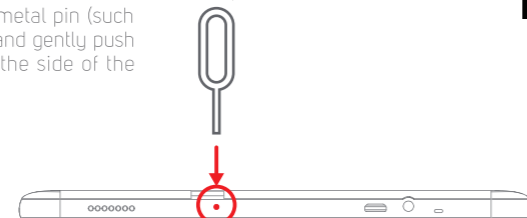
If the tablet malfunctions or freezes, you can use the reset button to restart it.

To reset the tablet, take a metal pin (such as the end of a paper clip) and gently push the recessed reset button on the side of the tablet as shown below.

The tablet will restart.



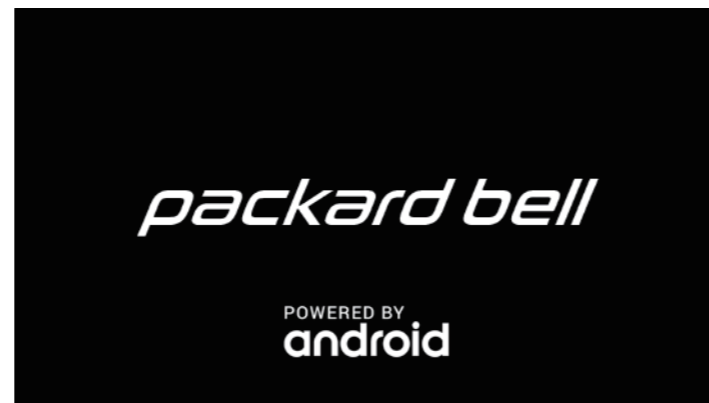
Metal pin



Reset button

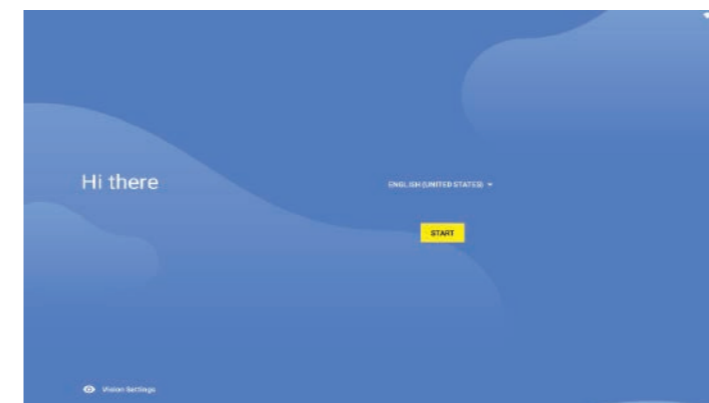
Turning on

- 1 Press and hold the  Power button to get started.



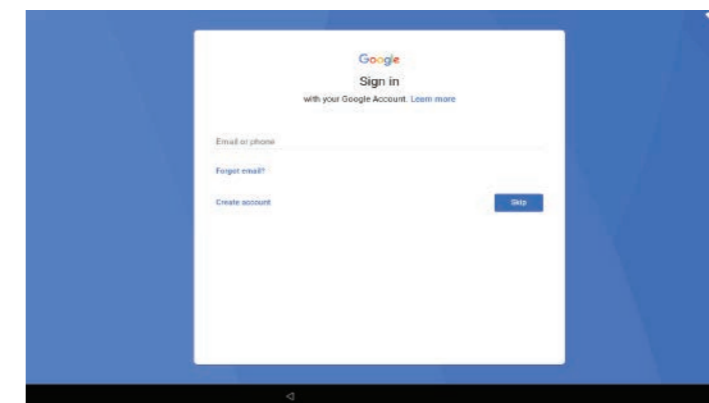
Startup screen

- 2 Follow the initial setup wizard prompts.



Setup wizard

- 3 To use the Google Play store, sign into or create a Google account.



Google account



If you use Gmail, you already have a Google account —if not, you can create an account now.

Google Play



Google Play

Google Play is a digital content experience from Google™ where you can find and enjoy your favorite music, movies, TV shows, books, and Android apps and games. It's your entertainment hub: you can access it from the web or from your Android device, and all your content is instantly available across your devices.

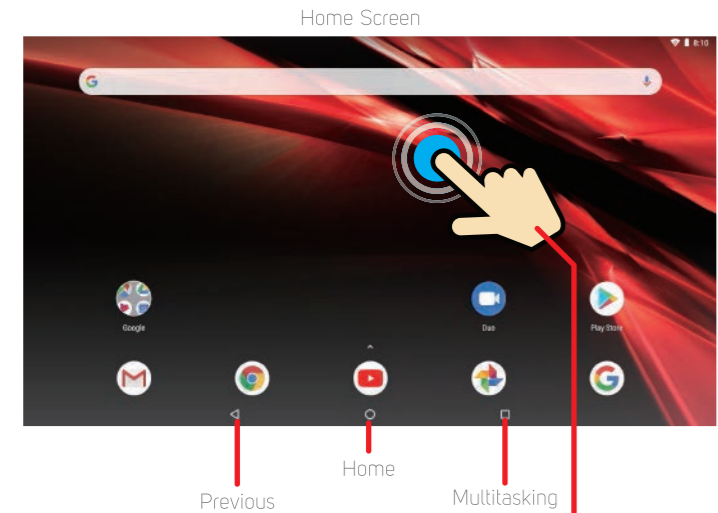


Play Movies & TV



Play Music

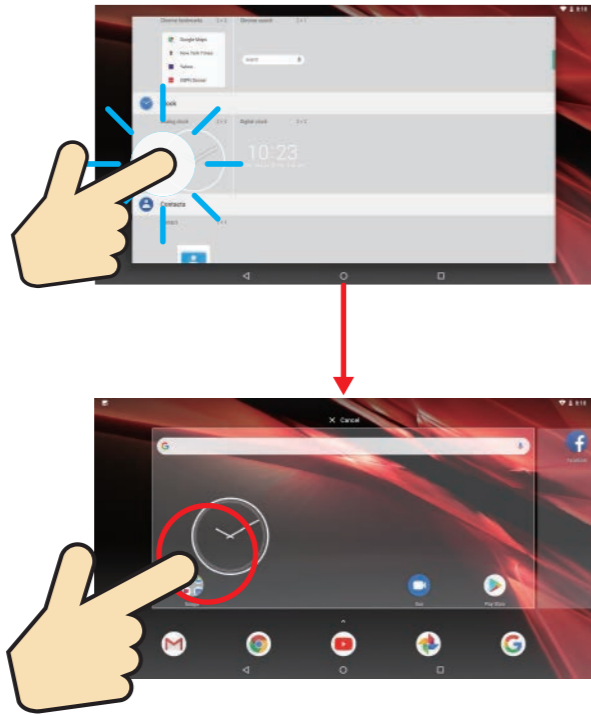
Le radio-appareil doit accepter toutes les interférences, y compris celles susceptibles de provoquer un fonctionnement indésirable.



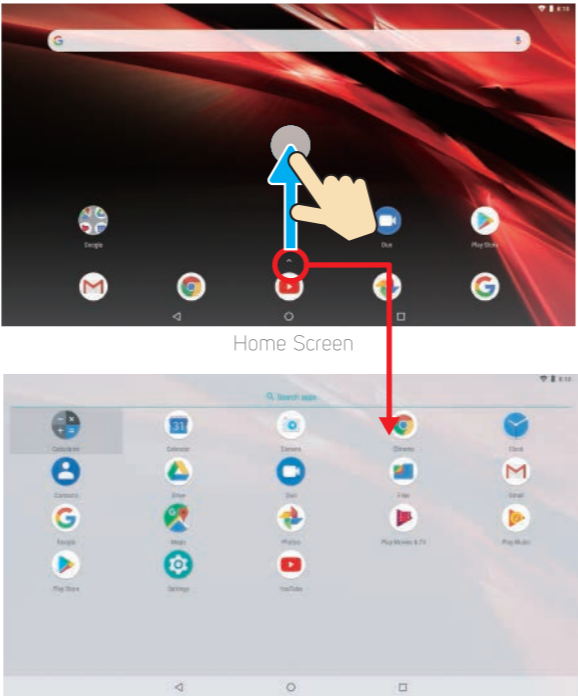
Widgets
To add a widget, press and hold anywhere on the home screen, and select the “Widgets” option.

Diagram showing the process to add a widget. A hand is shown pressing and holding on the home screen. A red circle highlights the 'WIDGETS' option in the bottom dock. Below the dock, a row of icons shows 'WALLPAPERS', 'WIDGETS' (highlighted with a red circle), and 'HOME SETTINGS'.

Press and hold widgets to place them on the home screen as shown below.

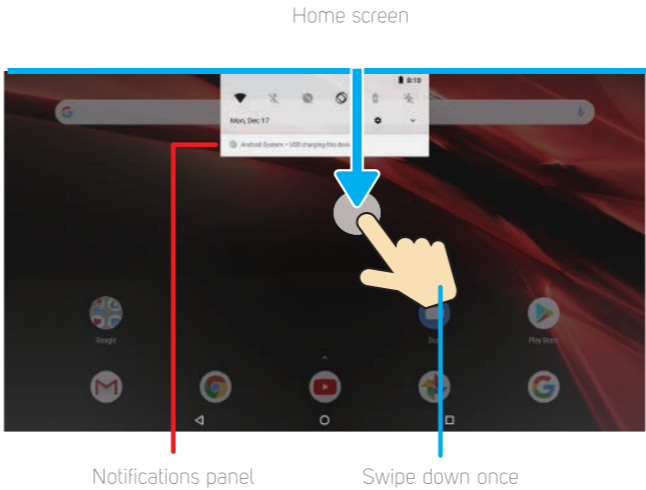


Swipe up ^ indicator on the home screen to access the Apps Screen.



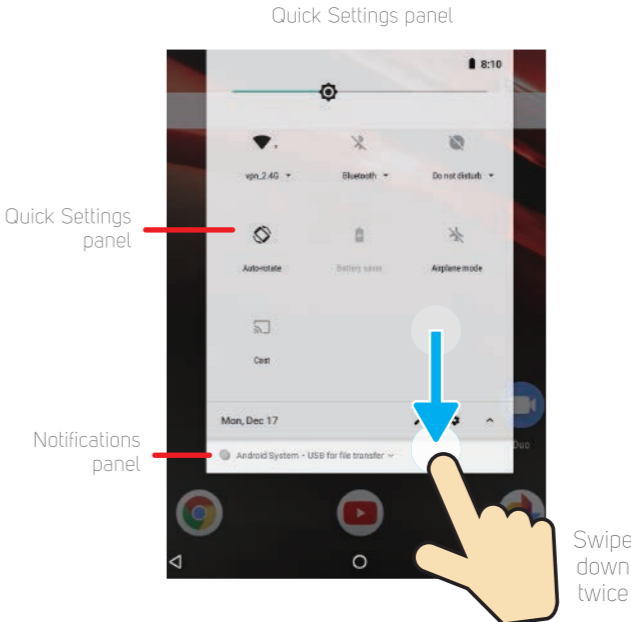
Notifications panel

Swipe down from the top edge of the screen to display the Notifications panel where you can browse and reply to your emails, check software updates, reminders and more.



Quick Settings panel

Swipe down twice from the top edge of the screen to expand and access the Quick Settings panel, where you can easily enable/disable Wi-Fi, Bluetooth, Airplane mode and other settings.

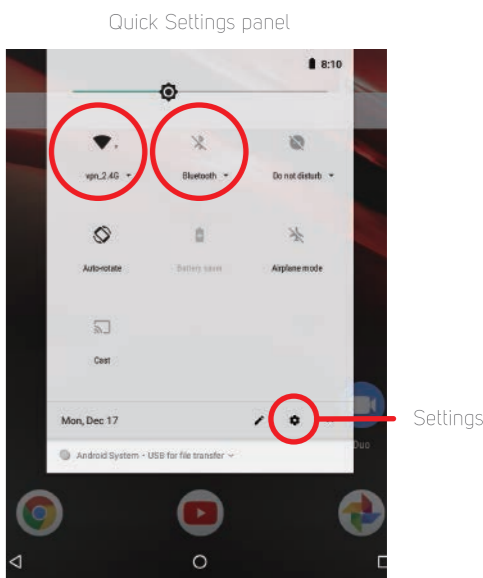


Connecting

Wi-Fi and Bluetooth®

To enable/disable Wi-Fi or Bluetooth®, simply tap the icons on the Quick Settings panel as shown below.

To access more settings options, select the icon.



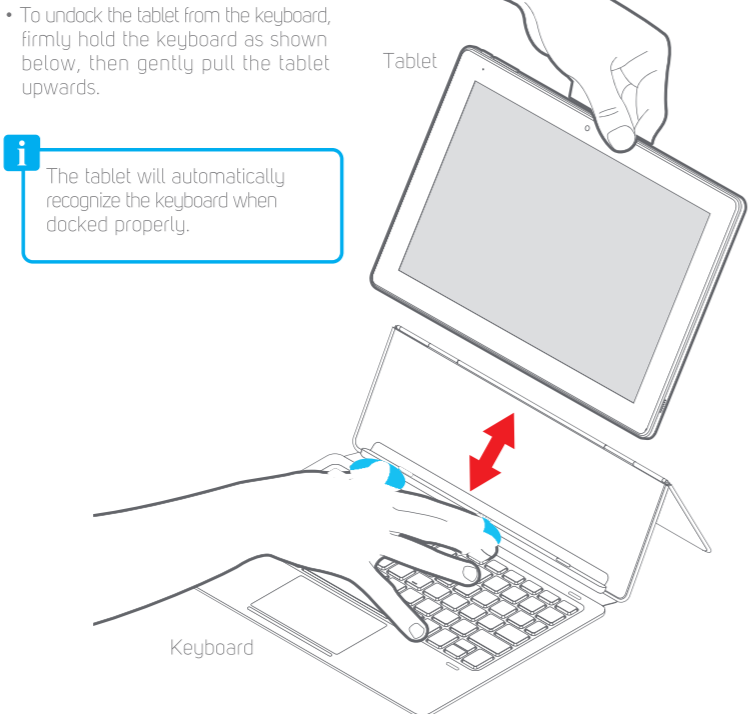
Cast screen

Show your tablet's screen on devices with Miracast Wireless display capabilities:

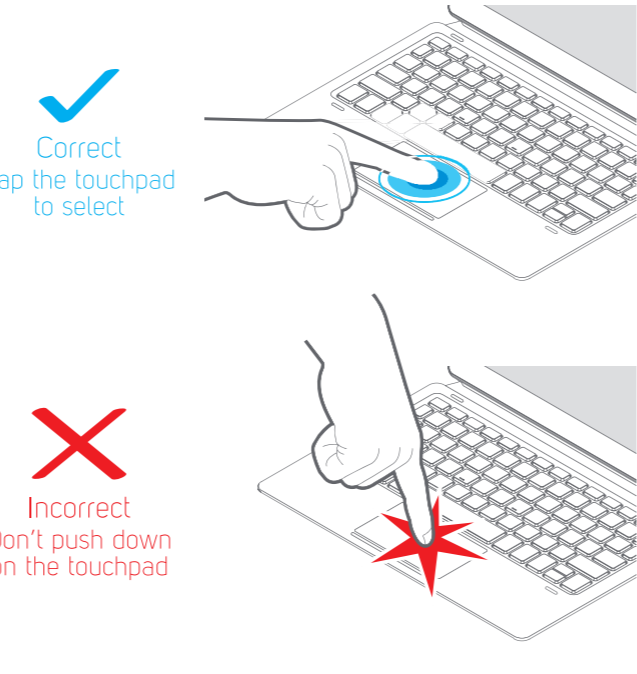
1. Turn on the Miracast feature on your Miracast supported TV or Miracast dongle (not included).
2. Connect your tablet to the same Wi-Fi network as your Miracast enabled TV.
3. Go to Settings > Connected devices > Cast and tap on “”.

Keyboard Dock

- To dock the tablet to the keyboard, align the tablet and the keyboard, then slide the tablet into the dock as shown below.



IMPORTANT
The touchpad does not have a mechanical click. Tap to select.



Legal information

FCC Caution:

Any Changes or modifications not expressly approved by the party responsible for compliance could void the user's authority to operate the equipment.

This device complies with part 15 of the FCC Rules. Operation is subject to the following two conditions: (1) This device may not cause harmful interference, and (2) this device must accept any interference received, including interference that may cause undesired operation.

Note: This equipment has been tested and found to comply with the limits for a Class B digital device, pursuant to part 15 of the FCC Rules. These limits are designed to provide reasonable protection against harmful interference in a residential installation. This equipment generates uses and can radiate radio frequency energy and, if not installed and used in accordance with the instructions, may cause harmful interference to radio communications. However, there is no guarantee that interference will not occur in a particular installation. If this equipment does cause harmful interference to radio or television reception, which can be determined by turning the equipment off and on, the user is encouraged to try to correct the interference by one or more of the following measures:

- Reorient or relocate the receiving antenna.
- Increase the separation between the equipment and receiver.
- Connect the equipment into an outlet on a circuit different from that to which the receiver is connected.
- Consult the dealer or an experienced radio/TV technician for help.

Specific Absorption Rate (SAR) information

SAR tests are conducted using standard operating positions accepted by the FCC with the device transmitting at its highest certified power level in all tested frequency bands, although the SAR is determined at the highest certified power level, the actual SAR level of the device while operating can be well below the maximum value.
Before a new device is a available for sale to the public, it must be tested and certified to the FCC that it does not exceed the exposure limit established by the FCC, tests for each device are performed in positions and locations as required by the FCC.
Non-compliance with the above restrictions may result in violation of RF exposure guidelines.

ISED SAR Warning :

This device contains licence-exempt transmitter(s)/receiver(s) that comply with Innovation, Science and Economic Development Canada's licence-exempt RSS(s). Operation is subject to the following two conditions:
(1) This device may not cause interference, and
(2) This device must accept any interference, including interference that may cause undesired operation of the device.
Cet appareil contient des émetteurs / récepteurs exempts de licence conformes aux RSS (RSS) d'Innovation, Sciences et Développement économique Canada. Le fonctionnement est soumis aux deux conditions suivantes:
(1) Cet appareil ne doit pas causer d'interférences, et
(2) Cet appareil doit accepter toutes les interférences, y compris celles susceptibles de provoquer un fonctionnement indésirable.

7.1.4 Radio Apparatus Containing Digital Circuits (ICES-003)

Radio apparatus containing digital circuitry which can function separately from the operation of a transmitter or an associated transmitter, shall comply with ICES-003. In such cases, the labeling requirements of the applicable RSS apply, rather than the labeling requirements in ICES-003.
Waring :
Class B digital apparatus:
This Class B digital apparatus complies with Canadian ICES-003.
Cet appareil numérique de la classe B est conforme à la norme NMB-003 du Canada.
5GWiFI 5150-5250MHz shall be indoor use only.
ISED SAR Warning :
The device has been tested and compliance with SAR limits, users can obtain Canadian information on RF exposure and compliance. Le présent appareil est conforme
Après examen de ce matériel aux conformités aux limites DAS et/ou aux limites d'intensité de champ RF, les utilisateurs peuvent sur l'exposition aux radiofréquences et la conformité et compliance d'acquies les informations correspondantes

SAR tests are conducted using standard operating positions accepted by the ISED with the device transmitting at its highest certified power level in all tested frequency bands, although the SAR is determined at the highest certified power level, the actual SAR level of the device while operating can be well below the maximum value.

tested and certified to the ISED that it does not exceed the exposure limit established by the ISED, tests for each device are performed in positions and locations as required by the ISED.
Non - compliance with the above restrictions may result in violation of RF exposure guidelines.

Les tests SAR sont effectués à l'aide de positions de fonctionnement standard acceptées par l'ISED, l'appareil transmettant à son niveau de puissance certifié le plus élevé dans toutes les bandes de fréquences testées, bien que le SAR soit déterminé au niveau de puissance certifié le plus élevé, bien en dessous de la valeur maximale.

Le non - respect des restrictions ci - dessus peut entraîner une violation des consignes d'exposition aux RF.

Battery Disposal & Recycle

This device contains a Lithium-ion battery. The battery must be recycled or disposed of properly. Contact your local waste management office for information on battery recycling or disposal. ☎ 1-800-622-8837
Designed and distributed by Southern Telecom Inc. 5601 1st Avenue Brooklyn, NY 11220 © 2018 All Rights Reserved. Made in China.
Packard Bell® is a registered trademark of JMM Lee Properties, LLC and is used under license Google, Android, Google Play and other marks are trademarks of Google LLC; Qreo is a trademark of Mondélez International, Inc. group.
The Bluetooth word mark and logos are owned by the Bluetooth SIG, Inc. All other trademarks and trade names are those of their respective owners.



LIMITED WARRANTY TO ORIGINAL CONSUMER

This Product (including any accessories included in the original packaging) as supplied and distributed new by an authorized retailer is warranted by Southern Telecom, Inc. to the original consumer purchaser against defects in materials and workmanship ("Warranty") as follows:

Product Type: Tablet, Territory: United States/Canada, Parts Warranty: 1 Year, Labor Warranty: 1 Year

To obtain warranty service:

- Call the Customer Support number located below, or go to our website portal to receive an SRO number.
- Provide proof of the date of purchase within the package (Dated bill of sale).
- Prepay all shipping costs to the authorized service center, and remember to insure your return.
- Include a return shipping address (no P.O. Boxes), a telephone contact number, and the defective unit within the package.
- Describe the defect or reason you are returning the product.

Customer Support:
1-877-768-8481 (Toll Free)
Monday - Friday: 8AM - 10PM (EST)
www.southern telecom.com
Click on "Product Support"

Your product will be repaired or replaced, at our option, for the same or similar model of equal value if examination by the service center determines this product is defective. Products received damaged as a result of shipping will require you to file a claim with the carrier.

The shipping address of the authorized service center is:

Customer Service Dept. 36
c/o Southern Telecom
400 Kennedy Drive
Sayreville, NJ 08872

Warranty service not provided

This warranty does not cover damage resulting from accident, misuse, abuse, improper installation or operation, lack of reasonable care, unauthorized modification including software modifications such as the installation of custom firmwares. This warranty is voided in the event any unauthorized person opens, alters or repairs this product. All products being returned to the authorized service center for repair must be suitably packaged.

NO WARRANTIES, WHETHER EXPRESS OR IMPLIED, INCLUDING, BUT NOT LIMITED TO, ANY IMPLIED WARRANTIES OF MERCHANTABILITY OR FITNESS FOR A PARTICULAR PURPOSE, OTHER THAN THOSE EXPRESSLY DESCRIBED ABOVE SHALL APPLY. DISTRIBUTOR FURTHER DISCLAIMS ALL WARRANTIES AFTER THE EXPRESS WARRANTY PERIOD STATED ABOVE. NO OTHER EXPRESS WARRANTY OR GUARANTEE GIVEN BY ANY PERSON, FIRM OR ENTITY WITH RESPECT TO THE PRODUCT SHALL BE BINDING ON DISTRIBUTOR, REPAIR, REPLACEMENT, OR REFUND OF THE ORIGINAL PURCHASE PRICE - AT DISTRIBUTOR'S SOLE DISCRETION - ARE THE EXCLUSIVE REMEDIES OF THE CONSUMER. IN NO EVENT WILL DISTRIBUTOR OR ITS MANUFACTURERS BE LIABLE FOR ANY INCIDENTAL, DIRECT, INDIRECT, SPECIAL, PUNITIVE OR CONSEQUENTIAL DAMAGES (SUCH AS, BUT NOT LIMITED TO, DAMAGES FOR LOSS OF PROFITS, BUSINESS SAVINGS, DATA OR RECORDS) CAUSED BY THE USE, MISUSE OR INABILITY TO USE THE PRODUCT, EXCEPT AS STATED HEREIN. NO OTHER WARRANTIES SHALL APPLY, NOTWITHSTANDING THE FOREGOING, CONSUMER'S RECOVERY AGAINST DISTRIBUTOR SHALL NOT EXCEED THE PURCHASE PRICE OF THE PRODUCT SOLD BY DISTRIBUTOR. THIS WARRANTY SHALL NOT EXTEND TO ANYONE OTHER THAN THE ORIGINAL CONSUMER WHO PURCHASED THE PRODUCT AND IS NOT TRANSFERABLE.

Some countries, states or provinces do not allow the exclusion or limitation of incidental or consequential damages or allow limitations on warranties, so limitation or exclusions may not apply to you. This warranty gives you specific legal rights, and you may have other rights that vary from state to state or province to province. Contact your authorized retailer to determine if another warranty applies.