

FCC

SAR

TEST REPORT

ISSUED BY
Shenzhen BALUN Technology Co., Ltd.



FOR
Tablet PC

ISSUED TO
Shenzhen Jingwah Information Technology Co., Ltd.

4F, Bldg 4, Jinghua Square, No.1 Huafa North Road, Shenzhen, China



Tested by: *Zong Liyao*
Zong Liyao
(Engineer)

Date *Sep. 25, 2018*

Approved by: *Wei Yanquan*
Wei Yanquan
(Chief Engineer)

Date *Sep. 25, 2018*

Report No.: BL-SZ1880007-701

EUT Name: Tablet PC

Model Name: BNTV650

Brand Name: NOOK

FCC ID: RBD-BNTV650

Test Standard: FCC 47 CFR Part 2.1093

ANSI C95.1: 1999

IEEE 1528: 2013

Maximum SAR: Body (1 g): 1.007 W/kg

Test Conclusion: Pass

Test Date: Aug. 20, 2018 ~ Aug. 22, 2018

Date of Issue: Sep. 25, 2018

NOTE: This test report of test results only related to testing samples, which can be duplicated completely for the legal use with the approval of the applicant; it shall not be reproduced except in full, without the written approval of Shenzhen BALUN Technology Co., Ltd. BALUN Laboratory. Any objections should be raised within thirty days from the date of issue. To validate the report, please contact us.

Revision History

<u>Version</u>	<u>Issue Date</u>	<u>Revisions Content</u>
<u>Rev. 01</u>	<u>Sep. 25, 2018</u>	<u>Initial Issue</u>

TABLE OF CONTENTS

1	ADMINISTRATIVE DATA (GENERAL INFORMATION)	4
1.1	Identification of the Testing Laboratory	4
1.2	Identification of the Responsible Testing Location	4
1.3	Test Environment Condition	4
1.4	Announce	4
2	PRODUCT INFORMATION	5
2.1	Applicant Information	5
2.2	Manufacturer Information	5
2.3	Factory Information	5
2.4	General Description for Equipment under Test (EUT)	5
2.5	Ancillary Equipment	6
2.6	Technical Information	7
3	SUMMARY OF TEST RESULTS	8
3.1	Test Standards	8
3.2	Device Category and SAR Limit	8
3.3	Test Result Summary	10
3.4	Test Uncertainty	11
4	SAR MEASUREMENT SYSTEM	12
4.1	Definition of Specific Absorption Rate (SAR)	12
4.2	SATIMO SAR System	12
5	SYSTEM VERIFICATION	21
5.1	Antenna Port Test Requirement	21
5.2	Purpose of System Check	21
5.3	System Check Setup	21
6	EUT TEST POSITION CONFIGURATIONS	22
6.1	Tablet Exposure Condition	22

7	SAR MEASUREMENT PROCEDURES.....	23
7.1	SAR Measurement Process Diagram	23
7.2	SAR Scan General Requirements	24
7.3	SAR Measurement Procedure	25
7.4	Area & Zoom Scan Procedures	25
8	CONDUCTED RF OUPUT POWER	26
8.1	WIFI.....	26
8.2	Bluetooth	28
9	EUT ANTENNA LOCATION SKETCH	29
9.1	SAR Test Exclusion Consider Table	30
10	TEST RESULTS	31
10.1	WIFI 2.4GHZ.....	31
10.2	WIFI 5GHZ.....	31
10.3	Bluetooth	31
11	SAR Measurement Variability	32
12	SIMULTANEOUS TRANSMISSION.....	33
13	TEST EQUIPMENTS LIST	34
ANNEX A	SIMULATING LIQUID VERIFICATION RESULT	35
ANNEX B	SYSTEM CHECK RESULT	36
ANNEX C	TEST DATA.....	45
ANNEX D	EUT EXTERNAL PHOTOS	50
ANNEX E	SAR TEST SETUP PHOTOS	50
ANNEX F	CALIBRATION REPORT.....	50

1 ADMINISTRATIVE DATA (GENERAL INFORMATION)

1.1 Identification of the Testing Laboratory

Company Name	Shenzhen BALUN Technology Co., Ltd.
Address	Block B, 1st FL, Baisha Science and Technology Park, Shahe Xi Road, Nanshan District, Shenzhen, Guangdong Province, P. R. China
Phone Number	+86 755 6685 0100

1.2 Identification of the Responsible Testing Location

Test Location	Shenzhen BALUN Technology Co., Ltd.
Address	Block B, 1st FL, Baisha Science and Technology Park, Shahe Xi Road, Nanshan District, Shenzhen, Guangdong Province, P. R. China
Accreditation Certificate	<p>The laboratory has been listed by Industry Canada to perform electromagnetic emission measurements. The recognition numbers of test site are 11524A-1.</p> <p>The laboratory is a testing organization accredited by FCC as a accredited testing laboratory. The designation number is CN1196.</p> <p>The laboratory is a testing organization accredited by American Association for Laboratory Accreditation (A2LA) according to ISO/IEC 17025. The accreditation certificate is 4344.01.</p> <p>The laboratory is a testing organization accredited by China National Accreditation Service for Conformity Assessment (CNAS) according to ISO/IEC 17025. The accreditation certificate number is L6791.</p>
Description	All measurement facilities used to collect the measurement data are located at Block B, FL 1, Baisha Science and Technology Park, Shahe Xi Road, Nanshan District, Shenzhen, Guangdong Province, P. R. China 518055

1.3 Test Environment Condition

Ambient Temperature	20°C to 23°C
Ambient Relative Humidity	37% to 48%
Ambient Pressure	100 to 102KPa

1.4 Announce

- (1) The test report reference to the report template version v2.3.
- (2) The test report is invalid if not marked with the signatures of the persons responsible for preparing and approving the test report.
- (3) The test report is invalid if there is any evidence and/or falsification.
- (4) The results documented in this report apply only to the tested sample, under the conditions and modes of operation as described herein.
- (5) This document may not be altered or revised in any way unless done so by BALUN and all revisions are duly noted in the revisions section.
- (6) Content of the test report, in part or in full, cannot be used for publicity and/or promotional purposes without prior written approval from the laboratory.

2 PRODUCT INFORMATION

2.1 Applicant Information

Applicant	Shenzhen Jingwah Information Technology Co., Ltd.
Address	4F, Bldg 4, Jinghua Square, No.1 Huafa North Road, Shenzhen, China

2.2 Manufacturer Information

Manufacturer	Shenzhen Jingwah Information Technology Co., Ltd.
Address	4F, Bldg 4, Jinghua Square, No.1 Huafa North Road, Shenzhen, China

2.3 Factory Information

Factory	Shenzhen Jingwah Information Technology Co., Ltd.
Address	4F, Bldg 4, Jinghua Square, No.1 Huafa North Road, Shenzhen, China

2.4 General Description for Equipment under Test (EUT)

EUT Name	Tablet PC
Model Name Under Test	BNTV650
Series Model Name	N/A
Description of Model Name Differentiation	N/A
Hardware Version	TS108-V1.0 L6
Software Version	BNTV650
Dimensions (Approx.)	N/A
Weight (Approx.)	N/A

2.5 Ancillary Equipment

Ancillary Equipment 1	Battery	
	Brand Name	Great Power
	Model No.	GSP30134138
	Serial No.	N/A
	Capacitance	6300 mAh
	Rated Voltage	3.7 V
	Extreme Voltage	4.2 V
Ancillary Equipment 2	Charger	
	Brand Name	TIANYIN
	Model No.	TPA-46050200UU
	Rated Input	100-240 V~, 0.15 A, 50/60 Hz
	Rated Output	5 V $\overline{\text{---}}$, 2 A
Ancillary Equipment 3	USB Cable	
	Length	1.0 m

2.6 Technical Information

Network and Wireless connectivity	WIFI 802.11a, 802.11b, 802.11g, 802.11n(HT20/40), 802.11ac(VHT20/40/80); Bluetooth
-----------------------------------	--

The requirement for the following technical information of the EUT was tested in this report:

Operating Mode	2.4G WLAN, 5G WLAN, Bluetooth	
Frequency Range	802.11b/g /n(HT20/HT40)	2400 ~ 2483.5 MHz
	802.11a/ /n(HT20/HT40) /ac(VHT20/VHT40/ VHT80)	5150 ~ 5250 MHz
		5250 ~ 5350 MHz
		5470 ~ 5725 MHz
	Bluetooth	2400 ~ 2483.5 MHz
Antenna Type	PIFA Antenna	
Hotspot Function	N/A	
Power Reduction	Not Support	
Exposure Category	General Population/Uncontrolled exposure	
EUT Stage	Portable Device	
Product	Type	
	<input checked="" type="checkbox"/> Production unit	<input type="checkbox"/> Identical prototype

3 SUMMARY OF TEST RESULTS

3.1 Test Standards

No.	Identity	Document Title
1	47 CFR Part 2	Frequency Allocations and Radio Treaty Matters; General Rules and Regulations
2	ANSI/IEEE Std. C95.1-1999	IEEE Standard for Safety Levels with Respect to Human Exposure to Radio Frequency Electromagnetic Fields, 3 kHz to 300 GHz
3	IEEE Std. 1528-2013	Recommended Practice for Determining the Peak Spatial-Average Specific Absorption Rate (SAR) in the Human Head from Wireless Communications Devices: Measurement Techniques
4	FCC KDB 447498 D01 v06	Mobile and Portable Device RF Exposure Procedures and Equipment Authorization Policies
5	FCC KDB 865664 D01 v01r04	SAR Measurement 100 MHz to 6 GHz
6	FCC KDB 865664 D02 v01r02	RF Exposure Reporting
7	KDB 248227 D01 v02r02	SAR Guidance for IEEE 802.11 (Wi-Fi) Transmitters
8	KDB 616217 D04 v01r02	SAR for laptop and tablets

3.2 Device Category and SAR Limit

This device belongs to portable device category because its radiating structure is allowed to be used within 20 centimeters of the body of the user. Limit for General Population/Uncontrolled exposure should be applied for this device, it is 1.6 W/kg as averaged over any 1 gram of tissue.

Table of Exposure Limits:

Body Position	SAR Value (W/Kg)	
	General Population/ Uncontrolled Exposure	Occupational/ Controlled Exposure
Whole-Body SAR (averaged over the entire body)	0.08	0.4
Partial-Body SAR (averaged over any 1 gram of tissue)	1.60	8.0
SAR for hands, wrists, feet and ankles (averaged over any 10 grams of tissue)	4.0	20.0

NOTE:

General Population/Uncontrolled: Locations where there is the exposure of individuals who have no knowledge or control of their exposure. General population/uncontrolled exposure limits are applicable to situations in which the general public may be exposed or in which persons who are exposed as a consequence of their employment may not be made fully aware of the potential for exposure or cannot exercise control over their exposure. Members of the general public would come under this category when exposure is not employment-related; for example, in the case of a wireless transmitter that exposes persons in its vicinity.

Occupational/Controlled: Locations where there is exposure that may be incurred by persons who are aware of the potential for exposure, In general, occupational/controlled exposure limits are applicable to situations in which persons are exposed as a consequence of their employment, who have been made fully aware of the potential for exposure and can exercise control over their exposure. This exposure category is also applicable when the exposure is of a transient nature due to incidental passage through a location where the exposure levels may be higher than the general population/uncontrolled limits, but the exposed person is fully aware of the potential for exposure and can exercise control over his or her exposure by leaving the area or by some other appropriate means.

3.3 Test Result Summary

3.3.1 Highest SAR (1 g Value)

Band	Maximum Scaled SAR (W/kg)	Maximum Report SAR (W/kg)	Limit (W/kg)
	Body	Body	
WLAN 2.4G	1.007	1.007	1.6
WLAN 5.3G	0.725		
WLAN 5.6G	0.544		
WLAN 5.8G	0.465		
Bluetooth	0.920		
Verdict	Pass		

3.3.2 Highest Simultaneous SAR

The product has only one antenna for WLAN and Bluetooth, and can't transmit at the same time, so the Simultaneous SAR is not required on this report.

3.4 Test Uncertainty

According to KDB 865664 D01, when the highest measured 1 g SAR within a frequency band is < 1.5 W/kg, the extensive SAR measurement uncertainty analysis is not required in SAR reports submitted for equipment approval.

The maximum 1 g SAR for the EUT in this report is 1.007 W/kg, which is lower than 1.5 W/kg, so the extensive SAR measurement uncertainty analysis is not required in this report.

4 SAR MEASUREMENT SYSTEM

4.1 Definition of Specific Absorption Rate (SAR)

SAR is related to the rate at which energy is absorbed per unit mass in an object exposed to a radio field. The SAR distribution in a biological body is complicated and is usually carried out by experimental techniques or numerical modeling. The standard recommends limits for two tiers of groups, occupational/controlled and general population/uncontrolled, based on a person's awareness and ability to exercise control over his or her exposure. In general, occupational / controlled exposure limits are higher than the limits for general population /uncontrolled.

The SAR definition is the time derivative (rate) of the incremental energy (dW) absorbed by (dissipated in) an incremental mass (dm) contained in a volume element (dv) of a given density (ρ). The equation description is as below:

$$\text{SAR} = \frac{d}{dt} \left(\frac{dW}{dm} \right) = \frac{d}{dt} \left(\frac{dW}{\rho dv} \right)$$

SAR is expressed in units of Watts per kilogram (W/kg) SAR measurement can be related to the electrical field in the tissue by

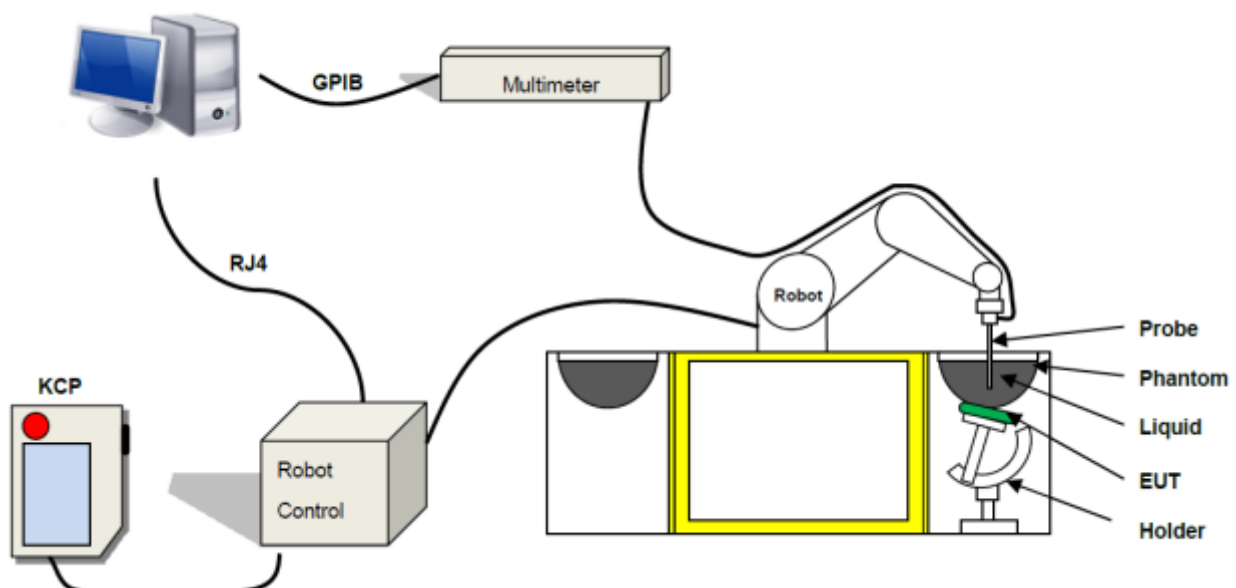
$$\text{SAR} = \frac{\sigma E^2}{\rho}$$

Where: σ is the conductivity of the tissue,

ρ is the mass density of the tissue and E is the RMS electrical field strength.

4.2 SATIMO SAR System

4.2.1 SATIMO SAR System Diagram



These measurements were performed with the automated near-field scanning system OPENSAR from SATIMO. The system is based on a high precision robot (working range: 850 mm), which positions the probes with a positional repeatability of better than ± 0.02 mm. Special E- and H-field probes have been developed for measurements close to material discontinuity, the sensors of which are directly loaded with a Schottky diode and connected via highly resistive lines to the data acquisition unit.

The SAR measurements were conducted with dosimetric probe (manufactured by SATIMO), designed in the classical triangular configuration and optimized for dosimetric evaluation. The probe has been calibrated according to the procedure described in SAR standard with accuracy of better than $\pm 10\%$. The spherical isotropy was evaluated with the procedure described in SAR standard and found to be better than ± 0.25 dB. The phantom used was the SAM Phantom as described in FCC supplement C, IEEE P1528.

4.2.2 Robot

The SATIMO SAR system uses the high precision robots from KUKA. For the 6-axis controller system, the robot controller version (KUKA) from KUKA is used. The KUKA robot series have many features that are important for our application:



- High precision (repeatability ± 0.035 mm)
- High reliability (industrial design)
- Jerk-free straight movements
- Low ELF interference (the closed metallic construction shields against motor control fields)

4.2.3 E-Field Probe

For the measurements the Specific Dosimetric E-Field Probe SN 08 /16 EPGO 295 with following specifications is used

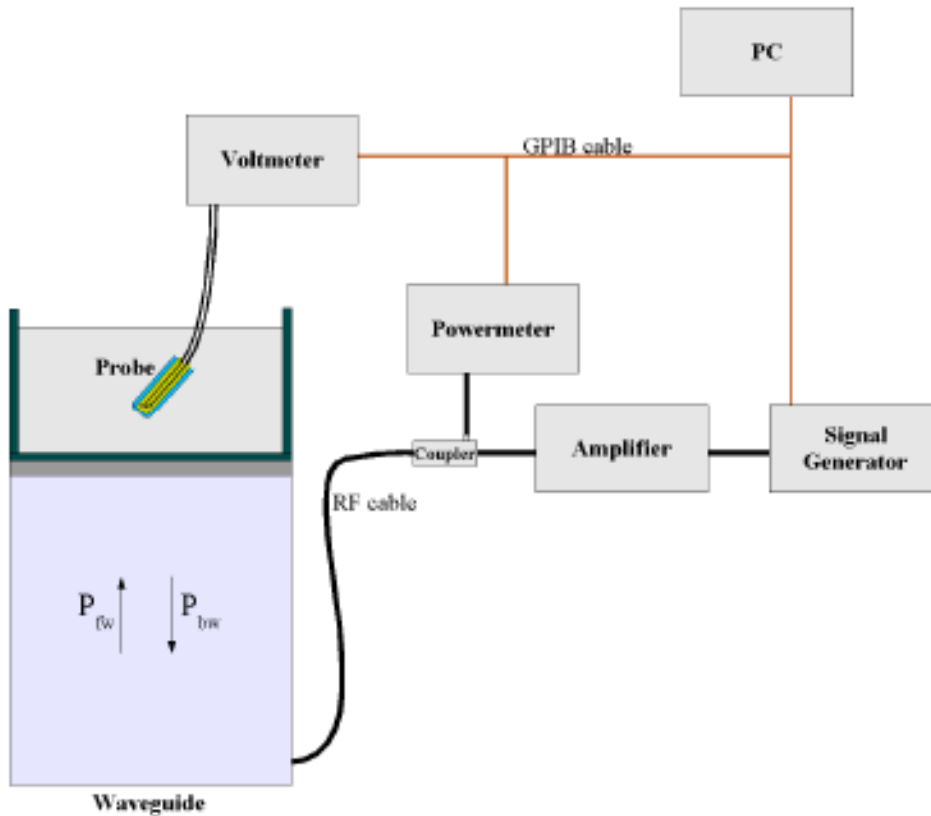
- Dynamic range: 0.01-100 W/kg
- Tip Diameter : 2.5 mm
- Lower detection limit : 10 mW/kg
(repeatability better than ± 1 mm)
- Probe linearity: ± 0.07 dB
- Calibration range: 300 MHz to 6000 MHz for head & body simulating liquid.

Angle between probe axis (evaluation axis) and surface normal line: less than 30°



E-Field Probe Calibration Process

Probe calibration is realized, in compliance with CENELEC EN 62209-1/-2 and IEEE 1528 std, with CALISAR, Antenna proprietary calibration system. The calibration is performed with the IEC62209-1/2 annexe technique using reference guide at the five frequencies.



$$SAR = \frac{4(P_{fw} - P_{bw})}{ab\sigma} \cos^2 \left(\pi \frac{y}{a} \right) c^{(2\pi/\sigma)}$$

Where :

- P_{fw} = Forward Power
- P_{bw} = Backward Power
- a and b = Waveguide Dimensions
- l = Skin Depth

Keithley configuration

Rate = Medium; Filter =ON; RDGS=10; FILTER TYPE =MOVING AVERAGE; RANGE AUTO After each calibration, a SAR measurement is performed on a validation dipole and compared with a NPL calibrated probe, to verify it.

The calibration factors, CF(N), for the 3 sensors corresponding to dipole 1, dipole 2 and dipole 3 are:

$$CF(N)=SAR(N)/V_{lin}(N) \quad (N=1,2,3)$$

The linearised output voltage $V_{lin}(N)$ is obtained from the displayed output voltage $V(N)$ using

$$V_{lin}(N)=V(N)*(1+V(N)/DCP(N)) \quad (N=1,2,3)$$

Where the DCP is the diode compression point in mV.

4.2.4 Phantoms

For the measurements the Specific Anthropomorphic Mannequin (SAM) defined by the IEEE SCC-34/SC2 group is used. The phantom is a polyurethane shell integrated in a wooden table. The thickness of the phantom amounts to 2mm +/- 0.2mm. It enables the dosimetric evaluation of left and right phone usage and includes an additional flat phantom part for the simplified performance check. The phantom set-up includes a cover, which prevents the evaporation of the liquid.

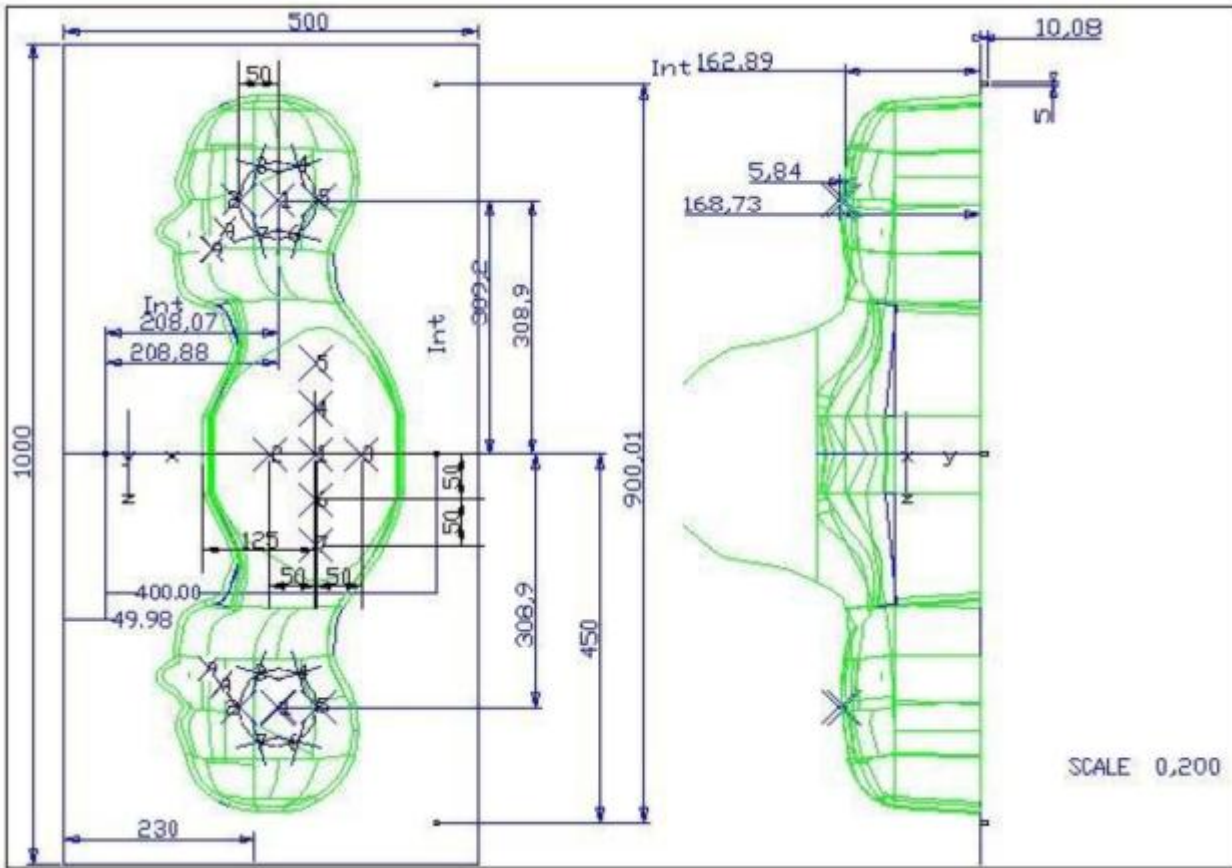
Photo of Phantom SN 30/13 SAM103



Photo of Phantom SN 30/13 SAM104



Serial Number	Positionner Material	Permittivity	Loss Tangent
SN 30/13 SAM103	Gelcoat with fiberglass	3.4	0.02
SN 30/13 SAM104	Gelcoat with fiberglass	3.4	0.02



Serial Number	Left Head		Right Head		Flat Part	
SN 30/13 SAM103	2	2.00	2	2.03	1	2.09
	3	2.02	3	2.05	2	2.10
	4	2.04	4	2.04	3	2.09
	5	2.04	5	2.07	4	2.11
	6	2.02	6	2.07	5	2.11
	7	2.01	7	2.09	6	2.09
	8	2.04	8	2.10	7	2.11
	9	2.02	9	2.09	-	-
	SN 30/13 SAM104	2	2.05	2	2.06	1
3		2.08	3	2.03	2	2.03
4		2.05	4	2.03	3	2.01
5		2.06	5	2.02	4	2.03
6		2.08	6	2.02	5	2.03
7		2.06	7	2.04	6	2.00
8		2.07	8	2.04	7	1.98
9		2.07	9	2.05	-	-

4.2.5 Device Holder

The SAR in the phantom is approximately inversely proportional to the square of the distance between the source and the liquid surface. For a source at 5 mm distance, a positioning uncertainty of ± 0.5 mm would produce a SAR uncertainty of ± 20 %. Accurate device positioning is therefore crucial for accurate and repeatable measurements. The positions in which the devices must be measured are defined by the standards.

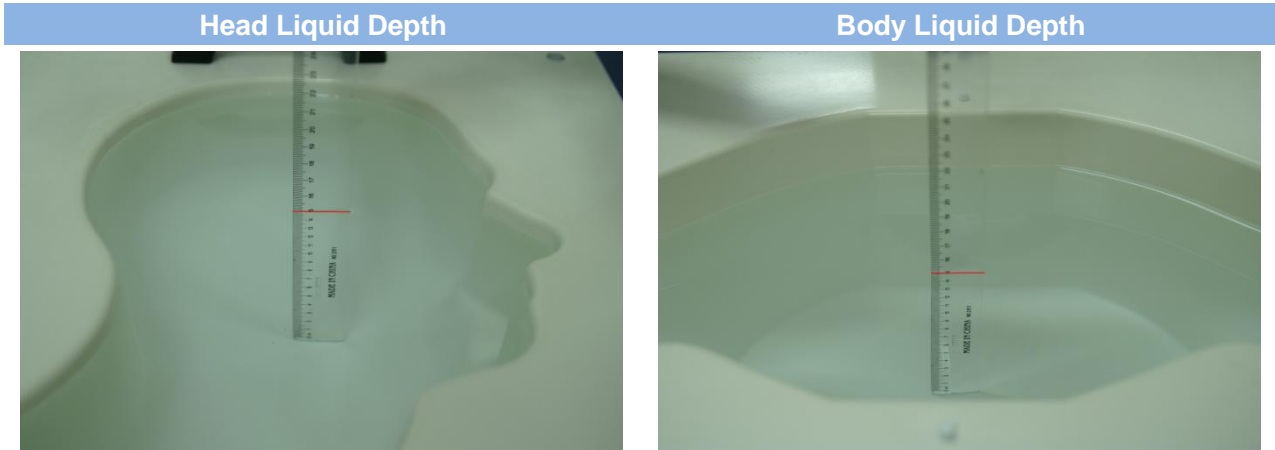


Serial Number	Holder Material	Permittivity	Loss Tangent
SN 25/13 MSH87	Deirin	3.7	0.005
SN 25/13 MSH88	Deirin	3.7	0.005

The positioning system allows obtaining cheek and tilting position with a very good accuracy. In compliance with CENELEC, the tilt angle uncertainty is lower than 1° .

4.2.6 Simulating Liquid

For SAR measurement of the field distribution inside the phantom, the phantom must be filled with homogeneous tissue simulating liquid to a depth of at least 15 cm. For head SAR testing, the liquid height from the ear reference point (ERP) of the phantom to the liquid top surface is larger than 15 cm. For body SAR testing, the liquid height from the center of the flat phantom to the liquid top surface is larger than 15 cm. The nominal dielectric values of the tissue simulating liquids in the phantom and the tolerance of 5%.



The following table gives the recipes for tissue simulating liquid and the theoretical Conductivity/Permittivity.

Head (Reference IEEE1528)								
Frequency (MHz)	Water (%)	Sugar (%)	Cellulose (%)	Salt (%)	Preventol (%)	DGBE (%)	Conductivity σ (S/m)	Permittivity ϵ
750	41.1	57.0	0.2	1.4	0.2	0	0.89	41.9
835	40.3	57.9	0.2	1.4	0.2	0	0.90	41.5
900	40.3	57.9	0.2	1.4	0.2	0	0.97	41.5
1800, 1900, 2000	55.2	0	0	0.3	0	44.5	1.4	40.0
2450	55.0	0	0	0.1	0	44.9	1.80	39.2
2600	54.9	0	0	0.1	0	45.0	1.96	39.0
Frequency(MHz)	Water (%)	Hexyl Carbitol (%)			Triton X-100 (%)		Conductivity σ (S/m)	Permittivity ϵ
5200	62.52	17.24			17.24		4.66	36.0
5800	62.52	17.24			17.24		5.27	35.3
Body (From instrument manufacturer)								
Frequency (MHz)	Water (%)	Sugar (%)	Cellulose (%)	Salt (%)	Preventol (%)	DGBE (%)	Conductivity σ (S/m)	Permittivity ϵ
750	51.7	47.2	0	0.9	0.1	0	0.96	55.5
835	50.8	48.2	0	0.9	0.1	0	0.97	55.2
900	50.8	48.2	0	0.9	0.1	0	1.05	55.0
1800, 1900, 2000	70.2	0	0	0.4	0	29.4	1.52	53.3
2450	68.6	0	0	0.1	0	31.3	1.95	52.7
2600	68.2	0	0	0.1	0	31.7	2.16	52.5

Frequency(MHz)	Water	DGBE (%)	Salt (%)	Conductivity σ (S/m)	Permittivity ϵ
5200	78.60	21.40	/	5.54	47.86
5800	78.50	21.40	0.1	6.0	48.20

5 SYSTEM VERIFICATION

5.1 Antenna Port Test Requirement

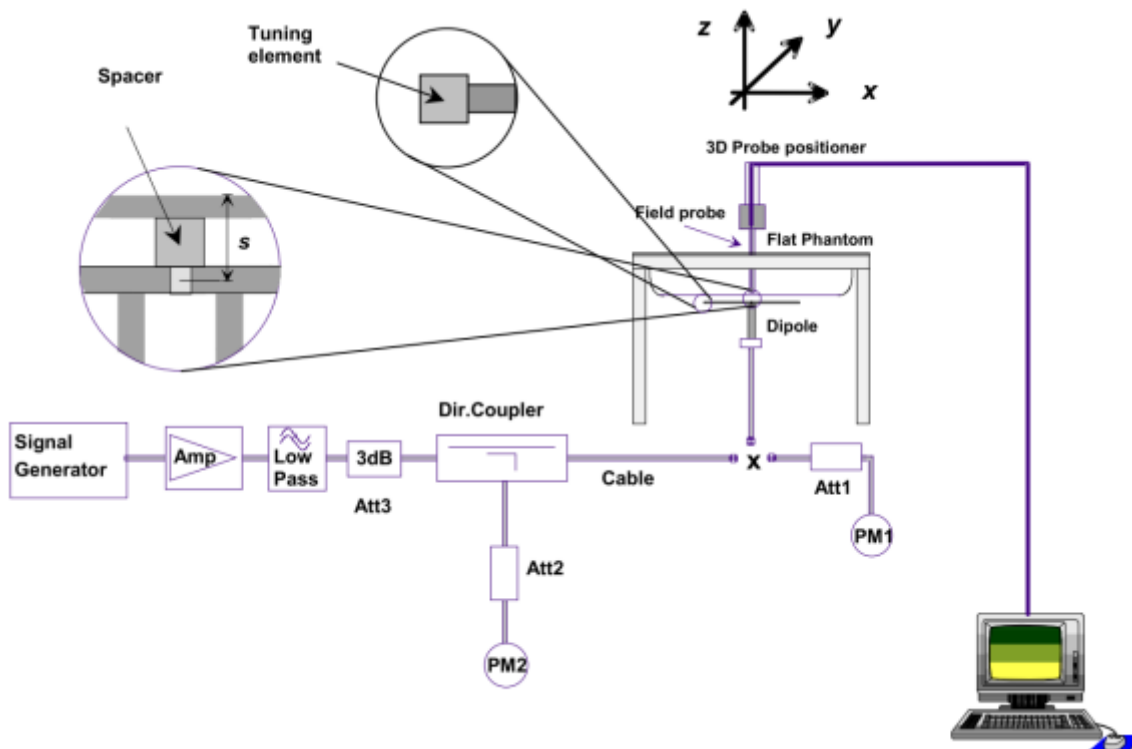
The SATIMO SAR system is equipped with one or more system validation kits. These units together with the predefined measurement procedures within the SATIMO software enable the user to conduct the system performance check and system validation. System validation kit includes a dipole, tripod holder to fix it underneath the flat phantom and a corresponding distance holder.

5.2 Purpose of System Check

The system performance check verifies that the system operates within its specifications. System and operator errors can be detected and corrected. It is recommended that the system performance check be performed prior to any usage of the system in order to guarantee reproducible results. The system performance check uses normal SAR measurements in a simplified setup with a well characterized source. This setup was selected to give a high sensitivity to all parameters that might fail or vary over time. The system check does not intend to replace the calibration of the components, but indicates situations where the system uncertainty is exceeded due to drift or failure.

5.3 System Check Setup

In the simplified setup for system evaluation, the EUT is replaced by a calibrated dipole and the power source is replaced by a continuous wave that comes from a signal generator. The calibrated dipole must be placed beneath the flat phantom section of the SAM twin phantom with the correct distance holder. The distance holder should touch the phantom surface with a light pressure at the reference marking and be oriented parallel to the long side of the phantom. The equipment setup is shown below:



6 EUT TEST POSITION CONFIGURATIONS

6.1 Tablet Exposure Condition

This DUT was tested in two different positions. They are back side and Left edge in these positions, the surface of DUT is touching with phantom 0mm.

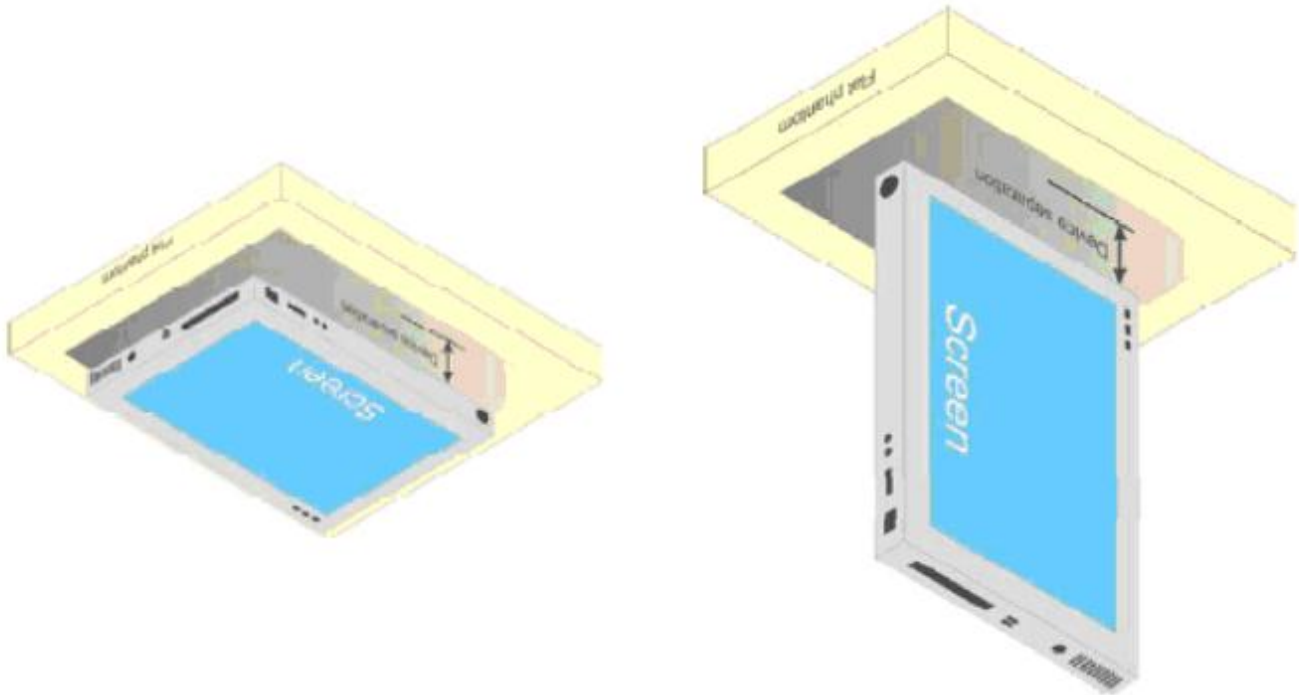
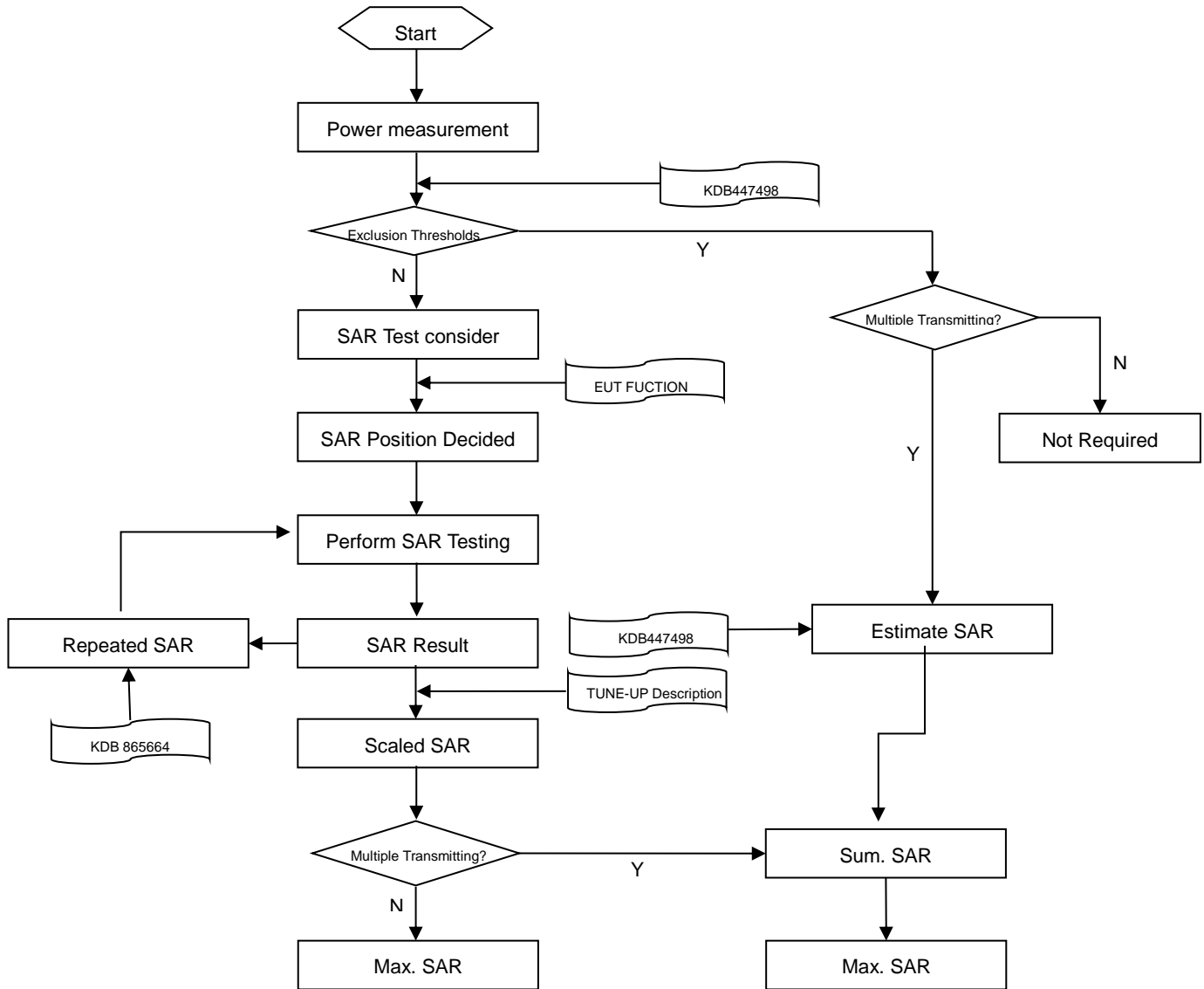


Fig Illustration for Lap-touching Position

7 SAR MEASUREMENT PROCEDURES

7.1 SAR Measurement Process Diagram



7.2 SAR Scan General Requirements

Probe boundary effect error compensation is required for measurements with the probe tip closer than half a probe tip diameter to the phantom surface. Both the probe tip diameter and sensor offset distance must satisfy measurement protocols; to ensure probe boundary effect errors are minimized and the higher fields closest to the phantom surface can be correctly measured and extrapolated to the phantom surface for computing 1-g SAR. Tolerances of the post-processing algorithms must be verified by the test laboratory for the scan resolutions used in the SAR measurements, according to the reference distribution functions specified in IEEE Std 1528-2013.

		≤3GHz	>3GHz
Maximum distance from closest measurement point (geometric center of probe sensors) to phantom surface		5±1 mm	$\frac{1}{2} \cdot \delta \cdot \ln(2) \pm 0.5$ mm
Maximum probe angle from probe axis to phantom surface normal at the measurement location		30°±1°	20°±1°
Maximum area scan spatial resolution: Δx Area , Δy Area		≤ 2 GHz: ≤ 15 mm 2 – 3 GHz: ≤ 12 mm	3–4 GHz: ≤ 12 mm 4 – 6 GHz: ≤ 10 mm
		When the x or y dimension of the test device, in the measurement plane orientation, is smaller than the above, the measurement resolution must be ≤ the corresponding x or y dimension of the test device with at least one measurement point on the test device.	
Maximum zoom scan spatial resolution: Δx Zoom , Δy Zoom		≤ 2 GHz: ≤ 8 mm 2 – 3 GHz: ≤ 5 mm*	3–4 GHz: ≤ 5 mm* 4 – 6 GHz: ≤ 4 mm*
Maximum zoom scan spatial resolution, normal to phantom surface	uniform grid: Δz Zoom (n)	≤ 5 mm	3–4 GHz: ≤ 4 mm
			4–5 GHz: ≤ 3 mm
			5–6 GHz: ≤ 2 mm
	graded grid	Δz Zoom (1): between 1st two points closest to phantom surface Δz Zoom (n>1): between subsequent points	≤ 4 mm
4–5 GHz: ≤ 2.5 mm			
		≤ 1.5 · Δz Zoom (n-1)	
Minimum zoom scan volume	x, y, z	≥30 mm	3–4 GHz: ≥ 28 mm
			4–5 GHz: ≥ 25 mm
			5–6 GHz: ≥ 22 mm
Note: 1. δ is the penetration depth of a plane-wave at normal incidence to the tissue medium; see draft standard IEEE P1528-2011 for details. 2. * When zoom scan is required and the reported SAR from the area scan based 1-g SAR estimation procedures of KDB 447498 is ≤ 1.4 W/kg, ≤ 8 mm, ≤ 7 mm and ≤ 5 mm zoom scan resolution may be applied, respectively, for 2 GHz to 3GHz, 3 GHz to 4 GHz and 4 GHz to 6 GHz.			

7.3 SAR Measurement Procedure

The following steps are used for each test position

- Establish a call with the maximum output power with a base station simulator. The connection between the mobile and the base station simulator is established via air interface
- Measurement of the local E-field value at a fixed location. This value serves as a reference value for calculating a possible power drift.
- Measurement of the SAR distribution with a grid of 8 to 16mm * 8 to 16 mm and a constant distance to the inner surface of the phantom. Since the sensors cannot directly measure at the inner phantom surface, the values between the sensors and the inner phantom surface are extrapolated. With these values the area of the maximum SAR is calculated by an interpolation scheme.
- Around this point, a cube of 30 * 30 * 30 mm or 32 * 32 * 32 mm is assessed by measuring 5 or 8 * 5 or 8*4 or 5 mm. With these data, the peak spatial-average SAR value can be calculated.

7.4 Area & Zoom Scan Procedures

First Area Scan is used to locate the approximate location(s) of the local peak SAR value(s). The measurement grid within an Area Scan is defined by the grid extent, grid step size and grid offset. Next, in order to determine the EM field distribution in a three-dimensional spatial extension, Zoom Scan is required. The Zoom Scan is performed around the highest E-field value to determine the averaged SAR-distribution over 10 g. Area scan and zoom scan resolution setting follows KDB 865664 D01 quoted below.

When the 1-g SAR of the highest peak is within 2 dB of the SAR limit, additional zoom scans are required for other peaks within 2 dB of the highest peak that have not been included in any zoom scan to ensure there is no increase in SAR.

8 CONDUCTED RF OUTPUT POWER

8.1 WIFI

8.1.1 2.4GWIFI

Band (GHz)	Mode	Channel	Freq. (MHz)	Avg. Power (dBm)	tune-up Limit power (dBm)	SAR Test Require.
2.4 (2.4~2.4835)	802.11b	1	2412	15.09	15.50	Yes
		6	2437	14.83	15.50	Yes
		11	2462	13.89	15.50	Yes
	802.11g	1	2412	13.69	14.00	No
		6	2437	13.40	14.00	No
		11	2462	12.56	14.00	No
	802.11n(HT20)	1	2412	13.58	14.00	No
		6	2437	13.32	14.00	No
		11	2462	12.42	14.00	No
	802.11n(HT40)	3	2422	11.65	12.00	No
		6	2437	11.36	12.00	No
		9	2452	11.09	12.00	No

8.1.2 5GWIFI

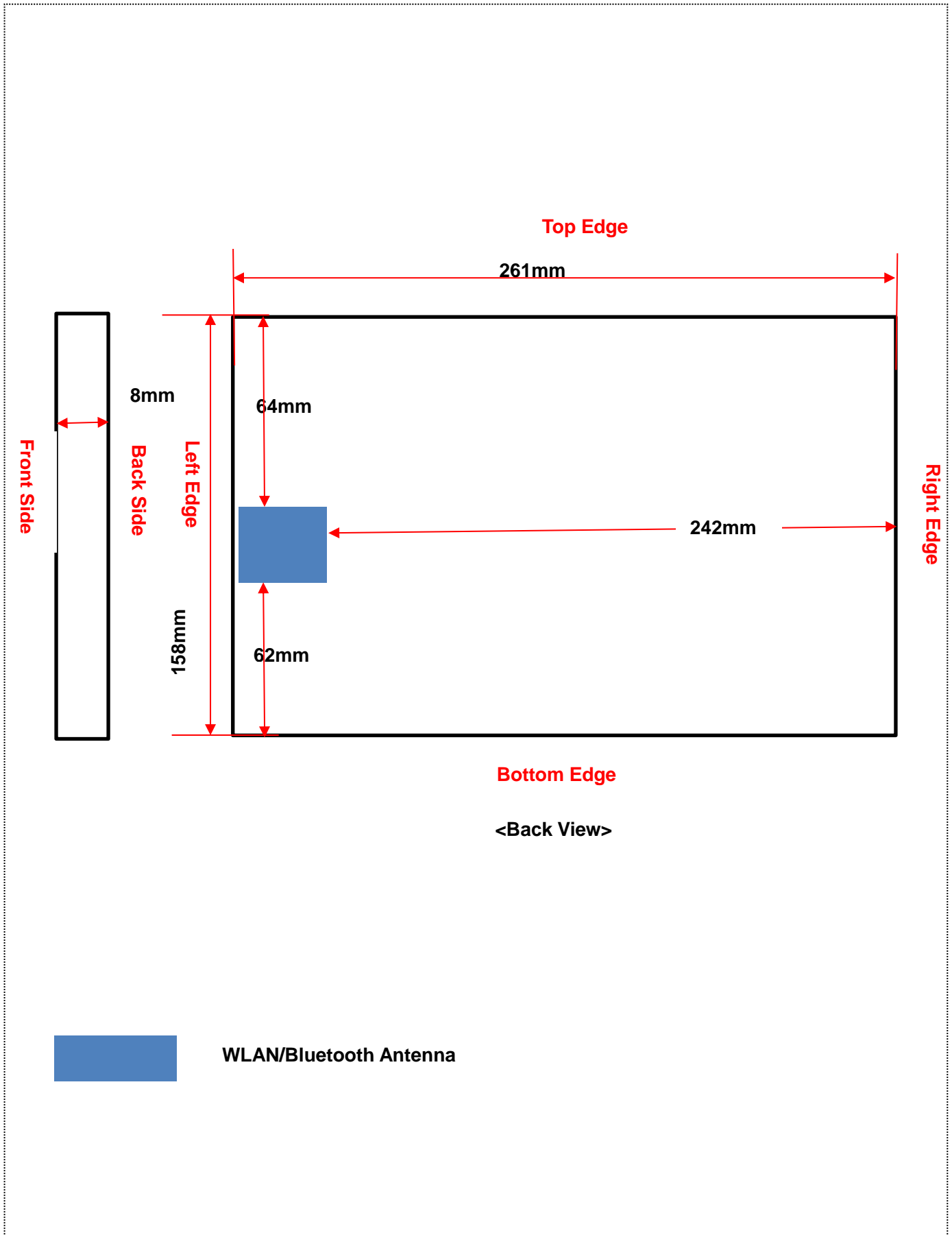
Band (GHz)	Mode	Channel	Freq. (MHz)	Avg. Power (dBm)	tune-up Limit power (dBm)	SAR Test Require.
5.2 (5.15~5.25)	802.11a	36	5180	9.80	10.00	No
		44	5220	8.26	10.00	No
		48	5240	9.00	10.00	No
	802.11n(HT20)	36	5180	9.67	10.00	No
		44	5220	9.30	10.00	No
		48	5240	9.71	10.00	No
	802.11n(HT40)	38	5190	8.84	9.50	No
		46	5230	8.89	9.50	No
	802.11ac(VHT20)	36	5180	9.57	10.00	No
		44	5220	9.26	10.00	No
		48	5240	9.55	10.00	No
	802.11ac(VHT40)	38	5190	9.06	9.50	No
		46	5230	9.11	9.50	No
	802.11ac(VHT80)	42	5210	8.71	9.50	No
	5.3 (5.25~5.35)	802.11a	52	5260	9.81	10.00
56			5280	8.27	10.00	No
64			5320	8.73	10.00	No
802.11n(HT20)		52	5260	9.13	10.00	No
		56	5280	8.51	10.00	No
		64	5320	9.02	10.00	No

	802.11n(HT40)	54	5270	8.19	9.50	No
		62	5310	7.92	9.50	No
	802.11ac(VHT20)	52	5260	8.98	9.50	No
		56	5280	8.32	9.50	No
		64	5320	8.83	9.50	No
	802.11ac(VHT40)	54	5270	8.38	9.00	No
		62	5310	8.16	9.00	No
802.11ac(VHT80)	58	5290	8.47	9.00	No	
5.6 (5.47~5.725)	802.11a	100	5500	9.90	11.00	No
		116	5580	9.89	11.00	No
		140	5700	10.50	11.00	Yes
	802.11n(HT20)	100	5500	9.75	10.00	No
		116	5580	9.87	10.00	No
		140	5700	9.84	10.00	No
	802.11n(HT40)	102	5510	9.20	10.00	No
		118	5580	9.04	10.00	No
		134	5670	9.57	10.00	No
	802.11ac(VHT20)	100	5500	9.55	10.00	No
		116	5580	9.69	10.00	No
		140	5700	9.68	10.00	No
	802.11ac(VHT40)	102	5510	9.43	10.00	No
		118	5580	9.22	10.00	No
		134	5670	9.33	10.00	No
	802.11ac(VHT80)	106	5530	8.99	10.00	No
		122	5610	9.15	10.00	No
	5.8 (5.725~5.850)	802.11a	149	5745	10.00	10.50
157			5785	9.85	10.50	No
165			5825	9.60	10.50	No
802.11n(HT20)		149	5745	9.67	10.00	No
		157	5785	9.52	10.00	No
		165	5825	9.31	10.00	No
802.11n(HT40)		151	5755	9.06	10.00	No
		159	5790	9.95	10.00	No
802.11ac(VHT20)		149	5745	9.52	10.00	No
		157	5785	9.37	10.00	No
		165	5825	9.21	10.00	No
802.11ac(VHT40)		151	5755	9.20	9.50	No
		159	5790	8.75	9.50	No
802.11ac(VHT80)		155	5775	8.65	9.50	No

8.2 Bluetooth

Mode	GFSK			$\pi/4$ -DQPSK		
Channel	0	39	78	0	39	78
Frequency (MHz)	2402	2441	2480	2402	2441	2480
Peak Power (dBm)	15.82	16.09	15.91	15.57	15.89	15.73
tune-up Limit power (dBm)	16.50			16.50		
Mode	8-DPSK			BLE		
Channel	0	39	78	0	19	39
Frequency (MHz)	2402	2441	2480	2402	2440	2480
Peak Power (dBm)	15.75	16.05	15.85	9.95	11.37	11.66
tune-up Limit power (dBm)	16.50			12.00		

9 EUT ANTENNA LOCATION SKETCH



9.1 SAR Test Exclusion Consider Table

According with FCC KDB 447498 D01, Appendix A, <SAR Test Exclusion Thresholds for 100 MHz - 6 GHz and ≤ 50 mm> Table, this Device SAR test configurations consider as following :

Band	Mode	Max. Power		Test Position Configurations				
		dBm	mW	Back	Left Edge	Right Edge	Top Edge	Bottom Edge
WLAN 2.4 G	Distance to User		<5 mm	<5mm	242 mm	64 mm	62 mm	
	802.11b	15.50	35.48	Yes	Yes	No	No	No
	802.11g	14.00	25.12	No	No	No	No	No
	802.11n(HT20)	14.00	25.12	No	No	No	No	No
	802.11n(HT40)	12.00	15.85	No	No	No	No	No
WLAN 5.3 G	Distance to User		<5 mm	<5mm	242 mm	64 mm	62 mm	
	802.11a	10.00	10.00	Yes	Yes	No	No	No
	802.11n(HT20)	10.00	10.00	No	No	No	No	No
	802.11n(HT40)	9.50	8.91	No	No	No	No	No
	802.11ac(VHT20)	9.50	8.91	No	No	No	No	No
	802.11ac(VHT40)	9.00	7.94	No	No	No	No	No
	802.11ac(VHT80)	9.00	7.94	No	No	No	No	No
WLAN 5.6 G	Distance to User		<5 mm	<5mm	242 mm	64 mm	62 mm	
	802.11a	11.00	12.59	Yes	Yes	No	No	No
	802.11n(HT20)	10.00	10.00	No	No	No	No	No
	802.11n(HT40)	10.00	10.00	No	No	No	No	No
	802.11ac(VHT20)	10.00	10.00	No	No	No	No	No
	802.11ac(VHT40)	10.00	10.00	No	No	No	No	No
	802.11ac(VHT80)	10.00	10.00	No	No	No	No	No
WLAN 5.8 G	Distance to User		<5 mm	<5mm	242 mm	64 mm	62 mm	
	802.11a	10.50	11.22	Yes	Yes	No	No	No
	802.11n(HT20)	10.00	10.00	No	No	No	No	No
	802.11n(HT40)	10.00	10.00	No	No	No	No	No
	802.11ac(VHT20)	10.00	10.00	No	No	No	No	No
	802.11ac(VHT40)	9.50	8.91	No	No	No	No	No
	802.11ac(VHT80)	9.50	8.91	No	No	No	No	No
Bluetooth	Distance to User		<5 mm	<5mm	242 mm	64 mm	62 mm	
	Bluetooth BR/EDR	16.50	44.67	Yes	Yes	No	No	No
	Bluetooth BLE	12.00	15.85	No	No	No	No	No

10 TEST RESULTS

10.1 WIFI 2.4GHZ

Mode	Position	Dist. (mm)	Ch.	Freq. (MHz)	Power Drift (%)	1 g Meas. SAR (W/Kg)	Meas. Power (dBm)	Max. tune-up Power (dBm)	Scaling Factor	Duty Cycle (%)	Duty Cycle Scaling Factor	1 g Scaled SAR (W/Kg)	Meas. No.
Body													
802.11 b	Back Side	0	1	2412	0.51	0.816	15.09	15.50	1.099	100	1.000	0.897	/
		0	6	2437	-0.38	0.776	14.83	15.50	1.167	100	1.000	0.905	/
		0	11	2462	-1.82	0.695	13.89	15.50	1.449	100	1.000	1.007	1#
	Left Edge	0	1	2412	-2.41	0.235	15.09	15.50	1.099	100	1.000	0.258	/
Note: Refer to ANNEX C for the detailed test data for each test configuration.													

10.2 WIFI 5GHZ

Fre. Band	Mode	Position	Dist. (mm)	Ch.	Freq. (MHz)	Power Drift (%)	1 g Meas. SAR (W/Kg)	Meas. Power (dBm)	Max. tune-up Power (dBm)	Scaling Factor	Duty Cycle (%)	Duty Cycle Scaling Factor	1 g Scaled SAR (W/Kg)	Meas. No.
Body														
5.3G	802.11 a	Back Side	0	52	5260	-2.58	0.396	9.81	10.00	1.045	100	1.000	0.414	/
		Left Edge	0	52	5260	3.29	0.694	9.81	10.00	1.045	100	1.000	0.725	2#
5.6G	802.11 a	Back Side	0	140	5700	4.21	0.425	10.50	11.00	1.122	100	1.000	0.477	/
		Left Edge	0	140	5700	2.20	0.485	10.50	11.00	1.122	100	1.000	0.544	3#
5.8G	802.11 a	Back Side	0	149	5745	-3.25	0.358	10.00	10.50	1.122	100	1.000	0.402	/
		Left Edge	0	149	5745	-1.52	0.414	10.00	10.50	1.122	100	1.000	0.465	4#

10.3 Bluetooth

Mode	Position	Dist. (mm)	Ch.	Freq. (MHz)	Power Drift (%)	1 g Meas. SAR (W/Kg)	Meas. Power (dBm)	Max. tune-up Power (dBm)	Scaling Factor	1 g Scaled SAR (W/Kg)	Meas. No.
Body											
802.11 b	Back Side	0	39	2441	-3.94	0.837	16.09	16.50	1.099	0.920	5#
		0	0	2402	-2.68	0.783	15.82	16.50	1.169	0.916	/
		0	78	2480	-3.36	0.795	15.91	16.50	1.146	0.911	/
	Left Edge	0	39	2441	-2.14	0.264	16.09	16.50	1.099	0.290	/

11 SAR Measurement Variability

According to KDB 865664 D01, SAR measurement variability was assessed for each frequency band, which is determined by the SAR probe calibration point and tissue-equivalent medium used for the device measurements. When both head and body tissue-equivalent media are required for SAR measurements in a frequency band, the variability measurement procedures should be applied to the tissue medium with the highest measured SAR, using the highest measured SAR configuration for that tissue-equivalent medium. Alternatively, if the highest measured SAR for both head and body tissue-equivalent media are ≤ 1.45 W/kg and the ratio of these highest SAR values, i.e., largest divided by smallest value, is ≤ 1.10 , the highest SAR configuration for either head or body tissue-equivalent medium may be used to perform the repeated measurement. These additional measurements are repeated after the completion of all measurements requiring the same head or body tissue-equivalent medium in a frequency band. The test device should be returned to ambient conditions (normal room temperature) with the battery fully charged before it is re-mounted on the device holder for the repeated measurement(s) to minimize any unexpected variations in the repeated results.

SAR repeated measurement procedure:

1. When the highest measured SAR is < 0.80 W/kg, repeated measurement is not required.
2. When the highest measured SAR is ≥ 0.80 W/kg, repeat that measurement once.
3. If the ratio of largest to smallest SAR for the original and first repeated measurements is > 1.20 , or when the original or repeated measurement is ≥ 1.45 W/kg, perform a second repeated measurement.
4. If the ratio of largest to smallest SAR for the original, first and second repeated measurements is > 1.20 , and the original, first or second repeated measurement is ≥ 1.5 W/kg, perform a third repeated measurement.

Frequency Band (MHz)	Wireless Band	RF Exposure Conditions	Test Position	Highest Measured SAR (W/kg)	Repeated SAR (Yes/No)	Highest Measured SAR (W/kg)	Largest to Smallest SAR Ratio
2400	WIFI 802.11 b	Body	Back Side	0.816	Yes	0.802	1.02
	Bluetooth	Body	Back Side	0.837	Yes	0.813	1.03
Note: The ratio of largest to smallest SAR for the original and first repeated measurements is < 1.20 , the second repeated measurement is not required.							

12 SIMULTANEOUS TRANSMISSION

The product has only one antenna for WALN and Bluetooth, and can't transmit at the same time, so the Simultaneous SAR is not required on this report.

13 TEST EQUIPMENTS LIST

Description	Manufacturer	Model	Serial No.	Cal. Date	Cal. Due
2450MHz Dipole	SATIMO	SID 2450	S/N 11/17 DIP 2G450-452	2017/03/22	2020/03/21
Waveguide	SATIMO	SWG5500	S/N 49/16 DIP WGA42	2017/03/22	2020/03/21
E-Field Probe	MVG	SSE2	S/N 31/17 EPGO 321	2018/03/16	2019/03/15
MultiMeter	Keithley	MultiMeter 2000	4024022	2018/06/15	2019/06/14
Signal Generator	R&S	SMBV100A	260592	2018/06/15	2019/06/14
Power Meter	Agilent	E4419B	GB40201833	2017/11/02	2018/11/01
Power Sensor	Agilent	E9300A	MY41498012	2017/11/02	2018/11/01
Power Sensor	Agilent	E9300A	MY41499891	2017/11/02	2018/11/01
Network Analyzer	Agilent	5071C	MY46103472	2018/03/14	2019/03/13
Thermometer	Elitech	RC-4HC	N/A	2017/11/13	2018/11/12
Dielectric Probe Kit	SATIMO	SCLMP	SN 25/13 OCPG56	N/A	N/A
Antenna	SATIMO	ANTA3	SN 17/13 ZNTA45	N/A	N/A
Phantom1	SATIMO	SAM	SN 30/13 SAM103	N/A	N/A
Phantom2	SATIMO	SAM	SN 30/13 SAM104	N/A	N/A
Power Amplifier	SATIMO	6552B	22374	N/A	N/A
Attenuator	COM-MW	ZA-S1-31	1305003187	N/A	N/A
Directional coupler	AA-MCS	AAMCS-UDC	000272	N/A	N/A

Note: Per KDB 865664 Dipole SAR Validation Verification, BALUN LAB has adopted 3 years calibration intervals. On annual basis, every measurement dipole has been evaluated and is in compliance with the following criteria:

1. There is no physical damage on the dipole;
2. System validation with specific dipole is within 10% of calibrated value;
3. Return-loss is within 20% of calibrated measurement.
4. Impedance (real or imaginary parts) is within 5 Ohms of calibrated measurement.

ANNEX A SIMULATING LIQUID VERIFICATION RESULT

The dielectric parameters of the liquids were verified prior to the SAR evaluation using an SCLMP Dielectric Probe Kit.

Date	Liquid Type	Fre. (MHz)	Temp. (°C)	Meas. Conductivity (σ) (S/m)	Meas. Permittivity (ϵ)	Target Conductivity (σ) (S/m)	Target Permittivity (ϵ)	Conductivity Tolerance (%)	Permittivity Tolerance (%)
2018.08.20	Body	2450	20.1	1.94	52.56	1.95	52.70	-0.51	-0.27
2018.08.21	Body	5200	20.3	5.36	48.97	5.30	49.01	1.13	-0.08
2018.08.22	Body	5600	20.1	5.81	47.48	5.77	48.47	0.69	-2.04
2018.08.22	Body	5800	20.1	6.01	46.28	6.00	48.20	0.17	-3.98

Note: The tolerance limit of Conductivity and Permittivity is $\pm 5\%$.

ANNEX B SYSTEM CHECK RESULT

Comparing to the original SAR value provided by SATIMO, the validation data should be within its specification of 10%(for 1 g).

Date	Liquid Type	Freq. (MHz)	Power (mW)	Measured SAR (W/kg)	Normalized SAR (W/kg)	Dipole SAR (W/kg)	Tolerance (%)	Targeted SAR(W/kg)	Tolerance (%)
2018.08.20	Body	2450	100	5.558	55.58	53.67	3.56	52.40	6.07
2018.08.21	Body	5200	100	16.151	161.51	158.91	1.64	159.00	1.58
2018.08.22	Body	5600	100	17.240	172.40	170.90	0.88	173.80	-0.81
2018.08.22	Body	5800	100	17.580	175.80	177.09	-0.73	181.20	-2.98

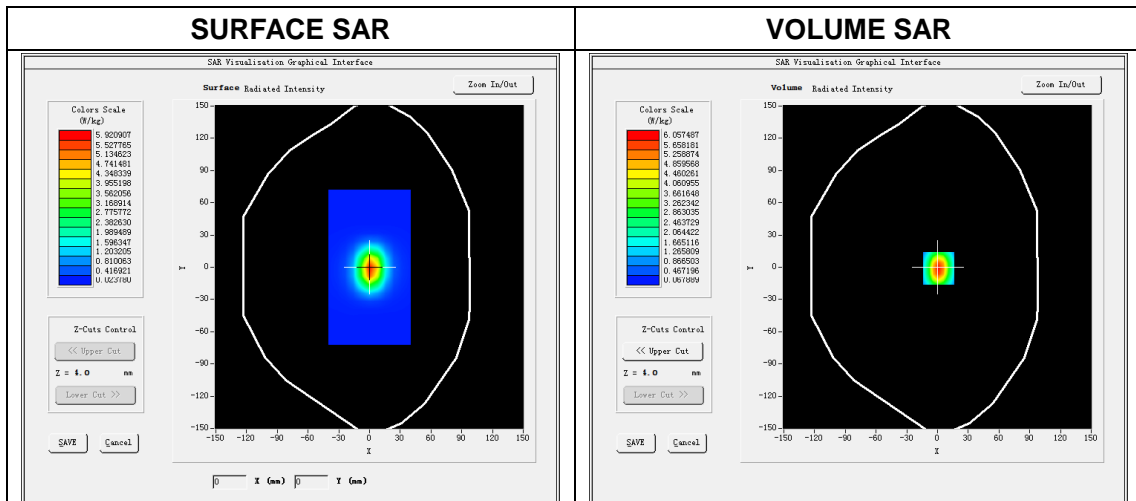
Note: The tolerance limit of System validation $\pm 10\%$.

System Performance Check Data(2450MHz Body)

Type: Phone measurement (Complete)
 E-Field Probe: SN 3117 EPGO321
 Area scan resolution: dx=8mm,dy=8mm
 Zoom scan resolution: dx=5mm, dy=5mm, dz=5mm
 Date of measurement: 2018.08.20
 Measurement duration: 18 minutes 47 seconds

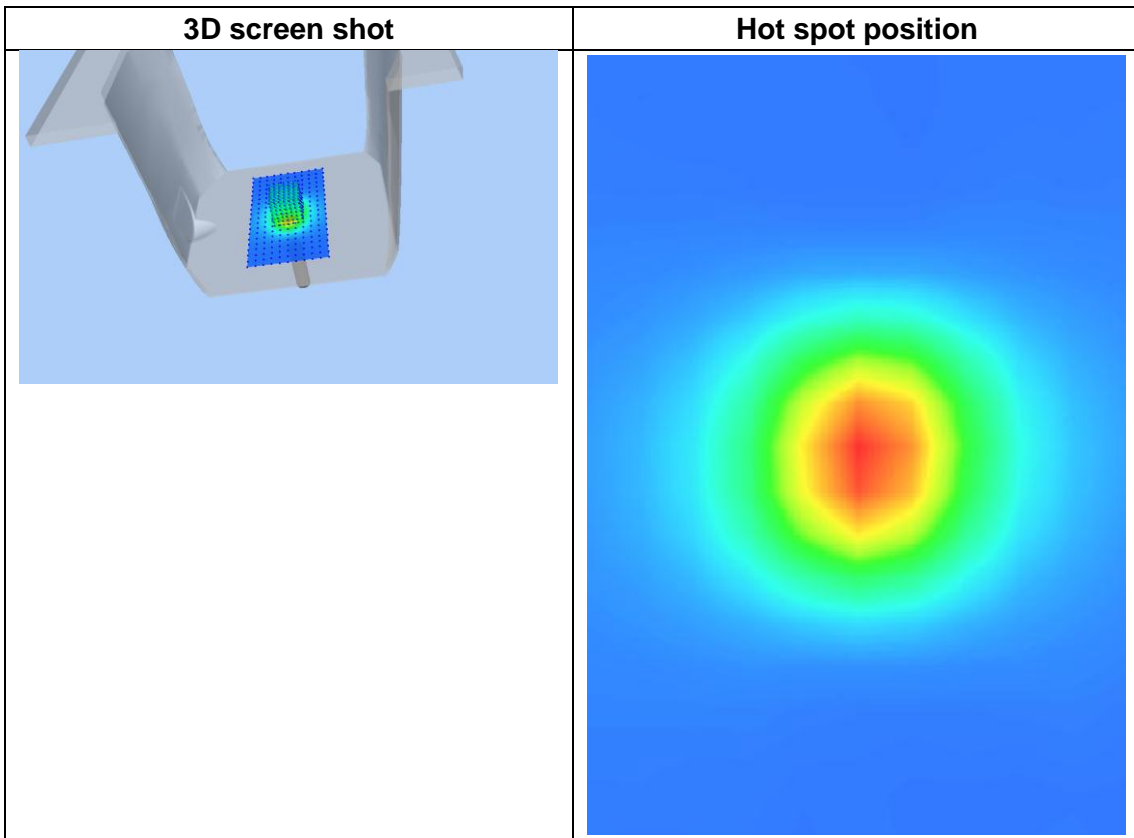
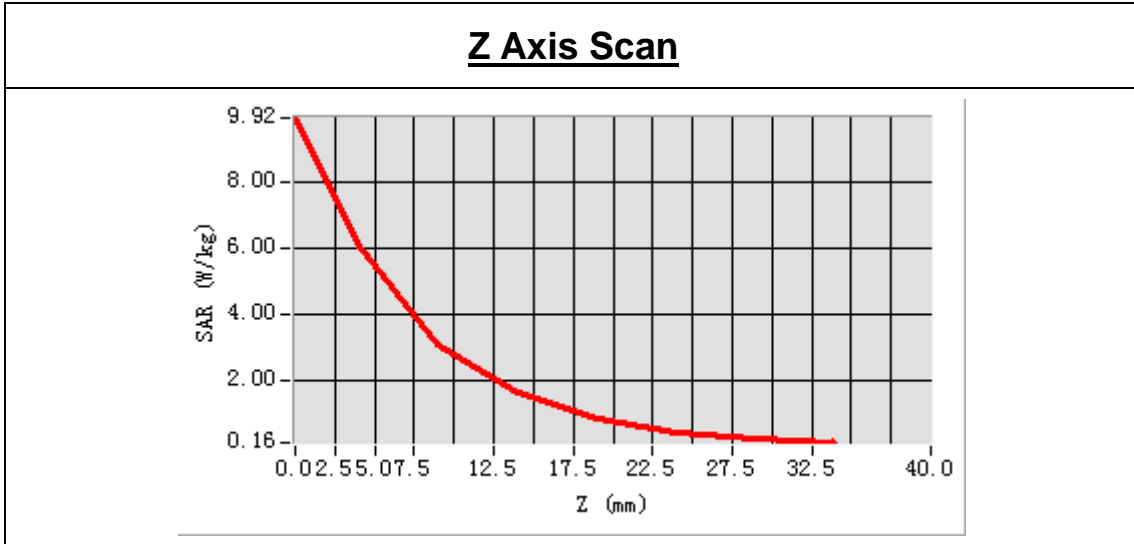
Experimental conditions.

Phantom File	surf_sam_plan.txt
Phantom	Validation plane
Band	2450MHz
Signal	CW
Frequency (MHz)	2450.000000
Relative permittivity (real part)	52.560124
Conductivity (S/m)	1.938245
Power drift (%)	-0.150000
Ambient Temperature:	21.8°C
Liquid Temperature:	20.1°C
ConvF:	2.41
Crest factor:	1:1



Maximum location: X=1.00, Y=-1.00
 SAR Peak: 9.82W/kg

SAR 10g (W/Kg)	2.591581
SAR 1g (W/Kg)	5.557807

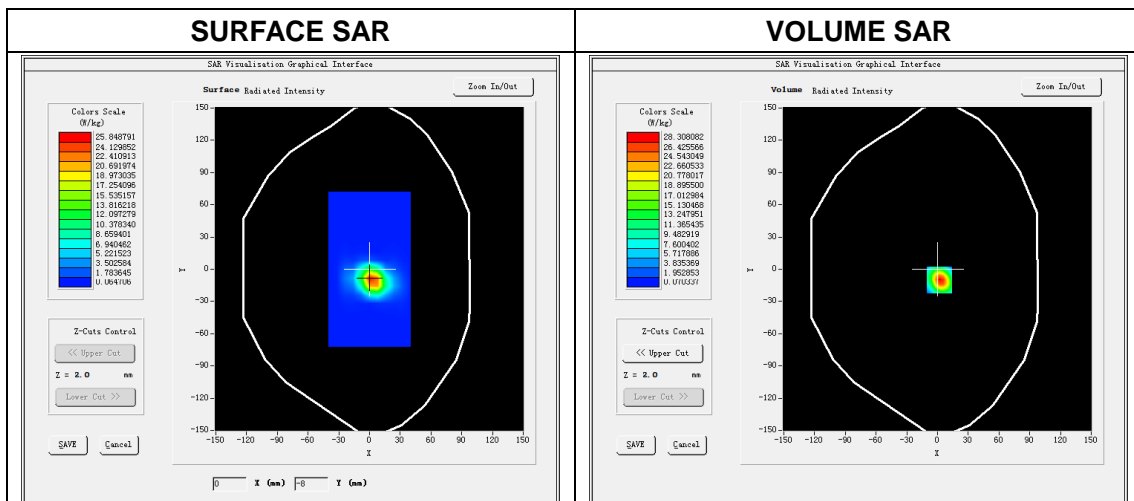


System Performance Check Data(5200 MHz Body)

Type: Phone measurement (Complete)
 E-Field Probe: SN 3117 EPGO321
 Area scan resolution: dx=8 mm,dy=8 mm
 Zoom scan resolution: dx=4 mm, dy=4 mm, dz=2 mm
 Date of measurement: 2018.08.21
 Measurement duration: 29 minutes 18 seconds

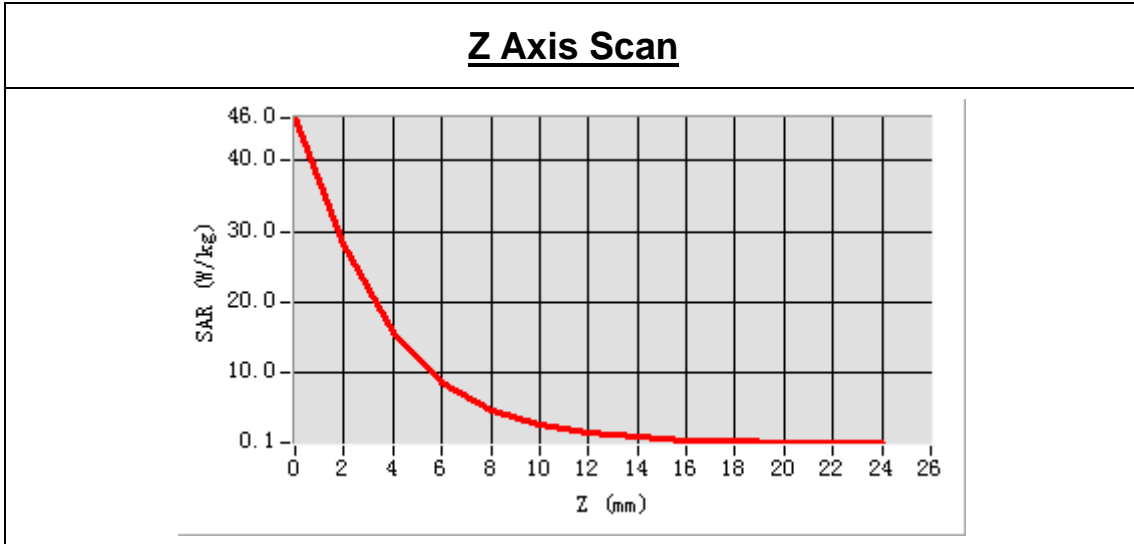
Experimental conditions.

Phantom File	surf_sam_plan.txt
Phantom	Validation plane
Band	5200 MHz
Signal	CW
Frequency (MHz)	5200.000000
Relative permittivity (real part)	48.970343
Conductivity (S/m)	5.358484
Power drift (%)	-0.410000
Ambient Temperature:	21.5°C
Liquid Temperature:	20.3°C
ConvF:	2.26
Crest factor:	1:1



Maximum location: X=0.00, Y=-8.00
SAR Peak: 45.83 W/kg

SAR 10 g (W/Kg)	5.512234
SAR 1 g (W/Kg)	16.150859



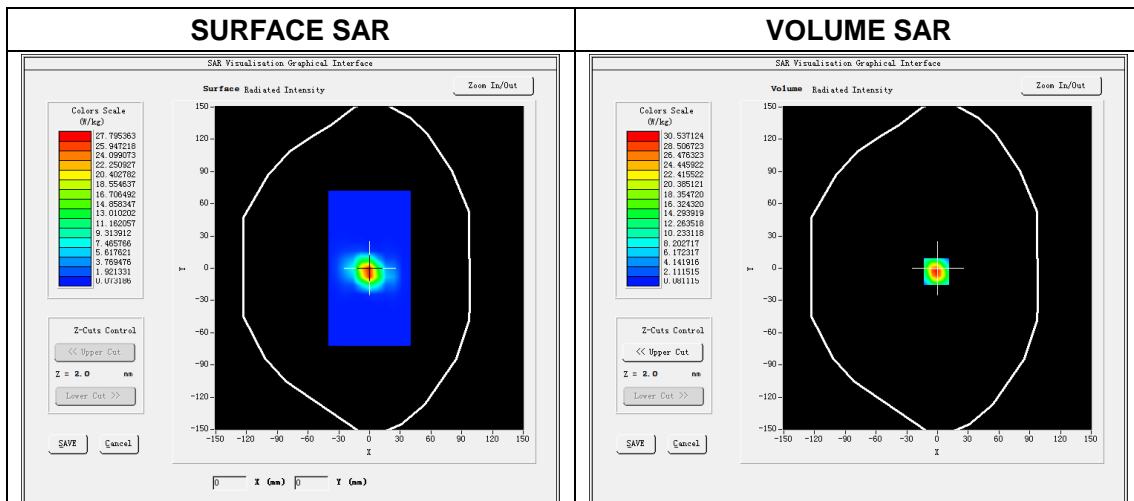
<h4 style="text-align: center;">3D screen shot</h4>	<h4 style="text-align: center;">Hot spot position</h4>
---	--

System Performance Check Data(5600 MHz Body)

Type: Phone measurement (Complete)
 E-Field Probe: SN 3117 EPGO321
 Area scan resolution: dx=8 mm,dy=8 mm
 Zoom scan resolution: dx=4 mm, dy=4 mm, dz=2 mm
 Date of measurement: 2018.08.22
 Measurement duration: 27 minutes 28 seconds

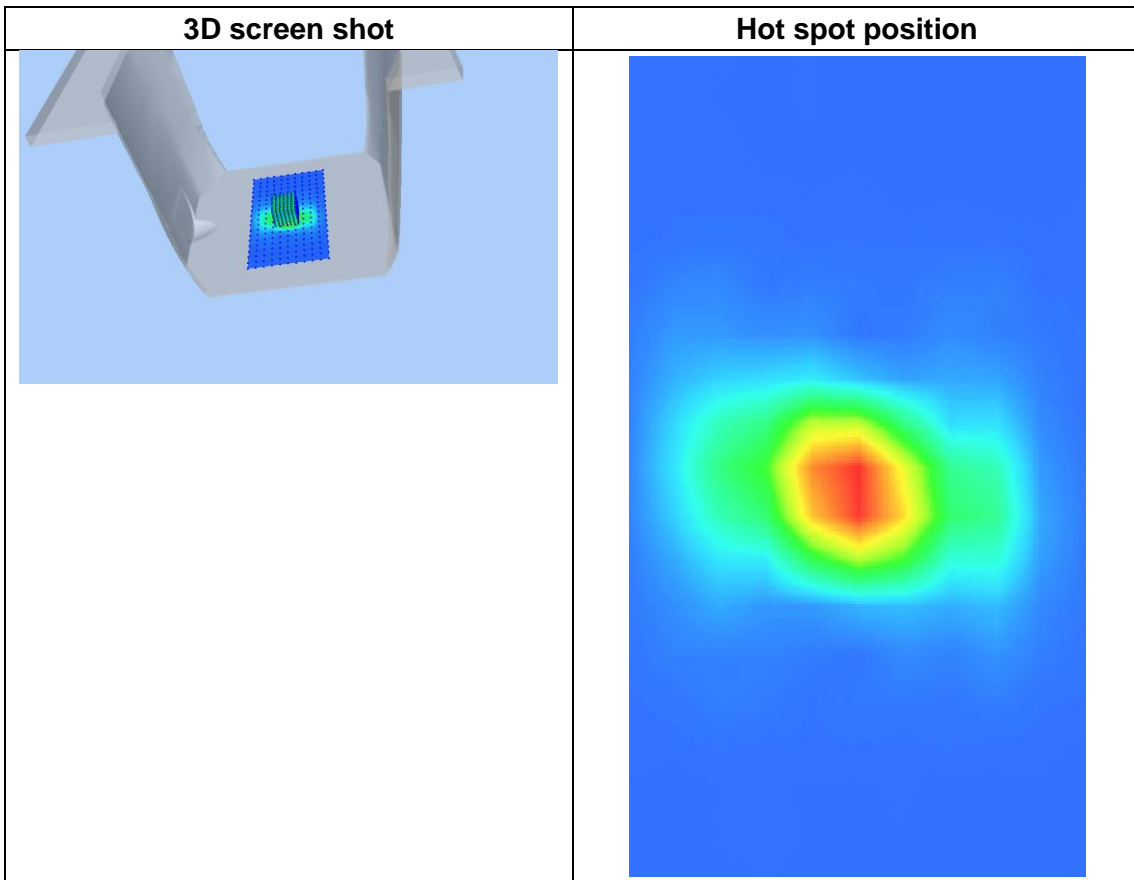
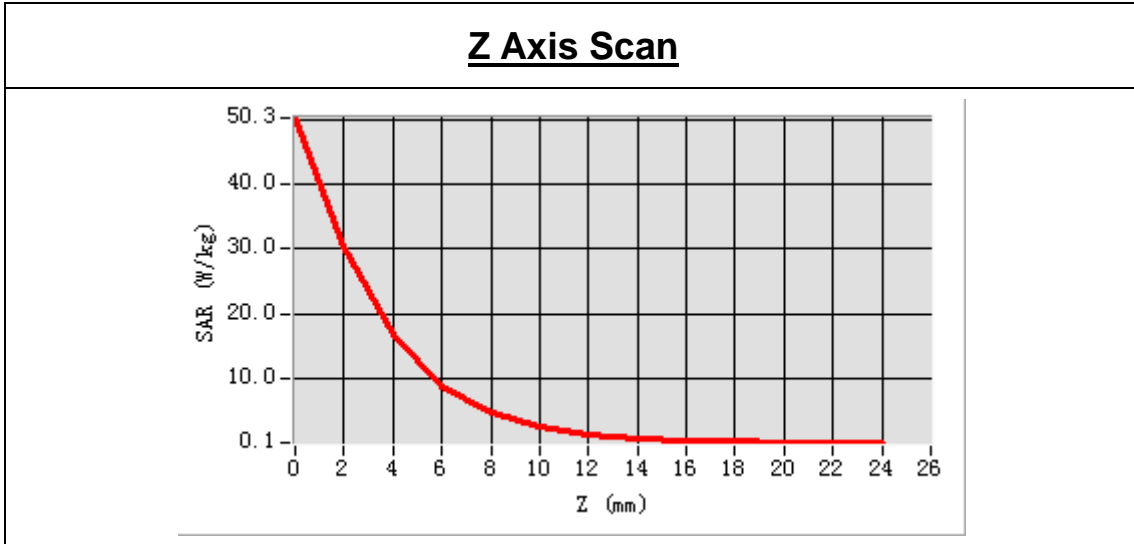
Experimental conditions.

Phantom File	surf_sam_plan.txt
Phantom	Validation plane
Band	5600 MHz
Signal	CW
Frequency (MHz)	5600.000000
Relative permittivity (real part)	47.484594
Conductivity (S/m)	5.805103
Power drift (%)	0.390000
Ambient Temperature:	22.4°C
Liquid Temperature:	20.1°C
ConvF:	2.35
Crest factor:	1:1



Maximum location: X=0.00, Y=0.00
 SAR Peak: 52.24 W/kg

SAR 10 g (W/Kg)	5.844205
SAR 1 g (W/Kg)	17.239801

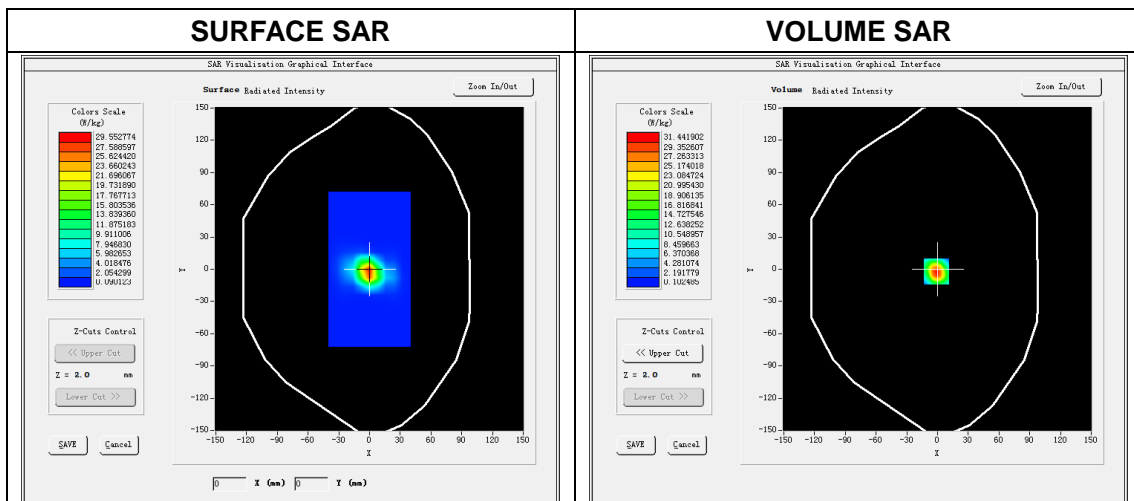


System Performance Check Data(5800 MHz Body)

Type: Phone measurement (Complete)
 E-Field Probe: SN 3117 EPGO321
 Area scan resolution: dx=8 mm,dy=8 mm
 Zoom scan resolution: dx=4 mm, dy=4 mm, dz=2 mm
 Date of measurement: 2018.08.22
 Measurement duration: 27 minutes 33 seconds

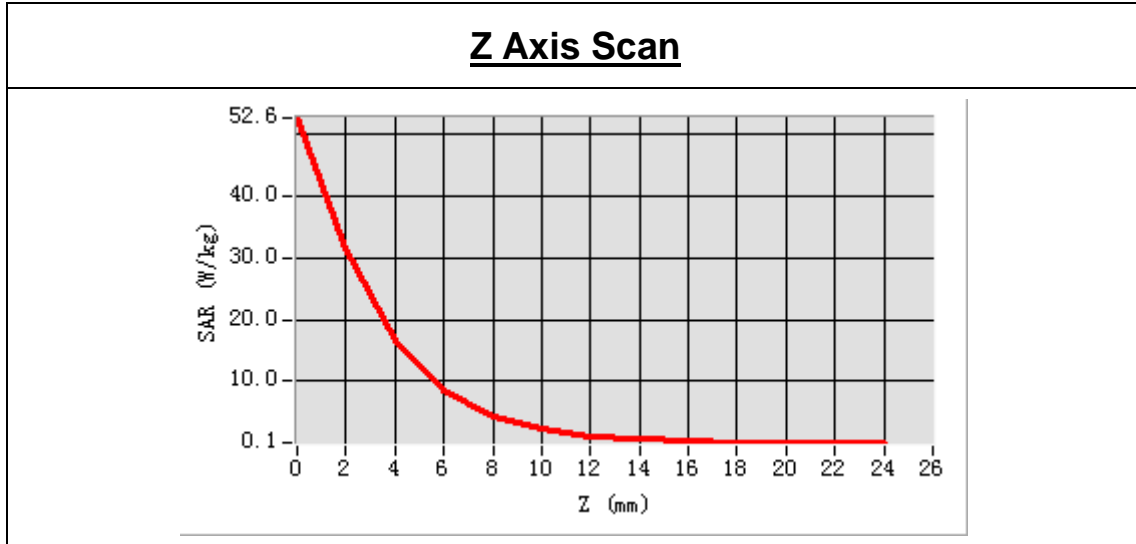
Experimental conditions.

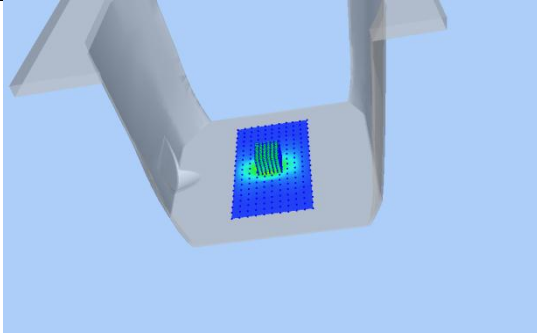
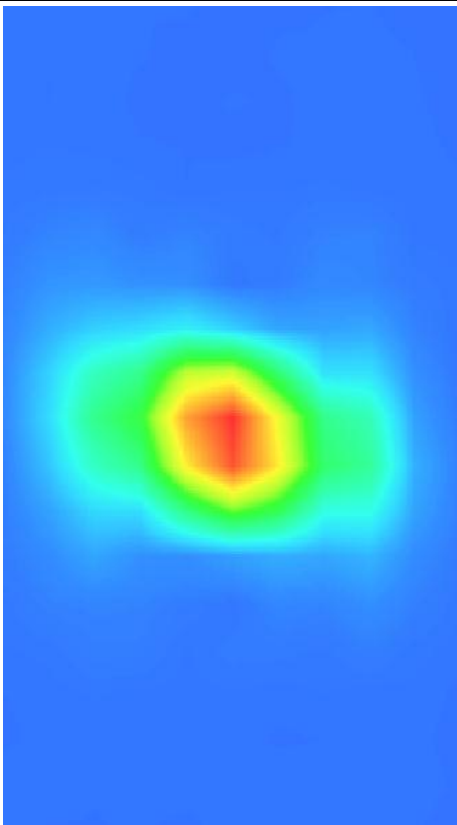
Phantom File	surf_sam_plan.txt
Phantom	Validation plane
Band	5800 MHz
Signal	CW
Frequency (MHz)	5800.000000
Relative permittivity (real part)	46.279083
Conductivity (S/m)	6.012611
Power drift (%)	0.110000
Ambient Temperature:	22.4°C
Liquid Temperature:	20.1°C
ConvF:	2.39
Crest factor:	1:1



Maximum location: X=0.00, Y=0.00
SAR Peak: 55.01 W/kg

SAR 10 g (W/Kg)	5.882889
SAR 1 g (W/Kg)	17.580306



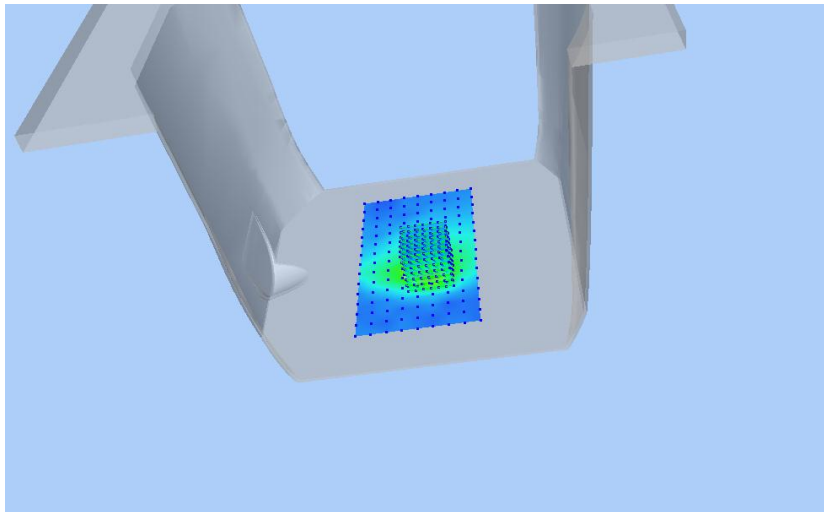
3D screen shot	Hot spot position
	

ANNEX C TEST DATA

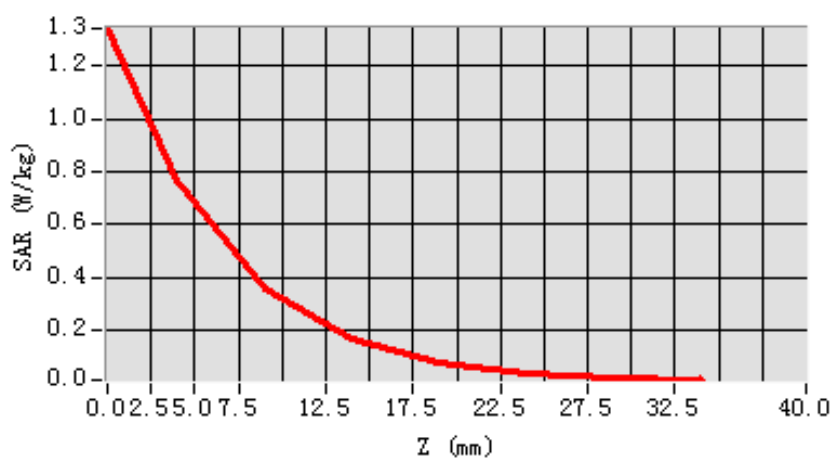
MEAS. 1 Body Plane with Back Side 0 mm on High Channel in IEEE 802.b

mode

Test Date: 20/8/2018
Measurement duration: 18 minutes 30 seconds
Signal: WLAN, f=2462.0 MHz, Duty Cycle: 1:1.0
Liquid Parameters: Permittivity: 52.45; Conductivity: 1.96 S/m
Test condition: Ambient Temperature: 21.8°C, Liquid Temperature: 20.1°C
Probe: SN 3117 EPGO321, ConvF: 2.41
Area Scan: sam_direct_droit2_surf10mm.txt, h= 5.00 mm
Zoom Scan: 7x7x7,dx=5mm, dy=5mm, dz=5mm,Complete
Maximum location: X=10.000000, Y=-22.000000
SAR 10g (W/Kg): 0.289154
SAR 1g (W/Kg): 0.694677
Power drift (%): -1.82
3D screen shot

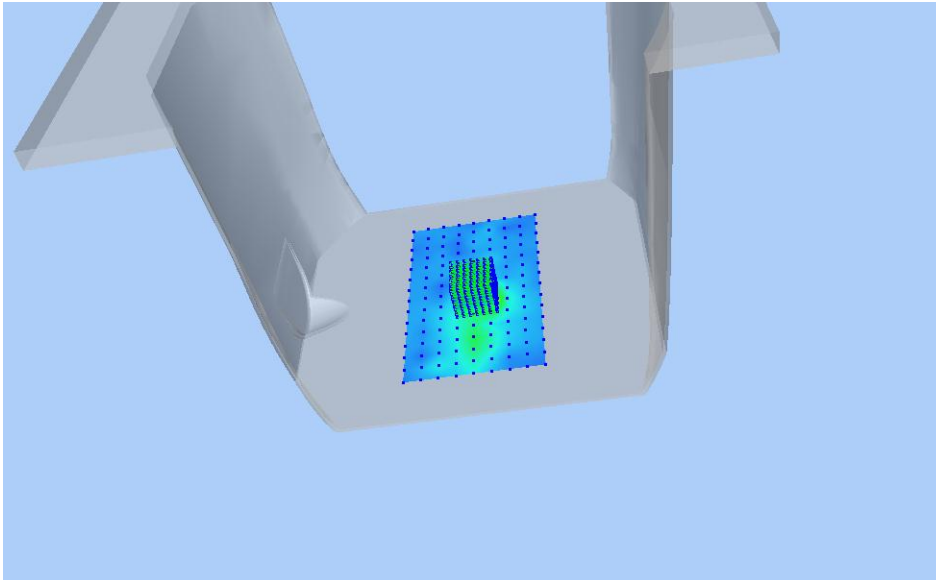


Z Axis Scan

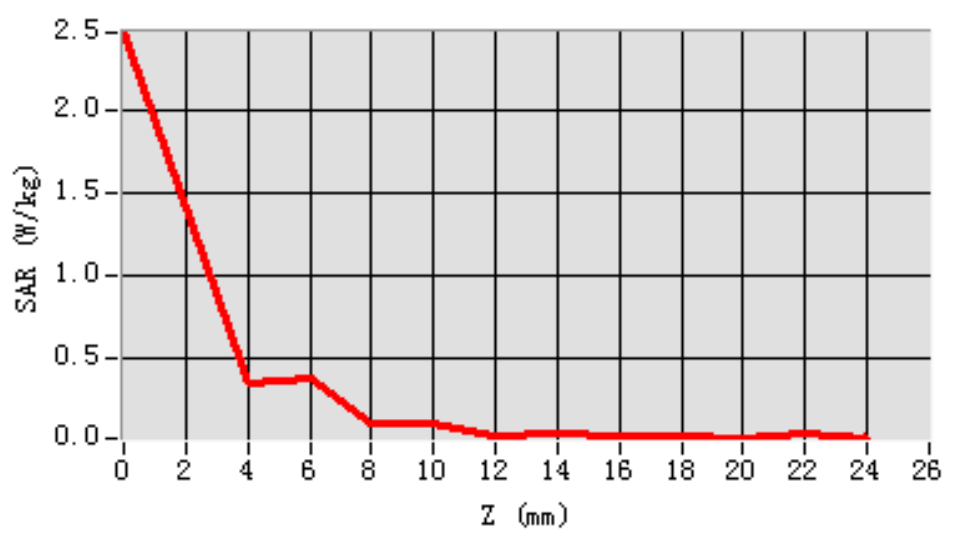


MEAS. 2 Body Plane with Left Edge 0 mm on 52 Channel in IEEE 802.a mode

Test Date: 21/8/2018
Measurement duration: 27 minutes 26 seconds
Signal: WLAN, f=5260.0 MHz, Duty Cycle: 1:1.0
Liquid Parameters: Permittivity: 48.73; Conductivity: 5.46 S/m
Test condition: Ambient Temperature: 21.5°C, Liquid Temperature: 20.3°C
Probe: SN 3117 EPGO321, ConvF: 2.26
Area Scan: sam_direct_droit2_surf10mm.txt, h= 5.00 mm
Zoom Scan: 7x7x12,dx=4mm, dy=4mm, dz=2mm,Complete
Maximum location: X=0.000000, Y=-12.000000
SAR 10g (W/Kg): 0.166462
SAR 1g (W/Kg): 0.693844
Power drift (%): 3.29
3D screen shot

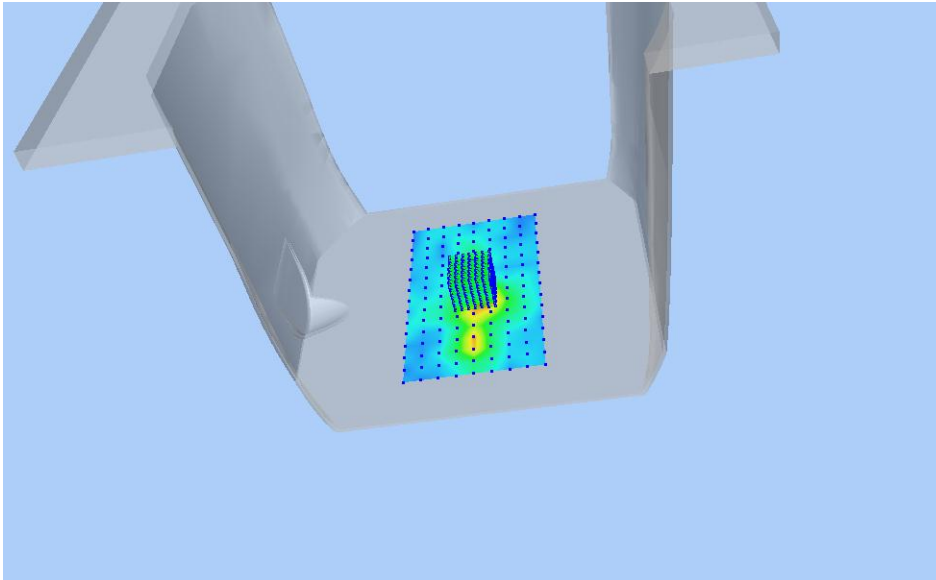


Z Axis Scan

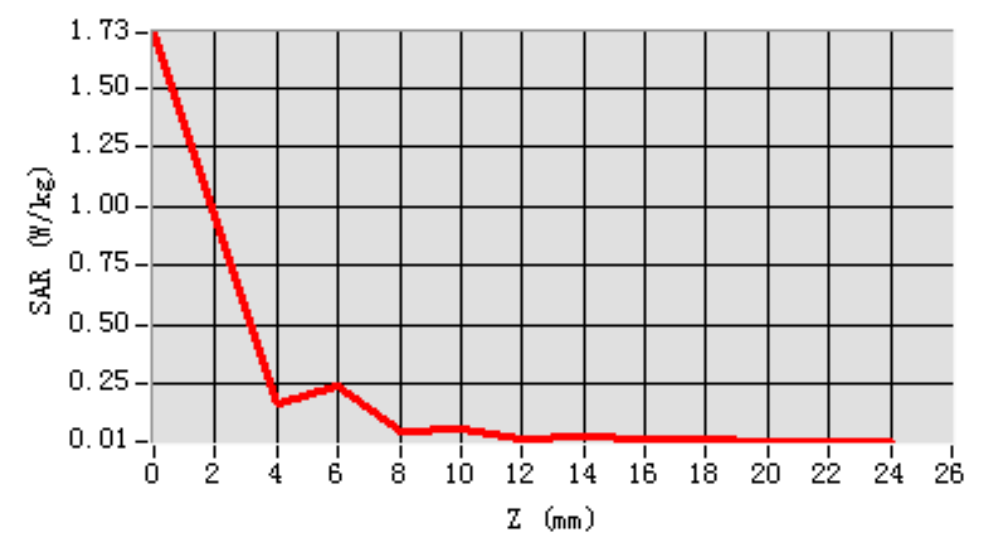


MEAS. 3 Body Plane with Left Edge 0 mm on 140 Channel in IEEE 802.a mode

Test Date: 22/8/2018
Measurement duration: 26 minutes 52 seconds
Signal: WLAN, f=5700.0 MHz, Duty Cycle: 1:1.0
Liquid Parameters: Permittivity: 47.12; Conductivity: 5.91 S/m
Test condition: Ambient Temperature: 22.4°C, Liquid Temperature: 20.1°C
Probe: SN 3117 EPGO321, ConvF: 2.35
Area Scan: sam_direct_droit2_surf10mm.txt, h= 5.00 mm
Zoom Scan: 7x7x12,dx=4mm, dy=4mm, dz=2mm,Complete
Maximum location: X=0.000000, Y=-2.000000
SAR 10g (W/Kg): 0.138505
SAR 1g (W/Kg): 0.484500
Power drift (%): 2.20
3D screen shot

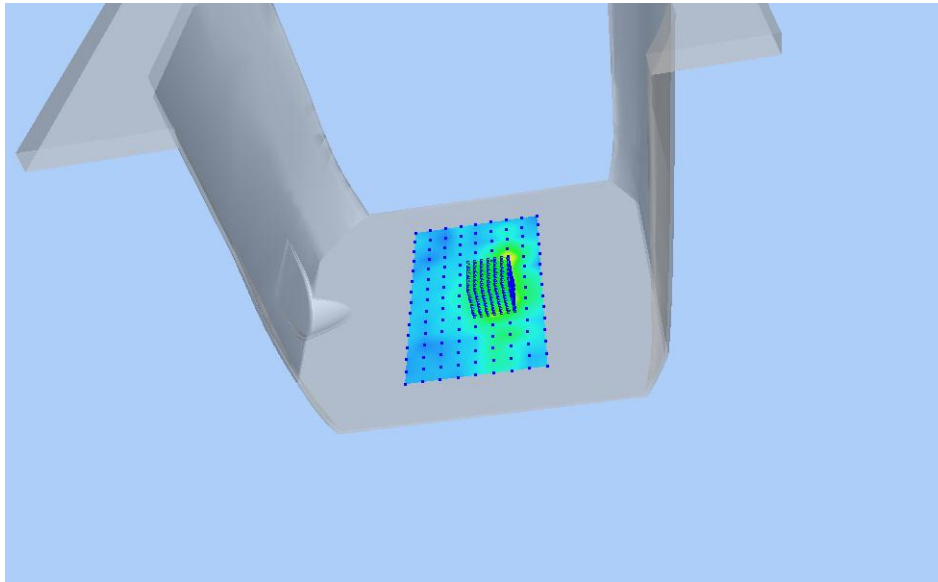


Z Axis Scan

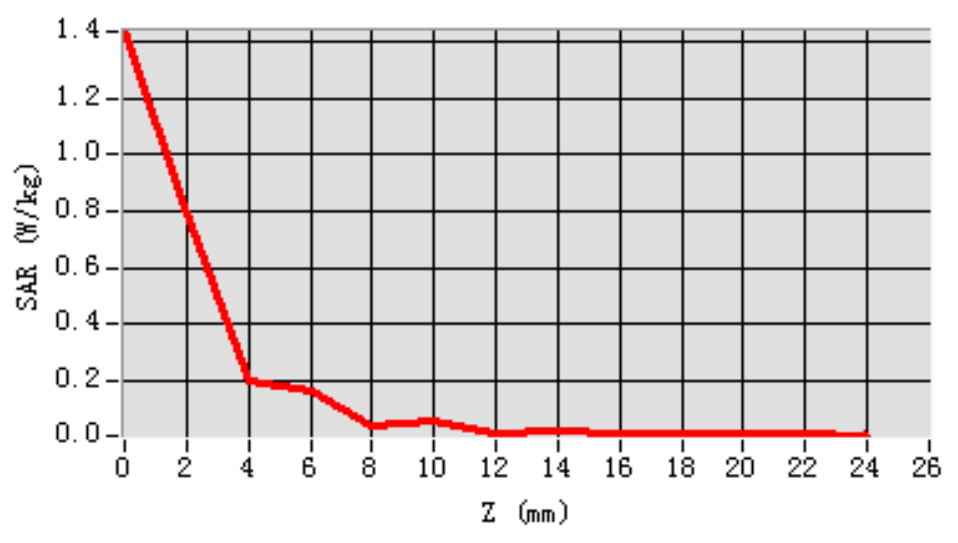


MEAS. 4 Body Plane with Left Edge 0 mm on 149 Channel in IEEE 802.a mode

Test Date: 22/8/2018
Measurement duration: 29 minutes 40 seconds
Signal: WLAN, f=5745.0 MHz, Duty Cycle: 1:1.0
Liquid Parameters: Permittivity: 46.79; Conductivity: 5.97 S/m
Test condition: Ambient Temperature: 22.4°C, Liquid Temperature: 20.1°C
Probe: SN 3117 EPGO321, ConvF: 2.39
Area Scan: sam_direct_droit2_surf10mm.txt, h= 5.00 mm
Zoom Scan: 7x7x12,dx=4mm, dy=4mm, dz=2mm,Complete
Maximum location: X=10.000000, Y=-12.000000
SAR 10g (W/Kg): 0.125291
SAR 1g (W/Kg): 0.413604
Power drift (%): -1.52
3D screen shot



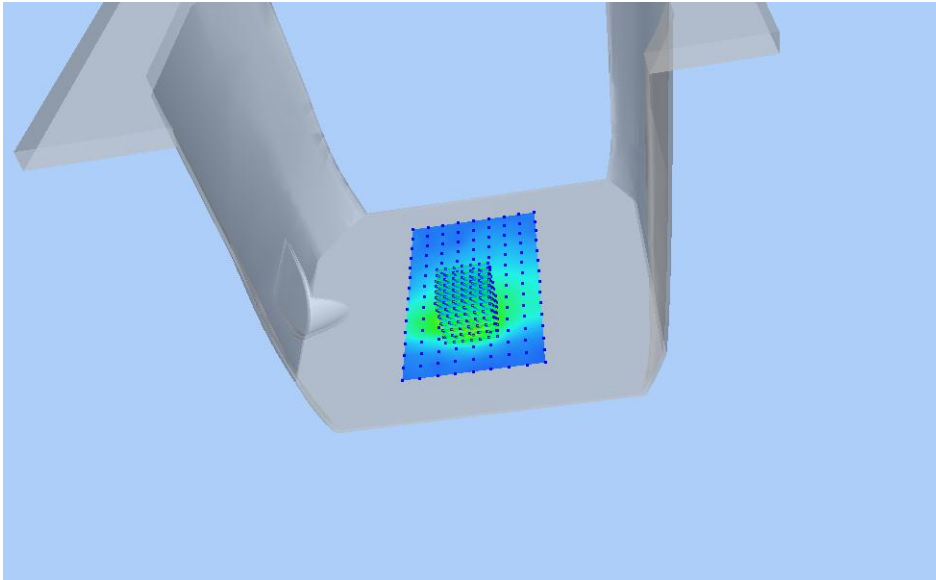
Z Axis Scan



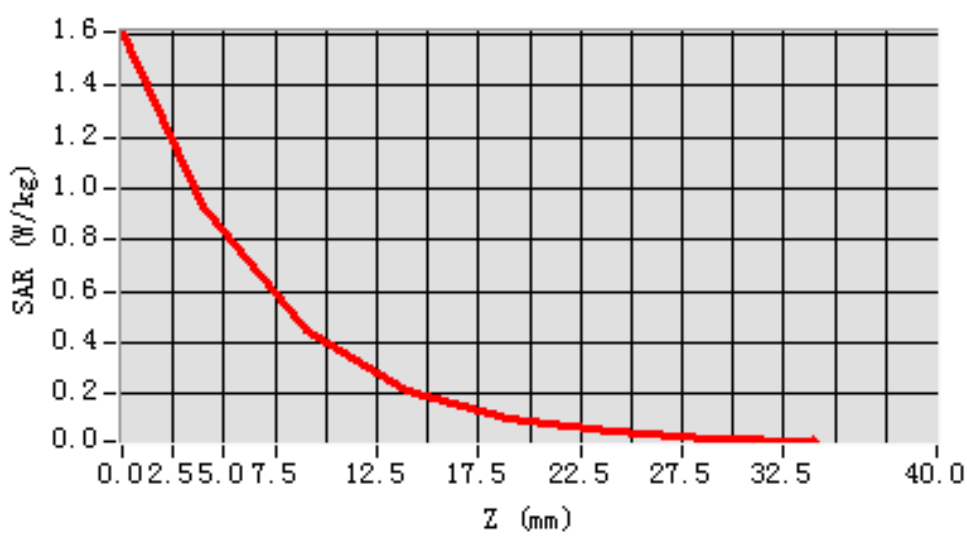
MEAS. 5 Body Plane with Back Side 0 mm on Middle Channel in Bluetooth

DH5 mode

Test Date: 20/8/2018
Measurement duration: 15 minutes 57 seconds
Signal: Bluetooth, f=2441.0 MHz, Duty Cycle: 1:1.3
Liquid Parameters: Permittivity: 51.62; Conductivity: 1.93 S/m
Test condition: Ambient Temperature: 21.8°C, Liquid Temperature: 20.1°C
Probe: SN 3117 EPGO321, ConvF: 2.41
Area Scan: sam_direct_droit2_surf10mm.txt, h= 5.00 mm
Zoom Scan: 7x7x7,dx=5mm, dy=5mm, dz=5mm,Complete
Maximum location: X=0.000000, Y=-32.000000
SAR 10g (W/Kg): 0.357423
SAR 1g (W/Kg): 0.836663
Power drift (%): -3.94
3D screen shot



Z Axis Scan



ANNEX D EUT EXTERNAL PHOTOS

Please refer the document "BL-SZ1880007-AW.pdf".

ANNEX E SAR TEST SETUP PHOTOS

Please refer the document "BL-SZ1880007-AS.pdf".

ANNEX F CALIBRATION REPORT

Please refer the document "CALIBRATION REPORT.pdf".

--END OF REPORT--