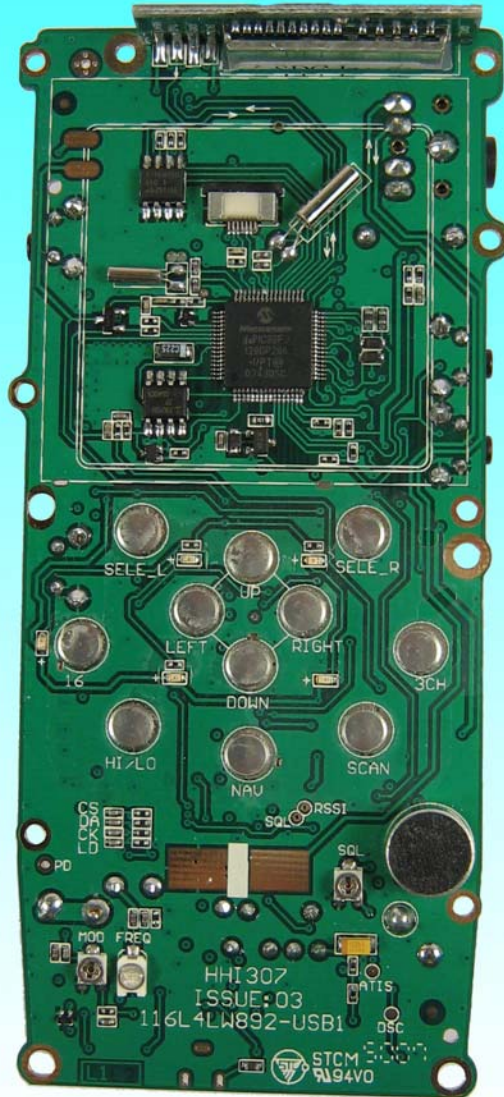


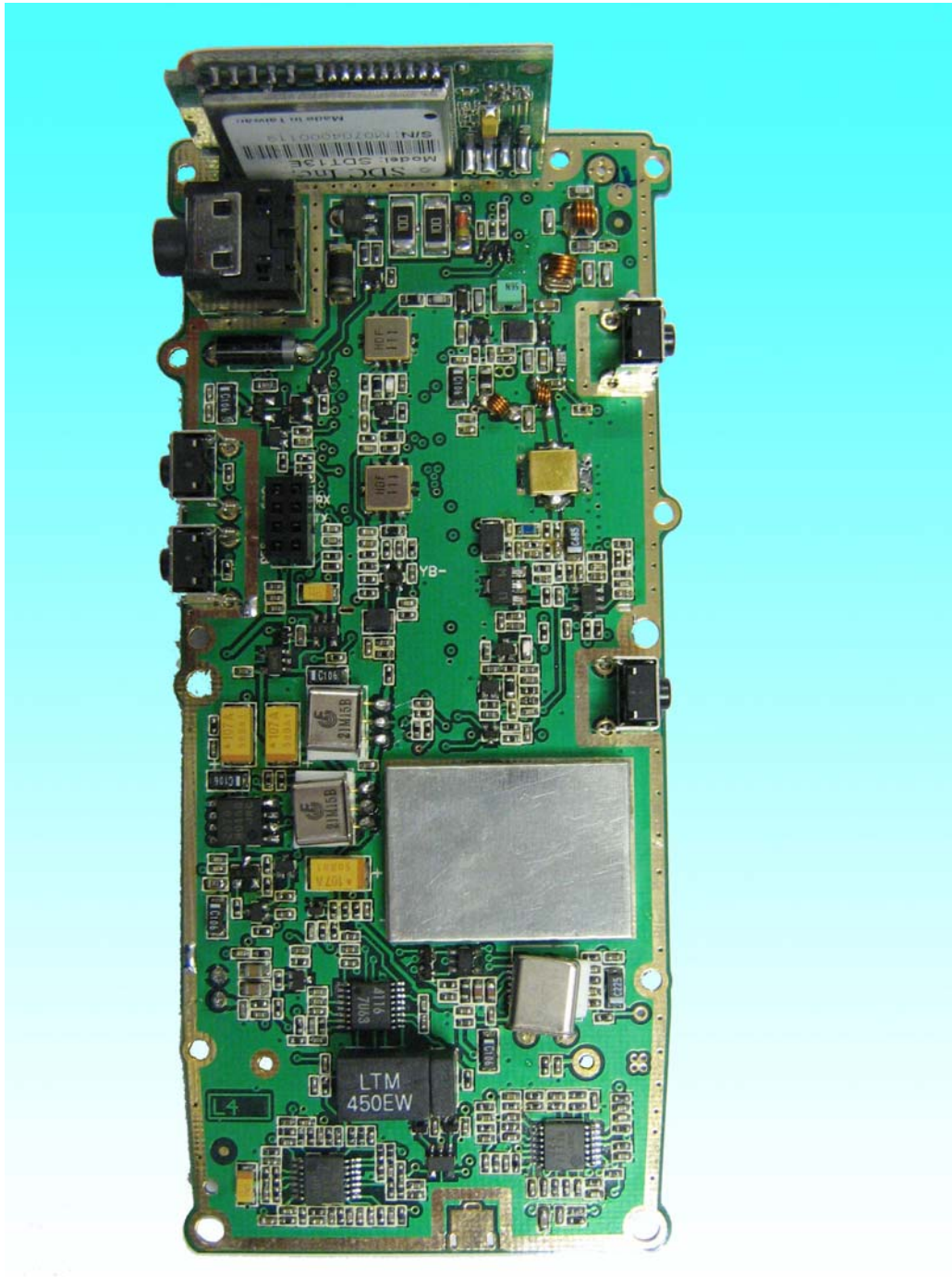
Main Board Top View 1



Main Board Top View 2



Main Board Bottom View with Metal Shield Cover





A detailed view of the internal circuit board of a mobile phone. The board is green and populated with numerous electronic components, including integrated circuits, capacitors, resistors, and connectors. A large black chip is labeled 'LTM 450FW'. Other visible components include a silver heat sink, a black rectangular component, and various smaller surface-mount components. The board is mounted on a metal frame with several screws visible.

