

TEST REPORT

Equipment Under Test : OfficeConnect Wireless 11g USB Adapter
Model No. : 3CRWE254G72
FCC ID : RAXWN4501CARC
Applicant : Arcadyan Technology Corporation
Address of Applicant : 4F, No. 9, Park Avenue II, Science-based Industrial Park,
Hsinchu 300, Taiwan, R.O.C.
Date of Receipt : 2003.10.03
Date of Test(s) : 2003.10.09 & 2003.10.13
Date of Issue : 2003.12.09

Standards:

**FCC OET Bulletin 65 supplement C,
ANSI/IEEE C95.1 , C95.3**

In the configuration tested, the EUT complied with the standards specified above.

Remarks:

This report details the results of the testing carried out on one sample, the results contained in this test report do not relate to other samples of the same product. The manufacturer should ensure that all products in series production are in conformity with the product sample detailed in this report.

This report may only be reproduced and distributed in full. If the product in this report is used in any configuration other than that detailed in the report, the manufacturer must ensure the new system complies with all relevant standards. Any mention of SGS Taiwan E&E Services or testing done by SGS Taiwan E&E Services in connection with distribution or use of the product described in this report must be approved by SGS Taiwan E&E Services in writing.

Tested by : Dikin Yang **Date** : 2003.10.15

Approved by : Robert Chang **Date** : 2003.12.09

Contents

1. General Information	
1.1 Testing Laboratory.....	4
1.2 Details of Applicant.....	4
1.3 Description of EUT(s).....	4
1.4 Test Environment.....	5
1.5 Operation Configuration.....	5
1.6 The SAR Measurement System.....	5
1.7 System Components.....	7
1.8 SAR System Verification.....	8
1.9 Tissue Simulant Fluid for the Frequency Band 2.4 to 2.5 GHz.....	9
1.10 Operation Procedure.....	10
1.11 Test Standards and Limits.....	11
2. Summary of Results	13
3. Instruments List	15
4. Measurements	16
4.1 802.11 b mode	
(the antenna is in horizontal direction)	
4.1.1 Edge-on position, lowest channel.....	16
4.1.2 Edge-on position, middle channel.....	17
4.1.3 Edge-on position, highest channel.....	18
(the antenna tip upward)	
4.1.4 Edge-on position, lowest channel.....	19
4.1.5 Edge-on position, middle channel.....	20
4.1.6 Edge-on position, highest channel.....	21
(the antenna tip downward)	
4.1.7 End-on position, lowest channel.....	22
4.1.8 End-on position, middle channel.....	23
4.1.9 End-on position, highest channel.....	24
(the antenna is in horizontal direction)	
4.1.10 End-on position, lowest channel.....	25
4.1.11 End-on position, middle channel.....	26
4.1.12 End-on position, highest channel.....	27
4.2 802.11 g mode	
(the antenna is in horizontal direction)	
4.2.1 Edge-on position, lowest channel.....	28
4.2.2 Edge-on position, middle channel.....	29
4.2.3 Edge-on position, highest channel.....	30

(the antenna tip upward)	
4.2.4 Edge-on position, lowest channel.....	31
4.2.5 Edge-on position, middle channel.....	32
4.2.6 Edge-on position, highest channel.....	33
(the antenna tip downward)	
4.2.7 End-on position, lowest channel.....	34
4.2.8 End-on position, middle channel.....	35
4.2.9 End-on position, highest channel.....	36
(the antenna is in horizontal direction)	
4.2.10 End-on position, lowest channel.....	37
4.2.11 End-on position, middle channel.....	38
4.2.12 End-on position, highest channel.....	39
4.3 System Performance Validation	40

APPENDIX

1. Photographs of Test Setup.....	41
2. Photographs of EUT.....	46
3. Probe Calibration certificate.....	49
4. Uncertainty Analysis.....	53
5. Phantom description.....	54
6. System Validation from Original equipment supplier.....	55

1. General Information

1.1 Testing Laboratory

SGS Taiwan Ltd. (FCC Registration number: 573967)
 1F, No. 134, Wukung Road, Wuku industrial zone
 Taipei county , Taiwan , R.O.C.
 Telephone : +886-2-2299-3279
 Fax : +886-2-2298-2698
 Internet : <http://www.sgs.com.tw>

1.2 Details of Applicant

Applicant : Arcadyan Technology Corporation
 Address : 4F, No. 9, Park Avenue II, Science-based
 Industrial Park, Hsinchu 300, Taiwan, R.O.C.
 Product Name : OfficeConnect Wireless 11g USB Adapter
 Model Name : 3CRWE254G72

1.3 Description of EUT(s)

Equipment Type	OfficeConnect Wireless 11g USB Adapter	
Test Procedure	FCC OET Bulletin 65, Supplement C	
TX Frequency range	2412-2462 MHz	
FCC ID	RAXWN4501CARC	
Model(s)	3CRWE254G72	
RF Conducted Output Power	802.11b Mode	802.11g Mode

	19.13 dBm(2412MHz)	18.16 dBm (2412MHz)
	19.10 dBm(2437MHz)	18.14 dBm (2437MHz)
	19.04 dBm(2462MHz)	18.07 dBm (2462MHz)
Serial No.	Pre-Production	
Antenna Type	CHIP Antenna	
Max. SAR Measured	0.0696 W/kg	
Battery Type(s)	From USB Host Laptop PC	
Host Laptop PC(s) Tested	IBM ThinkPad T30 (S/N: 99AMZM5)	

1.4 Test Environment

Ambient temperature : 22.6° C

Tissue Simulating Liquid : 22° C

Relative Humidity : 62 %

1.5 Operation Configuration

Configuration 1: "Edge-on" placement ; edge of the PC at 90° and at a distance of 1.5 cm from the base of the phantom and the antenna is in horizontal direction.(Fig.2 & Fig.3)

Configuration 2: "Edge-on" placement ; edge of the PC at 90° and at a distance of 1.5 cm from the base of the phantom, and the antenna tip upward.(Fig.4 & Fig.5)

Configuration 3: "End-on" placement; Bottom of the Pc is paralleled and at a distance of 0.0 cm from the base of the phantom, but 0.6 cm Spacing between EUT & Planar Phantom and the EUT antenna is in horizontal direction. (Fig.6 & Fig.7)

Configuration 4: "End-on" placement; Bottom of the Pc is paralleled and at a distance of 0.0 cm from the base of the phantom, but 0.6 cm Spacing between EUT & Planar Phantom and the EUT antenna tip downward. (Fig.8 & Fig.9)

1.6 The SAR Measurement System

A photograph of the SAR measurement System is given in Fig. a. This SAR Measurement System uses a Computer-controlled 3-D stepper motor system (Speag Dasy 4 professional system). A Model ET3DV6 1759 E-field probe is used to determine the internal electric fields. The SAR can be obtained from the equation $SAR = \sigma (|E_i|^2) / \rho$ where σ and ρ are the conductivity and mass density of the tissue-simulant.

The DASY4 system for performing compliance tests consists of the following items:

- A standard high precision 6-axis robot (Staubli RX family) with controller, teach pendant and software. An arm extension for accommodating the data acquisition electronics (DAE).
- A dosimetric probe, i.e., an isotropic E-field probe optimized and calibrated for usage in tissue simulating liquid. The probe is equipped with an optical surface detector system.
- A data acquisition electronics (DAE) which performs the signal amplification, signal multiplexing, AD-conversion, offset measurements, mechanical surface detection, collision detection, etc. The unit is battery powered with standard or rechargeable batteries. The signal is optically transmitted to the EOC.

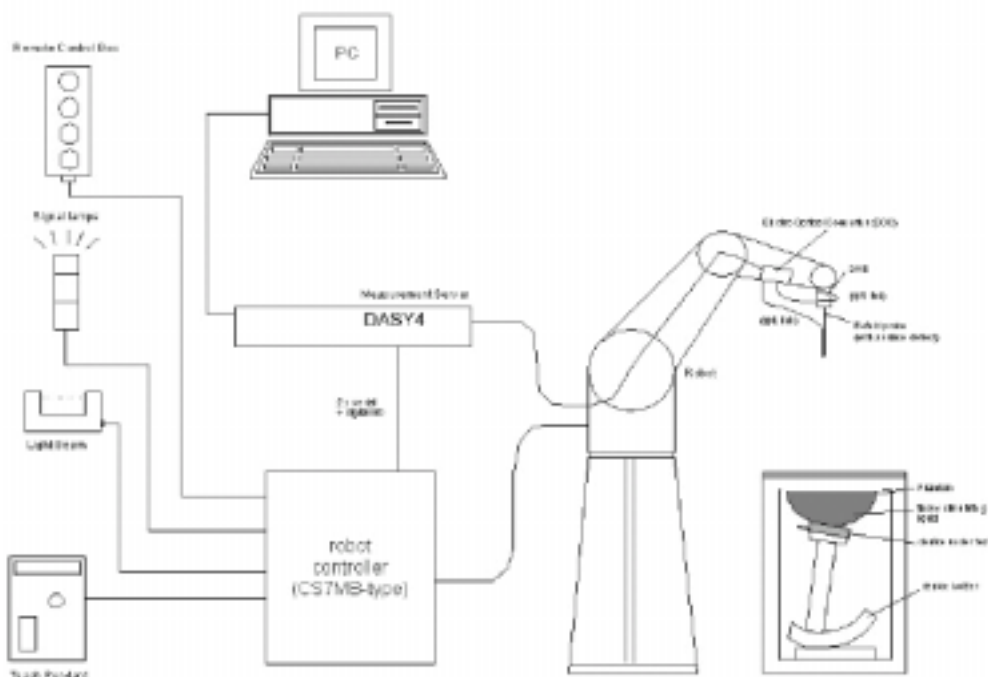


Fig.a The microwave circuit arrangement used for SAR system verification

- The Electro-optical converter (EOC) performs the conversion between optical and electrical of the signals for the digital communication to the DAE and for the analog

signal from the optical surface detection. The EOC is connected to the measurement server.

- The function of the measurement server is to perform the time critical tasks such as signal filtering, control of the robot operation and fast movement interrupts.
- A probe alignment unit which improves the (absolute) accuracy of the probe positioning.
- A computer operating Windows 2000 or Windows XP.
- DASY4 software.
- Remote control with teach pendant and additional circuitry for robot safety such as warning lamps, etc.
- The SAM twin phantom enabling testing left-hand and right-hand usage.
- The device holder for handheld mobile phones.
- Tissue simulating liquid mixed according to the given recipes.
- Validation dipole kits allowing to validate the proper functioning of the system.

1.7 System Components

ET3DV6 E-Field Probe

Construction: Symmetrical design with triangular core
Built-in shielding against static charges
PEEK enclosure material
(resistant to organic solvents, e.g. glycol)

Calibration: In air from 10 MHz to 2.5 GHz
In brain simulating tissue at
frequencies of 900 MHz
and 1.8 GHz (accuracy $\pm 8\%$)

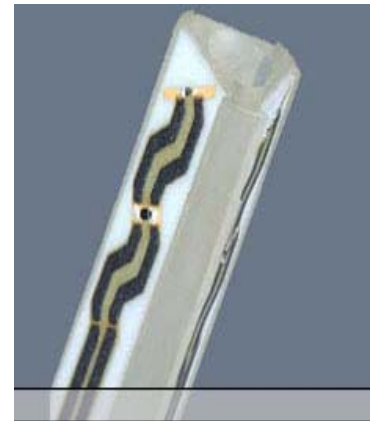
Frequency: 10 MHz to >6 GHz; Linearity: ± 0.2 dB
(30 MHz to 3 GHz)

Directivity: ± 0.2 dB in brain tissue (rotation around probe axis)
 ± 0.4 dB in brain tissue (rotation normal to probe axis)

Dynamic Range: 5 μ W/g to >100 mW/g; Linearity: ± 0.2 dB

Srfce. Detect: ± 0.2 mm repeatability in air and clear liquids over
diffuse reflecting surfaces

Dimensions: Overall length: 330 mm
Tip length: 16 mm
Body diameter: 12 mm



ET3DV6 E-Field Probe

Tip diameter: 6.8 mm

Distance from probe tip to dipole centers: 2.7 mm

Application: General dosimetry up to 3 GHz
Compliance tests of mobile phone

SAM PHANTOM V4.0C

Construction: The shell corresponds to the specifications of the Specific Anthropomorphic Mannequin (SAM) phantom defined in IEEE 1528-200X, CENELEC 50361 and IEC 62209. It enables the dosimetric evaluation of left and right hand phone usage as well as body mounted usage at the flat phantom region. A cover prevents evaporation of the liquid. Reference markings on the phantom allow the complete setup of all predefined phantom positions and measurement grids by manually teaching three points with the robot.

Shell Thickness: 2 ± 0.2 mm

Filling Volume: Approx. 25 liters

Dimensions: Height: 810 mm;
Length: 1000 mm;
Width: 500 mm



DEVICE HOLDER

Construction In combination with the Twin SAM Phantom V4.0/V4.0C or Twin SAM, the Mounting Device (made from POM) enables the rotation of the mounted transmitter in spherical coordinates, whereby the rotation point is the ear opening. The devices can be easily and accurately positioned according to IEC, IEEE, CENELEC, FCC or other specifications. The device holder can be locked at different phantom locations (left head, right head, flat phantom).



Device Holder

1.8 SAR System Verification

The microwave circuit arrangement for system verification is sketched in Fig.b. The Measured SAR distribution for the peak 1-g SAR is 13.7 m W/g and 10-g SAR is 6.12 m W/g. The measured 1-g SAR is 13.6 m W/g and 10-g SAR is 6.05 m W/g for this dipole. In comparison, it shows that the measured SAR plot is quite close to the original one.(see **APPENDIX** System Validation from Original equipment supplier SPEAG by Schmid & Partner)

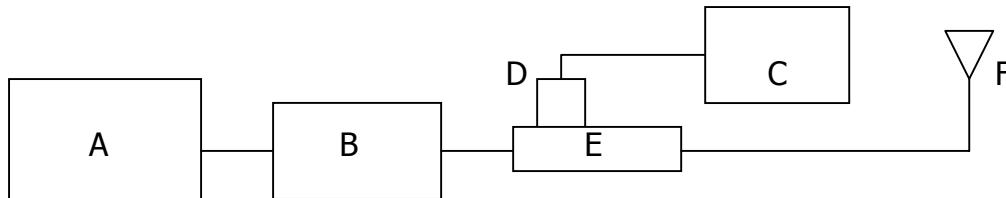
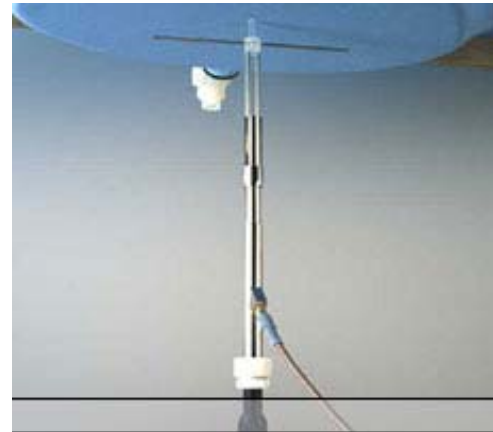


Fig.b The microwave circuit arrangement used for SAR system verification

- A. Agilent Model 8648D Signal Generator
- B. Mini circuits Model ZHL-42 Amplifier
- C. Agilent Model E4416A Power Meter
- D. Agilent Model 8482H Power Sensor
- E. Agilent Model 777D Dual directional coupling
- F. Reference dipole antenna



Photograph of the 2450MHz System Check

Validation Kit	Frequency	Target SAR 1g (250mW)	Target SAR 10g (250mW)	Measured SAR 1g	Measured SAR 10g	Measured date
DT3DV6 S/N :1759	2450 MHz	13.7 m W/g	6.02 m W/g	13.6 m W/g	6.12 m W/g	2003-10-07

Table 1. Results system validation

1.9 Tissue Simulant Fluid for the Frequency Band 2.4 to 2.5 GHz

The dielectric properties for this body-simulant fluid were measured by using the HP Model 85070D Dielectric Probe (rates frequency band 200 MHz to 20 GHz) in conjunction with HP 8714ET Network Analyzer(300 KHz-3000 MHz) by using a procedure detailed in Section V. The Measured dielectric parameters of the body-simulant fluid at 2400 MHz are $\rho = 52.5 \pm 5\%$, $\sigma = 2.00 \pm 10\%$ S/m. The measured properties are

close to the values of $\rho = 51.66$ and $\sigma = 1.943$ S/m. The Conductivity (σ) and Permittivity (ρ) are listed in Table 1. For the SAR measurement given in this report. We obtain the desired dielectric properties to simulate the body tissue at the midband frequency of 2437MHz to be $\rho = 51.62$ and $\sigma = 1.991$ S/m. (Table 2). A photograph of the Tissue Simulant Fluid liquid depth 15cm is given in Fig .10 .

Channel	Frequency (MHz)	Conductivity (σ)	Permittivity (ρ)
01	2412	1.958	51.71
06	2437	1.991	51.62
11	2462	2.018	51.45

Table 2. Dielectric parameters for the Frequency Band 2.4 to 2.5 GHz

1.10 Operation Procedure

By using the program subordinated in the computer, and change into the written channel, and then set in highest power. Finally, we will test it by dividing into 4 ways.

Configuration 1: " Edge-on" placement ; edge of the PC at 90° and at a distance of 1.5 cm from the base of the phantom and the antenna is in horizontal direction.(Fig.2 & Fig.3)

Configuration 2: " Edge-on" placement ; edge of the PC at 90° and at a distance of 1.5 cm from the base of the phantom, and the antenna tip upward.(Fig.4 & Fig.5)

Configuration 3: "End-on" placement; Bottom of the Pc is paralleled and at a distance of 0.0 cm from the base of the phantom, but 0.6 cm Spacing between EUT & Planar Phantom and the EUT antenna is in horizontal direction. (Fig.6 & Fig.7)

Configuration 4: "End-on" placement; Bottom of the Pc is paralleled and at a distance of 0.0 cm from the base of the phantom, but 0.6 cm Spacing between EUT & Planar Phantom and the EUT antenna tip downward. (Fig.8 & Fig.9)

The way by using the holder makes EUT 1.5cm close to the flat phantom then aims the center, and start to make the measurement. In doing so, we can measure data . All of the measured 1-g SAR are less then the FCC 96-326 guideline of 1.6 W/kg .The lowest channel supported by the EUT is channel 0, and highest channel can be measured is

channel 11. So the channels above are used as the lowest and highest channel in the testing, and the middle channel is set as channel 06.

1.11 Test Standards and Limits

According to FCC 47CFR §2.1093(d) The limits to be used for evaluation are based generally on criteria published by the American National Standards Institute (ANSI) for localized specific absorption rate ("SAR") in Section 4.2 of "IEEE Standard for Safety Levels with Respect to Human Exposure to Radio Frequency Electromagnetic Fields, 3 kHz to 300 GHz," ANSI/IEEE C95.1-1992, Copyright 1992 by the Institute of Electrical and Electronics Engineers, Inc., New York, New York 10017. These criteria for SAR evaluation are similar to those recommended by the National Council on Radiation Protection and Measurements (NCRP) in "Biological Effects and Exposure Criteria for Radiofrequency Electromagnetic Fields," NCRP Report No. 86, Section 17.4.5. Copyright NCRP, 1986, Bethesda, Maryland 20814. SAR is a measure of the rate of energy absorption due to exposure to an RF transmitting source. SAR values have been related to threshold levels for potential biological hazards. The criteria to be used are specified in paragraphs (d)(1) and (d)(2) of this section and shall apply for portable devices transmitting in the frequency range from 100 kHz to 6 GHz. Portable devices that transmit at frequencies above 6 GHz are to be evaluated in terms of the MPE limits specified in § 1.1310 of this chapter. Measurements and calculations to demonstrate compliance with MPE field strength or power density limits for devices operating above 6 GHz should be made at a minimum distance of 5 cm from the radiating source.

(1) Limits for Occupational/Controlled exposure: 0.4 W/kg as averaged over the whole-body and spatial peak SAR not exceeding 8 W/kg as averaged over any 1 gram of tissue (defined as a tissue volume in the shape of a cube). Exceptions are the hands, wrists, feet and ankles where the spatial peak SAR shall not exceed 20 W/kg, as averaged over an 10 grams of tissue (defined as a tissue volume in the shape of a cube). Occupational/Controlled limits apply when persons are exposed as a consequence of their employment provided these persons are fully aware of and exercise control over their exposure. Awareness of exposure can be accomplished by use of warning labels or by specific training or education through appropriate means, such as an RF safety program in a work environment.

(2) Limits for General Population/Uncontrolled exposure: 0.08 W/kg as averaged over the whole-body and spatial peak SAR not exceeding 1.6 W/kg as averaged over any 1

gram of tissue (defined as a tissue volume in the shape of a cube). Exceptions are the hands, wrists, feet and ankles where the spatial peak SAR shall not exceed 4 W/kg, as averaged over any 10 grams of tissue (defined as a tissue volume in the shape of a cube). General Population/Uncontrolled limits apply when the general public may be exposed, or when persons that are exposed as a consequence of their employment may not be fully aware of the potential for exposure or do not exercise control over their exposure. Warning labels placed on consumer devices such as cellular telephones will not be sufficient reason to allow these devices to be evaluated subject to limits for occupational/controlled exposure in paragraph (d)(1) of this section.(Table .4)

Human Exposure	Uncontrolled Environment General Population	Controlled Environment Occupational
Spatial Peak SAR (Brain)	1.60 m W/g	8.00 m W/g
Spatial Average SAR (Whole Body)	0.08 m W/g	0.40 m W/g
Spatial Peak SAR (Hands/Feet/Ankle/Wrist)	4.00 m W/g	20.00 m W/g

Table .4 RF exposure limits

Notes:

1. Uncontrolled environments are defined as locations where there is potential exposure of individuals who have no knowledge or control of their potential exposure.
2. Controlled environments are defined as locations where there is potential exposure of individuals who have knowledge of their potential exposure and can exercise control over their exposure.

2.Summary of Results

802.11 b Mode

SAR MEASUREMENT

Crest factor : 1 (Duty cycle: 100%)

Laptop PC : IBM ThinkPad T30 , S/N: 99AMZM5

Depth of Liquid : 15.0 cm

EUT Configuration 1

EUT Set-up conditions		Frequency		Conducted Power [dBm] (Peak)	Liquid Temp[°C]	SAR (W/kg)	Limit (W/kg)
Sep. [cm]	Antenna	Channel	MHz				
1.5	horizontal direction	1	2412	19.13 dBm (2412MHz)	22.1	0.0224	1.6
		6	2437	19.10 dBm (2437MHz)	22.1	0.0213	
		11	2462	19.04 dBm (2462MHz)	22.1	0.0179	

EUT Configuration 2

EUT Set-up conditions		Frequency		Conducted Power [dBm] (Peak)	Liquid Temp[°C]	SAR (W/kg)	Limit (W/kg)
Sep. [cm]	Antenna	Channel	MHz				
1.5	tip upward	1	2412	19.13 dBm (2412MHz)	22.1	0.0159	1.6
		6	2437	19.10 dBm (2437MHz)	22.1	0.0151	
		11	2462	19.04 dBm (2462MHz)	22.1	0.0155	

EUT Configuration 3

EUT Set-up conditions		Frequency		Conducted Power [dBm] (Peak)	Liquid Temp[°C]	SAR (W/kg)	Limit (W/kg)
Sep. [cm]	Antenna	Channel	MHz				
0.6	horizontal direction	1	2412	19.13 dBm (2412MHz)	22.1	0.0664	1.6
		6	2437	19.10 dBm (2437MHz)	22.1	0.0611	
		11	2462	19.04 dBm (2462MHz)	22.1	0.0545	

EUT Configuration 4

EUT Set-up conditions		Frequency		Conducted Power [dBm] (Peak)	Liquid Temp[°C]	SAR (W/kg)	Limit (W/kg)
Sep. [cm]	Antenna	Channel	MHz				
0.6	tip downward	1	2412	19.13 dBm (2412MHz)	22.1	0.0367	1.6
		6	2437	19.10 dBm (2437MHz)	22.1	0.0366	
		11	2462	19.04 dBm (2462MHz)	22.1	0.0369	

Measured Mixture Type	Body	Relative Humidity	62%
Ambient Temperature	22.6°C	Fluid Temperature	22°C

802.11 g Mode

SAR MEASUREMENT							
Crest factor : 1 (Duty cycle: 100%)							
Laptop PC : IBM ThinkPad T30 , S/N: 99AMZM5				Depth of Liquid : 15.0 cm			
EUT Configuration 1							
EUT Set-up conditions		Frequency		Conducted Power [dBm] (Peak)	Liquid Temp[°C]	SAR (W/kg)	Limit (W/kg)
Sep. [cm]	Antenna	Channel	MHz				
1.5	horizontal direction	1	2412	18.16 dBm (2412MHz)	22.1	0.0246	1.6
		6	2437	18.14 dBm (2437MHz)	22.1	0.0227	
		11	2462	18.07 dBm (2462MHz)	22.1	0.0253	
EUT Configuration 2							
EUT Set-up conditions		Frequency		Conducted Power [dBm] (Peak)	Liquid Temp[°C]	SAR (W/kg)	Limit (W/kg)
Sep. [cm]	Antenna	Channel	MHz				
1.5	tip upward	1	2412	18.16 dBm (2412MHz)	22.1	0.0159	1.6
		6	2437	18.14 dBm (2437MHz)	22.1	0.0165	
		11	2462	18.07 dBm (2462MHz)	22.1	0.0178	
EUT Configuration 3							
EUT Set-up conditions		Frequency		Conducted Power [dBm] (Peak)	Liquid Temp[°C]	SAR (W/kg)	Limit (W/kg)
Sep. [cm]	Antenna	Channel	MHz				
0.6	horizontal direction	1	2412	18.16 dBm (2412MHz)	22.1	0.0696	1.6
		6	2437	18.14 dBm (2437MHz)	22.1	0.0629	
		11	2462	18.07 dBm (2462MHz)	22.1	0.0665	
EUT Configuration 4							
EUT Set-up conditions		Frequency		Conducted Power [dBm] (Peak)	Liquid Temp[°C]	SAR (W/kg)	Limit (W/kg)
Sep. [cm]	Antenna	Channel	MHz				
0.6	tip downward	1	2412	18.16 dBm (2412MHz)	22.1	0.033	1.6
		6	2437	18.14 dBm (2437MHz)	22.1	0.0402	
		11	2462	18.07 dBm (2462MHz)	22.1	0.0456	

Measured Mixture Type	Body	Relative Humidity	62%
Ambient Temperature	22.6°C	Fluid Temperature	22°C

3. Instruments List

Manufacturer	Device	Type	Serial number	Date of last calibration
Schmid & Partner Engineering AG	Dosimetric E-Field Probe	ET3DV6	1759	Mar.07.2003
Schmid & Partner Engineering AG	2450 MHz System Validation Dipole	D2450V2	727	Mar.05. 2003
Schmid & Partner Engineering AG	Data acquisition Electronics	DAE3	547	Jan.30.2003
Schmid & Partner Engineering AG	Software	DASY 4 V4.1c Build 47	---	Calibration isn't necessary
Schmid & Partner Engineering AG	Phantom	SAM	---	Calibration isn't necessary
Agilent	Network Analyser	8714ET	US41442815	Jan.16.2003
Agilent	Dielectric Probe Kit	85070D	US01440168	Jan.20.2003

4. Measurements

(802.11 b & the antenna is in horizontal direction)

Edge-on position, lowest channel

Date/Time: 10/13/03 14:31:54

DUT: USB Stick; Type: WN-250gi;

Program: 802.11g/b WLAN USB Stick

Communication System: Wireless LAN; Frequency: 2412 MHz; Duty Cycle: 1:1

Medium: M2450 ($\sigma = 1.95826$ mho/m, $\epsilon_r = 51.7097$, $\rho = 1000$ kg/m³)

Phantom section: Flat Section

DASY4 Configuration:

- Probe: ET3DV6 - SN1759; ConvF(4.5, 4.5, 4.5); Calibrated: 2003/3/7
- Sensor-Surface: 4mm (Mechanical And Optical Surface Detection)
- Electronics: DAE3 Sn547; Calibrated: 2003/1/30
- Phantom: SAM 12; Type: SAM 4.0; Serial: TP:1150
- Measurement SW: DASY4, V4.1 Build 47; Postprocessing SW: SEMCAD, V1.6 Build 115

Horizontal /Area Scan (51x81x1): Measurement grid: dx=15mm, dy=15mm

Reference Value = 1.98 V/m

Power Drift = 0.1 dB

Maximum value of SAR = 0.023 mW/g

Horizontal /Zoom Scan (7x7x7)/Cube 0: Measurement grid: dx=5mm, dy=5mm, dz=5mm

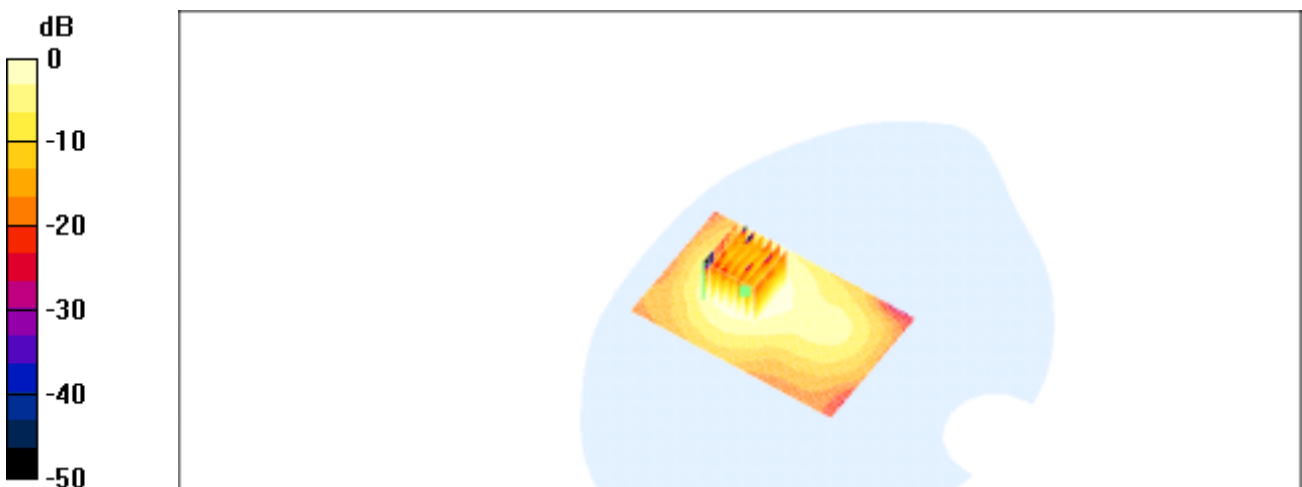
Peak SAR (extrapolated) = 0.0504 W/kg

SAR(1 g) = 0.0224 mW/g; SAR(10 g) = 0.0115 mW/g

Reference Value = 1.98 V/m

Power Drift = 0.1 dB

Maximum value of SAR = 0.0227 mW/g



(802.11 b & the antenna is in horizontal direction)

Edge-on position, middle channel

Date/Time: 10/13/03 16:34:29

**DUT: USB Stick; Type: WN-250gi;
Program: 802.11g/b WLAN USB Stick**

Communication System: Wireless LAN; Frequency: 2437 MHz;Duty Cycle: 1:1
Medium: M2450 ($\sigma = 1.99146$ mho/m, $\epsilon_r = 51.6172$, $\rho = 1000$ kg/m³)
Phantom section: Flat Section

DASY4 Configuration:

- Probe: ET3DV6 - SN1759; ConvF(4.5, 4.5, 4.5); Calibrated: 2003/3/7
- Sensor-Surface: 4mm (Mechanical And Optical Surface Detection)
- Electronics: DAE3 Sn547; Calibrated: 2003/1/30
- Phantom: SAM 12; Type: SAM 4.0; Serial: TP:1150
- Measurement SW: DASY4, V4.1 Build 47; Postprocessing SW: SEMCAD, V1.6 Build 115

Horizontal /Area Scan (51x81x1): Measurement grid: dx=15mm, dy=15mm

Reference Value = 1.84 V/m

Power Drift = 0.3 dB

Maximum value of SAR = 0.0222 mW/g

Horizontal /Zoom Scan (7x7x7)/Cube 0: Measurement grid: dx=5mm, dy=5mm, dz=5mm

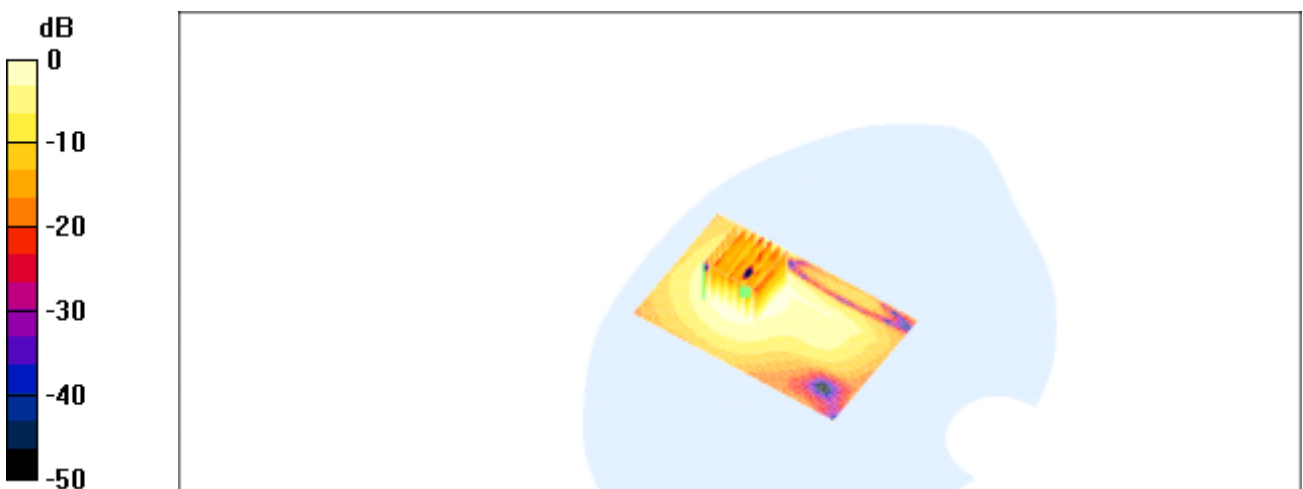
Peak SAR (extrapolated) = 0.0478 W/kg

SAR(1 g) = 0.0213 mW/g; SAR(10 g) = 0.011 mW/g

Reference Value = 1.84 V/m

Power Drift = 0.3 dB

Maximum value of SAR = 0.0215 mW/g



0 dB = 0.0215mW/g

(802.11 b & the antenna is in horizontal direction)

Edge-on position, highest channel

Date/Time: 10/13/03 15:59:46

**DUT: USB Stick; Type: WN-250gi;
Program: 802.11g/b WLAN USB Stick**

Communication System: Wireless LAN; Frequency: 2462 MHz; Duty Cycle: 1:1
Medium: M2450 ($\epsilon = 2.01798$ mho/m, $\mu_r = 51.4499$, $\rho = 1000$ kg/m³)
Phantom section: Flat Section

DASY4 Configuration:

- Probe: ET3DV6 - SN1759; ConvF(4.5, 4.5, 4.5); Calibrated: 2003/3/7
- Sensor-Surface: 4mm (Mechanical And Optical Surface Detection)
- Electronics: DAE3 Sn547; Calibrated: 2003/1/30
- Phantom: SAM 12; Type: SAM 4.0; Serial: TP:1150
- Measurement SW: DASY4, V4.1 Build 47; Postprocessing SW: SEMCAD, V1.6 Build 115

Horizontal /Area Scan (51x81x1): Measurement grid: dx=15mm, dy=15mm

Reference Value = 1.83 V/m

Power Drift = 0.4 dB

Maximum value of SAR = 0.0188 mW/g

Horizontal /Zoom Scan (7x7x7)/Cube 0: Measurement grid: dx=5mm, dy=5mm, dz=5mm

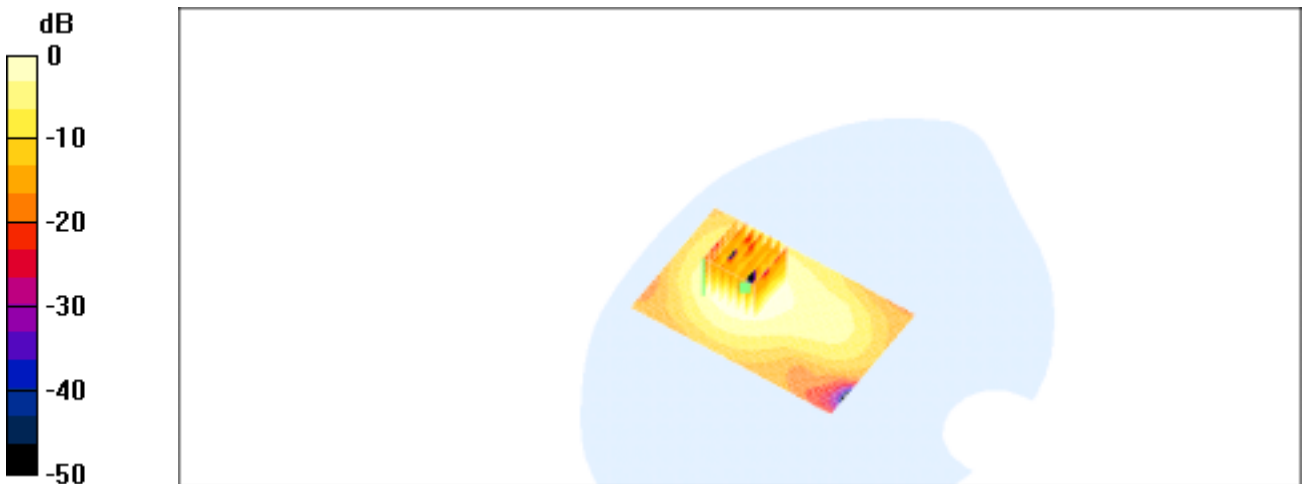
Peak SAR (extrapolated) = 0.0379 W/kg

SAR(1 g) = 0.0179 mW/g; SAR(10 g) = 0.00933 mW/g

Reference Value = 1.83 V/m

Power Drift = 0.4 dB

Maximum value of SAR = 0.0184 mW/g



0 dB = 0.0184mW/g

(802.11 b & the antenna tip upward)
Edge-on position, lowest channel

Date/Time: 10/13/03 13:30:47

DUT: USB Stick; Type: WN-250gi;
Program: 802.11g/b WLAN USB Stick

Communication System: Wireless LAN; Frequency: 2412 MHz; Duty Cycle: 1:1
Medium: M2450 ($\sigma = 1.95826$ mho/m, $\mu_r = 51.7097$, $\rho = 1000$ kg/m³)
Phantom section: Flat Section

DASY4 Configuration:

- Probe: ET3DV6 - SN1759; ConvF(4.5, 4.5, 4.5); Calibrated: 2003/3/7
- Sensor-Surface: 4mm (Mechanical And Optical Surface Detection)
- Electronics: DAE3 Sn547; Calibrated: 2003/1/30
- Phantom: SAM 12; Type: SAM 4.0; Serial: TP:1150
- Measurement SW: DASY4, V4.1 Build 47; Postprocessing SW: SEMCAD, V1.6 Build 115

Vertical/Area Scan (51x51x1): Measurement grid: dx=15mm, dy=15mm

Reference Value = 3.08 V/m

Power Drift = -0.1 dB

Maximum value of SAR = 0.0182 mW/g

Vertical/Zoom Scan (7x7x7)/Cube 0: Measurement grid: dx=5mm, dy=5mm, dz=5mm

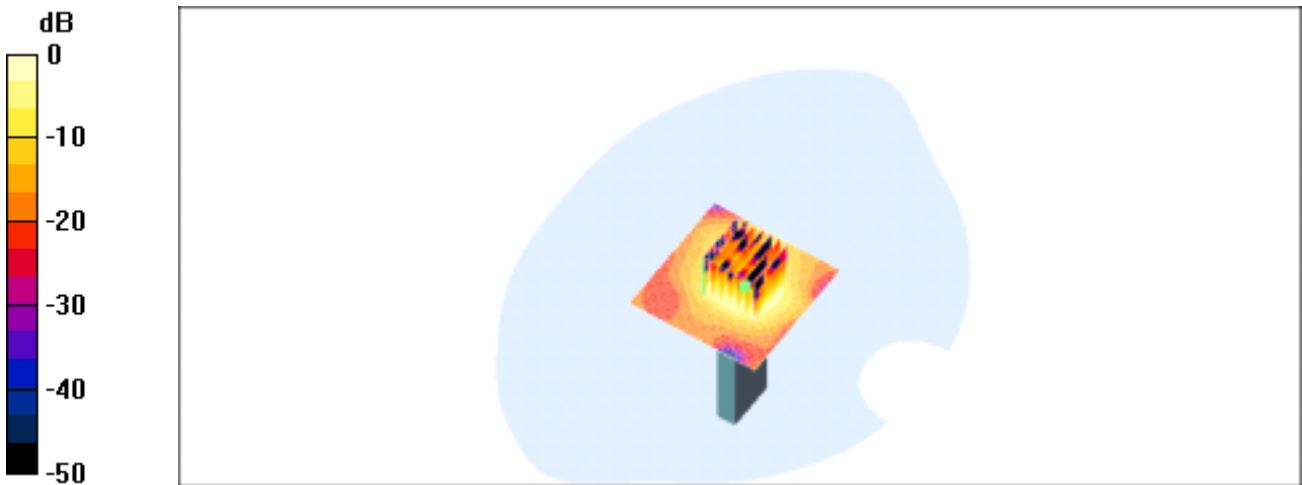
Peak SAR (extrapolated) = 0.0367 W/kg

SAR(1 g) = 0.0159 mW/g; SAR(10 g) = 0.00693 mW/g

Reference Value = 3.08 V/m

Power Drift = -0.1 dB

Maximum value of SAR = 0.0172 mW/g



0 dB = 0.0172mW/g

(802.11 b & the antenna tip upward)
Edge-on position, middle channel

Date/Time: 10/13/03 13:05:29

DUT: USB Stick; Type: WN-250gi;
Program: 802.11g/b WLAN USB Stick

Communication System: Wireless LAN; Frequency: 2437 MHz; Duty Cycle: 1:1
Medium: M2450 ($\sigma = 1.99146$ mho/m, $\epsilon_r = 51.6172$, $\rho = 1000$ kg/m³)
Phantom section: Flat Section

DASY4 Configuration:

- Probe: ET3DV6 - SN1759; ConvF(4.5, 4.5, 4.5); Calibrated: 2003/3/7
- Sensor-Surface: 4mm (Mechanical And Optical Surface Detection)
- Electronics: DAE3 Sn547; Calibrated: 2003/1/30
- Phantom: SAM 12; Type: SAM 4.0; Serial: TP:1150
- Measurement SW: DASY4, V4.1 Build 47; Postprocessing SW: SEMCAD, V1.6 Build 115

Vertical/Area Scan (51x51x1): Measurement grid: dx=15mm, dy=15mm

Reference Value = 3.04 V/m

Power Drift = -0.05 dB

Maximum value of SAR = 0.0174 mW/g

Vertical/Zoom Scan (7x7x7)/Cube 0: Measurement grid: dx=5mm, dy=5mm, dz=5mm

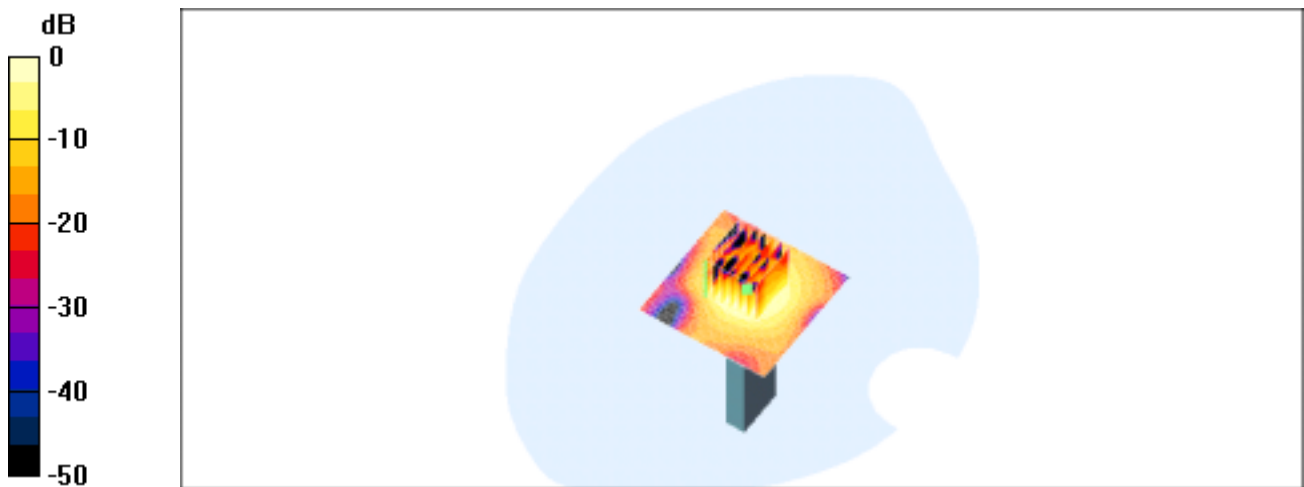
Peak SAR (extrapolated) = 0.033 W/kg

SAR(1 g) = 0.0151 mW/g; SAR(10 g) = 0.00667 mW/g

Reference Value = 3.04 V/m

Power Drift = -0.05 dB

Maximum value of SAR = 0.0164 mW/g



0 dB = 0.0164mW/g

(802.11 b & the antenna tip upward)
Edge-on position, highest channel

Date/Time: 10/13/03 12:30:34

DUT: USB Stick; Type: WN-250gi;
Program: 802.11g/b WLAN USB Stick

Communication System: Wireless LAN; Frequency: 2462 MHz; Duty Cycle: 1:1
Medium: M2450 ($\epsilon = 2.01798$ mho/m, $\mu_r = 51.4499$, $\rho = 1000$ kg/m³)
Phantom section: Flat Section

DASY4 Configuration:

- Probe: ET3DV6 - SN1759; ConvF(4.5, 4.5, 4.5); Calibrated: 2003/3/7
- Sensor-Surface: 4mm (Mechanical And Optical Surface Detection)
- Electronics: DAE3 Sn547; Calibrated: 2003/1/30
- Phantom: SAM 12; Type: SAM 4.0; Serial: TP:1150
- Measurement SW: DASY4, V4.1 Build 47; Postprocessing SW: SEMCAD, V1.6 Build 115

Vertical/Area Scan (51x51x1): Measurement grid: dx=15mm, dy=15mm

Reference Value = 3.05 V/m

Power Drift = -0.2 dB

Maximum value of SAR = 0.0173 mW/g

Vertical/Zoom Scan (7x7x7)/Cube 0: Measurement grid: dx=5mm, dy=5mm, dz=5mm

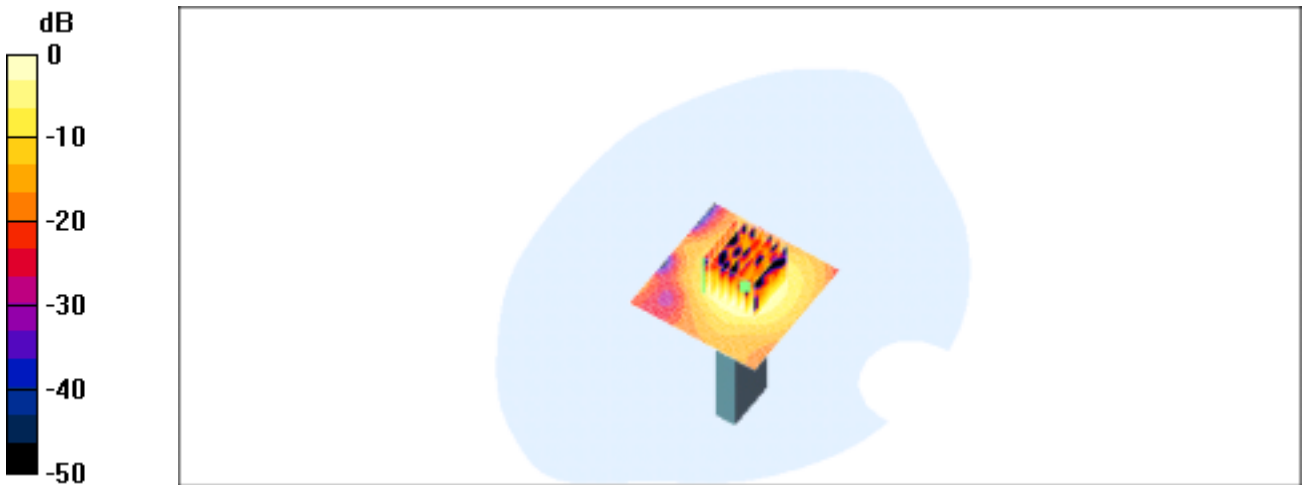
Peak SAR (extrapolated) = 0.0345 W/kg

SAR(1 g) = 0.0155 mW/g; SAR(10 g) = 0.00682 mW/g

Reference Value = 3.05 V/m

Power Drift = -0.2 dB

Maximum value of SAR = 0.0167 mW/g



0 dB = 0.0167mW/g

(802.11b & the antenna is in horizontal direction)

End-on position, lowest channel

Date/Time: 10/09/03 11:13:49

**DUT: USB Stick; Type: WN-250gi;
Program: 802.11g/b WLAN USB Stick**

Communication System: Wireless LAN; Frequency: 2412 MHz; Duty Cycle: 1:1
Medium: M2450 ($\epsilon = 1.95826$ mho/m, $\mu_r = 51.7097$, $\rho = 1000$ kg/m³)
Phantom section: Flat Section

DASY4 Configuration:

- Probe: ET3DV6 - SN1759; ConvF(4.5, 4.5, 4.5); Calibrated: 2003/3/7
- Sensor-Surface: 4mm (Mechanical And Optical Surface Detection)
- Electronics: DAE3 Sn547; Calibrated: 2003/1/30
- Phantom: SAM 12; Type: SAM 4.0; Serial: TP:1150
- Measurement SW: DASY4, V4.1 Build 47; Postprocessing SW: SEMCAD, V1.6 Build 115

Horizontal/Area Scan (31x81x1): Measurement grid: dx=15mm, dy=15mm

Reference Value = 4.88 V/m

Power Drift = -0.2 dB

Maximum value of SAR = 0.0778 mW/g

Horizontal/Zoom Scan (7x7x7)/Cube 0: Measurement grid: dx=5mm, dy=5mm, dz=5mm

Peak SAR (extrapolated) = 0.134 W/kg

SAR(1 g) = 0.0664 mW/g; SAR(10 g) = 0.0334 mW/g

Reference Value = 4.88 V/m

Power Drift = -0.2 dB

Maximum value of SAR = 0.071 mW/g



0 dB = 0.071mW/g

(802.11b & the antenna is in horizontal direction)

End-on position, middle channel

Date/Time: 10/09/03 11:38:59

**DUT: USB Stick; Type: WN-250gi;
Program: 802.11g/b WLAN USB Stick**

Communication System: Wireless LAN; Frequency: 2437 MHz; Duty Cycle: 1:1
Medium: M2450 ($\sigma = 1.99146$ mho/m, $\epsilon_r = 51.6172$, $\rho = 1000$ kg/m³)
Phantom section: Flat Section

DASY4 Configuration:

- Probe: ET3DV6 - SN1759; ConvF(4.5, 4.5, 4.5); Calibrated: 2003/3/7
- Sensor-Surface: 4mm (Mechanical And Optical Surface Detection)
- Electronics: DAE3 Sn547; Calibrated: 2003/1/30
- Phantom: SAM 12; Type: SAM 4.0; Serial: TP:1150
- Measurement SW: DASY4, V4.1 Build 47; Postprocessing SW: SEMCAD, V1.6 Build 115

Horizontal/Area Scan (31x81x1): Measurement grid: dx=15mm, dy=15mm

Reference Value = 4.87 V/m

Power Drift = -0.03 dB

Maximum value of SAR = 0.0707 mW/g

Horizontal/Zoom Scan (7x7x7)/Cube 0: Measurement grid: dx=5mm, dy=5mm, dz=5mm

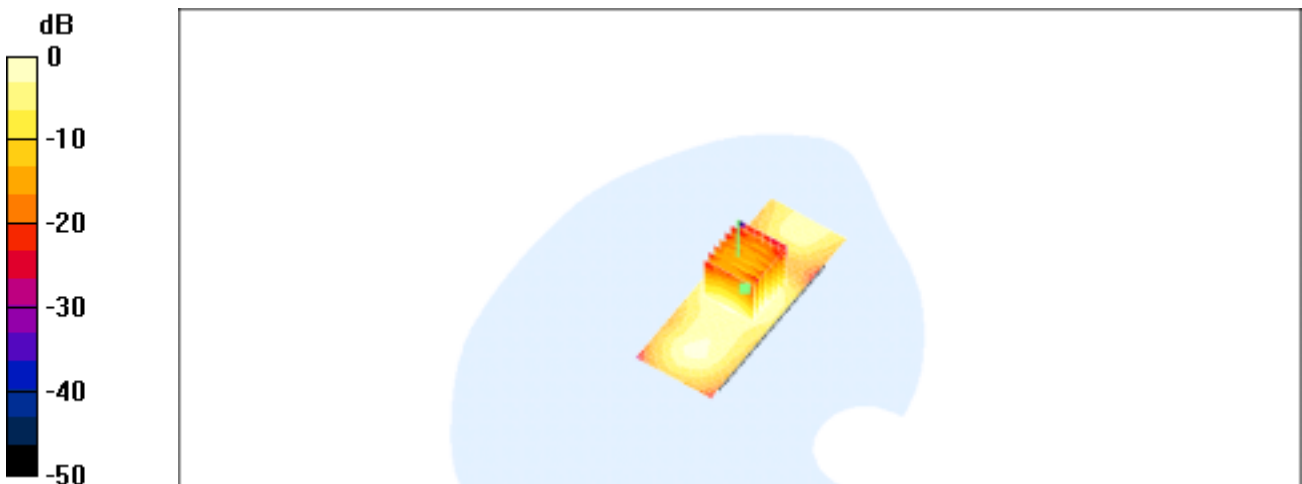
Peak SAR (extrapolated) = 0.127 W/kg

SAR(1 g) = 0.0611 mW/g; SAR(10 g) = 0.0302 mW/g

Reference Value = 4.87 V/m

Power Drift = -0.03 dB

Maximum value of SAR = 0.0645 mW/g



0 dB = 0.0645mW/g

(802.11b & the antenna is in horizontal direction)

End-on position, highest channel

Date/Time: 10/09/03 14:28:48

**DUT: USB Stick; Type: WN-250gi;
Program: 802.11g/b WLAN USB Stick**

Communication System: Wireless LAN; Frequency: 2462 MHz; Duty Cycle: 1:1
Medium: M2450 ($\sigma = 2.01798$ mho/m, $\epsilon_r = 51.4499$, $\rho = 1000$ kg/m³)
Phantom section: Flat Section

DASY4 Configuration:

- Probe: ET3DV6 - SN1759; ConvF(4.5, 4.5, 4.5); Calibrated: 2003/3/7
- Sensor-Surface: 4mm (Mechanical And Optical Surface Detection)
- Electronics: DAE3 Sn547; Calibrated: 2003/1/30
- Phantom: SAM 12; Type: SAM 4.0; Serial: TP:1150
- Measurement SW: DASY4, V4.1 Build 47; Postprocessing SW: SEMCAD, V1.6 Build 115

Horizontal/Area Scan (31x81x1): Measurement grid: dx=15mm, dy=15mm

Reference Value = 4.72 V/m

Power Drift = 0.1 dB

Maximum value of SAR = 0.0645 mW/g

Horizontal/Zoom Scan (7x7x7)/Cube 0: Measurement grid: dx=5mm, dy=5mm, dz=5mm

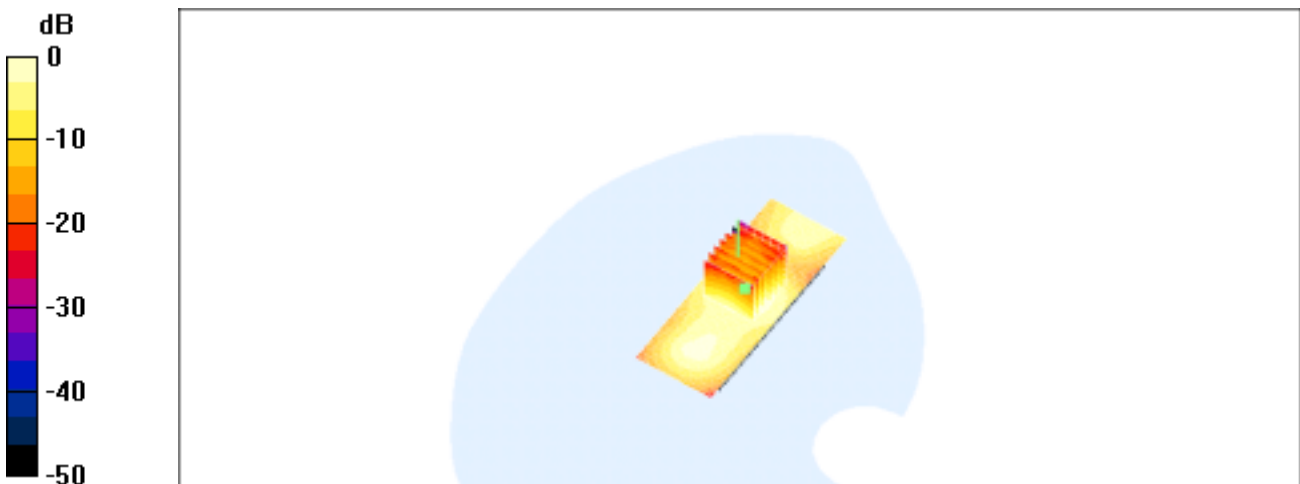
Peak SAR (extrapolated) = 0.113 W/kg

SAR(1 g) = 0.0545 mW/g; SAR(10 g) = 0.0266 mW/g

Reference Value = 4.72 V/m

Power Drift = 0.1 dB

Maximum value of SAR = 0.058 mW/g



0 dB = 0.058mW/g

(802.11 b & the antenna tip downward)
End-on position, lowest channel

Date/Time: 10/09/03 16:15:12

DUT: USB Stick; Type: WN-250gi;
Program: 802.11g/b WLAN USB Stick

Communication System: Wireless LAN; Frequency: 2412 MHz; Duty Cycle: 1:1
Medium: M2450 ($\epsilon = 1.95826$ mho/m, $\mu_r = 51.7097$, $\rho = 1000$ kg/m³)
Phantom section: Flat Section

DASY4 Configuration:

- Probe: ET3DV6 - SN1759; ConvF(4.5, 4.5, 4.5); Calibrated: 2003/3/7
- Sensor-Surface: 4mm (Mechanical And Optical Surface Detection)
- Electronics: DAE3 Sn547; Calibrated: 2003/1/30
- Phantom: SAM 12; Type: SAM 4.0; Serial: TP:1150
- Measurement SW: DASY4, V4.1 Build 47; Postprocessing SW: SEMCAD, V1.6 Build 115

Vertical/Area Scan (41x51x1): Measurement grid: dx=15mm, dy=15mm

Reference Value = 1.25 V/m

Power Drift = -0.1 dB

Maximum value of SAR = 0.0408 mW/g

Vertical/Zoom Scan (7x7x7)/Cube 0: Measurement grid: dx=5mm, dy=5mm, dz=5mm

Peak SAR (extrapolated) = 0.0787 W/kg

SAR(1 g) = 0.0367 mW/g; SAR(10 g) = 0.0168 mW/g

Reference Value = 1.25 V/m

Power Drift = -0.1 dB

Maximum value of SAR = 0.0402 mW/g



0 dB = 0.0402mW/g

(802.11b & the antenna tip downward)

End-on position, middle channel

Date/Time: 10/09/03 16:38:03

**DUT: USB Stick; Type: WN-250gi;
Program: 802.11g/b WLAN USB Stick**

Communication System: Wireless LAN; Frequency: 2437 MHz; Duty Cycle: 1:1
Medium: M2450 ($\epsilon = 1.99146$ mho/m, $\mu_r = 51.6172$, $\rho = 1000$ kg/m³)
Phantom section: Flat Section

DASY4 Configuration:

- Probe: ET3DV6 - SN1759; ConvF(4.5, 4.5, 4.5); Calibrated: 2003/3/7
- Sensor-Surface: 4mm (Mechanical And Optical Surface Detection)
- Electronics: DAE3 Sn547; Calibrated: 2003/1/30
- Phantom: SAM 12; Type: SAM 4.0; Serial: TP:1150
- Measurement SW: DASY4, V4.1 Build 47; Postprocessing SW: SEMCAD, V1.6 Build 115

Vertical/Area Scan (41x51x1): Measurement grid: dx=15mm, dy=15mm

Reference Value = 1.1 V/m

Power Drift = -0.2 dB

Maximum value of SAR = 0.0411 mW/g

Vertical/Zoom Scan (7x7x7)/Cube 0: Measurement grid: dx=5mm, dy=5mm, dz=5mm

Peak SAR (extrapolated) = 0.0822 W/kg

SAR(1 g) = 0.0366 mW/g; SAR(10 g) = 0.0165 mW/g

Reference Value = 1.1 V/m

Power Drift = -0.2 dB

Maximum value of SAR = 0.0404 mW/g



0 dB = 0.0404mW/g

(802.11 b & the antenna tip downward)

Edge-on position, highest channel

Date/Time: 10/09/03 17:04:26

**DUT: USB Stick; Type: WN-250gi;
Program: 802.11g/b WLAN USB Stick**

Communication System: Wireless LAN; Frequency: 2462 MHz; Duty Cycle: 1:1
Medium: M2450 ($\sigma = 2.01798$ mho/m, $\epsilon_r = 51.4499$, $\rho = 1000$ kg/m³)
Phantom section: Flat Section

DASY4 Configuration:

- Probe: ET3DV6 - SN1759; ConvF(4.5, 4.5, 4.5); Calibrated: 2003/3/7
- Sensor-Surface: 4mm (Mechanical And Optical Surface Detection)
- Electronics: DAE3 Sn547; Calibrated: 2003/1/30
- Phantom: SAM 12; Type: SAM 4.0; Serial: TP:1150
- Measurement SW: DASY4, V4.1 Build 47; Postprocessing SW: SEMCAD, V1.6 Build 115

Vertical/Area Scan (41x51x1): Measurement grid: dx=15mm, dy=15mm

Reference Value = 1.08 V/m

Power Drift = -0.003 dB

Maximum value of SAR = 0.0408 mW/g

Vertical/Zoom Scan (7x7x7)/Cube 0: Measurement grid: dx=5mm, dy=5mm, dz=5mm

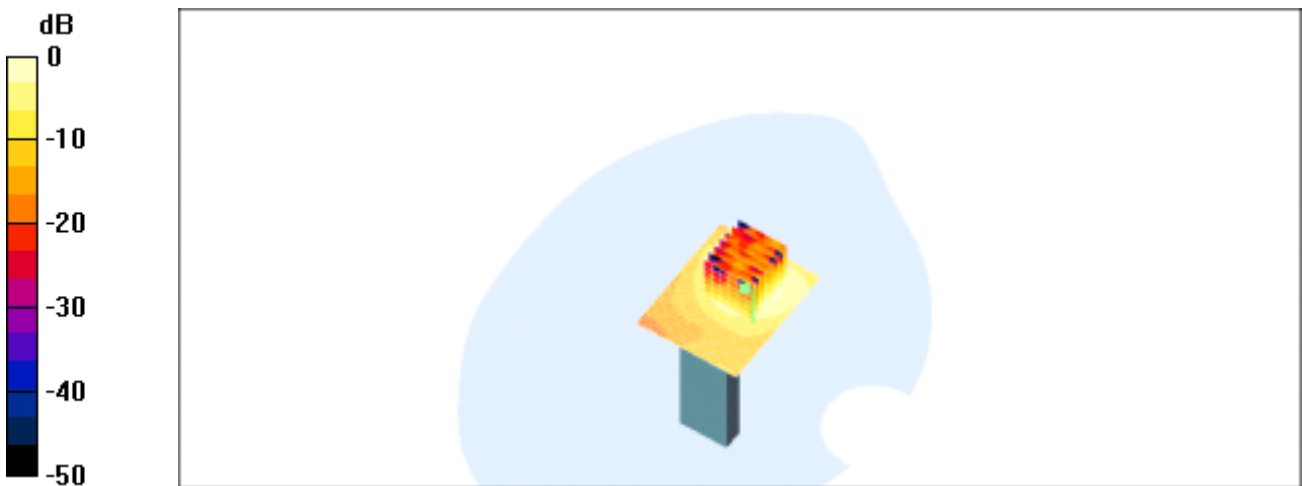
Peak SAR (extrapolated) = 0.0804 W/kg

SAR(1 g) = 0.0369 mW/g; SAR(10 g) = 0.0167 mW/g

Reference Value = 1.08 V/m

Power Drift = -0.003 dB

Maximum value of SAR = 0.0407 mW/g



0 dB = 0.0407mW/g

(802.11 g & the antenna is in horizontal direction)

Edge-on position, lowest channel

Date/Time: 10/13/03 18:16:37

**DUT: USB Stick; Type: WN-250gi;
Program: 802.11g/b WLAN USB Stick**

Communication System: Wireless LAN; Frequency: 2412 MHz; Duty Cycle: 1:1
Medium: M2450 ($\epsilon = 1.95826$ mho/m, $\mu_r = 51.7097$, $\rho = 1000$ kg/m³)
Phantom section: Flat Section

DASY4 Configuration:

- Probe: ET3DV6 - SN1759; ConvF(4.5, 4.5, 4.5); Calibrated: 2003/3/7
- Sensor-Surface: 4mm (Mechanical And Optical Surface Detection)
- Electronics: DAE3 Sn547; Calibrated: 2003/1/30
- Phantom: SAM 12; Type: SAM 4.0; Serial: TP:1150
- Measurement SW: DASY4, V4.1 Build 47; Postprocessing SW: SEMCAD, V1.6 Build 115

Horizontal/Area Scan (51x81x1): Measurement grid: dx=15mm, dy=15mm

Reference Value = 1.82 V/m

Power Drift = 0.09 dB

Maximum value of SAR = 0.0256 mW/g

Horizontal/Zoom Scan (7x7x7)/Cube 0: Measurement grid: dx=5mm, dy=5mm, dz=5mm

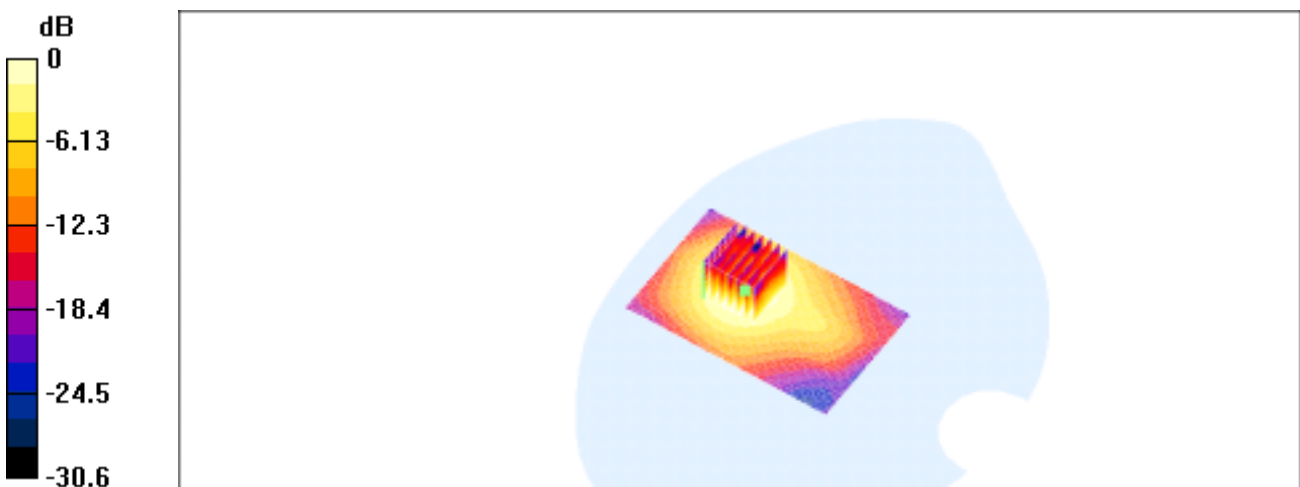
Peak SAR (extrapolated) = 0.0535 W/kg

SAR(1 g) = 0.0246 mW/g; SAR(10 g) = 0.0127 mW/g

Reference Value = 1.82 V/m

Power Drift = 0.09 dB

Maximum value of SAR = 0.0255 mW/g



(802.11 g & the antenna is in horizontal direction)

Edge-on position, middle channel

Date/Time: 10/13/03 18:43:31

**DUT: USB Stick; Type: WN-250gi;
Program: 802.11g/b WLAN USB Stick**

Communication System: Wireless LAN; Frequency: 2437 MHz; Duty Cycle: 1:1
Medium: M2450 ($\epsilon = 1.99146$ mho/m, $\mu_r = 51.6172$, $\rho = 1000$ kg/m³)
Phantom section: Flat Section

DASY4 Configuration:

- Probe: ET3DV6 - SN1759; ConvF(4.5, 4.5, 4.5); Calibrated: 2003/3/7
- Sensor-Surface: 4mm (Mechanical And Optical Surface Detection)
- Electronics: DAE3 Sn547; Calibrated: 2003/1/30
- Phantom: SAM 12; Type: SAM 4.0; Serial: TP:1150
- Measurement SW: DASY4, V4.1 Build 47; Postprocessing SW: SEMCAD, V1.6 Build 115

Horizontal/Area Scan (51x81x1): Measurement grid: dx=15mm, dy=15mm

Reference Value = 2.03 V/m

Power Drift = 0.1 dB

Maximum value of SAR = 0.0232 mW/g

Horizontal/Zoom Scan (7x7x7)/Cube 0: Measurement grid: dx=5mm, dy=5mm, dz=5mm

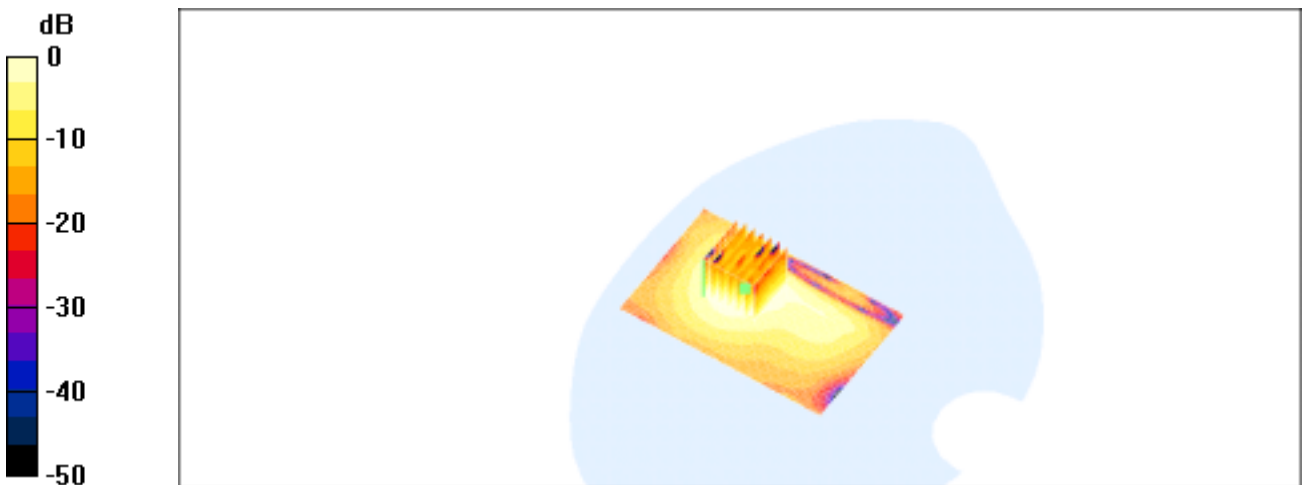
Peak SAR (extrapolated) = 0.0484 W/kg

SAR(1 g) = 0.0227 mW/g; SAR(10 g) = 0.0117 mW/g

Reference Value = 2.03 V/m

Power Drift = 0.1 dB

Maximum value of SAR = 0.0237 mW/g



0 dB = 0.0237mW/g

(802.11 g & the antenna is in horizontal direction)

Edge-on position, highest channel

Date/Time: 10/13/03 19:20:40

**DUT: USB Stick; Type: WN-250gi;
Program: 802.11g/b WLAN USB Stick**

Communication System: Wireless LAN; Frequency: 2462 MHz;Duty Cycle: 1:1
Medium: M2450 ($\epsilon = 2.01798$ mho/m, $\mu_r = 51.4499$, $\rho = 1000$ kg/m³)
Phantom section: Flat Section

DASY4 Configuration:

- Probe: ET3DV6 - SN1759; ConvF(4.5, 4.5, 4.5); Calibrated: 2003/3/7
- Sensor-Surface: 4mm (Mechanical And Optical Surface Detection)
- Electronics: DAE3 Sn547; Calibrated: 2003/1/30
- Phantom: SAM 12; Type: SAM 4.0; Serial: TP:1150
- Measurement SW: DASY4, V4.1 Build 47; Postprocessing SW: SEMCAD, V1.6 Build 115

Horizontal/Area Scan (51x81x1): Measurement grid: dx=15mm, dy=15mm

Reference Value = 2.12 V/m

Power Drift = -0.1 dB

Maximum value of SAR = 0.0247 mW/g

Horizontal/Zoom Scan (7x7x7)/Cube 0: Measurement grid: dx=5mm, dy=5mm, dz=5mm

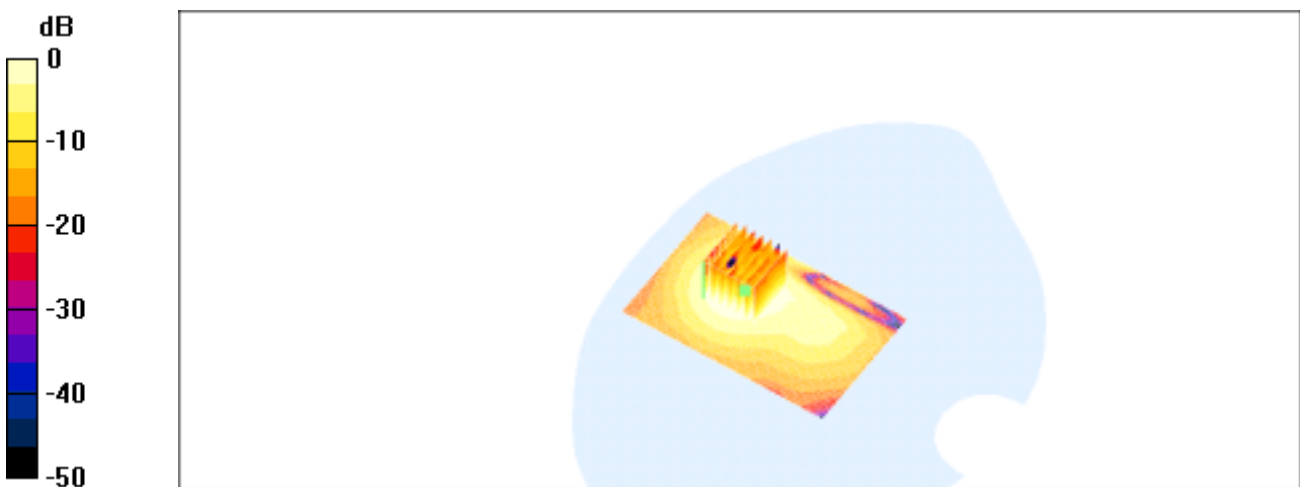
Peak SAR (extrapolated) = 5.39 W/kg

SAR(1 g) = 0.0656 mW/g; SAR(10 g) = 0.0165 mW/g

Reference Value = 2.12 V/m

Power Drift = -0.1 dB

Maximum value of SAR = 0.0253 mW/g



0 dB = 0.0253mW/g

(802.11 g & the antenna tip upward)
Edge-on position, lowest channel

Date/Time: 10/13/03 10:47:58

DUT: USB Stick; Type: WN-250gi;
Program: 802.11g/b WLAN USB Stick

Communication System: Wireless LAN; Frequency: 2412 MHz; Duty Cycle: 1:1
Medium: M2450 ($\sigma = 1.95826$ mho/m, $\epsilon_r = 51.7097$, $\rho = 1000$ kg/m³)
Phantom section: Flat Section

DASY4 Configuration:

- Probe: ET3DV6 - SN1759; ConvF(4.5, 4.5, 4.5); Calibrated: 2003/3/7
- Sensor-Surface: 4mm (Mechanical And Optical Surface Detection)
- Electronics: DAE3 Sn547; Calibrated: 2003/1/30
- Phantom: SAM 12; Type: SAM 4.0; Serial: TP:1150
- Measurement SW: DASY4, V4.1 Build 47; Postprocessing SW: SEMCAD, V1.6 Build 115

Vertical/Area Scan (51x51x1): Measurement grid: dx=15mm, dy=15mm

Reference Value = 3.13 V/m

Power Drift = -0.08 dB

Maximum value of SAR = 0.0184 mW/g

Vertical/Zoom Scan (7x7x7)/Cube 0: Measurement grid: dx=5mm, dy=5mm, dz=5mm

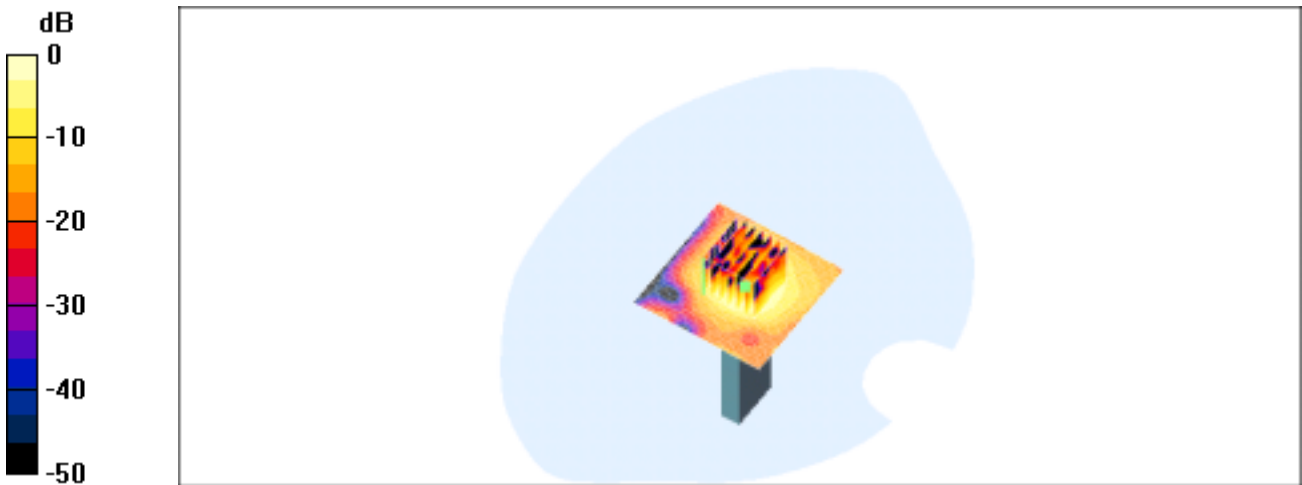
Peak SAR (extrapolated) = 0.0379 W/kg

SAR(1 g) = 0.0159 mW/g; SAR(10 g) = 0.00698 mW/g

Reference Value = 3.13 V/m

Power Drift = -0.08 dB

Maximum value of SAR = 0.0175 mW/g



0 dB = 0.0175mW/g

(802.11 g & the antenna tip upward)
Edge-on position, middle channel

Date/Time: 10/13/03 11:11:29

DUT: USB Stick; Type: WN-250gi;
Program: 802.11g/b WLAN USB Stick

Communication System: Wireless LAN; Frequency: 2437 MHz; Duty Cycle: 1:1
Medium: M2450 ($\sigma = 1.99146$ mho/m, $\epsilon_r = 51.6172$, $\rho = 1000$ kg/m³)
Phantom section: Flat Section

DASY4 Configuration:

- Probe: ET3DV6 - SN1759; ConvF(4.5, 4.5, 4.5); Calibrated: 2003/3/7
- Sensor-Surface: 4mm (Mechanical And Optical Surface Detection)
- Electronics: DAE3 Sn547; Calibrated: 2003/1/30
- Phantom: SAM 12; Type: SAM 4.0; Serial: TP:1150
- Measurement SW: DASY4, V4.1 Build 47; Postprocessing SW: SEMCAD, V1.6 Build 115

Vertical/Area Scan (51x51x1): Measurement grid: dx=15mm, dy=15mm

Reference Value = 3.24 V/m

Power Drift = -0.06 dB

Maximum value of SAR = 0.0204 mW/g

Vertical/Zoom Scan (7x7x7)/Cube 0: Measurement grid: dx=5mm, dy=5mm, dz=5mm

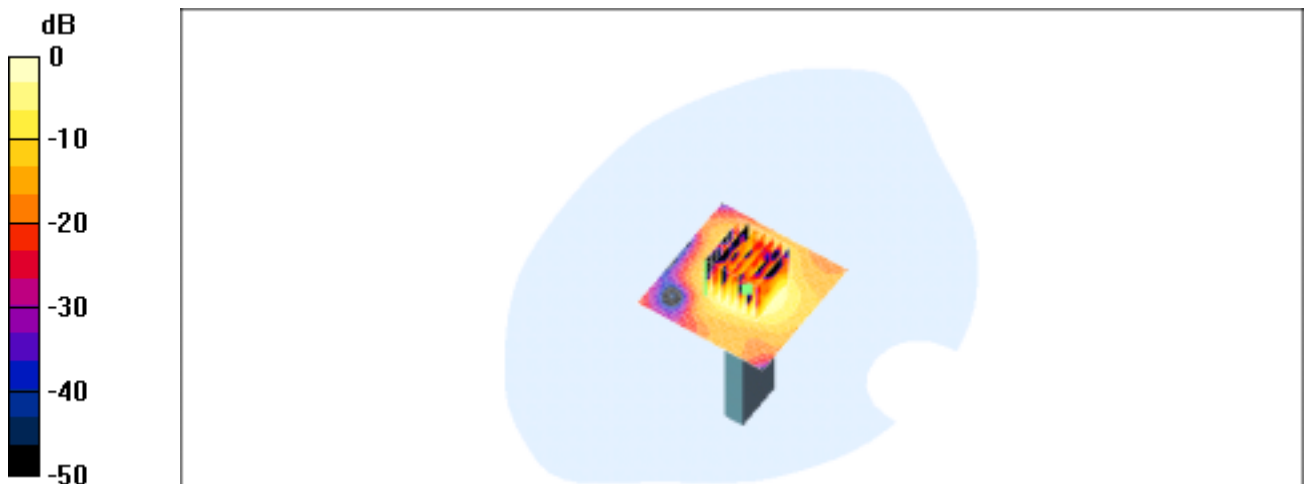
Peak SAR (extrapolated) = 0.0357 W/kg

SAR(1 g) = 0.0165 mW/g; SAR(10 g) = 0.00738 mW/g

Reference Value = 3.24 V/m

Power Drift = -0.06 dB

Maximum value of SAR = 0.0177 mW/g



0 dB = 0.0177mW/g

(802.11 g & the antenna tip upward)
Edge-on position, highest channel

Date/Time: 10/13/03 11:42:54

DUT: USB Stick; Type: WN-250gi;
Program: 802.11g/b WLAN USB Stick

Communication System: Wireless LAN; Frequency: 2462 MHz; Duty Cycle: 1:1
Medium: M2450 ($\rho = 2.01798$ mho/m, $r = 51.4499$, $\rho = 1000$ kg/m³)
Phantom section: Flat Section

DASY4 Configuration:

- Probe: ET3DV6 - SN1759; ConvF(4.5, 4.5, 4.5); Calibrated: 2003/3/7
- Sensor-Surface: 4mm (Mechanical And Optical Surface Detection)
- Electronics: DAE3 Sn547; Calibrated: 2003/1/30
- Phantom: SAM 12; Type: SAM 4.0; Serial: TP:1150
- Measurement SW: DASY4, V4.1 Build 47; Postprocessing SW: SEMCAD, V1.6 Build 115

Vertical/Area Scan (51x51x1): Measurement grid: dx=15mm, dy=15mm

Reference Value = 3.24 V/m

Power Drift = -0.01 dB

Maximum value of SAR = 0.0206 mW/g

Vertical/Zoom Scan (7x7x7)/Cube 0: Measurement grid: dx=5mm, dy=5mm, dz=5mm

Peak SAR (extrapolated) = 0.0387 W/kg

SAR(1 g) = 0.0178 mW/g; SAR(10 g) = 0.00796 mW/g

Reference Value = 3.24 V/m

Power Drift = -0.01 dB

Maximum value of SAR = 0.0192 mW/g



0 dB = 0.0192mW/g

(802.11g & the antenna is in horizontal direction)

End-on position, lowest channel

Date/Time: 10/09/03 13:07:11

**DUT: USB Stick; Type: WN-250gi;
Program: 802.11g/b WLAN USB Stick**

Communication System: Wireless LAN; Frequency: 2412 MHz;Duty Cycle: 1:1
Medium: M2450 ($\epsilon = 1.95826$ mho/m, $\mu = 51.7097$, $\rho = 1000$ kg/m³)
Phantom section: Flat Section

DASY4 Configuration:

- Probe: ET3DV6 - SN1759; ConvF(4.5, 4.5, 4.5); Calibrated: 2003/3/7
- Sensor-Surface: 4mm (Mechanical And Optical Surface Detection)
- Electronics: DAE3 Sn547; Calibrated: 2003/1/30
- Phantom: SAM 12; Type: SAM 4.0; Serial: TP:1150
- Measurement SW: DASY4, V4.1 Build 47; Postprocessing SW: SEMCAD, V1.6 Build 115

Horizontal/Area Scan (31x81x1): Measurement grid: dx=15mm, dy=15mm

Reference Value = 5.21 V/m

Power Drift = 0.01 dB

Maximum value of SAR = 0.0817 mW/g

Horizontal/Zoom Scan (7x7x7)/Cube 0: Measurement grid: dx=5mm, dy=5mm, dz=5mm

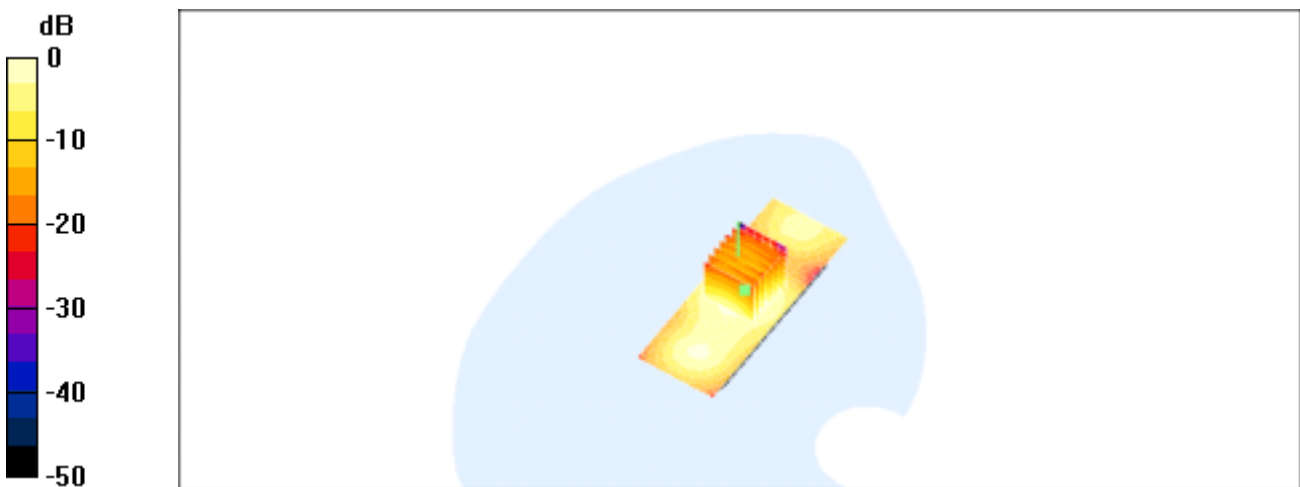
Peak SAR (extrapolated) = 0.14 W/kg

SAR(1 g) = 0.0696 mW/g; SAR(10 g) = 0.0349 mW/g

Reference Value = 5.21 V/m

Power Drift = 0.01 dB

Maximum value of SAR = 0.0739 mW/g



0 dB = 0.0739mW/g

(802.11g & the antenna is in horizontal direction)

End-on position, middle channel

Date/Time: 10/09/03 13:35:42

**DUT: USB Stick; Type: WN-250gi;
Program: 802.11g/b WLAN USB Stick**

Communication System: Wireless LAN; Frequency: 2437 MHz;Duty Cycle: 1:1
Medium: M2450 ($\sigma = 1.99146$ mho/m, $\epsilon_r = 51.6172$, $\rho = 1000$ kg/m³)
Phantom section: Flat Section

DASY4 Configuration:

- Probe: ET3DV6 - SN1759; ConvF(4.5, 4.5, 4.5); Calibrated: 2003/3/7
- Sensor-Surface: 4mm (Mechanical And Optical Surface Detection)
- Electronics: DAE3 Sn547; Calibrated: 2003/1/30
- Phantom: SAM 12; Type: SAM 4.0; Serial: TP:1150
- Measurement SW: DASY4, V4.1 Build 47; Postprocessing SW: SEMCAD, V1.6 Build 115

Horizontal/Area Scan (31x81x1): Measurement grid: dx=15mm, dy=15mm

Reference Value = 4.96 V/m

Power Drift = -0.05 dB

Maximum value of SAR = 0.0743 mW/g

Horizontal/Zoom Scan (7x7x7)/Cube 0: Measurement grid: dx=5mm, dy=5mm, dz=5mm

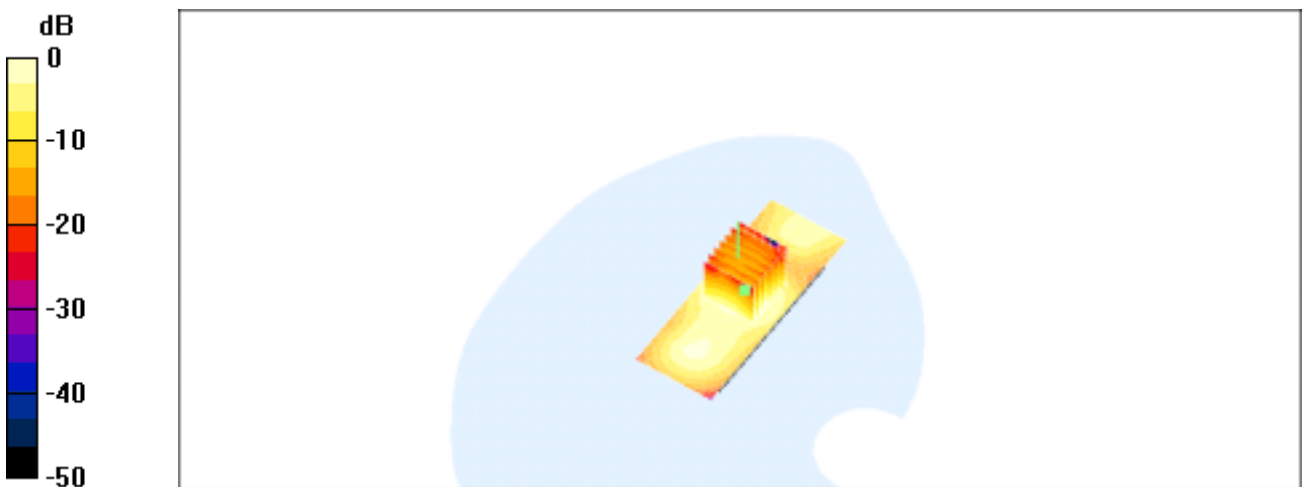
Peak SAR (extrapolated) = 0.129 W/kg

SAR(1 g) = 0.0629 mW/g; SAR(10 g) = 0.0309 mW/g

Reference Value = 4.96 V/m

Power Drift = -0.05 dB

Maximum value of SAR = 0.0665 mW/g



0 dB = 0.0665mW/g

(802.11g & the antenna is in horizontal direction)

End-on position, highest channel

Date/Time: 10/09/03 13:59:12

**DUT: USB Stick; Type: WN-250gi;
Program: 802.11g/b WLAN USB Stick**

Communication System: Wireless LAN; Frequency: 2462 MHz; Duty Cycle: 1:1
Medium: M2450 ($\sigma = 2.01798$ mho/m, $\epsilon_r = 51.4499$, $\rho = 1000$ kg/m³)
Phantom section: Flat Section

DASY4 Configuration:

- Probe: ET3DV6 - SN1759; ConvF(4.5, 4.5, 4.5); Calibrated: 2003/3/7
- Sensor-Surface: 4mm (Mechanical And Optical Surface Detection)
- Electronics: DAE3 Sn547; Calibrated: 2003/1/30
- Phantom: SAM 12; Type: SAM 4.0; Serial: TP:1150
- Measurement SW: DASY4, V4.1 Build 47; Postprocessing SW: SEMCAD, V1.6 Build 115

Horizontal/Area Scan (31x81x1): Measurement grid: dx=15mm, dy=15mm

Reference Value = 5.37 V/m

Power Drift = -0.06 dB

Maximum value of SAR = 0.08 mW/g

Horizontal/Zoom Scan (7x7x7)/Cube 0: Measurement grid: dx=5mm, dy=5mm, dz=5mm

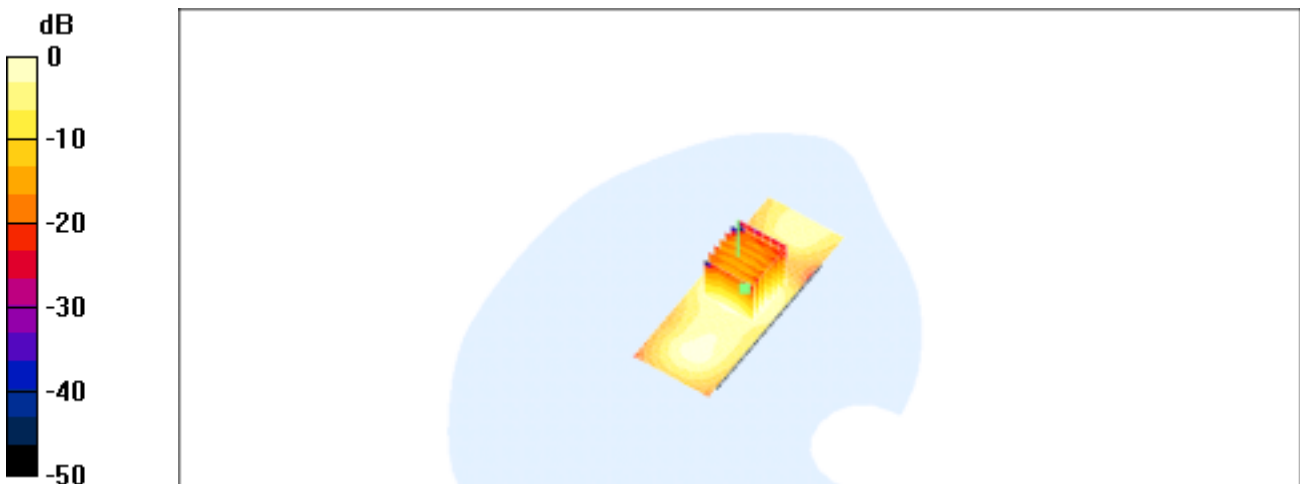
Peak SAR (extrapolated) = 0.139 W/kg

SAR(1 g) = 0.0665 mW/g; SAR(10 g) = 0.0327 mW/g

Reference Value = 5.37 V/m

Power Drift = -0.06 dB

Maximum value of SAR = 0.0697 mW/g



(802.11g & the antenna is in tip downward)

End-on position, lowest channel

Date/Time: 10/13/03 10:11:05

**DUT: USB Stick; Type: WN-250gi;
Program: 802.11g/b WLAN USB Stick**

Communication System: Wireless LAN; Frequency: 2412 MHz; Duty Cycle: 1:1
Medium: M2450 ($\sigma = 1.95826$ mho/m, $\epsilon_r = 51.7097$, $\rho = 1000$ kg/m³)
Phantom section: Flat Section

DASY4 Configuration:

- Probe: ET3DV6 - SN1759; ConvF(4.5, 4.5, 4.5); Calibrated: 2003/3/7
- Sensor-Surface: 4mm (Mechanical And Optical Surface Detection)
- Electronics: DAE3 Sn547; Calibrated: 2003/1/30
- Phantom: SAM 12; Type: SAM 4.0; Serial: TP:1150
- Measurement SW: DASY4, V4.1 Build 47; Postprocessing SW: SEMCAD, V1.6 Build 115

Vertical/Area Scan (41x51x1): Measurement grid: dx=15mm, dy=15mm

Reference Value = 1.05 V/m

Power Drift = 2 dB

Maximum value of SAR = 0.0369 mW/g

Vertical/Zoom Scan (7x7x7)/Cube 0: Measurement grid: dx=5mm, dy=5mm, dz=5mm

Peak SAR (extrapolated) = 0.0695 W/kg

SAR(1 g) = 0.033 mW/g; SAR(10 g) = 0.0157 mW/g

Reference Value = 1.05 V/m

Power Drift = 2 dB

Maximum value of SAR = 0.0353 mW/g



0 dB = 0.0353mW/g

(802.11g & the antenna is in tip downward)

End-on position, middle channel

Date/Time: 10/13/03 09:29:27

**DUT: USB Stick; Type: WN-250gi;
Program: 802.11g/b WLAN USB Stick**

Communication System: Wireless LAN; Frequency: 2437 MHz; Duty Cycle: 1:1
Medium: M2450 ($\sigma = 1.99146$ mho/m, $\epsilon_r = 51.6172$, $\rho = 1000$ kg/m³)
Phantom section: Flat Section

DASY4 Configuration:

- Probe: ET3DV6 - SN1759; ConvF(4.5, 4.5, 4.5); Calibrated: 2003/3/7
- Sensor-Surface: 4mm (Mechanical And Optical Surface Detection)
- Electronics: DAE3 Sn547; Calibrated: 2003/1/30
- Phantom: SAM 12; Type: SAM 4.0; Serial: TP:1150
- Measurement SW: DASY4, V4.1 Build 47; Postprocessing SW: SEMCAD, V1.6 Build 115

Vertical/Area Scan (41x51x1): Measurement grid: dx=15mm, dy=15mm

Reference Value = 0.904 V/m

Power Drift = 1 dB

Maximum value of SAR = 0.0451 mW/g

Vertical/Zoom Scan (7x7x7)/Cube 0: Measurement grid: dx=5mm, dy=5mm, dz=5mm

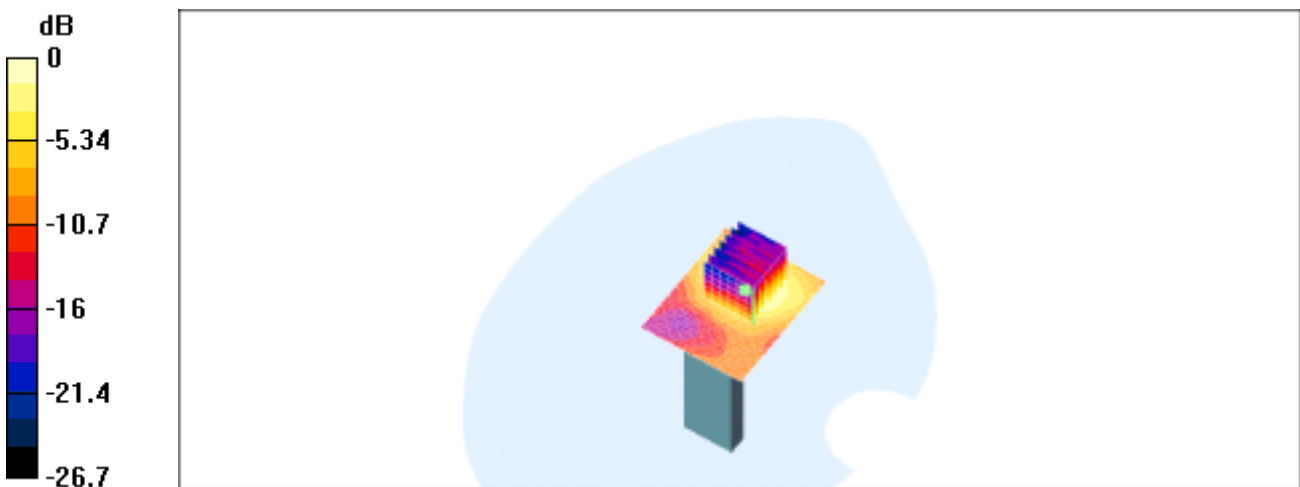
Peak SAR (extrapolated) = 0.087 W/kg

SAR(1 g) = 0.0402 mW/g; SAR(10 g) = 0.0191 mW/g

Reference Value = 0.904 V/m

Power Drift = 1 dB

Maximum value of SAR = 0.0436 mW/g



0 dB = 0.0436mW/g

(802.11g & the antenna is in tip downward)

End-on position, highest channel

Date/Time: 10/09/03 17:36:34

**DUT: USB Stick; Type: WN-250gi;
Program: 802.11g/b WLAN USB Stick**

Communication System: Wireless LAN; Frequency: 2462 MHz; Duty Cycle: 1:1
Medium: M2450 ($\sigma = 2.01798$ mho/m, $\epsilon_r = 51.4499$, $\rho = 1000$ kg/m³)
Phantom section: Flat Section

DASY4 Configuration:

- Probe: ET3DV6 - SN1759; ConvF(4.5, 4.5, 4.5); Calibrated: 2003/3/7
- Sensor-Surface: 4mm (Mechanical And Optical Surface Detection)
- Electronics: DAE3 Sn547; Calibrated: 2003/1/30
- Phantom: SAM 12; Type: SAM 4.0; Serial: TP:1150
- Measurement SW: DASY4, V4.1 Build 47; Postprocessing SW: SEMCAD, V1.6 Build 115

Vertical/Area Scan (41x51x1): Measurement grid: dx=15mm, dy=15mm

Reference Value = 1.08 V/m

Power Drift = -0.4 dB

Maximum value of SAR = 0.0505 mW/g

Vertical/Zoom Scan (7x7x7)/Cube 0: Measurement grid: dx=5mm, dy=5mm, dz=5mm

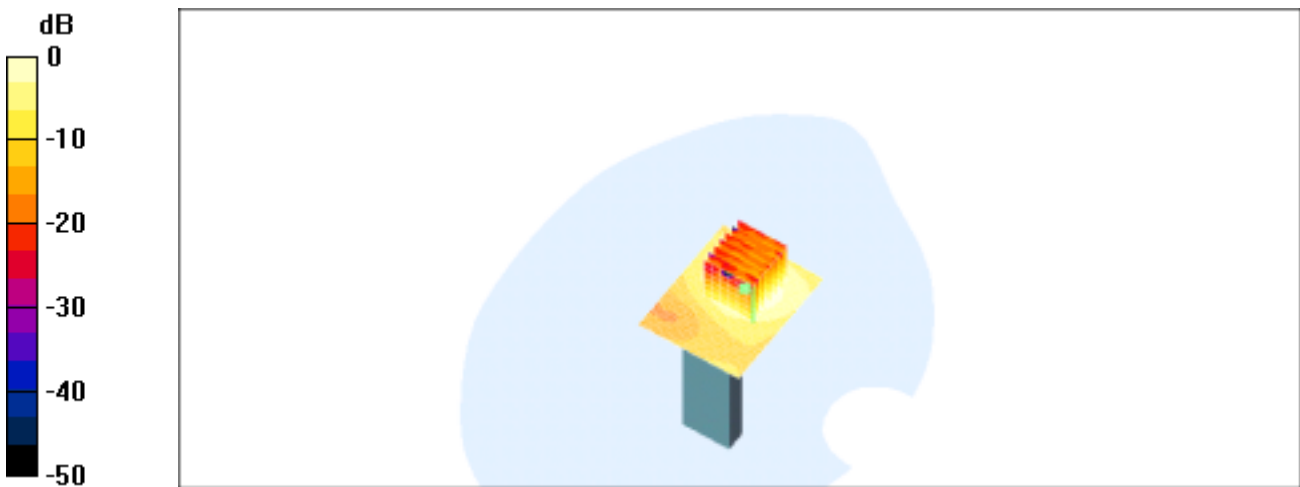
Peak SAR (extrapolated) = 0.101 W/kg

SAR(1 g) = 0.0456 mW/g; SAR(10 g) = 0.021 mW/g

Reference Value = 1.08 V/m

Power Drift = -0.4 dB

Maximum value of SAR = 0.0496 mW/g



0 dB = 0.0496mW/g

SAR System Performance Verification

DUT: Dipole 2450 MHz; Type: D2450V2; Serial: D2450V2 - SN:727
Program: 2003-10-07

Communication System: CW; Frequency: 2450 MHz; Duty Cycle: 1:1
Medium: M2450 ($\epsilon = 1.93224$ mho/m, $\mu_r = 51.5674$, $\rho = 1000$ kg/m³)
Phantom section: Flat Section

DASY4 Configuration:

- Probe: ET3DV6 - SN1759; ConvF(4.5, 4.5, 4.5); Calibrated: 2003/3/7
- Sensor-Surface: 4mm (Mechanical And Optical Surface Detection)
- Electronics: DAE3 Sn547; Calibrated: 2003/1/30
- Phantom: SAM 12; Type: SAM 4.0; Serial: TP:1150
- Measurement SW: DASY4, V4.1 Build 47; Postprocessing SW: SEMCAD, V1.6 Build 115

System Test/Area Scan (101x101x1): Measurement grid: dx=10mm, dy=10mm

Reference Value = 91.8 V/m

Power Drift = -0.009 dB

Maximum value of SAR = 15.1 mW/g

System Test/Zoom Scan (7x7x7)/Cube 0: Measurement grid: dx=5mm, dy=5mm, dz=5mm

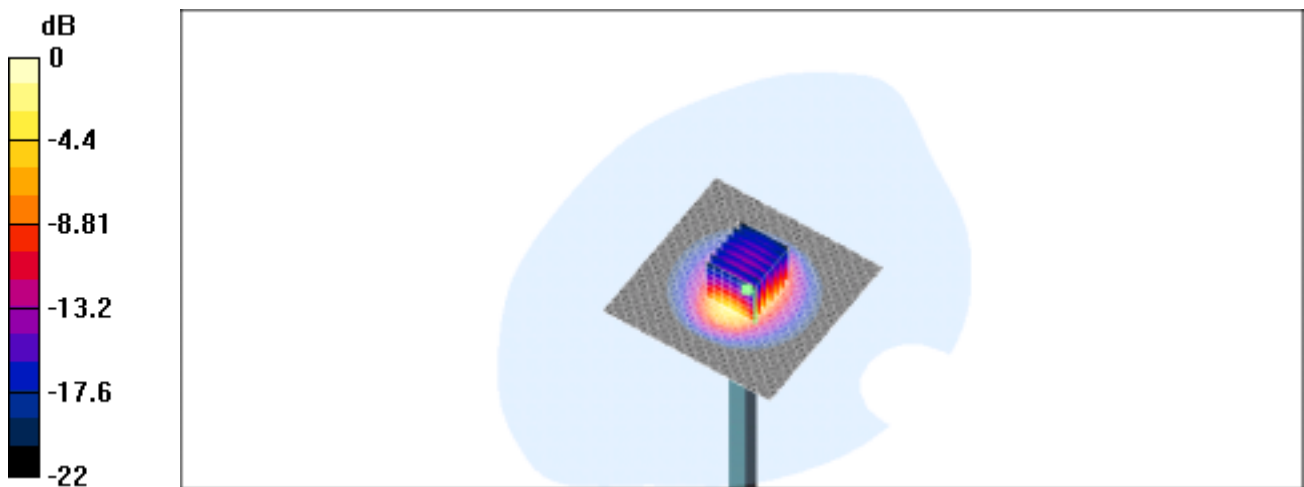
Peak SAR (extrapolated) = 29.7 W/kg

SAR(1 g) = 13.6 mW/g; SAR(10 g) = 6.12 mW/g

Reference Value = 91.8 V/m

Power Drift = -0.009 dB

Maximum value of SAR = 15.2 mW/g



0 dB = 15.2mW/g

Appendix Photographs of Test Setup



Fig.1 Photograph of the SAR measurement System



Fig.2 Photograph of the edge of the PC at 90° and at a distance of 1.5 cm from the base of the phantom and the antenna is in horizontal direction.

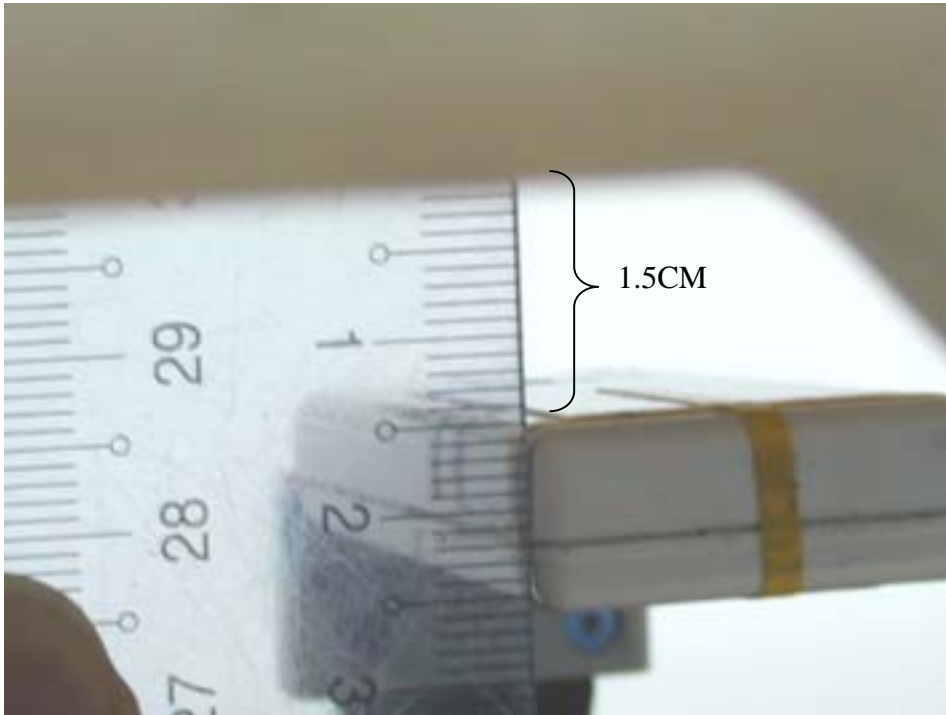


Fig.3 Photograph of the edge of the PC at 90° and at a distance of 1.5 cm from the base of the phantom and the antenna is in horizontal direction.



Fig.4 Photograph of the edge of the PC at 90° and at a distance of 1.5 cm from the base of the phantom and the antenna tip upward.

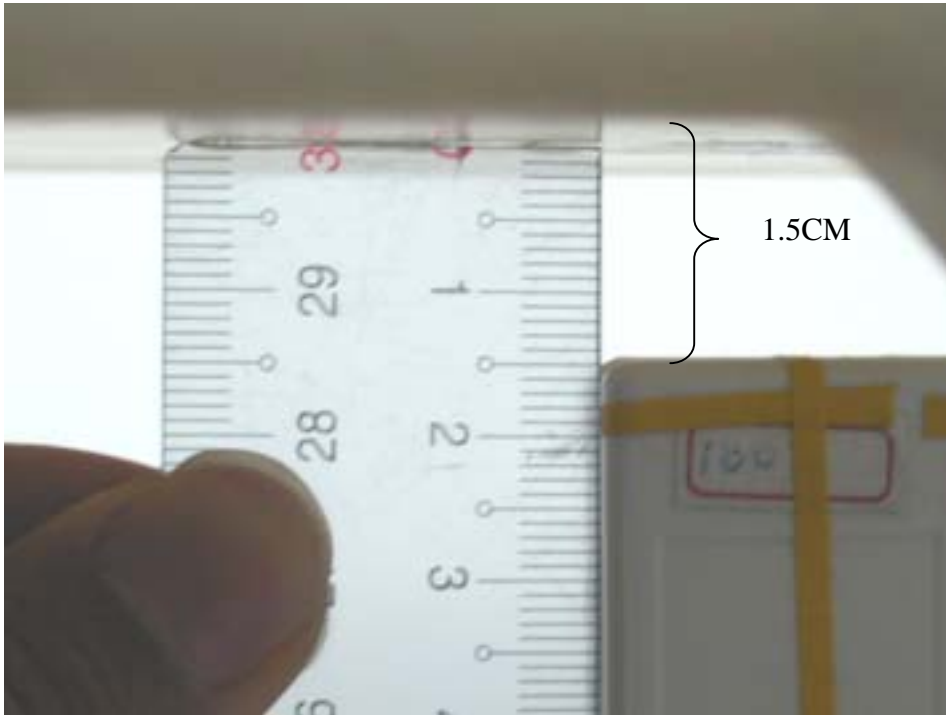


Fig.5 Photograph of the edge of the PC at 90° and at a distance of 1.5 cm from the base of the phantom and the antenna tip upward.

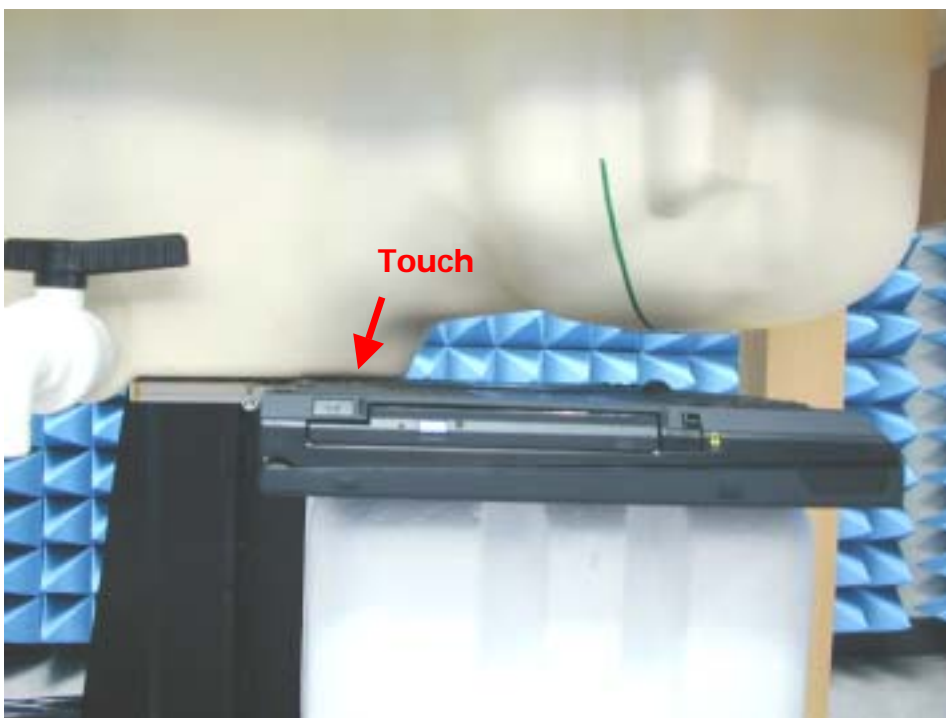


Fig.6 Photograph of the Bottom of the Pc is paralleled and at a distance of 0.0 cm from the base of the phantom, but 0.6 cm Spacing between

EUT & Planar Phantom, and the EUT antenna is in horizontal direction.

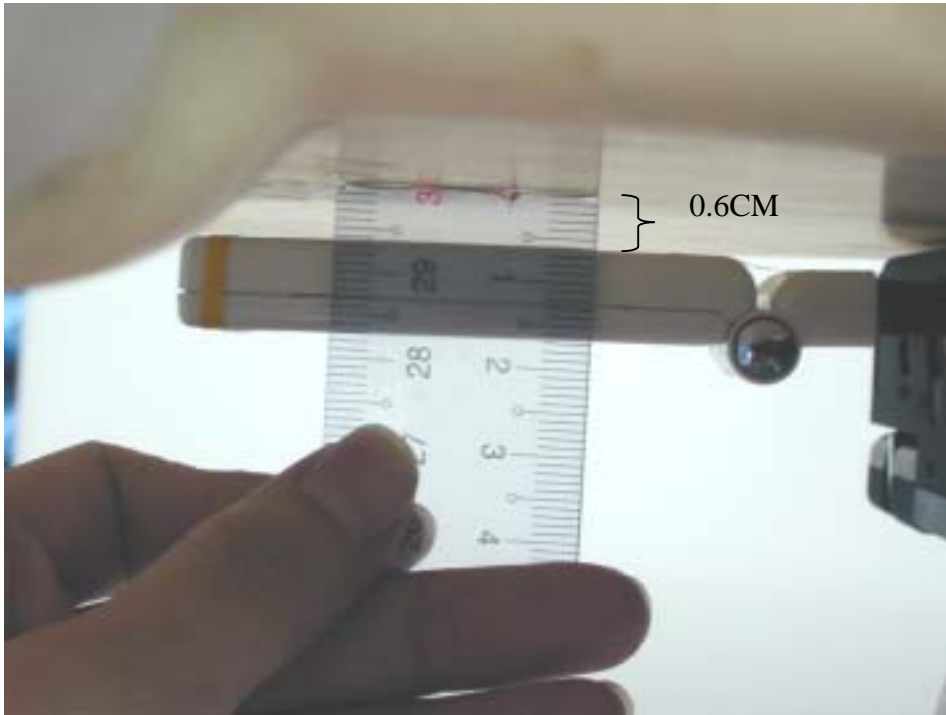


Fig.7 Photograph of the Bottom of the Pc is paralleled and at a distance of 0.0 cm from the base of the phantom, but 0.6 cm Spacing between EUT & Planar Phantom, and the EUT antenna is in horizontal direction.



Fig.8 Photograph of the Bottom of the Pc is paralleled and at a distance of 0.0 cm from the base of the phantom, but 0.6 cm Spacing between

EUT & Planar Phantom, and the EUT antenna tip downward.

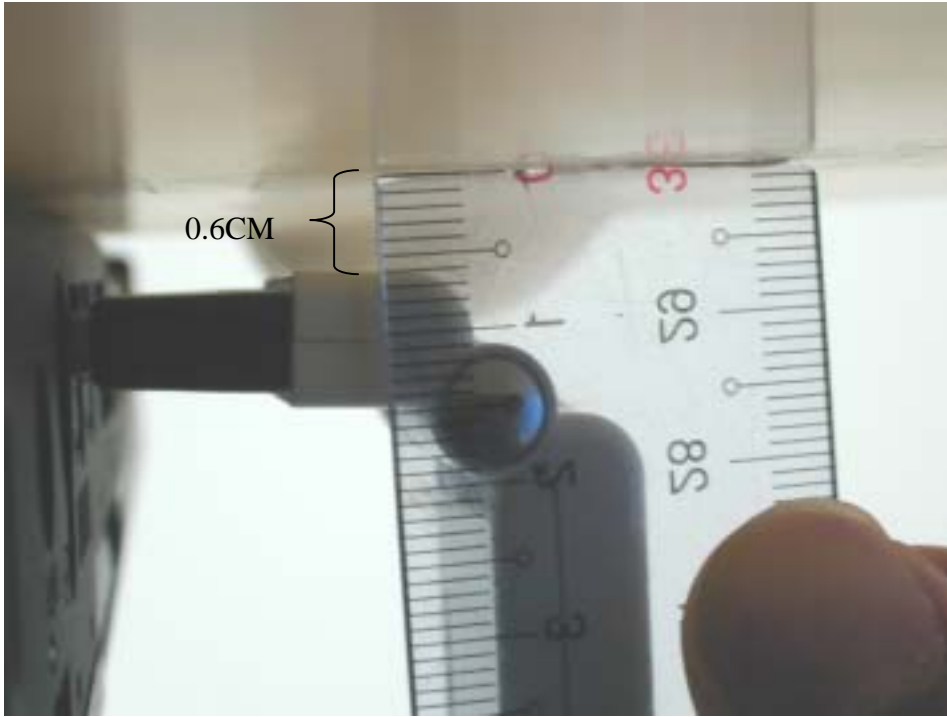


Fig.9 Photograph of the Bottom of the Pc is paralleled and at a distance of 0.0 cm from the base of the phantom, but 0.6 cm Spacing between EUT & Planar Phantom, and the EUT antenna tip downward.

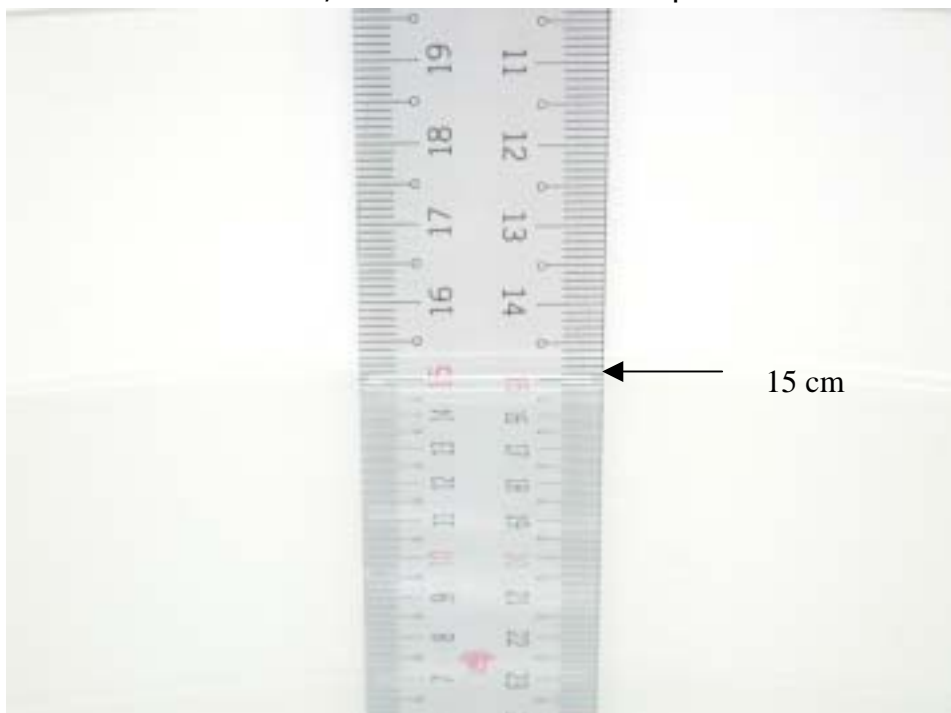


Fig.10 Photograph of the Tissue Simulant Fluid liquid depth 15cm

Photographs of the EUT



Fig.11 Front view of device



Fig.12 Back view of device



Fig.13 edge of the EUT at 90°



Fig.14 edge of the EUT at 90°



Fig.15 With IBM ThinkPad T30 Host Laptop PC

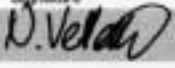
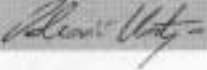


Fig.16 With IBM ThinkPad T30 Host Laptop PC

Probe Calibration certificate

**Calibration Laboratory of
Schmid & Partner
Engineering AG**
Zeughausstrasse 43, 8004 Zurich, Switzerland

Client **SGS (Auden)**

CALIBRATION CERTIFICATE																															
Object(s)	ET3DV6 - SN:1759																														
Calibration procedure(s)	QA CAL-01.v2 Calibration procedure for dosimetric E-field probes																														
Calibration date:	March 7, 2003																														
Condition of the calibrated item	In Tolerance (according to the specific calibration document)																														
<p>This calibration statement documents traceability of M&TE used in the calibration procedures and conformity of the procedures with the ISO/IEC 17025 international standard.</p> <p>All calibrations have been conducted in the closed laboratory facility: environment temperature 22 +/- 2 degrees Celsius and humidity < 75%.</p> <p>Calibration Equipment used (M&TE critical for calibration)</p> <table border="1"> <thead> <tr> <th>Model Type</th> <th>ID #</th> <th>Cal Date</th> <th>Scheduled Calibration</th> </tr> </thead> <tbody> <tr> <td>RF generator HP 8684C</td> <td>US3642U01700</td> <td>4-Aug-99 (in house check Aug-02)</td> <td>in house check: Aug-05</td> </tr> <tr> <td>Power sensor E4412A</td> <td>MY41495277</td> <td>8-Mar-02</td> <td>Mar-03</td> </tr> <tr> <td>Power sensor HP 8481A</td> <td>MY41092160</td> <td>18-Sep-02</td> <td>Sep-03</td> </tr> <tr> <td>Power meter EPM E4419B</td> <td>GB41293874</td> <td>13-Sep-02</td> <td>Sep-03</td> </tr> <tr> <td>Network Analyzer HP 8753E</td> <td>US36432426</td> <td>3-May-00</td> <td>in house check: May 03</td> </tr> <tr> <td>Fliuke Process Calibrator Type 702</td> <td>SN: 6295803</td> <td>3-Sep-01</td> <td>Sep-03</td> </tr> </tbody> </table>				Model Type	ID #	Cal Date	Scheduled Calibration	RF generator HP 8684C	US3642U01700	4-Aug-99 (in house check Aug-02)	in house check: Aug-05	Power sensor E4412A	MY41495277	8-Mar-02	Mar-03	Power sensor HP 8481A	MY41092160	18-Sep-02	Sep-03	Power meter EPM E4419B	GB41293874	13-Sep-02	Sep-03	Network Analyzer HP 8753E	US36432426	3-May-00	in house check: May 03	Fliuke Process Calibrator Type 702	SN: 6295803	3-Sep-01	Sep-03
Model Type	ID #	Cal Date	Scheduled Calibration																												
RF generator HP 8684C	US3642U01700	4-Aug-99 (in house check Aug-02)	in house check: Aug-05																												
Power sensor E4412A	MY41495277	8-Mar-02	Mar-03																												
Power sensor HP 8481A	MY41092160	18-Sep-02	Sep-03																												
Power meter EPM E4419B	GB41293874	13-Sep-02	Sep-03																												
Network Analyzer HP 8753E	US36432426	3-May-00	in house check: May 03																												
Fliuke Process Calibrator Type 702	SN: 6295803	3-Sep-01	Sep-03																												
Calibrated by:	Name Nico Verbert	Function Technician	Signature 																												
Approved by:	Katja Pokovic	Laboratory Director																													
Date issued: March 7, 2003																															
<p>This calibration certificate is issued as an intermediate solution until the accreditation process (based on ISO/IEC 17025 International Standard) for Calibration Laboratory of Schmid & Partner Engineering AG is completed.</p>																															

Schmid & Partner Engineering AG

s p e a g

Zeughausstrasse 43, 8004 Zurich, Switzerland
Phone +41 1 245 9700, Fax +41 1 245 9778
info@speag.com, <http://www.speag.com>

Probe ET3DV6

SN:1759

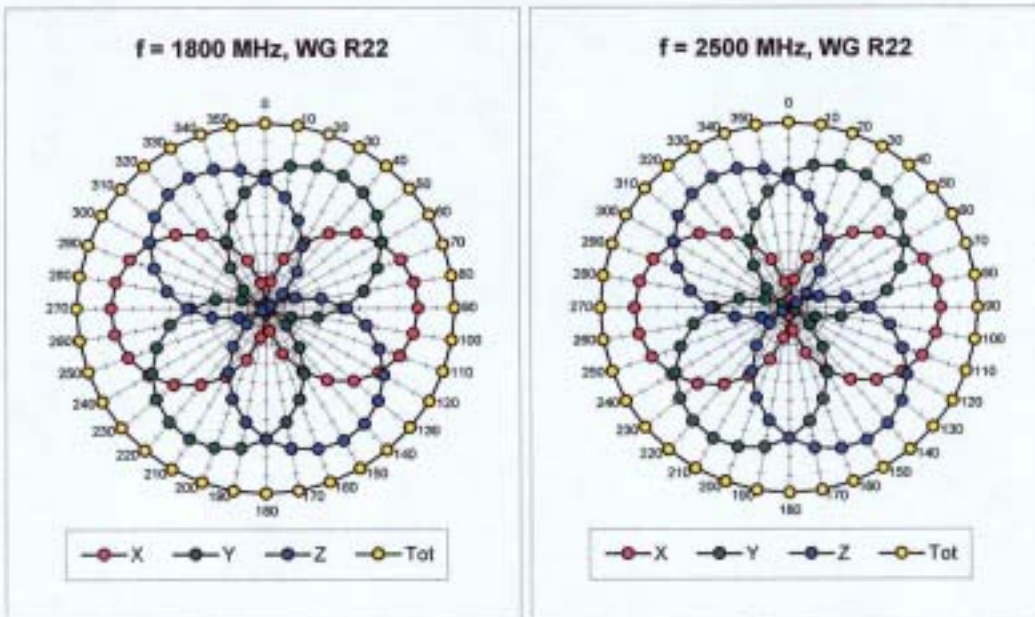
Manufactured: November 12, 2002
Last calibration: March 7, 2003

Calibrated for DASY Systems

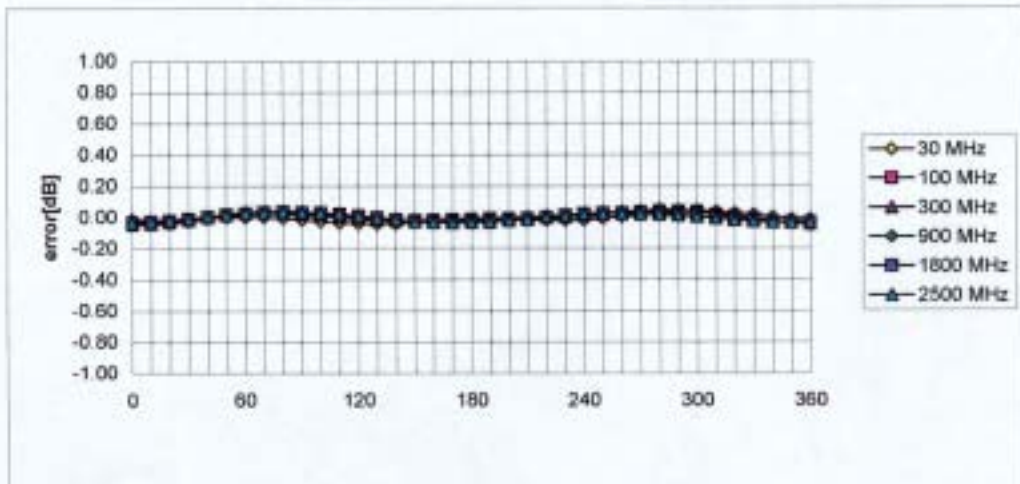
(Note: non-compatible with DASY2 system!)

ET3DV6 SN:1759

March 7, 2003



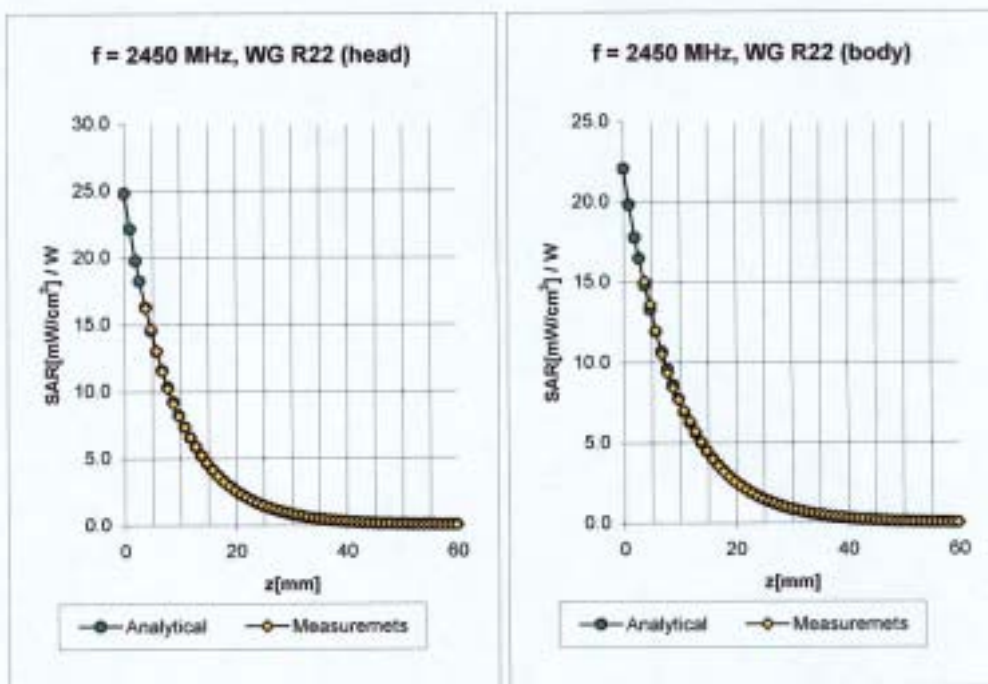
Isotropy Error (ϕ), $\theta = 0^\circ$



ET3DV6 SN:1759

March 7, 2003

Conversion Factor Assessment



2450	Head	MHz	$\epsilon_r = 39.2 \pm 5\%$	$\sigma = 1.80 \pm 5\%$ mho/m
	ConvF X		$5.0 \pm 8.9\%$ (k=2)	Boundary effect:
	ConvF Y		$5.0 \pm 8.9\%$ (k=2)	Alpha 0.98
	ConvF Z		$5.0 \pm 8.9\%$ (k=2)	Depth 1.95
2450	Body	MHz	$\epsilon_r = 52.7 \pm 5\%$	$\sigma = 1.95 \pm 5\%$ mho/m
	ConvF X		$4.5 \pm 8.9\%$ (k=2)	Boundary effect:
	ConvF Y		$4.5 \pm 8.9\%$ (k=2)	Alpha 1.01
	ConvF Z		$4.5 \pm 8.9\%$ (k=2)	Depth 1.80

Uncertainty Analysis

DASY4 Uncertainty Budget According to IEEE P1528 [1]								
Error Description	Uncertainty value	Prob. Dist.	Div.	(c_i) 1g	(c_i) 10g	Std. Unc. (1g)	Std. Unc. (10g)	(v_i) v_{eff}
Measurement System								
Probe Calibration	±4.8%	N	1	1	1	±4.8%	±4.8%	∞
Axial Isotropy	±4.7%	R	$\sqrt{3}$	0.7	0.7	±1.9%	±1.9%	∞
Hemispherical Isotropy	±9.6%	R	$\sqrt{3}$	0.7	0.7	±3.9%	±3.9%	∞
Boundary Effects	±1.0%	R	$\sqrt{3}$	1	1	±0.6%	±0.6%	∞
Linearity	±4.7%	R	$\sqrt{3}$	1	1	±2.7%	±2.7%	∞
System Detection Limits	±1.0%	R	$\sqrt{3}$	1	1	±0.6%	±0.6%	∞
Readout Electronics	±1.0%	N	1	1	1	±1.0%	±1.0%	∞
Response Time	±0.8%	R	$\sqrt{3}$	1	1	±0.5%	±0.5%	∞
Integration Time	±2.6%	R	$\sqrt{3}$	1	1	±1.5%	±1.5%	∞
RF Ambient Conditions	±3.0%	R	$\sqrt{3}$	1	1	±1.7%	±1.7%	∞
Probe Positioner	±0.4%	R	$\sqrt{3}$	1	1	±0.2%	±0.2%	∞
Probe Positioning	±2.9%	R	$\sqrt{3}$	1	1	±1.7%	±1.7%	∞
Max. SAR Eval.	±1.0%	R	$\sqrt{3}$	1	1	±0.6%	±0.6%	∞
Test Sample Related								
Device Positioning	±2.9%	N	1	1	1	±2.9%	±2.9%	875
Device Holder	±3.6%	N	1	1	1	±3.6%	±3.6%	5
Power Drift	±5.0%	R	$\sqrt{3}$	1	1	±2.9%	±2.9%	∞
Phantom and Setup								
Phantom Uncertainty	±4.0%	R	$\sqrt{3}$	1	1	±2.3%	±2.3%	∞
Liquid Conductivity (target)	±5.0%	R	$\sqrt{3}$	0.64	0.43	±1.8%	±1.2%	∞
Liquid Conductivity (meas.)	±2.5%	N	1	0.64	0.43	±1.6%	±1.1%	∞
Liquid Permittivity (target)	±5.0%	R	$\sqrt{3}$	0.6	0.49	±1.7%	±1.4%	∞
Liquid Permittivity (meas.)	±2.5%	N	1	0.6	0.49	±1.5%	±1.2%	∞
Combined Std. Uncertainty						±10.3%	±10.0%	331
Expanded STD Uncertainty						±20.6%	±20.1%	

Phantom description

**Schmid & Partner
 Engineering AG**

Zeughausstrasse 43, 8004 Zurich, Switzerland, Phone +41 1 245 97 00, Fax +41 1 245 97 79

Certificate of conformity / First Article Inspection

Item	SAM Twin Phantom V4.0
Type No	QD 000 P40 CA
Series No	TP-1150 and higher
Manufacturer / Origin	Unterse Composites Hauptstr. 69 CH-8559 Fruthwilen Switzerland

Tests

The series production process used allows the limitation to test of first articles. Complete tests were made on the pre-series Type No. QD 000 P40 AA, Serial No. TP-1001 and on the series first article Type No. QD 000 P40 BA, Serial No. TP-1006. Certain parameters have been retested using further series units (called samples).

Test	Requirement	Details	Units tested
Shape	Compliance with the geometry according to the CAD model.	IT1S CAD File (*)	First article, Samples
Material thickness	Compliant with the requirements according to the standards	2mm +/- 0.2mm in specific areas	First article, Samples
Material parameters	Dielectric parameters for required frequencies	200 MHz - 3 GHz Relative permittivity < 5 Loss tangent < 0.05.	Material sample TP 104-5
Material resistivity	The material has been tested to be compatible with the liquids defined in the standards	Liquid type HSL 1800 and others according to the standard.	Pre-series, First article

Standards

- [1] CENELEC EN 50361
- [2] IEEE P1528-200x draft 6.5
- [3] IEC PT 62209 draft 0.9
- (*) The IT1S CAD file is derived from [2] and is also within the tolerance requirements of the shapes of [1] and [3].

Conformity

Based on the sample tests above, we certify that this item is in compliance with the uncertainty requirements of SAR measurements specified in standard [1] and draft standards [2] and [3].

Date 28.02.2002

Signature / Stamp

F. Rombult

**Schmid & Partner
 Engineering AG**

**Zeughausstrasse 43, CH-8004 Zurich
 Tel. +41 1 245 97 00, Fax +41 1 245 97 79**

Johannes Kappeler

System Validation from Original equipment supplier **SPEAG Schmid & Partner**

Date/Time: 03/05/03 16:17:40

Test Laboratory: SPEAG, Zurich, Switzerland
File Name: SN727_SN3013_M2450_050303.da4

DUT: Dipole 2450 MHz; Serial: D2450V2 - SN727
Program: Dipole Calibration

Communication System: CW-2450; Frequency: 2450 MHz; Duty Cycle: 1:1
Medium: Muscle 2450 MHz; ($\sigma = 2.05$ mho/m, $\epsilon_r = 51.05$, $\rho = 1000$ kg/m³)
Phantom section: Flat Section

DASY4 Configuration:

- Probe: ES3DV2 - SN3013; ConvF(4.2, 4.2, 4.2); Calibrated: 1/19/2003
- Sensor-Surface: 4mm (Mechanical Surface Detection)
- Electronics: DAE3 - SN411; Calibrated: 1/16/2003
- Phantom: SAM with CRP - TP1006; Type: SAM 4.0; Serial: TP:1006
- Measurement SW: DASY4, V4.1 Build 25; Postprocessing SW: SEMCAD, V1.6 Build 105

Pin = 250 mW; d = 10 mm/Area Scan (81x81x1): Measurement grid: dx=15mm, dy=15mm
Pin = 250 mW; d = 10 mm/Zoom Scan (7x7x7)/Cube 0: Measurement grid: dx=5mm, dy=5mm, dz=5mm
Reference Value = 89.7 V/m
Peak SAR = 27.6 W/kg
SAR(1 g) = 13.7 mW/g; SAR(10 g) = 6.16 mW/g
Power Drift = 0.007 dB

