

HT2000W wifi module installation instruction

HT2000W wifi module photo

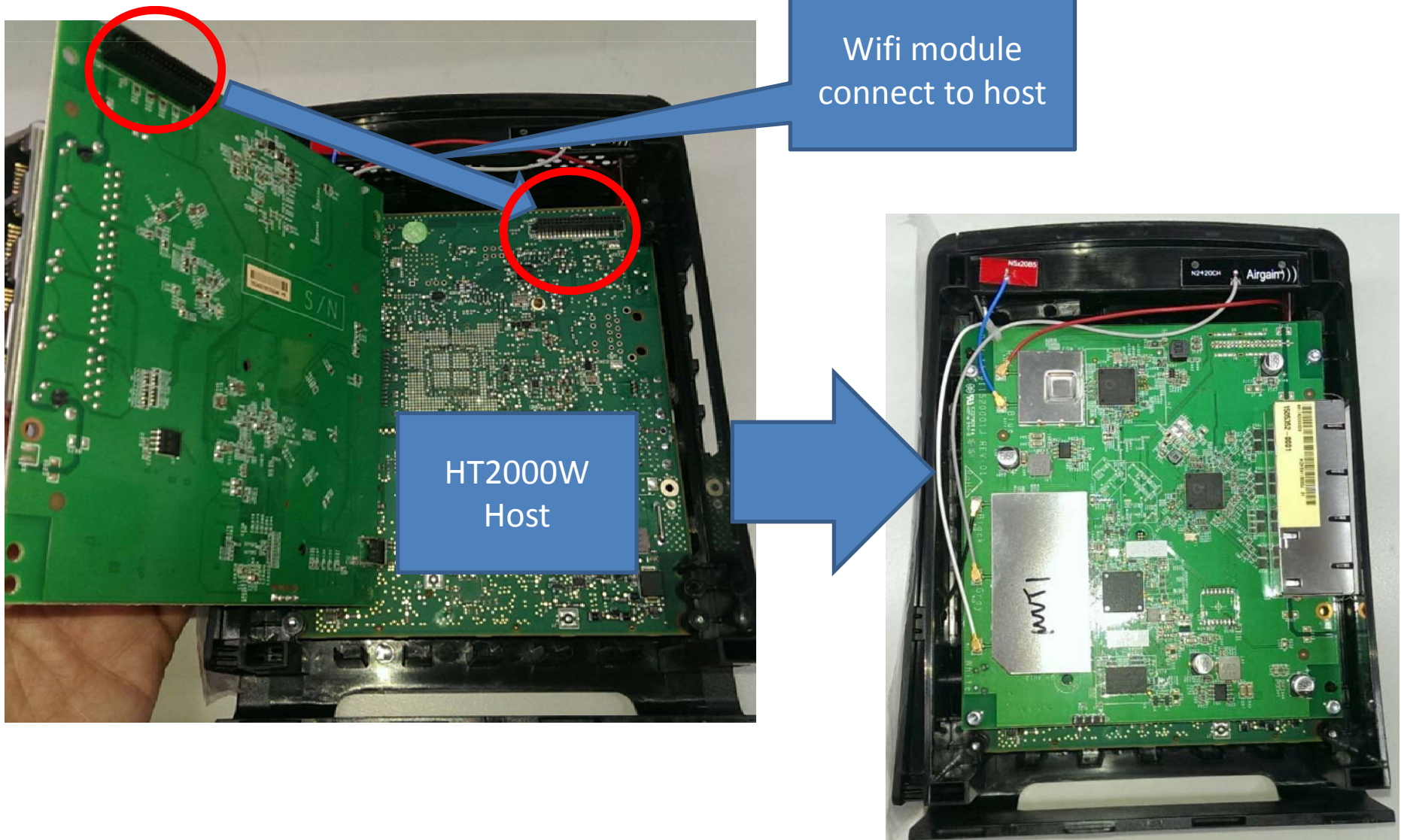


4 LAN I/O ports

Here to connect host



How to install HT2000W wifi module to Host



Detail information

- HT2000W wifi module connects to Host modem board by using 40-pin board to Board connector. The connector pin definition is below. They include:
 - 12V & GND
 - some GPIOs pins.
 - Ethernet 4 differential pairs connection.

