

Measurement Report for Device

Device Under Test Properties

Model, Manufacturer	Dimensions [mm]	IMEI	DUT Type
Device,	360.0 x 265.0 x 20.0		Laptop

Exposure Conditions

Phantom Section	Position, Test Distance [mm]	Frequency [MHz]	Conversion Factor
5G	Bottom of Laptop, 2.00	6985.0	1.0

Hardware Setup

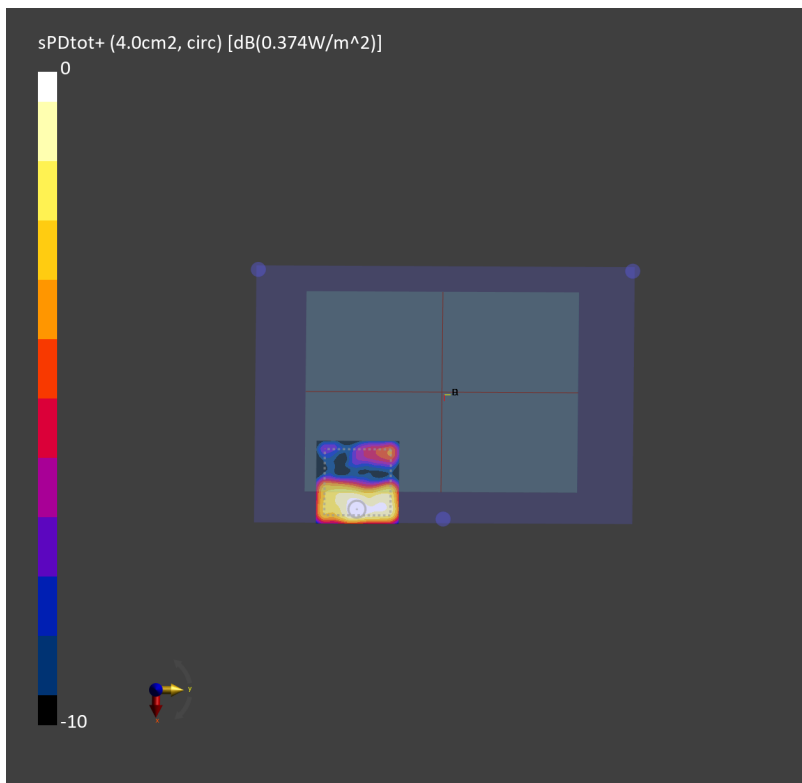
Phantom	Medium	Probe, Calibration Date	DAE, Calibration Date
mmWave - 1044	Air -	EUmmWV4 - SN9461_F1-55GHz, 2023-10-12	DAE4 Sn1805, 2023-05-16

Scans Setup

Scan Type	5G Scan
Grid Extents [mm]	105.0 x 105.0
Grid Steps [lambda]	0.0625 x 0.0625
Sensor Surface [mm]	2.0

Measurement Results

Date	2023-11-08
Avg. Area [cm ²]	4.00
psPDn+ [W/m ²]	0.354
psPDtot+ [W/m ²]	0.374
H _{max} [A/m]	0.043
E _{max} [V/m]	14.7
max _(Stot) [W/m ²]	0.485
iPDn	0.928
Power Drift [dB]	0.08



Measurement Report for Device

Device Under Test Properties

Model, Manufacturer	Dimensions [mm]	IMEI	DUT Type
Device,	360.0 x 265.0 x 20.0		Laptop

Exposure Conditions

Phantom Section	Position, Test Distance [mm]	Frequency [MHz]	Conversion Factor
5G	Bottom of Laptop, 2.00	6165.0	1.0

Hardware Setup

Phantom	Medium	Probe, Calibration Date	DAE, Calibration Date
mmWave - 1044	Air -	EUmmWV3 - SN9424_F1-55GHz, 2023-03-21	DAE4 Sn656, 2023-01-23

Scans Setup

Scan Type	5G Scan
Grid Extents [mm]	105.0 x 105.0
Grid Steps [lambda]	0.0625 x 0.0625
Sensor Surface [mm]	2.0

Measurement Results

Date	2023-11-23
Avg. Area [cm ²]	4.00
psPDn+ [W/m ²]	1.17
psPDtot+ [W/m ²]	1.47
H _{max} [A/m]	0.083
E _{max} [V/m]	25.9
max _(Stot) [W/m ²]	1.94
Power Drift [dB]	0.07

