

Measurement Report for Device

Device Under Test Properties

Model, Manufacturer	Dimensions [mm]	IMEI	DUT Type
Device,	70.0 x 50.0 x 8.0		5G Verification Source

Exposure Conditions

Phantom Section	Position, Test Distance [mm]	Frequency [MHz]	Conversion Factor
5G	FRONT, 10.00	10000.0	1.0

Hardware Setup

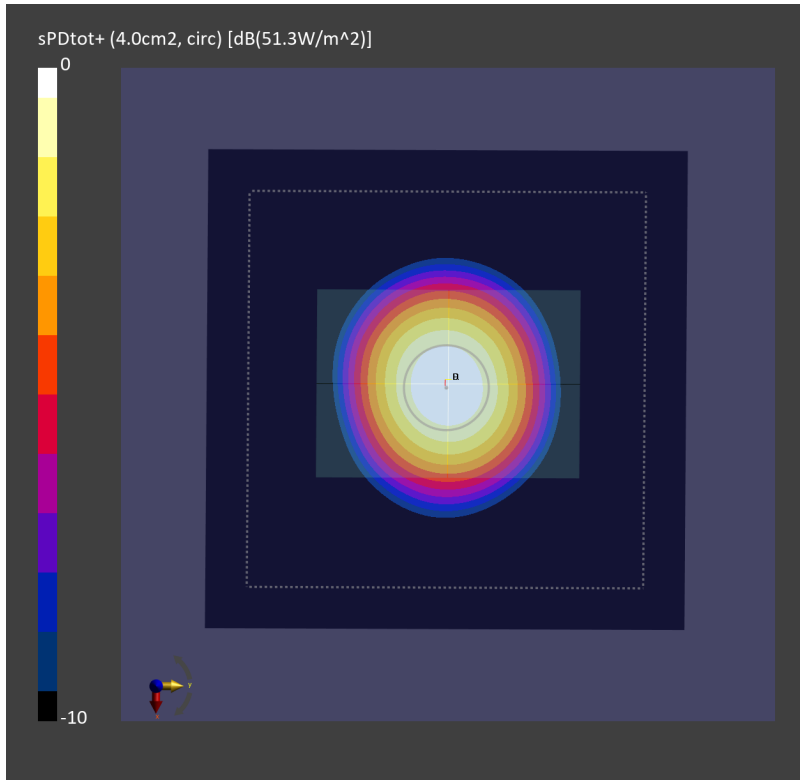
Phantom	Medium	Probe, Calibration Date	DAE, Calibration Date
mmWave - 1044	Air -	EUmmWV4 - SN9461_F1-55GHz, 2023-10-12	DAE4 Sn1805, 2023-05-16

Scans Setup

Scan Type	5G Scan
Grid Extents [mm]	120.0 x 120.0
Grid Steps [lambda]	0.25 x 0.25
Sensor Surface [mm]	10.0

Measurement Results

Date	2023-11-08
Avg. Area [cm ²]	4.00
psPDn+ [W/m ²]	51.2
psPDtot+ [W/m ²]	51.3
H _{max} [A/m]	0.420
E _{max} [V/m]	148
max _(Stot) [W/m ²]	60.0
Power Drift [dB]	-0.00



Measurement Report for Device

Device Under Test Properties

Model, Manufacturer	Dimensions [mm]	IMEI	DUT Type
Device,	70.0 x 50.0 x 8.0		5G Verification Source

Exposure Conditions

Phantom Section	Position, Test Distance [mm]	Frequency [MHz]	Conversion Factor
5G	FRONT, 10.00	10000.0	1.0

Hardware Setup

Phantom	Medium	Probe, Calibration Date	DAE, Calibration Date
mmWave - 1044	Air -	EUmmWV3 - SN9424_F1-55GHz, 2023-03-21	DAE4 Sn656, 2023-01-23

Scans Setup

Scan Type	5G Scan
Grid Extents [mm]	120.0 x 120.0
Grid Steps [lambda]	0.25 x 0.25
Sensor Surface [mm]	10.0

Measurement Results

Date	2023-11-22
Avg. Area [cm ²]	4.00
psPDn+ [W/m ²]	48.6
psPDtot+ [W/m ²]	55.1
H _{max} [A/m]	0.429
E _{max} [V/m]	165
max _(Stot) [W/m ²]	65.7
Power Drift [dB]	0.03

