

Plots of System Verification

Appendix A. Plots of System Verification

The plots for system verification are shown as follows.

Plots of System Verification

Measurement Report

S01 System Check_H2450_230625

Device under Test Properties

Model, Manufacturer	Dimensions [mm]	IMEI	DUT Type
Dipole	10.0 x 10.0 x 300.0		

Exposure Conditions

Phantom Section, TSL	Position, Test Distance [mm]	Band	Group, UID	Frequency [MHz], Channel Number	Conversion Factor	TSL Conductivity [S/m]	TSL Permittivity
Flat,	,			2450.0,	7.5	1.83	39.9

Hardware Setup

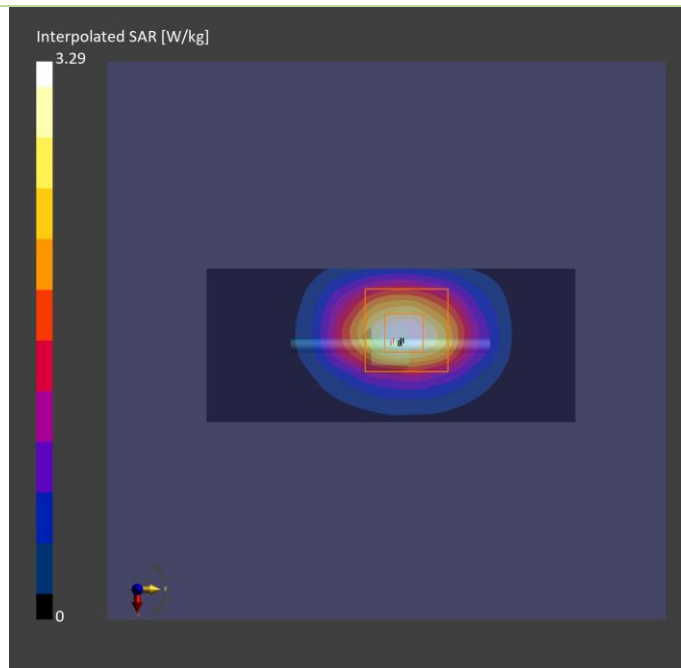
Phantom	TSL, Measured Date	Probe, Calibration Date	DAE, Calibration Date
ELI V5.0 (20deg probe tilt) - 1245	H06T27N10 , 2023-Jun-25	EX3DV4 - SN7554, 2022-07-28	DAE4 Sn1762, 2022-12-08

Scan Setup

	Area Scan	Zoom Scan
Grid Extents [mm]	48.0 x 96.0	30.0 x 30.0 x 30.0
Grid Steps [mm]	12.0 x 12.0	5.0 x 5.0 x 1.5
Sensor Surface [mm]	3.0	1.4

Measurement Results

	Area Scan	Zoom Scan
Date	2023-06-25	2023-06-25
psSAR1g [W/kg]	2.55	2.58
psSAR10g [W/kg]	1.23	1.21
Power Drift [dB]	-0.01	-0.01



Plots of System Verification

Measurement Report

S02 System Check_H5250_230626

Device under Test Properties

Model, Manufacturer	Dimensions [mm]	IMEI	DUT Type
Dipole,	50.0 x 10.0 x 8.0		5250

Exposure Conditions

Phantom Section, TSL	Position, Test Distance [mm]	Band	Group, UID	Frequency [MHz], Channel Number	Conversion Factor	TSL Conductivity [S/m]	TSL Permittivity
Flat,	,		CW, 0--	5250.0, 0	5.14	4.48	36.8

Hardware Setup

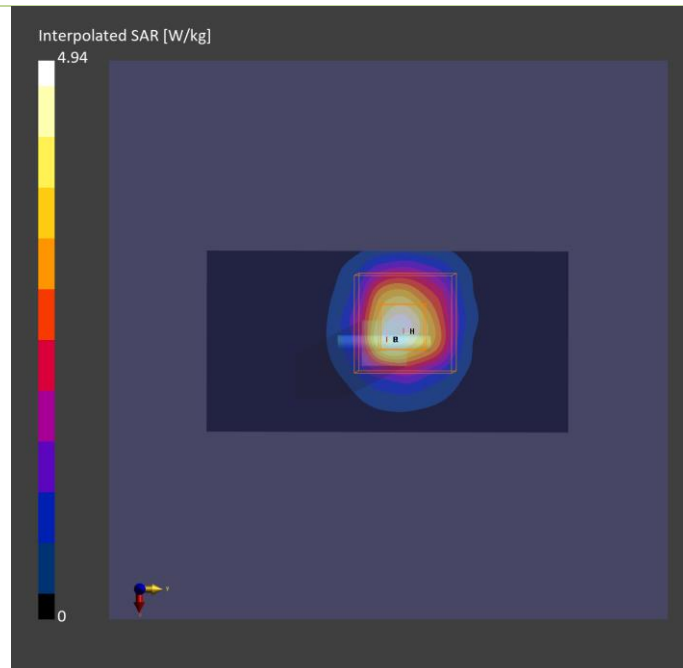
Phantom	TSL, Measured Date	Probe, Calibration Date	DAE, Calibration Date
ELI V5.0 (20deg probe tilt) - 1245	H51T72N10 , 2023-Jun-26	EX3DV4 - SN7554, 2022-07-28	DAE4 Sn1762, 2022-12-08

Scan Setup

	Area Scan	Zoom Scan
Grid Extents [mm]	40.0 x 80.0	22.0 x 22.0 x 22.0
Grid Steps [mm]	10.0 x 10.0	4.0 x 4.0 x 1.4
Sensor Surface [mm]	3.0	1.4

Measurement Results

	Area Scan	Zoom Scan
Date	2023-06-26	2023-06-26
psSAR1g [W/kg]	3.49	4.13
psSAR10g [W/kg]	1.12	1.18
Power Drift [dB]	-0.02	-0.07



Plots of System Verification

Measurement Report

S03 System Check_H5600_230627

Device under Test Properties

Model, Manufacturer	Dimensions [mm]	IMEI	DUT Type
Device,	10.0 x 10.0 x 300.0		

Exposure Conditions

Phantom Section, TSL	Position, Test Distance [mm]	Band	Group, UID	Frequency [MHz], Channel Number	Conversion Factor	TSL Conductivity [S/m]	TSL Permittivity
Flat, HSL	,		CW, 0--	5600.0, 0	4.61	5.06	36.1

Hardware Setup

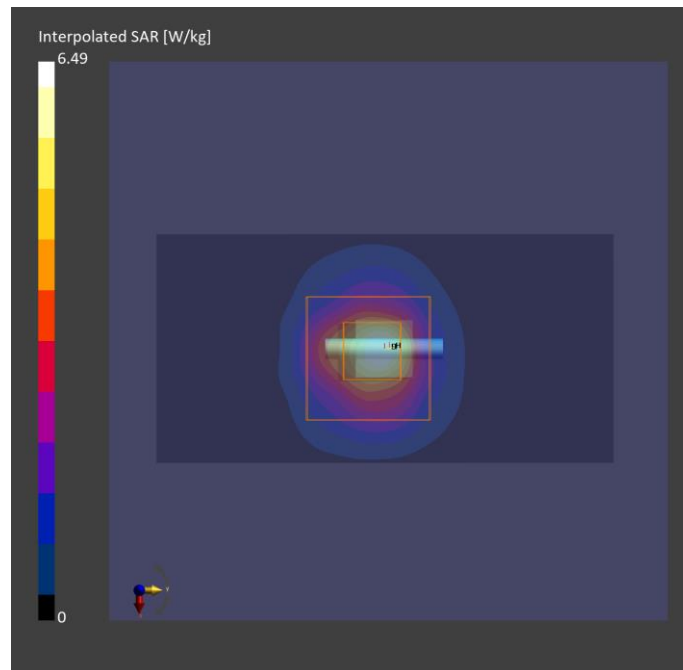
Phantom	TSL, Measured Date	Probe, Calibration Date	DAE, Calibration Date
ELI V5.0 (20deg probe tilt) - 1245	H51T72N10, 2023-Jun-27	EX3DV4 - SN7554, 2022-07-28	DAE4 Sn1762, 2022-12-08

Scan Setup

	Area Scan	Zoom Scan
Grid Extents [mm]	40.0 x 80.0	24.0 x 24.0 x 22.0
Grid Steps [mm]	10.0 x 10.0	4.0 x 4.0 x 1.4
Sensor Surface [mm]	3.0	1.4

Measurement Results

	Area Scan	Zoom Scan
Date	2023-06-27	2023-06-27
psSAR1g [W/kg]	4.22	4.31
psSAR10g [W/kg]	1.24	1.30
Power Drift [dB]	-0.03	0.07



Plots of System Verification

Measurement Report

S04 System Check_H5800_230628

Device under Test Properties

Model, Manufacturer	Dimensions [mm]	IMEI	DUT Type
Device,	10.0 x 10.0 x 300.0		S

Exposure Conditions

Phantom Section, TSL	Position, Test Distance [mm]	Band	Group, UID	Frequency [MHz], Channel Number	Conversion Factor	TSL Conductivity [S/m]	TSL Permittivity
Flat, HSL	,		CW, 0--	5800.0, 0	4.79	5.37	35.8

Hardware Setup

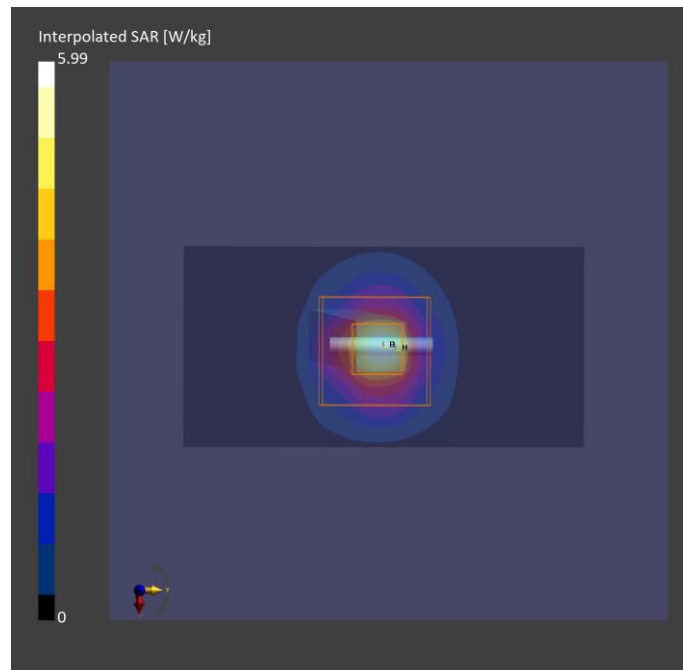
Phantom	TSL, Measured Date	Probe, Calibration Date	DAE, Calibration Date
ELI V5.0 (20deg probe tilt) - 1245	H51T72N10, 2023-Jun-28	EX3DV4 - SN7554, 2022-07-28	DAE4 Sn1762, 2022-12-08

Scan Setup

	Area Scan	Zoom Scan
Grid Extents [mm]	40.0 x 80.0	24.0 x 24.0 x 22.0
Grid Steps [mm]	10.0 x 10.0	4.0 x 4.0 x 1.4
Sensor Surface [mm]	3.0	1.4

Measurement Results

	Area Scan	Zoom Scan
Date	2023-06-28	2023-06-28
psSAR1g [W/kg]	3.81	3.98
psSAR10g [W/kg]	1.09	1.13
Power Drift [dB]	0.01	0.04



Plots of System Verification

Measurement Report

S05 System Check_H5800_230629

Device under Test Properties

Model, Manufacturer	Dimensions [mm]	IMEI	DUT Type
Device,	10.0 x 10.0 x 300.0		

Exposure Conditions

Phantom Section, TSL	Position, Test Distance [mm]	Band	Group, UID	Frequency [MHz], Channel Number	Conversion Factor	TSL Conductivity [S/m]	TSL Permittivity
Flat, HSL	,		CW, 0--	5800.0, 0	4.79	5.19	36.4

Hardware Setup

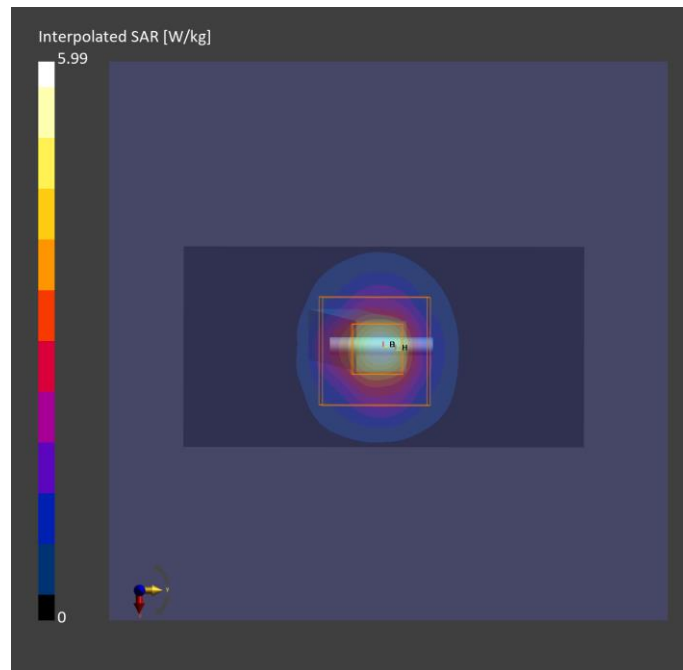
Phantom	TSL, Measured Date	Probe, Calibration Date	DAE, Calibration Date
ELI V5.0 (20deg probe tilt) - 1245	H51T72N10, 2023-Jun-29	EX3DV4 - SN7554, 2022-07-28	DAE4 Sn1762, 2022-12-08

Scan Setup

	Area Scan	Zoom Scan
Grid Extents [mm]	40.0 x 80.0	24.0 x 24.0 x 22.0
Grid Steps [mm]	10.0 x 10.0	4.0 x 4.0 x 1.4
Sensor Surface [mm]	3.0	1.4

Measurement Results

	Area Scan	Zoom Scan
Date	2023-06-29	2023-06-29
psSAR1g [W/kg]	3.97	4.06
psSAR10g [W/kg]	1.13	1.18
Power Drift [dB]	0.01	0.11



Plots of System Verification

Measurement Report S06 System Check_H2450_230701 Device under Test Properties

Model, Manufacturer	Dimensions [mm]	IMEI	DUT Type
Dipole	10.0 x 10.0 x 300.0		2450

Exposure Conditions

Phantom Section, TSL	Position, Test Distance [mm]	Band	Group, UID	Frequency [MHz], Channel Number	Conversion Factor	TSL Conductivity [S/m]	TSL Permittivity
Flat,	,			2450.0,	7.5	1.77	41.5

Hardware Setup

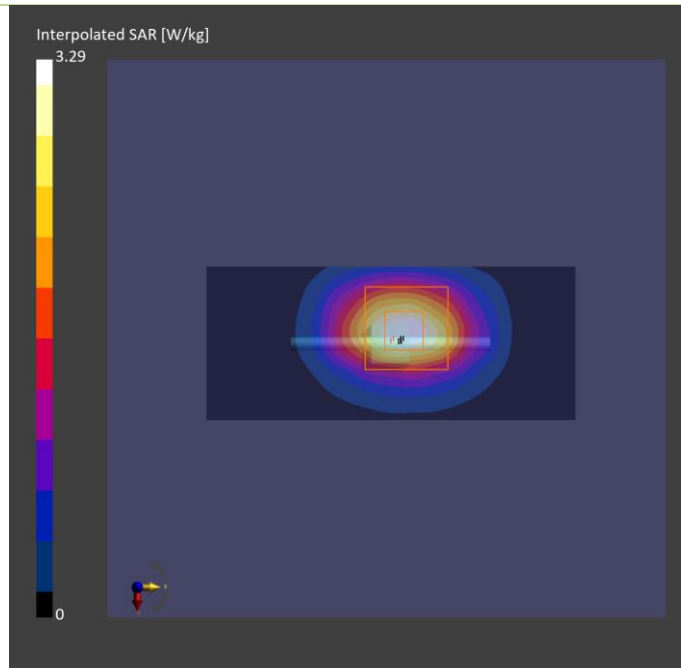
Phantom	TSL, Measured Date	Probe, Calibration Date	DAE, Calibration Date
ELI V5.0 (20deg probe tilt) - 1245	H06T27N10 , 2023-Jul-01	EX3DV4 - SN7554, 2022-07-28	DAE4 Sn1762, 2022-12-08

Scan Setup

	Area Scan	Zoom Scan
Grid Extents [mm]	48.0 x 96.0	30.0 x 30.0 x 30.0
Grid Steps [mm]	12.0 x 12.0	5.0 x 5.0 x 1.5
Sensor Surface [mm]	3.0	1.4

Measurement Results

	Area Scan	Zoom Scan
Date	2023-07-01	2023-07-01
psSAR1g [W/kg]	2.55	2.57
psSAR10g [W/kg]	1.23	1.19
Power Drift [dB]	-0.01	-0.01



Plots of System Verification

Measurement Report

S07 System Check_H6.5GHz_230630

Device under Test Properties

Model, Manufacturer	Dimensions [mm]	IMEI	DUT Type
Device	50.0 x 10.0 x 8.0		

Exposure Conditions

Phantom Section, TSL	Position, Test Distance [mm]	Band	Group, UID	Frequency [MHz], Channel Number	Conversion Factor	TSL Conductivity [S/m]	TSL Permittivity
Flat, HSL				6500	5.65	5.88	34.9

Hardware Setup

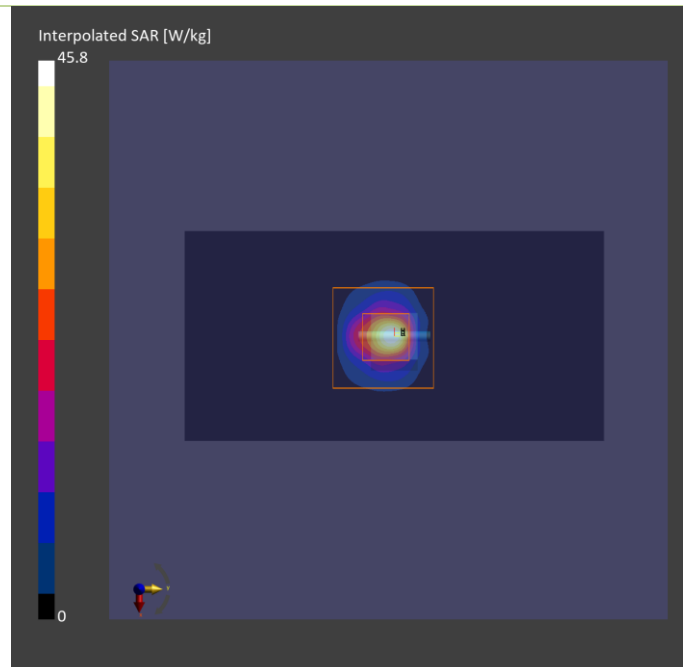
Phantom	TSL, Measured Date	Probe, Calibration Date	DAE, Calibration Date
ELI V5.0 (20deg probe tilt) - 1245	H51T72N10, 2023-Jun-30	EX3DV4 - SN7554, 2022-07-28	DAE4 Sn1762, 2022-12-08

Scan Setup

	Area Scan	Zoom Scan
Grid Extents [mm]	45.0 x 90.0	22.0 x 22.0 x 22.0
Grid Steps [mm]	7.5 x 7.5	3.4 x 3.4 x 1.4
Sensor Surface [mm]	3.0	1.4

Measurement Results

	Area Scan	Zoom Scan
Date	2023-06-30	2023-06-30
psSAR1g [W/kg]	26.0	29.6
psSAR10g [W/kg]	4.98	5.34
psAPD (1.0cm2, sq) [W/m2]		296
psAPD (4.0cm2, sq) [W/m2]		137
Power Drift [dB]	-0.17	-0.07



Plots of System Verification

Measurement Report

S07 PD_System Check_10 GHz_2023.06.30

Device under Test Properties

Model, Manufacturer	Dimensions [mm]	IMEI	DUT Type
SPEAG, 5G Verification Source	100.0 x 100.0 x 170.0	SN: 1025	Verification Source 10 GHz

Exposure Conditions

Phantom Section	Position, Test Distance [mm]	Band	Group, UID	Frequency [MHz], Channel Number	Conversion Factor
5G Air	FRONT, 10.00	Validation band	CW, -0-	10000.0, 10000	1.0

Hardware Setup

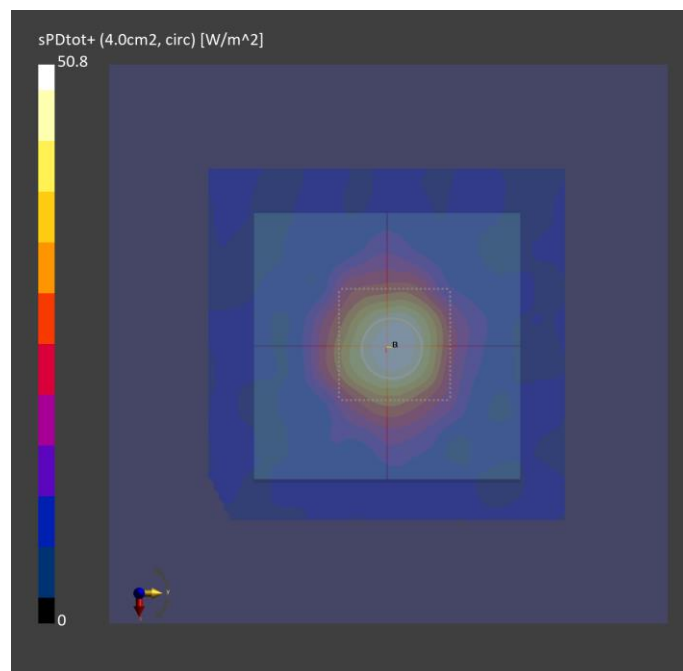
Phantom	Medium	Probe, Calibration Date	DAE, Calibration Date
mmWave- 1030	-Air-	EUmmWV4 - SN9438_F1-55GHz, 2022-07-18	DAE4 Sn1762, 2022-12-08

Scan Setup

	5G Scan
Grid Extents [mm]	60.0 x 60.0
Grid Steps [lambda]	0.125 x 0.125
Sensor Surface [mm]	10.0

Measurement Results

	5G Scan
Date	2023-06-30
Avg. Area [cm ²]	4.00
psPDn+ [W/m ²]	50.5
psPDtot+ [W/m ²]	50.8
psPDmod+ [W/m ²]	51.1
E _{max} [V/m]	144
Power Drift [dB]	-0.02



Appendix B. Plots of Measurement

The SAR plots for highest measured SAR in each exposure configuration, wireless mode and frequency band combination are shown as follows.

Plots of Measurement

Measurement Report

P01 WLAN2.4G_802.11b_Bottom Side_5mm_Ch1_Mode 2T1S_Ant 0+1

Device under Test Properties

Model, Manufacturer	Dimensions [mm]	IMEI	DUT Type
BARR-WTW-P23030848	240.0 x 50.0 x 75.0		

Exposure Conditions

Phantom Section, TSL	Position, Test Distance [mm]	Band	Group, UID	Frequency [MHz], Channel Number	Conversion Factor	TSL Conductivity [S/m]	TSL Permittivity
Flat, -	Bottom Side, 5.00	WLAN 2.4GHz	WLAN, 10012-CAB	2412.0, 1	7.5	1.80	40.0

Hardware Setup

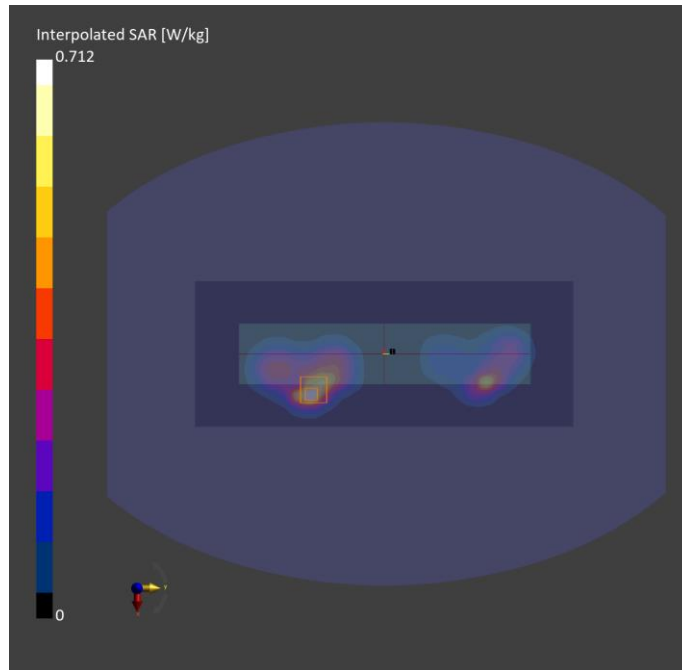
Phantom	TSL, Measured Date	Probe, Calibration Date	DAE, Calibration Date
ELI V5.0 (20deg probe tilt) - 1245	H06T27N10 , 2023-Jun-25	EX3DV4 - SN7554, 2022-07-28	DAE4 Sn1762, 2022-12-08

Scan Setup

	Area Scan	Zoom Scan
Grid Extents [mm]	120.0 x 312.0	30.0 x 30.0 x 30.0
Grid Steps [mm]	12.0 x 12.0	5.0 x 5.0 x 5.0
Sensor Surface [mm]	3.0	1.4

Measurement Results

	Area Scan	Zoom Scan
Date	2023-06-25	2023-06-25
psSAR1g [W/kg]	0.534	0.574
psSAR10g [W/kg]	0.265	0.262
Power Drift [dB]	0.62	-0.02
M2/M1 [%]		44.9
Dist 3dB Peak [mm]		7.7



Plots of Measurement

Measurement Report

P02 WLAN5.3G_802.11ac VHT160_Bottom Side_5mm_Ch50_Mode 2T2S_Ant 0+1

Device under Test Properties

Model, Manufacturer	Dimensions [mm]	IMEI	DUT Type
BARR-WTW-P23030848	240.0 x 50.0 x 75.0		

Exposure Conditions

Phantom Section, TSL	Position, Test Distance [mm]	Band	Group, UID	Frequency [MHz], Channel Number	Conversion Factor	TSL Conductivity [S/m]	TSL Permittivity
Flat,	Bottom Side, 5.00	WLAN 5GHz	WLAN, 10554-AAE	5250.000, 50	5.14	4.48	36.8

Hardware Setup

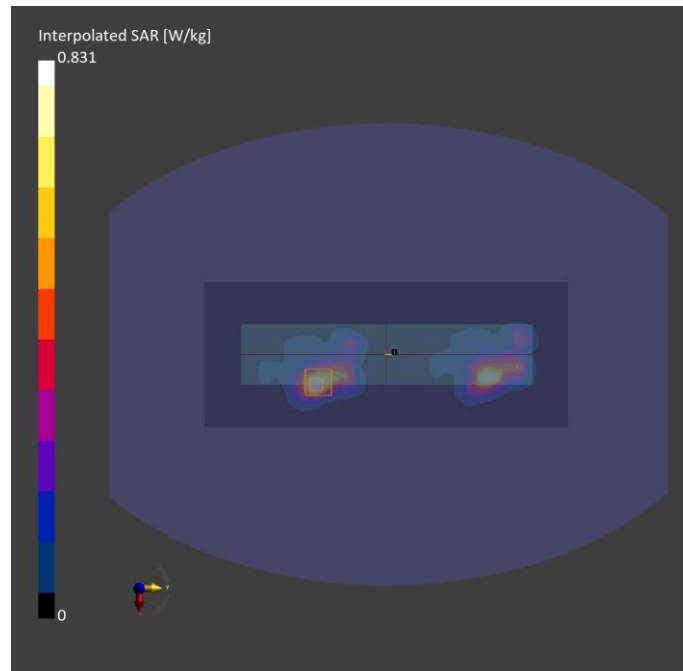
Phantom	TSL, Measured Date	Probe, Calibration Date	DAE, Calibration Date
ELI V5.0 (20deg probe tilt) - 1245	H51T72N10 , 2023-Jun-26	EX3DV4 - SN7554, 2022-07-28	DAE4 Sn1762, 2022-12-08

Scan Setup

	Area Scan	Zoom Scan
Grid Extents [mm]	120.0 x 300.0	24.0 x 24.0 x 22.0
Grid Steps [mm]	10.0 x 10.0	4.0 x 4.0 x 1.4
Sensor Surface [mm]	3.0	1.4

Measurement Results

	Area Scan	Zoom Scan
Date	2023-06-26	2023-06-26
psSAR1g [W/kg]	0.608	0.645
psSAR10g [W/kg]	0.232	0.235
Power Drift [dB]	-0.05	-0.09
M2/M1 [%]		65.1
Dist 3dB Peak [mm]		8.4



Plots of Measurement

Measurement Report

P03 WLAN5.6G_802.11a_Bottom Side_5mm_Ch100_Mode 2T1S_Ant 0+1

Device under Test Properties

Model, Manufacturer	Dimensions [mm]	IMEI	DUT Type
, BARR-WTW-P23030848	240.0 x 50.0 x 75.0		

Exposure Conditions

Phantom Section, TSL	Position, Test Distance [mm]	Band	Group, UID	Frequency [MHz], Channel Number	Conversion Factor	TSL Conductivity [S/m]	TSL Permittivity
Flat,	Bottom Side, 5.00	WLAN 5GHz	WLAN, 10062-CAE	5500.0, 100	4.61	4.93	36.3

Hardware Setup

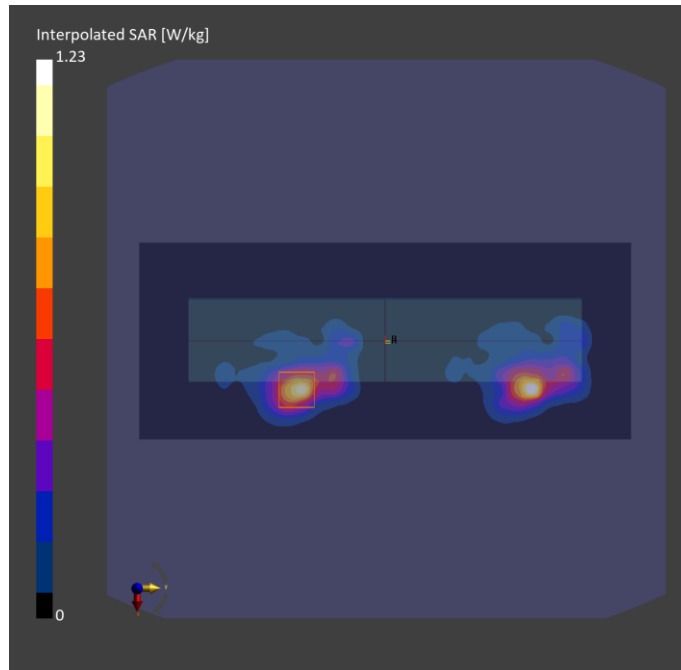
Phantom	TSL, Measured Date	Probe, Calibration Date	DAE, Calibration Date
ELI V5.0 (20deg probe tilt) - 1245	H51T72N10 , 2023-Jun-27	EX3DV4 - SN7554, 2022-07-28	DAE4 Sn1762, 2022-12-08

Scan Setup

	Area Scan	Zoom Scan
Grid Extents [mm]	120.0 x 300.0	24.0 x 24.0 x 22.0
Grid Steps [mm]	10.0 x 10.0	4.0 x 4.0 x 1.4
Sensor Surface [mm]	3.0	1.4

Measurement Results

	Area Scan	Zoom Scan
Date	2023-06-27	2023-06-27
psSAR1g [W/kg]	0.800	0.756
psSAR10g [W/kg]	0.279	0.246
Power Drift [dB]	0.11	0.03
M2/M1 [%]		61.0
Dist 3dB Peak [mm]		7.9



Plots of Measurement

Measurement Report

P04 WLAN5.8G_802.11ac VHT80_Bottom Side_5mm_Ch155_Mode 2T2S_Ant 0+1

Device under Test Properties

Model, Manufacturer	Dimensions [mm]	IMEI	DUT Type
, BARR-WTW-P23030848	240.0 x 50.0 x 75.0		

Exposure Conditions

Phantom Section, TSL	Position, Test Distance [mm]	Band	Group, UID	Frequency [MHz], Channel Number	Conversion Factor	TSL Conductivity [S/m]	TSL Permittivity
Flat,	Bottom Side, 5.00	WLAN 5GHz	WLAN, 10544-AAD	5775.0, 155	4.79	5.34	35.9

Hardware Setup

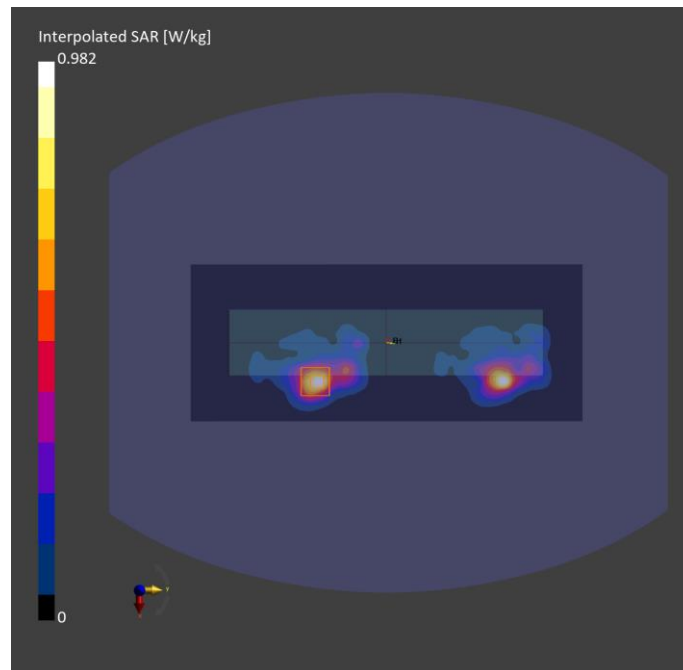
Phantom	TSL, Measured Date	Probe, Calibration Date	DAE, Calibration Date
ELI V5.0 (20deg probe tilt) - 1245	H51T72N10 , 2023-Jun-28	EX3DV4 - SN7554, 2022-07-28	DAE4 Sn1762, 2022-12-08

Scan Setup

	Area Scan	Zoom Scan
Grid Extents [mm]	120.0 x 300.0	24.0 x 24.0 x 22.0
Grid Steps [mm]	10.0 x 10.0	4.0 x 4.0 x 1.4
Sensor Surface [mm]	3.0	1.4

Measurement Results

	Area Scan	Zoom Scan
Date	2023-06-28	2023-06-28
psSAR1g [W/kg]	0.691	0.756
psSAR10g [W/kg]	0.248	0.246
Power Drift [dB]	-0.04	-0.12
M2/M1 [%]		58.7
Dist 3dB Peak [mm]		7.2



Plots of Measurement

Measurement Report for P05 WLAN5.9G_802.11ac VHT160_Bottom Side_5mm_Ch163_Mode 2T2S_Ant 0+1 Device under Test Properties

Model, Manufacturer	Dimensions [mm]	IMEI	DUT Type
, BARR-WTW-P23030848	240.0 x 50.0 x 75.0		

Exposure Conditions

Phantom Section, TSL	Position, Test Distance [mm]	Band	Group, UID	Frequency [MHz], Channel Number	Conversion Factor	TSL Conductivity [S/m]	TSL Permittivity
Flat,	Bottom Side, 5.00	WLAN 5GHz	WLAN, 10554-AAE	5815.0, 163	4.79	5.22	36.4

Hardware Setup

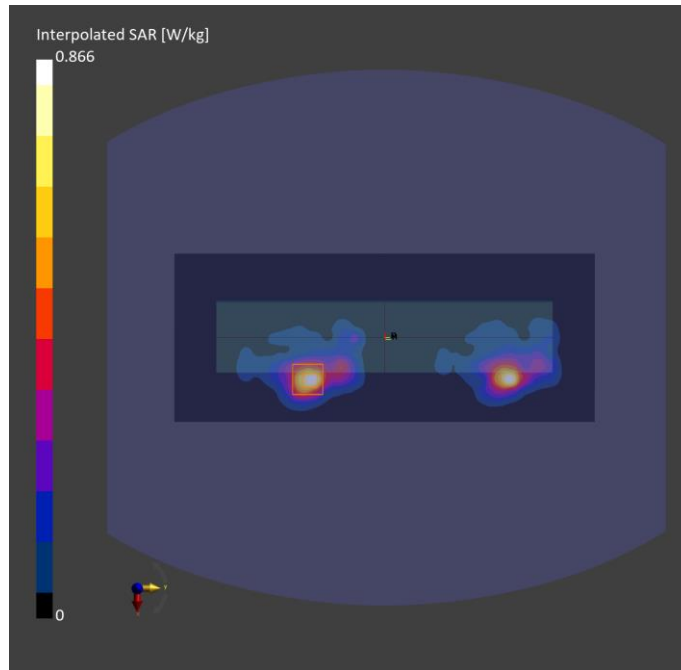
Phantom	TSL, Measured Date	Probe, Calibration Date	DAE, Calibration Date
ELI V5.0 (20deg probe tilt) - 1245	H51T72N10 , 2023-Jun-29	EX3DV4 - SN7554, 2022-07-28	DAE4 Sn1762, 2022-12-08

Scan Setup

	Area Scan	Zoom Scan
Grid Extents [mm]	120.0 x 300.0	24.0 x 24.0 x 22.0
Grid Steps [mm]	10.0 x 10.0	4.0 x 4.0 x 1.4
Sensor Surface [mm]	3.0	1.4

Measurement Results

	Area Scan	Zoom Scan
Date	2023-06-29	2023-06-29
psSAR1g [W/kg]	0.616	0.704
psSAR10g [W/kg]	0.219	0.230
Power Drift [dB]	-0.08	0.11
M2/M1 [%]		58.7
Dist 3dB Peak [mm]		7.2



Plots of Measurement

Measurement Report

P06 BT_BDR_Bottom Side_5mm_Ch0_Ant 1

Device under Test Properties

Model, Manufacturer	Dimensions [mm]	IMEI	DUT Type
BARR-WTW-P23030848	240.0 x 50.0 x 75.0		

Exposure Conditions

Phantom Section, TSL	Position, Test Distance [mm]	Band	Group, UID	Frequency [MHz], Channel Number	Conversion Factor	TSL Conductivity [S/m]	TSL Permittivity
Flat,	Bottom Side, 5.00	ISM 2.4 GHz Band	Bluetooth, 10032-CAA	2402.000, 0	7.5	1.73	41.6

Hardware Setup

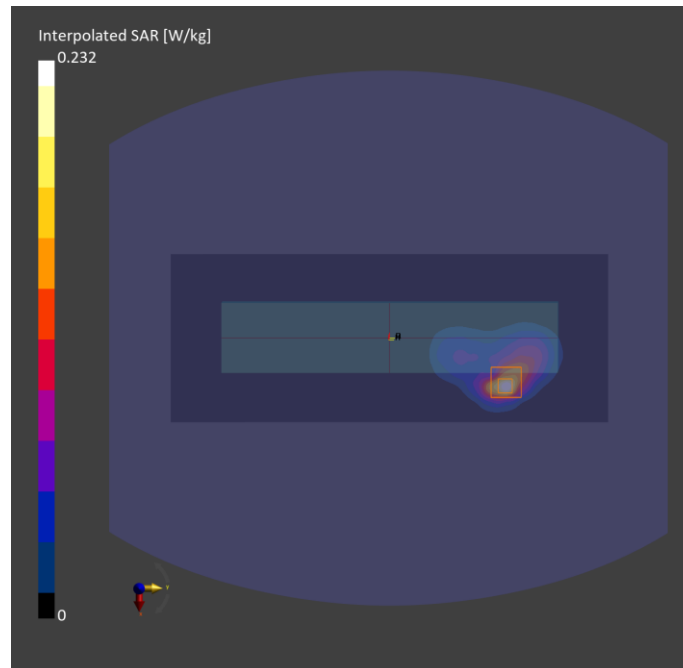
Phantom	TSL, Measured Date	Probe, Calibration Date	DAE, Calibration Date
ELI V5.0 (20deg probe tilt) - 1245	H06T27N10 , 2023-Jul-01	EX3DV4 - SN7554, 2022-07-28	DAE4 Sn1762, 2022-12-08

Scan Setup

	Area Scan	Zoom Scan
Grid Extents [mm]	120.0 x 312.0	30.0 x 30.0 x 30.0
Grid Steps [mm]	12.0 x 12.0	5.0 x 5.0 x 5.0
Sensor Surface [mm]	3.0	1.4

Measurement Results

	Area Scan	Zoom Scan
Date	2023-07-01	2023-07-01
psSAR1g [W/kg]	0.171	0.174
psSAR10g [W/kg]	0.079	0.077
Power Drift [dB]	0.04	0.04
M2/M1 [%]		42.1
Dist 3dB Peak [mm]		7.3



Plots of Measurement

Measurement Report

P07 WLAN6G_802.11ax HE160_Bottom Side_5mm_Ch15_Mode 2T2S_Ant 0+1

Device under Test Properties

Model, Manufacturer	Dimensions [mm]	IMEI	DUT Type
, BARR-WTW-P23030848	240.0 x 50.0 x 75.0		Phone

Exposure Conditions

Phantom Section, TSL	Position, Test Distance [mm]	Band	Group, UID	Frequency [MHz], Channel Number	Conversion Factor	TSL Conductivity [S/m]	TSL Permittivity
Flat,	Bottom Side, 5.00	U-NII-5	WLAN, 10755-AAC	6025.0, 15	5.65	5.31	35.7

Hardware Setup

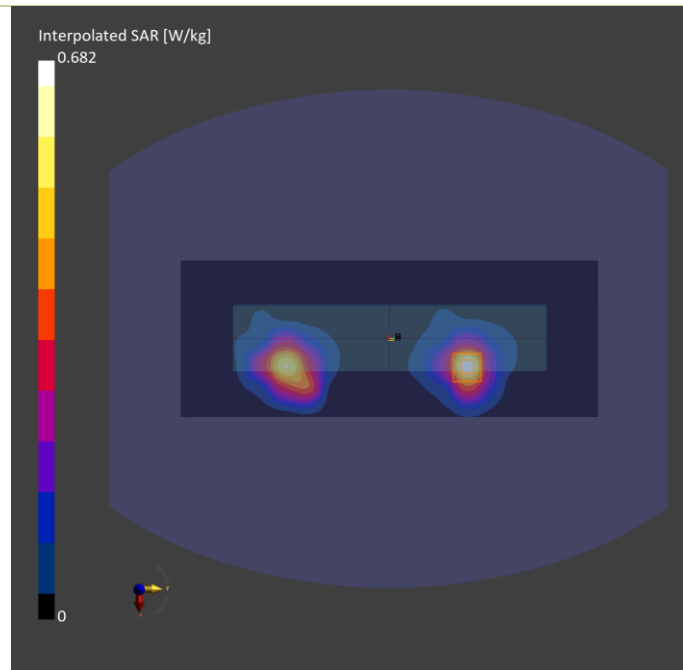
Phantom	TSL, Measured Date	Probe, Calibration Date	DAE, Calibration Date
ELI V5.0 (20deg probe tilt) - 1245	H51T72N10 , 2023-Jun-30	EX3DV4 - SN7554, 2022-07-28	DAE4 Sn1762, 2022-12-08

Scan Setup

	Area Scan	Zoom Scan
Grid Extents [mm]	120.0 x 320.0	22.0 x 22.0 x 22.0
Grid Steps [mm]	7.5 x 7.5	3.4 x 3.4 x 1.4
Sensor Surface [mm]	3.0	1.4

Measurement Results

	Area Scan	Zoom Scan
Date	2023-06-30	2023-06-30
psSAR1g [W/kg]	0.501	0.757
psSAR10g [W/kg]	0.198	0.238
psAPD (1.0cm2, sq) [W/m2]		8.07
psAPD (4.0cm2, sq) [W/m2]		6.48
Power Drift [dB]	0.02	0.03
M2/M1 [%]		56.0
Dist 3dB Peak [mm]		7.8



Plots of Measurement

Measurement Report

P07 PD WLAN6G_802.11ax HE160_Bottom Side_5mm_Ch15_Mode 2T2S_Ant 0+1

Device under Test Properties

Model, Manufacturer	Dimensions [mm]	IMEI	DUT Type
, BARR-WTW-P23030848	240.0 x 50.0 x 75.0		Module

Exposure Conditions

Phantom Section	Position, Test Distance [mm]	Band	Group, UID	Frequency [MHz], Channel Number	Conversion Factor
5G Air	Bottom Side 5.00	U-NII-5	WLAN, 10755-AAC	6025.0, 15	1.0

Hardware Setup

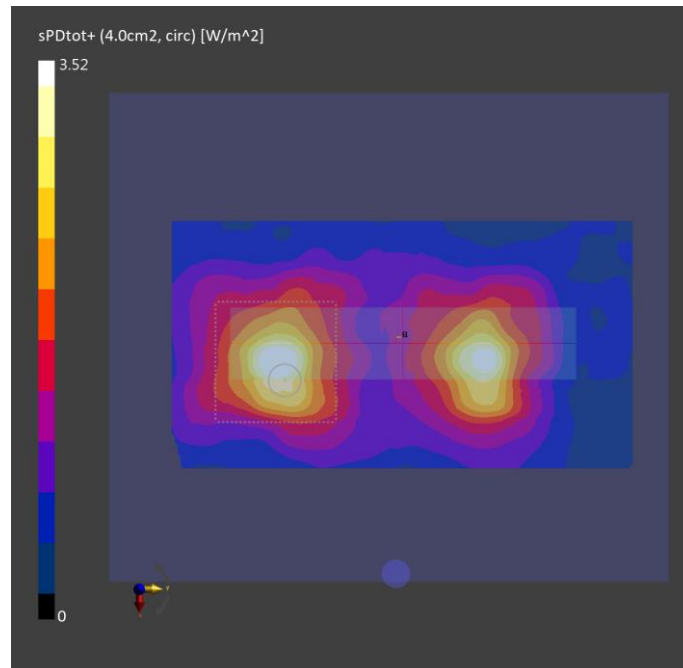
Phantom	Medium	Probe, Calibration Date	DAE, Calibration Date
mmWave- 1030	-Air-	EUmmWV4 - SN9438_F1-55GHz, 2022-07-18	DAE4 Sn1762, 2022-12-08

Scan Setup

	5G Scan	
Grid Extents [mm]	100.0 x	100.0
Grid Steps [lambda]	0.125 x	0.125
Sensor Surface [mm]		5.0

Measurement Results

	5G Scan
Date	2023-06-30
Avg. Area [cm ²]	3.00
psPDn+ [W/m ²]	3.48
psPDtot+ [W/m ²]	3.52
psPDmod+ [W/m ²]	3.33
E _{max} [V/m]	54.6
Power Drift [dB]	-0.04





BUREAU
VERITAS

Appendix D. Maximum Target Conducted Power

The maximum conducted average power (Unit: dBm) including tune-up tolerance is shown as below.

Tune-up Power (1T1S)			
WLAN 2.4GHz			
Mode	Channel	Frequency	SISO Ant 0&1 Max Tune up
802.11b	1	2412	15.5
	6	2437	15.5
	11	2462	15.5
	12	2467	15.5
	13	2472	15.5
802.11g	1	2412	15.5
	6	2437	15.5
	11	2462	15.5
	12	2467	15.5
	13	2472	15.5
802.11n HT20	1	2412	15.5
	6	2437	15.5
	11	2462	15.5
	12	2467	15.5
	13	2472	15.5
802.11n HT40	3	2422	15.5
	6	2437	15.5
	9	2452	15.5
	10	2457	15.5
	11	2462	15.5
802.11ac VHT20	1	2412	15.5
	6	2437	15.5
	11	2462	15.5
	12	2467	15.5
	13	2472	15.5
802.11ac VHT40	3	2422	15.5
	6	2437	15.5
	9	2452	15.5
	10	2457	15.5
	11	2462	15.5
802.11ax HE20	1	2412	15.5
	6	2437	15.5
	11	2462	15.5
	12	2467	15.5
	13	2472	15.5
802.11ax HE40	3	2422	15.5
	6	2437	15.5
	9	2452	15.5
	10	2457	15.5
	11	2462	15.5
802.11be EHT20	1	2412	15.5
	6	2437	15.5
	11	2462	15.5
	12	2467	15.5
	13	2472	15.5
802.11be EHT40	3	2422	15.5
	6	2437	15.5
	9	2452	15.5
	10	2457	15.5
	11	2462	15.5

Tune-up Power (1T1S)			
WLAN 5.2GHz			
Mode	Channel	Frequency	SISO Ant 0&1 Max Tune up
802.11a	36	5180	14.0
	40	5200	14.0
	44	5220	14.0
	48	5240	14.0
802.11n HT20	36	5180	14.0
	40	5200	14.0
	44	5220	14.0
	48	5240	14.0
802.11n HT40	38	5190	14.0
	46	5230	14.0
802.11ac VHT20	36	5180	14.0
	40	5200	14.0
	44	5220	14.0
	48	5240	14.0
802.11ac VHT40	38	5190	14.0
	46	5230	14.0
802.11ac VHT80	42	5210	14.0
802.11ax HE20	36	5180	14.0
	40	5200	14.0
	44	5220	14.0
	48	5240	14.0
802.11ax HE40	38	5190	14.0
	46	5230	14.0
802.11ax HE80	42	5210	14.0
802.11be EHT20	36	5180	14.0
	40	5200	14.0
	44	5220	14.0
	48	5240	14.0
802.11be EHT40	38	5190	14.0
	46	5230	14.0
802.11be EHT80	42	5210	14.0

Tune-up Power (1T1S)			
WLAN 5.3GHz			
Mode	Channel	Frequency	SISO Ant 0&1 Max Tune up
802.11a	52	5260	14.0
	56	5280	14.0
	60	5300	14.0
	64	5320	14.0
802.11n HT20	52	5260	14.0
	56	5280	14.0
	60	5300	14.0
	64	5320	14.0
802.11n HT40	54	5270	14.0
	62	5310	14.0
802.11ac VHT20	52	5260	14.0
	56	5280	14.0
	60	5300	14.0
	64	5320	14.0
802.11ac VHT40	54	5270	14.0
	62	5310	14.0
802.11ac VHT80	58	5290	14.0
802.11ac VHT160	50	5250	14.0
802.11ax HE20	52	5260	14.0
	56	5280	14.0
	60	5300	14.0
	64	5320	14.0
802.11ax HE40	54	5270	14.0
	62	5310	14.0
802.11ax HE80	58	5290	14.0
802.11ax HE160	50	5250	14.0

Tune-up Power (1T1S)			
WLAN 5.6GHz			
Mode	Channel	Frequency	SISO Ant 0&1 Max Tune up
802.11a	100	5500	14.0
	116	5580	14.0
	120	5600	14.0
	124	5620	14.0
	132	5660	14.0
	140	5700	14.0
	144	5720	14.0
802.11n HT20	100	5500	14.0
	116	5580	14.0
	120	5600	14.0
	124	5620	14.0
	132	5660	14.0
	140	5700	14.0
802.11n HT40	102	5510	14.0
	110	5550	14.0
	118	5590	14.0
	126	5630	14.0
	134	5670	14.0
	142	5710	14.0
802.11ac VHT20	100	5500	14.0
	116	5580	14.0
	120	5600	14.0
	124	5620	14.0
	132	5660	14.0
	140	5700	14.0
802.11ac VHT40	102	5510	14.0
	110	5550	14.0
	118	5590	14.0
	126	5630	14.0
	134	5670	14.0
	142	5710	14.0
802.11ac VHT80	106	5530	14.0
	122	5610	14.0
	138	5690	14.0
802.11ac VHT160	114	5570	14.0
802.11ax HE20	100	5500	14.0
	116	5580	14.0
	120	5600	14.0
	124	5620	14.0
	132	5660	14.0
	140	5700	14.0
	144	5720	14.0
802.11ax HE40	102	5510	14.0
	110	5550	14.0
	118	5590	14.0
	126	5630	14.0
	134	5670	14.0
802.11ax HE80	106	5530	14.0
	122	5610	14.0
	138	5690	14.0
802.11ax HE160	114	5570	14.0

Tune-up Power (1T1S)			
WLAN 5.8GHz			
Mode	Channel	Frequency	SISO Ant 0&1 Max Tune up
802.11a	149	5745	14.0
	153	5765	14.0
	157	5785	14.0
	161	5805	14.0
	165	5825	14.0
802.11n HT20	149	5745	14.0
	153	5765	14.0
	157	5785	14.0
	161	5805	14.0
	165	5825	14.0
802.11n HT40	151	5755	14.0
	159	5795	14.0
802.11ac VHT20	149	5745	14.0
	153	5765	14.0
	157	5785	14.0
	161	5805	14.0
	165	5825	14.0
802.11ac VHT40	151	5755	14.0
	159	5795	14.0
802.11ac VHT80	155	5775	14.0
802.11ax HE20	149	5745	14.0
	153	5765	14.0
	157	5785	14.0
	161	5805	14.0
	165	5825	14.0
802.11ax HE40	151	5755	14.0
	159	5795	14.0
802.11ax HE80	155	5775	14.0
802.11be EHT20	149	5745	14.0
	153	5765	14.0
	157	5785	14.0
	161	5805	14.0
	165	5825	14.0
802.11be EHT40	151	5755	14.0
	159	5795	14.0
802.11be EHT80	155	5775	14.0

Tune-up Power (1T1S)			
WLAN 5.9GHz			
Mode	Channel	Frequency	SISO Ant 0&1 Max Tune up
802.11a	169	5845	14.0
	173	5865	14.0
	177	5885	14.0
802.11n HT20	169	5845	14.0
	173	5865	14.0
	177	5885	14.0
802.11n HT40	167	5835	14.0
	175	5875	14.0
802.11ac VHT20	169	5845	14.0
	173	5865	14.0
	177	5885	14.0
802.11ac VHT40	167	5835	14.0
	175	5875	14.0
802.11ac VHT80	171	5855	14.0
802.11ac VHT160	163	5815	14.0
802.11ax HE20	169	5845	14.0
	173	5865	14.0
	177	5885	14.0
802.11ax HE40	167	5835	14.0
	175	5875	14.0
802.11ax HE80	171	5855	14.0
802.11ax HE160	163	5815	14.0
802.11be EHT40	167	5835	14.0
	175	5875	14.0
802.11be EHT80	171	5855	14.0
802.11be EHT160	163	5815	14.0

Tune-up Power (1T1S)_SP			
UNII-5			
Mode	Channel	Frequency	SISO Ant 0&1 Max Tune up
802.11a	1	5955	18.0
	5	5975	18.0
	9	5995	18.0
	13	6015	18.0
	17	6035	18.0
	21	6055	18.0
	25	6075	18.0
	29	6095	18.0
	33	6115	18.0
	37	6135	18.0
	41	6155	18.0
	45	6175	18.0
	49	6195	18.0
	53	6215	18.0
	57	6235	18.0
	61	6255	18.0
	65	6275	18.0
	69	6295	18.0
	73	6315	18.0
	77	6335	18.0
81	6355	18.0	
85	6375	18.0	
89	6395	18.0	
93	6415	18.0	
802.11ax HE20	1	5955	18.0
	5	5975	18.0
	9	5995	18.0
	13	6015	18.0
	17	6035	18.0
	21	6055	18.0
	25	6075	18.0
	29	6095	18.0
	33	6115	18.0
	37	6135	18.0
	41	6155	18.0
	45	6175	18.0
	49	6195	18.0
	53	6215	18.0
	57	6235	18.0
	61	6255	18.0
	65	6275	18.0
	69	6295	18.0
	73	6315	18.0
	77	6335	18.0
81	6355	18.0	
85	6375	18.0	
89	6395	18.0	
93	6415	18.0	

Tune-up Power (1T1S)_SP			
UNII-5			
Mode	Channel	Frequency	SISO Ant 0&1 Max Tune up
802.11ax HE40	3	5965	18.0
	11	6005	18.0
	19	6045	18.0
	27	6085	18.0
	35	6125	18.0
	43	6165	18.0
	51	6205	18.0
	59	6245	18.0
	67	6285	18.0
	75	6325	18.0
	83	6365	18.0
	91	6405	18.0
802.11ax HE80	7	5985	18.0
	23	6065	18.0
	39	6145	18.0
	55	6225	18.0
	71	6305	18.0
	87	6385	18.0
802.11ax HE160	15	6025	18.0
	47	6185	18.0
	79	6345	18.0

Tune-up Power (1T1S)_SP			
UNII-5			
Mode	Channel	Frequency	SISO Ant 0&1 Max Tune up
802.11be EHT20	1	5955	18.0
	5	5975	18.0
	9	5995	18.0
	13	6015	18.0
	17	6035	18.0
	21	6055	18.0
	25	6075	18.0
	29	6095	18.0
	33	6115	18.0
	37	6135	18.0
	41	6155	18.0
	45	6175	18.0
	49	6195	18.0
	53	6215	18.0
	57	6235	18.0
	61	6255	18.0
	65	6275	18.0
	69	6295	18.0
	73	6315	18.0
	77	6335	18.0
81	6355	18.0	
85	6375	18.0	
89	6395	18.0	
93	6415	18.0	
802.11be EHT40	3	5965	18.0
	11	6005	18.0
	19	6045	18.0
	27	6085	18.0
	35	6125	18.0
	43	6165	18.0
	51	6205	18.0
	59	6245	18.0
	67	6285	18.0
	75	6325	18.0
	83	6365	18.0
91	6405	18.0	
802.11be EHT80	7	5985	18.0
	23	6065	18.0
	39	6145	18.0
	55	6225	18.0
	71	6305	18.0
802.11be EHT160	87	6385	18.0
	15	6025	18.0
	47	6185	18.0
	79	6345	18.0

Tune-up Power (1T1S)_SP			
UNII-7			
Mode	Channel	Frequency	SISO Ant 0&1 Max Tune up
802.11a	121	6555	18.0
	125	6575	18.0
	129	6595	18.0
	133	6615	18.0
	137	6635	18.0
	141	6655	18.0
	145	6675	18.0
	149	6695	18.0
	153	6715	18.0
	157	6735	18.0
	161	6755	18.0
	165	6775	18.0
	169	6795	18.0
	173	6815	18.0
	177	6835	18.0
181	6855	18.0	
185	6875	18.0	
802.11ax HE20	121	6555	18.0
	125	6575	18.0
	129	6595	18.0
	133	6615	18.0
	137	6635	18.0
	141	6655	18.0
	145	6675	18.0
	149	6695	18.0
	153	6715	18.0
	157	6735	18.0
	161	6755	18.0
	165	6775	18.0
	169	6795	18.0
	173	6815	18.0
	177	6835	18.0
181	6855	18.0	
185	6875	18.0	
802.11ax HE40	123	6565	18.0
	131	6605	18.0
	139	6645	18.0
	147	6685	18.0
	155	6725	18.0
	163	6765	18.0
	171	6805	18.0
	179	6845	18.0
	187	6885	18.0
802.11ax HE80	135	6625	18.0
	151	6705	18.0
	167	6785	18.0
	183	6865	18.0
802.11ax HE160	143	6665	18.0
	175	6825	18.0

Tune-up Power (1T1S)_SP			
UNII-7			
Mode	Channel	Frequency	SISO Ant 0&1 Max Tune up
802.11be EHT20	121	6555	18.0
	125	6575	18.0
	129	6595	18.0
	133	6615	18.0
	137	6635	18.0
	141	6655	18.0
	145	6675	18.0
	149	6695	18.0
	153	6715	18.0
	157	6735	18.0
	161	6755	18.0
	165	6775	18.0
	169	6795	18.0
	173	6815	18.0
	177	6835	18.0
181	6855	18.0	
185	6875	18.0	
802.11be EHT40	123	6565	18.0
	131	6605	18.0
	139	6645	18.0
	147	6685	18.0
	155	6725	18.0
	163	6765	18.0
	171	6805	18.0
	179	6845	18.0
187	6885	18.0	
802.11be EHT80	135	6625	18.0
	151	6705	18.0
	167	6785	18.0
802.11be EHT160	183	6865	18.0
	143	6665	18.0
	175	6825	18.0

Tune-up Power (1T1S)_LPI			
UNII-5			
Mode	Channel	Frequency	SISO Ant 0&1 Max Tune up
802.11a	1	5955	8.0
	5	5975	8.0
	9	5995	8.0
	13	6015	8.0
	17	6035	8.0
	21	6055	8.0
	25	6075	8.0
	29	6095	8.0
	33	6115	8.0
	37	6135	8.0
	41	6155	8.0
	45	6175	8.0
	49	6195	8.0
	53	6215	8.0
	57	6235	8.0
	61	6255	8.0
	65	6275	8.0
	69	6295	8.0
	73	6315	8.0
	77	6335	8.0
81	6355	8.0	
85	6375	8.0	
89	6395	8.0	
93	6415	8.0	
802.11ax HE20	1	5955	8.0
	5	5975	8.0
	9	5995	8.0
	13	6015	8.0
	17	6035	8.0
	21	6055	8.0
	25	6075	8.0
	29	6095	8.0
	33	6115	8.0
	37	6135	8.0
	41	6155	8.0
	45	6175	8.0
	49	6195	8.0
	53	6215	8.0
	57	6235	8.0
	61	6255	8.0
	65	6275	8.0
	69	6295	8.0
	73	6315	8.0
	77	6335	8.0
81	6355	8.0	
85	6375	8.0	
89	6395	8.0	
93	6415	8.0	

Tune-up Power (1T1S)_LPI			
UNII-5			
Mode	Channel	Frequency	SISO Ant 0&1 Max Tune up
802.11ax HE40	3	5965	10.5
	11	6005	10.5
	19	6045	10.5
	27	6085	10.5
	35	6125	10.5
	43	6165	10.5
	51	6205	10.5
	59	6245	10.5
	67	6285	10.5
	75	6325	10.5
	83	6365	10.5
	91	6405	10.5
802.11ax HE80	7	5985	13.0
	23	6065	13.0
	39	6145	13.0
	55	6225	13.0
	71	6305	13.0
	87	6385	13.0
802.11ax HE160	15	6025	16.5
	47	6185	16.5
	79	6345	16.5

Tune-up Power (1T1S)_LPI			
UNII-5			
Mode	Channel	Frequency	SISO Ant 0&1 Max Tune up
802.11be EHT20	1	5955	8.0
	5	5975	8.0
	9	5995	8.0
	13	6015	8.0
	17	6035	8.0
	21	6055	8.0
	25	6075	8.0
	29	6095	8.0
	33	6115	8.0
	37	6135	8.0
	41	6155	8.0
	45	6175	8.0
	49	6195	8.0
	53	6215	8.0
	57	6235	8.0
	61	6255	8.0
	65	6275	8.0
	69	6295	8.0
	73	6315	8.0
	77	6335	8.0
81	6355	8.0	
85	6375	8.0	
89	6395	8.0	
93	6415	8.0	
802.11be EHT40	3	5965	10.5
	11	6005	10.5
	19	6045	10.5
	27	6085	10.5
	35	6125	10.5
	43	6165	10.5
	51	6205	10.5
	59	6245	10.5
	67	6285	10.5
	75	6325	10.5
	83	6365	10.5
91	6405	10.5	
802.11be EHT80	7	5985	13.0
	23	6065	13.0
	39	6145	13.0
	55	6225	13.0
	71	6305	13.0
87	6385	13.0	
802.11be EHT160	15	6025	16.5
	47	6185	16.5
	79	6345	16.5

Tune-up Power (1T1S)_LPI			
UNII-6			
Mode	Channel	Frequency	SISO Ant 0&1 Max Tune up
802.11a	97	6435	8.0
	101	6455	8.0
	105	6475	8.0
	109	6495	8.0
	113	6515	8.0
	117	6535	8.0
802.11ax HE20	97	6435	8.0
	101	6455	8.0
	105	6475	8.0
	109	6495	8.0
	113	6515	8.0
	117	6535	8.0
802.11ax HE40	99	6445	10.5
	107	6485	10.5
	115	6525	10.5
802.11ax HE80	103	6465	13.0
	119	6545	13.0
802.11ax HE160	111	6505	16.5
802.11be EHT20	97	6435	8.0
	101	6455	8.0
	105	6475	8.0
	109	6495	8.0
	113	6515	8.0
	117	6535	8.0
802.11be EHT40	99	6445	10.5
	107	6485	10.5
	115	6525	10.5
802.11be EHT80	103	6465	13.0
	119	6545	13.0
802.11be EHT160	111	6505	16.5

Tune-up Power (1T1S)_LPI			
UNII-7			
Mode	Channel	Frequency	SISO Ant 0&1 Max Tune up
802.11a	121	6555	8.0
	125	6575	8.0
	129	6595	8.0
	133	6615	8.0
	137	6635	8.0
	141	6655	8.0
	145	6675	8.0
	149	6695	8.0
	153	6715	8.0
	157	6735	8.0
	161	6755	8.0
	165	6775	8.0
	169	6795	8.0
	173	6815	8.0
	177	6835	8.0
	181	6855	8.0
185	6875	8.0	
802.11ax HE20	121	6555	8.0
	125	6575	8.0
	129	6595	8.0
	133	6615	8.0
	137	6635	8.0
	141	6655	8.0
	145	6675	8.0
	149	6695	8.0
	153	6715	8.0
	157	6735	8.0
	161	6755	8.0
	165	6775	8.0
	169	6795	8.0
	173	6815	8.0
	177	6835	8.0
	181	6855	8.0
185	6875	8.0	
802.11ax HE40	123	6565	10.5
	131	6605	10.5
	139	6645	10.5
	147	6685	10.5
	155	6725	10.5
	163	6765	10.5
	171	6805	10.5
	179	6845	10.5
	187	6885	10.5
802.11ax HE80	135	6625	13.0
	151	6705	13.0
	167	6785	13.0
	183	6865	13.0
802.11ax HE160	143	6665	16.5
	175	6825	16.5

Tune-up Power (1T1S)_LPI			
UNII-7			
Mode	Channel	Frequency	SISO Ant 0&1 Max Tune up
802.11be EHT20	121	6555	8.0
	125	6575	8.0
	129	6595	8.0
	133	6615	8.0
	137	6635	8.0
	141	6655	8.0
	145	6675	8.0
	149	6695	8.0
	153	6715	8.0
	157	6735	8.0
	161	6755	8.0
	165	6775	8.0
	169	6795	8.0
	173	6815	8.0
	177	6835	8.0
	181	6855	8.0
185	6875	8.0	
802.11be EHT40	123	6565	10.5
	131	6605	10.5
	139	6645	10.5
	147	6685	10.5
	155	6725	10.5
	163	6765	10.5
	171	6805	10.5
	179	6845	10.5
187	6885	10.5	
802.11be EHT80	135	6625	13.0
	151	6705	13.0
	167	6785	13.0
	183	6865	13.0
802.11be EHT160	143	6665	16.5
	175	6825	16.5

Tune-up Power (1T1S)_LPI			
UNII-8			
Mode	Channel	Frequency	SISO Ant 0&1 Max Tune up
802.11a	189	6895	8.0
	193	6915	8.0
	197	6935	8.0
	201	6955	8.0
	205	6975	8.0
	209	6995	8.0
	213	7015	8.0
	217	7035	8.0
	221	7055	8.0
	225	7075	8.0
	229	7095	8.0
	233	7115	8.0
802.11ax HE20	189	6895	8.0
	193	6915	8.0
	197	6935	8.0
	201	6955	8.0
	205	6975	8.0
	209	6995	8.0
	213	7015	8.0
	217	7035	8.0
	221	7055	8.0
	225	7075	8.0
	229	7095	8.0
	233	7115	8.0
802.11ax HE40	195	6925	10.5
	203	6965	10.5
	211	7005	10.5
	219	7045	10.5
	227	7085	10.5
802.11ax HE80	199	6945	13.0
	215	7025	13.0
802.11ax HE160	207	6985	16.5
802.11be EHT20	189	6895	8.0
	193	6915	8.0
	197	6935	8.0
	201	6955	8.0
	205	6975	8.0
	209	6995	8.0
	213	7015	8.0
	217	7035	8.0
	221	7055	8.0
	225	7075	8.0
	229	7095	8.0
	233	7115	8.0
802.11be EHT40	195	6925	10.5
	203	6965	10.5
	211	7005	10.5
	219	7045	10.5
	227	7085	10.5
802.11be EHT80	199	6945	13.0
	215	7025	13.0
802.11be EHT160	207	6985	16.5



Tune-up Power (2T1S)							
WLAN 2.4GHz							
Mode	Channel	Frequency	SISO Ant 0 Max Tune up	SISO Ant 1 Max Tune up	MIMO Ant 0 Tune up	MIMO Ant 1 Tune up	MIMO Ant 0+1 Max Tune up
802.11b	1	2412	15.5	15.5	15.5	15.5	18.5
	6	2437	15.5	15.5	15.5	15.5	18.5
	11	2462	15.5	15.5	15.5	15.5	18.5
	12	2467	15.5	15.5	15.5	15.5	18.5
	13	2472	11.0	11.0	11.0	11.0	14.0
802.11g	1	2412	15.5	15.5	15.5	15.5	18.5
	6	2437	15.5	15.5	15.5	15.5	18.5
	11	2462	15.5	15.5	15.5	15.5	18.5
	12	2467	15.5	15.5	15.5	15.5	18.5
	13	2472	14.0	14.0	14.0	14.0	17.0



Tune-up Power (2T1S)							
WLAN 5.2GHz							
Mode	Channel	Frequency	SISO Ant 0 Max Tune up	SISO Ant 1 Max Tune up	MIMO Ant 0 Tune up	MIMO Ant 1 Tune up	MIMO Ant 0+1 Max Tune up
802.11a	36	5180	14.0	14.0	14.0	14.0	17.0
	40	5200	14.0	14.0	14.0	14.0	17.0
	44	5220	14.0	14.0	14.0	14.0	17.0
	48	5240	14.0	14.0	14.0	14.0	17.0



Tune-up Power (2T1S)							
WLAN 5.3GHz							
Mode	Channel	Frequency	SISO Ant 0 Max Tune up	SISO Ant 1 Max Tune up	MIMO Ant 0 Tune up	MIMO Ant 1 Tune up	MIMO Ant 0+1 Max Tune up
802.11a	52	5260	14.0	14.0	14.0	14.0	17.0
	56	5280	14.0	14.0	14.0	14.0	17.0
	60	5300	14.0	14.0	14.0	14.0	17.0
	64	5320	14.0	14.0	14.0	14.0	17.0



Tune-up Power (2T1S)							
WLAN 5.6GHz							
Mode	Channel	Frequency	SISO Ant 0 Max Tune up	SISO Ant 1 Max Tune up	MIMO Ant 0 Tune up	MIMO Ant 1 Tune up	MIMO Ant 0+1 Max Tune up
802.11a	100	5500	14.0	14.0	14.0	14.0	17.0
	116	5580	14.0	14.0	14.0	14.0	17.0
	120	5600	14.0	14.0	14.0	14.0	17.0
	124	5620	14.0	14.0	14.0	14.0	17.0
	132	5660	14.0	14.0	14.0	14.0	17.0
	140	5700	14.0	14.0	14.0	14.0	17.0
	144	5720	14.0	14.0	14.0	14.0	17.0



Tune-up Power (2T1S)							
WLAN 5.8GHz							
Mode	Channel	Frequency	SISO Ant 0 Max Tune up	SISO Ant 1 Max Tune up	MIMO Ant 0 Tune up	MIMO Ant 1 Tune up	MIMO Ant 0+1 Max Tune up
802.11a	149	5745	14.0	14.0	14.0	14.0	17.0
	153	5765	14.0	14.0	14.0	14.0	17.0
	157	5785	14.0	14.0	14.0	14.0	17.0
	161	5805	14.0	14.0	14.0	14.0	17.0
	165	5825	14.0	14.0	14.0	14.0	17.0



Tune-up Power (2T1S)							
WLAN 5.9GHz							
Mode	Channel	Frequency	SISO Ant 0 Max Tune up	SISO Ant 1 Max Tune up	MIMO Ant 0 Tune up	MIMO Ant 1 Tune up	MIMO Ant 0+1 Max Tune up
802.11a	169	5845	14.0	14.0	14.0	14.0	17.0
	173	5865	14.0	14.0	14.0	14.0	17.0
	177	5885	14.0	14.0	14.0	14.0	17.0



Tune-up Power (2T1S)_SP

UNII-5

Mode	Channel	Frequency	SISO Ant 0 Max Tune up	SISO Ant 1 Max Tune up	MIMO Ant 0 Tune up	MIMO Ant 1 Tune up	MIMO Ant 0+1 Max Tune up
802.11a	1	5955	18.0	18.0	18.0	18.0	21.0
	5	5975	18.0	18.0	18.0	18.0	21.0
	9	5995	18.0	18.0	18.0	18.0	21.0
	13	6015	18.0	18.0	18.0	18.0	21.0
	17	6035	18.0	18.0	18.0	18.0	21.0
	21	6055	18.0	18.0	18.0	18.0	21.0
	25	6075	18.0	18.0	18.0	18.0	21.0
	29	6095	18.0	18.0	18.0	18.0	21.0
	33	6115	18.0	18.0	18.0	18.0	21.0
	37	6135	18.0	18.0	18.0	18.0	21.0
	41	6155	18.0	18.0	18.0	18.0	21.0
	45	6175	18.0	18.0	18.0	18.0	21.0
	49	6195	18.0	18.0	18.0	18.0	21.0
	53	6215	18.0	18.0	18.0	18.0	21.0
	57	6235	18.0	18.0	18.0	18.0	21.0
	61	6255	18.0	18.0	18.0	18.0	21.0
	65	6275	18.0	18.0	18.0	18.0	21.0
	69	6295	18.0	18.0	18.0	18.0	21.0
	73	6315	18.0	18.0	18.0	18.0	21.0
	77	6335	18.0	18.0	18.0	18.0	21.0
81	6355	18.0	18.0	18.0	18.0	21.0	
85	6375	18.0	18.0	18.0	18.0	21.0	
89	6395	18.0	18.0	18.0	18.0	21.0	
93	6415	18.0	18.0	18.0	18.0	21.0	



Tune-up Power (2T1S)_SP

UNII-7

Mode	Channel	Frequency	SISO Ant 0 Max Tune up	SISO Ant 1 Max Tune up	MIMO Ant 0 Tune up	MIMO Ant 1 Tune up	MIMO Ant 0+1 Max Tune up
802.11a	121	6555	18.0	18.0	18.0	18.0	21.0
	125	6575	18.0	18.0	18.0	18.0	21.0
	129	6595	18.0	18.0	18.0	18.0	21.0
	133	6615	18.0	18.0	18.0	18.0	21.0
	137	6635	18.0	18.0	18.0	18.0	21.0
	141	6655	18.0	18.0	18.0	18.0	21.0
	145	6675	18.0	18.0	18.0	18.0	21.0
	149	6695	18.0	18.0	18.0	18.0	21.0
	153	6715	18.0	18.0	18.0	18.0	21.0
	157	6735	18.0	18.0	18.0	18.0	21.0
	161	6755	18.0	18.0	18.0	18.0	21.0
	165	6775	18.0	18.0	18.0	18.0	21.0
	169	6795	18.0	18.0	18.0	18.0	21.0
	173	6815	18.0	18.0	18.0	18.0	21.0
	177	6835	18.0	18.0	18.0	18.0	21.0
181	6855	18.0	18.0	18.0	18.0	21.0	
185	6875	18.0	18.0	18.0	18.0	21.0	

Tune-up Power (2T1S)_LPI
UNII-5

Mode	Channel	Frequency	SISO Ant 0 Max Tune up	SISO Ant 1 Max Tune up	MIMO Ant 0 Tune up	MIMO Ant 1 Tune up	MIMO Ant 0+1 Max Tune up
802.11a	1	5955	2.0	2.0	2.0	2.0	5.0
	5	5975	2.0	2.0	2.0	2.0	5.0
	9	5995	2.0	2.0	2.0	2.0	5.0
	13	6015	2.0	2.0	2.0	2.0	5.0
	17	6035	2.0	2.0	2.0	2.0	5.0
	21	6055	2.0	2.0	2.0	2.0	5.0
	25	6075	2.0	2.0	2.0	2.0	5.0
	29	6095	2.0	2.0	2.0	2.0	5.0
	33	6115	2.0	2.0	2.0	2.0	5.0
	37	6135	2.0	2.0	2.0	2.0	5.0
	41	6155	2.0	2.0	2.0	2.0	5.0
	45	6175	2.0	2.0	2.0	2.0	5.0
	49	6195	2.0	2.0	2.0	2.0	5.0
	53	6215	2.0	2.0	2.0	2.0	5.0
	57	6235	2.0	2.0	2.0	2.0	5.0
	61	6255	2.0	2.0	2.0	2.0	5.0
	65	6275	2.0	2.0	2.0	2.0	5.0
	69	6295	2.0	2.0	2.0	2.0	5.0
73	6315	2.0	2.0	2.0	2.0	5.0	
77	6335	2.0	2.0	2.0	2.0	5.0	
81	6355	2.0	2.0	2.0	2.0	5.0	
85	6375	2.0	2.0	2.0	2.0	5.0	
89	6395	2.0	2.0	2.0	2.0	5.0	
93	6415	2.0	2.0	2.0	2.0	5.0	



Tune-up Power (2T1S)_LPI

UNII-6

Mode	Channel	Frequency	SISO Ant 0 Max Tune up	SISO Ant 1 Max Tune up	MIMO Ant 0 Tune up	MIMO Ant 1 Tune up	MIMO Ant 0+1 Max Tune up
802.11a	97	6435	2.0	2.0	2.0	2.0	5.0
	101	6455	2.0	2.0	2.0	2.0	5.0
	105	6475	2.0	2.0	2.0	2.0	5.0
	109	6495	2.0	2.0	2.0	2.0	5.0
	113	6515	2.0	2.0	2.0	2.0	5.0
	117	6535	2.0	2.0	2.0	2.0	5.0



Tune-up Power (2T1S)_LPI

UNII-7

Mode	Channel	Frequency	SISO Ant 0 Max Tune up	SISO Ant 1 Max Tune up	MIMO Ant 0 Tune up	MIMO Ant 1 Tune up	MIMO Ant 0+1 Max Tune up
802.11a	121	6555	2.0	2.0	2.0	2.0	5.0
	125	6575	2.0	2.0	2.0	2.0	5.0
	129	6595	2.0	2.0	2.0	2.0	5.0
	133	6615	2.0	2.0	2.0	2.0	5.0
	137	6635	2.0	2.0	2.0	2.0	5.0
	141	6655	2.0	2.0	2.0	2.0	5.0
	145	6675	2.0	2.0	2.0	2.0	5.0
	149	6695	2.0	2.0	2.0	2.0	5.0
	153	6715	2.0	2.0	2.0	2.0	5.0
	157	6735	2.0	2.0	2.0	2.0	5.0
	161	6755	2.0	2.0	2.0	2.0	5.0
	165	6775	2.0	2.0	2.0	2.0	5.0
	169	6795	2.0	2.0	2.0	2.0	5.0
	173	6815	2.0	2.0	2.0	2.0	5.0
	177	6835	2.0	2.0	2.0	2.0	5.0
181	6855	2.0	2.0	2.0	2.0	5.0	
185	6875	2.0	2.0	2.0	2.0	5.0	

Tune-up Power (2T1S)_LPI
UNII-8

Mode	Channel	Frequency	SISO Ant 0 Max Tune up	SISO Ant 1 Max Tune up	MIMO Ant 0 Tune up	MIMO Ant 1 Tune up	MIMO Ant 0+1 Max Tune up
802.11a	189	6895	2.0	2.0	2.0	2.0	5.0
	193	6915	2.0	2.0	2.0	2.0	5.0
	197	6935	2.0	2.0	2.0	2.0	5.0
	201	6955	2.0	2.0	2.0	2.0	5.0
	205	6975	2.0	2.0	2.0	2.0	5.0
	209	6995	2.0	2.0	2.0	2.0	5.0
	213	7015	2.0	2.0	2.0	2.0	5.0
	217	7035	2.0	2.0	2.0	2.0	5.0
	221	7055	2.0	2.0	2.0	2.0	5.0
	225	7075	2.0	2.0	2.0	2.0	5.0
	229	7095	2.0	2.0	2.0	2.0	5.0
233	7115	2.0	2.0	2.0	2.0	5.0	

Tune-up Power (2T2S)							
WLAN 2.4GHz							
Mode	Channel	Frequency	SISO Ant 0 Max Tune up	SISO Ant 1 Max Tune up	MIMO Ant 0 Tune up	MIMO Ant 1 Tune up	MIMO Ant 0+1 Max Tune up
802.11n HT20	1	2412	15.5	15.5	15.5	15.5	18.5
	6	2437	15.5	15.5	15.5	15.5	18.5
	11	2462	15.5	15.5	15.5	15.5	18.5
	12	2467	15.5	15.5	15.5	15.5	18.5
	13	2472	15.5	15.5	15.5	15.5	18.5
802.11n HT40	3	2422	15.5	15.5	15.5	15.5	18.5
	6	2437	15.5	15.5	15.5	15.5	18.5
	9	2452	15.5	15.5	15.5	15.5	18.5
	10	2457	15.5	15.5	15.5	15.5	18.5
	11	2462	15.5	15.5	15.5	15.5	18.5
802.11ac VHT20	1	2412	15.5	15.5	15.5	15.5	18.5
	6	2437	15.5	15.5	15.5	15.5	18.5
	11	2462	15.5	15.5	15.5	15.5	18.5
	12	2467	15.5	15.5	15.5	15.5	18.5
	13	2472	15.5	15.5	15.5	15.5	18.5
802.11ac VHT40	3	2422	15.5	15.5	15.5	15.5	18.5
	6	2437	15.5	15.5	15.5	15.5	18.5
	9	2452	15.5	15.5	15.5	15.5	18.5
	10	2457	15.5	15.5	15.5	15.5	18.5
	11	2462	15.5	15.5	15.5	15.5	18.5
802.11ax HE20	1	2412	15.5	15.5	15.5	15.5	18.5
	6	2437	15.5	15.5	15.5	15.5	18.5
	11	2462	15.5	15.5	15.5	15.5	18.5
	12	2467	15.5	15.5	15.5	15.5	18.5
	13	2472	15.5	15.5	15.5	15.5	18.5
802.11ax HE40	3	2422	15.5	15.5	15.5	15.5	18.5
	6	2437	15.5	15.5	15.5	15.5	18.5
	9	2452	15.5	15.5	15.5	15.5	18.5
	10	2457	15.5	15.5	15.5	15.5	18.5
	11	2462	15.5	15.5	15.5	15.5	18.5
802.11be EHT20	1	2412	15.5	15.5	15.5	15.5	18.5
	6	2437	15.5	15.5	15.5	15.5	18.5
	11	2462	15.5	15.5	15.5	15.5	18.5
	12	2467	15.5	15.5	15.5	15.5	18.5
	13	2472	15.5	15.5	15.5	15.5	18.5
802.11be EHT40	3	2422	15.5	15.5	15.5	15.5	18.5
	6	2437	15.5	15.5	15.5	15.5	18.5
	9	2452	15.5	15.5	15.5	15.5	18.5
	10	2457	15.5	15.5	15.5	15.5	18.5
	11	2462	15.5	15.5	15.5	15.5	18.5

Tune-up Power (2T2S)							
WLAN 5.2GHz							
Mode	Channel	Frequency	SISO Ant 0 Max Tune up	SISO Ant 1 Max Tune up	MIMO Ant 0 Tune up	MIMO Ant 1 Tune up	MIMO Ant 0+1 Max Tune up
802.11n HT20	36	5180	14.0	14.0	14.0	14.0	17.0
	40	5200	14.0	14.0	14.0	14.0	17.0
	44	5220	14.0	14.0	14.0	14.0	17.0
	48	5240	14.0	14.0	14.0	14.0	17.0
802.11n HT40	38	5190	14.0	14.0	14.0	14.0	17.0
	46	5230	14.0	14.0	14.0	14.0	17.0
802.11ac VHT20	36	5180	14.0	14.0	14.0	14.0	17.0
	40	5200	14.0	14.0	14.0	14.0	17.0
	44	5220	14.0	14.0	14.0	14.0	17.0
	48	5240	14.0	14.0	14.0	14.0	17.0
802.11ac VHT40	38	5190	14.0	14.0	14.0	14.0	17.0
	46	5230	14.0	14.0	14.0	14.0	17.0
802.11ac VHT80	42	5210	14.0	14.0	14.0	14.0	17.0
802.11ax HE20	36	5180	14.0	14.0	14.0	14.0	17.0
	40	5200	14.0	14.0	14.0	14.0	17.0
	44	5220	14.0	14.0	14.0	14.0	17.0
	48	5240	14.0	14.0	14.0	14.0	17.0
802.11ax HE40	38	5190	14.0	14.0	14.0	14.0	17.0
	46	5230	14.0	14.0	14.0	14.0	17.0
802.11ax HE80	42	5210	14.0	14.0	14.0	14.0	17.0
802.11be EHT20	36	5180	14.0	14.0	14.0	14.0	17.0
	40	5200	14.0	14.0	14.0	14.0	17.0
	44	5220	14.0	14.0	14.0	14.0	17.0
	48	5240	14.0	14.0	14.0	14.0	17.0
802.11be EHT40	38	5190	14.0	14.0	14.0	14.0	17.0
	46	5230	14.0	14.0	14.0	14.0	17.0
802.11be EHT80	42	5210	14.0	14.0	14.0	14.0	17.0



Tune-up Power (2T2S)							
WLAN 5.3GHz							
Mode	Channel	Frequency	SISO Ant 0 Max Tune up	SISO Ant 1 Max Tune up	MIMO Ant 0 Tune up	MIMO Ant 1 Tune up	MIMO Ant 0+1 Max Tune up
802.11n HT20	52	5260	14.0	14.0	14.0	14.0	17.0
	56	5280	14.0	14.0	14.0	14.0	17.0
	60	5300	14.0	14.0	14.0	14.0	17.0
	64	5320	14.0	14.0	14.0	14.0	17.0
802.11n HT40	54	5270	14.0	14.0	14.0	14.0	17.0
	62	5310	14.0	14.0	14.0	14.0	17.0
802.11ac VHT20	52	5260	14.0	14.0	14.0	14.0	17.0
	56	5280	14.0	14.0	14.0	14.0	17.0
	60	5300	14.0	14.0	14.0	14.0	17.0
	64	5320	14.0	14.0	14.0	14.0	17.0
802.11ac VHT40	54	5270	14.0	14.0	14.0	14.0	17.0
	62	5310	14.0	14.0	14.0	14.0	17.0
802.11ac VHT80	58	5290	14.0	14.0	14.0	14.0	17.0
802.11ac VHT160	50	5250	14.0	14.0	14.0	14.0	17.0
802.11ax HE20	52	5260	14.0	14.0	14.0	14.0	17.0
	56	5280	14.0	14.0	14.0	14.0	17.0
	60	5300	14.0	14.0	14.0	14.0	17.0
	64	5320	14.0	14.0	14.0	14.0	17.0
802.11ax HE40	54	5270	14.0	14.0	14.0	14.0	17.0
	62	5310	14.0	14.0	14.0	14.0	17.0
802.11ax HE80	58	5290	14.0	14.0	14.0	14.0	17.0
802.11ax HE160	50	5250	14.0	14.0	14.0	14.0	17.0

Tune-up Power (2T2S)							
WLAN 5.6GHz							
Mode	Channel	Frequency	SISO Ant 0 Max Tune up	SISO Ant 1 Max Tune up	MIMO Ant 0 Tune up	MIMO Ant 1 Tune up	MIMO Ant 0+1 Max Tune up
802.11n HT20	100	5500	14.0	14.0	14.0	14.0	17.0
	116	5580	14.0	14.0	14.0	14.0	17.0
	120	5600	14.0	14.0	14.0	14.0	17.0
	124	5620	14.0	14.0	14.0	14.0	17.0
	132	5660	14.0	14.0	14.0	14.0	17.0
	140	5700	14.0	14.0	14.0	14.0	17.0
	144	5720	14.0	14.0	14.0	14.0	17.0
802.11n HT40	102	5510	14.0	14.0	14.0	14.0	17.0
	110	5550	14.0	14.0	14.0	14.0	17.0
	118	5590	14.0	14.0	14.0	14.0	17.0
	126	5630	14.0	14.0	14.0	14.0	17.0
	134	5670	14.0	14.0	14.0	14.0	17.0
802.11ac VHT20	100	5500	14.0	14.0	14.0	14.0	17.0
	116	5580	14.0	14.0	14.0	14.0	17.0
	120	5600	14.0	14.0	14.0	14.0	17.0
	124	5620	14.0	14.0	14.0	14.0	17.0
	132	5660	14.0	14.0	14.0	14.0	17.0
	140	5700	14.0	14.0	14.0	14.0	17.0
	144	5720	14.0	14.0	14.0	14.0	17.0
802.11ac VHT40	102	5510	14.0	14.0	14.0	14.0	17.0
	110	5550	14.0	14.0	14.0	14.0	17.0
	118	5590	14.0	14.0	14.0	14.0	17.0
	126	5630	14.0	14.0	14.0	14.0	17.0
	134	5670	14.0	14.0	14.0	14.0	17.0
802.11ac VHT80	106	5530	14.0	14.0	14.0	14.0	17.0
	122	5610	14.0	14.0	14.0	14.0	17.0
	138	5690	14.0	14.0	14.0	14.0	17.0
802.11ac VHT160	114	5570	14.0	14.0	14.0	14.0	17.0
802.11ax HE20	100	5500	14.0	14.0	14.0	14.0	17.0
	116	5580	14.0	14.0	14.0	14.0	17.0
	120	5600	14.0	14.0	14.0	14.0	17.0
	124	5620	14.0	14.0	14.0	14.0	17.0
	132	5660	14.0	14.0	14.0	14.0	17.0
	140	5700	14.0	14.0	14.0	14.0	17.0
	144	5720	14.0	14.0	14.0	14.0	17.0
802.11ax HE40	102	5510	14.0	14.0	14.0	14.0	17.0
	110	5550	14.0	14.0	14.0	14.0	17.0
	118	5590	14.0	14.0	14.0	14.0	17.0
	126	5630	14.0	14.0	14.0	14.0	17.0
	134	5670	14.0	14.0	14.0	14.0	17.0
802.11ax HE80	106	5530	14.0	14.0	14.0	14.0	17.0
	122	5610	14.0	14.0	14.0	14.0	17.0
	138	5690	14.0	14.0	14.0	14.0	17.0
802.11ax HE160	114	5570	14.0	14.0	14.0	14.0	17.0

Tune-up Power (2T2S)							
WLAN 5.8GHz							
Mode	Channel	Frequency	SISO Ant 0 Max Tune up	SISO Ant 1 Max Tune up	MIMO Ant 0 Tune up	MIMO Ant 1 Tune up	MIMO Ant 0+1 Max Tune up
802.11n HT20	149	5745	14.0	14.0	14.0	14.0	17.0
	153	5765	14.0	14.0	14.0	14.0	17.0
	157	5785	14.0	14.0	14.0	14.0	17.0
	161	5805	14.0	14.0	14.0	14.0	17.0
	165	5825	14.0	14.0	14.0	14.0	17.0
802.11n HT40	151	5755	14.0	14.0	14.0	14.0	17.0
	159	5795	14.0	14.0	14.0	14.0	17.0
802.11ac VHT20	149	5745	14.0	14.0	14.0	14.0	17.0
	153	5765	14.0	14.0	14.0	14.0	17.0
	157	5785	14.0	14.0	14.0	14.0	17.0
	161	5805	14.0	14.0	14.0	14.0	17.0
	165	5825	14.0	14.0	14.0	14.0	17.0
802.11ac VHT40	151	5755	14.0	14.0	14.0	14.0	17.0
	159	5795	14.0	14.0	14.0	14.0	17.0
802.11ac VHT80	155	5775	14.0	14.0	14.0	14.0	17.0
802.11ax HE20	149	5745	14.0	14.0	14.0	14.0	17.0
	153	5765	14.0	14.0	14.0	14.0	17.0
	157	5785	14.0	14.0	14.0	14.0	17.0
	161	5805	14.0	14.0	14.0	14.0	17.0
	165	5825	14.0	14.0	14.0	14.0	17.0
802.11ax HE40	151	5755	14.0	14.0	14.0	14.0	17.0
	159	5795	14.0	14.0	14.0	14.0	17.0
802.11ax HE80	155	5775	14.0	14.0	14.0	14.0	17.0
802.11be EHT20	149	5745	14.0	14.0	14.0	14.0	17.0
	153	5765	14.0	14.0	14.0	14.0	17.0
	157	5785	14.0	14.0	14.0	14.0	17.0
	161	5805	14.0	14.0	14.0	14.0	17.0
	165	5825	14.0	14.0	14.0	14.0	17.0
802.11be EHT40	151	5755	14.0	14.0	14.0	14.0	17.0
	159	5795	14.0	14.0	14.0	14.0	17.0
802.11be EHT80	155	5775	14.0	14.0	14.0	14.0	17.0

Tune-up Power (2T2S)							
WLAN 5.9GHz							
Mode	Channel	Frequency	SISO Ant 0 Max Tune up	SISO Ant 1 Max Tune up	MIMO Ant 0 Tune up	MIMO Ant 1 Tune up	MIMO Ant 0+1 Max Tune up
802.11n HT20	169	5845	14.0	14.0	14.0	14.0	17.0
	173	5865	14.0	14.0	14.0	14.0	17.0
	177	5885	14.0	14.0	14.0	14.0	17.0
802.11n HT40	167	5835	14.0	14.0	14.0	14.0	17.0
	175	5875	14.0	14.0	14.0	14.0	17.0
802.11ac VHT20	169	5845	14.0	14.0	14.0	14.0	17.0
	173	5865	14.0	14.0	14.0	14.0	17.0
	177	5885	14.0	14.0	14.0	14.0	17.0
802.11ac VHT40	167	5835	14.0	14.0	14.0	14.0	17.0
	175	5875	14.0	14.0	14.0	14.0	17.0
802.11ac VHT80	171	5855	14.0	14.0	14.0	14.0	17.0
802.11ac VHT160	163	5815	14.0	14.0	14.0	14.0	17.0
802.11ax HE20	169	5845	14.0	14.0	14.0	14.0	17.0
	173	5865	14.0	14.0	14.0	14.0	17.0
	177	5885	14.0	14.0	14.0	14.0	17.0
802.11ax HE40	167	5835	14.0	14.0	14.0	14.0	17.0
	175	5875	14.0	14.0	14.0	14.0	17.0
802.11ax HE80	171	5855	14.0	14.0	14.0	14.0	17.0
802.11ax HE160	163	5815	14.0	14.0	14.0	14.0	17.0
802.11be EHT40	167	5835	14.0	14.0	14.0	14.0	17.0
	175	5875	14.0	14.0	14.0	14.0	17.0
802.11be EHT80	171	5855	14.0	14.0	14.0	14.0	17.0
802.11be EHT160	163	5815	14.0	14.0	14.0	14.0	17.0

Tune-up Power (2T2S)_SP							
UNII-5							
Mode	Channel	Frequency	SISO Ant 0 Max Tune up	SISO Ant 1 Max Tune up	MIMO Ant 0 Tune up	MIMO Ant 1 Tune up	MIMO Ant 0+1 Max Tune up
802.11ax HE20	1	5955	18.0	18.0	18.0	18.0	21.0
	5	5975	18.0	18.0	18.0	18.0	21.0
	9	5995	18.0	18.0	18.0	18.0	21.0
	13	6015	18.0	18.0	18.0	18.0	21.0
	17	6035	18.0	18.0	18.0	18.0	21.0
	21	6055	18.0	18.0	18.0	18.0	21.0
	25	6075	18.0	18.0	18.0	18.0	21.0
	29	6095	18.0	18.0	18.0	18.0	21.0
	33	6115	18.0	18.0	18.0	18.0	21.0
	37	6135	18.0	18.0	18.0	18.0	21.0
	41	6155	18.0	18.0	18.0	18.0	21.0
	45	6175	18.0	18.0	18.0	18.0	21.0
	49	6195	18.0	18.0	18.0	18.0	21.0
	53	6215	18.0	18.0	18.0	18.0	21.0
	57	6235	18.0	18.0	18.0	18.0	21.0
	61	6255	18.0	18.0	18.0	18.0	21.0
	65	6275	18.0	18.0	18.0	18.0	21.0
	69	6295	18.0	18.0	18.0	18.0	21.0
	73	6315	18.0	18.0	18.0	18.0	21.0
	77	6335	18.0	18.0	18.0	18.0	21.0
81	6355	18.0	18.0	18.0	18.0	21.0	
85	6375	18.0	18.0	18.0	18.0	21.0	
89	6395	18.0	18.0	18.0	18.0	21.0	
93	6415	18.0	18.0	18.0	18.0	21.0	

Tune-up Power (2T2S)_SP							
UNII-5							
Mode	Channel	Frequency	SISO Ant 0 Max Tune up	SISO Ant 1 Max Tune up	MIMO Ant 0 Tune up	MIMO Ant 1 Tune up	MIMO Ant 0+1 Max Tune up
802.11ax HE40	3	5965	18.0	18.0	18.0	18.0	21.0
	11	6005	18.0	18.0	18.0	18.0	21.0
	19	6045	18.0	18.0	18.0	18.0	21.0
	27	6085	18.0	18.0	18.0	18.0	21.0
	35	6125	18.0	18.0	18.0	18.0	21.0
	43	6165	18.0	18.0	18.0	18.0	21.0
	51	6205	18.0	18.0	18.0	18.0	21.0
	59	6245	18.0	18.0	18.0	18.0	21.0
	67	6285	18.0	18.0	18.0	18.0	21.0
	75	6325	18.0	18.0	18.0	18.0	21.0
	83	6365	18.0	18.0	18.0	18.0	21.0
802.11ax HE80	91	6405	18.0	18.0	18.0	18.0	21.0
	7	5985	18.0	18.0	18.0	18.0	21.0
	23	6065	18.0	18.0	18.0	18.0	21.0
	39	6145	18.0	18.0	18.0	18.0	21.0
	55	6225	18.0	18.0	18.0	18.0	21.0
	71	6305	18.0	18.0	18.0	18.0	21.0
802.11ax HE160	87	6385	18.0	18.0	18.0	18.0	21.0
	15	6025	18.0	18.0	18.0	18.0	21.0
	47	6185	18.0	18.0	18.0	18.0	21.0
	79	6345	18.0	18.0	18.0	18.0	21.0

Tune-up Power (2T2S)_SP							
UNII-5							
Mode	Channel	Frequency	SISO Ant 0 Max Tune up	SISO Ant 1 Max Tune up	MIMO Ant 0 Tune up	MIMO Ant 1 Tune up	MIMO Ant 0+1 Max Tune up
802.11be EHT20	1	5955	18.0	18.0	18.0	18.0	21.0
	5	5975	18.0	18.0	18.0	18.0	21.0
	9	5995	18.0	18.0	18.0	18.0	21.0
	13	6015	18.0	18.0	18.0	18.0	21.0
	17	6035	18.0	18.0	18.0	18.0	21.0
	21	6055	18.0	18.0	18.0	18.0	21.0
	25	6075	18.0	18.0	18.0	18.0	21.0
	29	6095	18.0	18.0	18.0	18.0	21.0
	33	6115	18.0	18.0	18.0	18.0	21.0
	37	6135	18.0	18.0	18.0	18.0	21.0
	41	6155	18.0	18.0	18.0	18.0	21.0
	45	6175	18.0	18.0	18.0	18.0	21.0
	49	6195	18.0	18.0	18.0	18.0	21.0
	53	6215	18.0	18.0	18.0	18.0	21.0
	57	6235	18.0	18.0	18.0	18.0	21.0
	61	6255	18.0	18.0	18.0	18.0	21.0
	65	6275	18.0	18.0	18.0	18.0	21.0
	69	6295	18.0	18.0	18.0	18.0	21.0
	73	6315	18.0	18.0	18.0	18.0	21.0
	77	6335	18.0	18.0	18.0	18.0	21.0
81	6355	18.0	18.0	18.0	18.0	21.0	
85	6375	18.0	18.0	18.0	18.0	21.0	
89	6395	18.0	18.0	18.0	18.0	21.0	
93	6415	18.0	18.0	18.0	18.0	21.0	
802.11be EHT40	3	5965	18.0	18.0	18.0	18.0	21.0
	11	6005	18.0	18.0	18.0	18.0	21.0
	19	6045	18.0	18.0	18.0	18.0	21.0
	27	6085	18.0	18.0	18.0	18.0	21.0
	35	6125	18.0	18.0	18.0	18.0	21.0
	43	6165	18.0	18.0	18.0	18.0	21.0
	51	6205	18.0	18.0	18.0	18.0	21.0
	59	6245	18.0	18.0	18.0	18.0	21.0
	67	6285	18.0	18.0	18.0	18.0	21.0
	75	6325	18.0	18.0	18.0	18.0	21.0
83	6365	18.0	18.0	18.0	18.0	21.0	
91	6405	18.0	18.0	18.0	18.0	21.0	
802.11be EHT80	7	5985	18.0	18.0	18.0	18.0	21.0
	23	6065	18.0	18.0	18.0	18.0	21.0
	39	6145	18.0	18.0	18.0	18.0	21.0
	55	6225	18.0	18.0	18.0	18.0	21.0
	71	6305	18.0	18.0	18.0	18.0	21.0
87	6385	18.0	18.0	18.0	18.0	21.0	
802.11be EHT160	15	6025	18.0	18.0	18.0	18.0	21.0
	47	6185	18.0	18.0	18.0	18.0	21.0
	79	6345	18.0	18.0	18.0	18.0	21.0

Tune-up Power (2T2S)_SP							
UNII-7							
Mode	Channel	Frequency	SISO Ant 0 Max Tune up	SISO Ant 1 Max Tune up	MIMO Ant 0 Tune up	MIMO Ant 1 Tune up	MIMO Ant 0+1 Max Tune up
802.11ax HE20	121	6555	18.0	18.0	18.0	18.0	21.0
	125	6575	18.0	18.0	18.0	18.0	21.0
	129	6595	18.0	18.0	18.0	18.0	21.0
	133	6615	18.0	18.0	18.0	18.0	21.0
	137	6635	18.0	18.0	18.0	18.0	21.0
	141	6655	18.0	18.0	18.0	18.0	21.0
	145	6675	18.0	18.0	18.0	18.0	21.0
	149	6695	18.0	18.0	18.0	18.0	21.0
	153	6715	18.0	18.0	18.0	18.0	21.0
	157	6735	18.0	18.0	18.0	18.0	21.0
	161	6755	18.0	18.0	18.0	18.0	21.0
	165	6775	18.0	18.0	18.0	18.0	21.0
	169	6795	18.0	18.0	18.0	18.0	21.0
	173	6815	18.0	18.0	18.0	18.0	21.0
	177	6835	18.0	18.0	18.0	18.0	21.0
	181	6855	18.0	18.0	18.0	18.0	21.0
185	6875	18.0	18.0	18.0	18.0	21.0	
802.11ax HE40	123	6565	18.0	18.0	18.0	18.0	21.0
	131	6605	18.0	18.0	18.0	18.0	21.0
	139	6645	18.0	18.0	18.0	18.0	21.0
	147	6685	18.0	18.0	18.0	18.0	21.0
	155	6725	18.0	18.0	18.0	18.0	21.0
	163	6765	18.0	18.0	18.0	18.0	21.0
	171	6805	18.0	18.0	18.0	18.0	21.0
	179	6845	18.0	18.0	18.0	18.0	21.0
187	6885	18.0	18.0	18.0	18.0	21.0	
802.11ax HE80	135	6625	18.0	18.0	18.0	18.0	21.0
	151	6705	18.0	18.0	18.0	18.0	21.0
	167	6785	18.0	18.0	18.0	18.0	21.0
	183	6865	18.0	18.0	18.0	18.0	21.0
802.11ax HE160	143	6665	18.0	18.0	18.0	18.0	21.0
	175	6825	18.0	18.0	18.0	18.0	21.0

Tune-up Power (2T2S)_SP							
UNII-7							
Mode	Channel	Frequency	SISO Ant 0 Max Tune up	SISO Ant 1 Max Tune up	MIMO Ant 0 Tune up	MIMO Ant 1 Tune up	MIMO Ant 0+1 Max Tune up
802.11be EHT20	121	6555	18.0	18.0	18.0	18.0	21.0
	125	6575	18.0	18.0	18.0	18.0	21.0
	129	6595	18.0	18.0	18.0	18.0	21.0
	133	6615	18.0	18.0	18.0	18.0	21.0
	137	6635	18.0	18.0	18.0	18.0	21.0
	141	6655	18.0	18.0	18.0	18.0	21.0
	145	6675	18.0	18.0	18.0	18.0	21.0
	149	6695	18.0	18.0	18.0	18.0	21.0
	153	6715	18.0	18.0	18.0	18.0	21.0
	157	6735	18.0	18.0	18.0	18.0	21.0
	161	6755	18.0	18.0	18.0	18.0	21.0
	165	6775	18.0	18.0	18.0	18.0	21.0
	169	6795	18.0	18.0	18.0	18.0	21.0
	173	6815	18.0	18.0	18.0	18.0	21.0
	177	6835	18.0	18.0	18.0	18.0	21.0
181	6855	18.0	18.0	18.0	18.0	21.0	
185	6875	18.0	18.0	18.0	18.0	21.0	
802.11be EHT40	123	6565	18.0	18.0	18.0	18.0	21.0
	131	6605	18.0	18.0	18.0	18.0	21.0
	139	6645	18.0	18.0	18.0	18.0	21.0
	147	6685	18.0	18.0	18.0	18.0	21.0
	155	6725	18.0	18.0	18.0	18.0	21.0
	163	6765	18.0	18.0	18.0	18.0	21.0
	171	6805	18.0	18.0	18.0	18.0	21.0
	179	6845	18.0	18.0	18.0	18.0	21.0
187	6885	18.0	18.0	18.0	18.0	21.0	
802.11be EHT80	135	6625	18.0	18.0	18.0	18.0	21.0
	151	6705	18.0	18.0	18.0	18.0	21.0
	167	6785	18.0	18.0	18.0	18.0	21.0
	183	6865	18.0	18.0	18.0	18.0	21.0
802.11be EHT160	143	6665	18.0	18.0	18.0	18.0	21.0
	175	6825	18.0	18.0	18.0	18.0	21.0

Tune-up Power (2T2S)_LPI							
UNII-5							
Mode	Channel	Frequency	SISO Ant 0 Max Tune up	SISO Ant 1 Max Tune up	MIMO Ant 0 Tune up	MIMO Ant 1 Tune up	MIMO Ant 0+1 Max Tune up
802.11ax HE20	1	5955	4.5	4.5	4.5	4.5	7.5
	5	5975	4.5	4.5	4.5	4.5	7.5
	9	5995	4.5	4.5	4.5	4.5	7.5
	13	6015	4.5	4.5	4.5	4.5	7.5
	17	6035	4.5	4.5	4.5	4.5	7.5
	21	6055	4.5	4.5	4.5	4.5	7.5
	25	6075	4.5	4.5	4.5	4.5	7.5
	29	6095	4.5	4.5	4.5	4.5	7.5
	33	6115	4.5	4.5	4.5	4.5	7.5
	37	6135	4.5	4.5	4.5	4.5	7.5
	41	6155	4.5	4.5	4.5	4.5	7.5
	45	6175	4.5	4.5	4.5	4.5	7.5
	49	6195	4.5	4.5	4.5	4.5	7.5
	53	6215	4.5	4.5	4.5	4.5	7.5
	57	6235	4.5	4.5	4.5	4.5	7.5
	61	6255	4.5	4.5	4.5	4.5	7.5
	65	6275	4.5	4.5	4.5	4.5	7.5
	69	6295	4.5	4.5	4.5	4.5	7.5
	73	6315	4.5	4.5	4.5	4.5	7.5
	77	6335	4.5	4.5	4.5	4.5	7.5
81	6355	4.5	4.5	4.5	4.5	7.5	
85	6375	4.5	4.5	4.5	4.5	7.5	
89	6395	4.5	4.5	4.5	4.5	7.5	
93	6415	4.5	4.5	4.5	4.5	7.5	



Tune-up Power (2T2S)_LPI							
UNII-5							
Mode	Channel	Frequency	SISO Ant 0 Max Tune up	SISO Ant 1 Max Tune up	MIMO Ant 0 Tune up	MIMO Ant 1 Tune up	MIMO Ant 0+1 Max Tune up
802.11ax HE40	3	5965	7.5	7.5	7.5	7.5	10.5
	11	6005	7.5	7.5	7.5	7.5	10.5
	19	6045	7.5	7.5	7.5	7.5	10.5
	27	6085	7.5	7.5	7.5	7.5	10.5
	35	6125	7.5	7.5	7.5	7.5	10.5
	43	6165	7.5	7.5	7.5	7.5	10.5
	51	6205	7.5	7.5	7.5	7.5	10.5
	59	6245	7.5	7.5	7.5	7.5	10.5
	67	6285	7.5	7.5	7.5	7.5	10.5
	75	6325	7.5	7.5	7.5	7.5	10.5
	83	6365	7.5	7.5	7.5	7.5	10.5
91	6405	7.5	7.5	7.5	7.5	10.5	
802.11ax HE80	7	5985	10.5	10.5	10.5	10.5	13.5
	23	6065	10.5	10.5	10.5	10.5	13.5
	39	6145	10.5	10.5	10.5	10.5	13.5
	55	6225	10.5	10.5	10.5	10.5	13.5
	71	6305	10.5	10.5	10.5	10.5	13.5
	87	6385	10.5	10.5	10.5	10.5	13.5
802.11ax HE160	15	6025	13.0	13.0	13.0	13.0	16.0
	47	6185	13.0	13.0	13.0	13.0	16.0
	79	6345	13.0	13.0	13.0	13.0	16.0

Tune-up Power (2T2S)_LPI							
UNII-5							
Mode	Channel	Frequency	SISO Ant 0 Max Tune up	SISO Ant 1 Max Tune up	MIMO Ant 0 Tune up	MIMO Ant 1 Tune up	MIMO Ant 0+1 Max Tune up
802.11be EHT20	1	5955	4.5	4.5	4.5	4.5	7.5
	5	5975	4.5	4.5	4.5	4.5	7.5
	9	5995	4.5	4.5	4.5	4.5	7.5
	13	6015	4.5	4.5	4.5	4.5	7.5
	17	6035	4.5	4.5	4.5	4.5	7.5
	21	6055	4.5	4.5	4.5	4.5	7.5
	25	6075	4.5	4.5	4.5	4.5	7.5
	29	6095	4.5	4.5	4.5	4.5	7.5
	33	6115	4.5	4.5	4.5	4.5	7.5
	37	6135	4.5	4.5	4.5	4.5	7.5
	41	6155	4.5	4.5	4.5	4.5	7.5
	45	6175	4.5	4.5	4.5	4.5	7.5
	49	6195	4.5	4.5	4.5	4.5	7.5
	53	6215	4.5	4.5	4.5	4.5	7.5
	57	6235	4.5	4.5	4.5	4.5	7.5
	61	6255	4.5	4.5	4.5	4.5	7.5
	65	6275	4.5	4.5	4.5	4.5	7.5
	69	6295	4.5	4.5	4.5	4.5	7.5
	73	6315	4.5	4.5	4.5	4.5	7.5
	77	6335	4.5	4.5	4.5	4.5	7.5
81	6355	4.5	4.5	4.5	4.5	7.5	
85	6375	4.5	4.5	4.5	4.5	7.5	
89	6395	4.5	4.5	4.5	4.5	7.5	
93	6415	4.5	4.5	4.5	4.5	7.5	
802.11be EHT40	3	5965	7.5	7.5	7.5	7.5	10.5
	11	6005	7.5	7.5	7.5	7.5	10.5
	19	6045	7.5	7.5	7.5	7.5	10.5
	27	6085	7.5	7.5	7.5	7.5	10.5
	35	6125	7.5	7.5	7.5	7.5	10.5
	43	6165	7.5	7.5	7.5	7.5	10.5
	51	6205	7.5	7.5	7.5	7.5	10.5
	59	6245	7.5	7.5	7.5	7.5	10.5
	67	6285	7.5	7.5	7.5	7.5	10.5
	75	6325	7.5	7.5	7.5	7.5	10.5
	83	6365	7.5	7.5	7.5	7.5	10.5
91	6405	7.5	7.5	7.5	7.5	10.5	
802.11be EHT80	7	5985	10.5	10.5	10.5	10.5	13.5
	23	6065	10.5	10.5	10.5	10.5	13.5
	39	6145	10.5	10.5	10.5	10.5	13.5
	55	6225	10.5	10.5	10.5	10.5	13.5
	71	6305	10.5	10.5	10.5	10.5	13.5
	87	6385	10.5	10.5	10.5	10.5	13.5
802.11be EHT160	15	6025	13.0	13.0	13.0	13.0	16.0
	47	6185	13.0	13.0	13.0	13.0	16.0
	79	6345	13.0	13.0	13.0	13.0	16.0

Tune-up Power (2T2S)_LPI							
UNII-6							
Mode	Channel	Frequency	SISO Ant 0 Max Tune up	SISO Ant 1 Max Tune up	MIMO Ant 0 Tune up	MIMO Ant 1 Tune up	MIMO Ant 0+1 Max Tune up
802.11ax HE20	97	6435	4.5	4.5	4.5	4.5	7.5
	101	6455	4.5	4.5	4.5	4.5	7.5
	105	6475	4.5	4.5	4.5	4.5	7.5
	109	6495	4.5	4.5	4.5	4.5	7.5
	113	6515	4.5	4.5	4.5	4.5	7.5
	117	6535	4.5	4.5	4.5	4.5	7.5
802.11ax HE40	99	6445	7.5	7.5	7.5	7.5	10.5
	107	6485	7.5	7.5	7.5	7.5	10.5
	115	6525	7.5	7.5	7.5	7.5	10.5
802.11ax HE80	103	6465	10.5	10.5	10.5	10.5	13.5
	119	6545	10.5	10.5	10.5	10.5	13.5
802.11ax HE160	111	6505	13.0	13.0	13.0	13.0	16.0
802.11be EHT20	97	6435	4.5	4.5	4.5	4.5	7.5
	101	6455	4.5	4.5	4.5	4.5	7.5
	105	6475	4.5	4.5	4.5	4.5	7.5
	109	6495	4.5	4.5	4.5	4.5	7.5
	113	6515	4.5	4.5	4.5	4.5	7.5
	117	6535	4.5	4.5	4.5	4.5	7.5
802.11be EHT40	99	6445	7.5	7.5	7.5	7.5	10.5
	107	6485	7.5	7.5	7.5	7.5	10.5
	115	6525	7.5	7.5	7.5	7.5	10.5
802.11be EHT80	103	6465	10.5	10.5	10.5	10.5	13.5
	119	6545	10.5	10.5	10.5	10.5	13.5
802.11be EHT160	111	6505	13.0	13.0	13.0	13.0	16.0

Tune-up Power (2T2S)_LPI							
UNII-7							
Mode	Channel	Frequency	SISO Ant 0 Max Tune up	SISO Ant 1 Max Tune up	MIMO Ant 0 Tune up	MIMO Ant 1 Tune up	MIMO Ant 0+1 Max Tune up
802.11ax HE20	121	6555	4.5	4.5	4.5	4.5	7.5
	125	6575	4.5	4.5	4.5	4.5	7.5
	129	6595	4.5	4.5	4.5	4.5	7.5
	133	6615	4.5	4.5	4.5	4.5	7.5
	137	6635	4.5	4.5	4.5	4.5	7.5
	141	6655	4.5	4.5	4.5	4.5	7.5
	145	6675	4.5	4.5	4.5	4.5	7.5
	149	6695	4.5	4.5	4.5	4.5	7.5
	153	6715	4.5	4.5	4.5	4.5	7.5
	157	6735	4.5	4.5	4.5	4.5	7.5
	161	6755	4.5	4.5	4.5	4.5	7.5
	165	6775	4.5	4.5	4.5	4.5	7.5
	169	6795	4.5	4.5	4.5	4.5	7.5
	173	6815	4.5	4.5	4.5	4.5	7.5
	177	6835	4.5	4.5	4.5	4.5	7.5
802.11ax HE40	181	6855	4.5	4.5	4.5	4.5	7.5
	185	6875	4.5	4.5	4.5	4.5	7.5
	123	6565	7.5	7.5	7.5	7.5	10.5
	131	6605	7.5	7.5	7.5	7.5	10.5
	139	6645	7.5	7.5	7.5	7.5	10.5
	147	6685	7.5	7.5	7.5	7.5	10.5
	155	6725	7.5	7.5	7.5	7.5	10.5
	163	6765	7.5	7.5	7.5	7.5	10.5
802.11ax HE80	171	6805	7.5	7.5	7.5	7.5	10.5
	179	6845	7.5	7.5	7.5	7.5	10.5
	187	6885	7.5	7.5	7.5	7.5	10.5
	135	6625	10.5	10.5	10.5	10.5	13.5
802.11ax HE160	151	6705	10.5	10.5	10.5	10.5	13.5
	167	6785	10.5	10.5	10.5	10.5	13.5
	183	6865	10.5	10.5	10.5	10.5	13.5
802.11ax HE160	143	6665	13.0	13.0	13.0	13.0	16.0
	175	6825	13.0	13.0	13.0	13.0	16.0

Tune-up Power (2T2S)_LPI							
UNII-7							
Mode	Channel	Frequency	SISO Ant 0 Max Tune up	SISO Ant 1 Max Tune up	MIMO Ant 0 Tune up	MIMO Ant 1 Tune up	MIMO Ant 0+1 Max Tune up
802.11be EHT20	121	6555	4.5	4.5	4.5	4.5	7.5
	125	6575	4.5	4.5	4.5	4.5	7.5
	129	6595	4.5	4.5	4.5	4.5	7.5
	133	6615	4.5	4.5	4.5	4.5	7.5
	137	6635	4.5	4.5	4.5	4.5	7.5
	141	6655	4.5	4.5	4.5	4.5	7.5
	145	6675	4.5	4.5	4.5	4.5	7.5
	149	6695	4.5	4.5	4.5	4.5	7.5
	153	6715	4.5	4.5	4.5	4.5	7.5
	157	6735	4.5	4.5	4.5	4.5	7.5
	161	6755	4.5	4.5	4.5	4.5	7.5
	165	6775	4.5	4.5	4.5	4.5	7.5
	169	6795	4.5	4.5	4.5	4.5	7.5
	173	6815	4.5	4.5	4.5	4.5	7.5
	177	6835	4.5	4.5	4.5	4.5	7.5
802.11be EHT40	181	6855	4.5	4.5	4.5	4.5	7.5
	185	6875	4.5	4.5	4.5	4.5	7.5
	123	6565	7.5	7.5	7.5	7.5	10.5
	131	6605	7.5	7.5	7.5	7.5	10.5
	139	6645	7.5	7.5	7.5	7.5	10.5
	147	6685	7.5	7.5	7.5	7.5	10.5
	155	6725	7.5	7.5	7.5	7.5	10.5
	163	6765	7.5	7.5	7.5	7.5	10.5
802.11be EHT80	171	6805	7.5	7.5	7.5	7.5	10.5
	179	6845	7.5	7.5	7.5	7.5	10.5
	187	6885	7.5	7.5	7.5	7.5	10.5
	135	6625	10.5	10.5	10.5	10.5	13.5
802.11be EHT160	151	6705	10.5	10.5	10.5	10.5	13.5
	167	6785	10.5	10.5	10.5	10.5	13.5
	183	6865	10.5	10.5	10.5	10.5	13.5
802.11be EHT160	143	6665	13.0	13.0	13.0	13.0	16.0
	175	6825	13.0	13.0	13.0	13.0	16.0

Tune-up Power (2T2S)_LPI							
UNII-8							
Mode	Channel	Frequency	SISO Ant 0 Max Tune up	SISO Ant 1 Max Tune up	MIMO Ant 0 Tune up	MIMO Ant 1 Tune up	MIMO Ant 0+1 Max Tune up
802.11ax HE20	189	6895	4.5	4.5	4.5	4.5	7.5
	193	6915	4.5	4.5	4.5	4.5	7.5
	197	6935	4.5	4.5	4.5	4.5	7.5
	201	6955	4.5	4.5	4.5	4.5	7.5
	205	6975	4.5	4.5	4.5	4.5	7.5
	209	6995	4.5	4.5	4.5	4.5	7.5
	213	7015	4.5	4.5	4.5	4.5	7.5
	217	7035	4.5	4.5	4.5	4.5	7.5
	221	7055	4.5	4.5	4.5	4.5	7.5
	225	7075	4.5	4.5	4.5	4.5	7.5
	229	7095	4.5	4.5	4.5	4.5	7.5
233	7115	4.5	4.5	4.5	4.5	7.5	
802.11ax HE40	195	6925	7.5	7.5	7.5	7.5	10.5
	203	6965	7.5	7.5	7.5	7.5	10.5
	211	7005	7.5	7.5	7.5	7.5	10.5
	219	7045	7.5	7.5	7.5	7.5	10.5
	227	7085	7.5	7.5	7.5	7.5	10.5
802.11ax HE80	199	6945	10.5	10.5	10.5	10.5	13.5
	215	7025	10.5	10.5	10.5	10.5	13.5
802.11ax HE160	207	6985	13.0	13.0	13.0	13.0	16.0
802.11be EHT20	189	6895	4.5	4.5	4.5	4.5	7.5
	193	6915	4.5	4.5	4.5	4.5	7.5
	197	6935	4.5	4.5	4.5	4.5	7.5
	201	6955	4.5	4.5	4.5	4.5	7.5
	205	6975	4.5	4.5	4.5	4.5	7.5
	209	6995	4.5	4.5	4.5	4.5	7.5
	213	7015	4.5	4.5	4.5	4.5	7.5
	217	7035	4.5	4.5	4.5	4.5	7.5
	221	7055	4.5	4.5	4.5	4.5	7.5
	225	7075	4.5	4.5	4.5	4.5	7.5
	229	7095	4.5	4.5	4.5	4.5	7.5
233	7115	4.5	4.5	4.5	4.5	7.5	
802.11be EHT40	195	6925	7.5	7.5	7.5	7.5	10.5
	203	6965	7.5	7.5	7.5	7.5	10.5
	211	7005	7.5	7.5	7.5	7.5	10.5
	219	7045	7.5	7.5	7.5	7.5	10.5
	227	7085	7.5	7.5	7.5	7.5	10.5
802.11be EHT80	199	6945	10.5	10.5	10.5	10.5	13.5
	215	7025	10.5	10.5	10.5	10.5	13.5
802.11be EHT160	207	6985	13.0	13.0	13.0	13.0	16.0



Tune-up Power			
Bluetooth			
Mode	Channel	Frequency	Ant 0&1 Max Tune-up
BR / EDR	0	2402	13.0
	39	2441	13.0
	78	2480	13.0
LE	0	2402	13.0
	19	2440	13.0
	39	2480	13.0



BUREAU
VERITAS

Appendix E. Measured Conducted Power Result

The measuring conducted power (Unit: dBm) are shown as below.



BUREAU
VERITAS

Conducted Power (1T1S)			
WLAN2.4GHz Ant 0&1			
Mode	Channel	Frequency	SISO Ant 0&1 Avg. Power
802.11b	1	2412	15.36
	6	2437	15.32
	11	2462	15.33
	12	2467	15.29
	13	2472	15.24



Conducted Power (1T1S)			
WLAN 5.3GHz Ant 0&1			
Mode	Channel	Frequency	SISO Ant 0&1 Avg. Power
802.11ac VHT160	50	5250	13.85



**BUREAU
VERITAS**

Conducted Power (1T1S)			
WLAN 5.6GHz Ant 0&1			
Mode	Channel	Frequency	SISO Ant 0&1 Avg. Power
802.11ac VHT160	114	5570	13.83



Conducted Power (1T1S)			
WLAN 5.8GHz Ant 0&1			
Mode	Channel	Frequency	SISO Ant 0&1 Avg. Power
802.11ac VHT80	155	5775	13.89



Conducted Power (1T1S)			
WLAN 5.9GHz Ant 0&1			
Mode	Channel	Frequency	SISO Ant 0&1 Avg. Power
802.11ac VHT160	163	5815	13.88



**BUREAU
VERITAS**

Conducted Power (1T1S)_SP			
UNII-5 Ant 0&1			
Mode	Channel	Frequency	SISO Ant 0&1 Avg. Power
802.11ax HE160	15	6025	17.85
	47	6185	17.92
	79	6345	17.81



**BUREAU
VERITAS**

Conducted Power (1T1S)_SP			
UNII-7 Ant 0&1			
Mode	Channel	Frequency	SISO Ant 0&1 Avg. Power
802.11ax HE160	143	6665	17.71
	175	6825	17.85



**BUREAU
VERITAS**

Conducted Power (1T1S)_LPI			
UNII-5 Ant 0&1			
Mode	Channel	Frequency	SISO Ant 0&1 Avg. Power
802.11ax HE160	15	6025	15.22
	47	6185	15.03
	79	6345	15.28



**BUREAU
VERITAS**

Conducted Power (1T1S)_LPI			
UNII-6 Ant 0&1			
Mode	Channel	Frequency	SISO Ant 0&1 Avg. Power
802.11ax HE160	111	6505	15.78



**BUREAU
VERITAS**

Conducted Power (1T1S)_LPI			
UNII-7 Ant 0&1			
Mode	Channel	Frequency	SISO Ant 0&1 Avg. Power
802.11ax HE160	143	6665	15.12
	175	6825	15.18



**BUREAU
VERITAS**

Conducted Power (1T1S)_LPI			
UNII-8 Ant 0&1			
Mode	Channel	Frequency	SISO Ant 0&1 Avg. Power
802.11ax HE160	207	6985	15.99



Conducted Power (2T1S)			
WLAN2.4GHz Ant 0			
Mode	Channel	Frequency	SISO Ant 0 Avg. Power
802.11b	1	2412	15.12
	6	2437	14.85
	11	2462	14.86
	12	2467	15.11
	13	2472	10.39



BUREAU
VERITAS

Conducted Power (2T1S)			
WLAN2.4GHz Ant 1			
Mode	Channel	Frequency	SISO Ant 1 Avg. Power
802.11b	1	2412	15.37
	6	2437	15.3
	11	2462	15.36
	12	2467	15.32
	13	2472	10.85



Conducted Power (2T1S)			
WLAN2.4GHz Ant 0+1			
Mode	Channel	Frequency	MIMO Ant 0+1 Avg. Power
802.11b	1	2412	18.18
	6	2437	17.99
	11	2462	17.92
	12	2467	17.95
	13	2472	13.64



Conducted Power (2T1S)			
WLAN 5.3GHz Ant 0			
Mode	Channel	Frequency	SISO Ant 0 Avg. Power
802.11a	52	5260	13.77
	56	5280	13.76
	60	5300	13.79
	64	5320	13.72



BUREAU
VERITAS

Conducted Power (2T1S)			
WLAN 5.3GHz Ant 1			
Mode	Channel	Frequency	SISO Ant 1 Avg. Power
802.11a	52	5260	13.73
	56	5280	13.72
	60	5300	13.77
	64	5320	13.75



Conducted Power (2T1S)			
WLAN 5.3GHz Ant 0+1			
Mode	Channel	Frequency	MIMO Ant 0+1 Avg. Power
802.11a	52	5260	16.76
	56	5280	16.75
	60	5300	16.79
	64	5320	16.75



Conducted Power (2T1S)			
WLAN 5.6GHz Ant 0			
Mode	Channel	Frequency	SISO Ant 0 Avg. Power
802.11a	100	5500	13.77
	116	5580	13.85
	120	5600	13.72
	124	5620	13.75
	132	5660	13.83
	140	5700	13.82
	144	5720	13.84



Conducted Power (2T1S)			
WLAN 5.6GHz Ant 1			
Mode	Channel	Frequency	SISO Ant 1 Avg. Power
802.11a	100	5500	13.79
	116	5580	13.87
	120	5600	13.81
	124	5620	13.82
	132	5660	13.79
	140	5700	13.83
	144	5720	13.84



Conducted Power (2T1S)			
WLAN 5.6GHz Ant 0+1			
Mode	Channel	Frequency	MIMO Ant 0+1 Avg. Power
802.11a	100	5500	16.79
	116	5580	16.87
	120	5600	16.78
	124	5620	16.8
	132	5660	16.82
	140	5700	16.84
	144	5720	16.85



Conducted Power (2T1S)			
WLAN 5.8GHz Ant 0			
Mode	Channel	Frequency	SISO Ant 0 Avg. Power
802.11a	149	5745	13.91
	153	5765	13.83
	157	5785	13.88
	161	5805	13.82
	165	5825	13.85



Conducted Power (2T1S)			
WLAN 5.8GHz Ant 1			
Mode	Channel	Frequency	SISO Ant 1 Avg. Power
802.11a	149	5745	13.89
	153	5765	13.84
	157	5785	13.86
	161	5805	13.83
	165	5825	13.78



Conducted Power (2T1S)			
WLAN 5.8GHz Ant 0+1			
Mode	Channel	Frequency	MIMO Ant 0+1 Avg. Power
802.11a	149	5745	16.91
	153	5765	16.85
	157	5785	16.88
	161	5805	16.84
	165	5825	16.83



Conducted Power (2T1S)			
WLAN 5.9GHz Ant 0			
Mode	Channel	Frequency	SISO Ant 0 Avg. Power
802.11a	169	5845	13.85
	173	5865	13.34
	177	5885	13.88



BUREAU
VERITAS

Conducted Power (2T1S)			
WLAN 5.9GHz Ant 1			
Mode	Channel	Frequency	SISO Ant 1 Avg. Power
802.11a	169	5845	13.79
	173	5865	13.75
	177	5885	13.83



Conducted Power (2T1S)			
WLAN 5.9GHz Ant 0+1			
Mode	Channel	Frequency	MIMO Ant 0+1 Avg. Power
802.11a	169	5845	16.83
	173	5865	16.83
	177	5885	16.87



Conducted Power (2T1S)_SP			
UNII-5 Ant 0			
Mode	Channel	Frequency	SISO Ant 0 Avg. Power
802.11a	1	5955	17.73
	5	5975	17.64
	9	5995	17.65
	13	6015	17.61
	17	6035	17.75
	21	6055	17.74
	25	6075	17.64
	29	6095	17.64
	33	6115	17.74
	37	6135	17.73
	41	6155	17.75
	45	6175	17.62
	49	6195	17.61
	53	6215	17.7
	57	6235	17.76
	61	6255	17.76
	65	6275	17.66
	69	6295	17.61
	73	6315	17.72
	77	6335	17.66
81	6355	17.74	
85	6375	17.76	
89	6395	17.62	
93	6415	17.78	



Conducted Power (2T1S)_SP			
UNII-5 Ant 1			
Mode	Channel	Frequency	SISO Ant 1 Avg. Power
802.11a	1	5955	17.52
	5	5975	17.63
	9	5995	17.68
	13	6015	17.56
	17	6035	17.52
	21	6055	17.57
	25	6075	17.57
	29	6095	17.7
	33	6115	17.59
	37	6135	17.65
	41	6155	17.56
	45	6175	17.66
	49	6195	17.54
	53	6215	17.64
	57	6235	17.7
	61	6255	17.51
	65	6275	17.69
	69	6295	17.66
	73	6315	17.66
	77	6335	17.62
81	6355	17.58	
85	6375	17.61	
89	6395	17.53	
93	6415	17.73	

Conducted Power (2T1S)_SP			
UNII-5 Ant 0+1			
Mode	Channel	Frequency	MIMO Ant 0+1 Avg. Power
802.11a	1	5955	20.64
	5	5975	20.65
	9	5995	20.68
	13	6015	20.6
	17	6035	20.65
	21	6055	20.67
	25	6075	20.62
	29	6095	20.68
	33	6115	20.68
	37	6135	20.7
	41	6155	20.67
	45	6175	20.65
	49	6195	20.59
	53	6215	20.68
	57	6235	20.74
	61	6255	20.65
	65	6275	20.69
	69	6295	20.65
	73	6315	20.7
	77	6335	20.65
81	6355	20.67	
85	6375	20.7	
89	6395	20.59	
93	6415	20.87	

Conducted Power (2T1S)_SP			
UNII-7 Ant 0			
Mode	Channel	Frequency	SISO Ant 0 Avg. Power
802.11a	121	6555	17.75
	125	6575	17.61
	129	6595	17.62
	133	6615	17.65
	137	6635	17.72
	141	6655	17.62
	145	6675	17.69
	149	6695	17.73
	153	6715	17.64
	157	6735	17.63
	161	6755	17.74
	165	6775	17.66
	169	6795	17.68
	173	6815	17.64
	177	6835	17.72
	181	6855	17.65
185	6875	17.73	

Conducted Power (2T1S)_SP			
UNII-7 Ant 1			
Mode	Channel	Frequency	SISO Ant 1 Avg. Power
802.11a	121	6555	17.68
	125	6575	17.69
	129	6595	17.52
	133	6615	17.7
	137	6635	17.65
	141	6655	17.54
	145	6675	17.54
	149	6695	17.64
	153	6715	17.67
	157	6735	17.61
	161	6755	17.7
	165	6775	17.6
	169	6795	17.59
	173	6815	17.55
	177	6835	17.65
	181	6855	17.6
185	6875	17.71	

Conducted Power (2T1S)_SP			
UNII-7 Ant 0+1			
Mode	Channel	Frequency	MIMO Ant 0+1 Avg. Power
802.11a	121	6555	20.73
	125	6575	20.66
	129	6595	20.58
	133	6615	20.69
	137	6635	20.7
	141	6655	20.59
	145	6675	20.63
	149	6695	20.7
	153	6715	20.67
	157	6735	20.63
	161	6755	20.73
	165	6775	20.64
	169	6795	20.65
	173	6815	20.61
	177	6835	20.7
	181	6855	20.64
185	6875	20.73	

Conducted Power (2T1S)_LPI			
UNII-5 Ant 0			
Mode	Channel	Frequency	SISO Ant 0 Avg. Power
802.11a	1	5955	0.62
	5	5975	0.64
	9	5995	0.68
	13	6015	0.71
	17	6035	0.73
	21	6055	0.67
	25	6075	0.63
	29	6095	0.59
	33	6115	0.61
	37	6135	0.54
	41	6155	0.57
	45	6175	0.49
	49	6195	0.61
	53	6215	0.67
	57	6235	0.72
	61	6255	0.77
	65	6275	0.84
	69	6295	0.89
	73	6315	0.92
	77	6335	0.95
81	6355	1.04	
85	6375	1.11	
89	6395	1.17	
93	6415	0.73	

Conducted Power (2T1S)_LPI			
UNII-5 Ant 1			
Mode	Channel	Frequency	SISO Ant 1 Avg. Power
802.11a	1	5955	1.5
	5	5975	0.75
	9	5995	0.79
	13	6015	0.82
	17	6035	0.84
	21	6055	0.78
	25	6075	0.74
	29	6095	0.7
	33	6115	0.72
	37	6135	0.65
	41	6155	0.68
	45	6175	1.61
	49	6195	0.7
	53	6215	0.76
	57	6235	0.81
	61	6255	0.86
	65	6275	0.93
	69	6295	0.98
	73	6315	1.01
	77	6335	1.04
81	6355	1.13	
85	6375	1.2	
89	6395	1.26	
93	6415	1.6	

Conducted Power (2T1S)_LPI			
UNII-5 Ant 0+1			
Mode	Channel	Frequency	MIMO Ant 0+1 Avg. Power
802.11a	1	5955	4.09
	5	5975	3.71
	9	5995	3.75
	13	6015	3.78
	17	6035	3.8
	21	6055	3.74
	25	6075	3.7
	29	6095	3.66
	33	6115	3.68
	37	6135	3.61
	41	6155	3.64
	45	6175	4.1
	49	6195	3.67
	53	6215	3.73
	57	6235	3.78
	61	6255	3.83
	65	6275	4.11
	69	6295	3.95
	73	6315	3.98
77	6335	4.01	
81	6355	4.1	
85	6375	4.17	
89	6395	4.15	
93	6415	4.2	



**BUREAU
VERITAS**

Conducted Power (2T1S)_LPI			
UNII-6 Ant 0			
Mode	Channel	Frequency	SISO Ant 0 Avg. Power
802.11a	97	6435	1.2
	101	6455	0.97
	105	6475	0.98
	109	6495	1.02
	113	6515	1.1
	117	6535	1.12



Conducted Power (2T1S)_LPI			
UNII-6 Ant 1			
Mode	Channel	Frequency	SISO Ant 1 Avg. Power
802.11a	97	6435	1.96
	101	6455	1.71
	105	6475	1.93
	109	6495	1.88
	113	6515	1.93
	117	6535	1.22

Conducted Power (2T1S)_LPI			
UNII-6 Ant 0+1			
Mode	Channel	Frequency	MIMO Ant 0+1 Avg. Power
802.11a	97	6435	4.61
	101	6455	4.37
	105	6475	4.53
	109	6495	4.48
	113	6515	4.18
	117	6535	4.18

Conducted Power (2T1S)_LPI			
UNII-7 Ant 0			
Mode	Channel	Frequency	SISO Ant 0 Avg. Power
802.11a	121	6555	1.04
	125	6575	1.02
	129	6595	1.16
	133	6615	1.01
	137	6635	1.18
	141	6655	1.13
	145	6675	1.05
	149	6695	0.97
	153	6715	1.04
	157	6735	1.07
	161	6755	1.16
	165	6775	1.18
	169	6795	1.05
	173	6815	1.05
	177	6835	1.05
	181	6855	1.04
185	6875	1.16	

Conducted Power (2T1S)_LPI			
UNII-7 Ant 1			
Mode	Channel	Frequency	SISO Ant 1 Avg. Power
802.11a	121	6555	1.12
	125	6575	1.11
	129	6595	1.25
	133	6615	1.16
	137	6635	1.19
	141	6655	1.23
	145	6675	1.22
	149	6695	1.25
	153	6715	1.21
	157	6735	1.14
	161	6755	1.19
	165	6775	1.18
	169	6795	1.14
	173	6815	1.13
	177	6835	1.11
	181	6855	1.45
185	6875	1.41	

Conducted Power (2T1S)_LPI			
UNII-7 Ant 0+1			
Mode	Channel	Frequency	MIMO Ant 0+1 Avg. Power
802.11a	121	6555	4.09
	125	6575	4.08
	129	6595	4.22
	133	6615	4.1
	137	6635	4.2
	141	6655	4.19
	145	6675	4.15
	149	6695	4.12
	153	6715	4.14
	157	6735	4.12
	161	6755	4.19
	165	6775	4.19
	169	6795	4.11
	173	6815	4.1
	177	6835	4.09
	181	6855	4.27
185	6875	4.33	

Conducted Power (2T1S)_LPI			
UNII-8 Ant 0			
Mode	Channel	Frequency	SISO Ant 0 Avg. Power
802.11a	189	6895	0.9
	193	6915	0.94
	197	6935	0.94
	201	6955	0.91
	205	6975	0.95
	209	6995	1.31
	213	7015	0.92
	217	7035	0.93
	221	7055	0.93
	225	7075	0.92
	229	7095	0.91
	233	7115	1

Conducted Power (2T1S)_LPI			
UNII-8 Ant 1			
Mode	Channel	Frequency	SISO Ant 1 Avg. Power
802.11a	189	6895	1.86
	193	6915	1.86
	197	6935	1.88
	201	6955	1.9
	205	6975	1.86
	209	6995	1.99
	213	7015	1.88
	217	7035	1.85
	221	7055	1.89
	225	7075	1.86
	229	7095	1.88
	233	7115	1.94

Conducted Power (2T1S)_LPI			
UNII-8 Ant 0+1			
Mode	Channel	Frequency	MIMO Ant 0+1 Avg. Power
802.11a	189	6895	4.42
	193	6915	4.43
	197	6935	4.45
	201	6955	4.44
	205	6975	4.44
	209	6995	4.67
	213	7015	4.44
	217	7035	4.42
	221	7055	4.45
	225	7075	4.43
	229	7095	4.43
	233	7115	4.53



Conducted Power (2T2S)			
WLAN2.4GHz Ant 0			
Mode	Channel	Frequency	SISO Ant 0 Avg. Power
802.11n HT40	3	2422	15.33
	6	2437	15.29
	9	2452	15.18
	10	2457	15.44
	11	2462	15.36



Conducted Power (2T2S)			
WLAN2.4GHz Ant 1			
Mode	Channel	Frequency	SISO Ant 1 Avg. Power
802.11n HT40	3	2422	15.36
	6	2437	15.28
	9	2452	15.31
	10	2457	15.37
	11	2462	15.26



Conducted Power (2T2S)			
WLAN2.4GHz Ant 0+1			
Mode	Channel	Frequency	MIMO Ant 0+1 Avg. Power
802.11n HT40	3	2422	18.36
	6	2437	18.30
	9	2452	18.26
	10	2457	18.38
	11	2462	18.36



BUREAU
VERITAS

Conducted Power (2T2S)			
WLAN 5.3GHz Ant 0			
Mode	Channel	Frequency	SISO Ant 0 Avg. Power
802.11ac VHT160	50	5250	13.81



Conducted Power (2T2S)			
WLAN 5.3GHz Ant 1			
Mode	Channel	Frequency	SISO Ant 1 Avg. Power
802.11ac VHT160	50	5250	13.82



Conducted Power (2T2S)			
WLAN 5.3GHz Ant 0+1			
Mode	Channel	Frequency	MIMO Ant 0+1 Avg. Power
802.11ac VHT160	50	5250	16.83



BUREAU
VERITAS

Conducted Power (2T2S)			
WLAN 5.6GHz Ant 0			
Mode	Channel	Frequency	SISO Ant 0 Avg. Power
802.11ac VHT160	114	5570	13.88



**BUREAU
VERITAS**

Conducted Power (2T2S)			
WLAN 5.6GHz Ant 1			
Mode	Channel	Frequency	SISO Ant 1 Avg. Power
802.11ac VHT160	114	5570	13.86



**BUREAU
VERITAS**

Conducted Power (2T2S)			
WLAN 5.6GHz Ant 0+1			
Mode	Channel	Frequency	MIMO Ant 0+1 Avg. Power
802.11ac VHT160	114	5570	16.88



**BUREAU
VERITAS**

Conducted Power (2T2S)			
WLAN 5.8GHz Ant 0			
Mode	Channel	Frequency	SISO Ant 0 Avg. Power
802.11ac VHT80	155	5775	13.84



BUREAU
VERITAS

Conducted Power (2T2S)			
WLAN 5.8GHz Ant 1			
Mode	Channel	Frequency	SISO Ant 1 Avg. Power
802.11ac VHT80	155	5775	13.87



BUREAU
VERITAS

Conducted Power (2T2S)			
WLAN 5.8GHz Ant 0+1			
Mode	Channel	Frequency	MIMO Ant 0+1 Avg. Power
802.11ac VHT80	155	5775	16.87



BUREAU
VERITAS

Conducted Power (2T2S)			
WLAN 5.9GHz Ant 0			
Mode	Channel	Frequency	SISO Ant 0 Avg. Power
802.11ac VHT160	163	5815	13.88



BUREAU
VERITAS

Conducted Power (2T2S)			
WLAN 5.9GHz Ant 1			
Mode	Channel	Frequency	SISO Ant 1 Avg. Power
802.11ac VHT160	163	5815	13.79



BUREAU
VERITAS

Conducted Power (2T2S)			
WLAN 5.9GHz Ant 0+1			
Mode	Channel	Frequency	MIMO Ant 0+1 Avg. Power
802.11ac VHT160	163	5815	16.85



**BUREAU
VERITAS**

Conducted Power (2T2S)_SP			
UNII-5 Ant 0			
Mode	Channel	Frequency	SISO Ant 0 Avg. Power
802.11ax HE160	15	6025	17.89
	47	6185	17.83
	79	6345	17.72



**BUREAU
VERITAS**

Conducted Power (2T2S)_SP			
UNII-5 Ant 1			
Mode	Channel	Frequency	SISO Ant 1 Avg. Power
802.11ax HE160	15	6025	17.99
	47	6185	17.72
	79	6345	17.84



**BUREAU
VERITAS**

Conducted Power (2T2S)_SP			
UNII-5 Ant 0+1			
Mode	Channel	Frequency	MIMO Ant 0+1 Avg. Power
802.11ax HE160	15	6025	20.99
	47	6185	20.84
	79	6345	20.94



**BUREAU
VERITAS**

Conducted Power (2T2S)_SP			
UNII-7 Ant 0			
Mode	Channel	Frequency	SISO Ant 0 Avg. Power
802.11ax HE160	143	6665	17.73
	175	6825	17.76



**BUREAU
VERITAS**

Conducted Power (2T2S)_SP			
UNII-7 Ant 1			
Mode	Channel	Frequency	SISO Ant 1 Avg. Power
802.11ax HE160	143	6665	17.35
	175	6825	17.91



**BUREAU
VERITAS**

Conducted Power (2T2S)_SP			
UNII-7 Ant 0+1			
Mode	Channel	Frequency	MIMO Ant 0+1 Avg. Power
802.11ax HE160	143	6665	20.8
	175	6825	20.88



Conducted Power (2T2S)_LPI			
UNII-5 Ant 0			
Mode	Channel	Frequency	SISO Ant 0 Avg. Power
802.11ax HE160	15	6025	11.78
	47	6185	11.28
	79	6345	11.67



**BUREAU
VERITAS**

Conducted Power (2T2S)_LPI			
UNII-5 Ant 1			
Mode	Channel	Frequency	SISO Ant 1 Avg. Power
802.11ax HE160	15	6025	12.61
	47	6185	12.88
	79	6345	12.67



Conducted Power (2T2S)_LPI			
UNII-5 Ant 0+1			
Mode	Channel	Frequency	MIMO Ant 0+1 Avg. Power
802.11ax HE160	15	6025	15.23
	47	6185	15.16
	79	6345	15.21



**BUREAU
VERITAS**

Conducted Power (2T2S)_LPI			
UNII-6 Ant 0			
Mode	Channel	Frequency	SISO Ant 0 Avg. Power
802.11ax HE160	111	6505	12.41



BUREAU
VERITAS

Conducted Power (2T2S)_LPI			
UNII-6 Ant 1			
Mode	Channel	Frequency	SISO Ant 1 Avg. Power
802.11ax HE160	111	6505	12.9



**BUREAU
VERITAS**

Conducted Power (2T2S)_LPI			
UNII-6 Ant 0+1			
Mode	Channel	Frequency	MIMO Ant 0+1 Avg. Power
802.11ax HE160	111	6505	15.7



**BUREAU
VERITAS**

Conducted Power (2T2S)_LPI			
UNII-7 Ant 0			
Mode	Channel	Frequency	SISO Ant 0 Avg. Power
802.11ax HE160	143	6665	12.06
	175	6825	11.97



**BUREAU
VERITAS**

Conducted Power (2T2S)_LPI			
UNII-7 Ant 1			
Mode	Channel	Frequency	SISO Ant 1 Avg. Power
802.11ax HE160	143	6665	12.47
	175	6825	12.47



**BUREAU
VERITAS**

Conducted Power (2T2S)_LPI			
UNII-7 Ant 0+1			
Mode	Channel	Frequency	MIMO Ant 0+1 Avg. Power
802.11ax HE160	143	6665	15.28
	175	6825	15.24



**BUREAU
VERITAS**

Conducted Power (2T2S)_LPI			
UNII-8 Ant 0			
Mode	Channel	Frequency	SISO Ant 0 Avg. Power
802.11ax HE160	207	6985	12.65



**BUREAU
VERITAS**

Conducted Power (2T2S)_LPI			
UNII-8 Ant 1			
Mode	Channel	Frequency	SISO Ant 1 Avg. Power
802.11ax HE160	207	6985	12.95



**BUREAU
VERITAS**

Conducted Power (2T2S)_LPI			
UNII-8 Ant 0+1			
Mode	Channel	Frequency	MIMO Ant 0+1 Avg. Power
802.11ax HE160	207	6985	15.81



Bluetooth Ant 0&1			
Mode	Channel	Frequency	SISO Ant 0&1 Avg. Power
BR / EDR	0	2402	12.82
	39	2441	12.69
	78	2480	12.65
LE	0	2402	12.74
	19	2440	12.75
	39	2480	12.63



BUREAU
VERITAS

Appendix F. SAR Incident Power Density Test Result

SAR Results for Body Exposure Condition.

Note:

1. SAR testing for WLAN / BT was performed on the maximum power mode.
2. Per KDB 388624 APPENDIX OVER6G, the minimum of 5 channels to perform IPD across U-NII 5,6,7 and 8. and measured results were scaled by factor 1.545 to reported power density when measurement uncertainty exceed 30%.



Body SAR Test Result

System & Position						DUT Configuration		SAR							
Plot No.	Band	Mode	Test Position	Separation Distance (mm)	Channel	Mode	Ant Status	Duty Cycle	Crest Factor	Max. Tune-up Power (dBm)	Measured Conducted Power (dBm)	Scaling Factor	Power Drift (dB)	Measured SAR-1g (W/kg)	Scaled SAR-1g (W/kg)
	WLAN2.4G	802.11b	Front Face	5	1	1T1S	Ant 0	100.00	1.00	15.50	15.36	1.03	0.18	0.157	0.16
	WLAN2.4G	802.11b	Rear Face	5	1	1T1S	Ant 0	100.00	1.00	15.50	15.36	1.03	-0.14	0.13	0.13
	WLAN2.4G	802.11b	Left Side	5	1	1T1S	Ant 0	100.00	1.00	15.50	15.36	1.03	-0.11	0.148	0.15
	WLAN2.4G	802.11b	Right Side	5	1	1T1S	Ant 0	100.00	1.00	15.50	15.36	1.03	-0.19	0.293	0.30
	WLAN2.4G	802.11b	Top Side	5	1	1T1S	Ant 0	100.00	1.00	15.50	15.36	1.03	-0.14	0.265	0.27
	WLAN2.4G	802.11b	Bottom Side	5	1	1T1S	Ant 0	100.00	1.00	15.50	15.36	1.03	0.16	0.543	0.56
	WLAN2.4G	802.11b	Front Face	5	1	1T1S	Ant 1	100.00	1.00	15.50	15.36	1.03	-0.13	0.161	0.17
	WLAN2.4G	802.11b	Rear Face	5	1	1T1S	Ant 1	100.00	1.00	15.50	15.36	1.03	-0.07	0.134	0.14
	WLAN2.4G	802.11b	Left Side	5	1	1T1S	Ant 1	100.00	1.00	15.50	15.36	1.03	-0.18	0.152	0.16
	WLAN2.4G	802.11b	Right Side	5	1	1T1S	Ant 1	100.00	1.00	15.50	15.36	1.03	-0.11	0.297	0.31
	WLAN2.4G	802.11b	Top Side	5	1	1T1S	Ant 1	100.00	1.00	15.50	15.36	1.03	-0.01	0.269	0.28
	WLAN2.4G	802.11b	Bottom Side	5	1	1T1S	Ant 1	100.00	1.00	15.50	15.36	1.03	-0.16	0.546	0.56
	WLAN2.4G	802.11b	Front Face	5	1	2T1S	Ant 0	100.00	1.00	15.50	15.12	1.09	0.08	0.178	0.19
	WLAN2.4G	802.11b	Rear Face	5	1	2T1S	Ant 0	100.00	1.00	15.50	15.12	1.09	-0.17	0.151	0.16
	WLAN2.4G	802.11b	Left Side	5	1	2T1S	Ant 0	100.00	1.00	15.50	15.12	1.09	0.12	0.17	0.19
	WLAN2.4G	802.11b	Right Side	5	1	2T1S	Ant 0	100.00	1.00	15.50	15.12	1.09	-0.11	0.314	0.34
	WLAN2.4G	802.11b	Top Side	5	1	2T1S	Ant 0	100.00	1.00	15.50	15.12	1.09	0.06	0.286	0.31
	WLAN2.4G	802.11b	Bottom Side	5	1	2T1S	Ant 0	100.00	1.00	15.50	15.12	1.09	-0.08	0.564	0.61
	WLAN2.4G	802.11b	Front Face	5	1	2T1S	Ant 1	100.00	1.00	15.50	15.37	1.03	-0.12	0.19	0.20
	WLAN2.4G	802.11b	Rear Face	5	1	2T1S	Ant 1	100.00	1.00	15.50	15.37	1.03	0.08	0.146	0.15
	WLAN2.4G	802.11b	Left Side	5	1	2T1S	Ant 1	100.00	1.00	15.50	15.37	1.03	0.14	0.153	0.16
	WLAN2.4G	802.11b	Right Side	5	1	2T1S	Ant 1	100.00	1.00	15.50	15.37	1.03	0.19	0.441	0.45
	WLAN2.4G	802.11b	Top Side	5	1	2T1S	Ant 1	100.00	1.00	15.50	15.37	1.03	-0.02	0.382	0.39
	WLAN2.4G	802.11b	Bottom Side	5	1	2T1S	Ant 1	100.00	1.00	15.50	15.37	1.03	-0.07	0.525	0.54
	WLAN2.4G	802.11b	Front Face	5	1	2T1S	Ant 0+1	100.00	1.00	18.50	18.18	1.08	-0.12	0.239	0.26
	WLAN2.4G	802.11b	Rear Face	5	1	2T1S	Ant 0+1	100.00	1.00	18.50	18.18	1.08	-0.05	0.17	0.18
	WLAN2.4G	802.11b	Left Side	5	1	2T1S	Ant 0+1	100.00	1.00	18.50	18.18	1.08	-0.05	0.187	0.20
	WLAN2.4G	802.11b	Right Side	5	1	2T1S	Ant 0+1	100.00	1.00	18.50	18.18	1.08	0.07	0.389	0.42
	WLAN2.4G	802.11b	Top Side	5	1	2T1S	Ant 0+1	100.00	1.00	18.50	18.18	1.08	-0.02	0.354	0.38
1	WLAN2.4G	802.11b	Bottom Side	5	1	2T1S	Ant 0+1	100.00	1.00	18.50	18.18	1.08	-0.02	0.574	0.62
	WLAN2.4G	802.11n HT40	Front Face	5	10	2T2S	Ant 0	100.00	1.00	15.50	15.44	1.01	0.03	0.17	0.17
	WLAN2.4G	802.11n HT40	Rear Face	5	10	2T2S	Ant 0	100.00	1.00	15.50	15.44	1.01	0.01	0.142	0.14
	WLAN2.4G	802.11n HT40	Left Side	5	10	2T2S	Ant 0	100.00	1.00	15.50	15.44	1.01	0.05	0.161	0.16
	WLAN2.4G	802.11n HT40	Right Side	5	10	2T2S	Ant 0	100.00	1.00	15.50	15.44	1.01	-0.11	0.305	0.31
	WLAN2.4G	802.11n HT40	Top Side	5	10	2T2S	Ant 0	100.00	1.00	15.50	15.44	1.01	-0.05	0.277	0.28
	WLAN2.4G	802.11n HT40	Bottom Side	5	10	2T2S	Ant 0	100.00	1.00	15.50	15.44	1.01	-0.18	0.555	0.56
	WLAN2.4G	802.11n HT40	Front Face	5	10	2T2S	Ant 1	100.00	1.00	15.50	15.37	1.03	-0.06	0.181	0.19
	WLAN2.4G	802.11n HT40	Rear Face	5	10	2T2S	Ant 1	100.00	1.00	15.50	15.37	1.03	-0.03	0.137	0.14
	WLAN2.4G	802.11n HT40	Left Side	5	10	2T2S	Ant 1	100.00	1.00	15.50	15.37	1.03	0.03	0.144	0.15
	WLAN2.4G	802.11n HT40	Right Side	5	10	2T2S	Ant 1	100.00	1.00	15.50	15.37	1.03	-0.07	0.432	0.44
	WLAN2.4G	802.11n HT40	Top Side	5	10	2T2S	Ant 1	100.00	1.00	15.50	15.37	1.03	-0.03	0.374	0.39
	WLAN2.4G	802.11n HT40	Bottom Side	5	10	2T2S	Ant 1	100.00	1.00	15.50	15.37	1.03	-0.09	0.517	0.53
	WLAN2.4G	802.11n HT40	Front Face	5	10	2T2S	Ant 0+1	100.00	1.00	18.50	18.38	1.03	-0.16	0.23	0.24
	WLAN2.4G	802.11n HT40	Rear Face	5	10	2T2S	Ant 0+1	100.00	1.00	18.50	18.38	1.03	0.01	0.161	0.17
	WLAN2.4G	802.11n HT40	Left Side	5	10	2T2S	Ant 0+1	100.00	1.00	18.50	18.38	1.03	-0.15	0.178	0.18
	WLAN2.4G	802.11n HT40	Right Side	5	10	2T2S	Ant 0+1	100.00	1.00	18.50	18.38	1.03	0.02	0.381	0.39
	WLAN2.4G	802.11n HT40	Top Side	5	10	2T2S	Ant 0+1	100.00	1.00	18.50	18.38	1.03	0.06	0.346	0.36
	WLAN2.4G	802.11n HT40	Bottom Side	5	10	2T2S	Ant 0+1	100.00	1.00	18.50	18.38	1.03	-0.11	0.565	0.58
	WLAN2.4G	802.11b	Bottom Side	5	6	2T1S	Ant 0+1	100.00	1.00	18.50	17.99	1.12	-0.08	0.545	0.61
	WLAN2.4G	802.11b	Bottom Side	5	11	2T1S	Ant 0+1	100.00	1.00	18.50	17.92	1.14	0.11	0.512	0.58
	WLAN2.4G	802.11b	Bottom Side	5	12	2T1S	Ant 0+1	100.00	1.00	18.50	17.95	1.14	0.06	0.523	0.60
	WLAN2.4G	802.11b	Bottom Side	5	13	2T1S	Ant 0+1	100.00	1.00	14.00	13.64	1.09	-0.13	0.52	0.57



Body SAR Test Result

System & Position						DUT Configuration		SAR							
Plot No.	Band	Mode	Test Position	Separation Distance (mm)	Channel	Mode	Ant Status	Duty Cycle	Crest Factor	Max. Tune-up Power (dBm)	Measured Conducted Power (dBm)	Scaling Factor	Power Drift (dB)	Measured SAR-1g (W/kg)	Scaled SAR-1g (W/kg)
	WLAN5.3G	802.11ac VHT160	Front Face	5	50	1T1S	Ant 0	100.00	1.00	14.00	13.85	1.04	0.03	0.197	0.20
	WLAN5.3G	802.11ac VHT160	Rear Face	5	50	1T1S	Ant 0	100.00	1.00	14.00	13.85	1.04	0.15	0.058	0.06
	WLAN5.3G	802.11ac VHT160	Left Side	5	50	1T1S	Ant 0	100.00	1.00	14.00	13.85	1.04	0.01	0.332	0.35
	WLAN5.3G	802.11ac VHT160	Right Side	5	50	1T1S	Ant 0	100.00	1.00	14.00	13.85	1.04	-0.16	0.041	0.04
	WLAN5.3G	802.11ac VHT160	Top Side	5	50	1T1S	Ant 0	100.00	1.00	14.00	13.85	1.04	-0.14	0.216	0.22
	WLAN5.3G	802.11ac VHT160	Bottom Side	5	50	1T1S	Ant 0	100.00	1.00	14.00	13.85	1.04	0.17	0.518	0.54
	WLAN5.3G	802.11ac VHT160	Front Face	5	50	1T1S	Ant 1	100.00	1.00	14.00	13.85	1.04	-0.14	0.199	0.21
	WLAN5.3G	802.11ac VHT160	Rear Face	5	50	1T1S	Ant 1	100.00	1.00	14.00	13.85	1.04	-0.18	0.06	0.06
	WLAN5.3G	802.11ac VHT160	Left Side	5	50	1T1S	Ant 1	100.00	1.00	14.00	13.85	1.04	0.11	0.334	0.35
	WLAN5.3G	802.11ac VHT160	Right Side	5	50	1T1S	Ant 1	100.00	1.00	14.00	13.85	1.04	-0.02	0.043	0.04
	WLAN5.3G	802.11ac VHT160	Top Side	5	50	1T1S	Ant 1	100.00	1.00	14.00	13.85	1.04	-0.11	0.217	0.23
	WLAN5.3G	802.11ac VHT160	Bottom Side	5	50	1T1S	Ant 1	100.00	1.00	14.00	13.85	1.04	0.04	0.519	0.54
	WLAN5.3G	802.11a	Front Face	5	60	2T1S	Ant 0	100.00	1.00	14.00	13.79	1.05	-0.11	0.191	0.20
	WLAN5.3G	802.11a	Rear Face	5	60	2T1S	Ant 0	100.00	1.00	14.00	13.79	1.05	0.06	0.052	0.05
	WLAN5.3G	802.11a	Left Side	5	60	2T1S	Ant 0	100.00	1.00	14.00	13.79	1.05	-0.09	0.326	0.34
	WLAN5.3G	802.11a	Right Side	5	60	2T1S	Ant 0	100.00	1.00	14.00	13.79	1.05	-0.03	0.034	0.04
	WLAN5.3G	802.11a	Top Side	5	60	2T1S	Ant 0	100.00	1.00	14.00	13.79	1.05	0.18	0.209	0.22
	WLAN5.3G	802.11a	Bottom Side	5	60	2T1S	Ant 0	100.00	1.00	14.00	13.79	1.05	0.03	0.511	0.54
	WLAN5.3G	802.11a	Front Face	5	60	2T1S	Ant 1	100.00	1.00	14.00	13.77	1.05	-0.19	0.275	0.29
	WLAN5.3G	802.11a	Rear Face	5	60	2T1S	Ant 1	100.00	1.00	14.00	13.77	1.05	0.13	0.099	0.10
	WLAN5.3G	802.11a	Left Side	5	60	2T1S	Ant 1	100.00	1.00	14.00	13.77	1.05	0.06	0.329	0.35
	WLAN5.3G	802.11a	Right Side	5	60	2T1S	Ant 1	100.00	1.00	14.00	13.77	1.05	-0.01	0.057	0.06
	WLAN5.3G	802.11a	Top Side	5	60	2T1S	Ant 1	100.00	1.00	14.00	13.77	1.05	0.07	0.307	0.32
	WLAN5.3G	802.11a	Bottom Side	5	60	2T1S	Ant 1	100.00	1.00	14.00	13.77	1.05	0.03	0.527	0.55
	WLAN5.3G	802.11a	Front Face	5	60	2T1S	Ant 0+1	100.00	1.00	17.00	16.79	1.05	-0.02	0.287	0.30
	WLAN5.3G	802.11a	Rear Face	5	60	2T1S	Ant 0+1	100.00	1.00	17.00	16.79	1.05	-0.1	0.113	0.12
	WLAN5.3G	802.11a	Left Side	5	60	2T1S	Ant 0+1	100.00	1.00	17.00	16.79	1.05	-0.13	0.528	0.55
	WLAN5.3G	802.11a	Right Side	5	60	2T1S	Ant 0+1	100.00	1.00	17.00	16.79	1.05	0.06	0.067	0.07
	WLAN5.3G	802.11a	Top Side	5	60	2T1S	Ant 0+1	100.00	1.00	17.00	16.79	1.05	0.01	0.364	0.38
	WLAN5.3G	802.11a	Bottom Side	5	60	2T1S	Ant 0+1	100.00	1.00	17.00	16.79	1.05	0.13	0.628	0.66
	WLAN5.3G	802.11ac VHT160	Front Face	5	50	2T2S	Ant 0	100.00	1.00	14.00	13.81	1.04	-0.15	0.207	0.22
	WLAN5.3G	802.11ac VHT160	Rear Face	5	50	2T2S	Ant 0	100.00	1.00	14.00	13.81	1.04	0.15	0.068	0.07
	WLAN5.3G	802.11ac VHT160	Left Side	5	50	2T2S	Ant 0	100.00	1.00	14.00	13.81	1.04	0.05	0.342	0.36
	WLAN5.3G	802.11ac VHT160	Right Side	5	50	2T2S	Ant 0	100.00	1.00	14.00	13.81	1.04	-0.18	0.051	0.05
	WLAN5.3G	802.11ac VHT160	Top Side	5	50	2T2S	Ant 0	100.00	1.00	14.00	13.81	1.04	0.11	0.226	0.24
	WLAN5.3G	802.11ac VHT160	Bottom Side	5	50	2T2S	Ant 0	100.00	1.00	14.00	13.81	1.04	-0.01	0.527	0.55
	WLAN5.3G	802.11ac VHT160	Front Face	5	50	2T2S	Ant 1	100.00	1.00	14.00	13.82	1.04	-0.14	0.291	0.30
	WLAN5.3G	802.11ac VHT160	Rear Face	5	50	2T2S	Ant 1	100.00	1.00	14.00	13.82	1.04	-0.09	0.115	0.12
	WLAN5.3G	802.11ac VHT160	Left Side	5	50	2T2S	Ant 1	100.00	1.00	14.00	13.82	1.04	0.05	0.345	0.36
	WLAN5.3G	802.11ac VHT160	Right Side	5	50	2T2S	Ant 1	100.00	1.00	14.00	13.82	1.04	-0.11	0.074	0.08
	WLAN5.3G	802.11ac VHT160	Top Side	5	50	2T2S	Ant 1	100.00	1.00	14.00	13.82	1.04	0.16	0.323	0.34
	WLAN5.3G	802.11ac VHT160	Bottom Side	5	50	2T2S	Ant 1	100.00	1.00	14.00	13.82	1.04	-0.15	0.544	0.57
	WLAN5.3G	802.11ac VHT160	Front Face	5	50	2T2S	Ant 0+1	100.00	1.00	17.00	16.83	1.04	0.19	0.304	0.32
	WLAN5.3G	802.11ac VHT160	Rear Face	5	50	2T2S	Ant 0+1	100.00	1.00	17.00	16.83	1.04	0.13	0.129	0.13
	WLAN5.3G	802.11ac VHT160	Left Side	5	50	2T2S	Ant 0+1	100.00	1.00	17.00	16.83	1.04	-0.06	0.544	0.57
	WLAN5.3G	802.11ac VHT160	Right Side	5	50	2T2S	Ant 0+1	100.00	1.00	17.00	16.83	1.04	0.07	0.083	0.09
	WLAN5.3G	802.11ac VHT160	Top Side	5	50	2T2S	Ant 0+1	100.00	1.00	17.00	16.83	1.04	0.15	0.38	0.40
2	WLAN5.3G	802.11ac VHT160	Bottom Side	5	50	2T2S	Ant 0+1	100.00	1.00	17.00	16.83	1.04	-0.09	0.645	0.67



Body SAR Test Result

System & Position						DUT Configuration		SAR							
Plot No.	Band	Mode	Test Position	Separation Distance (mm)	Channel	Mode	Ant Status	Duty Cycle	Crest Factor	Max. Tune-up Power (dBm)	Measured Conducted Power (dBm)	Scaling Factor	Power Drift (dB)	Measured SAR-1g (W/kg)	Scaled SAR-1g (W/kg)
	WLAN5.6G	802.11ac VHT160	Front Face	5	114	1T1S	Ant 0	100.00	1.00	14.00	13.83	1.04	-0.04	0.228	0.24
	WLAN5.6G	802.11ac VHT160	Rear Face	5	114	1T1S	Ant 0	100.00	1.00	14.00	13.83	1.04	0.01	0.062	0.06
	WLAN5.6G	802.11ac VHT160	Left Side	5	114	1T1S	Ant 0	100.00	1.00	14.00	13.83	1.04	0.04	0.389	0.40
	WLAN5.6G	802.11ac VHT160	Right Side	5	114	1T1S	Ant 0	100.00	1.00	14.00	13.83	1.04	0.11	0.041	0.04
	WLAN5.6G	802.11ac VHT160	Top Side	5	114	1T1S	Ant 0	100.00	1.00	14.00	13.83	1.04	-0.07	0.25	0.26
	WLAN5.6G	802.11ac VHT160	Bottom Side	5	114	1T1S	Ant 0	100.00	1.00	14.00	13.83	1.04	0.05	0.61	0.63
	WLAN5.6G	802.11ac VHT160	Front Face	5	114	1T1S	Ant 1	100.00	1.00	14.00	13.83	1.04	0.03	0.231	0.24
	WLAN5.6G	802.11ac VHT160	Rear Face	5	114	1T1S	Ant 1	100.00	1.00	14.00	13.83	1.04	-0.08	0.064	0.07
	WLAN5.6G	802.11ac VHT160	Left Side	5	114	1T1S	Ant 1	100.00	1.00	14.00	13.83	1.04	-0.05	0.392	0.41
	WLAN5.6G	802.11ac VHT160	Right Side	5	114	1T1S	Ant 1	100.00	1.00	14.00	13.83	1.04	0.02	0.043	0.04
	WLAN5.6G	802.11ac VHT160	Top Side	5	114	1T1S	Ant 1	100.00	1.00	14.00	13.83	1.04	0.04	0.256	0.27
	WLAN5.6G	802.11ac VHT160	Bottom Side	5	114	1T1S	Ant 1	100.00	1.00	14.00	13.83	1.04	0.09	0.615	0.64
	WLAN5.6G	802.11a	Front Face	5	116	2T1S	Ant 0	100.00	1.00	14.00	13.85	1.04	0.12	0.237	0.25
	WLAN5.6G	802.11a	Rear Face	5	116	2T1S	Ant 0	100.00	1.00	14.00	13.85	1.04	-0.18	0.071	0.07
	WLAN5.6G	802.11a	Left Side	5	116	2T1S	Ant 0	100.00	1.00	14.00	13.85	1.04	-0.08	0.398	0.41
	WLAN5.6G	802.11a	Right Side	5	116	2T1S	Ant 0	100.00	1.00	14.00	13.85	1.04	0.15	0.051	0.05
	WLAN5.6G	802.11a	Top Side	5	116	2T1S	Ant 0	100.00	1.00	14.00	13.85	1.04	0.03	0.26	0.27
	WLAN5.6G	802.11a	Bottom Side	5	116	2T1S	Ant 0	100.00	1.00	14.00	13.85	1.04	0.09	0.62	0.64
	WLAN5.6G	802.11a	Front Face	5	116	2T1S	Ant 1	100.00	1.00	14.00	13.87	1.03	-0.01	0.338	0.35
	WLAN5.6G	802.11a	Rear Face	5	116	2T1S	Ant 1	100.00	1.00	14.00	13.87	1.03	-0.03	0.128	0.13
	WLAN5.6G	802.11a	Left Side	5	116	2T1S	Ant 1	100.00	1.00	14.00	13.87	1.03	-0.08	0.402	0.41
	WLAN5.6G	802.11a	Right Side	5	116	2T1S	Ant 1	100.00	1.00	14.00	13.87	1.03	0.13	0.078	0.08
	WLAN5.6G	802.11a	Top Side	5	116	2T1S	Ant 1	100.00	1.00	14.00	13.87	1.03	-0.08	0.376	0.39
	WLAN5.6G	802.11a	Bottom Side	5	116	2T1S	Ant 1	100.00	1.00	14.00	13.87	1.03	-0.06	0.639	0.66
	WLAN5.6G	802.11a	Front Face	5	116	2T1S	Ant 0+1	100.00	1.00	17.00	16.87	1.03	0.02	0.353	0.36
	WLAN5.6G	802.11a	Rear Face	5	116	2T1S	Ant 0+1	100.00	1.00	17.00	16.87	1.03	-0.18	0.144	0.15
	WLAN5.6G	802.11a	Left Side	5	116	2T1S	Ant 0+1	100.00	1.00	17.00	16.87	1.03	0.12	0.64	0.66
	WLAN5.6G	802.11a	Right Side	5	116	2T1S	Ant 0+1	100.00	1.00	17.00	16.87	1.03	-0.15	0.09	0.09
	WLAN5.6G	802.11a	Top Side	5	116	2T1S	Ant 0+1	100.00	1.00	17.00	16.87	1.03	0.16	0.444	0.46
	WLAN5.6G	802.11a	Bottom Side	5	116	2T1S	Ant 0+1	100.00	1.00	17.00	16.87	1.03	0.08	0.75	0.77
	WLAN5.6G	802.11ac VHT160	Front Face	5	114	2T2S	Ant 0	100.00	1.00	14.00	13.88	1.03	0.03	0.228	0.23
	WLAN5.6G	802.11ac VHT160	Rear Face	5	114	2T2S	Ant 0	100.00	1.00	14.00	13.88	1.03	0.04	0.062	0.06
	WLAN5.6G	802.11ac VHT160	Left Side	5	114	2T2S	Ant 0	100.00	1.00	14.00	13.88	1.03	0.18	0.389	0.40
	WLAN5.6G	802.11ac VHT160	Right Side	5	114	2T2S	Ant 0	100.00	1.00	14.00	13.88	1.03	0.18	0.041	0.04
	WLAN5.6G	802.11ac VHT160	Top Side	5	114	2T2S	Ant 0	100.00	1.00	14.00	13.88	1.03	0.03	0.25	0.26
	WLAN5.6G	802.11ac VHT160	Bottom Side	5	114	2T2S	Ant 0	100.00	1.00	14.00	13.88	1.03	0.13	0.61	0.63
	WLAN5.6G	802.11ac VHT160	Front Face	5	114	2T2S	Ant 1	100.00	1.00	14.00	13.86	1.03	0.09	0.329	0.34
	WLAN5.6G	802.11ac VHT160	Rear Face	5	114	2T2S	Ant 1	100.00	1.00	14.00	13.86	1.03	-0.17	0.118	0.12
	WLAN5.6G	802.11ac VHT160	Left Side	5	114	2T2S	Ant 1	100.00	1.00	14.00	13.86	1.03	-0.13	0.393	0.40
	WLAN5.6G	802.11ac VHT160	Right Side	5	114	2T2S	Ant 1	100.00	1.00	14.00	13.86	1.03	0.03	0.068	0.07
	WLAN5.6G	802.11ac VHT160	Top Side	5	114	2T2S	Ant 1	100.00	1.00	14.00	13.86	1.03	0.01	0.366	0.38
	WLAN5.6G	802.11ac VHT160	Bottom Side	5	114	2T2S	Ant 1	100.00	1.00	14.00	13.86	1.03	-0.17	0.629	0.65
	WLAN5.6G	802.11ac VHT160	Front Face	5	114	2T2S	Ant 0+1	100.00	1.00	17.00	16.88	1.03	0.07	0.343	0.35
	WLAN5.6G	802.11ac VHT160	Rear Face	5	114	2T2S	Ant 0+1	100.00	1.00	17.00	16.88	1.03	0.06	0.134	0.14
	WLAN5.6G	802.11ac VHT160	Left Side	5	114	2T2S	Ant 0+1	100.00	1.00	17.00	16.88	1.03	0.19	0.63	0.65
	WLAN5.6G	802.11ac VHT160	Right Side	5	114	2T2S	Ant 0+1	100.00	1.00	17.00	16.88	1.03	0.13	0.08	0.08
	WLAN5.6G	802.11ac VHT160	Top Side	5	114	2T2S	Ant 0+1	100.00	1.00	17.00	16.88	1.03	0.18	0.434	0.45
	WLAN5.6G	802.11ac VHT160	Bottom Side	5	114	2T2S	Ant 0+1	100.00	1.00	17.00	16.88	1.03	0.06	0.74	0.76
3	WLAN5.6G	802.11a	Bottom Side	5	100	2T1S	Ant 0+1	100.00	1.00	17.00	16.79	1.05	0.03	0.756	0.79
	WLAN5.6G	802.11a	Bottom Side	5	120	2T1S	Ant 0+1	100.00	1.00	17.00	16.78	1.05	0.09	0.747	0.78
	WLAN5.6G	802.11a	Bottom Side	5	124	2T1S	Ant 0+1	100.00	1.00	17.00	16.80	1.05	-0.08	0.743	0.78
	WLAN5.6G	802.11a	Bottom Side	5	132	2T1S	Ant 0+1	100.00	1.00	17.00	16.82	1.04	-0.15	0.74	0.77
	WLAN5.6G	802.11a	Bottom Side	5	140	2T1S	Ant 0+1	100.00	1.00	17.00	16.84	1.04	0.16	0.739	0.77
	WLAN5.6G	802.11a	Bottom Side	5	144	2T1S	Ant 0+1	100.00	1.00	17.00	16.85	1.04	0.05	0.749	0.78



Body SAR Test Result

System & Position						DUT Configuration		SAR							
Plot No.	Band	Mode	Test Position	Separation Distance (mm)	Channel	Mode	Ant Status	Duty Cycle	Crest Factor	Max. Tune-up Power (dBm)	Measured Conducted Power (dBm)	Scaling Factor	Power Drift (dB)	Measured SAR-1g (W/kg)	Scaled SAR-1g (W/kg)
	WLAN5.8G	802.11ac VHT80	Front Face	5	155	1T1S	Ant 0	100.00	1.00	14.00	13.89	1.03	-0.15	0.226	0.23
	WLAN5.8G	802.11ac VHT80	Rear Face	5	155	1T1S	Ant 0	100.00	1.00	14.00	13.89	1.03	0.13	0.063	0.06
	WLAN5.8G	802.11ac VHT80	Left Side	5	155	1T1S	Ant 0	100.00	1.00	14.00	13.89	1.03	0.07	0.383	0.39
	WLAN5.8G	802.11ac VHT80	Right Side	5	155	1T1S	Ant 0	100.00	1.00	14.00	13.89	1.03	0.01	0.043	0.04
	WLAN5.8G	802.11ac VHT80	Top Side	5	155	1T1S	Ant 0	100.00	1.00	14.00	13.89	1.03	0.19	0.247	0.25
	WLAN5.8G	802.11ac VHT80	Bottom Side	5	155	1T1S	Ant 0	100.00	1.00	14.00	13.89	1.03	0.19	0.6	0.62
	WLAN5.8G	802.11ac VHT80	Front Face	5	155	1T1S	Ant 1	100.00	1.00	14.00	13.89	1.03	-0.16	0.227	0.23
	WLAN5.8G	802.11ac VHT80	Rear Face	5	155	1T1S	Ant 1	100.00	1.00	14.00	13.89	1.03	0.12	0.065	0.07
	WLAN5.8G	802.11ac VHT80	Left Side	5	155	1T1S	Ant 1	100.00	1.00	14.00	13.89	1.03	0.04	0.385	0.40
	WLAN5.8G	802.11ac VHT80	Right Side	5	155	1T1S	Ant 1	100.00	1.00	14.00	13.89	1.03	-0.11	0.045	0.05
	WLAN5.8G	802.11ac VHT80	Top Side	5	155	1T1S	Ant 1	100.00	1.00	14.00	13.89	1.03	0.12	0.249	0.26
	WLAN5.8G	802.11ac VHT80	Bottom Side	5	155	1T1S	Ant 1	100.00	1.00	14.00	13.89	1.03	0.05	0.602	0.62
	WLAN5.8G	802.11a	Front Face	5	149	2T1S	Ant 0	100.00	1.00	14.00	13.91	1.02	-0.18	0.232	0.24
	WLAN5.8G	802.11a	Rear Face	5	149	2T1S	Ant 0	100.00	1.00	14.00	13.91	1.02	0.12	0.07	0.07
	WLAN5.8G	802.11a	Left Side	5	149	2T1S	Ant 0	100.00	1.00	14.00	13.91	1.02	0.08	0.39	0.40
	WLAN5.8G	802.11a	Right Side	5	149	2T1S	Ant 0	100.00	1.00	14.00	13.91	1.02	-0.14	0.05	0.05
	WLAN5.8G	802.11a	Top Side	5	149	2T1S	Ant 0	100.00	1.00	14.00	13.91	1.02	0.05	0.254	0.26
	WLAN5.8G	802.11a	Bottom Side	5	149	2T1S	Ant 0	100.00	1.00	14.00	13.91	1.02	0.05	0.606	0.62
	WLAN5.8G	802.11a	Front Face	5	149	2T1S	Ant 1	100.00	1.00	14.00	13.89	1.03	0.14	0.331	0.34
	WLAN5.8G	802.11a	Rear Face	5	149	2T1S	Ant 1	100.00	1.00	14.00	13.89	1.03	-0.07	0.125	0.13
	WLAN5.8G	802.11a	Left Side	5	149	2T1S	Ant 1	100.00	1.00	14.00	13.89	1.03	-0.18	0.394	0.41
	WLAN5.8G	802.11a	Right Side	5	149	2T1S	Ant 1	100.00	1.00	14.00	13.89	1.03	0.06	0.076	0.08
	WLAN5.8G	802.11a	Top Side	5	149	2T1S	Ant 1	100.00	1.00	14.00	13.89	1.03	-0.03	0.368	0.38
	WLAN5.8G	802.11a	Bottom Side	5	149	2T1S	Ant 1	100.00	1.00	14.00	13.89	1.03	0.01	0.625	0.64
	WLAN5.8G	802.11a	Front Face	5	149	2T1S	Ant 0+1	100.00	1.00	17.00	16.91	1.02	-0.03	0.345	0.35
	WLAN5.8G	802.11a	Rear Face	5	149	2T1S	Ant 0+1	100.00	1.00	17.00	16.91	1.02	0.08	0.141	0.14
	WLAN5.8G	802.11a	Left Side	5	149	2T1S	Ant 0+1	100.00	1.00	17.00	16.91	1.02	-0.01	0.626	0.64
	WLAN5.8G	802.11a	Right Side	5	149	2T1S	Ant 0+1	100.00	1.00	17.00	16.91	1.02	0.14	0.088	0.09
	WLAN5.8G	802.11a	Top Side	5	149	2T1S	Ant 0+1	100.00	1.00	17.00	16.91	1.02	-0.08	0.434	0.44
	WLAN5.8G	802.11a	Bottom Side	5	149	2T1S	Ant 0+1	100.00	1.00	17.00	16.91	1.02	-0.18	0.743	0.76
	WLAN5.8G	802.11ac VHT80	Front Face	5	155	2T2S	Ant 0	100.00	1.00	14.00	13.84	1.04	0.13	0.245	0.25
	WLAN5.8G	802.11ac VHT80	Rear Face	5	155	2T2S	Ant 0	100.00	1.00	14.00	13.84	1.04	-0.06	0.082	0.09
	WLAN5.8G	802.11ac VHT80	Left Side	5	155	2T2S	Ant 0	100.00	1.00	14.00	13.84	1.04	-0.04	0.402	0.42
	WLAN5.8G	802.11ac VHT80	Right Side	5	155	2T2S	Ant 0	100.00	1.00	14.00	13.84	1.04	-0.15	0.062	0.06
	WLAN5.8G	802.11ac VHT80	Top Side	5	155	2T2S	Ant 0	100.00	1.00	14.00	13.84	1.04	-0.17	0.266	0.28
	WLAN5.8G	802.11ac VHT80	Bottom Side	5	155	2T2S	Ant 0	100.00	1.00	14.00	13.84	1.04	-0.15	0.619	0.64
	WLAN5.8G	802.11ac VHT80	Front Face	5	155	2T2S	Ant 1	100.00	1.00	14.00	13.87	1.03	-0.07	0.343	0.35
	WLAN5.8G	802.11ac VHT80	Rear Face	5	155	2T2S	Ant 1	100.00	1.00	14.00	13.87	1.03	0.09	0.137	0.14
	WLAN5.8G	802.11ac VHT80	Left Side	5	155	2T2S	Ant 1	100.00	1.00	14.00	13.87	1.03	0.01	0.406	0.42
	WLAN5.8G	802.11ac VHT80	Right Side	5	155	2T2S	Ant 1	100.00	1.00	14.00	13.87	1.03	-0.07	0.089	0.09
	WLAN5.8G	802.11ac VHT80	Top Side	5	155	2T2S	Ant 1	100.00	1.00	14.00	13.87	1.03	0.13	0.38	0.39
	WLAN5.8G	802.11ac VHT80	Bottom Side	5	155	2T2S	Ant 1	100.00	1.00	14.00	13.87	1.03	-0.06	0.638	0.66
	WLAN5.8G	802.11ac VHT80	Front Face	5	155	2T2S	Ant 0+1	100.00	1.00	17.00	16.87	1.03	-0.04	0.358	0.37
	WLAN5.8G	802.11ac VHT80	Rear Face	5	155	2T2S	Ant 0+1	100.00	1.00	17.00	16.87	1.03	-0.01	0.153	0.16
	WLAN5.8G	802.11ac VHT80	Left Side	5	155	2T2S	Ant 0+1	100.00	1.00	17.00	16.87	1.03	-0.19	0.639	0.66
	WLAN5.8G	802.11ac VHT80	Right Side	5	155	2T2S	Ant 0+1	100.00	1.00	17.00	16.87	1.03	-0.07	0.1	0.10
	WLAN5.8G	802.11ac VHT80	Top Side	5	155	2T2S	Ant 0+1	100.00	1.00	17.00	16.87	1.03	-0.15	0.447	0.46
4	WLAN5.8G	802.11ac VHT80	Bottom Side	5	155	2T2S	Ant 0+1	100.00	1.00	17.00	16.87	1.03	-0.12	0.756	0.78



Body SAR Test Result

System & Position						DUT Configuration		SAR							
Plot No.	Band	Mode	Test Position	Separation Distance (mm)	Channel	Mode	Ant Status	Duty Cycle	Crest Factor	Max. Tune-up Power (dBm)	Measured Conducted Power (dBm)	Scaling Factor	Power Drift (dB)	Measured SAR-1g (W/kg)	Scaled SAR-1g (W/kg)
	WLAN5.9G	802.11ac VHT160	Front Face	5	163	1T1S	Ant 0	100.00	1.00	14.00	13.88	1.03	-0.16	0.21	0.22
	WLAN5.9G	802.11ac VHT160	Rear Face	5	163	1T1S	Ant 0	100.00	1.00	14.00	13.88	1.03	-0.11	0.059	0.06
	WLAN5.9G	802.11ac VHT160	Left Side	5	163	1T1S	Ant 0	100.00	1.00	14.00	13.88	1.03	0.07	0.357	0.37
	WLAN5.9G	802.11ac VHT160	Right Side	5	163	1T1S	Ant 0	100.00	1.00	14.00	13.88	1.03	0.15	0.04	0.04
	WLAN5.9G	802.11ac VHT160	Top Side	5	163	1T1S	Ant 0	100.00	1.00	14.00	13.88	1.03	0.19	0.23	0.24
	WLAN5.9G	802.11ac VHT160	Bottom Side	5	163	1T1S	Ant 0	100.00	1.00	14.00	13.88	1.03	0.16	0.558	0.57
	WLAN5.9G	802.11ac VHT160	Front Face	5	163	1T1S	Ant 1	100.00	1.00	14.00	13.88	1.03	0.12	0.212	0.22
	WLAN5.9G	802.11ac VHT160	Rear Face	5	163	1T1S	Ant 1	100.00	1.00	14.00	13.88	1.03	0.09	0.061	0.06
	WLAN5.9G	802.11ac VHT160	Left Side	5	163	1T1S	Ant 1	100.00	1.00	14.00	13.88	1.03	0.13	0.359	0.37
	WLAN5.9G	802.11ac VHT160	Right Side	5	163	1T1S	Ant 1	100.00	1.00	14.00	13.88	1.03	0.15	0.042	0.04
	WLAN5.9G	802.11ac VHT160	Top Side	5	163	1T1S	Ant 1	100.00	1.00	14.00	13.88	1.03	-0.11	0.232	0.24
	WLAN5.9G	802.11ac VHT160	Bottom Side	5	163	1T1S	Ant 1	100.00	1.00	14.00	13.88	1.03	0.01	0.56	0.58
	WLAN5.9G	802.11a	Front Face	5	177	2T1S	Ant 0	100.00	1.00	14.00	13.88	1.03	-0.14	0.216	0.22
	WLAN5.9G	802.11a	Rear Face	5	177	2T1S	Ant 0	100.00	1.00	14.00	13.88	1.03	0.11	0.065	0.07
	WLAN5.9G	802.11a	Left Side	5	177	2T1S	Ant 0	100.00	1.00	14.00	13.88	1.03	0.14	0.363	0.37
	WLAN5.9G	802.11a	Right Side	5	177	2T1S	Ant 0	100.00	1.00	14.00	13.88	1.03	-0.06	0.046	0.05
	WLAN5.9G	802.11a	Top Side	5	177	2T1S	Ant 0	100.00	1.00	14.00	13.88	1.03	-0.02	0.237	0.24
	WLAN5.9G	802.11a	Bottom Side	5	177	2T1S	Ant 0	100.00	1.00	14.00	13.88	1.03	0.02	0.565	0.58
	WLAN5.9G	802.11a	Front Face	5	177	2T1S	Ant 1	100.00	1.00	14.00	13.83	1.04	-0.09	0.308	0.32
	WLAN5.9G	802.11a	Rear Face	5	177	2T1S	Ant 1	100.00	1.00	14.00	13.83	1.04	-0.13	0.116	0.12
	WLAN5.9G	802.11a	Left Side	5	177	2T1S	Ant 1	100.00	1.00	14.00	13.83	1.04	-0.18	0.367	0.38
	WLAN5.9G	802.11a	Right Side	5	177	2T1S	Ant 1	100.00	1.00	14.00	13.83	1.04	0.15	0.071	0.07
	WLAN5.9G	802.11a	Top Side	5	177	2T1S	Ant 1	100.00	1.00	14.00	13.83	1.04	0.15	0.343	0.36
	WLAN5.9G	802.11a	Bottom Side	5	177	2T1S	Ant 1	100.00	1.00	14.00	13.83	1.04	0.15	0.582	0.61
	WLAN5.9G	802.11a	Front Face	5	177	2T1S	Ant 0+1	100.00	1.00	17.00	16.87	1.03	-0.14	0.321	0.33
	WLAN5.9G	802.11a	Rear Face	5	177	2T1S	Ant 0+1	100.00	1.00	17.00	16.87	1.03	-0.18	0.131	0.13
	WLAN5.9G	802.11a	Left Side	5	177	2T1S	Ant 0+1	100.00	1.00	17.00	16.87	1.03	0.05	0.583	0.60
	WLAN5.9G	802.11a	Right Side	5	177	2T1S	Ant 0+1	100.00	1.00	17.00	16.87	1.03	0.18	0.082	0.08
	WLAN5.9G	802.11a	Top Side	5	177	2T1S	Ant 0+1	100.00	1.00	17.00	16.87	1.03	-0.09	0.405	0.42
	WLAN5.9G	802.11a	Bottom Side	5	177	2T1S	Ant 0+1	100.00	1.00	17.00	16.87	1.03	0.05	0.685	0.71
	WLAN5.9G	802.11ac VHT160	Front Face	5	163	2T2S	Ant 0	100.00	1.00	14.00	13.88	1.03	0.19	0.228	0.23
	WLAN5.9G	802.11ac VHT160	Rear Face	5	163	2T2S	Ant 0	100.00	1.00	14.00	13.88	1.03	0.15	0.076	0.08
	WLAN5.9G	802.11ac VHT160	Left Side	5	163	2T2S	Ant 0	100.00	1.00	14.00	13.88	1.03	-0.17	0.374	0.39
	WLAN5.9G	802.11ac VHT160	Right Side	5	163	2T2S	Ant 0	100.00	1.00	14.00	13.88	1.03	0.09	0.058	0.06
	WLAN5.9G	802.11ac VHT160	Top Side	5	163	2T2S	Ant 0	100.00	1.00	14.00	13.88	1.03	-0.02	0.248	0.26
	WLAN5.9G	802.11ac VHT160	Bottom Side	5	163	2T2S	Ant 0	100.00	1.00	14.00	13.88	1.03	0.04	0.576	0.59
	WLAN5.9G	802.11ac VHT160	Front Face	5	163	2T2S	Ant 1	100.00	1.00	14.00	13.79	1.05	0.02	0.32	0.34
	WLAN5.9G	802.11ac VHT160	Rear Face	5	163	2T2S	Ant 1	100.00	1.00	14.00	13.79	1.05	-0.16	0.128	0.13
	WLAN5.9G	802.11ac VHT160	Left Side	5	163	2T2S	Ant 1	100.00	1.00	14.00	13.79	1.05	-0.07	0.378	0.40
	WLAN5.9G	802.11ac VHT160	Right Side	5	163	2T2S	Ant 1	100.00	1.00	14.00	13.79	1.05	0.09	0.083	0.09
	WLAN5.9G	802.11ac VHT160	Top Side	5	163	2T2S	Ant 1	100.00	1.00	14.00	13.79	1.05	0.19	0.354	0.37
	WLAN5.9G	802.11ac VHT160	Bottom Side	5	163	2T2S	Ant 1	100.00	1.00	14.00	13.79	1.05	0.17	0.594	0.62
	WLAN5.9G	802.11ac VHT160	Front Face	5	163	2T2S	Ant 0+1	100.00	1.00	17.00	16.85	1.04	0.01	0.333	0.35
	WLAN5.9G	802.11ac VHT160	Rear Face	5	163	2T2S	Ant 0+1	100.00	1.00	17.00	16.85	1.04	-0.15	0.143	0.15
	WLAN5.9G	802.11ac VHT160	Left Side	5	163	2T2S	Ant 0+1	100.00	1.00	17.00	16.85	1.04	0.16	0.595	0.62
	WLAN5.9G	802.11ac VHT160	Right Side	5	163	2T2S	Ant 0+1	100.00	1.00	17.00	16.85	1.04	0.02	0.093	0.10
	WLAN5.9G	802.11ac VHT160	Top Side	5	163	2T2S	Ant 0+1	100.00	1.00	17.00	16.85	1.04	0.07	0.416	0.43
5	WLAN5.9G	802.11ac VHT160	Bottom Side	5	163	2T2S	Ant 0+1	100.00	1.00	17.00	16.85	1.04	0.11	0.704	0.73



Body SAR Test Result

Body SAR Test Result															
System & Position						DUT Configuration		SAR							
Plot No.	Band	Mode	Test Position	Separation Distance (mm)	Channel	Mode	Ant Status	Duty Cycle	Crest Factor	Max. Tune-up Power (dBm)	Measured Conducted Power (dBm)	Scaling Factor	Power Drift (dB)	Measured SAR-1g (W/kg)	Scaled SAR-1g (W/kg)
	BT	BDR	Front Face	5	0		Ant 0	76.92	1.30	13.00	12.82	1.04	-0.12	0.062	0.08
	BT	BDR	Rear Face	5	0		Ant 0	76.92	1.30	13.00	12.82	1.04	0.06	0.047	0.06
	BT	BDR	Left Side	5	0		Ant 0	76.92	1.30	13.00	12.82	1.04	0.12	0.05	0.07
	BT	BDR	Right Side	5	0		Ant 0	76.92	1.30	13.00	12.82	1.04	0.17	0.145	0.20
	BT	BDR	Top Side	5	0		Ant 0	76.92	1.30	13.00	12.82	1.04	-0.01	0.126	0.17
	BT	BDR	Bottom Side	5	0		Ant 0	76.92	1.30	13.00	12.82	1.04	0.08	0.169	0.23
	BT	BDR	Front Face	5	0		Ant 1	76.92	1.30	13.00	12.82	1.04	0.11	0.062	0.08
	BT	BDR	Rear Face	5	0		Ant 1	76.92	1.30	13.00	12.82	1.04	0.18	0.048	0.06
	BT	BDR	Left Side	5	0		Ant 1	76.92	1.30	13.00	12.82	1.04	-0.04	0.05	0.07
	BT	BDR	Right Side	5	0		Ant 1	76.92	1.30	13.00	12.82	1.04	-0.14	0.146	0.20
	BT	BDR	Top Side	5	0		Ant 1	76.92	1.30	13.00	12.82	1.04	0.03	0.126	0.17
6	BT	BDR	Bottom Side	5	0		Ant 1	76.92	1.30	13.00	12.82	1.04	0.04	0.174	0.24
	BT	BDR	Bottom Side	5	39		Ant 1	76.92	1.30	13.00	12.69	1.07	0.04	0.17	0.24
	BT	BDR	Bottom Side	5	78		Ant 1	76.92	1.30	13.00	12.65	1.08	0.02	0.169	0.24
		-													



BUREAU VERITAS

SAR and Power Density Test Result

System & Position						DUT Configuration			SAR										Power Density									
Plot No.	Band	Mode	Test Position	Separation Distance (mm)	Channel	Sample	Ant Status	Power Status	Duty Cycle	Crest Factor	Max. Tune-up Power (dBm)	Measured Conducted Power (dBm)	Scaling Factor	Power Drift (dB)	SAR-1g (W/kg)	Scaled SAR-1g (W/kg)	Measured APD W/m ² (4cm ²)	Scaled APD W/m ² (4cm ²)	Grid Step [λ]	iPD [W/m ²]	Scaling Factor for Measurement Uncertainty	Average Area [cm ²]	Power Drift [dB]	Normal psPD [W/m ²]	Scaled Normal psPD [W/m ²]	Total psPD [W/m ²]	Scaled Total psPD [W/m ²]	
	WLAN6G	802.11ax HE160	Front Face	5	207	1T1S	Ant 0	LPI	100.00	1.00	16.50	15.99	1.12	0.15	0.211	0.24	1.81	2.03										
	WLAN6G	802.11ax HE160	Rear Face	5	207	1T1S	Ant 0	LPI	100.00	1.00	16.50	15.99	1.12	0.12	0.028	0.03	0.247	0.28										
	WLAN6G	802.11ax HE160	Left Side	5	207	1T1S	Ant 0	LPI	100.00	1.00	16.50	15.99	1.12	0.06	0.394	0.44	3.38	3.79										
	WLAN6G	802.11ax HE160	Right Side	5	207	1T1S	Ant 0	LPI	100.00	1.00	16.50	15.99	1.12	-0.01	0.00963	0.01	0.082	0.09										
	WLAN6G	802.11ax HE160	Top Side	5	207	1T1S	Ant 0	LPI	100.00	1.00	16.50	15.99	1.12	0.05	0.24	0.27	2.06	2.31										
	WLAN6G	802.11ax HE160	Bottom Side	5	207	1T1S	Ant 0	LPI	100.00	1.00	16.50	15.99	1.12	-0.11	0.423	0.47	3.62	4.05										
	WLAN6G	802.11ax HE160	Front Face	5	207	1T1S	Ant 1	LPI	100.00	1.00	16.50	15.99	1.12	0.13	0.211	0.24	1.81	2.03										
	WLAN6G	802.11ax HE160	Rear Face	5	207	1T1S	Ant 1	LPI	100.00	1.00	16.50	15.99	1.12	-0.08	0.019	0.02	0.164	0.18										
	WLAN6G	802.11ax HE160	Left Side	5	207	1T1S	Ant 1	LPI	100.00	1.00	16.50	15.99	1.12	0.09	0.385	0.43	3.29	3.68										
	WLAN6G	802.11ax HE160	Right Side	5	207	1T1S	Ant 1	LPI	100.00	1.00	16.50	15.99	1.12	0.13	0.048	0.05	0.412	0.46										
	WLAN6G	802.11ax HE160	Top Side	5	207	1T1S	Ant 1	LPI	100.00	1.00	16.50	15.99	1.12	0.11	0.231	0.26	1.97	2.21										
	WLAN6G	802.11ax HE160	Bottom Side	5	207	1T1S	Ant 1	LPI	100.00	1.00	16.50	15.99	1.12	0.01	0.413	0.46	0.357	0.4										
	WLAN6G	802.11a	Front Face	5	209	2T1S	Ant 0	LPI	100.00	1.00	2.00	1.31	1.17	-0.17	0.00963	0.01	0.082	0.1										
	WLAN6G	802.11a	Rear Face	5	209	2T1S	Ant 0	LPI	100.00	1.00	2.00	1.31	1.17	0	0	0.00	0											
	WLAN6G	802.11a	Left Side	5	209	2T1S	Ant 0	LPI	100.00	1.00	2.00	1.31	1.17	0.1	0.019	0.02	0.164	0.19										
	WLAN6G	802.11a	Right Side	5	209	2T1S	Ant 0	LPI	100.00	1.00	2.00	1.31	1.17	0	0	0.00	0											
	WLAN6G	802.11a	Top Side	5	209	2T1S	Ant 0	LPI	100.00	1.00	2.00	1.31	1.17	-0.12	0.00963	0.01	0.082	0.1										
	WLAN6G	802.11a	Bottom Side	5	209	2T1S	Ant 0	LPI	100.00	1.00	2.00	1.31	1.17	0.1	0.028	0.03	0.247	0.29										
	WLAN6G	802.11a	Front Face	5	209	2T1S	Ant 1	LPI	100.00	1.00	2.00	1.99	1.00	-0.08	0.00963	0.01	0.082	0.08										
	WLAN6G	802.11a	Rear Face	5	209	2T1S	Ant 1	LPI	100.00	1.00	2.00	1.99	1.00	0	0	0.00	0											
	WLAN6G	802.11a	Left Side	5	209	2T1S	Ant 1	LPI	100.00	1.00	2.00	1.99	1.00	-0.07	0.00963	0.01	0.082	0.08										
	WLAN6G	802.11a	Right Side	5	209	2T1S	Ant 1	LPI	100.00	1.00	2.00	1.99	1.00	0	0	0.00	0											
	WLAN6G	802.11a	Top Side	5	209	2T1S	Ant 1	LPI	100.00	1.00	2.00	1.99	1.00	-0.03	0.00963	0.01	0.082	0.08										
	WLAN6G	802.11a	Bottom Side	5	209	2T1S	Ant 1	LPI	100.00	1.00	2.00	1.99	1.00	0.05	0.019	0.02	0.164	0.16										
	WLAN6G	802.11a	Front Face	5	209	2T1S	Ant 0+1	LPI	100.00	1.00	5.00	4.67	1.08	0.05	0.00963	0.01	0.082	0.09										
	WLAN6G	802.11a	Rear Face	5	209	2T1S	Ant 0+1	LPI	100.00	1.00	5.00	4.67	1.08	0	0	0.00	0											
	WLAN6G	802.11a	Left Side	5	209	2T1S	Ant 0+1	LPI	100.00	1.00	5.00	4.67	1.08	0.12	0.028	0.03	0.247	0.27										
	WLAN6G	802.11a	Right Side	5	209	2T1S	Ant 0+1	LPI	100.00	1.00	5.00	4.67	1.08	0	0	0.00	0											
	WLAN6G	802.11a	Top Side	5	209	2T1S	Ant 0+1	LPI	100.00	1.00	5.00	4.67	1.08	-0.14	0.019	0.02	0.164	0.18										
	WLAN6G	802.11a	Bottom Side	5	209	2T1S	Ant 0+1	LPI	100.00	1.00	5.00	4.67	1.08	0.03	0.028	0.03	0.247	0.27										
	WLAN6G	802.11ax HE160	Front Face	5	207	2T2S	Ant 0	LPI	100.00	1.00	13.00	12.65	1.08	0.09	0.192	0.21	1.64	1.77										
	WLAN6G	802.11ax HE160	Rear Face	5	207	2T2S	Ant 0	LPI	100.00	1.00	13.00	12.65	1.08	0	0	0.00	0											
	WLAN6G	802.11ax HE160	Left Side	5	207	2T2S	Ant 0	LPI	100.00	1.00	13.00	12.65	1.08	-0.03	0.375	0.41	3.21	3.47										
	WLAN6G	802.11ax HE160	Right Side	5	207	2T2S	Ant 0	LPI	100.00	1.00	13.00	12.65	1.08	-0.11	0.019	0.02	0.164	0.18										
	WLAN6G	802.11ax HE160	Top Side	5	207	2T2S	Ant 0	LPI	100.00	1.00	13.00	12.65	1.08	-0.14	0.211	0.23	1.81	1.95										
	WLAN6G	802.11ax HE160	Bottom Side	5	207	2T2S	Ant 0	LPI	100.00	1.00	13.00	12.65	1.08	0.07	0.298	0.32	2.55	2.75										
	WLAN6G	802.11ax HE160	Front Face	5	207	2T2S	Ant 1	LPI	100.00	1.00	13.00	12.95	1.01	-0.15	0.269	0.27	2.3	2.32										
	WLAN6G	802.11ax HE160	Rear Face	5	207	2T2S	Ant 1	LPI	100.00	1.00	13.00	12.95	1.01	-0.18	0.057	0.06	0.494	0.5										
	WLAN6G	802.11ax HE160	Left Side	5	207	2T2S	Ant 1	LPI	100.00	1.00	13.00	12.95	1.01	-0.15	0.337	0.34	2.88	2.91										
	WLAN6G	802.11ax HE160	Right Side	5	207	2T2S	Ant 1	LPI	100.00	1.00	13.00	12.95	1.01	-0.02	0.00963	0.01	0.082	0.08										
	WLAN6G	802.11ax HE160	Top Side	5	207	2T2S	Ant 1	LPI	100.00	1.00	13.00	12.95	1.01	-0.12	0.308	0.31	2.63	2.66										
	WLAN6G	802.11ax HE160	Bottom Side	5	207	2T2S	Ant 1	LPI	100.00	1.00	13.00	12.95	1.01	-0.06	0.279	0.28	2.39	2.41										
	WLAN6G	802.11ax HE160	Front Face	5	207	2T2S	Ant 0+1	LPI	100.00	1.00	16.00	15.81	1.04	-0.14	0.317	0.33	2.78	2.89										
	WLAN6G	802.11ax HE160	Rear Face	5	207	2T2S	Ant 0+1	LPI	100.00	1.00	16.00	15.81	1.04	0.14	0.086	0.09	0.741	0.77										
	WLAN6G	802.11ax HE160	Left Side	5	207	2T2S	Ant 0+1	LPI	100.00	1.00	16.00	15.81	1.04	-0.04	0.327	0.34	2.8	2.91										
	WLAN6G	802.11ax HE160	Right Side	5	207	2T2S	Ant 0+1	LPI	100.00	1.00	16.00	15.81	1.04	0.16	0.028	0.03	0.247	0.26										
	WLAN6G	802.11ax HE160	Top Side	5	207	2T2S	Ant 0+1	LPI	100.00	1.00	16.00	15.81	1.04	-0.14	0.411	0.43	3.58	3.72										
	WLAN6G	802.11ax HE160	Bottom Side	5	207	2T2S	Ant 0+1	LPI	100.00	1.00	16.00	15.81	1.04	-0.01	0.346	0.36	2.96	3.08										
	WLAN6G	802.11ax HE160	Bottom Side	5	15	1T1S	Ant 0	LPI	100.00	1.00	16.50	15.22	1.34	0.01	0.337	0.45	2.88	3.86										
	WLAN6G	802.11ax HE160	Bottom Side	5	47	1T1S	Ant 0	LPI	100.00	1.00	16.50	15.03	1.40	0.14	0.423	0.59	3.62	5.07										
	WLAN6G	802.11ax HE160	Bottom Side	5	79	1T1S	Ant 0	LPI	100.00	1.00	16.50	15.28	1.32	0.11	0.414	0.55	3.54	4.67										
	WLAN6G	802.11ax HE160	Bottom Side	5	111	1T1S	Ant 0	LPI	100.00	1.00	16.50	15.78	1.18	-0.12	0.365	0.43	3.13	3.69										
	WLAN6G	802.11ax HE160	Bottom Side	5	143	1T1S	Ant 0	LPI	100.00	1.00	16.50	15.12	1.37	0.08	0.433	0.59	3.7	5.07										
	WLAN6G	802.11ax HE160	Bottom Side	5	175	1T1S	Ant 0	LPI	100.00	1.00	16.50	15.18	1.36	-0.18	0.394	0.54	3.38	4.6										



BUREAU VERITAS

SAR and Power Density Test Result

System & Position						DUT Configuration			SAR										Power Density											
Plot No.	Band	Mode	Test Position	Separation Distance (mm)	Channel	Sample	Ant Status	Power Status	Duty Cycle	Crest Factor	Max. Tune-up Power (dBm)	Measured Conducted Power (dBm)	Scaling Factor	Power Drift (dB)	SAR-1g (W/kg)	Scaled SAR-1g (W/kg)	Measured APD W/m ² (4cm ²)	Scaled APD W/m ² (4cm ²)	Grid Step [λ]	iPD [W/m ²]	Scaling Factor for Measurement Uncertainty	Averaging Area [cm ²]	Power Drift [dB]	Normal psPD [W/m ²]	Scaled Normal psPD [W/m ²]	Total psPD [W/m ²]	Scaled Total psPD [W/m ²]			
	WLAN6G	802.11ax HE160	Front Face	5	15	1T1S	Ant 0	SP	100.00	1.00	18.00	17.85	1.04	-0.17	0.238	0.25	2.03	2.11												
	WLAN6G	802.11ax HE160	Rear Face	5	15	1T1S	Ant 0	SP	100.00	1.00	18.00	17.85	1.04	-0.19	0.074	0.08	0.633	0.66												
	WLAN6G	802.11ax HE160	Left Side	5	15	1T1S	Ant 0	SP	100.00	1.00	18.00	17.85	1.04	0.17	0.398	0.41	3.4	3.54												
	WLAN6G	802.11ax HE160	Right Side	5	15	1T1S	Ant 0	SP	100.00	1.00	18.00	17.85	1.04	-0.16	0.053	0.06	0.453	0.47												
	WLAN6G	802.11ax HE160	Top Side	5	15	1T1S	Ant 0	SP	100.00	1.00	18.00	17.85	1.04	0.01	0.261	0.27	2.23	2.32												
	WLAN6G	802.11ax HE160	Bottom Side	5	15	1T1S	Ant 0	SP	100.00	1.00	18.00	17.85	1.04	0.07	0.618	0.64	5.29	5.5												
	WLAN6G	802.11ax HE160	Front Face	5	15	1T1S	Ant 1	SP	100.00	1.00	18.00	17.85	1.04	0.08	0.233	0.24	1.99	2.07												
	WLAN6G	802.11ax HE160	Rear Face	5	15	1T1S	Ant 1	SP	100.00	1.00	18.00	17.85	1.04	-0.14	0.068	0.07	0.582	0.61												
	WLAN6G	802.11ax HE160	Left Side	5	15	1T1S	Ant 1	SP	100.00	1.00	18.00	17.85	1.04	-0.07	0.392	0.41	3.35	3.48												
	WLAN6G	802.11ax HE160	Right Side	5	15	1T1S	Ant 1	SP	100.00	1.00	18.00	17.85	1.04	-0.03	0.048	0.05	0.41	0.43												
	WLAN6G	802.11ax HE160	Top Side	5	15	1T1S	Ant 1	SP	100.00	1.00	18.00	17.85	1.04	-0.09	0.255	0.27	2.18	2.27												
	WLAN6G	802.11ax HE160	Bottom Side	5	15	1T1S	Ant 1	SP	100.00	1.00	18.00	17.85	1.04	0.02	0.612	0.64	5.23	5.44												
	WLAN6G	802.11a	Front Face	5	93	2T1S	Ant 0	SP	100.00	1.00	18.00	17.78	1.05	-0.12	0.226	0.24	1.93	2.03												
	WLAN6G	802.11a	Rear Face	5	93	2T1S	Ant 0	SP	100.00	1.00	18.00	17.78	1.05	-0.02	0.061	0.06	0.522	0.55												
	WLAN6G	802.11a	Left Side	5	93	2T1S	Ant 0	SP	100.00	1.00	18.00	17.78	1.05	0.05	0.386	0.41	3.3	3.47												
	WLAN6G	802.11a	Right Side	5	93	2T1S	Ant 0	SP	100.00	1.00	18.00	17.78	1.05	-0.12	0.041	0.04	0.35	0.37												
	WLAN6G	802.11a	Top Side	5	93	2T1S	Ant 0	SP	100.00	1.00	18.00	17.78	1.05	-0.13	0.248	0.26	2.12	2.23												
	WLAN6G	802.11a	Bottom Side	5	93	2T1S	Ant 0	SP	100.00	1.00	18.00	17.78	1.05	0.02	0.605	0.64	5.17	5.43												
	WLAN6G	802.11a	Front Face	5	93	2T1S	Ant 1	SP	100.00	1.00	18.00	17.73	1.06	0.06	0.316	0.33	2.69	2.85												
	WLAN6G	802.11a	Rear Face	5	93	2T1S	Ant 1	SP	100.00	1.00	18.00	17.73	1.06	-0.11	0.117	0.12	1	1.06												
	WLAN6G	802.11a	Left Side	5	93	2T1S	Ant 1	SP	100.00	1.00	18.00	17.73	1.06	-0.07	0.39	0.41	3.33	3.53												
	WLAN6G	802.11a	Right Side	5	93	2T1S	Ant 1	SP	100.00	1.00	18.00	17.73	1.06	-0.07	0.068	0.07	0.582	0.62												
	WLAN6G	802.11a	Top Side	5	93	2T1S	Ant 1	SP	100.00	1.00	18.00	17.73	1.06	-0.14	0.364	0.39	3.11	3.3												
	WLAN6G	802.11a	Bottom Side	5	93	2T1S	Ant 1	SP	100.00	1.00	18.00	17.73	1.06	0.09	0.625	0.66	5.35	5.67												
	WLAN6G	802.11a	Front Face	5	93	2T1S	Ant 0+1	SP	100.00	1.00	21.00	20.87	1.03	-0.03	0.33	0.34	2.82	2.9												
	WLAN6G	802.11a	Rear Face	5	93	2T1S	Ant 0+1	SP	100.00	1.00	21.00	20.87	1.03	-0.18	0.123	0.13	1.05	1.08												
	WLAN6G	802.11a	Left Side	5	93	2T1S	Ant 0+1	SP	100.00	1.00	21.00	20.87	1.03	0.03	0.615	0.63	5.16	5.31												
	WLAN6G	802.11a	Right Side	5	93	2T1S	Ant 0+1	SP	100.00	1.00	21.00	20.87	1.03	0.09	0.069	0.07	0.59	0.61												
	WLAN6G	802.11a	Top Side	5	93	2T1S	Ant 0+1	SP	100.00	1.00	21.00	20.87	1.03	0.15	0.42	0.43	3.59	3.7												
	WLAN6G	802.11a	Bottom Side	5	93	2T1S	Ant 0+1	SP	100.00	1.00	21.00	20.87	1.03	-0.13	0.703	0.72	6.11	6.29												
	WLAN6G	802.11ax HE160	Front Face	5	15	2T2S	Ant 0	SP	100.00	1.00	18.00	17.89	1.03	-0.04	0.215	0.22	1.84	1.9												
	WLAN6G	802.11ax HE160	Rear Face	5	15	2T2S	Ant 0	SP	100.00	1.00	18.00	17.89	1.03	0.05	0.051	0.05	0.436	0.45												
	WLAN6G	802.11ax HE160	Left Side	5	15	2T2S	Ant 0	SP	100.00	1.00	18.00	17.89	1.03	0.15	0.375	0.39	3.21	3.31												
	WLAN6G	802.11ax HE160	Right Side	5	15	2T2S	Ant 0	SP	100.00	1.00	18.00	17.89	1.03	0.19	0.03	0.03	0.256	0.26												
	WLAN6G	802.11ax HE160	Top Side	5	15	2T2S	Ant 0	SP	100.00	1.00	18.00	17.89	1.03	-0.04	0.237	0.24	2.02	2.08												
	WLAN6G	802.11ax HE160	Bottom Side	5	15	2T2S	Ant 0	SP	100.00	1.00	18.00	17.89	1.03	0.11	0.595	0.61	5.09	5.24												
	WLAN6G	802.11ax HE160	Front Face	5	15	2T2S	Ant 1	SP	100.00	1.00	18.00	17.99	1.00	-0.03	0.315	0.32	2.69	2.69												
	WLAN6G	802.11ax HE160	Rear Face	5	15	2T2S	Ant 1	SP	100.00	1.00	18.00	17.99	1.00	-0.16	0.106	0.11	0.907	0.91												
	WLAN6G	802.11ax HE160	Left Side	5	15	2T2S	Ant 1	SP	100.00	1.00	18.00	17.99	1.00	-0.12	0.379	0.38	3.24	3.24												
	WLAN6G	802.11ax HE160	Right Side	5	15	2T2S	Ant 1	SP	100.00	1.00	18.00	17.99	1.00	-0.19	0.057	0.06	0.487	0.49												
	WLAN6G	802.11ax HE160	Top Side	5	15	2T2S	Ant 1	SP	100.00	1.00	18.00	17.99	1.00	0.13	0.353	0.35	3.02	3.02												
	WLAN6G	802.11ax HE160	Bottom Side	5	15	2T2S	Ant 1	SP	100.00	1.00	18.00	17.99	1.00	-0.17	0.614	0.61	5.25	5.25												
	WLAN6G	802.11ax HE160	Front Face	5	15	2T2S	Ant 0+1	SP	100.00	1.00	21.00	20.99	1.00	-0.19	0.34	0.34	2.91	2.91	0.125	1.67	1.545	4.00	0.12	1.56	2.41	1.58	2.44			
	WLAN6G	802.11ax HE160	Rear Face	5	15	2T2S	Ant 0+1	SP	100.00	1.00	21.00	20.99	1.00	-0.08	0.133	0.13	1.13	1.13	0.125	0.653	1.545	4.00	-0.04	0.611	0.94	0.618	0.95			
	WLAN6G	802.11ax HE160	Left Side	5	15	2T2S	Ant 0+1	SP	100.00	1.00	21.00	20.99	1.00	0.06	0.626	0.63	5.35	5.35	0.125	3.07	1.545	4.00	-0.11	2.87	4.43	2.91	4.5			
	WLAN6G	802.11ax HE160	Right Side	5	15	2T2S	Ant 0+1	SP	100.00	1.00	21.00	20.99	1.00	-0.05	0.079	0.08	0.676	0.68	0.125	0.388	1.545	4.00	0.06	0.363	0.56	0.367	0.57			
	WLAN6G	802.11ax HE160	Top Side	5	15	2T2S	Ant 0+1	SP	100.00	1.00	21.00	20.99	1.00	-0.15	0.443	0.44	3.79	3.79	0.125	2.17	1.545	4.00	0.17	2.03	3.14	2.05	3.17			
	WLAN6G	802.11ax HE160	Bottom Side	5	15	2T2S	Ant 0+1	SP	100.00	1.00	21.00	20.99	1.00	0.03	0.757	0.76	6.48	6.48	0.125	3.72	1.545	4.00	0.04	3.48	5.38	3.52	5.44			
	WLAN6G	802.11ax HE160	Bottom Side	5	47	2T2S	Ant 0+1	SP	100.00	1.00	21.00	20.84	1.04	-0.12	0.713	0.74	6.1	6.34	0.125	3.55	1.545	4.00	0.11	3.32	5.13	3.36	5.4			
	WLAN6G	802.11ax HE160	Bottom Side	5	79	2T2S	Ant 0+1	SP	100.00	1.00	21.00	20.94	1.01	0.19	0.717	0.72	6.13	6.19	0.125	3.57	1.545	4.00	0.07	3.34	5.16	3.38	5.27			
	WLAN6G	802.11ax HE160	Bottom Side	5	143	2T2S	Ant 0+1	SP	100.00	1.00	21.00	20.80	1.05	-0.02	0.718	0.75	6.16	6.47	0.125	3.67	1.545	4.00	-0.08	3.29	5.08	3.33	5.4			
	WLAN6G	802.11ax HE160	Bottom Side	5	175	2T2S	Ant 0+1	SP	100.00	1.00	21.00	20.88	1.03	0.08	0.716	0.74	6.12	6.3	0.125	3.56	1.545	4.00	0.05	3.33	5.14	3.37	5.36			

Appendix H. Analysis of Simultaneous Transmission.

The analysis of simultaneous transmission SAR are shown as below.

<Possibilities of Simultaneous Transmission>

The simultaneous transmission possibilities for this device are listed as below.

Simultaneous TX Combination	Capable Transmit Configurations	Exposure Condition
A	WLAN 5G + BT	Yes
B	WLAN 6G + BT	Yes
C	WLAN 2.4G + WLAN 5G	Yes
D	WLAN 2.4G + WLAN 6G	Yes

Notes

1. The WLAN 2.4G and BT cannot transmit simultaneously.

Simultaneous Transmission SAR Evaluation

Position	1	2	3	4	A (2+4)	B (3+4)	C (1+2)	D (1+3)
	Max WLAN 2.4GHz	Max WLAN 5GHz	Max WLAN 6GHz	Max BT	Summimg result 1g SAR W/kg	Summimg result 1g SAR W/kg	Summimg result 1g SAR W/kg	Summimg result 1g SAR W/kg
	1g SAR W/kg	1g SAR W/kg	1g SAR W/kg	1g SAR W/kg				
Front Face	0.26	0.37	0.34	0.08	0.45	0.42	0.63	0.60
Rear Face	0.18	0.16	0.13	0.06	0.22	0.19	0.34	0.31
Left Side	0.20	0.66	0.63	0.07	0.73	0.70	0.86	0.83
Right Side	0.45	0.10	0.08	0.20	0.30	0.28	0.55	0.53
Top Side	0.39	0.46	0.44	0.17	0.63	0.61	0.85	0.83
Bottom Side	0.62	0.79	0.76	0.24	1.03	1.00	1.41	1.38

Total Exposure Ratio (Body)					
Position	1	3	4	B (3+4)	D (1+3)
	Max WLAN 2.4GHz	Max WLAN 6GHz	Max BT	Total Exposure Ratio	Total Exposure Ratio
	1g SAR W/kg	4cm ² W/m ²	1g SAR W/kg		
Applicable Limit	1.6 W/kg	10 W/m ²	1.6 W/kg		
Front Face	0.26	2.44	0.03	0.26	0.41
Rear Face	0.18	0.95	0.06	0.13	0.21
Left Side	0.20	4.50	0.07	0.49	0.58
Right Side	0.45	0.57	0.20	0.18	0.34
Top Side	0.39	3.17	0.17	0.42	0.56
Bottom Side	0.62	5.44	0.24	0.69	0.93