

## Appendix B – System Check Plots

Test Date : 2024-06-13 | Ambient Temp : 23.0 °C | Tissue Temp : 22.8 °C

### System Performance Check

#### System Performance Check at 2450 MHz

#### Verification Source Properties

Manufacturer	Model No.	Serial No.	Input Power [dBm]
SPEAG	D2450	712	17.0

#### Exposure Conditions

Phantom Section	Group	Frequency [MHz]	Conversion Factor	TSL Conductivity [S/m]	TSL Permittivity
Flat	CW	2450.000	7.73	1.86	42.0

#### Hardware Setup

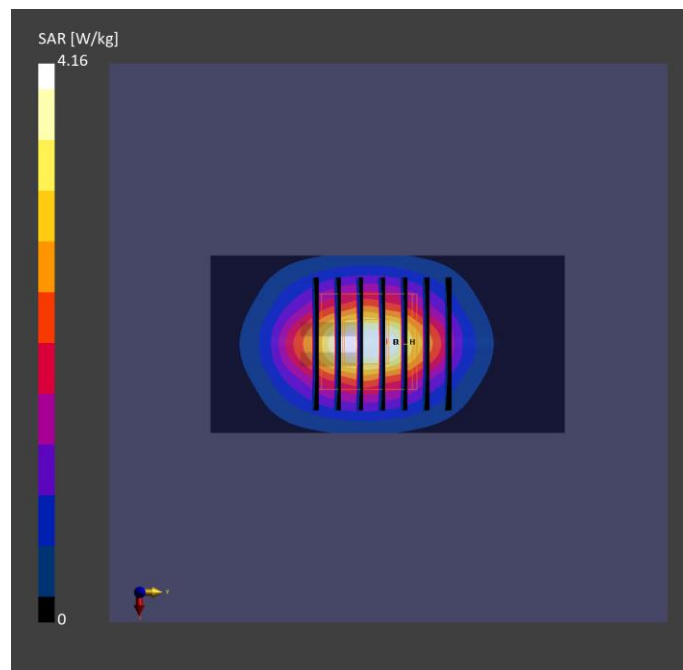
Phantom	Tissue Simulating Liquid	Probe / Calibration Date	DAE / Calibration Date
ELI V8.0 (20deg probe tilt) - 2176	HBBL-600-10000	EX3DV4 – SN3977 / 2024-03-21	DAE4 Sn1743 / 2023-08-17

#### Scan Setup

	Area Scan	Zoom Scan
Grid Extents [mm]	40.0 x 80.0	30.0 x 30.0 x 30.0
Grid Steps [mm]	10.0 x 10.0	5.0 x 5.0 x 1.5
Sensor Surface [mm]	3.0	1.4
Graded Grid	N/A	Yes
Grading Ratio	N/A	1.5

#### Measurement Results

	Area Scan	Zoom Scan
psSAR-1g [W/kg]	2.59	<b>2.58</b>
psSAR-10g [W/kg]	1.20	<b>1.21</b>
Power Drift [dB]		0.00
TSL Correction	Positive only	Positive only



Test Date : 2024-06-13 | Ambient Temp : 23.0 °C | Tissue Temp : 22.8 °C

**System Performance Check**

**System Performance Check at 6500 MHz**

**Verification Source Properties**

Manufacturer	Model No.	Serial No.	Input Power [dBm]
SPEAG	D6.5GHz	1016	20.0

**Exposure Conditions**

Phantom Section	Group	Frequency [MHz]	Conversion Factor	TSL Conductivity [S/m]	TSL Permittivity
Flat	CW	6500.000	5.43	5.97	34.2

**Hardware Setup**

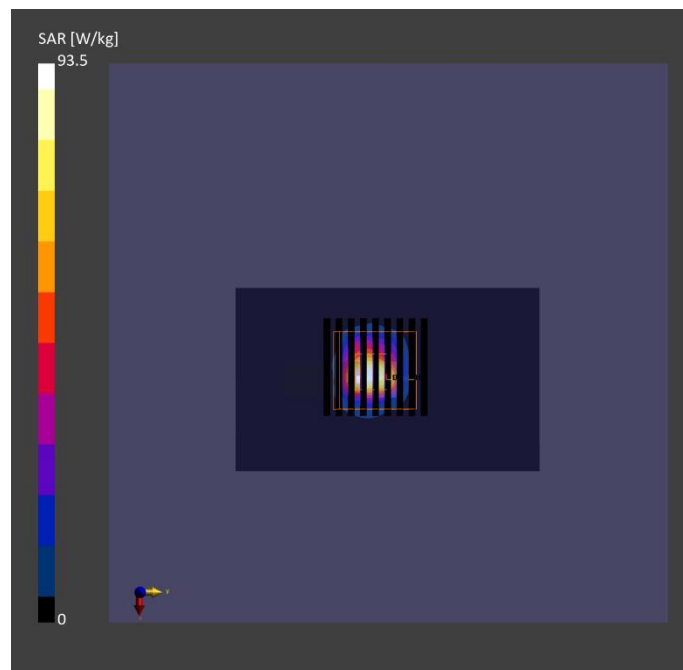
Phantom	Tissue Simulating Liquid	Probe   Calibration Date	DAE   Calibration Date
ELI V8.0 (20deg probe tilt) - 2176	HBBL-600-10000	EX3DV4 – SN3977   2024-03-21	DAE4 Sn1743   2023-08-17

**Scan Setup**

	Area Scan	Zoom Scan
Grid Extents [mm]	51.0 x 85.0	22.0 x 22.0 x 22.0
Grid Steps [mm]	8.5 x 8.5	3.4 x 3.4 x 1.4
Sensor Surface [mm]	3.0	1.4
Graded Grid	N/A	Yes
Grading Ratio	N/A	1.4

**Measurement Results**

	Area Scan	Zoom Scan
psSAR-1g [W/kg]	19.9	26.8
psSAR-8g [W/kg]	5.39	6.02
psSAR-10g [W/kg]	4.47	4.95
psAPD (1.0 cm <sup>2</sup> , sq) [W/m <sup>2</sup> ]		268
psAPD (4.0 cm <sup>2</sup> , sq) [W/m <sup>2</sup> ]		120
Power Drift [dB]		0.02
TSL Correction	Positive only	Positive only



Test Date : 2024-06-14 | Ambient Temp : 22.5 °C

**System Performance Check**

**System Performance Check at 10 GHz**

**Verification Source Properties**

Manufacturer	Model No.	Serial No.
SPEAG	5G Verification Source 10GHz	1060

**Exposure Conditions**

Phantom Section	Group	Frequency [MHz]	Conversion Factor
5G	CW	10000.0	1.0

**Hardware Setup**

Phantom	Medium	Probe   Calibration Date	DAE   Calibration Date
mmWave - 1102	Air	EUmmWV3 - SN9403_F1-55GHz / 2023-12-05	DAE4 Sn1741 / 2023-08-23

**Scan Setup**

	5G Scan
Grid Extents [mm]	60.0 x 60.0
Grid Steps [mm]	0.125 x 0.125
Sensor Surface [mm]	2.0

**Measurement Results**

	5G Scan
Avg. Area [cm <sup>2</sup> ]	4.00
psPD n+ [W/m <sup>2</sup> ]	<b>55.2</b>
psPD tot+ [W/m <sup>2</sup> ]	<b>54.8</b>
psPD mod+ [W/m <sup>2</sup> ]	55.3
E max [V/m]	161
Power Drift [dB]	0.01

