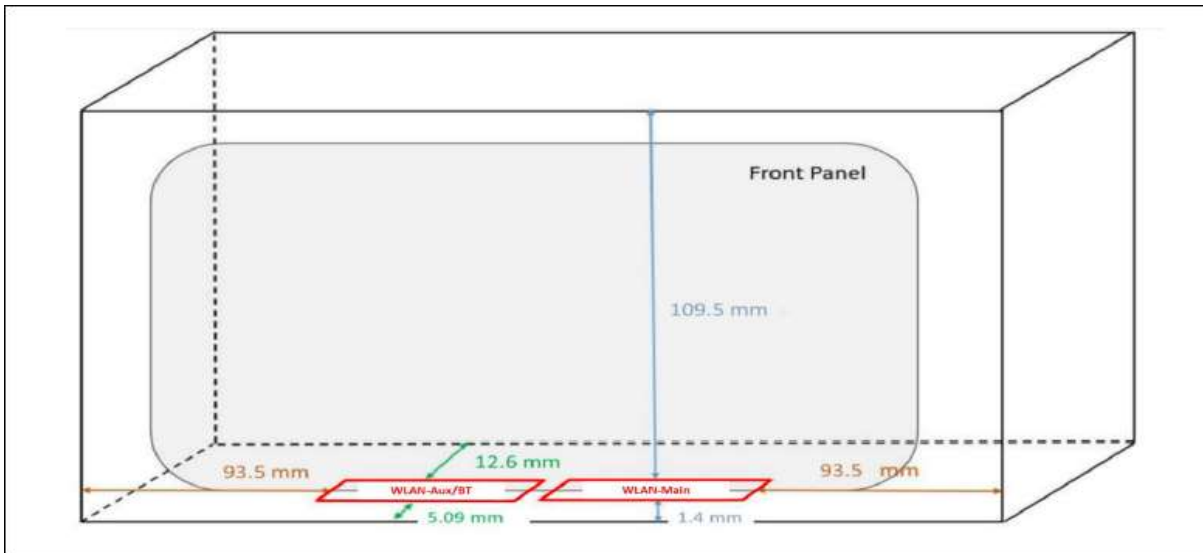
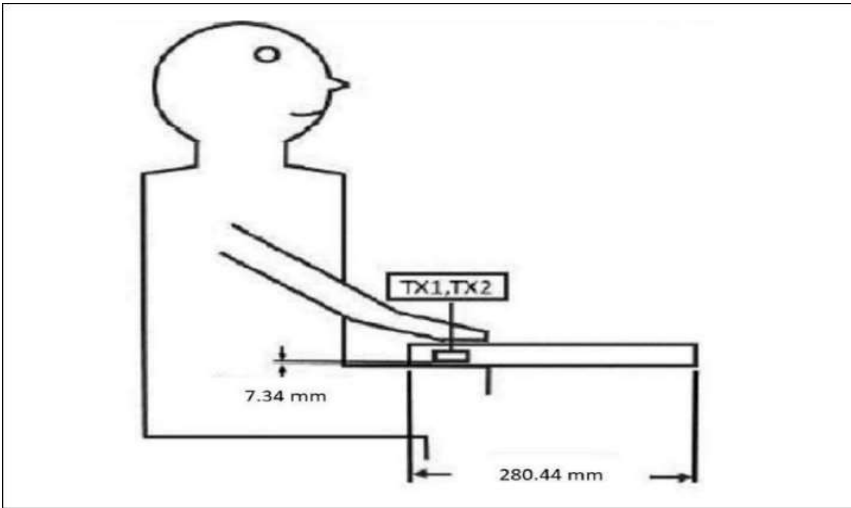


Photographs of EUT Setup and Antenna Location

The photographs of EUT and setup for SAR testing are shown as follows.



Antenna	To Bottom Side	To Top Side	To Left Side	To Right Side
	(mm)	(mm)	(mm)	(mm)
WLAN Main Ant 0	1.40	109.50	181.70	93.50
WLAN/BT Aux Ant 1	1.40	109.50	93.50	181.70



Antenna	Rear Face (mm)
WLAN Main Ant 0	7.34
WLAN/BT Aux Ant 1	7.34

<Photographs of Body SAR Test Setup>



Rear Face of EUT Tested at 0 mm

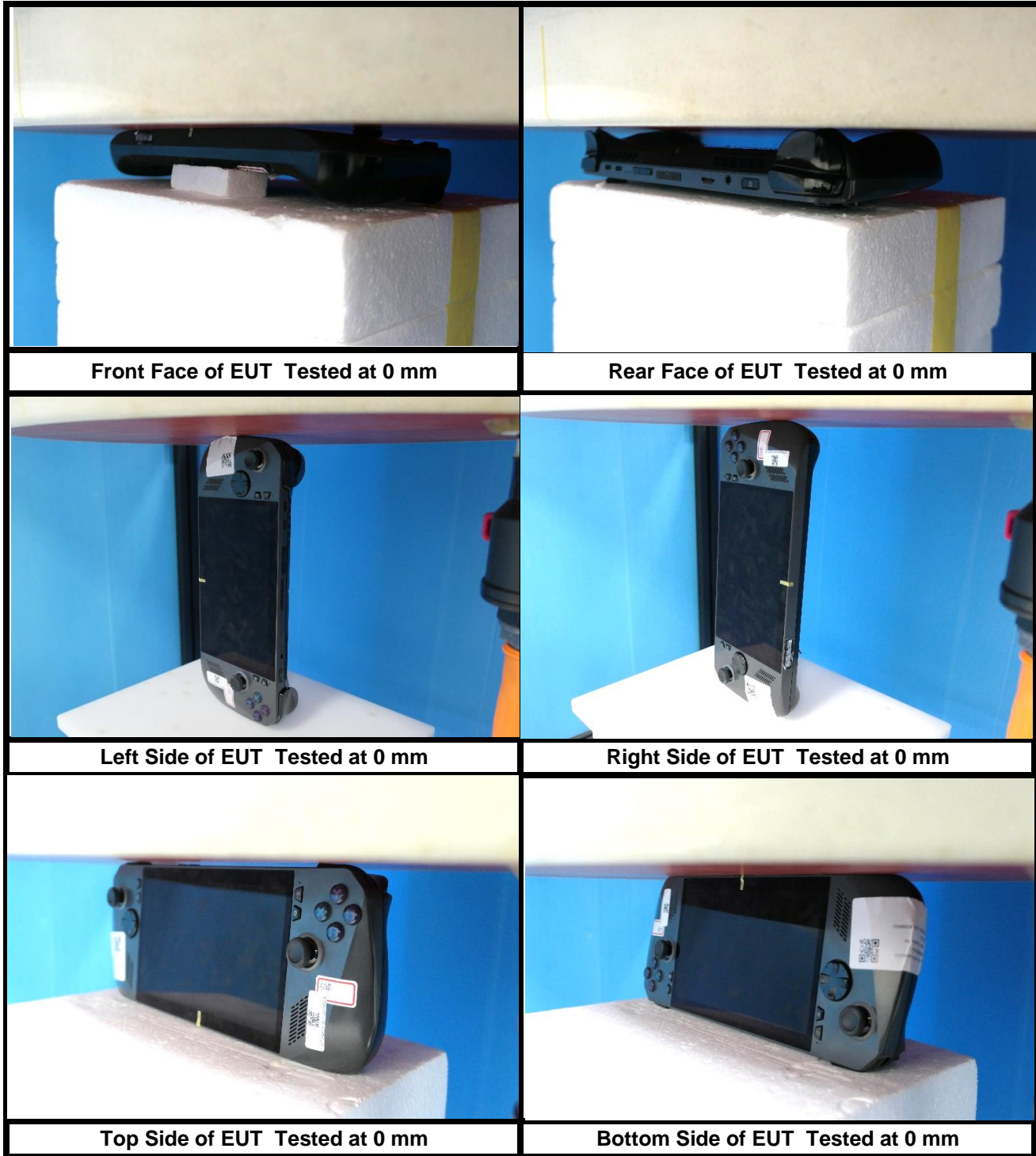


Rear Curve of EUT Tested at 0 mm



Bottom Side of EUT Tested at 0 mm

<Photographs of Extremity SAR Test Setup>



<Photographs of Power Density Test Setup>

