

Appendix C - Highest Measurement Plots

Test Date : 2023-12-08 | Ambient Temp : 22.9 °C | Tissue Temp : 22.7 °C

Test Mode

1_WLAN 2.4G_802.11n HT40_Bottom of laptop_0mm_Ch9_Ant 1+2

Device Under Test Properties

Manufacturer or Brand	Model No. or Code Name	Sample No. or IMEI	DUT Type
MediaTek	MT7922A12L	A001	Laptop

Exposure Conditions

Phantom Section	Band	Group, UID	Frequency [MHz], Channel Number	Conversion Factor	TSL Conductivity [S/m]	TSL Permittivity
Flat	WLAN 2.4GHz	WLAN, 10599 - AAC	2452.000, 9	8.2	1.84	40.2

Hardware Setup

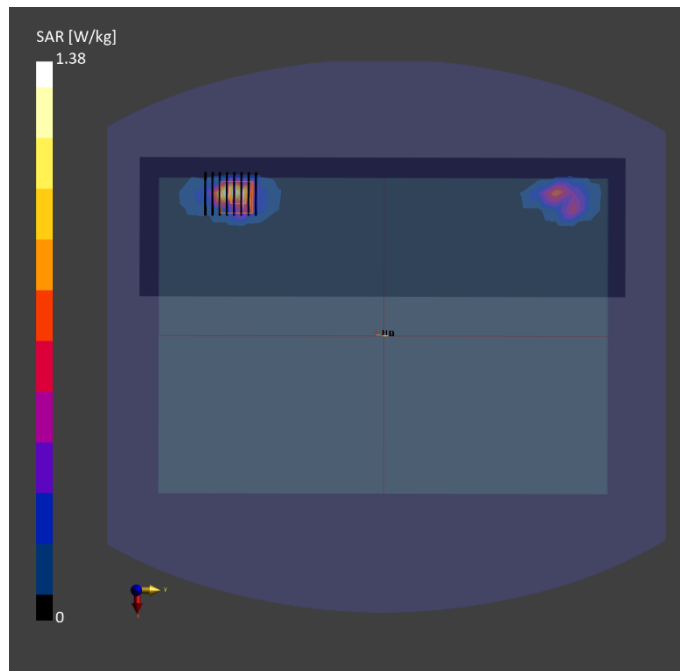
Phantom	Tissue Simulating Liquid	Probe Calibration Date	DAE Calibration Date
ELI V8.0 (20deg probe tilt) - 2180	HBBL-600-10000	EX3DV4 - SN7650 / 2023-05-22	DAE4 Sn1741 / 2023-08-23

Scan Setup

	Area Scan	Zoom Scan
Grid Extents [mm]	96.0 x 336.0	30.0 x 30.0 x 30.0
Grid Steps [mm]	12.0 x 12.0	5.0 x 5.0 x 5.0
Sensor Surface [mm]	3.0	1.4
Graded Grid	N/A	Yes
Grading Ratio	N/A	1.4

Measurement Results

	Area Scan	Zoom Scan
psSAR-1g [W/kg]	1.01	1.09
psSAR-10g [W/kg]	0.425	0.392
Power Drift [dB]		0.11
TSL Correction	Positive only	Positive only
M2 / M1 [%]		28.0
Dist 3dB Peak [mm]		5.0



Test Date : 2023-12-11 | Ambient Temp : 22.8 °C | Tissue Temp : 22.5 °C

Test Mode

2_WLAN 5.3G_802.11ac VHT80_Bottom of laptop_0mm_Ch58_Ant 2

Device Under Test Properties

Manufacturer or Brand	Model No. or Code Name	Sample No. or IMEI	DUT Type
MediaTek	MT7922A12L	A001	Laptop

Exposure Conditions

Phantom Section	Band	Group, UID	Frequency [MHz], Channel Number	Conversion Factor	TSL Conductivity [S/m]	TSL Permittivity
Flat	WLAN 5GHz	WLAN, 10544 - AAC	5290.000, 58	5.91	4.53	35.4

Hardware Setup

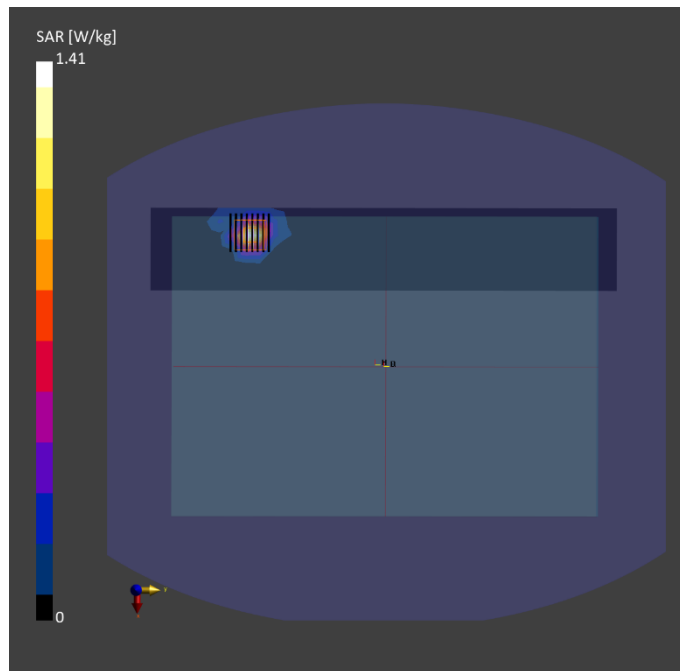
Phantom	Tissue Simulating Liquid	Probe Calibration Date	DAE Calibration Date
ELI V8.0 (20deg probe tilt) - 2180	HBBL-600-10000	EX3DV4 - SN7650 / 2023-05-22	DAE4 Sn1741 / 2023-08-23

Scan Setup

	Area Scan	Zoom Scan
Grid Extents [mm]	60.0 x 340.0	24.0 x 24.0 x 22.0
Grid Steps [mm]	10.0 x 10.0	4.0 x 4.0 x 1.4
Sensor Surface [mm]	3.0	1.4
Graded Grid	N/A	Yes
Grading Ratio	N/A	1.4

Measurement Results

	Area Scan	Zoom Scan
psSAR-1g [W/kg]	0.985	1.07
psSAR-10g [W/kg]	0.323	0.377
Power Drift [dB]		0.05
TSL Correction	Positive only	Positive only
M2 / M1 [%]		65.5
Dist 3dB Peak [mm]		7.6



Test Date : 2023-12-11 | Ambient Temp : 22.8 °C | Tissue Temp : 22.5 °C

Test Mode

3_WLAN 5.6G_802.11ac VHT80_Bottom of laptop_0mm_Ch106_Ant 1

Device Under Test Properties

Manufacturer or Brand	Model No. or Code Name	Sample No. or IMEI	DUT Type
MediaTek	MT7922A12L	A001	Laptop

Exposure Conditions

Phantom Section	Band	Group, UID	Frequency [MHz], Channel Number	Conversion Factor	TSL Conductivity [S/m]	TSL Permittivity
Flat	WLAN 5GHz	WLAN, 10544 - AAC	5530.000, 106	5.25	4.79	35.0

Hardware Setup

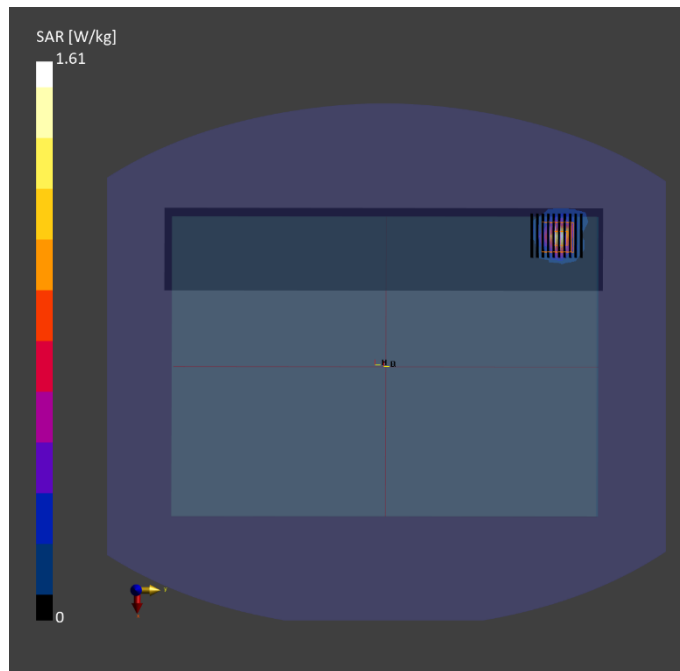
Phantom	Tissue Simulating Liquid	Probe Calibration Date	DAE Calibration Date
ELI V8.0 (20deg probe tilt) - 2180	HBBL-600-10000	EX3DV4 - SN7650 / 2023-05-22	DAE4 Sn1741 / 2023-08-23

Scan Setup

	Area Scan	Zoom Scan
Grid Extents [mm]	60.0 x 320.0	24.0 x 24.0 x 22.0
Grid Steps [mm]	10.0 x 10.0	4.0 x 4.0 x 1.4
Sensor Surface [mm]	3.0	1.4
Graded Grid	N/A	Yes
Grading Ratio	N/A	1.4

Measurement Results

	Area Scan	Zoom Scan
psSAR-1g [W/kg]	1.02	1.06
psSAR-10g [W/kg]	0.305	0.324
Power Drift [dB]		-0.12
TSL Correction	Positive only	Positive only
M2 / M1 [%]		63.9
Dist 3dB Peak [mm]		6.5



Test Date : 2023-12-11 | Ambient Temp : 22.8 °C | Tissue Temp : 22.5 °C

Test Mode

4_WLAN 5.8G_802.11ac VHT80_Bottom of laptop_0mm_Ch155_Ant 2

Device Under Test Properties

Manufacturer or Brand	Model No. or Code Name	Sample No. or IMEI	DUT Type
MediaTek	MT7922A12L	A001	Laptop

Exposure Conditions

Phantom Section	Band	Group, UID	Frequency [MHz], Channel Number	Conversion Factor	TSL Conductivity [S/m]	TSL Permittivity
Flat	WLAN 5GHz	WLAN, 10544 - AAC	5775.000, 155	5.28	5.07	34.6

Hardware Setup

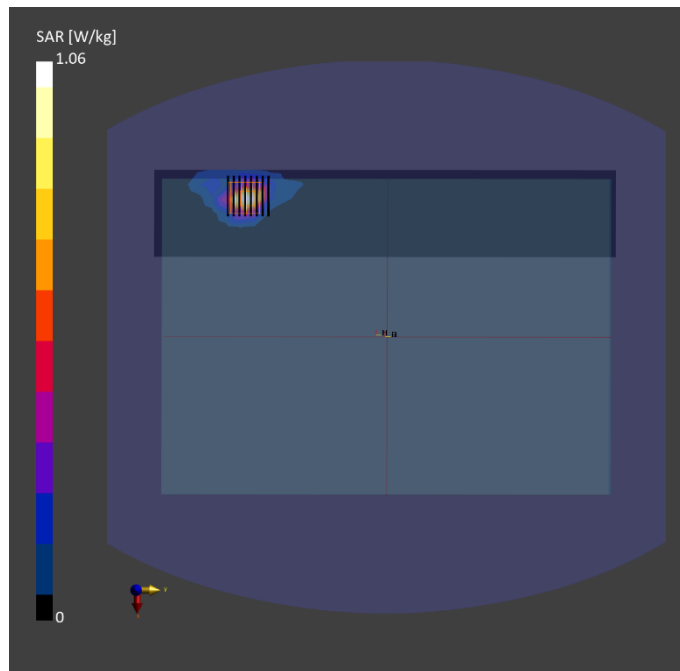
Phantom	Tissue Simulating Liquid	Probe Calibration Date	DAE Calibration Date
ELI V8.0 (20deg probe tilt) - 2180	HBBL-600-10000	EX3DV4 - SN7650 / 2023-05-22	DAE4 Sn1741 / 2023-08-23

Scan Setup

	Area Scan	Zoom Scan
Grid Extents [mm]	60.0 x 320.0	24.0 x 24.0 x 22.0
Grid Steps [mm]	10.0 x 10.0	4.0 x 4.0 x 1.4
Sensor Surface [mm]	3.0	1.4
Graded Grid	N/A	Yes
Grading Ratio	N/A	1.4

Measurement Results

	Area Scan	Zoom Scan
psSAR-1g [W/kg]	0.797	0.917
psSAR-10g [W/kg]	0.253	0.268
Power Drift [dB]		-0.02
TSL Correction	Positive only	Positive only
M2 / M1 [%]		60.2
Dist 3dB Peak [mm]		6.4



Test Date : 2023-12-11 | Ambient Temp : 22.8 °C | Tissue Temp : 22.5 °C

Test Mode

5_WLAN 5.9G_802.11ac VHT160_Bottom of laptop_0mm_Ch163_Ant 1

Device Under Test Properties

Manufacturer or Brand	Model No. or Code Name	Sample No. or IMEI	DUT Type
MediaTek	MT7922A12L	A001	Laptop

Exposure Conditions

Phantom Section	Band	Group, UID	Frequency [MHz], Channel Number	Conversion Factor	TSL Conductivity [S/m]	TSL Permittivity
Flat	WLAN 5GHz	WLAN, 10554 - AAD	5815.000, 163	5.28	5.09	34.5

Hardware Setup

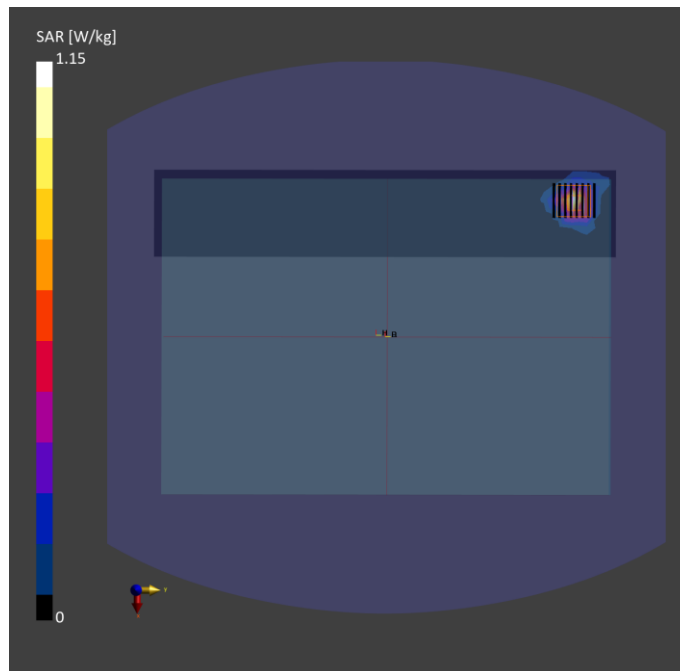
Phantom	Tissue Simulating Liquid	Probe Calibration Date	DAE Calibration Date
ELI V8.0 (20deg probe tilt) - 2180	HBBL-600-10000	EX3DV4 - SN7650 / 2023-05-22	DAE4 Sn1741 / 2023-08-23

Scan Setup

	Area Scan	Zoom Scan
Grid Extents [mm]	60.0 x 320.0	24.0 x 24.0 x 22.0
Grid Steps [mm]	10.0 x 10.0	4.0 x 4.0 x 1.4
Sensor Surface [mm]	3.0	1.4
Graded Grid	N/A	Yes
Grading Ratio	N/A	1.4

Measurement Results

	Area Scan	Zoom Scan
psSAR-1g [W/kg]	0.745	0.870
psSAR-10g [W/kg]	0.228	0.256
Power Drift [dB]		-0.07
TSL Correction	Positive only	Positive only
M2 / M1 [%]		58.6
Dist 3dB Peak [mm]		5.6



Test Date : 2023-12-08 | Ambient Temp : 22.9 °C | Tissue Temp : 22.7 °C

Test Mode

6_BT_BDR_Bottom of laptop_0mm_Ch0_Ant 2

Device Under Test Properties

Manufacturer or Brand	Model No. or Code Name	Sample No. or IMEI	DUT Type
MediaTek	MT7922A12L	A001	Laptop

Exposure Conditions

Phantom Section	Band	Group, UID	Frequency [MHz], Channel Number	Conversion Factor	TSL Conductivity [S/m]	TSL Permittivity
Flat	ISM 2.4 GHz Band	Bluetooth, 10032 - CAA	2402.000, 0	8.2	1.80	40.3

Hardware Setup

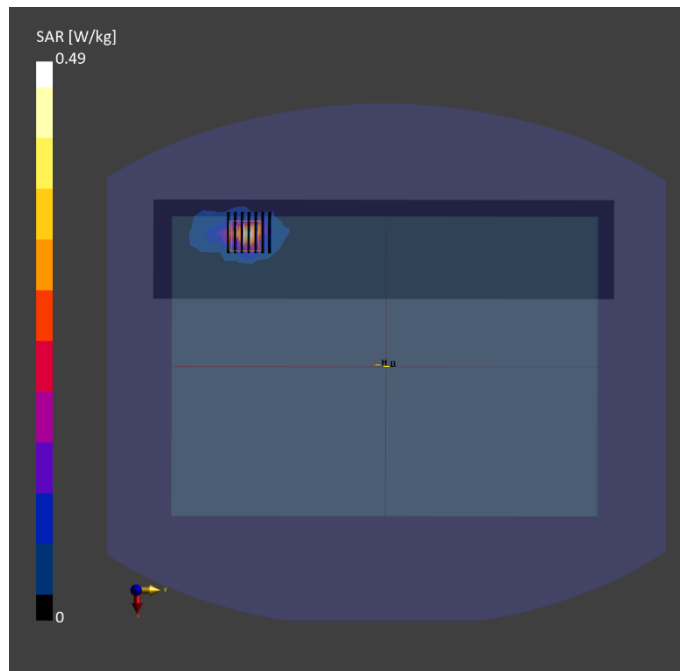
Phantom	Tissue Simulating Liquid	Probe Calibration Date	DAE Calibration Date
ELI V8.0 (20deg probe tilt) - 2180	HBBL-600-10000	EX3DV4 - SN7650 / 2023-05-22	DAE4 Sn1741 / 2023-08-23

Scan Setup

	Area Scan	Zoom Scan
Grid Extents [mm]	72.0 x 336.0	30.0 x 30.0 x 30.0
Grid Steps [mm]	12.0 x 12.0	5.0 x 5.0 x 5.0
Sensor Surface [mm]	3.0	1.4
Graded Grid	N/A	Yes
Grading Ratio	N/A	1.4

Measurement Results

	Area Scan	Zoom Scan
psSAR-1g [W/kg]	0.340	0.325
psSAR-10g [W/kg]	0.138	0.119
Power Drift [dB]		0.10
TSL Correction	Positive only	Positive only
M2 / M1 [%]		28.5
Dist 3dB Peak [mm]		5.4



Test Date : 2023-12-12 | Ambient Temp : 22.8 °C | Tissue Temp : 22.6 °C

Test Mode

7_WLAN 6G_802.11a_Bottom of laptop_0mm_Ch105_Ant 1

Device Under Test Properties

Manufacturer or Brand	Model No. or Code Name	Sample No. or IMEI	DUT Type
MediaTek	MT7922A12L	A001	Laptop

Exposure Conditions

Phantom Section	Band	Group, UID	Frequency [MHz], Channel Number	Conversion Factor	TSL Conductivity [S/m]	TSL Permittivity
Flat	U-NII-6	WLAN, 10683 - AAC	6475.000, 105	5.4	5.87	33.4

Hardware Setup

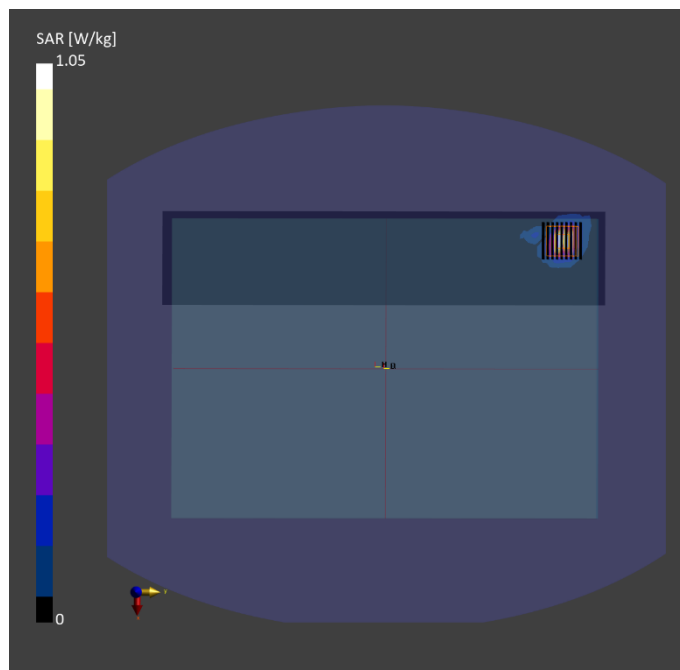
Phantom	Tissue Simulating Liquid	Probe Calibration Date	DAE Calibration Date
ELI V8.0 (20deg probe tilt) - 2180	HBBL-600-10000	EX3DV4 - SN7650 / 2023-05-22	DAE4 Sn1741 / 2023-08-23

Scan Setup

	Area Scan	Zoom Scan
Grid Extents [mm]	68.0 x 323.0	23.8 x 23.8 x 22.0
Grid Steps [mm]	8.5 x 8.5	3.4 x 3.4 x 1.4
Sensor Surface [mm]	3.0	1.4
Graded Grid	N/A	Yes
Grading Ratio	N/A	1.4

Measurement Results

	Area Scan	Zoom Scan
psSAR-1g [W/kg]	0.838	1.02
psSAR-10g [W/kg]	0.236	0.246
psAPD (1.0 cm ² , sq) [W/m ²]		10.6
psAPD (4.0 cm ² , sq) [W/m ²]		5.84
Power Drift [dB]		-0.03
TSL Correction	Positive only	Positive only
M2 / M1 [%]		50.2
Dist 3dB Peak [mm]		5.4



Test Date : 2023-12-14 | Ambient Temp : 22.6 °C

Test Mode

8_WLAN 6 GHZ_802.11a_Bottom of laptop_2mm_Ch105_Ant 1

Device Under Test Properties

Manufacturer or Brand	Model No. or Code Name	Sample No. or IMEI	DUT Type
MediaTek	MT7922A12L	A001	Laptop

Exposure Conditions

Phantom Section	Band	Group, UID	Frequency [MHz], Channel Number	Conversion Factor
5G	U-NII-6	WLAN, 10671 - AAC	6475.0, 105	1.0

Hardware Setup

Phantom	Medium	Probe Calibration Date	DAE Calibration Date
mmWave - 1102	Air	EUmmWV4 - SN9639_F1-55GHz / 2023-08-18	DAE4 Sn1669 / 2023-05-23

Scan Setup

	5G Scan
Grid Extents [mm]	93.0 x 93.0
Grid Steps [mm]	0.054 x 0.054
Sensor Surface [mm]	2.0

Measurement Results

	5G Scan
Avg. Area [cm ²]	4.00
psPD n+ [W/m ²]	4.55
psPD tot+ [W/m ²]	4.72
psPD mod+ [W/m ²]	6.62
E max [V/m]	63.0
Power Drift [dB]	0.06

