

Appendix B - System Performance Check Plots

System Performance Check at 2450 MHz Summary

Dipole	Frequency [MHz]
D2450V2 – SN712 HSL	2450.0

Exposure Conditions

Phantom Section, TSL	Test Distance [mm]	Band	Group, UID	Frequency [MHz], Channel Number	Conversion Factor	TSL Conductivity [S/m]	TSL Permittivity
Flat, HSL	10		CW, 0--	2450.000, 0	7.05	1.80	38.7

Hardware Setup

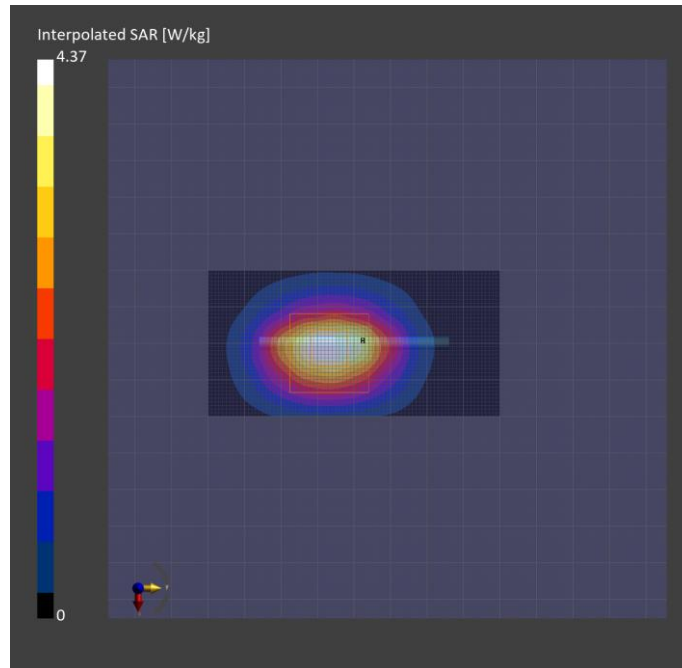
Phantom	TSL, Measured Date	Probe, Calibration Date	DAE, Calibration Date
ELI V8.0 (20deg probe tilt) - 2176	HBBL-600-10000 , 2023-Aug-25	EX3DV4 - SN7737, 2023-06-05	DAE4 Sn1669, 2023-05-23

Scan Setup

	Area Scan	Zoom Scan
Grid Extents [mm]	40.0 x 80.0	30.0 x 30.0 x 30.0
Grid Steps [mm]	10.0 x 10.0	5.0 x 5.0 x 1.5
Sensor Surface [mm]	3.0	1.4

Measurement Results

	Area Scan	Zoom Scan
Date	2023-08-25	2023-08-25
psSAR1g [W/Kg]	2.91	2.82
psSAR10g [W/Kg]	1.32	1.29
Power Drift [dB]	-0.19	0.03
TSL Correction	Positive only	Positive only
M2/M1 [%]		81.0
Dist 3dB Peak [mm]		9.0



System Performance Check at 5250 MHz Summary

Dipole	Frequency [MHz]
D5GHzV2 - SN1021 HSL	5250.0

Exposure Conditions

Phantom Section, TSL	Test Distance [mm]	Band	Group, UID	Frequency [MHz], Channel Number	Conversion Factor	TSL Conductivity [S/m]	TSL Permittivity
Flat, HSL	10		CW, 0--	5250.000, 0	5.58	4.54	34.7

Hardware Setup

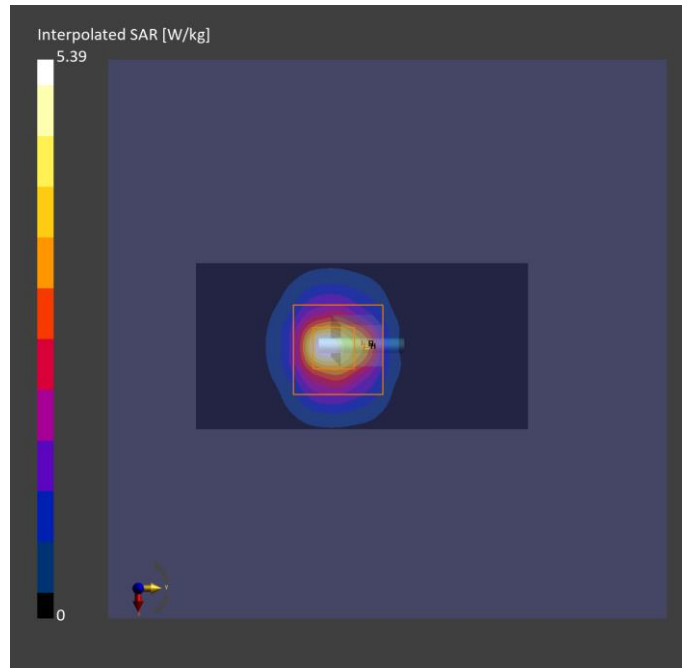
Phantom	TSL, Measured Date	Probe, Calibration Date	DAE, Calibration Date
ELI V8.0 (20deg probe tilt) - 2176	HBBL-600-10000 , 2023-Aug-28	EX3DV4 - SN7737, 2023-06-05	DAE4 Sn1669, 2023-05-23

Scan Setup

	Area Scan	Zoom Scan
Grid Extents [mm]	40.0 x 80.0	22.0 x 22.0 x 22.0
Grid Steps [mm]	10.0 x 10.0	4.0 x 4.0 x 1.4
Sensor Surface [mm]	3.0	1.4

Measurement Results

	Area Scan	Zoom Scan
Date	2023-08-28	2023-08-28
psSAR1g [W/Kg]	3.53	3.94
psSAR10g [W/Kg]	1.05	1.12
Power Drift [dB]	0.03	0.12
TSL Correction	Positive only	Positive only
M2/M1 [%]		64.6
Dist 3dB Peak [mm]		7.4



System Performance Check at 5600 MHz Summary

Dipole	Frequency [MHz]
D5GHzV2 - SN1021 HSL	5600.0

Exposure Conditions

Phantom Section, TSL	Test Distance [mm]	Band	Group, UID	Frequency [MHz], Channel Number	Conversion Factor	TSL Conductivity [S/m]	TSL Permittivity
Flat, HSL	10		CW, 0--	5600.000, 0	4.83	4.92	34.1

Hardware Setup

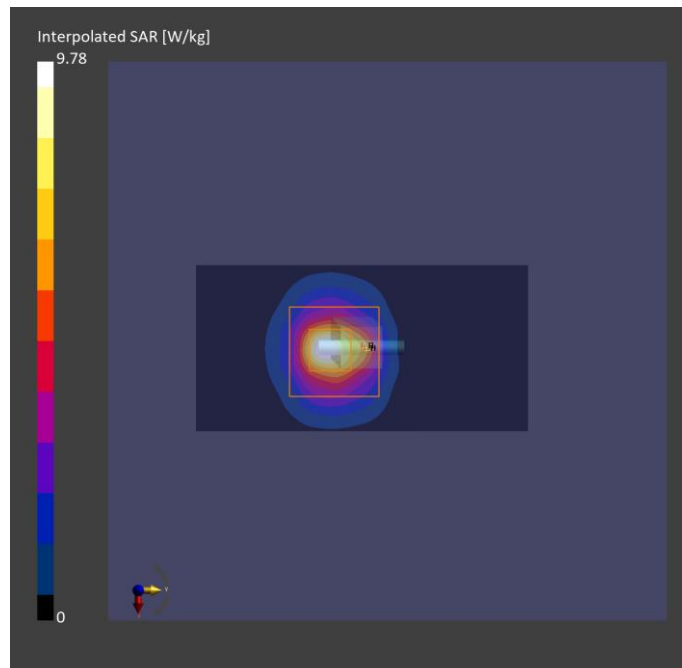
Phantom	TSL, Measured Date	Probe, Calibration Date	DAE, Calibration Date
ELI V8.0 (20deg probe tilt) - 2176	HBBL-600-10000 , 2023-Aug-28	EX3DV4 - SN7737, 2023-06-05	DAE4 Sn1669, 2023-05-23

Scan Setup

	Area Scan	Zoom Scan
Grid Extents [mm]	40.0 x 80.0	22.0 x 22.0 x 22.0
Grid Steps [mm]	10.0 x 10.0	4.0 x 4.0 x 1.4
Sensor Surface [mm]	3.0	1.4

Measurement Results

	Area Scan	Zoom Scan
Date	2023-08-28	2023-08-28
psSAR1g [W/Kg]	3.43	3.88
psSAR10g [W/Kg]	1.19	1.21
Power Drift [dB]	0.04	0.16
TSL Correction	Positive only	Positive only
M2/M1 [%]		62.7
Dist 3dB Peak [mm]		7.2



System Performance Check at 5750 MHz Summary

Dipole	Frequency [MHz]
D5GHzV2 - SN1021 HSL	5750.0

Exposure Conditions

Phantom Section, TSL	Test Distance [mm]	Band	Group, UID	Frequency [MHz], Channel Number	Conversion Factor	TSL Conductivity [S/m]	TSL Permittivity
Flat, HSL	10		CW, 0--	5750.000, 0	4.9	5.09	33.8

Hardware Setup

Phantom	TSL, Measured Date	Probe, Calibration Date	DAE, Calibration Date
ELI V8.0 (20deg probe tilt) - 2176	HBBL-600-10000 , 2023-Aug-28	EX3DV4 - SN7737, 2023-06-05	DAE4 Sn1669, 2023-05-23

Scan Setup

	Area Scan	Zoom Scan
Grid Extents [mm]	40.0 x 80.0	22.0 x 22.0 x 22.0
Grid Steps [mm]	10.0 x 10.0	4.0 x 4.0 x 1.4
Sensor Surface [mm]	3.0	1.4

Measurement Results

	Area Scan	Zoom Scan
Date	2023-08-28	2023-08-28
psSAR1g [W/Kg]	3.84	4.33
psSAR10g [W/Kg]	1.18	1.24
Power Drift [dB]	0.05	0.15
TSL Correction	Positive only	Positive only
M2/M1 [%]		59.8
Dist 3dB Peak [mm]		7.2

