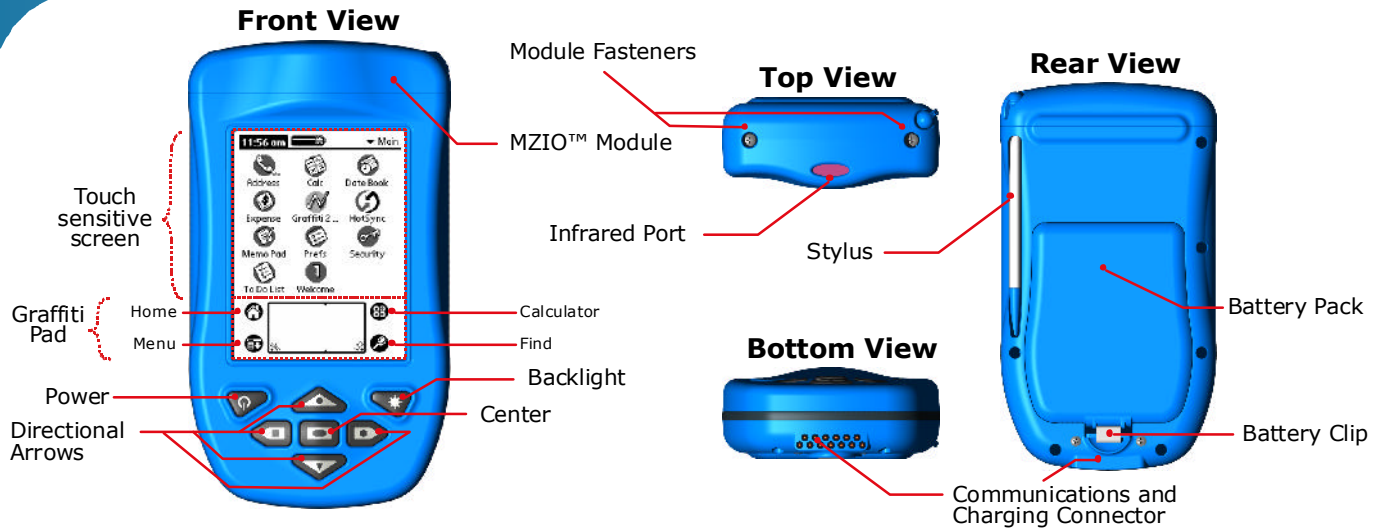


Quick Start Guide



1. Setup



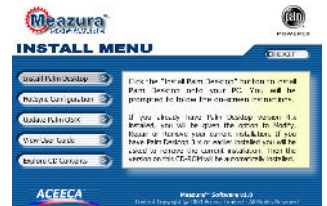
Meazura™ Setup

When powering up your Meazura™ for the first time, press the Power button and follow the on-screen instructions to setup the device. This includes calibration of the touch sensitive screen and setting your location, date and time. During this procedure, you can at your option take a Graffiti writing tutorial for entering text and special characters on your Meazura™.

PC Setup

To communicate between the Meazura™ and your PC, you must install 'Palm Desktop' located on your CD-ROM included with your kit.

1. Exit all programs, including those that may be running in the taskbar.
2. Insert the Meazura™ Software CD into your CD-ROM drive.
3. The install menu should appear automatically. If it doesn't then navigate to '**install_menu.exe**' located on your CD-ROM using Windows Explorer.
4. Follow the on-screen instruction for installing 'Palm Desktop'.



2. Connect

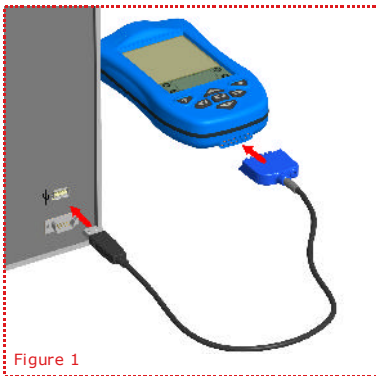
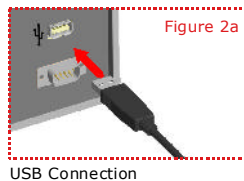
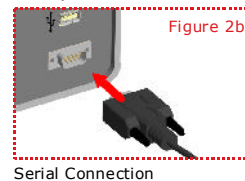


Figure 1

- Plug the Communications cable into a USB or Serial port on your computer (as pictured in figure 2a/b below).
- Connect the communications cable to the communication connector located at the bottom of the Meazura™ (as pictured in figure 1 left).
- Ensure the Meazura™ Desktop Software CD-ROM is inserted into your computer's CD-ROM drive.
- Press the power button to turn on your Meazura™ and perform a HotSync operation following the instructions in step 4 to commence the driver install for your Meazura™.
- Follow all instructions on your PC and your Meazura™.



USB Connection



Serial Connection

3. Charging

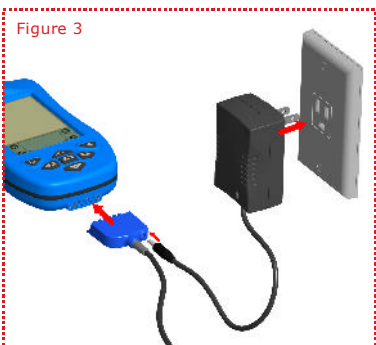


Figure 3

- Connect your AC adaptor to the bottom of your communications cable (as pictured below in figure 4).
- Connect the communications cable to the comms connector located at the bottom of your Meazura™ (as pictured below in figure 4).
- Ensure your connection setup is the same as pictured in figure 3 left to commence charging.

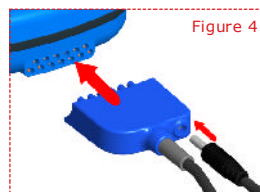
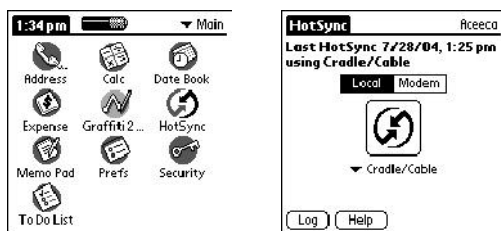


Figure 4

WARNING: For safety reasons, ensure the Meazura™ is completely dry before using the electrical charger.
(Charging time varies depending on battery level)

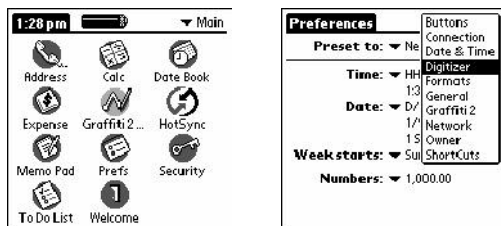


4. HotSync®



- Ensure Palm Desktop software is installed on your computer (see step 1 'Setup')
- Connect the communications cable to your Meazura™ and your computer as per instructions over page in step 2 ('Connect').
- On your Meazura™ RDA, tap on the HotSync icon (as pictured left).
- Tap the large icon in the center of the screen to start the HotSync operation.
- Follow all instructions on your PC and your Meazura™.

5. Calibration



This procedure calibrates the touch sensitive screen on your Meazura™

- Tap on the 'Prefs' icon
- From the dropdown list, choose "Digitizer"
- Follow on-screen instructions

Other preferences for setting up your handheld can be found in the drop down list, such as "Date and Time". To adjust these extra settings, simply tap the setting choice in dropdown list and follow the on-screen instructions.

6. Resetting

Soft Reset (no loss of data)



Press and release Power and Backlight button together

Hard Reset (restores Meazura™ to factory settings)



1. Press and hold the Power and Backlight button together then release the Backlight button only
2. Release the Power button when the Palm Powered logo appears
3. Follow on-screen instructions



7. Contrast/Backlight



Backlight

To turn on the backlight, press the Backlight button (pictured right)



Contrast

To adjust the contrast of the screen, hold the backlight button for 1.5 seconds to bring up the contrast slider on-screen (as pictured left).

- Use your stylus to drag the slider bar until you reach your desired contrast, then click 'Done'.

EDiT iD Ruggedised Palm Reader Installation Guide



Before you start

The Aceeca Palm must have a BigROM Version of **MEZ1000503rc3.6 or later** to operate the EDiT iD Ruggedised Palm Reader. You can check the version of BigROM your Palm is operating by:

1. Selecting "Device Info" on the main menu.
2. Next to the "BigROM" heading the version of BigROM is displayed. It must be **MEZ1000503rc3.6 or later**

If you do not have or are unsure if you have BigROM **MEZ1000503rc3.6 or later** call your Aceeca dealer for an upgrade.

FCC Statement - FCC ID: RAL-0403

When attached to the Aceeca Meazura™ RDA, This device complies with Part 15 of the FCC Rules. Operation is subject to the following two conditions: (1) this device may not cause harmful interference, and (2) this device must accept any interference received, including interference that may cause undesired operation.







Note: The manufacturer is not responsible for any Radio or TV interference caused by unauthorised modifications to this equipment. Such modifications could void the user's authority to operate the equipment.

What you need

Your Aceeca Palm
EDiT iD Ruggedised Palm Reader with the two screws
Pozi Drive or Torx Screwdriver to remove existing head (if supplied)
Square Head 00 Screw Driver (Adjustable Torque Screwdriver, if available)

How to Install the EDiT iD Ruggedised Palm Reader

Important: Before carrying out any of the below steps ensure your Palm and your hands are clean and dry and the Palm is turned off.

<p>If your Palm has been supplied without a standard IR head, please skip steps 1 to 3!</p> <p>1. Remove the stylus from the slot in the Palm and place it aside.</p>	
<p>2. Using a Pozi Drive Screwdriver remove the two screws from the top of the Palm.</p>	
<p>3. Carefully remove the existing Palm insert from the top of the Palm.</p>	
<p>4. Holding the blue top of the EDiT iD Ruggedised Palm Reader, carefully insert it with the "EDiT iD" logo facing the same side as the Palm screen.</p>	
<p>5. Press carefully so that the EDiT iD Ruggedised Palm Reader is completely sealed around the top of the Palm.</p>	
<p>6. Use a Square Head Screw driver, insert the two longer screws provided into the top of the EDiT iD Ruggedised Palm Reader.</p> <p>Note: To maintain the water and dust proof seal, tighten the screws to 40cNm (or .4Nm) with the adjustable torque screwdriver.</p>	
<p>DO NOT OVER TIGHTEN THE SCREWS AS THIS MAY DAMAGE THE EDiT iD RUGGEDISED PALM READER OR YOUR PALM.</p>	



EDiT Ruggedised RFID Palm Reader and Aceeca Ruggedised Palm

EDiT Ruggedised Palm Reader



Robust

- Waterproof in up to one meter of water
- Dustproof
- Withstands impacts on rough jobs
- Ideal for farm or industrial use



One Fully Integrated Unit

- Easily carried and handled in the field
- 128MB non-volatile memory ensures data security during power loss
- Reads both HDX and FDX-B agricultural ISO tags up to 140mm from the head of the Palm
- 125kHz industrial reader option available



Software Is Available For Immediate Use With ISO 134.2 Khz Tags

- View animal info quickly by scanning the EID tag or with a visual search
- With six data entry fields you can enter and save your most important data
- All data is saved to Non-Volatile memory for peace of mind
- Data is transferred between your Palm and Excel Spreadsheets on your PC



Software Development Notes Available

- The EDiT Ruggedised Palm Reader can operate on Palm OS Meazura software with the appropriate development

Aceeca Ruggedised Palm and EDiT Ruggedised Palm RFID Reader
For more information contact EDiT iD

Phone +64 9 270 2480 Email: info@editid.co.nz Internet: www.editid.co.nz



EDiT Ruggedised Palm RFID Reader Specifications

Specifications	Description
Additional Memory in Reader	Non - Volatile 128 megabytes Flash Memory
134.2 kHz EDiT Palm Reader Performance	HDX Read Range: 140mm from head of Palm FDX-B Read Range: 140mm from head of palm
125 kHz EDiT Palm Reader Performance	HDX Read Range: 140mm from head of Palm FDX-B Read Range: 140mm from head of palm
Standards & Compliance	ISO Standards 11784 & (partial) 11785 AS/NZS 4268:2003 ETSI EN 300330-2, V1.1.1, 2001 FCC 47 CFR Part 15 Subpart C (refer to warnings below)
Software Integration Ability	EDiT Tag Recorder Practical Systems Stock Hand Software Development Notes available: info@editid.co.nz



EDiT Tag Recorder Software Specifications

Specifications	Description
Information Storage per Animal per File:	Two Compulsory and Six Customisable Fields
Compulsory Fields Detail	Electronic ID (EID): ISO EID number only - Entered by scanning EID tag or PC download Visual ID (VID): Alpha numeric, up to 12 digits - Entered by Palm entry or PC download
Customisable Fields Detail	Alpha numeric, up to 12 digits - Entered by Palm entry or PC download User Entered Headings Optional Repeat Function
Total Animals per File	Up to 999 animals
Total Files Stored	Up to 128MB of storage space
Animal Search Options	Reading an EID Tag Displays all animal details within the open file Visual Tag Search From list or user entered value Displays all animal details within the open file
PC Interface	Palm OS Hot Sync Manager by default Proprietary PC Software converts Palm database files to comma separated values (CSV) file and visa versa CSV files can be opened directly to PC Excel spreadsheet
Data Storage on the Palm	All data is saved to 128MB of Non-Volatile memory

Specifications subject to change at any time. Please contact EDiT iD for latest revision.

Rev: 0403-5.04-110706

Aceeca Ruggedised Palm and EDiT Ruggedised Palm RFID Reader

For more information contact EDiT iD

Phone +64 9 270 2480 Email: info@editid.co.nz Internet: www.editid.co.nz



Aceeca Ruggedised Palm Specifications

<http://www.aceeca.com>

Specifications	Description	Remarks
Operating System	Palm OS® 4.1.2	Upgradeable to Palm OS® 4.x.
Microprocessor	33MHz Motorola DragonBall-VZ	
Memory Volatile Non – Volatile Expansion	16 megabytes SDRAM 4 megabytes Flash via MZIO™ bus	Approx 15MB available to user. Approx 2MB available to user. Supports multiple formats.
Display LCD Type Resolution Viewable Area Touch Screen Backlight	FSTN (TDF) grayscale 160 x 160 pixels 56mm (W) x 56mm (H) Analog Resistive Electro luminescent	
Communications USB Serial (RS232) Infrared (IrDA)	1 megabyte / sec 1200 to 115200 bits / sec 1200 to 115200 bits / sec at 1meter	
Comms Connector	13 pin - custom gold plated pins	Cradle or communications cable.
MZIO™ Expansion Slot	68 pin - multi format support - used by EDiT Reader when attached	Includes: Parallel Interface, UART x 2, SPI Master / Slave.
Battery Type Voltage Capacity Protection Charging Current Charging Input	Lithium Ion, custom battery pack 3.6V nominal 1900 mAh Over charge / discharge and thermal 1.2A (maximum) 9V DC nominal	Rechargeable. Via cradle or comms cable. Use only charger supplied.
Mechanical Dimensions Weight	169.5mm (L) x 94mm (W) x 39mm (H) 430gm (approx)	
Environmental Operating Temperature Storage Temperature Humidity RFI / EMC FCC CE Sealing	32°F to 122°F (0°C to 50°C) 14°F to 140°F (-10°C to 60°C) 5% to 90% relative humidity CSPR22, CSPR24 47 CFR Part 15, Class A EU EMC Directive IP67	Non-condensing. RF emissions & ESD immunity. Submersible to 1 meter (30 min).
Current Consumption Power on Full System Sleep Mode	21mA typical 60mA typical 1 to 2mA typical	Meazura only - backlight off. Backlight on.

Specifications subject to change at any time. Please contact Aceeca for latest revision.

Rev: 111803-1531

Aceeca Ruggedised Palm and EDiT Ruggedised Palm RFID Reader
For more information contact EDiT iD
 Phone +64 9 270 2480 Email: info@editid.co.nz Internet: www.editid.co.nz