



RCV-110R

2.4GHz Wireless Receiver Dongle



QuickGuide

English

www.adesso.com

LIMITED WARRANTY

Adesso provides a one year limited warranty for all of its products against defects in material and workmanship.

During this period, Adesso will repair or replace any product which proves to be defective. However, Adesso will not warranty any product which has been subject to improper freight handling, shipping abuse, neglect, improper installation or unauthorized repair. The warranty will not cover products installed with components not approved by Adesso and products where the sealed assembly trace has been broken.

If you discover a defect, Adesso will, at its option, repair or replace the product at no charge to you provided you return it during the warranty period with freight charges pre-paid to Adesso. Before returning any product, you must obtain a Return Merchandise Authorization number (RMA). This RMA # must be clearly marked on the outside of the package you are returning for warranty service. Be certain to also include your name, shipping address (no PO Boxes), telephone number, and a copy of the invoice showing proof of purchase in the package.

SUPPORT

We have listed most of our FAQ's (Frequently Asked Questions) at <http://www.adesso.com/faqs.asp>. Please visit our FAQ Service & you contact our E-mail or Telephone Support.

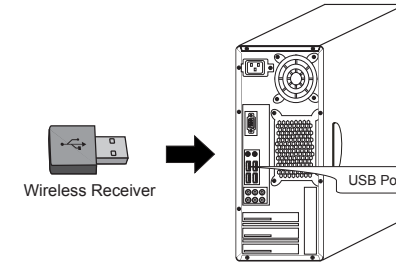
Email Support: If our FAQ's do not help you resolve your problem, please contact our support@adesso.com.

Telephone Support:

Toll Free: (800) 795-6788
9:00AM to 5:00PM PST Monday - Friday

INSTALLATION

1. Plug the Wireless Receiver into your computer's available USB port.



2. Your computer's operating system will automatically detect and connect the device (this device is plug and play, no driver is required). Your wireless device is now ready to use.

TROUBLESHOOTING:

If you cannot get your wireless device to work after installation try the following:

1. Make sure you are using new batteries and verify they are properly installed in battery compartment.
2. Ensure Power Switch on your wireless device is set to **ON**. Then press the **Connect** Button to establish wireless connection.
3. Ensure that the Wireless Receiver is securely plugged into a properly powered USB port on your computer.

①

②

③

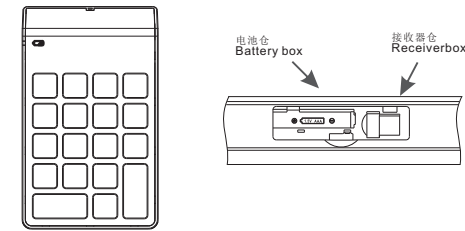
序号	修改记录	修订	批准

140.0 mm

199.0 mm



键盘图 (Wireless Combo Photo)



支持平台(System platform)

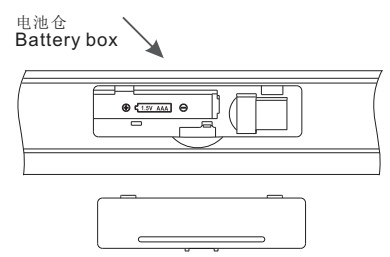
平台系统：微软视窗Win2000/XP/Vista/7。
Compatibility: Windows 2000/XP/Vista/7.

安装步骤(Installation Steps)

- 将接收器插入电脑空余的USB端口，在电脑开启状态下，接收器在插入USB端口后的10秒钟左右，会自动安装硬件所需的驱动程序。
In the state of computer opening, Put the Receiver into USB Connector, After 10 seconds, it will auto install the driving process of hardware.
- 打开键盘产品底部的电池盖。
Opening the battery cover of the Mouse and keyboard.
- 按电池仓所指示的极性装入电池，请勿反装电池，产品会自动选择与之配对接收器。
Install the battery in correct position.
- 您的无线鼠标、键盘全部安装完毕。
Installation is over.

电池安装说明 (Installation of battery)

将一节7号电池按电池仓内的正负标示方向装入键盘的电池仓内，盖好电池门盖。
Put two pieces 7-AAA battery into battery cassette in correct position.



提示 (Tips)

- 产品在出厂前已完成对码操作，不需要再对码。
Finish code before delivering.
- 在更换电池时，将接收器脱离电脑，以免掉码或死机。
Pull out the receiver from computer when change the battery. Avoid to the computer crash or off code.
- 长期不使用时，请把电池取出来分开保管，以免电池漏液将产品损坏。
If no use for long time, Please take out the battery from products., To avoid damaging the products.

		(设计者) <i>Wanghin</i>	(日期) 2012/06/08
		DWG. BY:	DATE:
		(核对)	(日期)
		CHK. BY:	DATE:
		(核准)	(日期)
		APP. BY:	DATE:
(公差)	(品名)	(单位)	(比例)
Tolerances	TITLE:	UNIT: mm	SCALE: 1:1
LINEAR	(型号)	(用量)	(列印)
ANGLES	MODEL NO.	PCS/SET	PRINT:
	(材质)	(张号)	(版本)
	MATERIAL:	SHT OF	REV NO. 01
		(件号)	(图号)
		PART NO.	DWG. NO.

FCC Certification Requirements

Caution: Any changes or modifications in construction of this device which are not expressly approved by the party responsible for compliance could void the user's authority to operate the equipment.

This device complies with part 15 of the FCC Rules. Operation is subject to the following two conditions: (1) This device may not cause harmful interference, and
(2) This device must accept any interference received, including interference that may cause undesired operation.