

**User's guide**

# **WLAN 11g USB Dongle**

**Model:** XWL-11GUZX

**Important:** *Please do not connect your Company USB Wireless LAN Dongle to the USB port of your computer before installing the Company WLAN Utility and Driver.*

## System Requirements

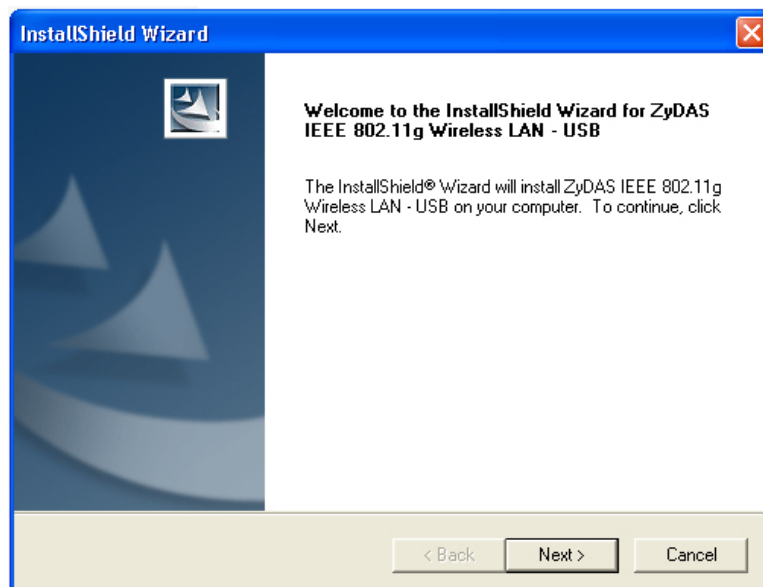
- Notebook PC or desktop PC with one free USB port
- 32MB memory or greater
- 300MHz processor or higher
- Microsoft Windows XP / Windows 2000 / Windows Millennium Edition / Windows 98 Second Edition

## Driver Installation

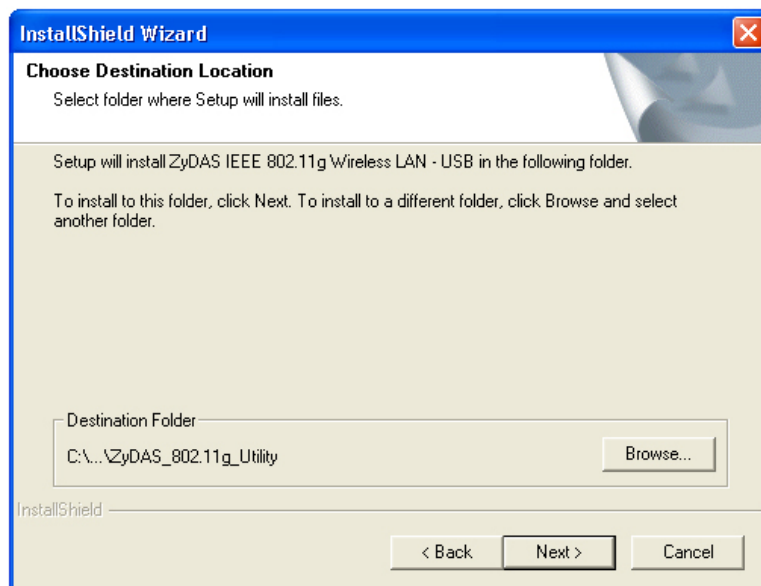
**Important:** Please do not connect your Company USB Wireless LAN Dongle to the USB port of your computer before installing the Company WLAN Utility and Driver.

1. Insert the Company WLAN Utility and Driver CD in the CD-ROM drive and wait until the following welcome screen appears on your screen. Click [Next].

**Note:** In case this screen does not appear, in Windows Explorer browse to your CD-ROM and double-click the Setup.exe file.



2. Click [Next] to accept, or [Browse] to change the default destination folder.

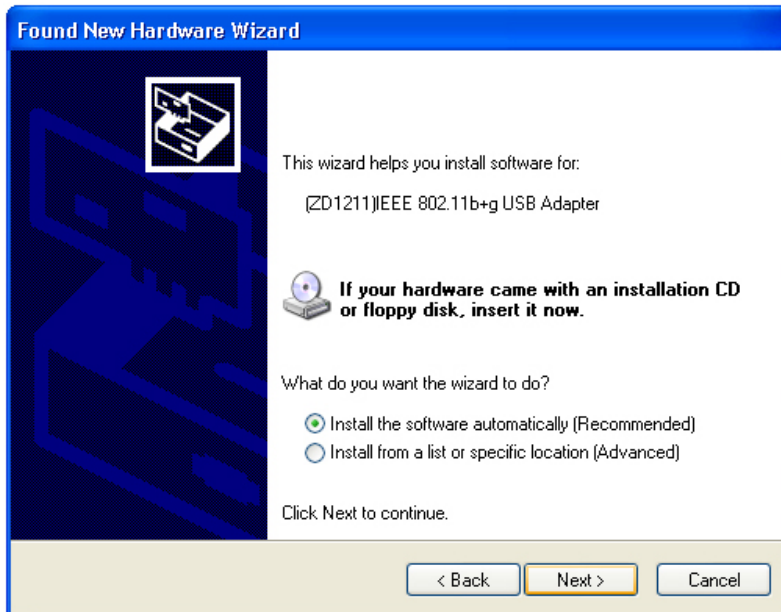


**Note:** In some setups of Windows 2000 and Windows XP a Microsoft Digital Signature warning may appear on your screen. Click [Yes] or [Continue anyway] to continue the installation.

3. Now connect your Company USB Wireless LAN Dongle to a USB port of your computer. In the *Find New Hardware Wizard* that appears on your screen select [No, not this time], and click [Next].

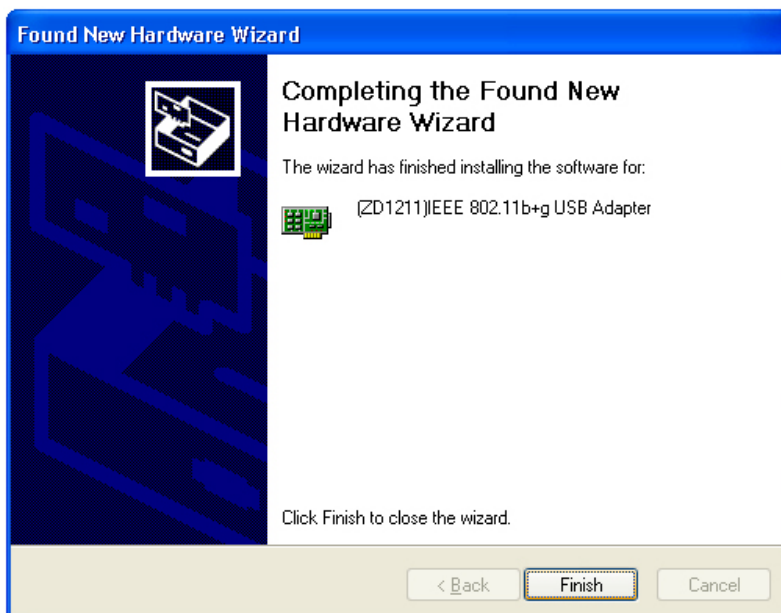


5. Select [Install the software automatically (Recommended)], and click [Next].



**Note:** In some setups of Windows 2000 and Windows XP a Microsoft Digital Signature warning may appear on your screen. Click [Yes] or [Continue anyway] to continue the installation.

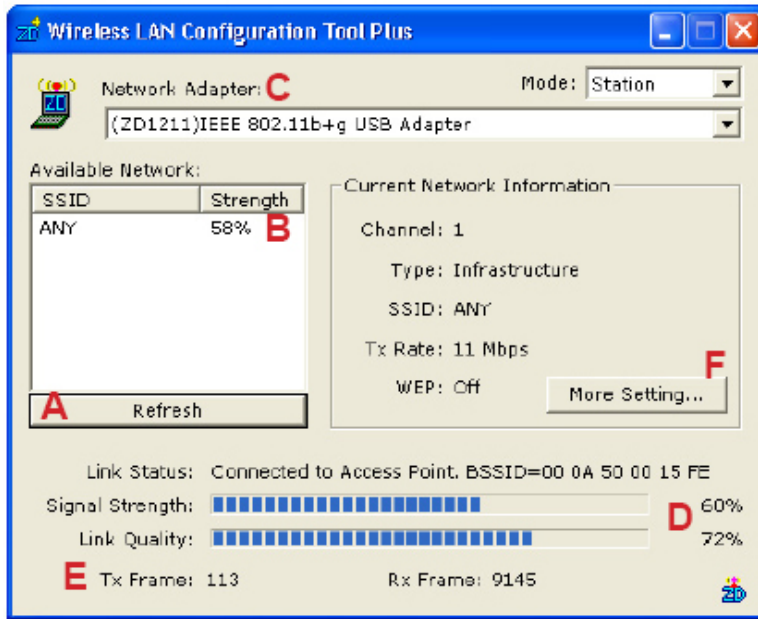
6. Click [Finish] to finalize the installation. Your Company USB Wireless LAN Dongle is now ready for use. Please refer to the electronic user's guide on the Company WLAN Utility and Driver CD-ROM for further directions as to the configuration of your dongle.



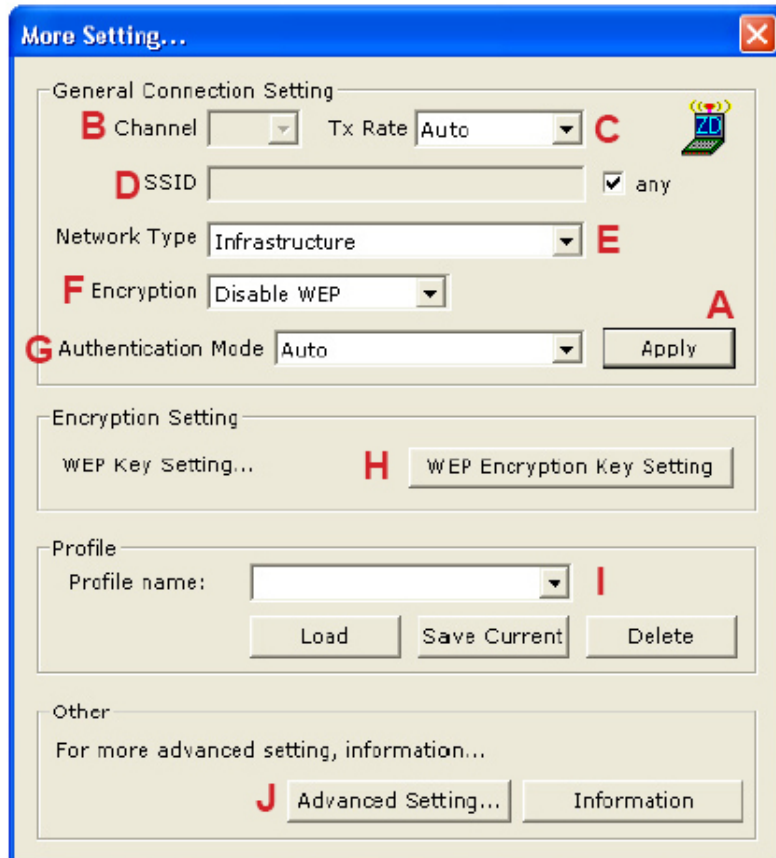
## Using the Company WLAN utility

Open the Company WLAN utility by double-clicking the Company icon in the system tray, or by clicking [Start] > [Programs] > [Company WLAN Utility].

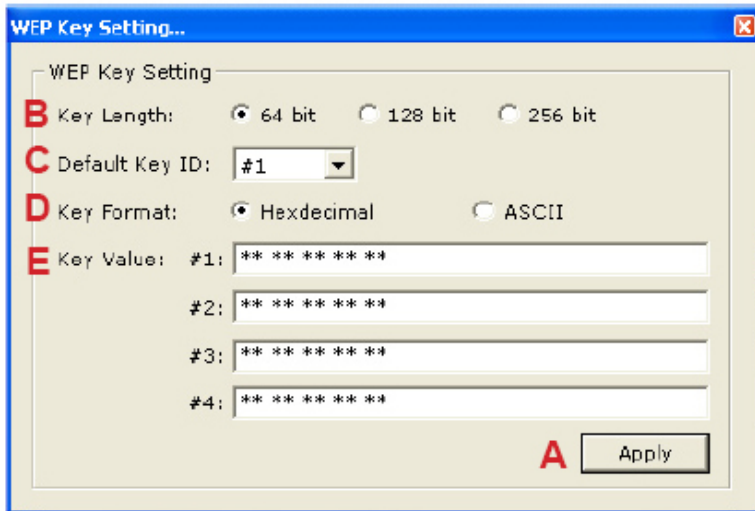
**Note:** In Windows XP, please disable the *Zero Configuration* feature when prompted to do so.



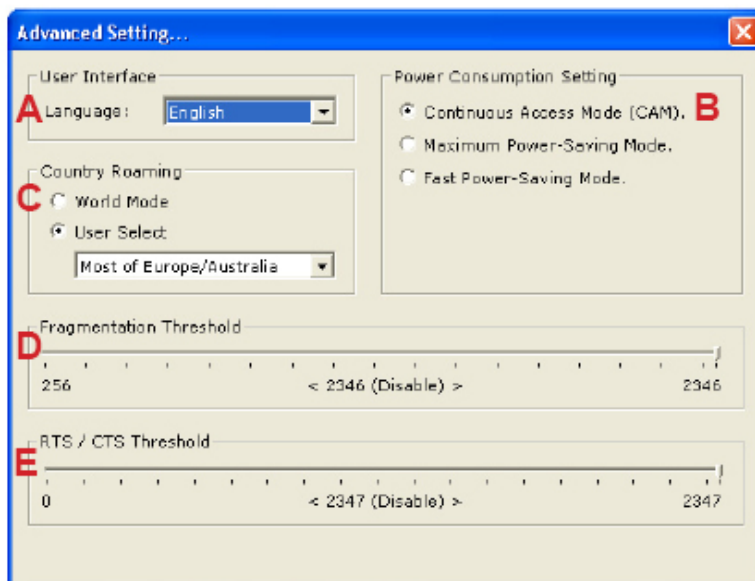
- A.** Click on the *Refresh* button to see all available SSID networks.
- B.** You can select an SSID network by clicking on its name in the *Available Network* field. Details will then be shown in the *Current Network Information* field.
- C.** The *Network Adapter* field shows the name of the wireless network adapter.
- D.** The *Signal Strength* and *Link Quality* values are shown in block diagrams as well as in percentages.
- E.** At the lower end of this screen you can see the number of transmitted and received frames.
- F.** Click on the *More Settings* button to bring up the following screen:



- A.** Click on the *Change/Apply* button to modify the settings in the *General Connection Setting* field.
- B.** Select the channel in ad-hoc mode from the *Channel* drop-down menu.
- C.** Select the transmission speed from the *Tx Rate* drop-down menu.
- D.** Untick the *Any* box to select another *SSID* network.
- E.** Select *Infrastructure* or *Ad-hoc* mode from the *Network Type* drop-down menu.
- F.** Select *Enable WEP* or *Disable WEP* from the *Encryption* drop-down menu.
- G.** Select *Open System*, *Shared Key*, or *Auto* from the *Authentication Mode* drop-down menu.
- H.** Click on the *WEP Encryption Key Setting* button to modify the WEP key settings. A new screen will appear (see hereafter).
- I.** Select a previously saved profile from the *Profile Name* drop-down menu, and click on the *Load* button to load the profile into memory. Alternatively, key in the profile name and click on the *Save Current* or *Delete* button to respectively save or remove the profile.
- J.** For advanced settings or information about the software, click on the *Advanced Settings* or the *Information* button.



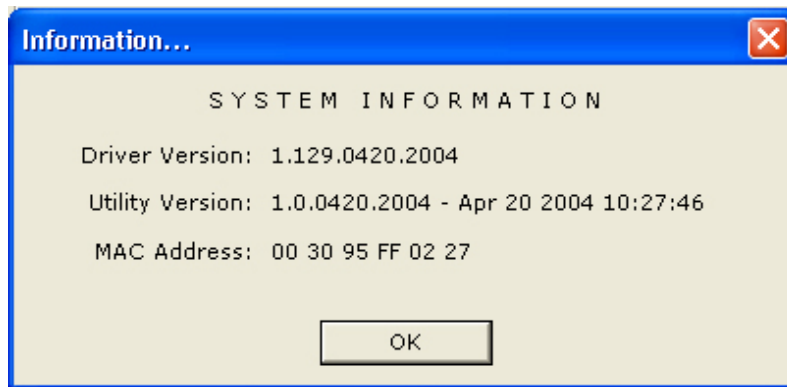
- A. Click on the *Change/Apply* button to modify the WEP key settings.
- B. Select an encryption key length of 64-bit, 128-bit, or 256-bit.
- C. Select the default key ID.
- D. Select *Hexadecimal* or *ASCII* in the *Key Format* field.
- E. Key in the values of the WEP keys in the *Key Value* field.



- A. Select *English* from the *Language* drop-down menu.
- B. Select the power saving mode. Power consumption is related to the data throughput. *CAM* mode (default) gives the highest power consumption/data throughput ratio, whereas *Fast* and *Maximum* offer resp. better and best power savings (but less performance).
- C. Select *World Mode* or your region from the *User Select* drop-down menu in the *Country Roaming* field, and experiment to get the best results.
- D. Move the slider in the *Fragmentation Threshold* bar to adjust the threshold between 256-bytes and 2346-bytes.

E. Move the slider in the *RTS / CTS Threshold* bar to adjust the RTS threshold between 0 and 2347-bytes.

Click on the *Information* button in the *More Settings* screen to check the driver and utility version, and the MAC address in this screen:



---

Federal Communication Commission Interference Statement

## **Federal Communications Commission (FCC) Requirements, Part 15**

This equipment has been tested and found to comply with the limits for a class B digital device, pursuant to part 15 of the FCC Rules. These limits are designed to provide reasonable protection against harmful interference in a residential installation. This equipment generates, uses and can radiate radio frequency energy and, if not installed and used in accordance with the instructions, may cause harmful interference to radio communications. However, there is no guarantee that interference will not occur in a particular installation. If this equipment does cause harmful interference to radio or television reception, which can be determined by turning the equipment off and on, the user is encouraged to try to correct the interference by one or more of the following measures:

1. Reorient or relocate the receiving antenna.
2. Increase the separation between the equipment and receiver.
3. Connect the equipment into an outlet on a circuit different from that to which the receiver is connected.
4. Consult the dealer or an experienced radio/TV technician for help.

This device complies with Part 15 of the FCC Rules. Operation is subject to the following two conditions:

- (1) This device may not cause harmful interference.
- (2) This device must accept any interference received, including interference that may cause undesired operation.



FCC Caution:

FCC RF Exposure Statement:

This equipment complies with FCC RF radiation exposure limits set forth for an uncontrolled environment. This device and its antenna must not be co-located or operating in conjunction with any other antenna or transmitter.

Use only with supplied antenna. Unauthorized antenna, modification, or attachments could damage the transmitter and may violate FCC regulations.

## **Regulatory information / Disclaimers**

Installation and use of this Wireless LAN device must be in strict accordance with the instructions included in the user documentation provided with the product. Any changes or modifications (including the antennas) made to this device that are not expressly approved by the manufacturer may void the user's authority to operate the equipment. The manufacturer is not responsible for any radio or television interference caused by unauthorized modification of this device, or the substitution of the connecting cables and equipment other than manufacturer specified. It is the responsibility of the user to correct any interference caused by such unauthorized modification, substitution or attachment. Manufacturer and its authorized resellers or distributors will assume no liability for any damage or violation of government regulations arising from failing to comply with these guidelines.

CE Warning:

Regulatory statement ( R&TTE / WLAN IEEE 802.11 b/g )

European Standards dictate maximum radiated transmit power of 100mW EIRP and frequency range 2.400-2.4835GHz; In France, the equipment must be restricted to the 2.4465-2,4835GHz frequency range and must be restricted to indoor use.

CE Declaration of Conformity:

For the following equipment: Wireless LAN Card Bus

**CE0984①**

Is herewith confirmed to comply with the requirements set out in the Council Directive on the Approximation of the Laws of the Member States relating to Electromagnetic Compatibility (89/336/EEC),

Is herewith confirmed to comply with the requirements set out in the Council Directive on the Approximation of the Laws of the Member States relating to Electromagnetic Compatibility (89/336/EEC), Low-voltage Directive (73/23/EEC) and the Amendment Directive (93/68/EEC), the procedures given in European Council Directive 99/5/EC and 89/336/EEC. The equipment was passed. The test was performed according to the following European standards:

- EN 300 328-2 V1.2.1 (2001-08)
- EN 301 489-1 V.1.4.1 (2002-04) / EN 301 489-17 V.1.2.1 (2002-04)

- EN 50371: 2002
- EN 60950: 2000