

### System Check\_Head\_835MHz\_150216

**DUT: D835V2 - SN:4d091**

Communication System: CW; Frequency: 835 MHz; Duty Cycle: 1:1

Medium: HSL\_835\_150216 Medium parameters used:  $f = 835 \text{ MHz}$ ;  $\sigma = 0.884 \text{ mho/m}$ ;  $\epsilon_r = 41.053$ ;

$\rho = 1000 \text{ kg/m}^3$

Ambient Temperature :  $23.5 \text{ }^\circ\text{C}$  ; Liquid Temperature :  $22.6 \text{ }^\circ\text{C}$

DASY5 Configuration:

- Probe: EX3DV4 - SN3857; ConvF(9.41, 9.41, 9.41); Calibrated: 2014.05.23
- Sensor-Surface: 2mm (Mechanical Surface Detection)
- Electronics: DAE4 Sn1210; Calibrated: 2014.05.19
- Phantom: SAM1; Type: SAM; Serial: TP-1479
- Measurement SW: DASY52, Version 52.8 (8); SEMCAD X Version 14.4.5 (3634)

**Pin=250mW/Area Scan (61x61x1):** Measurement grid:  $dx=15\text{mm}$ ,  $dy=15\text{mm}$

Maximum value of SAR (interpolated) =  $2.848 \text{ mW/g}$

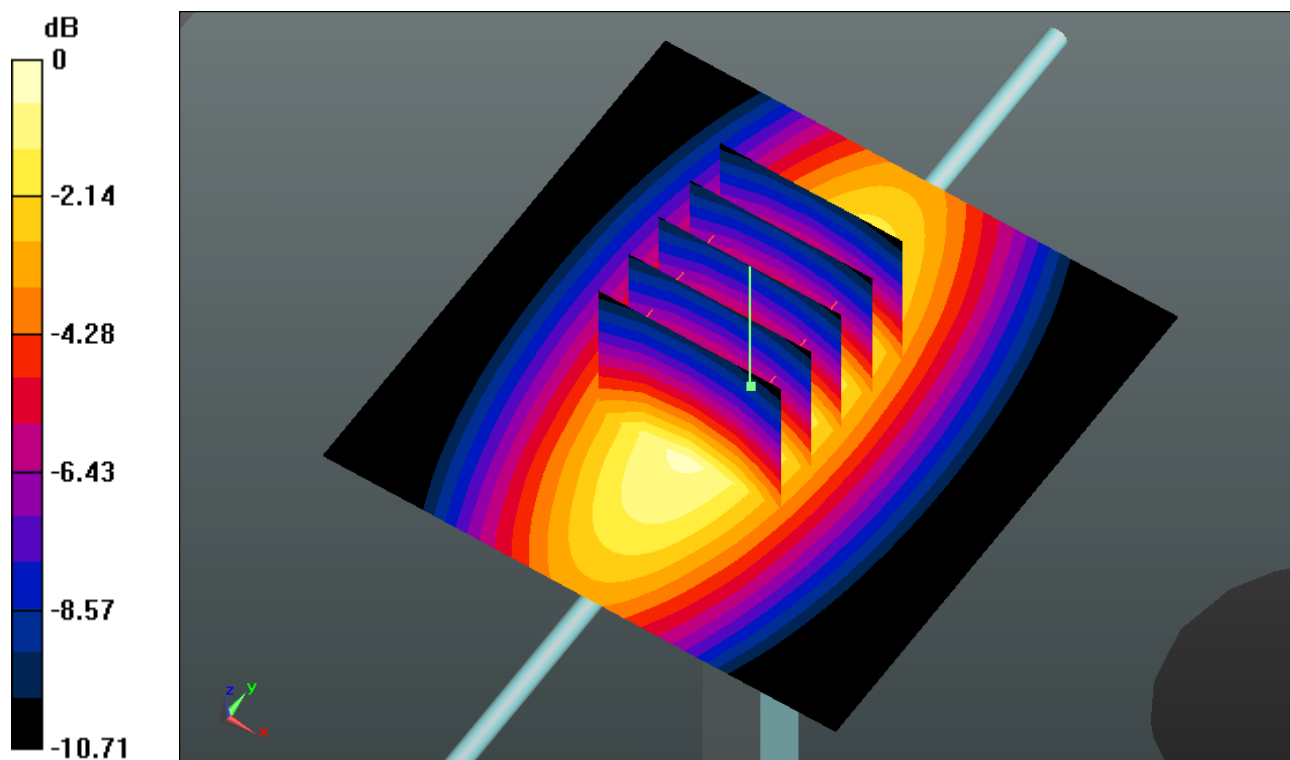
**Pin=250mW/Zoom Scan (5x5x7)/Cube 0:** Measurement grid:  $dx=8\text{mm}$ ,  $dy=8\text{mm}$ ,  $dz=5\text{mm}$

Reference Value =  $52.265 \text{ V/m}$ ; Power Drift =  $0.09 \text{ dB}$

Peak SAR (extrapolated) =  $3.479 \text{ W/kg}$

**SAR(1 g) =  $2.35 \text{ mW/g}$ ; SAR(10 g) =  $1.54 \text{ mW/g}$**

Maximum value of SAR (measured) =  $2.967 \text{ mW/g}$



0 dB =  $2.970\text{mW/g}$

### System Check\_Head\_835MHz\_150415

**DUT: D835V2 - SN:4d091**

Communication System: CW; Frequency: 835 MHz; Duty Cycle: 1:1

Medium: HSL\_835\_150415 Medium parameters used:  $f = 835 \text{ MHz}$ ;  $\sigma = 0.905 \text{ mho/m}$ ;  $\epsilon_r = 42.264$ ;

$\rho = 1000 \text{ kg/m}^3$

Ambient Temperature :  $23.7 \text{ }^\circ\text{C}$ ; Liquid Temperature :  $22.8 \text{ }^\circ\text{C}$

DASY5 Configuration:

- Probe: EX3DV4 - SN3857; ConvF(9.41, 9.41, 9.41); Calibrated: 2014.05.23
- Sensor-Surface: 2mm (Mechanical Surface Detection)
- Electronics: DAE4 Sn1210; Calibrated: 2014.05.19
- Phantom: SAM1; Type: SAM; Serial: TP-1479
- Measurement SW: DASY52, Version 52.8 (8); SEMCAD X Version 14.4.5 (3634)

**Pin=250mW/Area Scan (61x61x1):** Measurement grid:  $dx=15\text{mm}$ ,  $dy=15\text{mm}$

Maximum value of SAR (interpolated) =  $2.891 \text{ mW/g}$

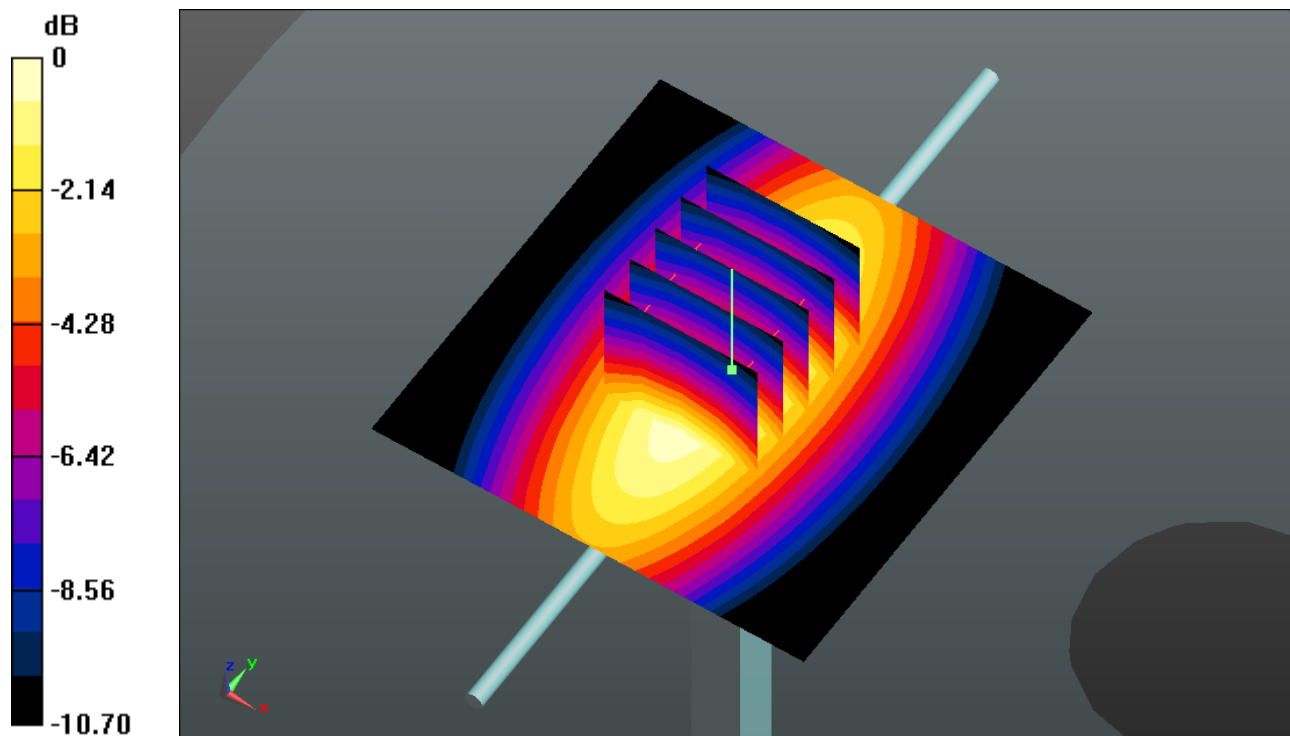
**Pin=250mW/Zoom Scan (5x5x7)/Cube 0:** Measurement grid:  $dx=8\text{mm}$ ,  $dy=8\text{mm}$ ,  $dz=5\text{mm}$

Reference Value =  $52.090 \text{ V/m}$ ; Power Drift =  $0.03 \text{ dB}$

Peak SAR (extrapolated) =  $3.382 \text{ W/kg}$

**SAR(1 g) =  $2.28 \text{ mW/g}$ ; SAR(10 g) =  $1.5 \text{ mW/g}$**

Maximum value of SAR (measured) =  $2.892 \text{ mW/g}$



0 dB =  $2.890 \text{ mW/g}$

### System Check\_Head\_1750MHz\_150217

**DUT: D1750V2 - SN:1069**

Communication System: CW; Frequency: 1750 MHz; Duty Cycle: 1:1

Medium: HSL\_1750\_150217 Medium parameters used:  $f = 1750$  MHz;  $\sigma = 1.373$  mho/m;  $\epsilon_r =$

$41.392$ ;  $\rho = 1000$  kg/m<sup>3</sup>

Ambient Temperature : 23.8 °C ; Liquid Temperature : 22.7 °C

DASY5 Configuration:

- Probe: EX3DV4 - SN3857; ConvF(8.55, 8.55, 8.55); Calibrated: 2014.05.23
- Sensor-Surface: 2mm (Mechanical Surface Detection)
- Electronics: DAE4 Sn1210; Calibrated: 2014.05.19
- Phantom: SAM2; Type: SAM; Serial: TP-1477
- Measurement SW: DASY52, Version 52.8 (8); SEMCAD X Version 14.4.5 (3634)

**Pin=250mW/Area Scan (61x61x1):** Measurement grid: dx=15mm, dy=15mm

Maximum value of SAR (interpolated) = 13.316 mW/g

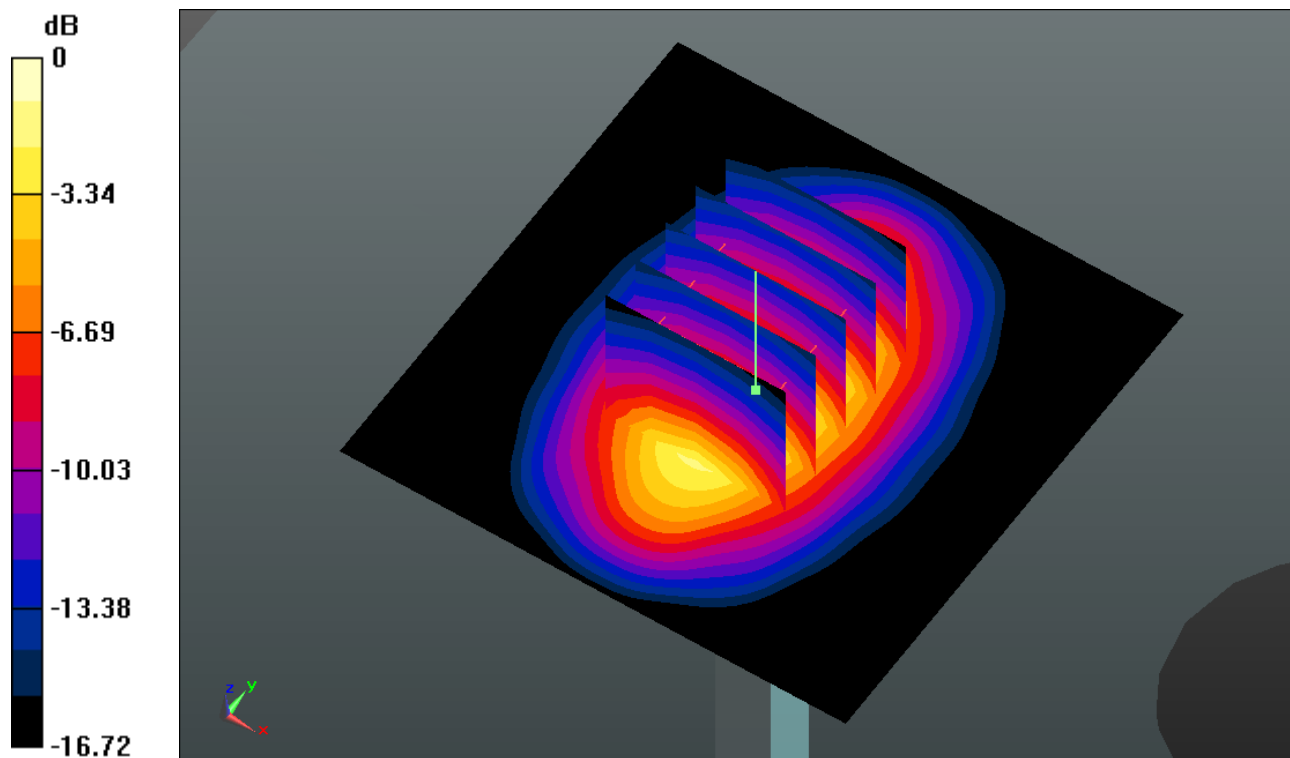
**Pin=250mW/Zoom Scan (5x5x7)/Cube 0:** Measurement grid: dx=8mm, dy=8mm, dz=5mm

Reference Value = 87.177 V/m; Power Drift = -0.03 dB

Peak SAR (extrapolated) = 16.799 W/kg

**SAR(1 g) = 9.33 mW/g; SAR(10 g) = 4.99 mW/g**

Maximum value of SAR (measured) = 13.288 mW/g



0 dB = 13.290mW/g

**System Check\_Head\_1750MHz\_150415**

**DUT: D1750V2 - SN:1069**

Communication System: CW; Frequency: 1750 MHz; Duty Cycle: 1:1

Medium: HSL\_1750\_150415 Medium parameters used:  $f = 1750$  MHz;  $\sigma = 1.407$  mho/m;  $\epsilon_r =$

41.718;  $\rho = 1000$  kg/m<sup>3</sup>

Ambient Temperature : 23.9 °C ; Liquid Temperature : 22.7 °C

DASY5 Configuration:

- Probe: EX3DV4 - SN3857; ConvF(8.55, 8.55, 8.55); Calibrated: 2014.05.23
- Sensor-Surface: 2mm (Mechanical Surface Detection)
- Electronics: DAE4 Sn1210; Calibrated: 2014.05.19
- Phantom: SAM2; Type: SAM; Serial: TP-1477
- Measurement SW: DASY52, Version 52.8 (8); SEMCAD X Version 14.4.5 (3634)

**Pin=250mW/Area Scan (61x61x1):** Measurement grid: dx=15mm, dy=15mm

Maximum value of SAR (interpolated) = 13.414 mW/g

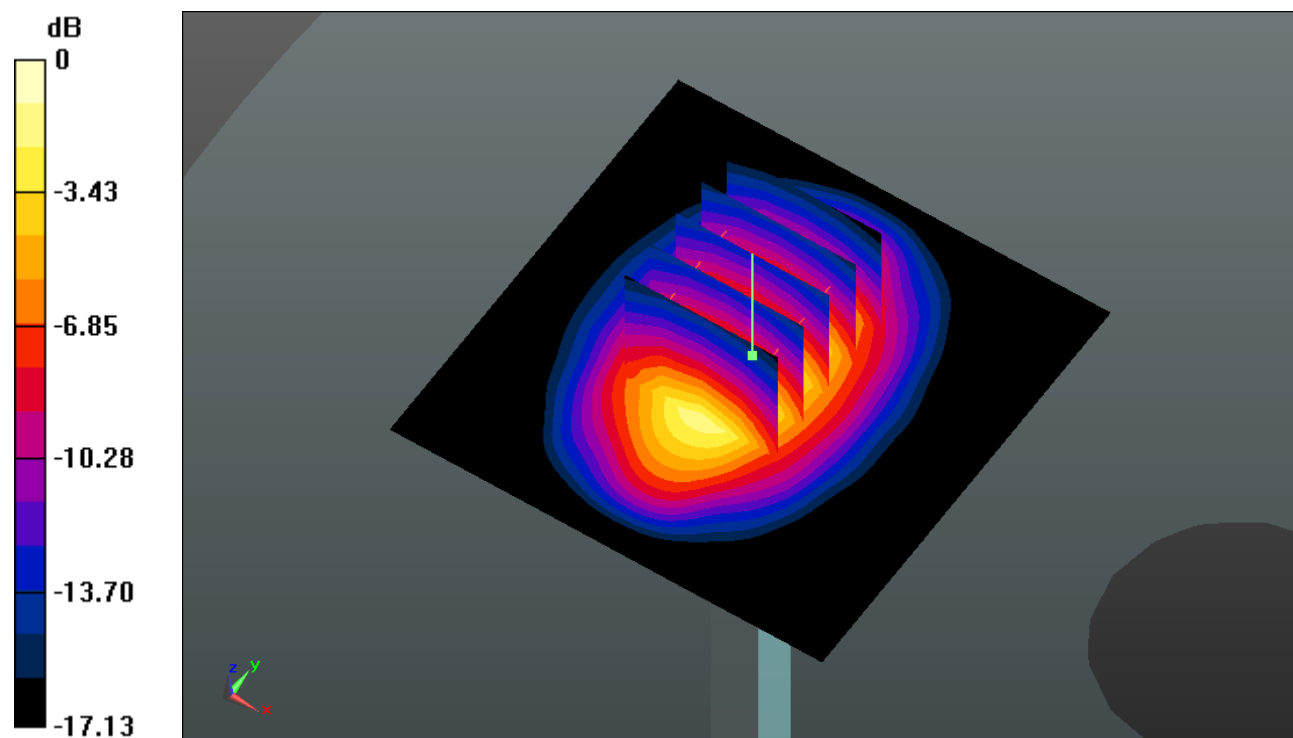
**Pin=250mW/Zoom Scan (5x5x7)/Cube 0:** Measurement grid: dx=8mm, dy=8mm, dz=5mm

Reference Value = 85.977 V/m; Power Drift = 0.05 dB

Peak SAR (extrapolated) = 16.777 W/kg

**SAR(1 g) = 9.38 mW/g; SAR(10 g) = 4.98 mW/g**

Maximum value of SAR (measured) = 13.322 mW/g



0 dB = 13.320mW/g

### System Check\_Head\_1750MHz\_150417

**DUT: D1750V2 - SN:1069**

Communication System: CW; Frequency: 1750 MHz; Duty Cycle: 1:1

Medium: HSL\_1750\_150417 Medium parameters used:  $f = 1750$  MHz;  $\sigma = 1.375$  mho/m;  $\epsilon_r =$

41.541;  $\rho = 1000$  kg/m<sup>3</sup>

Ambient Temperature : 23.6 °C ; Liquid Temperature : 22.7 °C

DASY5 Configuration:

- Probe: EX3DV4 - SN3857; ConvF(8.55, 8.55, 8.55); Calibrated: 2014.05.23
- Sensor-Surface: 2mm (Mechanical Surface Detection)
- Electronics: DAE4 Sn1210; Calibrated: 2014.05.19
- Phantom: SAM2; Type: SAM; Serial: TP-1477
- Measurement SW: DASY52, Version 52.8 (8); SEMCAD X Version 14.4.5 (3634)

**Pin=250mW/Area Scan (61x61x1):** Measurement grid: dx=15mm, dy=15mm

Maximum value of SAR (interpolated) = 13.335 mW/g

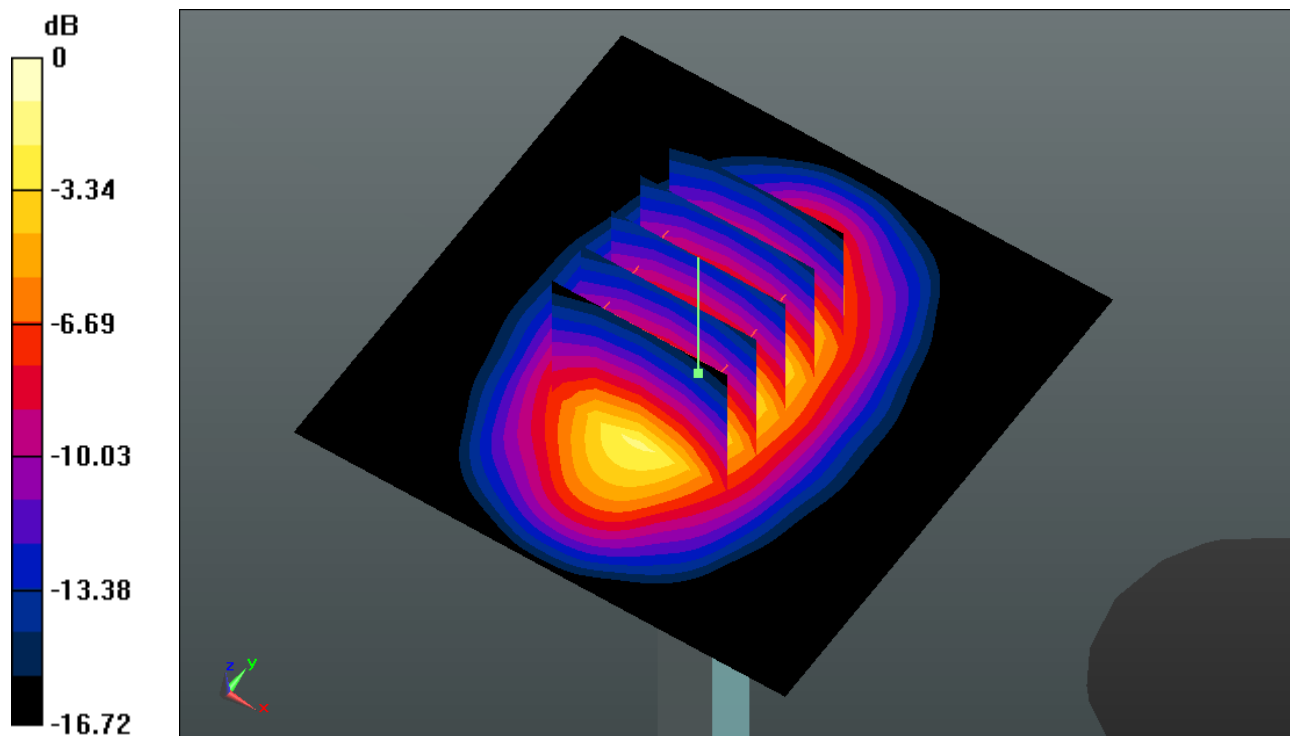
**Pin=250mW/Zoom Scan (5x5x7)/Cube 0:** Measurement grid: dx=8mm, dy=8mm, dz=5mm

Reference Value = 87.177 V/m; Power Drift = -0.03 dB

Peak SAR (extrapolated) = 16.824 W/kg

**SAR(1 g) = 9.35 mW/g; SAR(10 g) = 5 mW/g**

Maximum value of SAR (measured) = 13.307 mW/g



0 dB = 13.310mW/g

### System Check\_Head\_1900MHz\_150216

**DUT: D1900V2 - SN:5d118**

Communication System: CW; Frequency: 1900 MHz; Duty Cycle: 1:1

Medium: HSL\_1900\_150216 Medium parameters used:  $f = 1900$  MHz;  $\sigma = 1.425$  mho/m;  $\epsilon_r =$

$38.906$ ;  $\rho = 1000$  kg/m<sup>3</sup>

Ambient Temperature : 23.6 °C ; Liquid Temperature : 22.5 °C

DASY5 Configuration:

- Probe: EX3DV4 - SN3857; ConvF(8.4, 8.4, 8.4); Calibrated: 2014.05.23

- Sensor-Surface: 2mm (Mechanical Surface Detection)

- Electronics: DAE4 Sn1210; Calibrated: 2014.05.19

- Phantom: SAM2; Type: SAM; Serial: TP-1477

- Measurement SW: DASY52, Version 52.8 (8); SEMCAD X Version 14.4.5 (3634)

**Pin=250mW/Area Scan (61x61x1):** Measurement grid: dx=15mm, dy=15mm

Maximum value of SAR (interpolated) = 14.465 mW/g

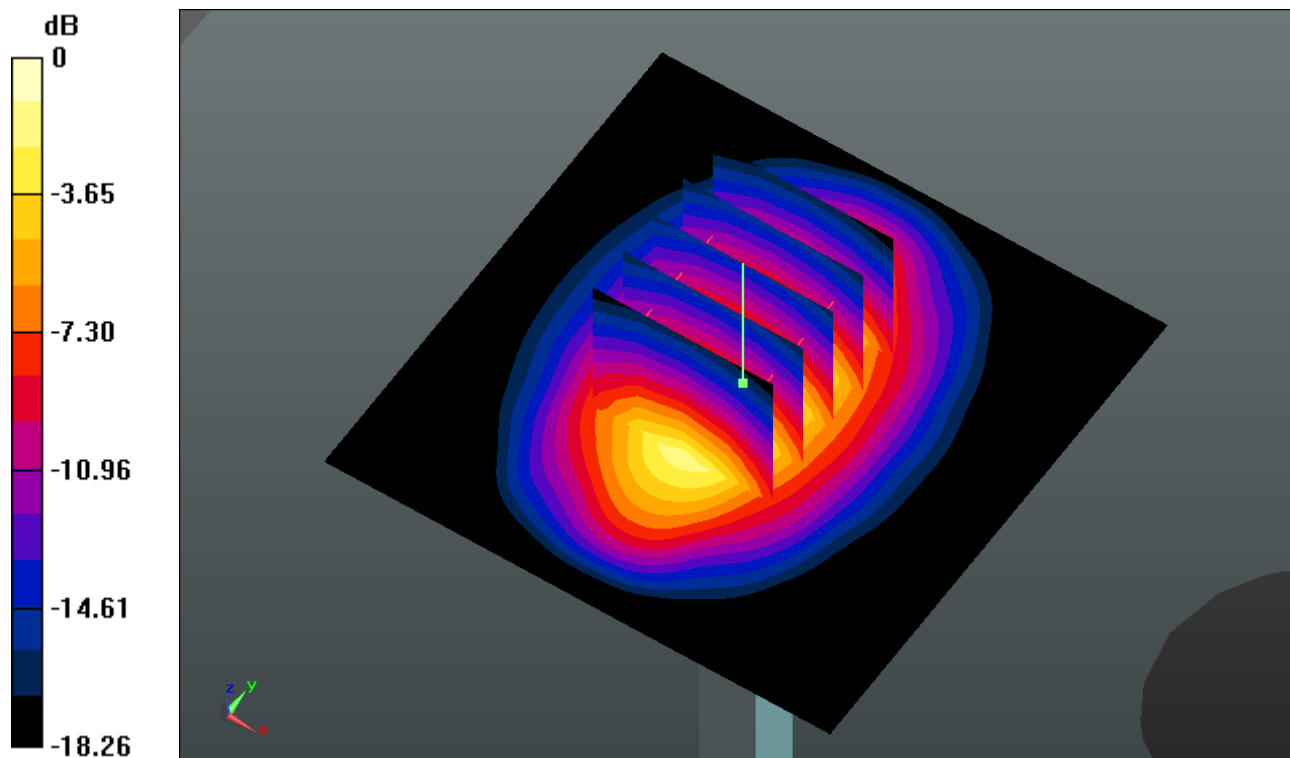
**Pin=250mW/Zoom Scan (5x5x7)/Cube 0:** Measurement grid: dx=8mm, dy=8mm, dz=5mm

Reference Value = 87.713 V/m; Power Drift = 0.12 dB

Peak SAR (extrapolated) = 18.712 W/kg

**SAR(1 g) = 10 mW/g; SAR(10 g) = 5.14 mW/g**

Maximum value of SAR (measured) = 14.589 mW/g



0 dB = 14.590mW/g

**System Check\_Head\_1900MHz\_150415**

**DUT: D1900V2 - SN:5d118**

Communication System: CW; Frequency: 1900 MHz; Duty Cycle: 1:1

Medium: HSL\_1900\_150415 Medium parameters used:  $f = 1900$  MHz;  $\sigma = 1.424$  mho/m;  $\epsilon_r =$

$38.988$ ;  $\rho = 1000$  kg/m<sup>3</sup>

Ambient Temperature : 23.6 °C ; Liquid Temperature : 22.8 °C

DASY5 Configuration:

- Probe: EX3DV4 - SN3857; ConvF(8.4, 8.4, 8.4); Calibrated: 2014.05.23
- Sensor-Surface: 2mm (Mechanical Surface Detection)
- Electronics: DAE4 Sn1210; Calibrated: 2014.05.19
- Phantom: SAM2; Type: SAM; Serial: TP-1477
- Measurement SW: DASY52, Version 52.8 (8); SEMCAD X Version 14.4.5 (3634)

**Pin=250mW/Area Scan (61x61x1):** Measurement grid: dx=15mm, dy=15mm

Maximum value of SAR (interpolated) = 13.784 mW/g

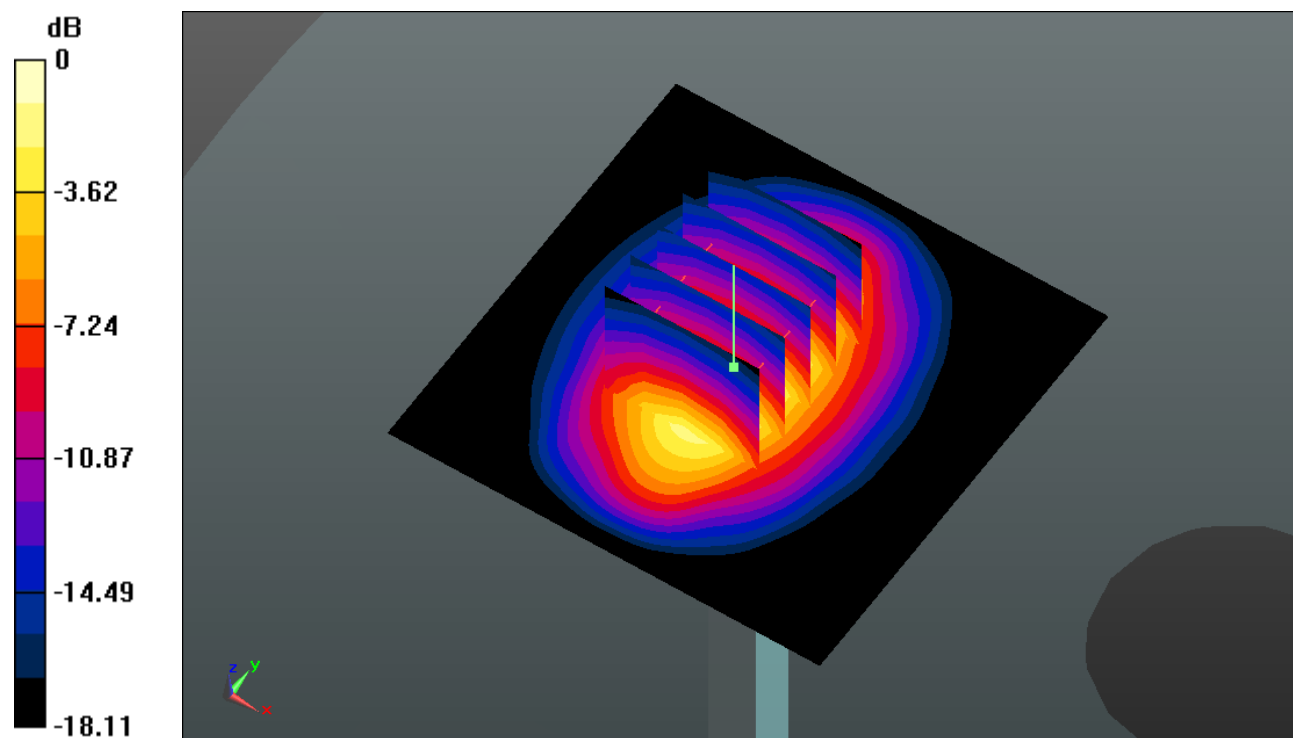
**Pin=250mW/Zoom Scan (5x5x7)/Cube 0:** Measurement grid: dx=8mm, dy=8mm, dz=5mm

Reference Value = 86.045 V/m; Power Drift = 0.09 dB

Peak SAR (extrapolated) = 17.635 W/kg

**SAR(1 g) = 9.57 mW/g; SAR(10 g) = 4.97 mW/g**

Maximum value of SAR (measured) = 13.761 mW/g



0 dB = 13.760mW/g

### System Check\_Head\_2450MHz\_150227

**DUT: D2450V2 - SN:840**

Communication System: CW; Frequency: 2450 MHz; Duty Cycle: 1:1

Medium: HSL\_2450\_150227 Medium parameters used:  $f = 2450$  MHz;  $\sigma = 1.819$  mho/m;  $\epsilon_r =$

$39.212$ ;  $\rho = 1000$  kg/m<sup>3</sup>

Ambient Temperature : 23.9 °C ; Liquid Temperature : 22.7 °C

DASY5 Configuration:

- Probe: EX3DV4 - SN3857; ConvF(7.48, 7.48, 7.48); Calibrated: 2014.05.23
- Sensor-Surface: 2mm (Mechanical Surface Detection)
- Electronics: DAE4 Sn1210; Calibrated: 2014.05.19
- Phantom: SAM2; Type: SAM; Serial: TP-1477
- Measurement SW: DASY52, Version 52.8 (8); SEMCAD X Version 14.4.5 (3634)

**Pin=250mW/Area Scan (71x71x1):** Measurement grid: dx=12mm, dy=12mm

Maximum value of SAR (interpolated) = 20.022 mW/g

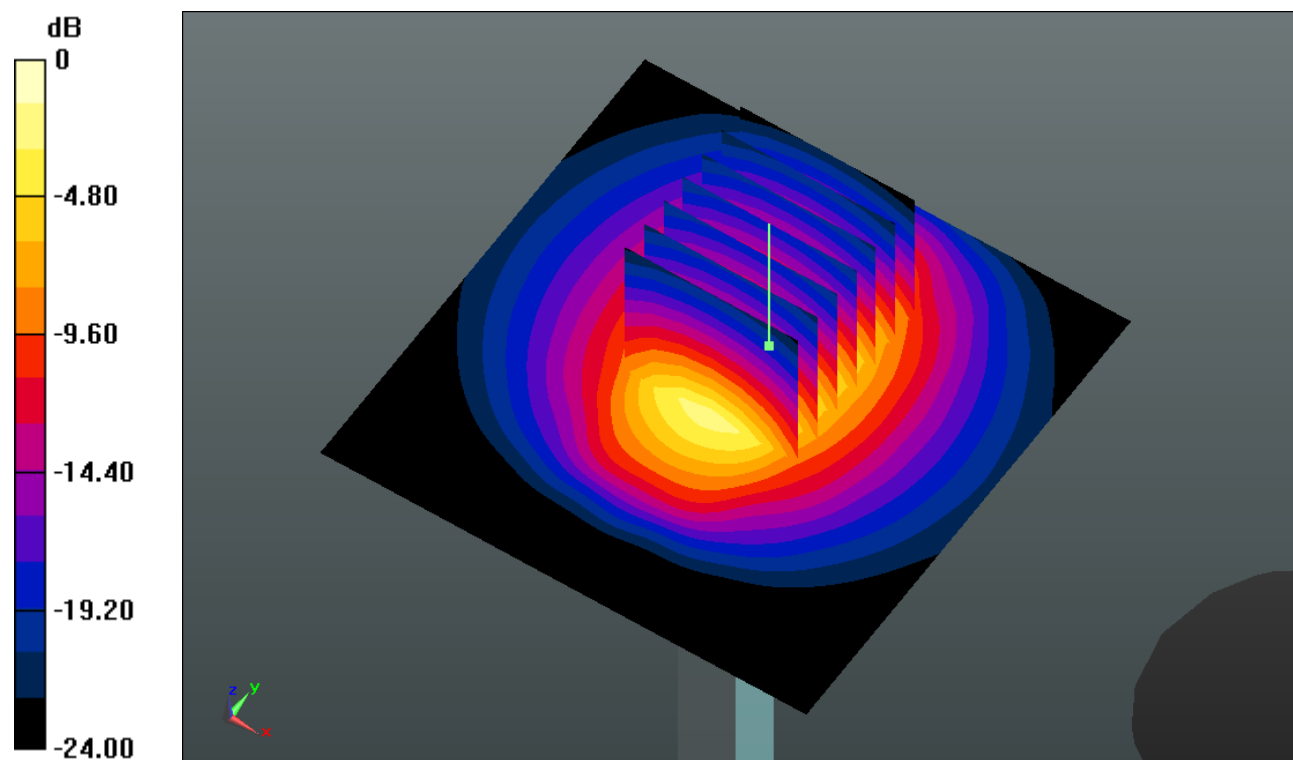
**Pin=250mW/Zoom Scan (7x7x7)/Cube 0:** Measurement grid: dx=5mm, dy=5mm, dz=5mm

Reference Value = 83.334 V/m; Power Drift = -0.08 dB

Peak SAR (extrapolated) = 28.330 W/kg

**SAR(1 g) = 12.9 mW/g; SAR(10 g) = 5.76 mW/g**

Maximum value of SAR (measured) = 20.148 mW/g



0 dB = 20.150mW/g



**System Check\_Head\_2450MHz\_150416**

**DUT: D2450V2 - SN:840**

Communication System: CW; Frequency: 2450 MHz; Duty Cycle: 1:1

Medium: HSL\_2450\_150416 Medium parameters used:  $f = 2450$  MHz;  $\sigma = 1.842$  mho/m;  $\epsilon_r =$

$39.923$ ;  $\rho = 1000$  kg/m<sup>3</sup>

Ambient Temperature : 23.7 °C ; Liquid Temperature : 22.6 °C

DASY5 Configuration:

- Probe: EX3DV4 - SN3857; ConvF(7.48, 7.48, 7.48); Calibrated: 2014.05.23
- Sensor-Surface: 2mm (Mechanical Surface Detection)
- Electronics: DAE4 Sn1210; Calibrated: 2014.05.19
- Phantom: SAM1; Type: SAM; Serial: TP-1479
- Measurement SW: DASY52, Version 52.8 (8); SEMCAD X Version 14.4.5 (3634)

**Pin=250mW/Area Scan (71x71x1):** Measurement grid: dx=12mm, dy=12mm

Maximum value of SAR (interpolated) = 19.183 mW/g

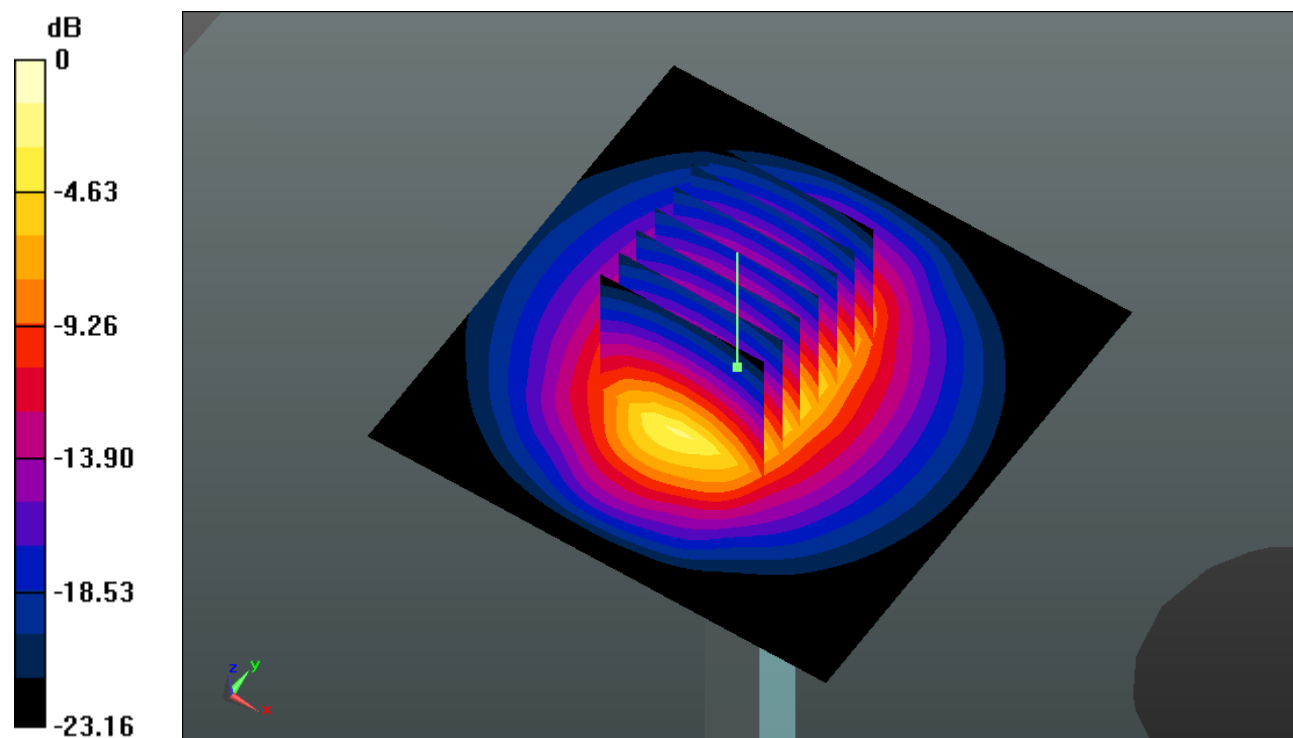
**Pin=250mW/Zoom Scan (7x7x7)/Cube 0:** Measurement grid: dx=5mm, dy=5mm, dz=5mm

Reference Value = 84.160 V/m; Power Drift = 0.19 dB

Peak SAR (extrapolated) = 26.115 W/kg

**SAR(1 g) = 12.1 mW/g; SAR(10 g) = 5.49 mW/g**

Maximum value of SAR (measured) = 18.933 mW/g



0 dB = 18.930mW/g

### System Check\_Head\_2600MHz\_150225

**DUT: D2600V2 - SN:1061**

Communication System: CW; Frequency: 2600 MHz; Duty Cycle: 1:1

Medium: HSL\_2600\_150225 Medium parameters used:  $f = 2600$  MHz;  $\sigma = 1.981$  mho/m;  $\epsilon_r =$

$38.254$ ;  $\rho = 1000$  kg/m<sup>3</sup>

Ambient Temperature : 23.7 °C ; Liquid Temperature : 22.9 °C

DASY5 Configuration:

- Probe: EX3DV4 - SN3857; ConvF(7.3, 7.3, 7.3); Calibrated: 2014.05.23

- Sensor-Surface: 2mm (Mechanical Surface Detection)

- Electronics: DAE4 Sn1210; Calibrated: 2014.05.19

- Phantom: SAM2; Type: SAM; Serial: TP-1477

- Measurement SW: DASY52, Version 52.8 (8); SEMCAD X Version 14.4.5 (3634)

**Pin=250mW/Area Scan (71x71x1):** Measurement grid: dx=12mm, dy=12mm

Maximum value of SAR (interpolated) = 22.128 mW/g

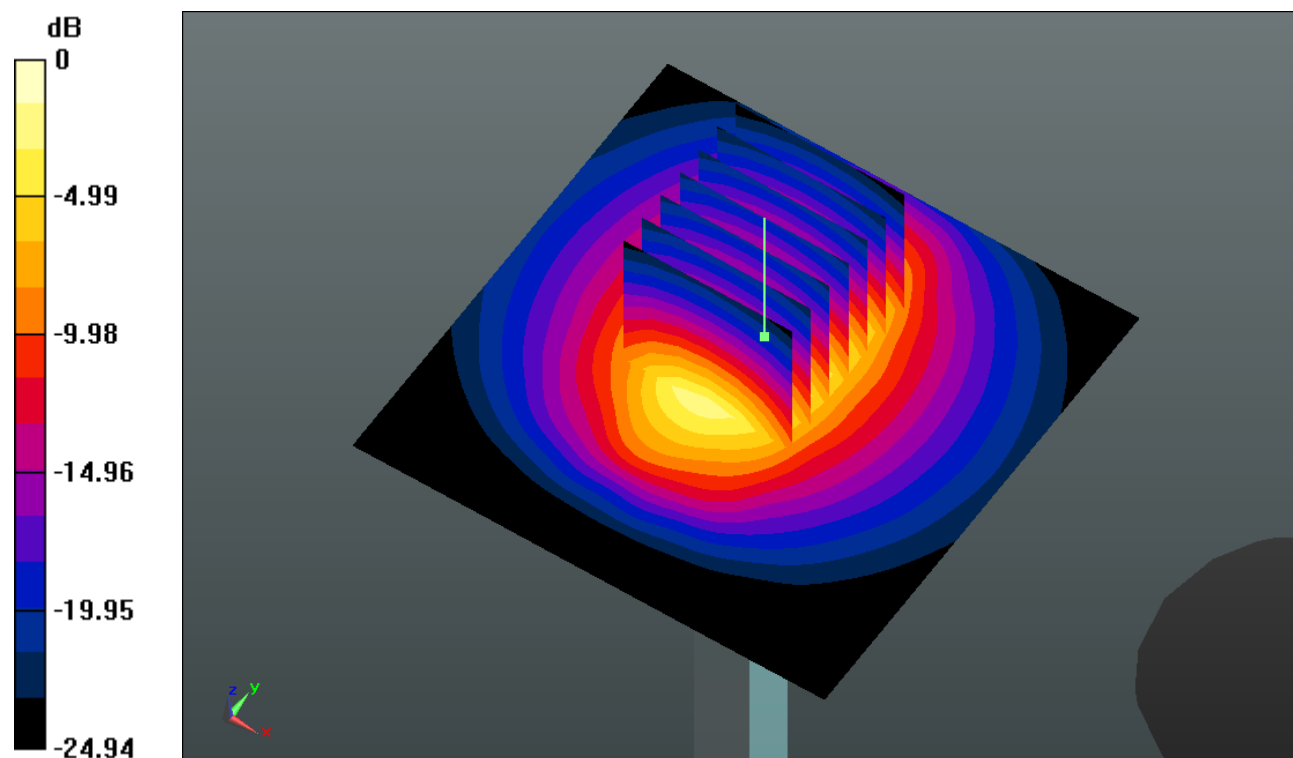
**Pin=250mW/Zoom Scan (7x7x7)/Cube 0:** Measurement grid: dx=5mm, dy=5mm, dz=5mm

Reference Value = 88.850 V/m; Power Drift = -0.07 dB

Peak SAR (extrapolated) = 31.417 W/kg

**SAR(1 g) = 14 mW/g; SAR(10 g) = 6.2 mW/g**

Maximum value of SAR (measured) = 22.369 mW/g



0 dB = 22.370mW/g

### System Check\_Head\_2600MHz\_150416

**DUT: D2600V2 - SN:1061**

Communication System: CW; Frequency: 2600 MHz; Duty Cycle: 1:1

Medium: HSL\_2600\_150416 Medium parameters used:  $f = 2600$  MHz;  $\sigma = 1.974$  mho/m;  $\epsilon_r =$

$38.204$ ;  $\rho = 1000$  kg/m<sup>3</sup>

Ambient Temperature : 23.8 °C ; Liquid Temperature : 22.9 °C

DASY5 Configuration:

- Probe: EX3DV4 - SN3857; ConvF(7.3, 7.3, 7.3); Calibrated: 2014.05.23

- Sensor-Surface: 2mm (Mechanical Surface Detection)

- Electronics: DAE4 Sn1210; Calibrated: 2014.05.19

- Phantom: SAM1; Type: SAM; Serial: TP-1479

- Measurement SW: DASY52, Version 52.8 (8); SEMCAD X Version 14.4.5 (3634)

**Pin=250mW/Area Scan (71x71x1):** Measurement grid: dx=12mm, dy=12mm

Maximum value of SAR (interpolated) = 22.767 mW/g

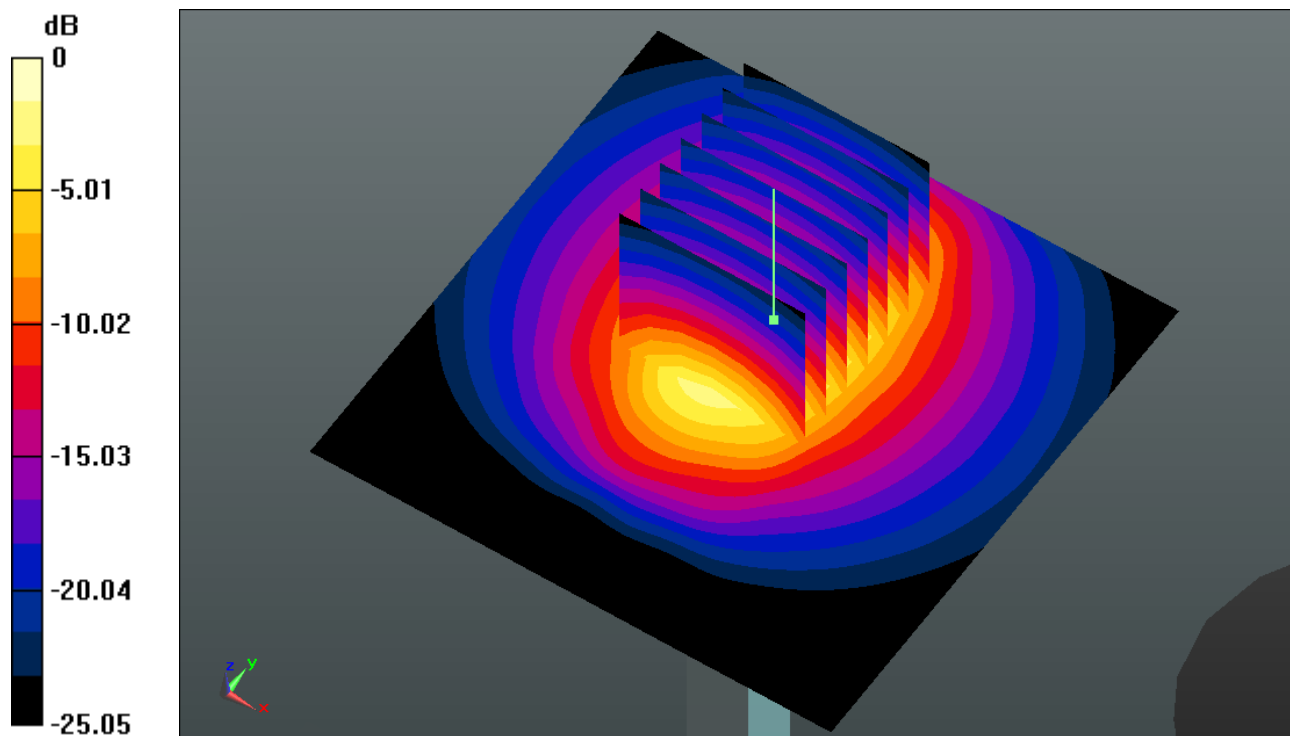
**Pin=250mW/Zoom Scan (7x7x7)/Cube 0:** Measurement grid: dx=5mm, dy=5mm, dz=5mm

Reference Value = 85.550 V/m; Power Drift = -0.09 dB

Peak SAR (extrapolated) = 31.846 W/kg

**SAR(1 g) = 14.2 mW/g; SAR(10 g) = 6.25 mW/g**

Maximum value of SAR (measured) = 22.650 mW/g



0 dB = 22.650mW/g

### System Check\_Body\_835MHz\_150304

**DUT: D835V2 - SN:4d091**

Communication System: CW; Frequency: 835 MHz; Duty Cycle: 1:1

Medium: MSL\_835\_150304 Medium parameters used:  $f = 835 \text{ MHz}$ ;  $\sigma = 0.982 \text{ mho/m}$ ;  $\epsilon_r = 54.848$ ;

$\rho = 1000 \text{ kg/m}^3$

Ambient Temperature :  $23.6 \text{ }^\circ\text{C}$  ; Liquid Temperature :  $22.8 \text{ }^\circ\text{C}$

DASY5 Configuration:

- Probe: EX3DV4 - SN3857; ConvF(9.31, 9.31, 9.31); Calibrated: 2014.05.23
- Sensor-Surface: 2mm (Mechanical Surface Detection)
- Electronics: DAE4 Sn1210; Calibrated: 2014.05.19
- Phantom: SAM2; Type: SAM; Serial: TP-1477
- Measurement SW: DASY52, Version 52.8 (8); SEMCAD X Version 14.4.5 (3634)

**Pin=250mW/Area Scan (61x61x1):** Measurement grid:  $dx=15\text{mm}$ ,  $dy=15\text{mm}$

Maximum value of SAR (interpolated) =  $2.873 \text{ mW/g}$

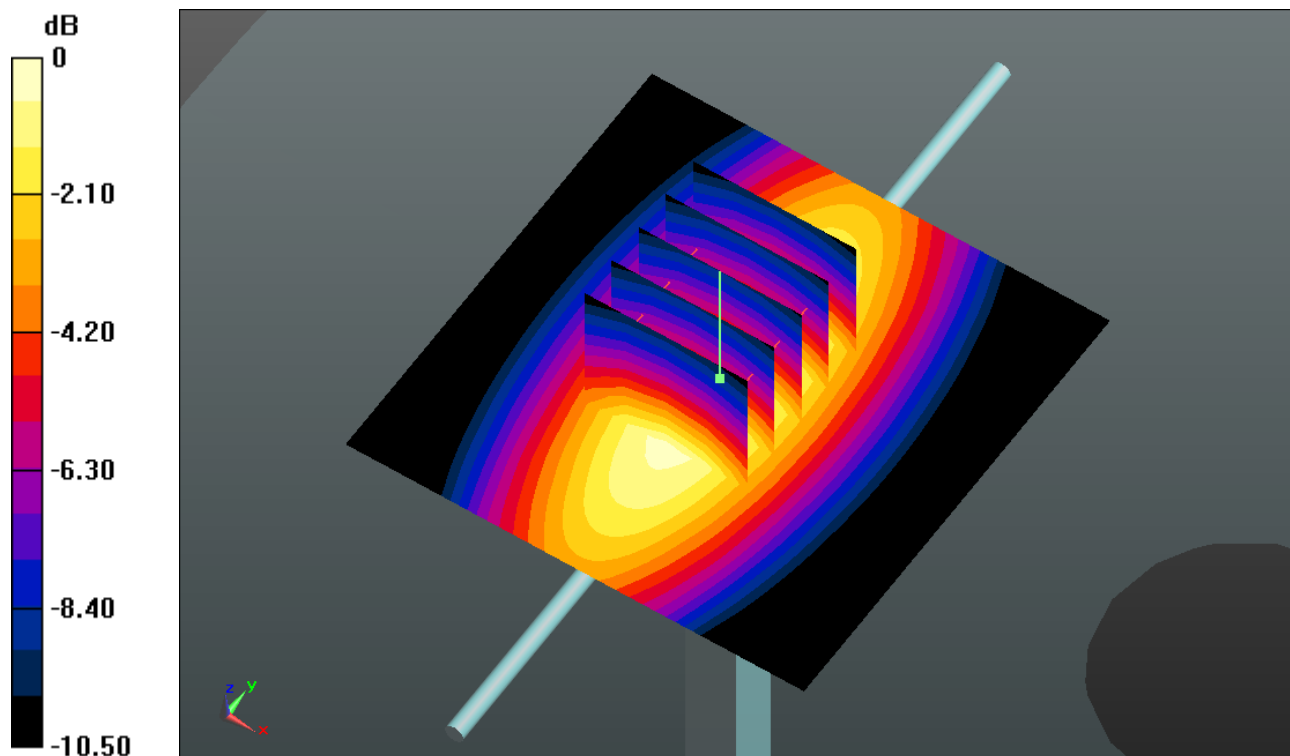
**Pin=250mW/Zoom Scan (5x5x7)/Cube 0:** Measurement grid:  $dx=8\text{mm}$ ,  $dy=8\text{mm}$ ,  $dz=5\text{mm}$

Reference Value =  $50.212 \text{ V/m}$ ; Power Drift =  $0.06 \text{ dB}$

Peak SAR (extrapolated) =  $3.402 \text{ W/kg}$

**SAR(1 g) =  $2.32 \text{ mW/g}$ ; SAR(10 g) =  $1.52 \text{ mW/g}$**

Maximum value of SAR (measured) =  $2.925 \text{ mW/g}$



0 dB =  $2.920\text{mW/g}$

### System Check\_Body\_835MHz\_150415

**DUT: D835V2 - SN:4d091**

Communication System: CW; Frequency: 835 MHz; Duty Cycle: 1:1

Medium: MSL\_835\_150415 Medium parameters used:  $f = 835 \text{ MHz}$ ;  $\sigma = 0.98 \text{ mho/m}$ ;  $\epsilon_r = 54.48$ ;  $\rho = 1000 \text{ kg/m}^3$

Ambient Temperature :  $23.6 \text{ }^\circ\text{C}$ ; Liquid Temperature :  $22.8 \text{ }^\circ\text{C}$

DASY5 Configuration:

- Probe: EX3DV4 - SN3857; ConvF(9.31, 9.31, 9.31); Calibrated: 2014.05.23
- Sensor-Surface: 2mm (Mechanical Surface Detection)
- Electronics: DAE4 Sn1210; Calibrated: 2014.05.19
- Phantom: SAM2; Type: SAM; Serial: TP-1477
- Measurement SW: DASY52, Version 52.8 (8); SEMCAD X Version 14.4.5 (3634)

**Pin=250mW/Area Scan (61x61x1):** Measurement grid:  $dx=15\text{mm}$ ,  $dy=15\text{mm}$

Maximum value of SAR (interpolated) =  $2.850 \text{ mW/g}$

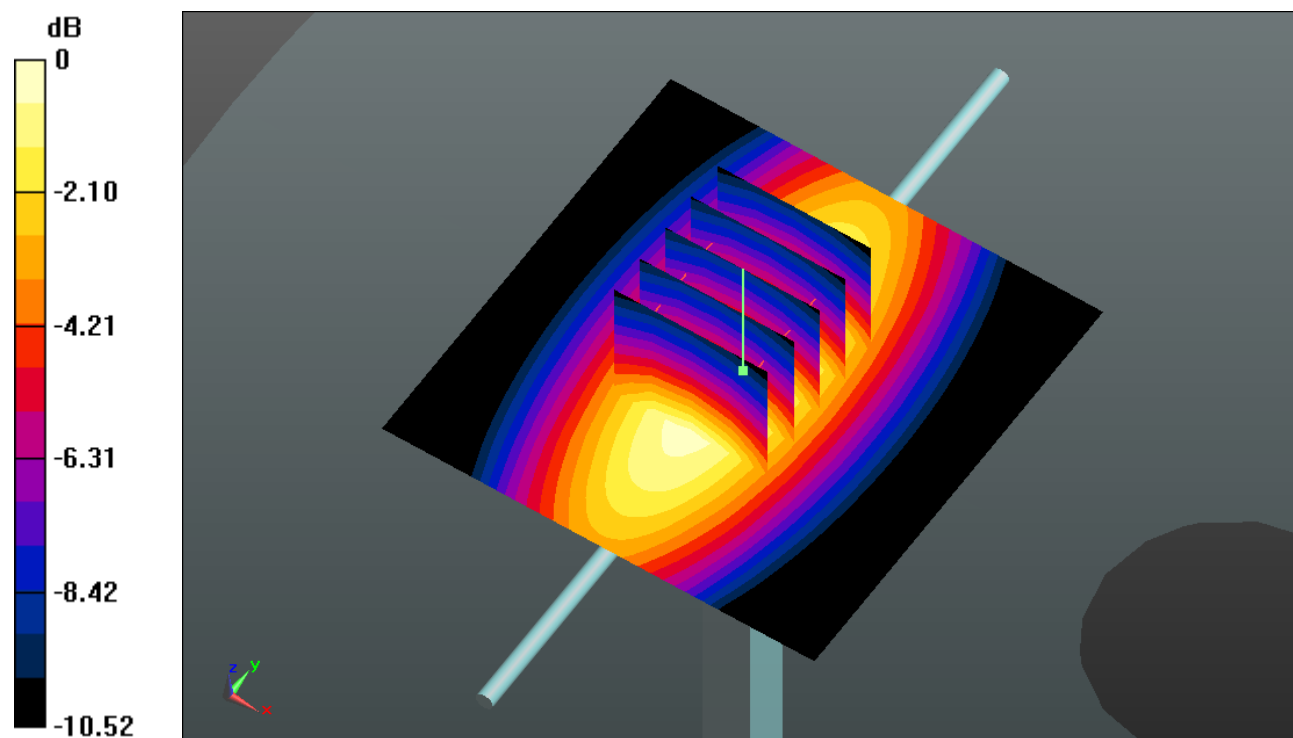
**Pin=250mW/Zoom Scan (5x5x7)/Cube 0:** Measurement grid:  $dx=8\text{mm}$ ,  $dy=8\text{mm}$ ,  $dz=5\text{mm}$

Reference Value =  $50.056 \text{ V/m}$ ; Power Drift =  $0.04 \text{ dB}$

Peak SAR (extrapolated) =  $3.322 \text{ W/kg}$

**SAR(1 g) =  $2.26 \text{ mW/g}$ ; SAR(10 g) =  $1.49 \text{ mW/g}$**

Maximum value of SAR (measured) =  $2.854 \text{ mW/g}$



0 dB =  $2.850\text{mW/g}$

### System Check\_Body\_1750MHz\_150228

**DUT: D1750V2 - SN:1069**

Communication System: CW; Frequency: 1750 MHz; Duty Cycle: 1:1

Medium: MSL\_1750\_150228 Medium parameters used:  $f = 1750$  MHz;  $\sigma = 1.512$  mho/m;  $\epsilon_r =$

$55.273$ ;  $\rho = 1000$  kg/m<sup>3</sup>

Ambient Temperature : 23.8 °C ; Liquid Temperature : 22.9 °C

DASY5 Configuration:

- Probe: EX3DV4 - SN3857; ConvF(7.89, 7.89, 7.89); Calibrated: 2014.05.23
- Sensor-Surface: 2mm (Mechanical Surface Detection)
- Electronics: DAE4 Sn1210; Calibrated: 2014.05.19
- Phantom: SAM1; Type: SAM; Serial: TP-1479
- Measurement SW: DASY52, Version 52.8 (8); SEMCAD X Version 14.4.5 (3634)

**Pin=250mW/Area Scan (61x61x1):** Measurement grid: dx=15mm, dy=15mm

Maximum value of SAR (interpolated) = 12.855 mW/g

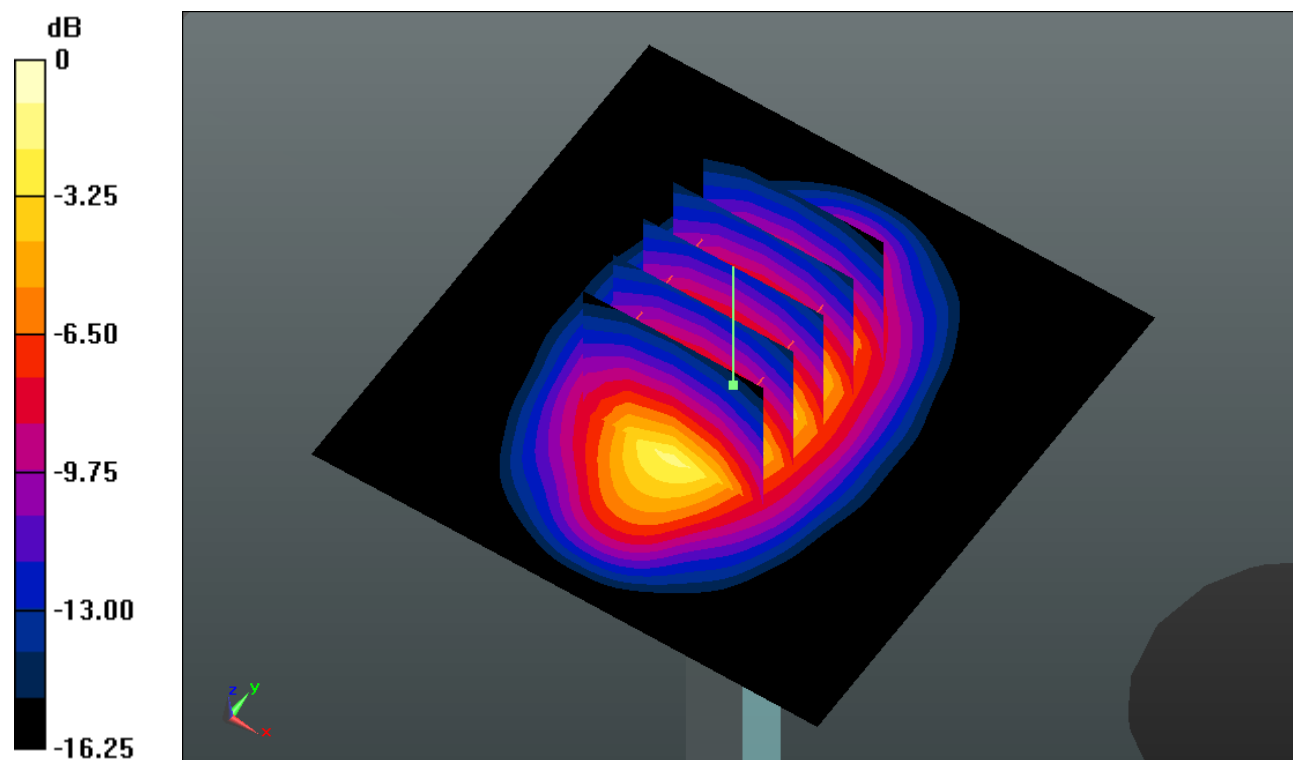
**Pin=250mW/Zoom Scan (5x5x7)/Cube 0:** Measurement grid: dx=8mm, dy=8mm, dz=5mm

Reference Value = 82.257 V/m; Power Drift = 0.0051 dB

Peak SAR (extrapolated) = 16.064 W/kg

**SAR(1 g) = 9.18 mW/g; SAR(10 g) = 4.92 mW/g**

Maximum value of SAR (measured) = 12.927 mW/g



0 dB = 12.930mW/g

### System Check\_Body\_1750MHz\_150416

**DUT: D1750V2 - SN:1069**

Communication System: CW; Frequency: 1750 MHz; Duty Cycle: 1:1

Medium: MSL\_1750\_150416 Medium parameters used:  $f = 1750$  MHz;  $\sigma = 1.519$  mho/m;  $\epsilon_r =$

$54.941$ ;  $\rho = 1000$  kg/m<sup>3</sup>

Ambient Temperature : 23.8 °C ; Liquid Temperature : 22.8 °C

DASY5 Configuration:

- Probe: EX3DV4 - SN3857; ConvF(7.89, 7.89, 7.89); Calibrated: 2014.05.23
- Sensor-Surface: 2mm (Mechanical Surface Detection)
- Electronics: DAE4 Sn1210; Calibrated: 2014.05.19
- Phantom: SAM2; Type: SAM; Serial: TP-1477
- Measurement SW: DASY52, Version 52.8 (8); SEMCAD X Version 14.4.5 (3634)

**Pin=250mW/Area Scan (61x61x1):** Measurement grid: dx=15mm, dy=15mm

Maximum value of SAR (interpolated) = 12.605 mW/g

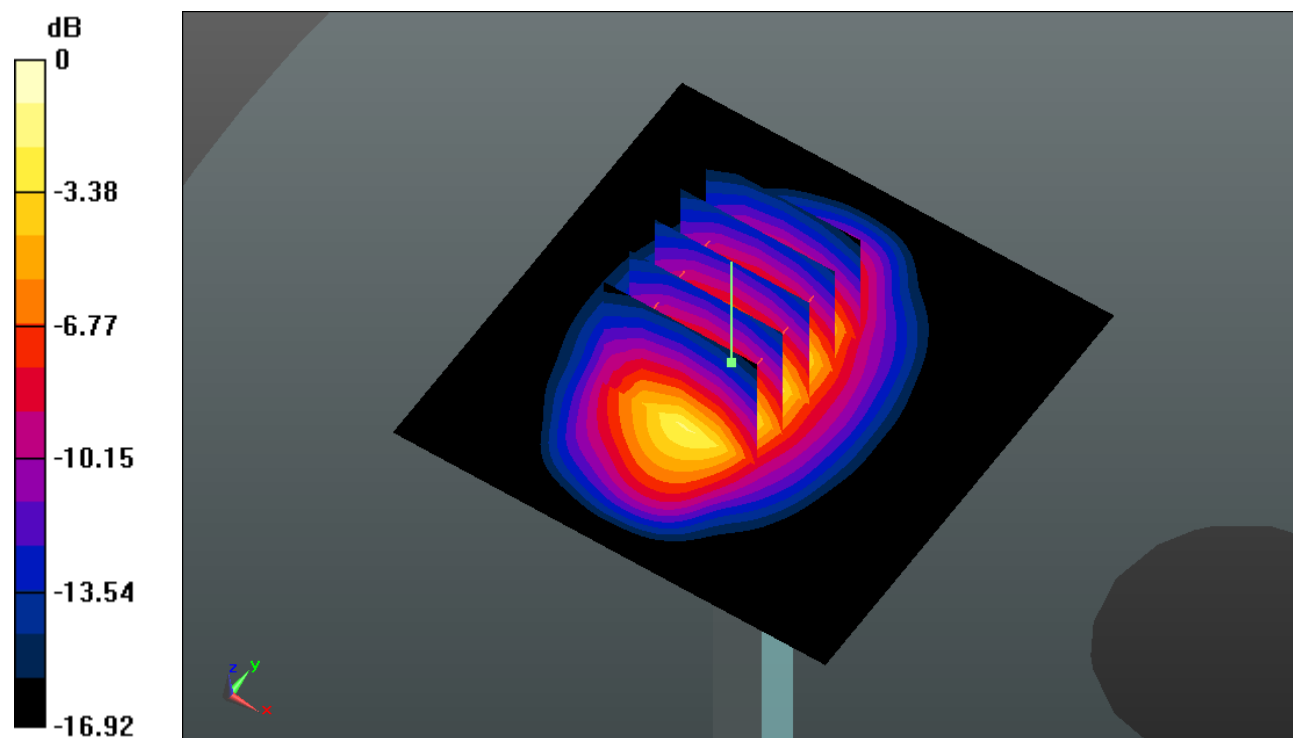
**Pin=250mW/Zoom Scan (5x5x7)/Cube 0:** Measurement grid: dx=8mm, dy=8mm, dz=5mm

Reference Value = 78.632 V/m; Power Drift = 0.16 dB

Peak SAR (extrapolated) = 16.180 W/kg

**SAR(1 g) = 9.14 mW/g; SAR(10 g) = 4.83 mW/g**

Maximum value of SAR (measured) = 12.938 mW/g



0 dB = 12.940mW/g

### System Check\_Body\_1900MHz\_150228

#### DUT: D1900V2 - SN:5d118

Communication System: CW; Frequency: 1900 MHz; Duty Cycle: 1:1

Medium: MSL\_1900\_150228 Medium parameters used:  $f = 1900$  MHz;  $\sigma = 1.552$  mho/m;  $\epsilon_r =$

$53.303$ ;  $\rho = 1000$  kg/m<sup>3</sup>

Ambient Temperature : 23.9 °C ; Liquid Temperature : 22.6 °C

#### DASY5 Configuration:

- Probe: EX3DV4 - SN3857; ConvF(7.56, 7.56, 7.56); Calibrated: 2014.05.23
- Sensor-Surface: 2mm (Mechanical Surface Detection)
- Electronics: DAE4 Sn1210; Calibrated: 2014.05.19
- Phantom: SAM1; Type: SAM; Serial: TP-1479
- Measurement SW: DASY52, Version 52.8 (8); SEMCAD X Version 14.4.5 (3634)

**Pin=250mW/Area Scan (61x61x1):** Measurement grid: dx=15mm, dy=15mm

Maximum value of SAR (interpolated) = 14.781 mW/g

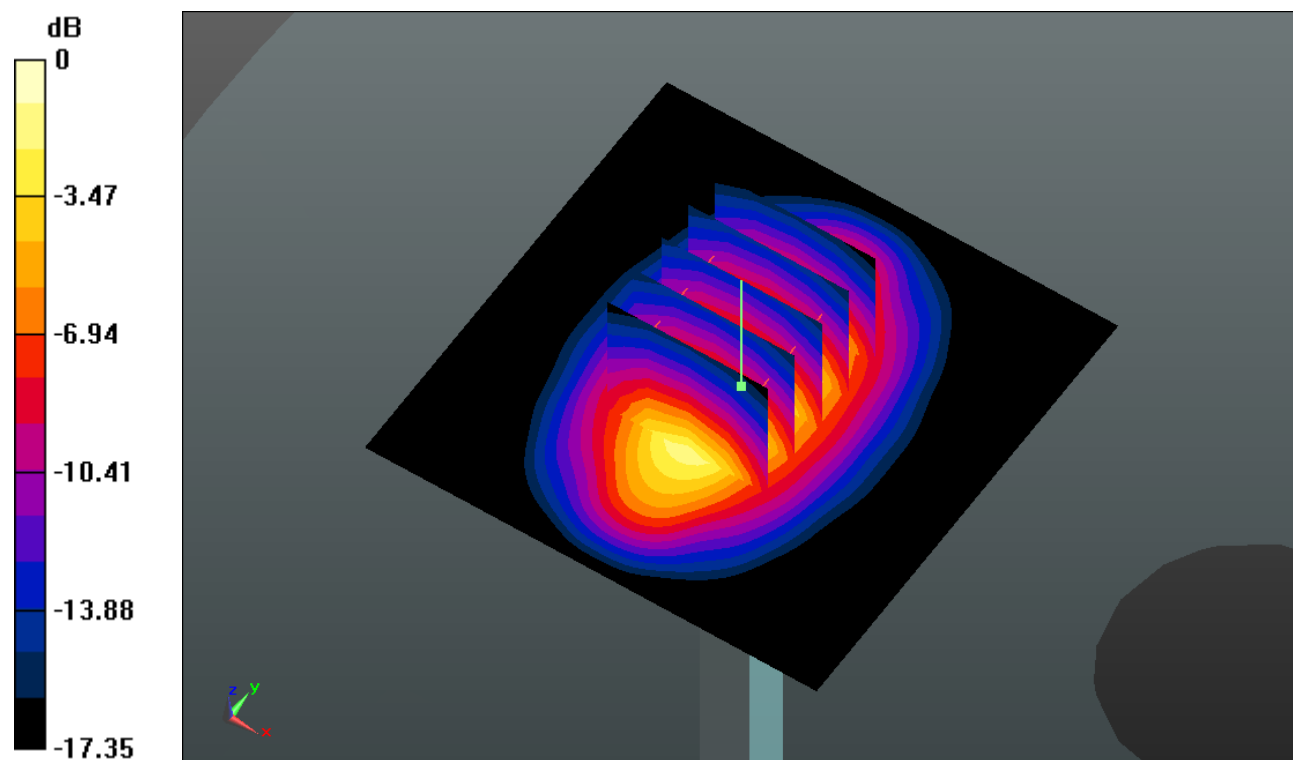
**Pin=250mW/Zoom Scan (5x5x7)/Cube 0:** Measurement grid: dx=8mm, dy=8mm, dz=5mm

Reference Value = 87.098 V/m; Power Drift = 0.01 dB

Peak SAR (extrapolated) = 18.538 W/kg

**SAR(1 g) = 10.4 mW/g; SAR(10 g) = 5.41 mW/g**

Maximum value of SAR (measured) = 14.785 mW/g



0 dB = 14.780mW/g



### System Check\_Body\_1900MHz\_150416

#### DUT: D1900V2 - SN:5d118

Communication System: CW; Frequency: 1900 MHz; Duty Cycle: 1:1

Medium: MSL\_1900\_150416 Medium parameters used:  $f = 1900$  MHz;  $\sigma = 1.555$  mho/m;  $\epsilon_r =$

$53.699$ ;  $\rho = 1000$  kg/m<sup>3</sup>

Ambient Temperature : 23.9 °C ; Liquid Temperature : 22.6 °C

#### DASY5 Configuration:

- Probe: EX3DV4 - SN3857; ConvF(7.56, 7.56, 7.56); Calibrated: 2014.05.23
- Sensor-Surface: 2mm (Mechanical Surface Detection)
- Electronics: DAE4 Sn1210; Calibrated: 2014.05.19
- Phantom: SAM2; Type: SAM; Serial: TP-1477
- Measurement SW: DASY52, Version 52.8 (8); SEMCAD X Version 14.4.5 (3634)

**Pin=250mW/Area Scan (61x61x1):** Measurement grid: dx=15mm, dy=15mm

Maximum value of SAR (interpolated) = 14.562 mW/g

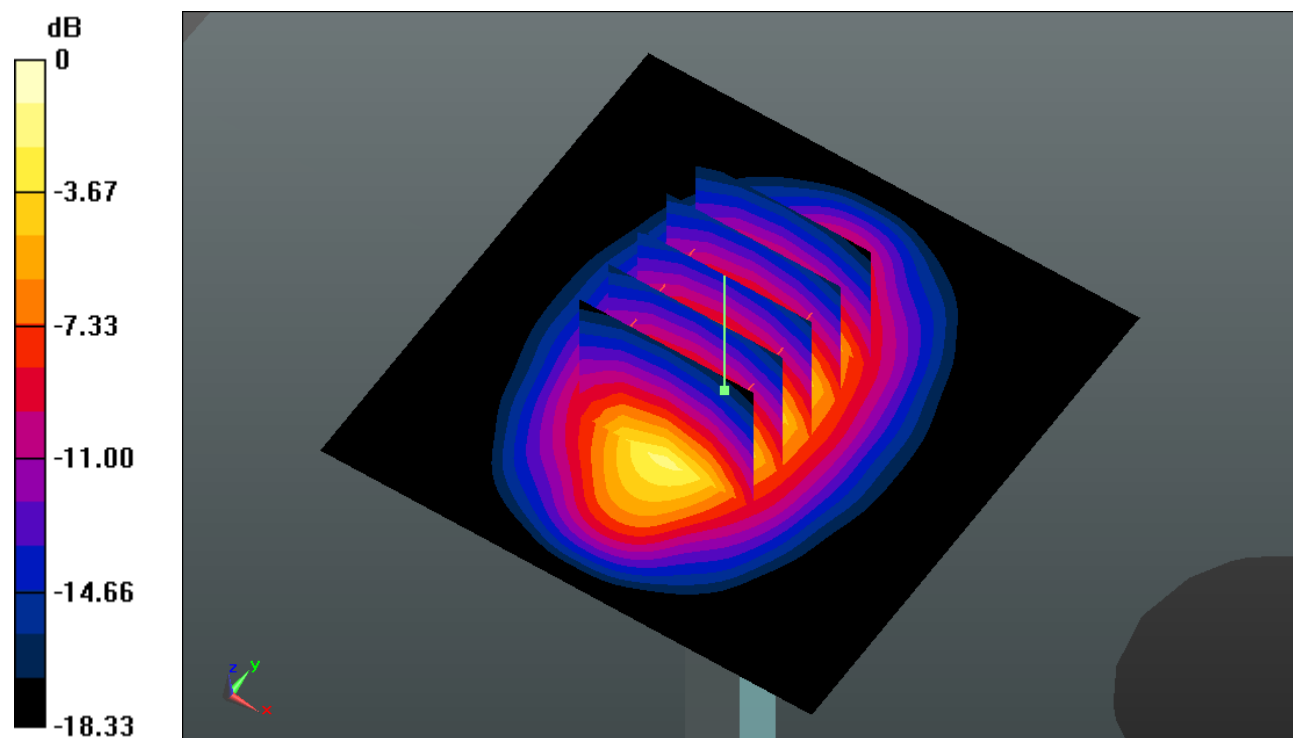
**Pin=250mW/Zoom Scan (5x5x7)/Cube 0:** Measurement grid: dx=8mm, dy=8mm, dz=5mm

Reference Value = 86.744 V/m; Power Drift = 0.07 dB

Peak SAR (extrapolated) = 18.910 W/kg

**SAR(1 g) = 10.4 mW/g; SAR(10 g) = 5.33 mW/g**

Maximum value of SAR (measured) = 14.990 mW/g



0 dB = 14.990mW/g

**System Check\_Body\_2450MHz\_150301**

**DUT: D2450V2 - SN:840**

Communication System: CW; Frequency: 2450 MHz; Duty Cycle: 1:1

Medium: MSL\_2450\_150301 Medium parameters used:  $f = 2450$  MHz;  $\sigma = 1.933$  mho/m;  $\epsilon_r =$

$51.282$ ;  $\rho = 1000$  kg/m<sup>3</sup>

Ambient Temperature : 23.7 °C ; Liquid Temperature : 22.9 °C

**DASY5 Configuration:**

- Probe: EX3DV4 - SN3857; ConvF(7.14, 7.14, 7.14); Calibrated: 2014.05.23
- Sensor-Surface: 2mm (Mechanical Surface Detection)
- Electronics: DAE4 Sn1210; Calibrated: 2014.05.19
- Phantom: SAM1; Type: SAM; Serial: TP-1479
- Measurement SW: DASY52, Version 52.8 (8); SEMCAD X Version 14.4.5 (3634)

**Pin=250mW/Area Scan (81x81x1):** Measurement grid: dx=12mm, dy=12mm

Maximum value of SAR (interpolated) = 19.177 mW/g

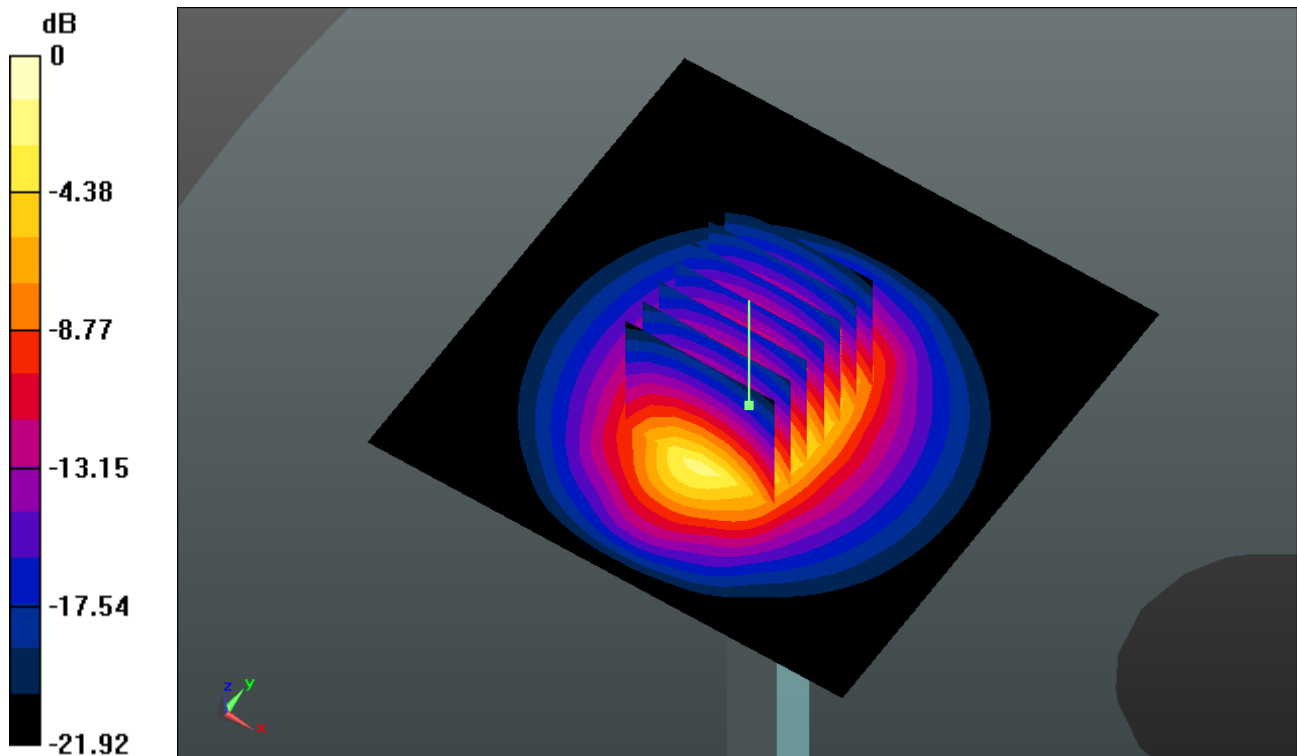
**Pin=250mW/Zoom Scan (7x7x7)/Cube 0:** Measurement grid: dx=5mm, dy=5mm, dz=5mm

Reference Value = 84.028 V/m; Power Drift = 0.03 dB

Peak SAR (extrapolated) = 25.744 W/kg

**SAR(1 g) = 12.5 mW/g; SAR(10 g) = 5.79 mW/g**

Maximum value of SAR (measured) = 18.873 mW/g



0 dB = 18.870mW/g

**System Check\_Body\_2450MHz\_150416**

**DUT: D2450V2 - SN:840**

Communication System: CW; Frequency: 2450 MHz; Duty Cycle: 1:1

Medium: MSL\_2450\_150416 Medium parameters used:  $f = 2450$  MHz;  $\sigma = 1.943$  mho/m;  $\epsilon_r =$

50.96;  $\rho = 1000$  kg/m<sup>3</sup>

Ambient Temperature : 23.6 °C ; Liquid Temperature : 22.7 °C

DASY5 Configuration:

- Probe: EX3DV4 - SN3857; ConvF(7.14, 7.14, 7.14); Calibrated: 2014.05.23
- Sensor-Surface: 2mm (Mechanical Surface Detection)
- Electronics: DAE4 Sn1210; Calibrated: 2014.05.19
- Phantom: SAM2; Type: SAM; Serial: TP-1477
- Measurement SW: DASY52, Version 52.8 (8); SEMCAD X Version 14.4.5 (3634)

**Pin=250mW/Area Scan (81x81x1):** Measurement grid: dx=12mm, dy=12mm

Maximum value of SAR (interpolated) = 19.206 mW/g

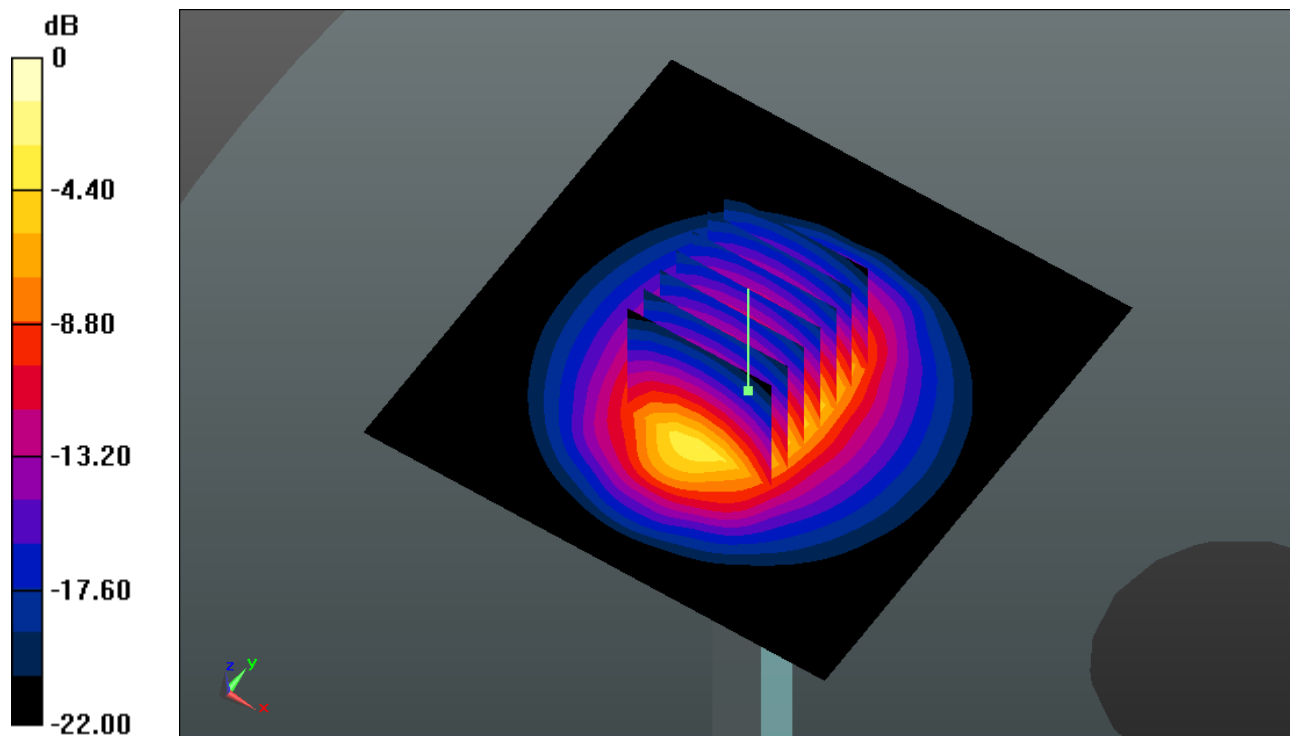
**Pin=250mW/Zoom Scan (7x7x7)/Cube 0:** Measurement grid: dx=5mm, dy=5mm, dz=5mm

Reference Value = 85.837 V/m; Power Drift = 0.0043 dB

Peak SAR (extrapolated) = 26.136 W/kg

**SAR(1 g) = 12.5 mW/g; SAR(10 g) = 5.74 mW/g**

Maximum value of SAR (measured) = 19.267 mW/g



0 dB = 19.270mW/g

### System Check\_Body\_2600MHz\_150301

**DUT: D2600V2 - SN:1061**

Communication System: CW (0); Frequency: 2600 MHz; Duty Cycle: 1:1

Medium: MSL\_2600\_150301 Medium parameters used:  $f = 2600$  MHz;  $\sigma = 2.201$  mho/m;  $\epsilon_r =$

$52.823$ ;  $\rho = 1000$  kg/m<sup>3</sup>

Ambient Temperature : 23.6 °C ; Liquid Temperature : 22.8 °C

DASY5 Configuration:

- Probe: EX3DV4 - SN3857; ConvF(6.82, 6.82, 6.82); Calibrated: 2014.05.23
- Sensor-Surface: 2mm (Mechanical Surface Detection)
- Electronics: DAE4 Sn1210; Calibrated: 2014.05.19
- Phantom: SAM1; Type: SAM; Serial: TP-1479
- Measurement SW: DASY52, Version 52.8 (8); SEMCAD X Version 14.4.5 (3634)

**Pin=250mW/Area Scan (81x81x1):** Measurement grid: dx=12mm, dy=12mm

Maximum value of SAR (interpolated) = 21.185 mW/g

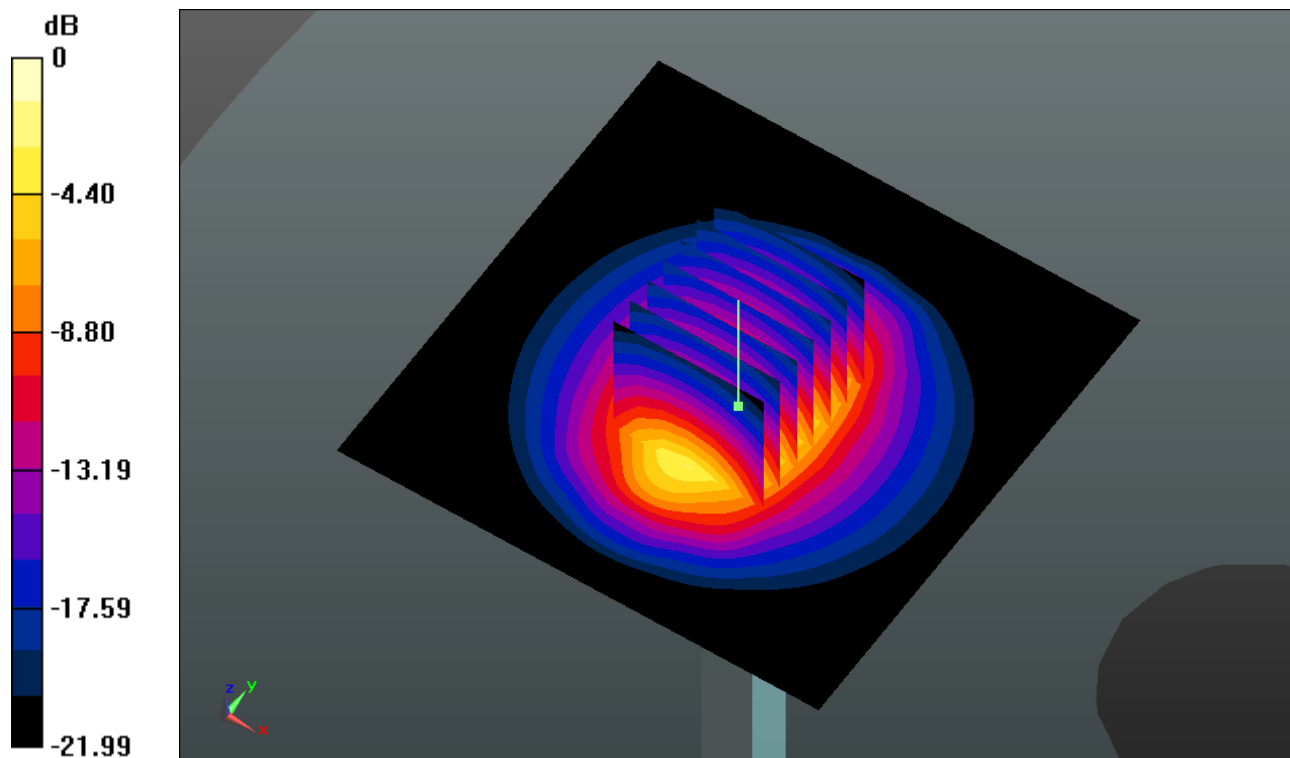
**Pin=250mW/Zoom Scan (7x7x7)/Cube 0:** Measurement grid: dx=5mm, dy=5mm, dz=5mm

Reference Value = 84.755 V/m; Power Drift = -0.002 dB

Peak SAR (extrapolated) = 28.629 W/kg

**SAR(1 g) = 13.7 mW/g; SAR(10 g) = 6.32 mW/g**

Maximum value of SAR (measured) = 21.173 mW/g



0 dB = 21.170mW/g

### System Check\_Body\_2600MHz\_150326

**DUT: D2600V2 - SN:1061**

Communication System: CW (0); Frequency: 2600 MHz; Duty Cycle: 1:1

Medium: MSL\_2600\_150326 Medium parameters used:  $f = 2600$  MHz;  $\sigma = 2.209$  mho/m;  $\epsilon_r =$

$51.123$ ;  $\rho = 1000$  kg/m<sup>3</sup>

Ambient Temperature : 23.6 °C ; Liquid Temperature : 22.9 °C

DASY5 Configuration:

- Probe: EX3DV4 - SN3857; ConvF(6.82, 6.82, 6.82); Calibrated: 2014.05.23
- Sensor-Surface: 2mm (Mechanical Surface Detection)
- Electronics: DAE4 Sn1210; Calibrated: 2014.05.19
- Phantom: SAM1; Type: SAM; Serial: TP-1479
- Measurement SW: DASY52, Version 52.8 (8); SEMCAD X Version 14.4.5 (3634)

**Pin=250mW/Area Scan (81x81x1):** Measurement grid: dx=12mm, dy=12mm

Maximum value of SAR (interpolated) = 21.486 mW/g

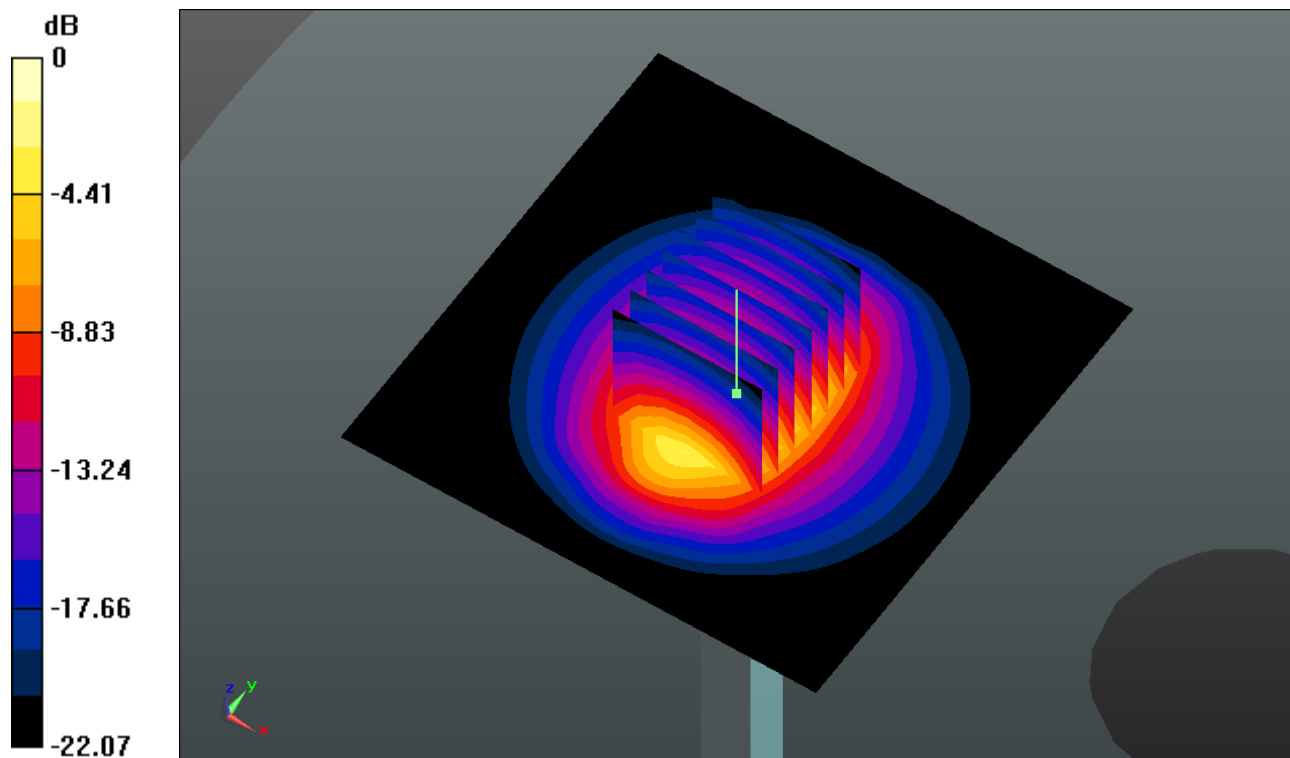
**Pin=250mW/Zoom Scan (7x7x7)/Cube 0:** Measurement grid: dx=5mm, dy=5mm, dz=5mm

Reference Value = 85.392 V/m; Power Drift = 0.006 dB

Peak SAR (extrapolated) = 29.185 W/kg

**SAR(1 g) = 14 mW/g; SAR(10 g) = 6.43 mW/g**

Maximum value of SAR (measured) = 21.549 mW/g



0 dB = 21.550mW/g

**System Check\_Body\_2600MHz\_150416**

**DUT: D2450V2 - SN:1061**

Communication System: CW; Frequency: 2600 MHz; Duty Cycle: 1:1

Medium: MSL\_2600\_150416 Medium parameters used:  $f = 2600$  MHz;  $\sigma = 2.165$  mho/m;  $\epsilon_r =$

$53.823$ ;  $\rho = 1000$  kg/m<sup>3</sup>

Ambient Temperature : 23.7 °C ; Liquid Temperature : 22.8 °C

DASY5 Configuration:

- Probe: EX3DV4 - SN3857; ConvF(6.82, 6.82, 6.82); Calibrated: 2014.05.23
- Sensor-Surface: 2mm (Mechanical Surface Detection)
- Electronics: DAE4 Sn1210; Calibrated: 2014.05.19
- Phantom: SAM1; Type: SAM; Serial: TP-1479
- Measurement SW: DASY52, Version 52.8 (8); SEMCAD X Version 14.4.5 (3634)

**Pin=250mW/Area Scan (81x81x1):** Measurement grid: dx=12mm, dy=12mm

Maximum value of SAR (interpolated) = 20.370 mW/g

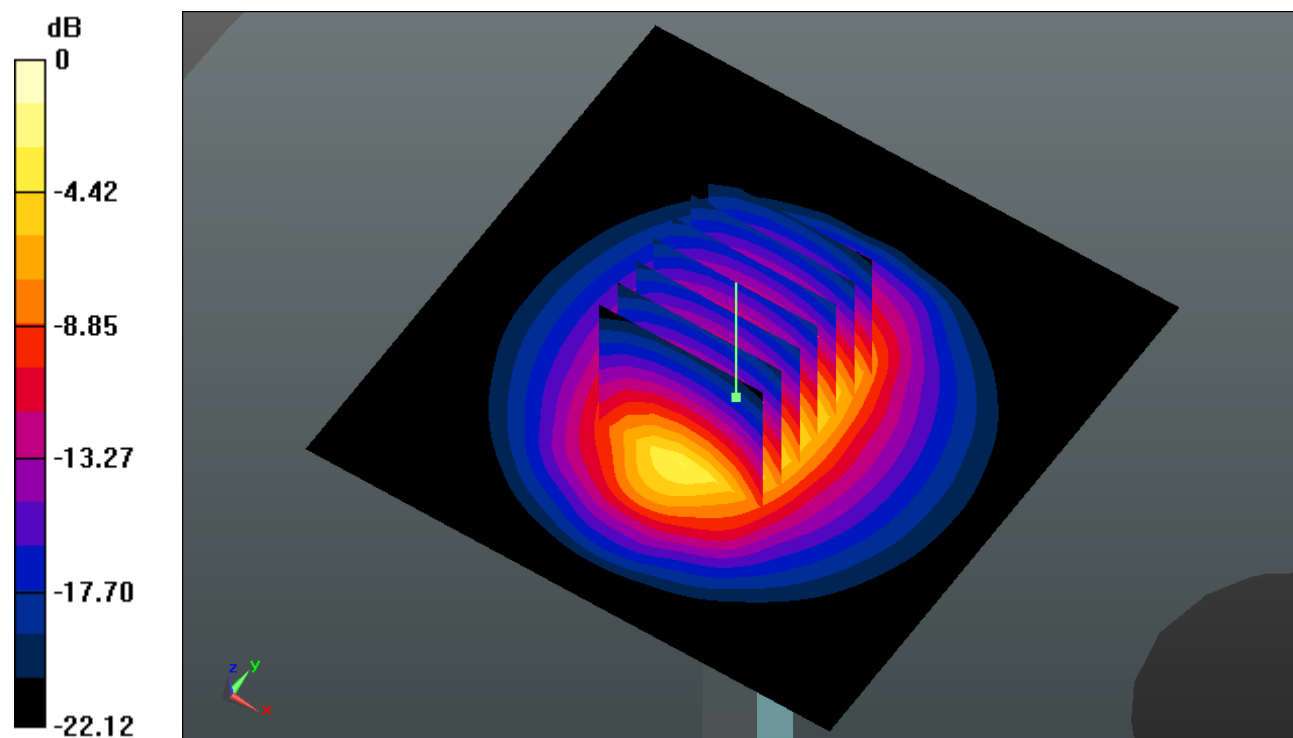
**Pin=250mW/Zoom Scan (7x7x7)/Cube 0:** Measurement grid: dx=5mm, dy=5mm, dz=5mm

Reference Value = 83.723 V/m; Power Drift = -0.04 dB

Peak SAR (extrapolated) = 27.658 W/kg

**SAR(1 g) = 13.2 mW/g; SAR(10 g) = 6.09 mW/g**

Maximum value of SAR (measured) = 20.272 mW/g



0 dB = 20.270mW/g